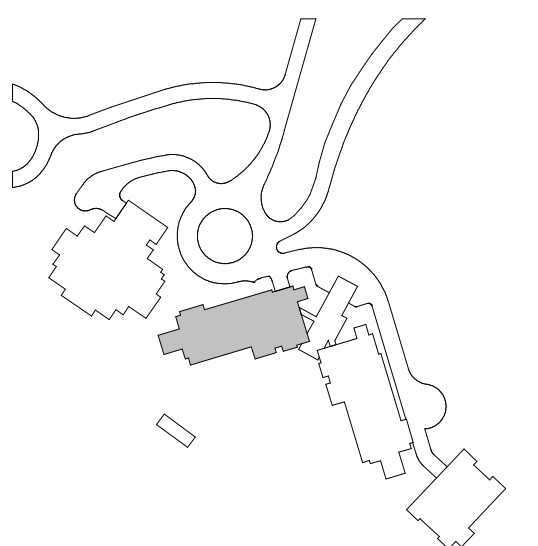


1. SCOPE OF WORK INCLUDES SPRINKLER PROTECTION THROUGHOUT ALL AREAS IN ACCORDANCE WITH NFPA 13. SPRINKLERS ARE INDICATED IN AREAS WITH FINISHED CEILINGS FOR COORDINATION PURPOSES. INSTALLING CONTRACTOR SHALL BE RESPONSIBLE FOR DETAILED DESIGN OF BRANCH PIPING AND UPRIGHT SPRINKLERS IN AREAS WITHOUT FINISHED CEILINGS.
2. REFER TO TYPICAL UNIT PLANS FOR SPRINKLER LAYOUTS ON RESIDENTIAL FLOORS.

- 1 1.5" CONNECTION FOR KITCHEN PCU. PROVIDE ACCESS PANEL FOR ISOLATION VALVE.
- 2 DISCHARGE SPRINKLER DRAIN RISER TO OPEN END DRAIN.

Seattle, Washington 98104 USA  
+1 206 624 5670 olsonkundig.com

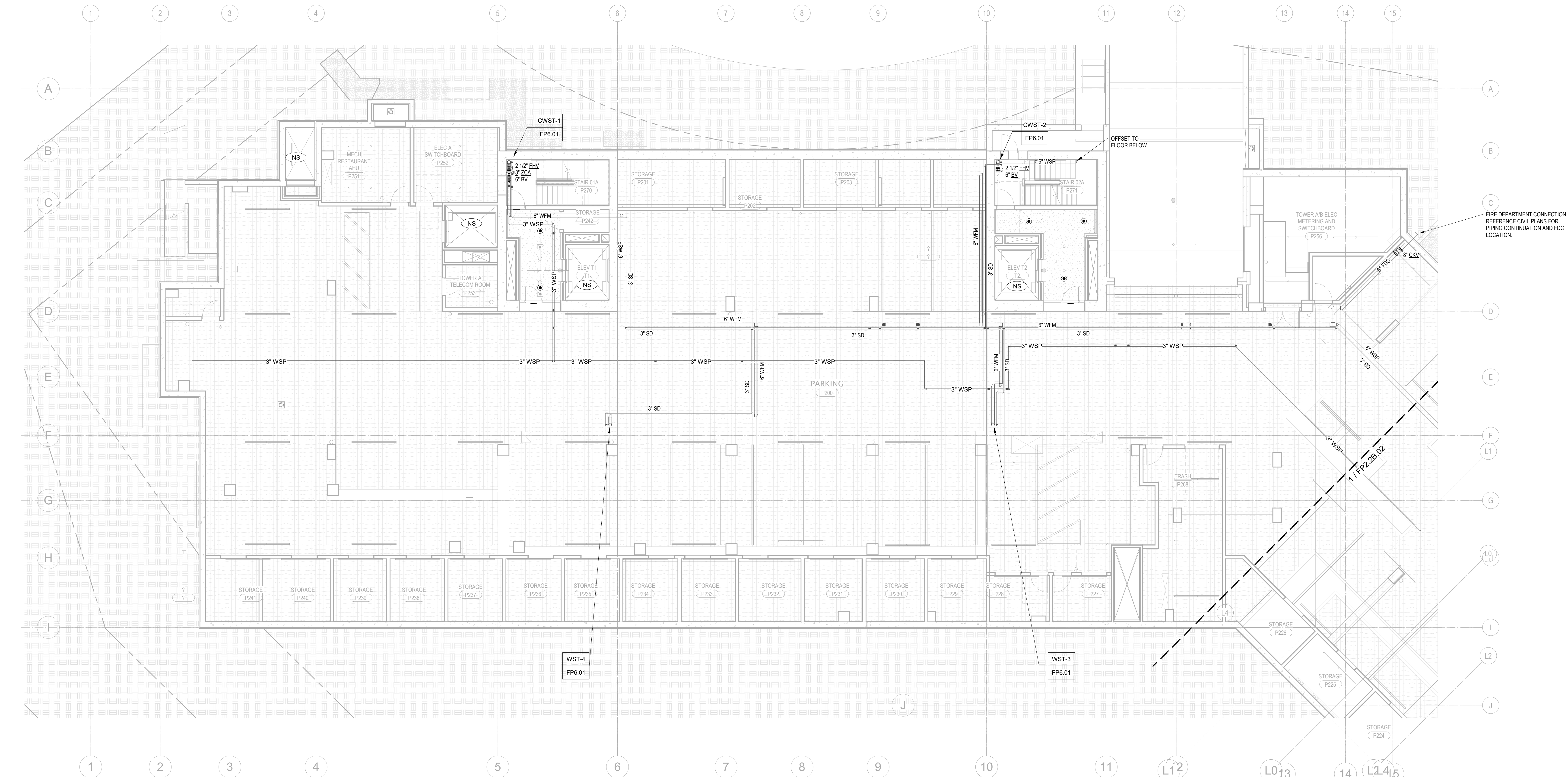
**SOMMET BLANC - AB**  
DEER VALLEY, UTAH



FP2.2A.01

GENERAL NOTES:

- SCOPE OF WORK INCLUDES SPRINKLER PROTECTION THROUGHOUT ALL AREAS IN ACCORDANCE WITH NFPA 13. SPRINKLERS ARE INDICATED IN AREAS WITH FINISHED CEILINGS FOR COORDINATION PURPOSES. INSTALLING CONTRACTOR SHALL BE RESPONSIBLE FOR DETAILED DESIGN OF BRANCH PIPING AND UPRIGHT SPRINKLERS IN AREAS WITHOUT FINISHED CEILINGS.
- REFER TO TYPICAL UNIT PLANS FOR SPRINKLER LAYOUTS ON RESIDENTIAL FLOORS.



1 TOWER A - LEVEL P2 - FP  
1/8" = 1'-0"

Reserved for permit stamp

109 South Jackson St., Suite 600  
Seattle, Washington 98104 USA  
+1 206 834 3877 olsonkundig.com

Olson Kundig

project  
SOMMET BLANC - AB  
DEER VALLEY, UTAH

White Summit Development, LLC  
PO Box 980022  
Park City, Utah 84098

Acoustic Consultant  
BRC Acoustics  
1932 1st Ave., Suite 620  
Seattle, WA 98101

Pool Consultant  
Cloward H2O  
2696 N University Ave., Suite 290  
Provo, UT 84604

Landscape Architect  
EPG Design  
6948 South High Tech Drive, Suite 100  
Midvale, Utah 84047

Specifications Writer  
Friday Group  
86 Mainell Road  
Middlebury, VT

Code Consultant  
Holmes  
600 1st Avenue, Suite 200A  
Seattle, WA 98104

Fire Protection Engineer  
Jensen Hughes  
One Research Drive, Suite 305C  
Westborough, MA 01581

Vertical Transportation Consultant  
Larch Bates  
19515 North Creek Parkway, Suite 304  
Bothell, WA 98011

Structural Engineer  
Magnusson Klemencic Associates  
1301 5th Ave., Suite 3200  
Seattle, WA 98101

Lighting Designer  
O  
1319 SE MLK Blvd, Suite 210  
Portland, Oregon 97219

Building Envelope Consultant  
RDH  
2101 N 34th St  
Seattle, WA 98103

Accessibility Consultant  
Studio Pacifica  
2144 Westlake Ave N, Suite F  
Seattle, WA 98109

MEP Engineer  
WSP USA  
1001 Fourth Ave., Suite 3100  
Seattle, WA 98154

principal architect\_\_\_\_\_  
project manager\_\_\_\_JCC\_\_\_\_\_  
drawn by\_\_\_\_CRB\_SMK\_\_\_\_\_  
checked by\_\_\_\_Checker\_\_\_\_\_  
job no. 20562  
date 11/18/2022

revisions:

no.\_\_\_\_date\_\_\_\_by\_\_\_\_

ISSUE FOR  
CONSTRUCTION  
11/18/2022

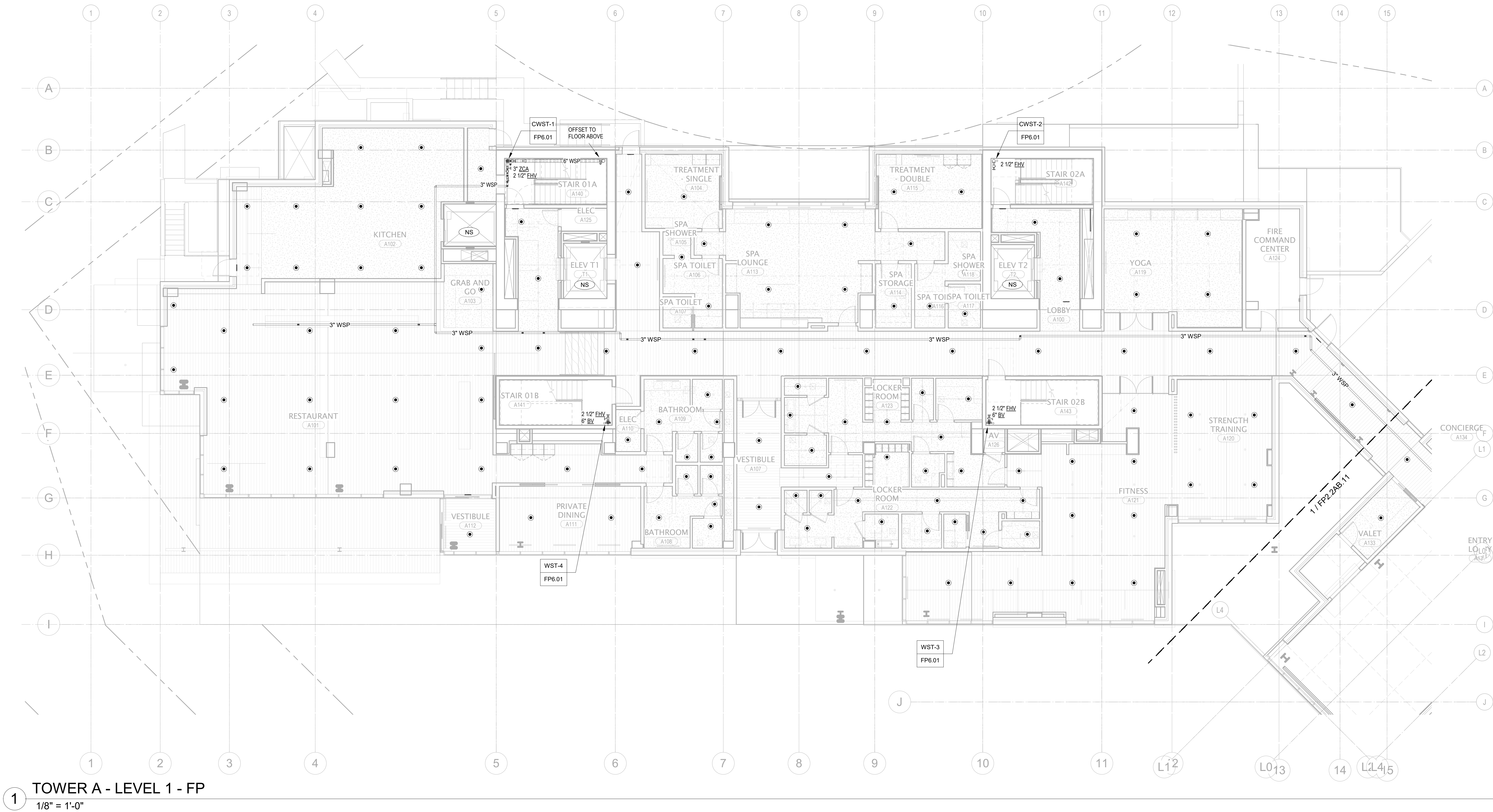
FIRE PROTECTION PLAN  
- TOWER A - LVL P2

FP2.2A.02



GENERAL NOTES:

- SCOPE OF WORK INCLUDES SPRINKLER PROTECTION THROUGHOUT ALL AREAS IN ACCORDANCE WITH NFPA 13. SPRINKLERS ARE INDICATED IN AREAS WITH FINISHED CEILINGS FOR COORDINATION PURPOSES. INSTALLING CONTRACTOR SHALL BE RESPONSIBLE FOR DETAILED DESIGN OF BRANCH PIPING AND UPRIGHT SPRINKLERS IN AREAS WITHOUT FINISHED CEILINGS.
- REFER TO TYPICAL UNIT PLANS FOR SPRINKLER LAYOUTS ON RESIDENTIAL FLOORS.



1 TOWER A - LEVEL 1 - FP  
1/8" = 1'-0"

Reserved for permit stamp

100 South Jackson St., Suite 600  
Seattle, Washington 98104 USA  
+1 206 834 3877 olsonkundig.com

Olson Kundig

project  
SOMMET BLANC - AB  
DEER VALLEY, UTAH

White Summit Development, LLC  
PO Box 980022  
Park City, Utah 84098

Acoustic Consultant

BRC Acoustics

1932 1st Ave., Suite 620  
Seattle, WA 98101

Pool Consultant

Cloward & Co.

2698 N University Ave., Suite 290  
Provo, UT 84604

Landscape Architect

EPG Design

6948 South High Tech Drive, Suite 100  
Midvale, Utah 84047

Specifications Writer

Friday Group

86 Mainelli Road  
Middlebury, VT

Code Consultant

Holmes

600 1st Avenue, Suite 200A  
Seattle, WA 98104

Fire Protection Engineer

Jensen Hughes

One Research Drive, Suite 305C  
Westborough, MA 01581

Vertical Transportation Consultant

Larch Bates

19515 North Creek Parkway, Suite 304  
Bothell, WA 98011

Structural Engineer

Magnusson Klemencic Associates

1301 5th Ave., Suite 3200  
Seattle, WA 98101

Lighting Designer

O.

1319 SE MLK Blvd., Suite 210  
Portland, Oregon 97219

Building Envelope Consultant

RDH

2101 N 34th St  
Seattle, WA 98103

Accessibility Consultant

Studio Pacifica

2144 Westlake Ave N, Suite F  
Seattle, WA 98109

MEP Engineer

WSP USA

1001 Fourth Ave., Suite 3100  
Seattle, WA 98154

principal architect

project manager

drawn by

checked by

job no.

date

revisions:

ISSUE FOR  
CONSTRUCTION

11/18/2022

FIRE PROTECTION PLAN  
- TOWER A - LVL 1

FP2.2A.11

1. SCOPE OF WORK INCLUDES SPRINKLER PROTECTION THROUGHOUT ALL AREAS IN ACCORDANCE WITH NFPA 13. SPRINKLERS ARE INDICATED IN AREAS WITH FINISHED CEILINGS FOR COORDINATION PURPOSES. INSTALLING CONTRACTOR SHALL BE RESPONSIBLE FOR DETAILED DESIGN OF BRANCH PIPING AND UPRIGHT SPRINKLERS IN AREAS WITHOUT FINISHED CEILINGS.
2. REFER TO TYPICAL UNIT PLANS FOR SPRINKLER LAYOUTS ON RESIDENTIAL FLOORS.

159 South Jackson St., Suite 600  
Seattle, Washington 98104 USA  
+1 206 624 5670 [olsonkundig.com](http://olsonkundig.com)

# Olson Kundig

project:  
**SOMMET BLANC - AB**  
DEER VALLEY, UTAH

**BRC Acoustics**  
1932 1st Ave, Suite  
Seattle, WA 98101

Pool Consultant  
**Cloward H20**  
2696 N University Ave  
Provo, UT 84604

**EPG Design**  
6949 South High Te  
Midvale, Utah 8404

**Specifications Write**  
**Friday Group**  
88 Mainelli Road  
Middlebury, VT

Code Consultant  
**Holmes**  
600 1st Avenue, Su  
Seattle, WA 98104

**Fire Protection Engineer**  
**Jensen Hughes**  
One Research Drive  
Westborough, MA 01581

**Vertical Transport**  
**Lerch Bates**  
19515 North Creek  
Bothell, WA 98011

**Structural Engineer**  
**Magnusson Klemme**  
1301 5th Ave, Suite  
Seattle, WA 98101

**Lighting Designer**  
**O-**  
1319 SE MLK Blvd,  
Portland, Oregon 97202

**Building Envelope C**  
**RDH**  
2101 N 34th St  
Seattle, WA 98103

**Accessibility Consultant**  
**Studio Pacifica**  
2144 Westlake Ave  
Seattle, WA 98109

**MEP Engineer**  
**WSP USA**  
1001 Fourth Ave., S  
Seattle, WA 98154

principal architect

project manag  
drawn li

GROWTH

job n

da

---

---

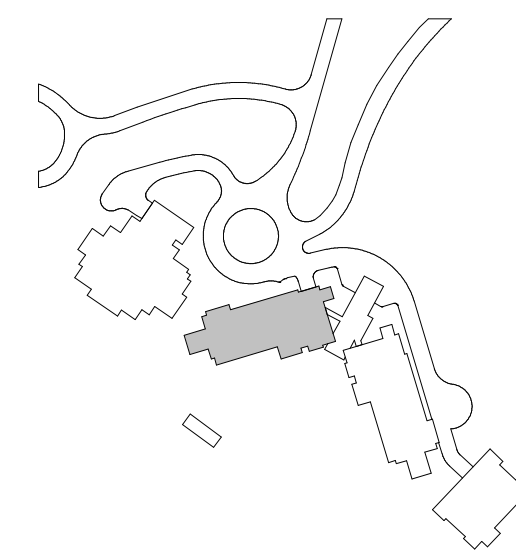
No. 0808

ISSUE  
CONST

11/1

FIRE PROTECTION PLAN  
- TOWER A - LVL 2

FP2.2A.12





1. SCOPE OF WORK INCLUDES SPRINKLER PROTECTION THROUGHOUT ALL AREAS IN ACCORDANCE WITH NFPA 13. SPRINKLERS ARE INDICATED IN AREAS WITH FINISHED CEILINGS FOR COORDINATION PURPOSES. INSTALLING CONTRACTOR SHALL BE RESPONSIBLE FOR DETAILED DESIGN OF BRANCH PIPING AND UPRIGHT SPRINKLERS IN AREAS WITHOUT FINISHED CEILINGS.
2. REFER TO TYPICAL UNIT PLANS FOR SPRINKLER LAYOUTS ON RESIDENTIAL FLOORS.

159 South Jackson St, Suite 600  
Seattle, Washington 98104 USA  
+1 206 624 5670 [olsonkundig.com](mailto:olsonkundig.com)

**SOMMET BLANC - AB**  
DEER VALLEY, UTAH

**WSP USA**  
1001 Fourth Ave., Suite 3100  
Seattle, WA 98154

[illegible]

no. \_\_\_\_\_ date \_\_\_\_\_ by \_\_\_\_\_

ISSUE FOR  
CONSTRUCTION

11/18/2022

FP2.2A.13

