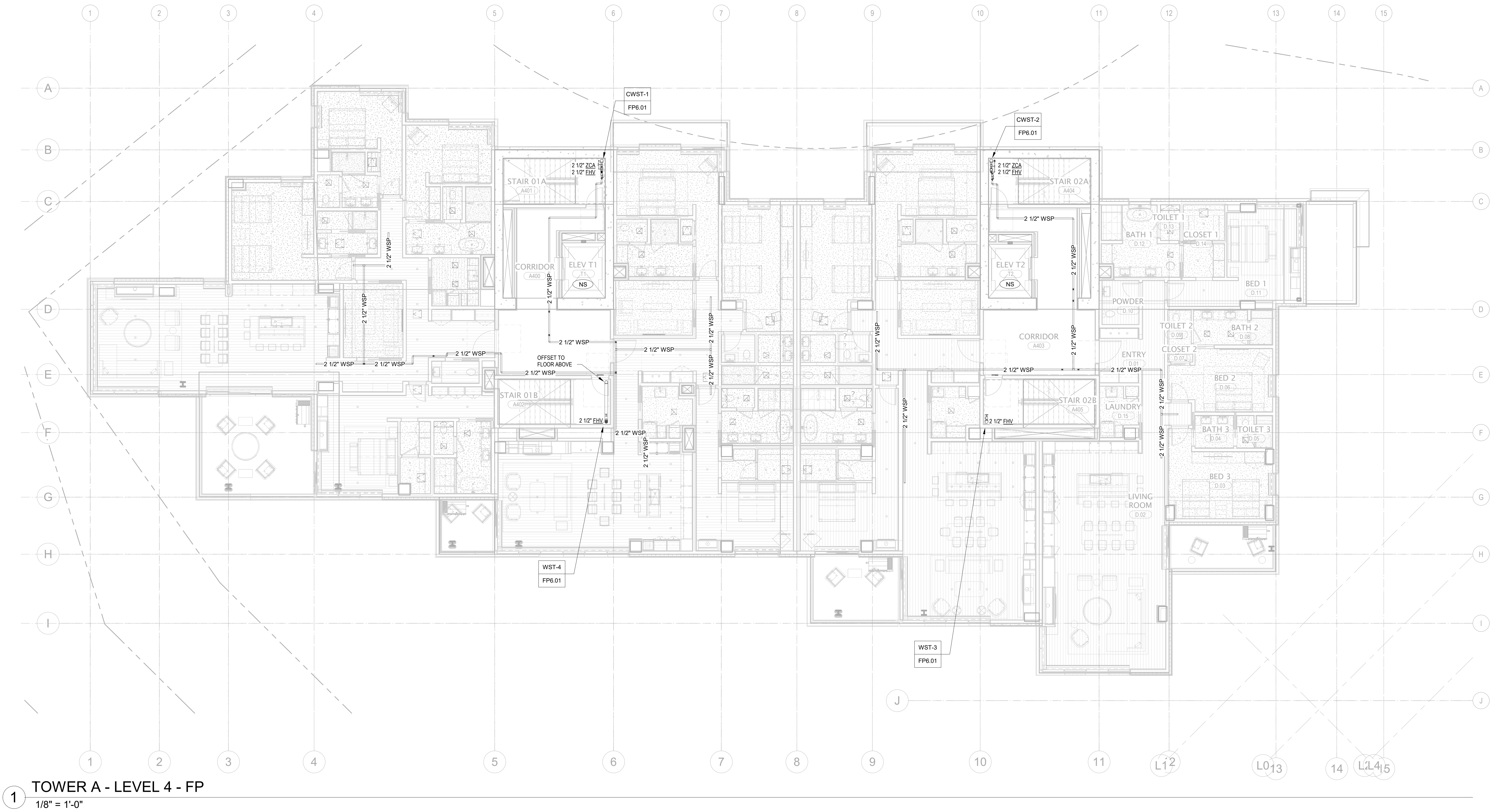


GENERAL NOTES:

- SCOPE OF WORK INCLUDES SPRINKLER PROTECTION THROUGHOUT ALL AREAS IN ACCORDANCE WITH NFPA 13. SPRINKLERS ARE INDICATED IN AREAS WITH FINISHED CEILINGS FOR COORDINATION PURPOSES. INSTALLING CONTRACTOR SHALL BE RESPONSIBLE FOR DETAILED DESIGN OF BRANCH PIPING AND UPRIGHT SPRINKLERS IN AREAS WITHOUT FINISHED CEILINGS.
- REFER TO TYPICAL UNIT PLANS FOR SPRINKLER LAYOUTS ON RESIDENTIAL FLOORS.



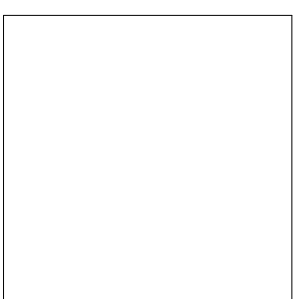
1 TOWER A - LEVEL 4 - FP
1/8" = 1'-0"

Reserved for permit stamp

109 South Jackson St., Suite 600
Seattle, Washington 98104 USA
+1 206 834 2677 olsonkundig.com

Olson Kundig

project
SOMMET BLANC - AB
DEER VALLEY, UTAH



White Summit Development, LLC
PO Box 980022
Park City, Utah 84098

Acoustic Consultant
BRC Acoustics
1932 1st Ave, Suite 620
Seattle, WA 98101

Pool Consultant
Cloward M20
2696 N University Ave, Suite 290
Provo, UT 84604

Landscape Architect
EPG Design
6948 South High Tech Drive, Suite 100
Midvale, Utah 84047

Specifications Writer
Friday Group
86 Mainelli Road
Middlebury, VT

Code Consultant
Holmes
600 1st Avenue, Suite 200A
Seattle, WA 98104

Fire Protection Engineer
Jensen Hughes
One Research Drive, Suite 305C
Westborough, MA 01581

Vertical Transportation Consultant
Larch Bates
19515 North Creek Parkway, Suite 304
Bothell, WA 98011

Structural Engineer
Magnusson Klemencic Associates
1301 5th Ave, Suite 3200
Seattle, WA 98101

Lighting Designer
O-
1319 SE MLK Blvd, Suite 210
Portland, Oregon 97219

Building Envelope Consultant
RDH
2101 N 34th St
Seattle, WA 98103

Accessibility Consultant
Studio Pacifica
2144 Westlake Ave N, Suite F
Seattle, WA 98109

MEP Engineer
WSP USA
1001 Fourth Ave., Suite 3100
Seattle, WA 98154

principal architect _____
project manager _____ JCC
drawn by _____ CRB_SMK
checked by _____ Checker
job no. _____ 2052
date _____ 11/18/2022

revisions:

no. _____ date _____ by _____

ISSUE FOR
CONSTRUCTION
11/18/2022

FIRE PROTECTION PLAN
- TOWER A - LVL 4

FP2.2A.14

GENERAL NOTES:

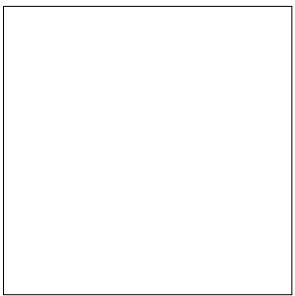
- SCOPE OF WORK INCLUDES SPRINKLER PROTECTION THROUGHOUT ALL AREAS IN ACCORDANCE WITH NFPA 13. SPRINKLERS ARE INDICATED IN AREAS WITH FINISHED CEILINGS FOR COORDINATION PURPOSES. INSTALLING CONTRACTOR SHALL BE RESPONSIBLE FOR DETAILED DESIGN OF BRANCH PIPING AND UPRIGHT SPRINKLERS IN AREAS WITHOUT FINISHED CEILINGS.
- REFER TO TYPICAL UNIT PLANS FOR SPRINKLER LAYOUTS ON RESIDENTIAL FLOORS.

Reserved for permit stamp

100 South Jackson St., Suite 600
Seattle, Washington 98104 USA
+1 206 834 2677 olsonkundig.com

Olson Kundig

project
SOMMET BLANC - AB
DEER VALLEY, UTAH



White Summit Development, LLC
PO Box 980022
Park City, Utah 84098

Acoustic Consultant
BRC Acoustics
1932 1st Ave, Suite 620
Seattle, WA 98101

Pool Consultant
Cloward H2O
2696 N University Ave, Suite 290
Provo, UT 84604

Landscape Architect
EPG Design
6948 South High Tech Drive, Suite 100
Midvale, Utah 84047

Specifications Writer
Friday Group
86 Mainelli Road
Middlebury, VT

Code Consultant
Holmes
600 1st Avenue, Suite 200A
Seattle, WA 98104

Fire Protection Engineer
Jensen Hughes
One Research Drive, Suite 305C
Westborough, MA 01581

Vertical Transportation Consultant
Larch Bates
19515 North Creek Parkway, Suite 304
Bothell, WA 98011

Structural Engineer
Magnusson Klemencic Associates
1301 5th Ave, Suite 3200
Seattle, WA 98101

Lighting Designer
O
1319 SE MLK Blvd, Suite 210
Portland, Oregon 97219

Building Envelope Consultant
RDH
2101 N 34th St
Seattle, WA 98103

Accessibility Consultant
Studio Pacifica
2144 Westlake Ave N, Suite F
Seattle, WA 98109

MEP Engineer
WSP USA
1001 Fourth Ave., Suite 3100
Seattle, WA 98154

principal architect _____
project manager _____ JCC
drawn by _____ CRB_SML
checked by _____ Checker
job no. _____ 2052
date _____ 11/18/2022

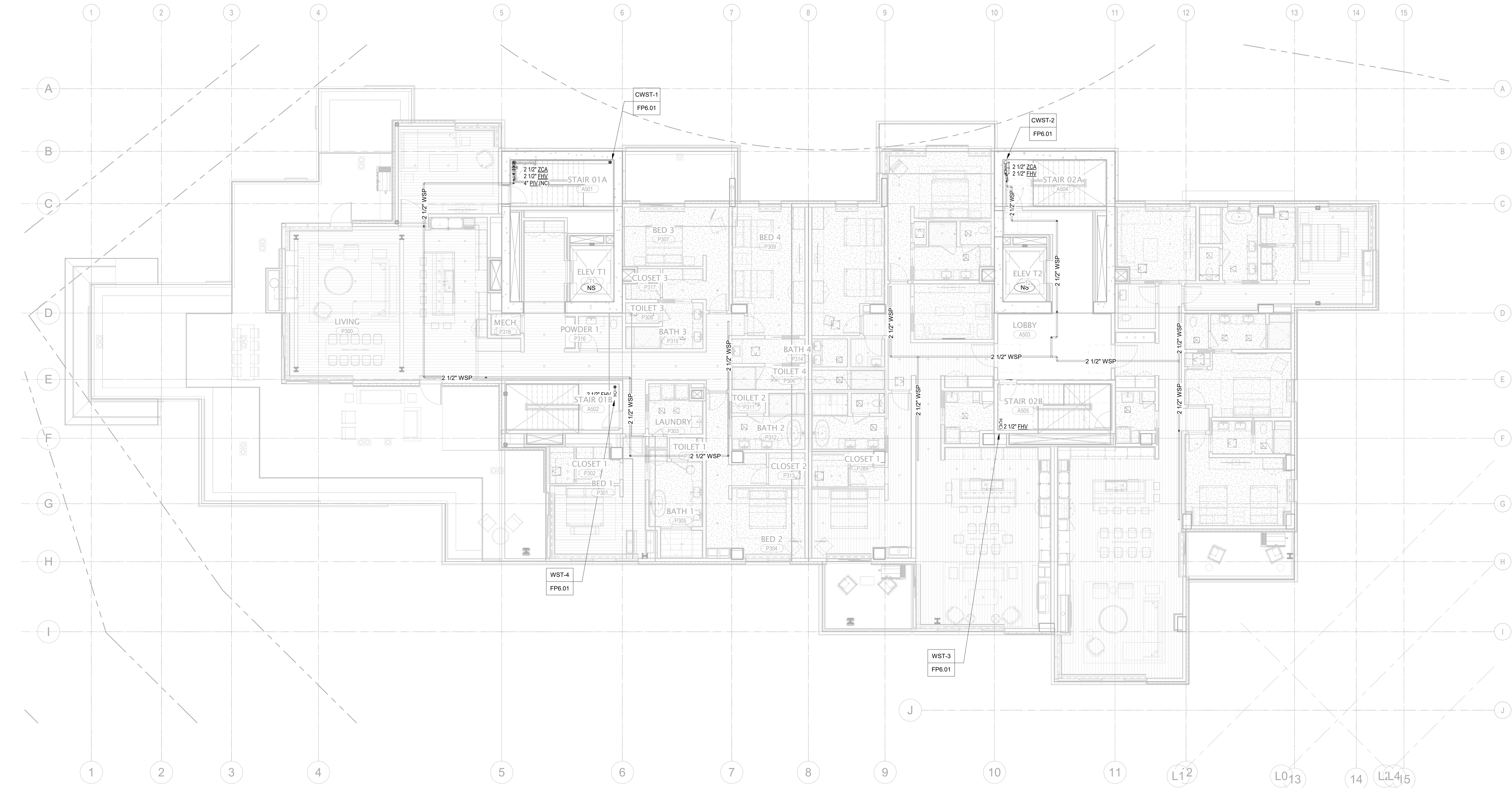
revisions:

no. _____ date _____ by _____

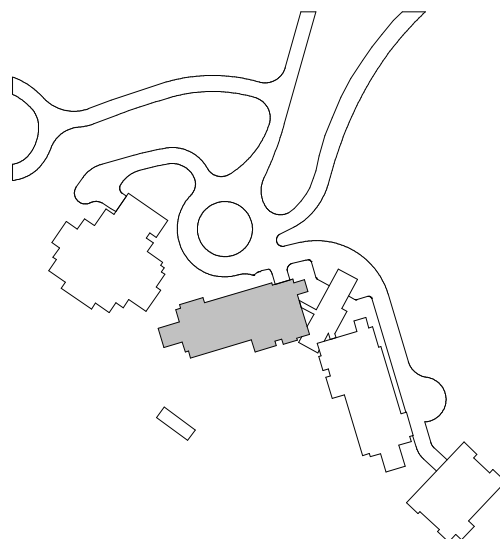
ISSUE FOR
CONSTRUCTION
11/18/2022

FIRE PROTECTION PLAN
- TOWER A - LVL 5

FP2.2A.15

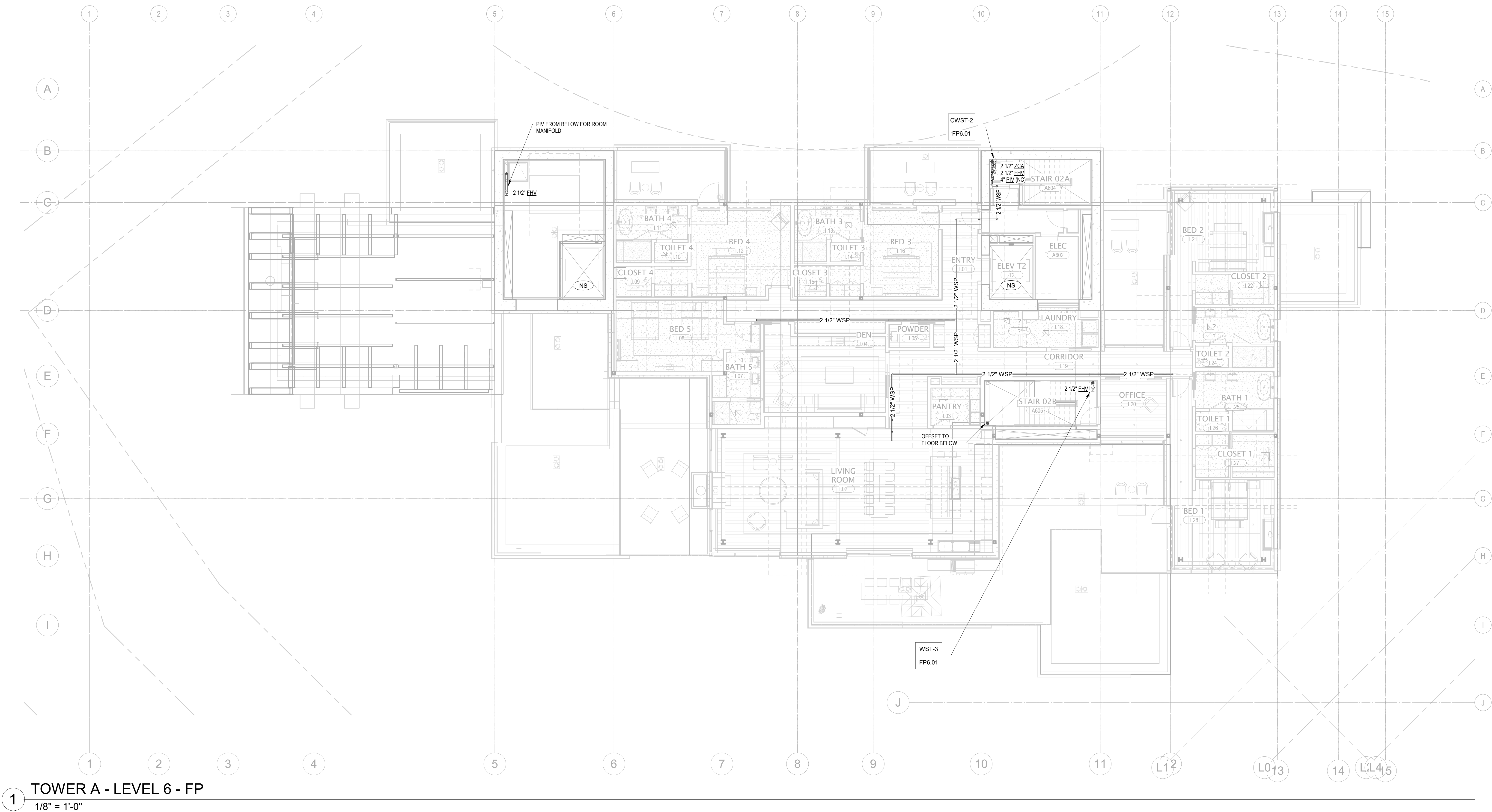


1 TOWER A - LEVEL 5 - FP
1/8" = 1'-0"



GENERAL NOTES:

- SCOPE OF WORK INCLUDES SPRINKLER PROTECTION THROUGHOUT ALL AREAS IN ACCORDANCE WITH NFPA 13. SPRINKLERS ARE INDICATED IN AREAS WITH FINISHED CEILING FOR COORDINATION PURPOSES. INSTALLING CONTRACTOR SHALL BE RESPONSIBLE FOR DETAILED DESIGN OF BRANCH PIPING AND UPRIGHT SPRINKLERS IN AREAS WITHOUT FINISHED CEILINGS.
- REFER TO TYPICAL UNIT PLANS FOR SPRINKLER LAYOUTS ON RESIDENTIAL FLOORS.



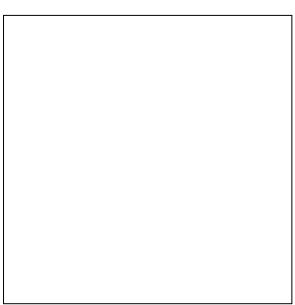
1 TOWER A - LEVEL 6 - FP
1/8" = 1'-0"

Reserved for permit stamp

109 South Jackson St., Suite 600
Seattle, Washington 98104 USA
+1 206 834 2877 olsonkundig.com

Olson Kundig

project
SOMMET BLANC - AB
DEER VALLEY, UTAH



White Summit Development, LLC
PO Box 980022
Park City, Utah 84098

Acoustic Consultant
BRC Acoustics
1932 1st Ave, Suite 620
Seattle, WA 98101

Pool Consultant
Cloward H2O
2698 N University Ave, Suite 290
Provo, UT 84604

Landscape Architect
EPG Design
6948 South High Tech Drive, Suite 100
Midvale, Utah 84047

Specifications Writer
Friday Group
86 Mainelli Road
Middlebury, VT

Code Consultant
Holmes
600 1st Avenue, Suite 200A
Seattle, WA 98104

Fire Protection Engineer
Jensen Hughes
One Research Drive, Suite 305C
Westborough, MA 01581

Vertical Transportation Consultant
Larch Bates
19515 North Creek Parkway, Suite 304
Bothell, WA 98011

Structural Engineer
Magnusson Klemencic Associates
1301 5th Ave, Suite 3200
Seattle, WA 98101

Lighting Designer
O
1319 SE MLK Blvd, Suite 210
Portland, Oregon 97219

Building Envelope Consultant
RDH
2101 N 34th St
Seattle, WA 98103

Accessibility Consultant
Studio Pacifica
2144 Westlake Ave N, Suite F
Seattle, WA 98109

MEP Engineer
WSP USA
1001 Fourth Ave., Suite 3100
Seattle, WA 98154

principal architect—JCC
project manager—JCC
drawn by—CRB_SMR

checked by—Checker
job no. 2052
date 11/18/2022

revisions:

no. date by

ISSUE FOR
CONSTRUCTION
11/18/2022

FIRE PROTECTION PLAN
- TOWER A - LVL 6

FP2.2A.16

GENERAL NOTES:

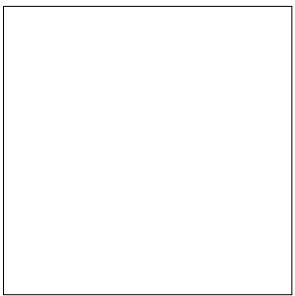
- SCOPE OF WORK INCLUDES SPRINKLER PROTECTION THROUGHOUT ALL AREAS IN ACCORDANCE WITH NFPA 13. SPRINKLERS ARE INDICATED IN AREAS WITH FINISHED CEILING. FOR COORDINATION PURPOSES, INSTALLING CONTRACTOR SHALL BE RESPONSIBLE FOR DETAILED DESIGN OF BRANCH PIPING AND UPRIGHT SPRINKLERS IN AREAS WITHOUT FINISHED CEILING.
- REFER TO TYPICAL UNIT PLANS FOR SPRINKLER LAYOUTS ON RESIDENTIAL FLOORS.

Reserved for permit stamp

100 South Jackson St, Suite 600
Seattle, Washington 98104 USA
+1 206 834 2877 olsonkundig.com

Olson Kundig

project
SOMMET BLANC - AB
DEER VALLEY, UTAH



White Summit Development, LLC
PO Box 980022
Park City, Utah 84098

Acoustic Consultant
BRC Acoustics
1932 1st Ave, Suite 620
Seattle, WA 98101

Pool Consultant
Cloward M20
2696 N University Ave, Suite 290
Provo, UT 84604

Landscape Architect
EPG Design
6949 South High Tech Drive, Suite 100
Midvale, Utah 84047

Specifications Writer
Friday Group
86 Mainelli Road
Middlebury, VT

Code Consultant
Holmes
600 1st Avenue, Suite 200A
Seattle, WA 98104

Fire Protection Engineer
Jensen Hughes
One Research Drive, Suite 305C
Westborough, MA 01581

Vertical Transportation Consultant
Larch Bates
19515 North Creek Parkway, Suite 304
Bothell, WA 98011

Structural Engineer
Magnusson Klemencic Associates
1301 5th Ave, Suite 3200
Seattle, WA 98101

Lighting Designer
O
1319 SE MLK Blvd, Suite 210
Portland, Oregon 97219

Building Envelope Consultant
RDH
2101 N 34th St
Seattle, WA 98103

Accessibility Consultant
Studio Pacifica
2144 Westlake Ave N, Suite F
Seattle, WA 98109

MEP Engineer
WSP USA
1001 Fourth Ave., Suite 3100
Seattle, WA 98154

principal architect _____
project manager _____ JCC
drawn by _____ CRB, SMW
checked by _____ Checker
job no. _____ 2052
date _____ 11/18/2022

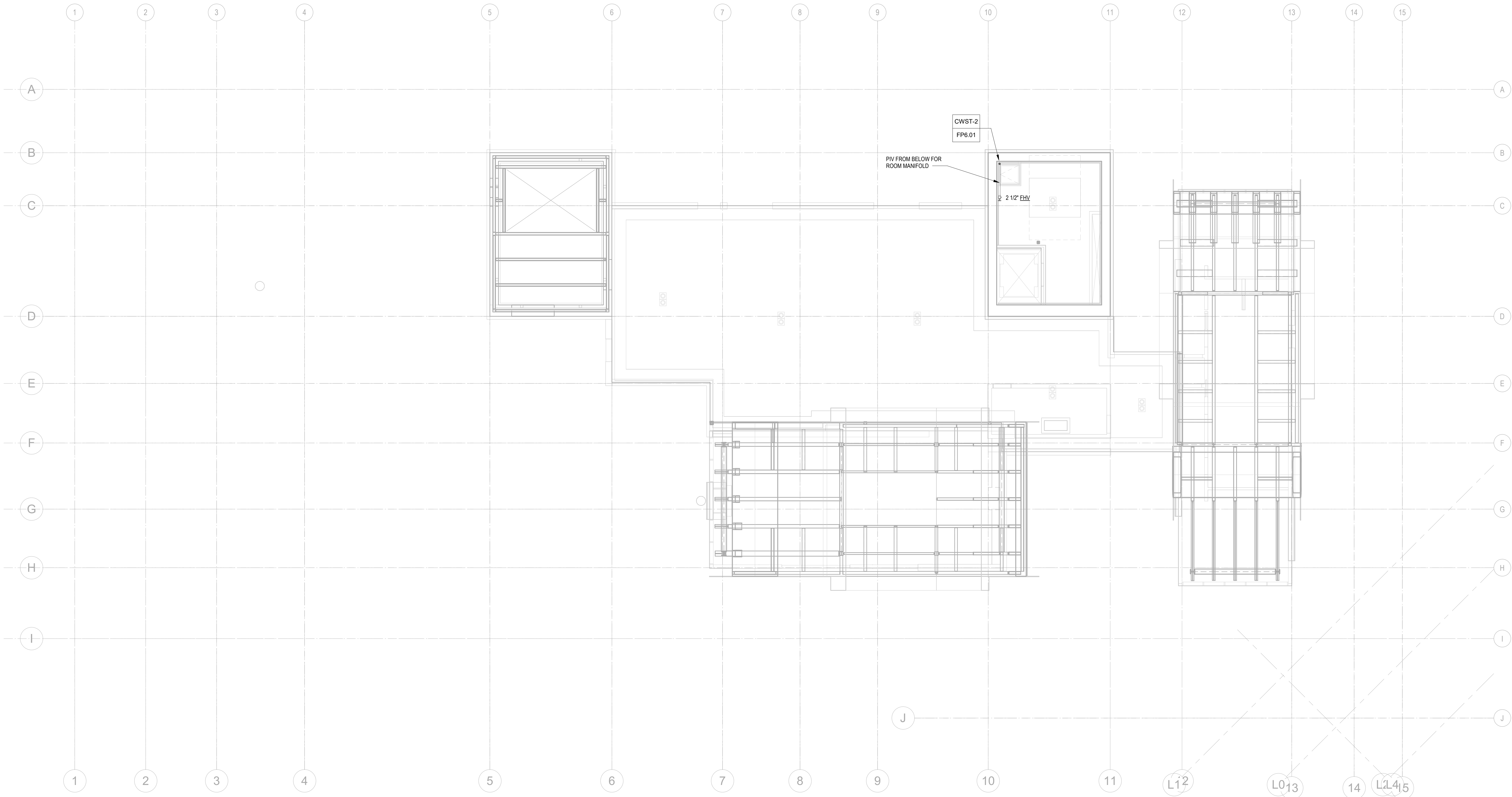
revisions:

no. _____ date _____ by _____

ISSUE FOR
CONSTRUCTION
11/18/2022

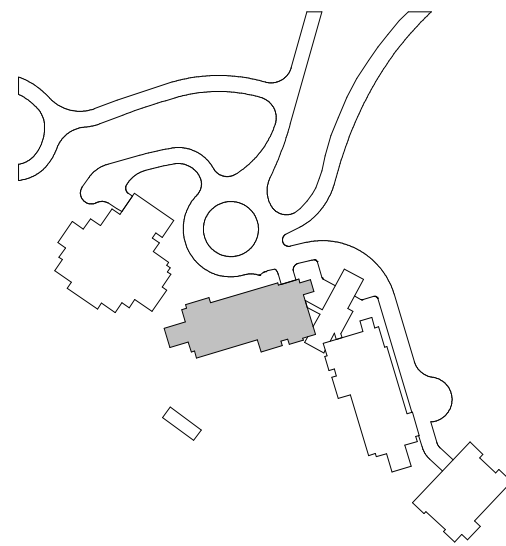
FIRE PROTECTION PLAN
- TOWER A - ROOF

FP2.2A.R



1 TOWER A - ROOF - FP

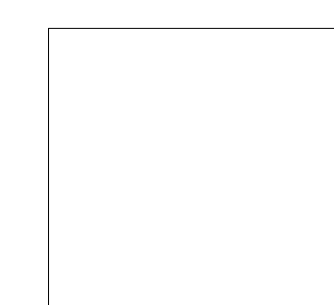
1/8" = 1'-0"



1. SCOPE OF WORK INCLUDES SPRINKLER PROTECTION THROUGHOUT ALL AREAS IN ACCORDANCE WITH NFPA 13. SPRINKLERS ARE INDICATED IN AREAS WITH FINISHED CEILINGS FOR COORDINATION PURPOSES. INSTALLING CONTRACTOR SHALL BE RESPONSIBLE FOR DETAILED DESIGN OF BRANCH PIPING AND UPRIGHT SPRINKLERS IN AREAS WITHOUT FINISHED CEILINGS.
2. REFER TO TYPICAL UNIT PLANS FOR SPRINKLER LAYOUTS ON RESIDENTIAL FLOORS.

159 South Jackson St, Suite 800
Seattle, Washington 98104 USA
+1 206 624 5670 olsonkundig.com

project: **SOMMET BLANC - AB**
DEER VALLEY, UTAH



Acoustic Consultant
BRC Acoustics
1932 1st Ave. Suite 1

Pool Consultant
Cloward H2O
2696 N University Av
Provo, UT 84604

Landscape Architect
EPG Design
6949 South High Tech
Midvale, Utah 84047

Specifications Writer
Friday Group
88 Mainelli Road
Middlebury, VT

Code Consultant
Holmes
600 1st Avenue, Suite
Seattle, WA 98104

Fire Protection Engineer
Jensen Hughes
One Research Drive
Westborough, MA 01581

Vertical Transportation
Lerch Bates
19515 North Creek F
Bothell, WA 98011

Structural Engineer
Magnusson Klemencic
1301 5th Ave, Suite 1000
Seattle, WA 98101

Lighting Designer
O-
1319 SE MLK Blvd, S
Portland, Oregon 97214

Building Envelope Co.
RDH
2101 N 34th St
Seattle, WA 98103

Accessibility Consultant
Studio Pacifica
2144 Westlake Ave N
Seattle, WA 98109

MEP Engineer
WSP USA
1001 Fourth Ave., Suite 1000
Seattle, WA 98154

principal architect
project manager

checked by
job no.

revisions:

no.	date
-----	------

ISSU
CONSTR

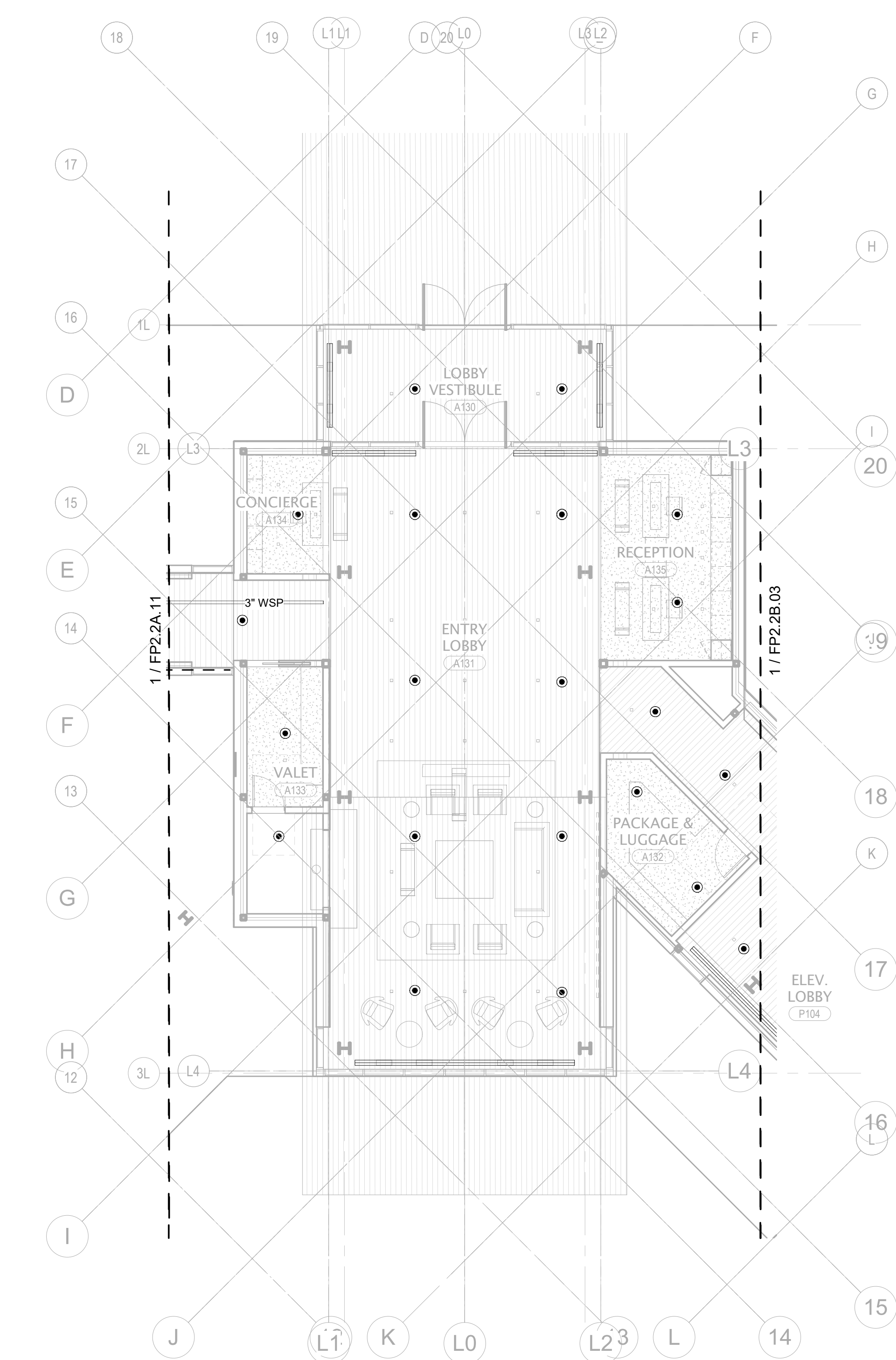
11/18

FIRE PROTE

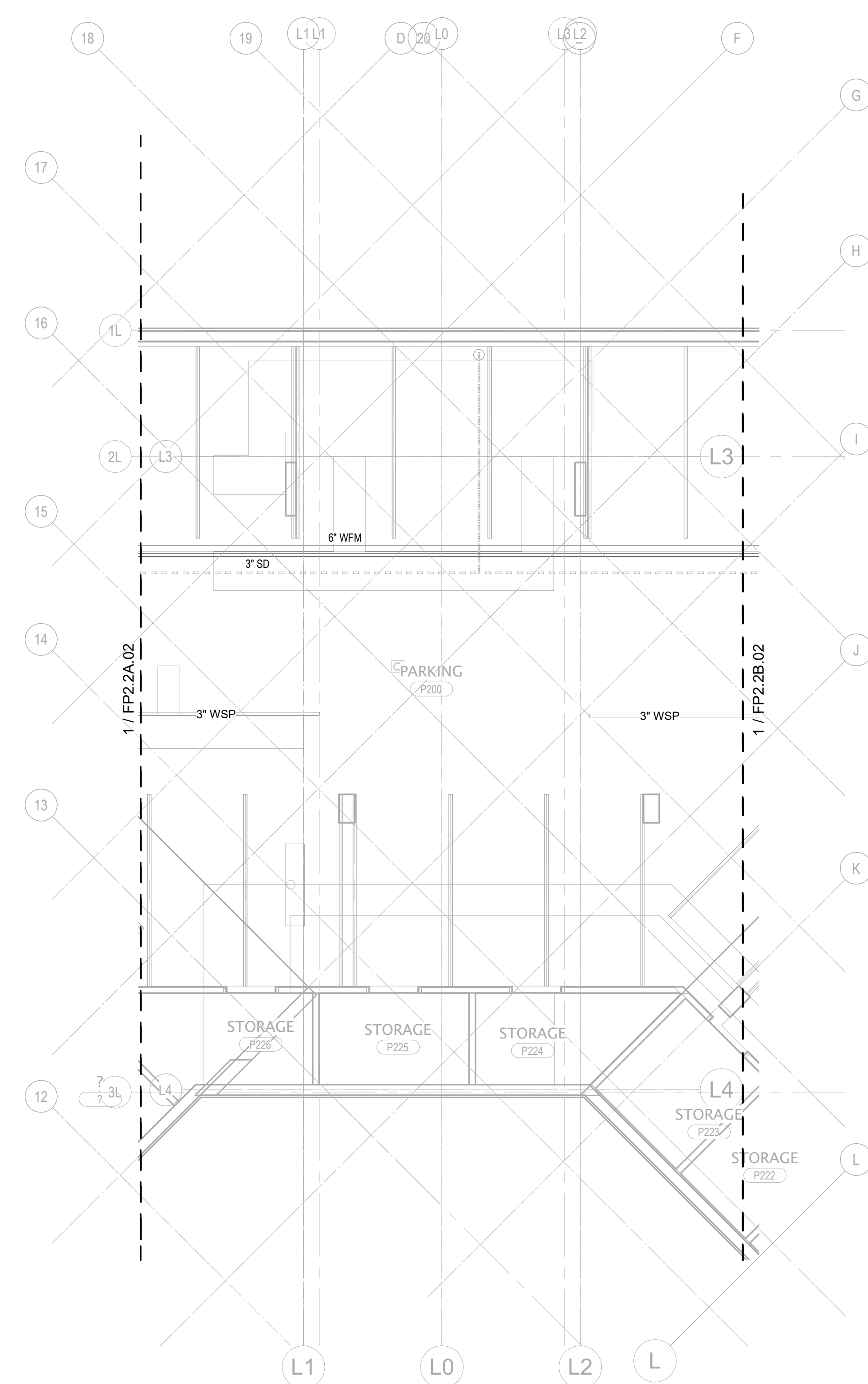
- TOWER AB

END

2.2



1 TOWER AB LOBBY - LEVEL 1 - FP
1/8" = 1'-0"



2 TOWER AB LOBBY - PARKING LEVEL 2 - FP
1/8" = 1'-0"

