

1. SCOPE OF WORK INCLUDES SPRINKLER PROTECTION THROUGHOUT ALL AREAS IN ACCORDANCE WITH NFPA 13. SPRINKLERS ARE INDICATED IN HYDRAULIC CALCULATION REMOTE AREAS AND AREAS WITH FINISHED CEILINGS FOR COORDINATION PURPOSES. INSTALLING CONTRACTOR SHALL BE RESPONSIBLE FOR DETAILED DESIGN OF BRANCH PIPING AND UPRIGHT SPRINKLERS IN AREAS WITHOUT FINISHED CEILINGS.



Olson Kundig

SOMMET BLANC - C
DEER VALLEY, UTAH

principal architect: TK
project manager: JCC
drawn by: CRB, SMK
checked by: Checker
job no. 20052
date 11/18/2022

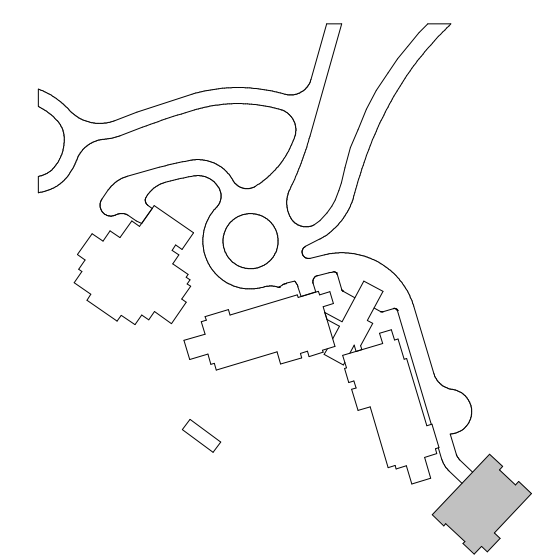
[illegible]

no. date _____ by _____

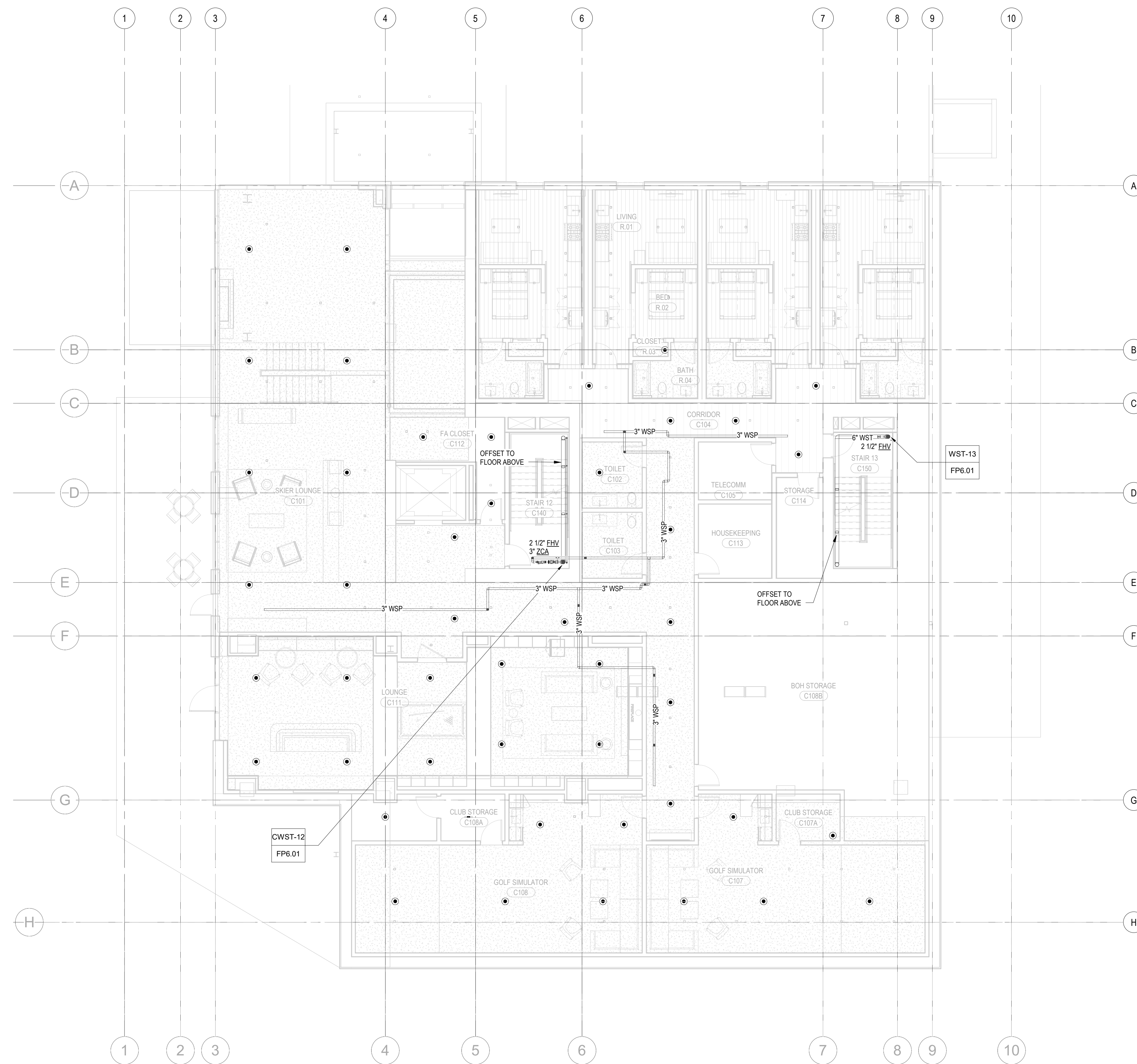
ISSUE FOR
CONSTRUCTION
11/18/2022

FIRE PROTECTION PLAN
TOWER C - PARKING
LEVEL

FP2.2C.01



1. SCOPE OF WORK INCLUDES SPRINKLER PROTECTION THROUGHOUT ALL AREAS IN ACCORDANCE WITH NFPA 13. SPRINKLERS ARE INDICATED IN HYDRAULIC CALCULATION REMOTE AREAS AND AREAS WITH FINISHED CEILINGS FOR COORDINATION PURPOSES. INSTALLING CONTRACTOR SHALL BE RESPONSIBLE FOR DETAILED DESIGN OF BRANCH PIPING AND UPRIGHT SPRINKLERS IN AREAS WITHOUT FINISHED CEILINGS.



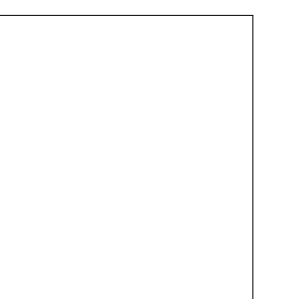
1 TOWER C - LEVEL 1 - FP
1/8" = 1'-0"

Reserved for permit stamp	
---------------------------	--

159 South Jackson St, Suite 600
Seattle, Washington 98104 USA
+1 206 624 5670 olsonkundig.com

Olson Kundig

SOMMET BLANC - C
DEER VALLEY, UTAH



White Summit Development, LLC
PO Box 980022
Park City, Utah 84098

Acoustic Consultant
BRC Acoustics
1932 1st Ave, Suite 620
Seattle, WA 98101

Pool Consultant
Cloward H2O
2696 N University Ave, Suite 290
Provo, UT 84604

EPG Design
8949 South High Tech Drive, Suite 100
Midvale, Utah 84047

Specifications Writer
Friday Group
88 Mainelli Road
Middlebury, VT

Code Consultant
Holmes
800 1st Avenue, Suite 200A
Seattle, WA 98104

Fire Protection Engineer
Jensen Hughes
One Research Drive, Suite 305C
Westborough, MA 01581

Vertical Transportation Consultant
Lerch Bates
19515 North Creek Parkway, Suite 304
Bothell, WA 98011

Structural Engineer
Magnusson Klemencic Associates
1301 5th Ave, Suite 3200
Seattle, WA 98101

Lighting Designer
O-
1319 SE MLK Blvd, Suite 210
Portland, Oregon 97219

Building Envelope Consultant
RDH
2101 N 34th St
Seattle, WA 98103

Accessibility Consultant
Studio Pacifica
2144 Westlake Ave N, Suite F
Seattle, WA 98109

MEP Engineer
WSP USA
1001 Fourth Ave., Suite 3100
Seattle, WA 98154

principal architect TK
project manager JCC
drawn by CRB, SMK

checked by Checker
job no. 20052
date 11/18/2022

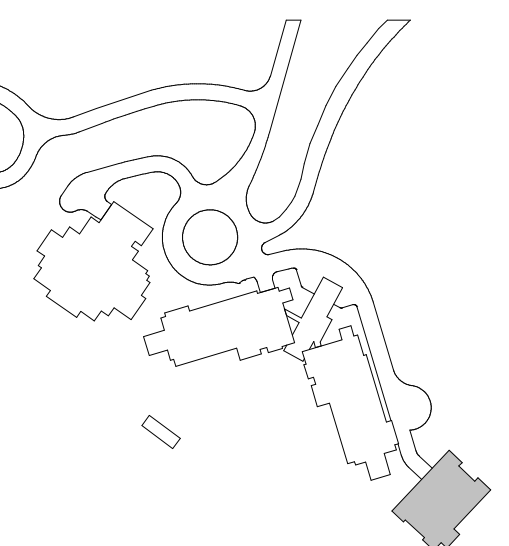
revisions:

no. date _____ by _____

ISSUE FOR
CONSTRUCTION
11/18/2022

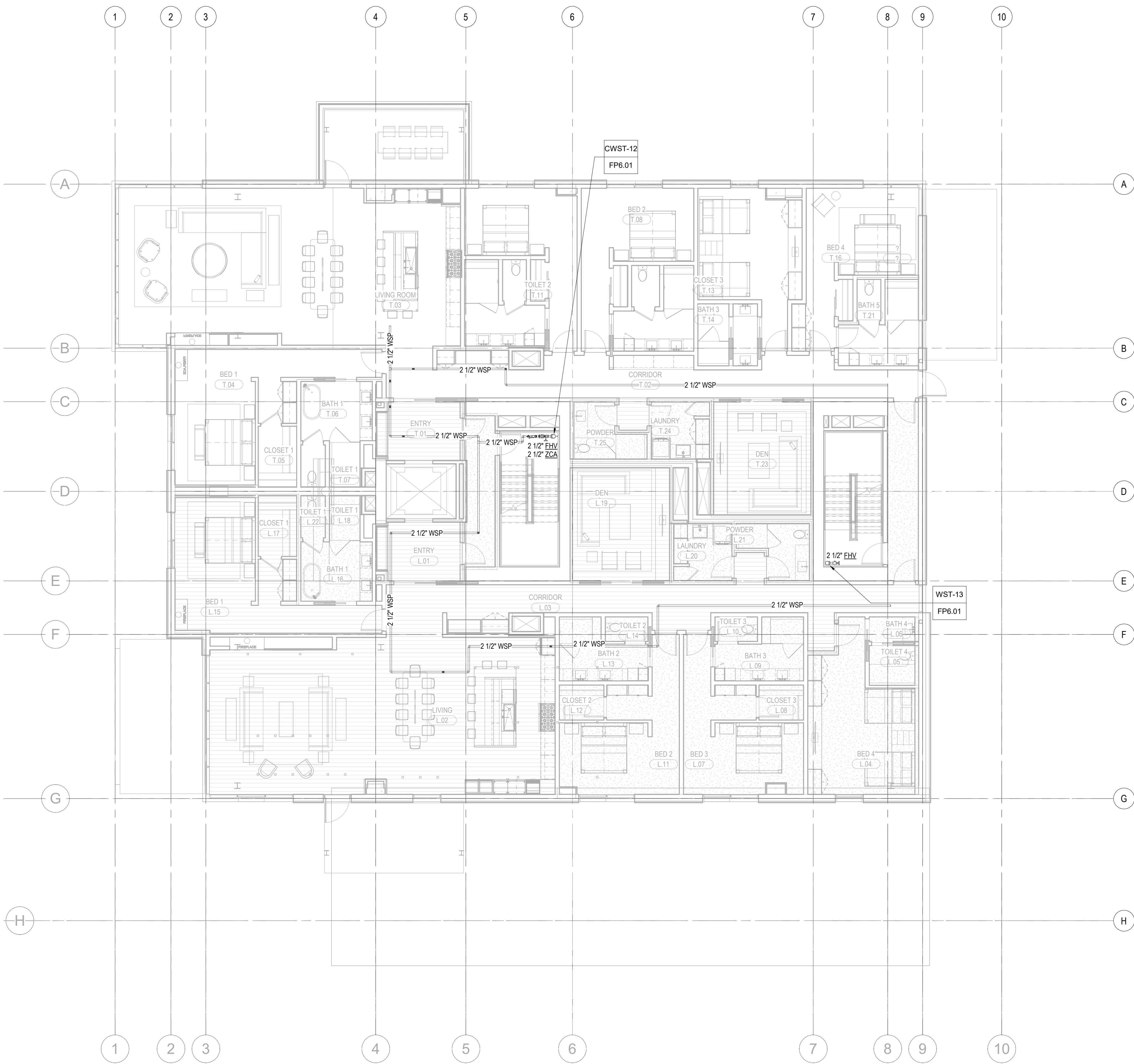
FIRE PROTECTION PLAN
TOWER C - LEVEL 1

FP2.2C.11



GENERAL NOTES:

1. SCOPE OF WORK INCLUDES SPRINKLER PROTECTION THROUGHOUT ALL AREAS IN ACCORDANCE WITH NFPA 13. SPRINKLERS ARE INDICATED IN HYDRAULIC CALCULATION REMOTE AREAS AND AREAS WITH FINISHED CEILINGS FOR COORDINATION PURPOSES. INSTALLING CONTRACTOR SHALL BE RESPONSIBLE FOR DETAILED DESIGN OF BRANCH PIPING AND UPRIGHT SPRINKLERS IN AREAS WITHOUT FINISHED CEILINGS.



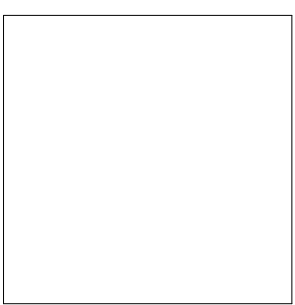
1 TOWER C - LEVEL 2 - FP
1/8" = 1'-0"

Reserved for permit stamp

100 South Jackson St., Suite 600
Seattle, Washington 98104 USA
+1 206 834 2877 olsonkundig.com

Olson Kundig

project
SOMMET BLANC - C
DEER VALLEY, UTAH



White Summit Development, LLC
PO Box 980022
Park City, Utah 84098

Acoustic Consultant
BRC Acoustics
1932 1st Ave, Suite 620
Seattle, WA 98101

Pool Consultant
Cloward H2O
2696 N University Ave, Suite 290
Provo, UT 84604

Landscape Architect
EPG Design
6948 South High Tech Drive, Suite 100
Midvale, Utah 84047

Specifications Writer
Friday Group
86 Mainelli Road
Middlebury, VT

Code Consultant
Holmes
600 1st Avenue, Suite 200A
Seattle, WA 98104

Fire Protection Engineer
Jensen Hughes
One Research Drive, Suite 305C
Westborough, MA 01581

Vertical Transportation Consultant
Larch Bates
19515 North Creek Parkway, Suite 304
Bothell, WA 98011

Structural Engineer
Magnusson Klemencic Associates
1301 5th Ave, Suite 3200
Seattle, WA 98101

Lighting Designer
O-
1319 SE MLK Blvd, Suite 210
Portland, Oregon 97219

Building Envelope Consultant
RDH
2101 N 34th St
Seattle, WA 98103

Accessibility Consultant
Studio Pacifica
2144 Westlake Ave N, Suite F
Seattle, WA 98109

MEP Engineer
WSP USA
1001 Fourth Ave., Suite 3100
Seattle, WA 98154

principal architect: JK
project manager: JCC
drawn by: CRB_SMK
checked by: Checker
job no.: 2052
date: 11/18/2022

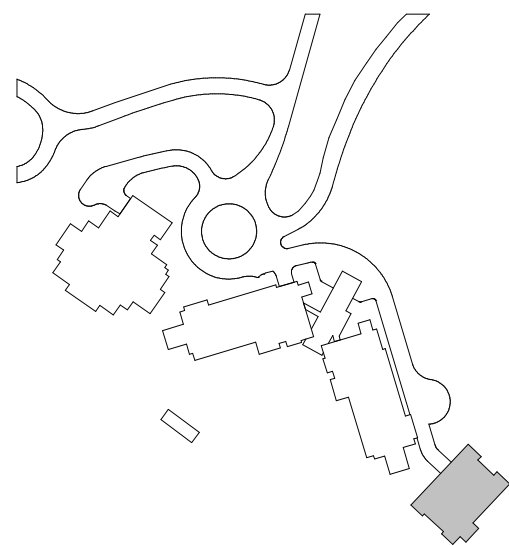
revisions:

no. _____ date _____ by _____

ISSUE FOR
CONSTRUCTION
11/18/2022

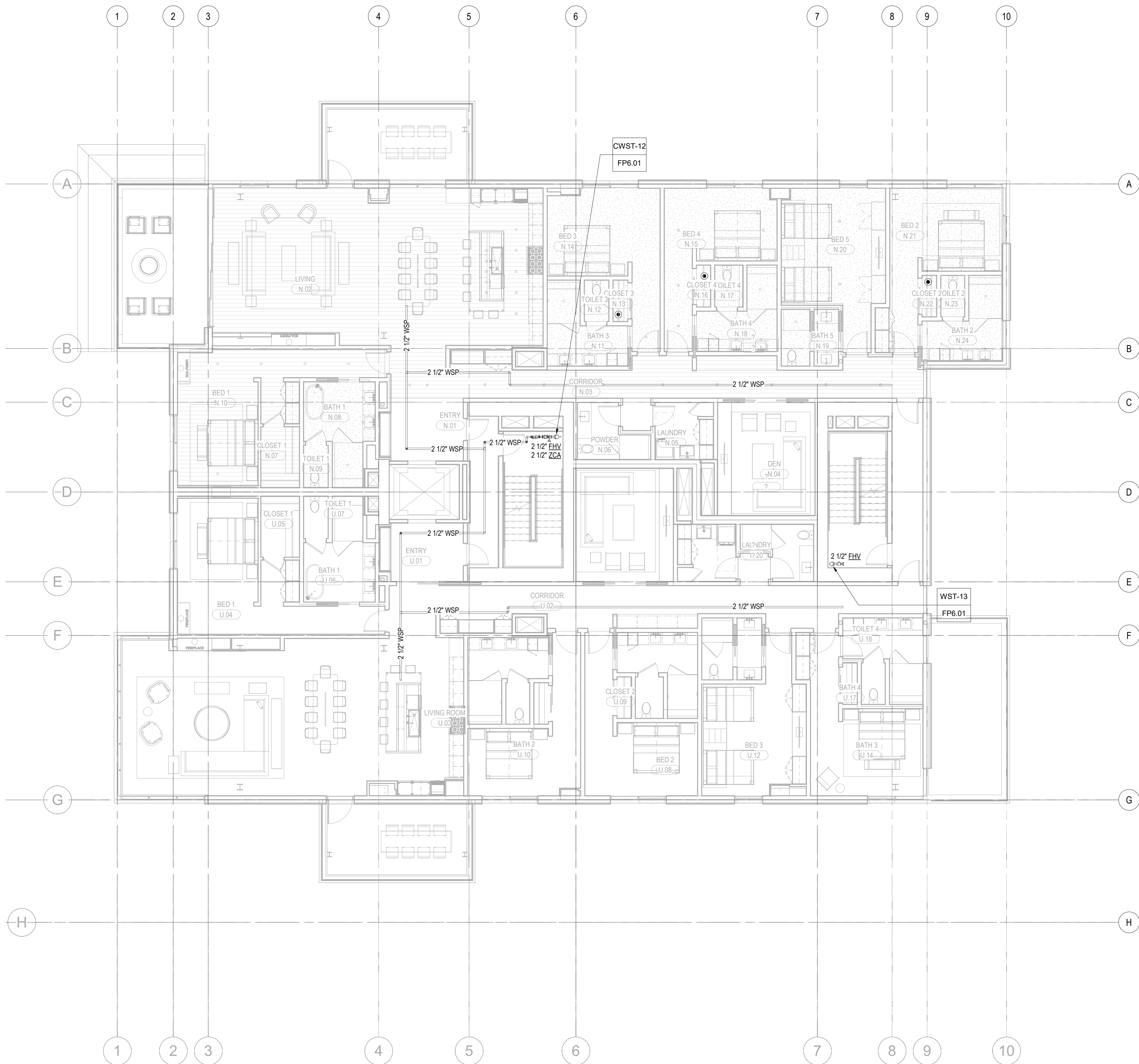
FIRE PROTECTION PLAN
- TOWER C - LEVEL 2

FP2.2C.12



GENERAL NOTES:

1. SCOPE OF WORK INCLUDES SPRINKLER PROTECTION THROUGHOUT ALL AREAS IN ACCORDANCE WITH NFPA 13. SPRINKLERS ARE INDICATED IN HYDRAULIC CALCULATION REMOTE AREAS AND AREAS WITH FINISHED CEILINGS FOR COORDINATION PURPOSES. INSTALLING CONTRACTOR SHALL BE RESPONSIBLE FOR DETAILED DESIGN OF BRANCH PIPING AND UPRIGHT SPRINKLERS IN AREAS WITHOUT FINISHED CEILINGS.



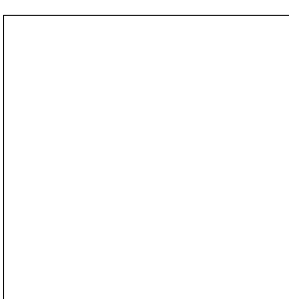
1 TOWER C - LEVEL 3 - FP
1/8" = 1'-0"

Reserved for permit stamp

100 South Jackson St., Suite 600
Seattle, Washington 98104 USA
+1 206 834 2870 olsonkundig.com

Olson Kundig

project
SOMMET BLANC - C
DEER VALLEY, UTAH



White Summit Development, LLC
PO Box 980022
Park City, Utah 84098

Acoustic Consultant
BRC Acoustics
1932 1st Ave, Suite 620
Seattle, WA 98101

Pool Consultant
Cloward H2O
2698 N University Ave, Suite 290
Provo, UT 84604

Landscape Architect
EPG Design
6948 South High Tech Drive, Suite 100
Midvale, Utah 84047

Specifications Writer
Friday Group
86 Mainell Road
Middlebury, VT

Code Consultant
Holmes
600 1st Avenue, Suite 200A
Seattle, WA 98104

Fire Protection Engineer
Jensen Hughes
One Research Drive, Suite 305C
Westborough, MA 01581

Vertical Transportation Consultant
Larch Bates
19515 North Creek Parkway, Suite 304
Bothell, WA 98011

Structural Engineer
Magnusson Klemencic Associates
1301 5th Ave, Suite 3200
Seattle, WA 98101

Lighting Designer
O
1319 SE MLK Blvd, Suite 210
Portland, Oregon 97219

Building Envelope Consultant
RDH
2101 N 34th St
Seattle, WA 98103

Accessibility Consultant
Studio Pacifica
2144 Westlake Ave N, Suite F
Seattle, WA 98109

MEP Engineer
WSP USA
1001 Fourth Ave., Suite 3100
Seattle, WA 98154

principal architect—JK
project manager—JCC
drawn by—CRB_SMK
checked by—Checker
job no. 2052
date 11/18/2022

revisions:

no. date by

ISSUE FOR
CONSTRUCTION
11/18/2022

FIRE PROTECTION PLAN
- TOWER C - LEVEL 3

FP2.2C.13

GENERAL NOTES:

1. SCOPE OF WORK INCLUDES SPRINKLER PROTECTION THROUGHOUT ALL AREAS IN ACCORDANCE WITH NFPA 13. SPRINKLERS ARE INDICATED IN HYDRAULIC CALCULATION REMOTE AREAS AND AREAS WITH FINISHED CEILINGS FOR COORDINATION PURPOSES. INSTALLING CONTRACTOR SHALL BE RESPONSIBLE FOR DETAILED DESIGN OF BRANCH PIPING AND UPRIGHT SPRINKLERS IN AREAS WITHOUT FINISHED CEILINGS.



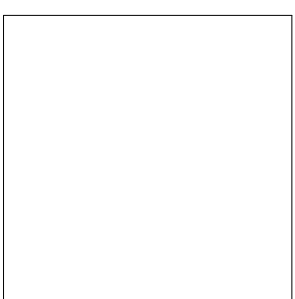
1 TOWER C - LEVEL 4 - FP
1/8" = 1'-0"

Reserved for permit stamp

109 South Jackson St., Suite 600
Seattle, Washington 98104 USA
+1 206 834 2870 olsonkundig.com

Olson Kundig

project
SOMMET BLANC - C
DEER VALLEY, UTAH



White Summit Development, LLC
PO Box 980022
Park City, Utah 84098

Acoustic Consultant
BRC Acoustics
1932 1st Ave, Suite 620
Seattle, WA 98101

Pool Consultant
Cloward H2O
2698 N University Ave, Suite 290
Provo, UT 84604

Landscape Architect
EPG Design
6948 South High Tech Drive, Suite 100
Midvale, Utah 84047

Specifications Writer
Friday Group
86 Mainelli Road
Middlebury, VT

Code Consultant
Holmes
600 1st Avenue, Suite 200A
Seattle, WA 98104

Fire Protection Engineer
Jensen Hughes
One Research Drive, Suite 305C
Westborough, MA 01581

Vertical Transportation Consultant
Larch Bates
19515 North Creek Parkway, Suite 304
Bothell, WA 98011

Structural Engineer
Magnusson Klemencic Associates
1301 5th Ave, Suite 3200
Seattle, WA 98101

Lighting Designer
O-
1319 SE MLK Blvd, Suite 210
Portland, Oregon 97219

Building Envelope Consultant
RDH
2101 N 34th St
Seattle, WA 98103

Accessibility Consultant
Studio Pacifica
2144 Westlake Ave N, Suite F
Seattle, WA 98109

MEP Engineer
WSP USA
1001 Fourth Ave., Suite 3100
Seattle, WA 98154

principal architect: JL
project manager: JCC
drawn by: CRB_SMM
checked by: Checker
job no. 2052
date 11/18/2022

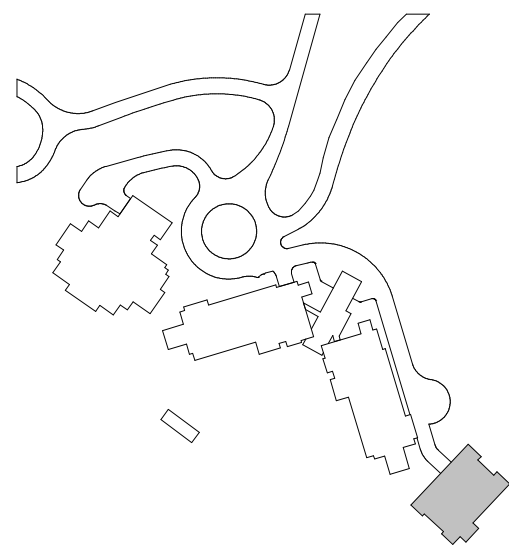
revisions:

no. date by

ISSUE FOR
CONSTRUCTION
11/18/2022

FIRE PROTECTION PLAN
- TOWER C - LEVEL 4

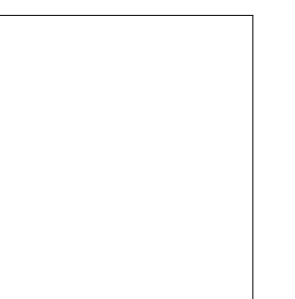
FP2.2C.14



1. SCOPE OF WORK INCLUDES SPRINKLER PROTECTION THROUGHOUT ALL AREAS IN ACCORDANCE WITH NFPA 13. SPRINKLERS ARE INDICATED IN HYDRAULIC CALCULATION REMOTE AREAS AND AREAS WITH FINISHED CEILINGS FOR COORDINATION PURPOSES. INSTALLING CONTRACTOR SHALL BE RESPONSIBLE FOR DETAILED DESIGN OF BRANCH PIPING AND UPRIGHT SPRINKLERS IN AREAS WITHOUT FINISHED CEILINGS.

Olson Kundig

SOMMET BLANC - C
DEER VALLEY, UTAH



MEP Engineer
WSP USA
1001 Fourth Ave., Suite 3100
Seattle, WA 98154

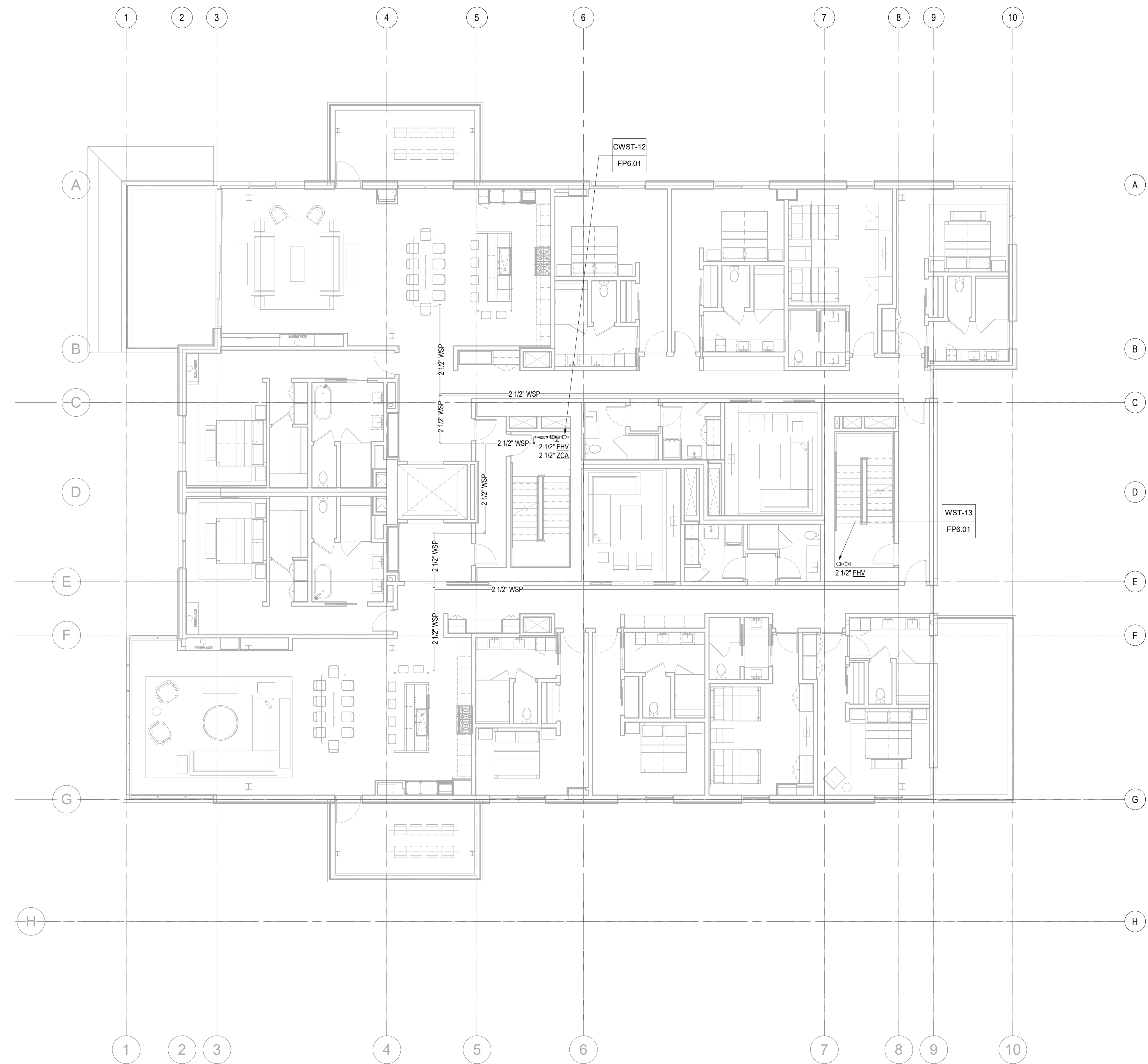
revisions:

no. date _____ by _____

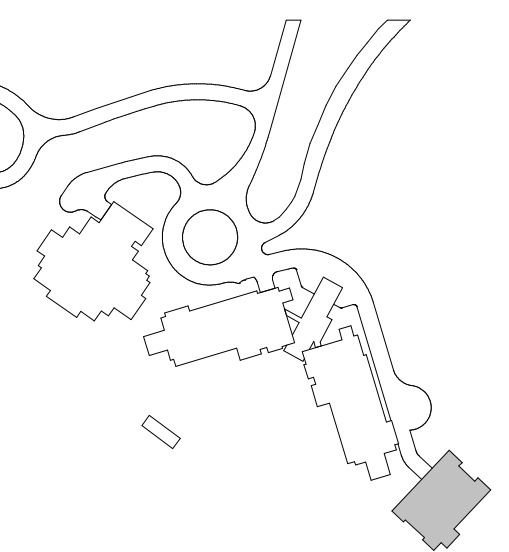
ISSUE FOR
CONSTRUCTION

11/18/2022

FP2.2C.15



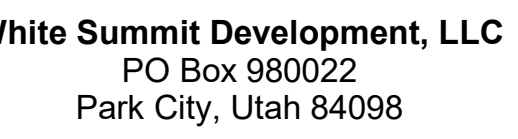
1 TOWER C - LEVEL 5 - FP
1/8" = 1'-0"



1. SCOPE OF WORK INCLUDES SPRINKLER PROTECTION THROUGHOUT ALL AREAS IN ACCORDANCE WITH NFPA 13. SPRINKLERS ARE INDICATED IN HYDRAULIC CALCULATION REMOTE AREAS AND AREAS WITH FINISHED CEILINGS FOR COORDINATION PURPOSES. INSTALLING CONTRACTOR SHALL BE RESPONSIBLE FOR DETAILED DESIGN OF BRANCH PIPING AND UPRIGHT SPRINKLERS IN AREAS WITHOUT FINISHED CEILINGS.

Seattle, Washington 98104 USA
+1 206 624 5670 olsonkundig.com

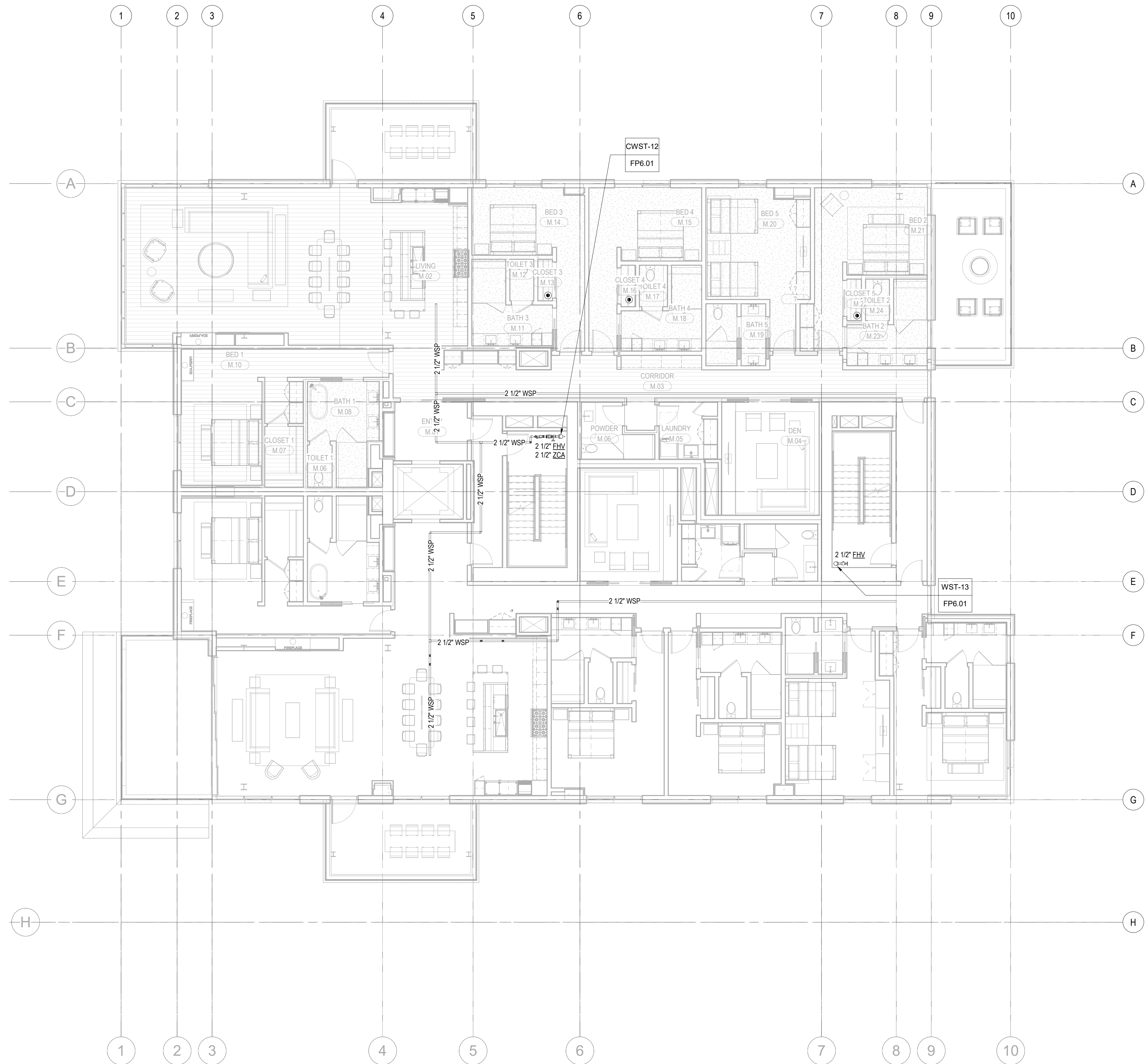
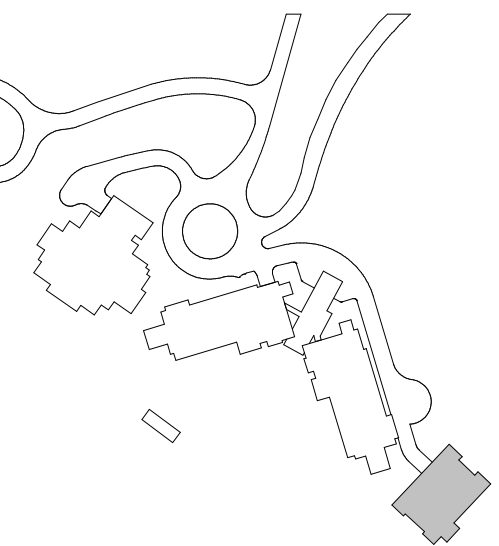
SOMMET BLANC - C
DEER VALLEY, UTAH



no. date _____ by _____

1/18/2022

FP2.2C.16

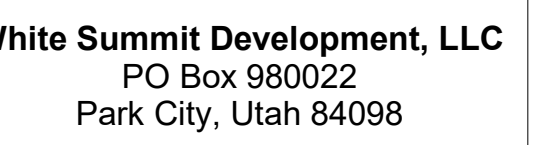


1 TOWER C - LEVEL 6 - FP
1/8" = 1'-0"

1. SCOPE OF WORK INCLUDES SPRINKLER PROTECTION THROUGHOUT ALL AREAS IN ACCORDANCE WITH NFPA 13. SPRINKLERS ARE INDICATED IN HYDRAULIC CALCULATION REMOTE AREAS AND AREAS WITH FINISHED CEILINGS FOR COORDINATION PURPOSES. INSTALLING CONTRACTOR SHALL BE RESPONSIBLE FOR DETAILED DESIGN OF BRANCH PIPING AND UPRIGHT SPRINKLERS IN AREAS WITHOUT FINISHED CEILINGS.

Olson Kundig

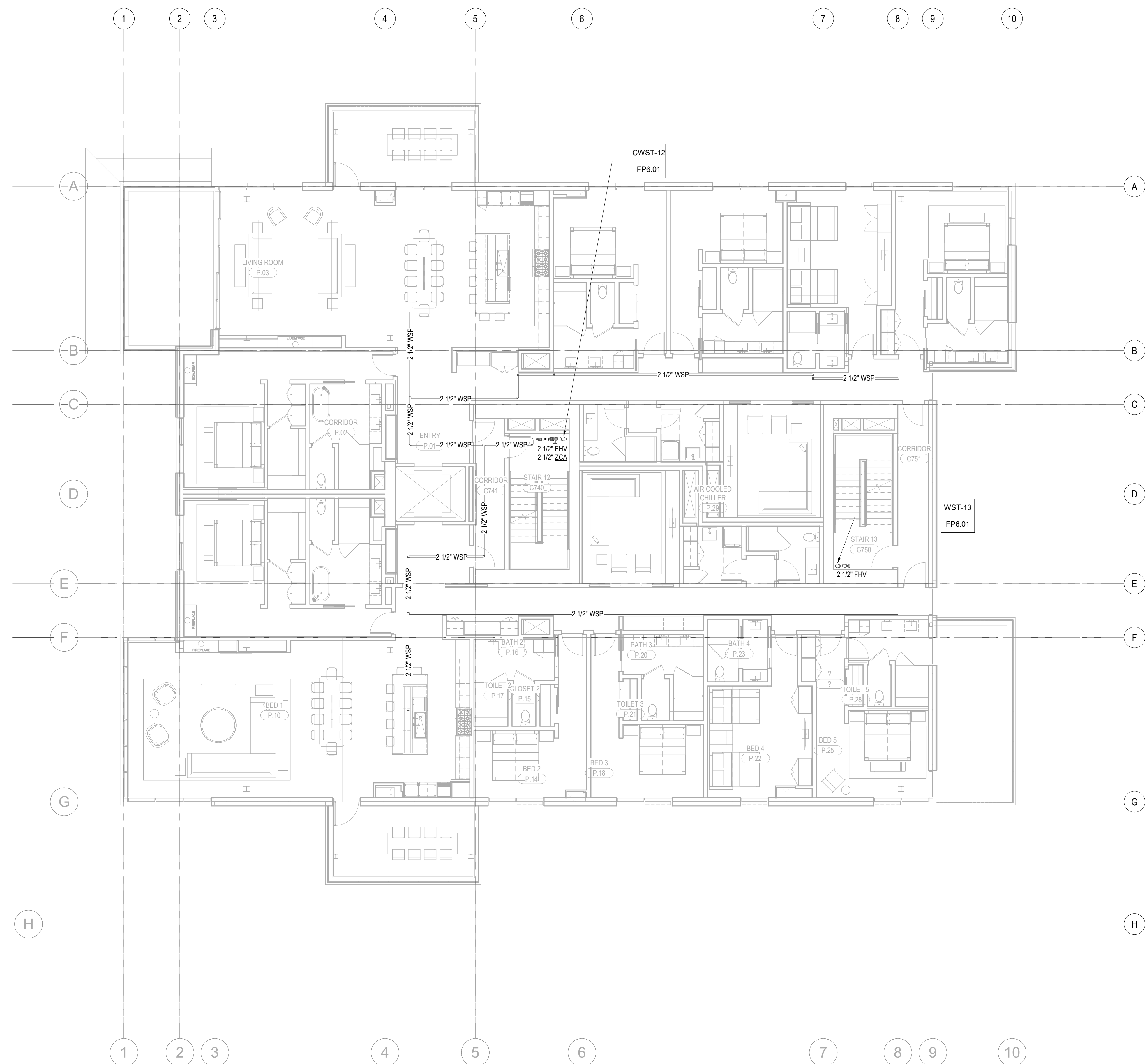
SOMMET BLANC - C
DEER VALLEY, UTAH



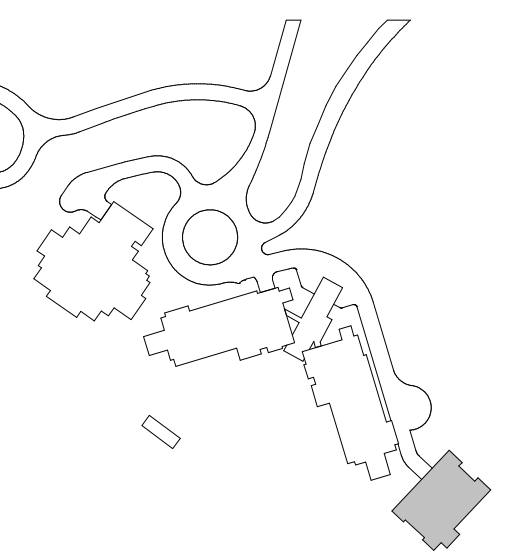
no. date by

1/18/2022

FP2.2C.17

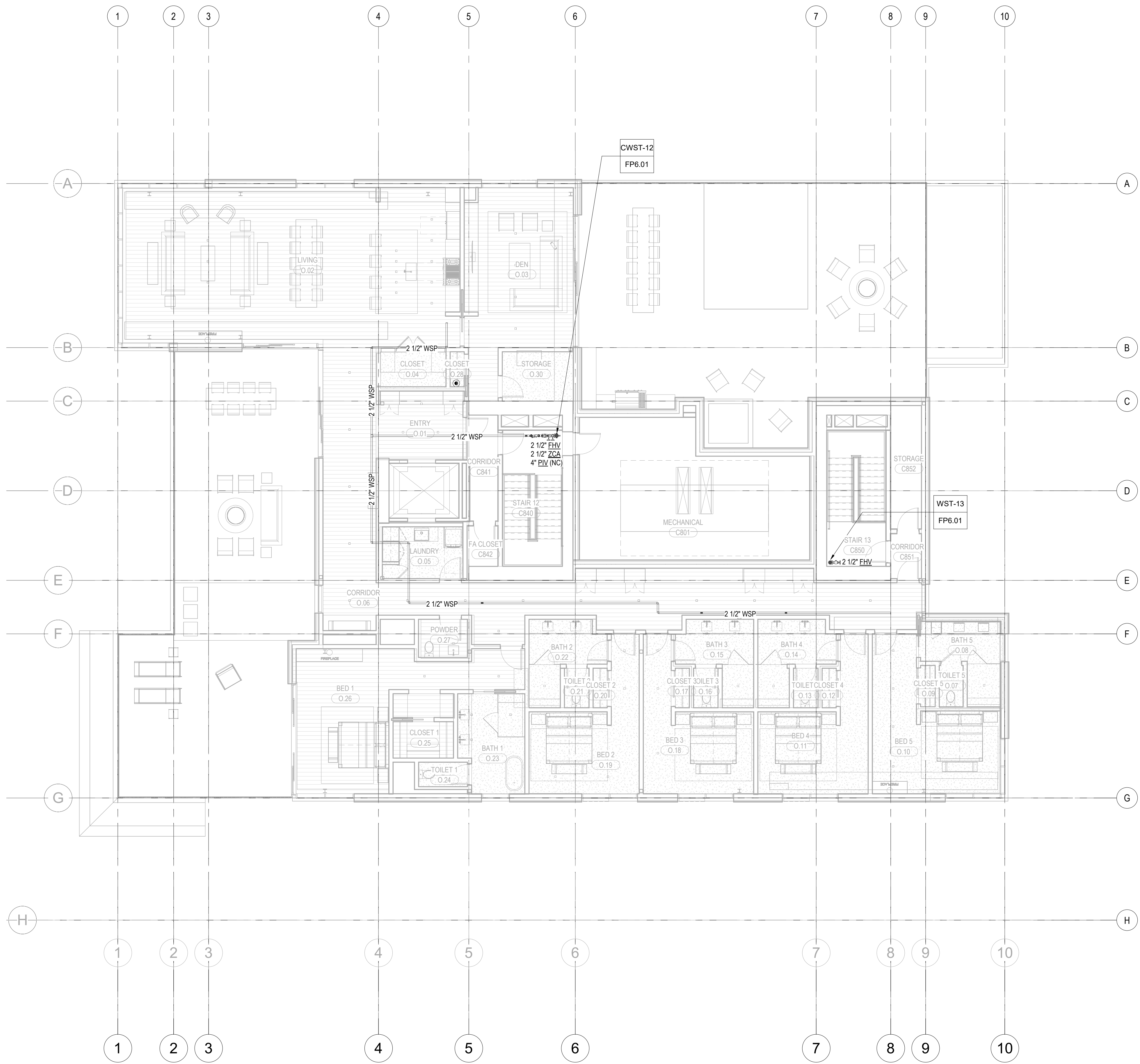


1 TOWER C - LEVEL 7 - FP
1/8" = 1'-0"

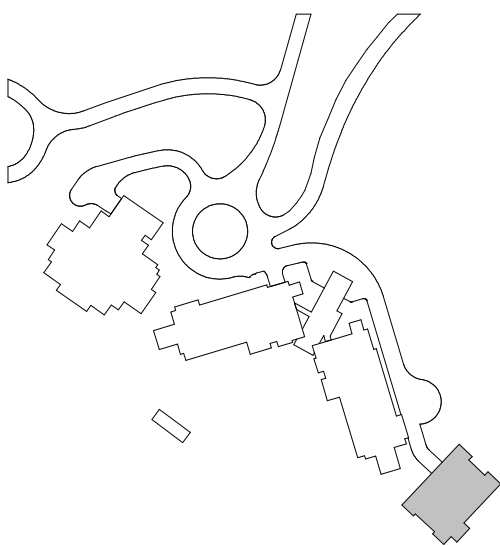


GENERAL NOTES:

1. SCOPE OF WORK INCLUDES SPRINKLER PROTECTION THROUGHOUT ALL AREAS IN ACCORDANCE WITH NFPA 13. SPRINKLERS ARE INDICATED IN HYDRAULIC CALCULATION. REMOTE AREAS AND AREAS WITH FINISHED CEILINGS FOR COORDINATION PURPOSES. INSTALLING CONTRACTOR SHALL BE RESPONSIBLE FOR DETAILED DESIGN OF BRANCH PIPING AND UPRIGHT SPRINKLERS IN AREAS WITHOUT FINISHED CEILINGS.



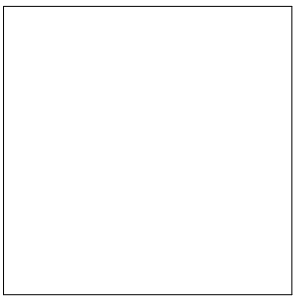
1 TOWER C - LEVEL 8 - FP
1/8" = 1'-0"



100 South Jackson St., Suite 600
Seattle, Washington 98104 USA
+1 206 834 2877 olsonkundig.com

Olson Kundig

project
SOMMET BLANC - C
DEER VALLEY, UTAH



White Summit Development, LLC
PO Box 980022
Park City, Utah 84098

Acoustic Consultant
BRC Acoustics
1932 1st Ave, Suite 620
Seattle, WA 98101

Pool Consultant
Cloward H2O
2696 N University Ave, Suite 290
Provo, UT 84604

Landscape Architect
EPG Design
6949 South High Tech Drive, Suite 100
Midvale, Utah 84047

Specifications Writer
Friday Group
86 Mainelli Road
Middlebury, VT

Code Consultant
Holmes
600 1st Avenue, Suite 200A
Seattle, WA 98104

Fire Protection Engineer
Jensen Hughes
One Research Drive, Suite 305C
Westborough, MA 01581

Vertical Transportation Consultant
Larch Bates
19515 North Creek Parkway, Suite 304
Bothell, WA 98011

Structural Engineer
Magnusson Klemencic Associates
1301 5th Ave, Suite 3200
Seattle, WA 98101

Lighting Designer
O
1319 SE MLK Blvd, Suite 210
Portland, Oregon 97219

Building Envelope Consultant
RDH
2101 N 34th St
Seattle, WA 98103

Accessibility Consultant
Studio Pacifica
2144 Westlake Ave N, Suite F
Seattle, WA 98109

MEP Engineer
WSP USA
1001 Fourth Ave., Suite 3100
Seattle, WA 98154

principal architect—TK
project manager—JC
drawn by—CRB, SMW
checked by—Checker
job no. 2052
date 11/18/2022

revisions:

no. date by

ISSUE FOR
CONSTRUCTION
11/18/2022

FIRE PROTECTION PLAN
- TOWER C - LEVEL 8

FP2.2C.18

1. SCOPE OF WORK INCLUDES SPRINKLER PROTECTION THROUGHOUT ALL AREAS IN ACCORDANCE WITH NFPA 13. SPRINKLERS ARE INDICATED IN HYDRAULIC CALCULATION REMOTE AREAS AND AREAS WITH FINISHED CEILINGS FOR COORDINATION PURPOSES. INSTALLING CONTRACTOR SHALL BE RESPONSIBLE FOR DETAILED DESIGN OF BRANCH PIPING AND UPRIGHT SPRINKLERS IN AREAS WITHOUT FINISHED CEILINGS.

Olson Kundig

SOMMET BLANC - C
DEER VALLEY, UTAH

Acoustic Consultant
BRC Acoustics
1932 1st Ave, Suite 620
Seattle, WA 98101

Pool Consultant
Cloward H2O
2696 N University Ave, Suite 290
Provo, UT 84604

EPG Design
8949 South High Tech Drive, Suite 100
Midvale, Utah 84047

Specifications Writer
Friday Group
88 Mainelli Road
Middlebury, VT

Code Consultant
Holmes
600 1st Avenue, Suite 200A
Seattle, WA 98104

Fire Protection Engineer
Jensen Hughes
One Research Drive, Suite 305C
Westborough, MA 01581

Vertical Transportation Consultant
Lerch Bates
19515 North Creek Parkway, Suite 304
Bothell, WA 98011

Structural Engineer
Magnusson Klemencic Associates
1301 5th Ave, Suite 3200
Seattle, WA 98101

Lighting Designer
O-
1319 SE MLK Blvd, Suite 210
Portland, Oregon 97219

Building Envelope Consultant
RDH
2101 N 34th St
Seattle, WA 98103

Accessibility Consultant
Studio Pacifica
2144 Westlake Ave N, Suite F
Seattle, WA 98109

MEP Engineer
WSP USA
1001 Fourth Ave., Suite 3100
Seattle, WA 98154

principal architect TK
project manager JCC
drawn by CRB, SMK
checked by Checker
job no. 20052
date 11/18/2022

revisions:

no. date _____ by _____

ISSUE FOR
CONSTRUCTION
11/18/2022

FIRE PROTECTION PLAN
TOWER C - ROOF
LEVEL

FP2.2C.R

1 TOWER C - ROOF - FP
1/8" = 1'-0"

