

109 South Jackson St. Suite 600
Seattle, Washington 98104 USA
+1 206 424 8810 olsonkunding.com

Olson Kundig
SOMMET BLANC
9300 MARSSAC AVE
PARK CITY, UT 84060

ASPEN GROUP
Aspen Group USA, LLC
PO Box 980022
Park City, Utah 84098

Pool Consultant
Cloward H2O
2696 N University Ave., Suite 250
Provo, UT 84604

Landscape Architect
EPG Design
6949 South High Tech Drive, Suite 100
Midvale, Utah 84047

Specifications Writer
Friday Group
88 Mainelli Road
Middlebury, VT

Code Consultant
Holmes
600 1st Avenue, Suite 200A
Seattle, WA 98104

Fire Protection Engineer
Jensen Hughes
One Research Drive, Suite 305C
Westborough, MA 01581

Vertical Transportation Consultant
Larch Bates
19515 North Creek Parkway, Suite 304
Bothell, WA 98011

Structural Engineer
Magnusson Klemencic Associates
1301 5th Ave., Suite 3200
Seattle, WA 98101

Lighting Designer
O
1319 SE MLK Blvd., Suite 210
Portland, Oregon 97219

Building Envelope Consultant
RDH
2101 N 34th St
Seattle, WA 98103

Accessibility Consultant
Studio Pacifica
2144 Westlake Ave N, Suite F
Seattle, WA 98109

MEP Engineer
WSP USA
1001 Fourth Ave., Suite 3100
Seattle, WA 98154

principal architect TK, KM
project manager TM, JB, LS, MD
drawn by SK, SS, JR, CP, AL
NH, EK, BD, ER

checked by Checker
job no. 2052
date 11/18/2022

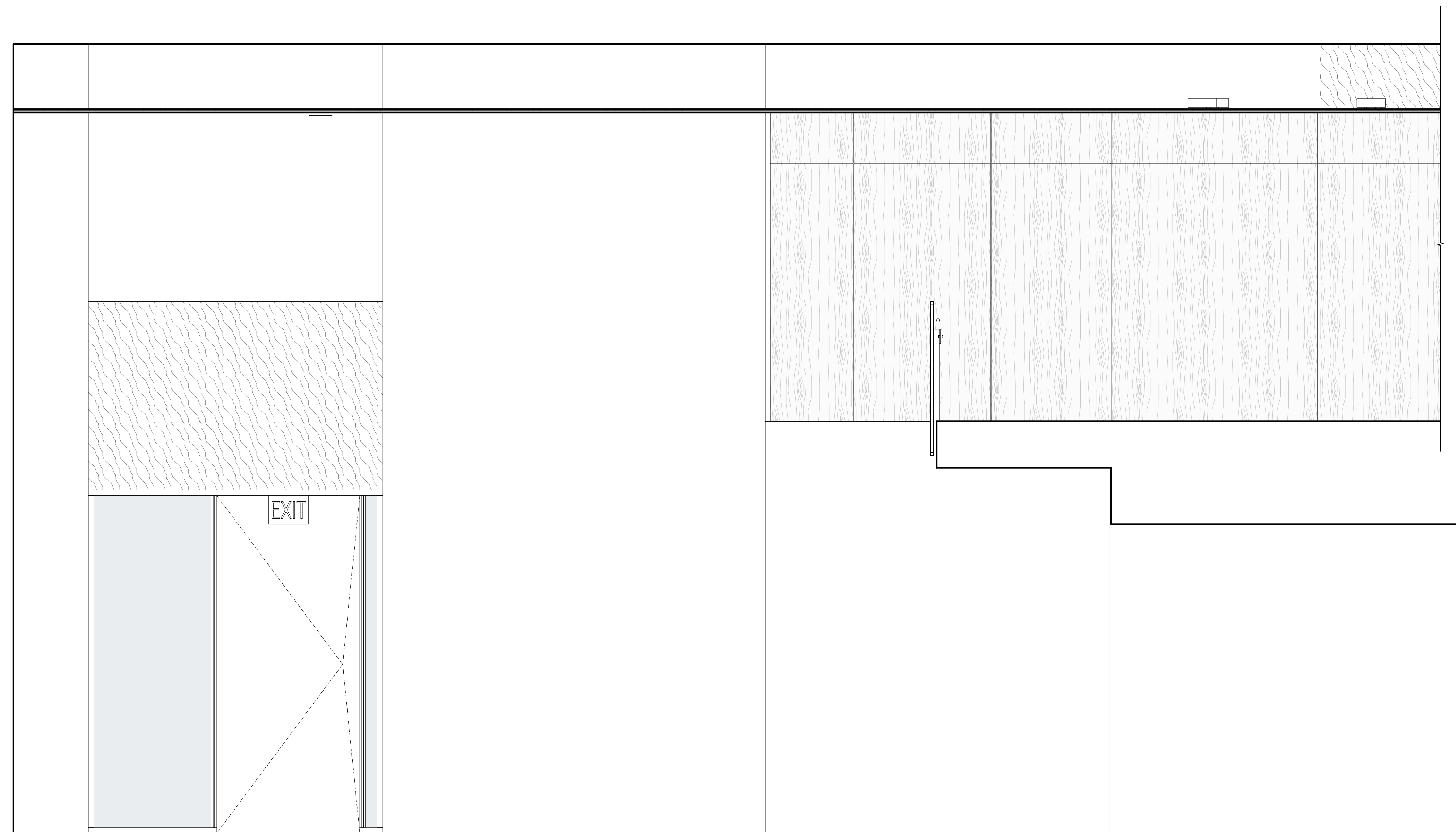
revisions:

no. date by

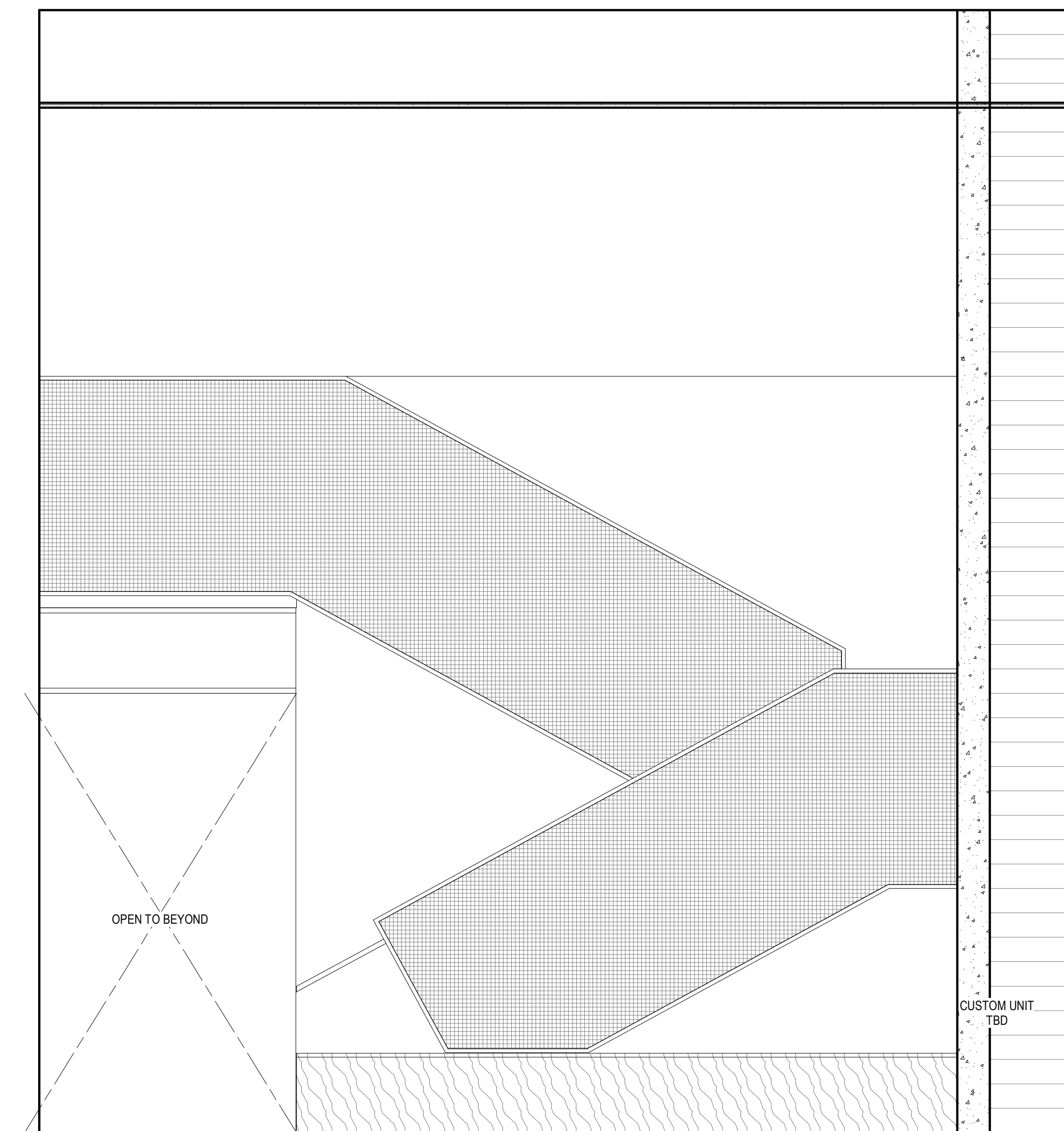
ISSUED FOR
CONSTRUCTION
11/18/2022

INTERIOR ELEVATIONS -
TOWER C - ENTRY
LOBBY

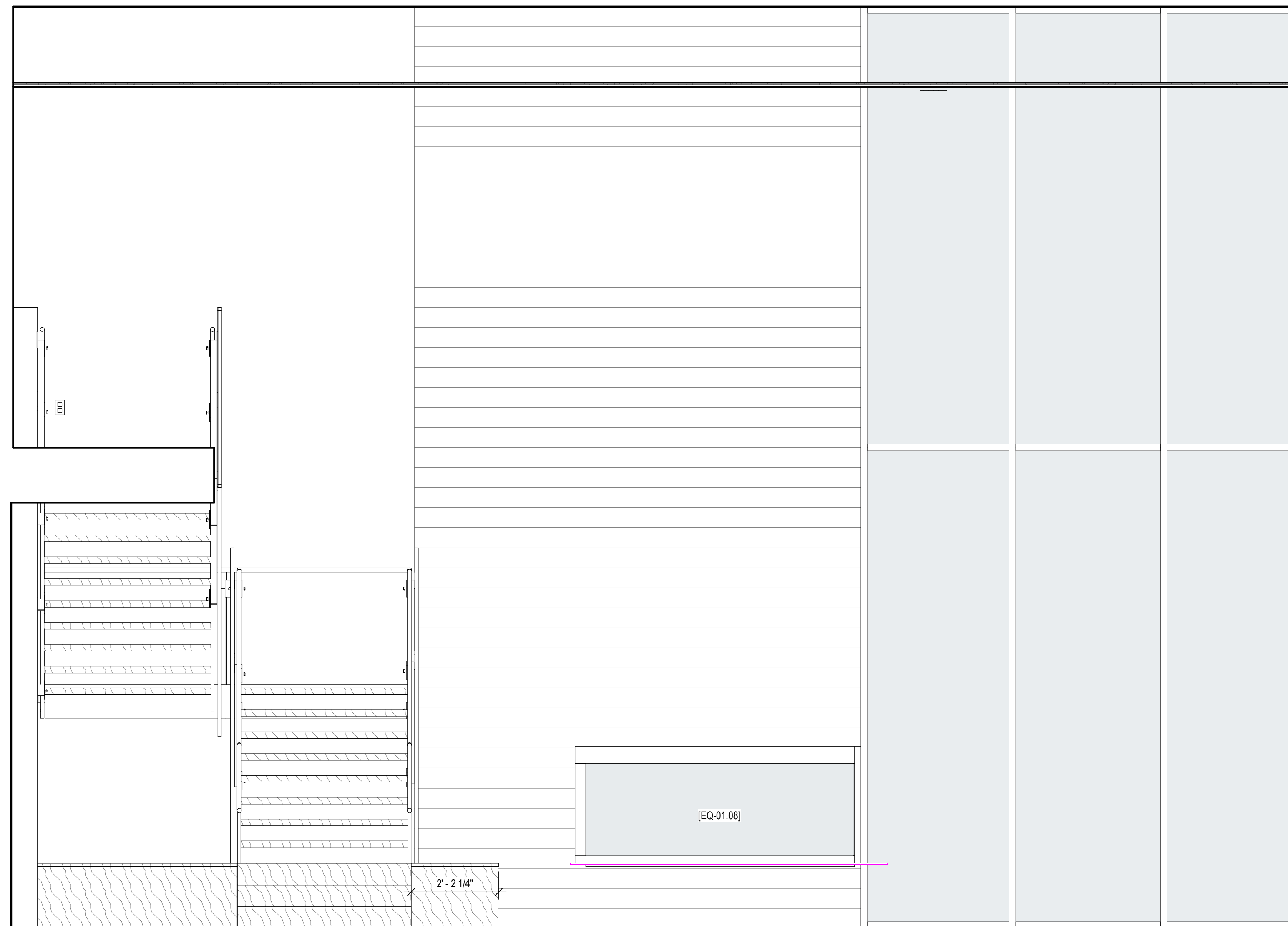
A5.1C.01



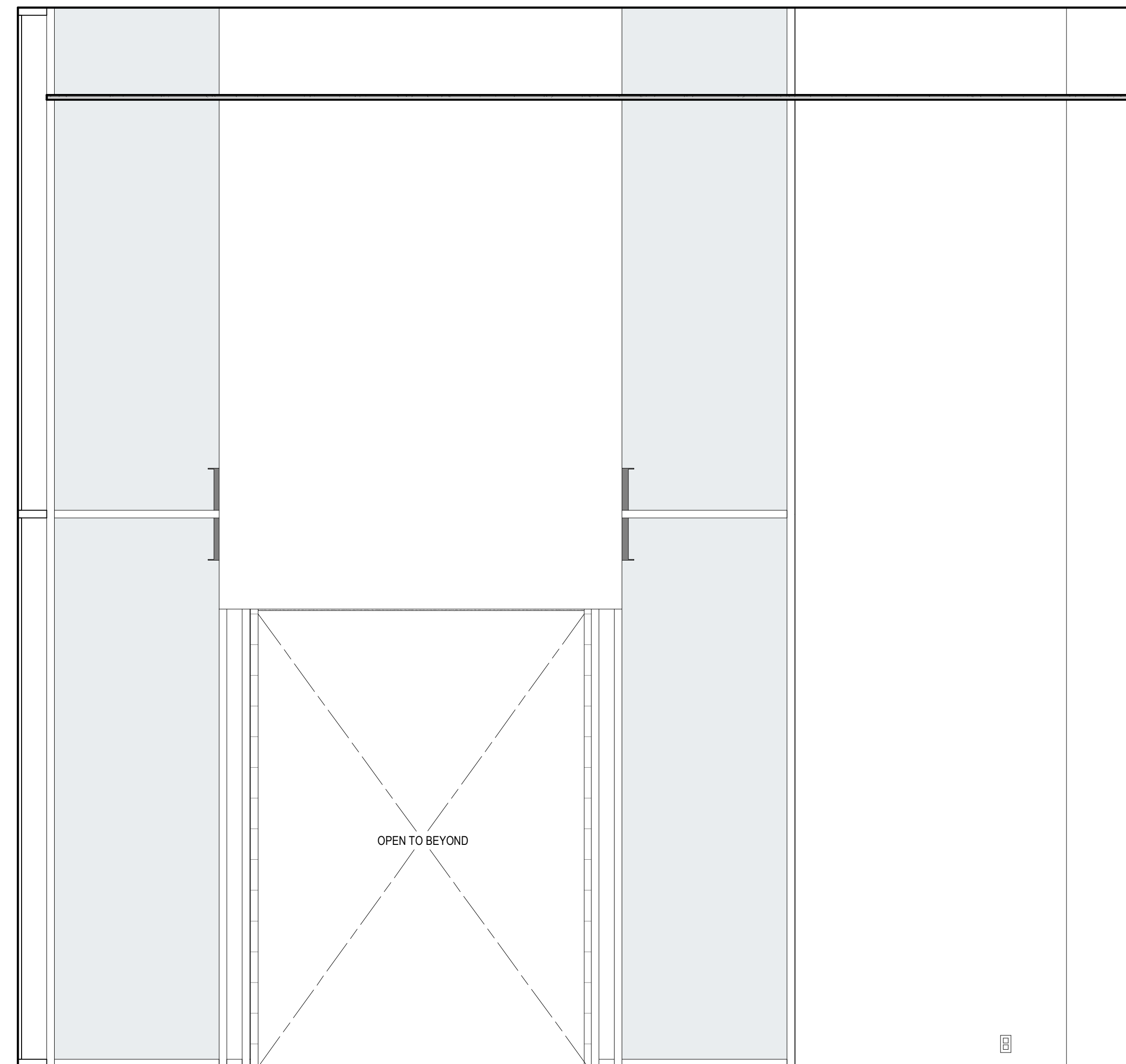
1 ENTRY LOBBY - D
SCALE: 1/2" = 1'-0"



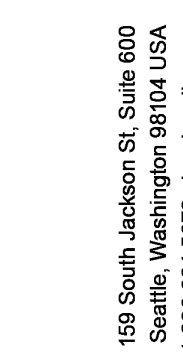
4 ENTRY LOBBY - C
SCALE: 1/2" = 1'-0"



3 ENTRY LOBBY - B
SCALE: 1/2" = 1'-0"

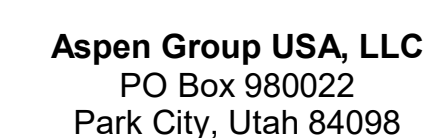


2 ENTRY LOBBY - A
SCALE: 1/2" = 1'-0"



Olson Kundig

SOMMET BLANC
9300 MARSAC AVE
PARK CITY, UT 84060



Pool Consultant
Cloward H2O
2696 N University Ave, Suite 290
Provo, UT 84604

Landscape Architect
EPG Design
6949 South High Tech Drive, Suite 100
Midvale, Utah 84047

Specifications Write
Friday Group
88 Mainelli Road
Middlebury, VT

Code Consultant
Holmes
600 1st Avenue, Suite 200A
Seattle, WA 98104

Fire Protection Engineer
Jensen Hughes
One Research Drive, Suite 305C
Westborough, MA 01581

Vertical Transportation Consultant
Lerch Bates
19515 North Creek Parkway, Suite 300
Bothell, WA 98011

Structural Engineer
Magnusson Klemencic Associates
1301 5th Ave, Suite 3200
Seattle, WA 98101

Lighting Designer
O-
1319 SE MLK Blvd, Suite 210
Portland, Oregon 97219

Building Envelope Consultants
RDH
2101 N 34th St
Seattle, WA 98103

Accessibility Consultant
Studio Pacifica
2144 Westlake Ave N, Suite 1
Seattle, WA 98109

MEP Engineer
WSP USA
1001 Fourth Ave., Suite 3100
Seattle, WA 98154

principal architect TK, KM
project manager TM, JB, LB, MD
drawn by SK, SS, JR, CP, AL
NH, EK, BD, EB

checked by Checker
job no. 20062
date 11/18/2022

revisions

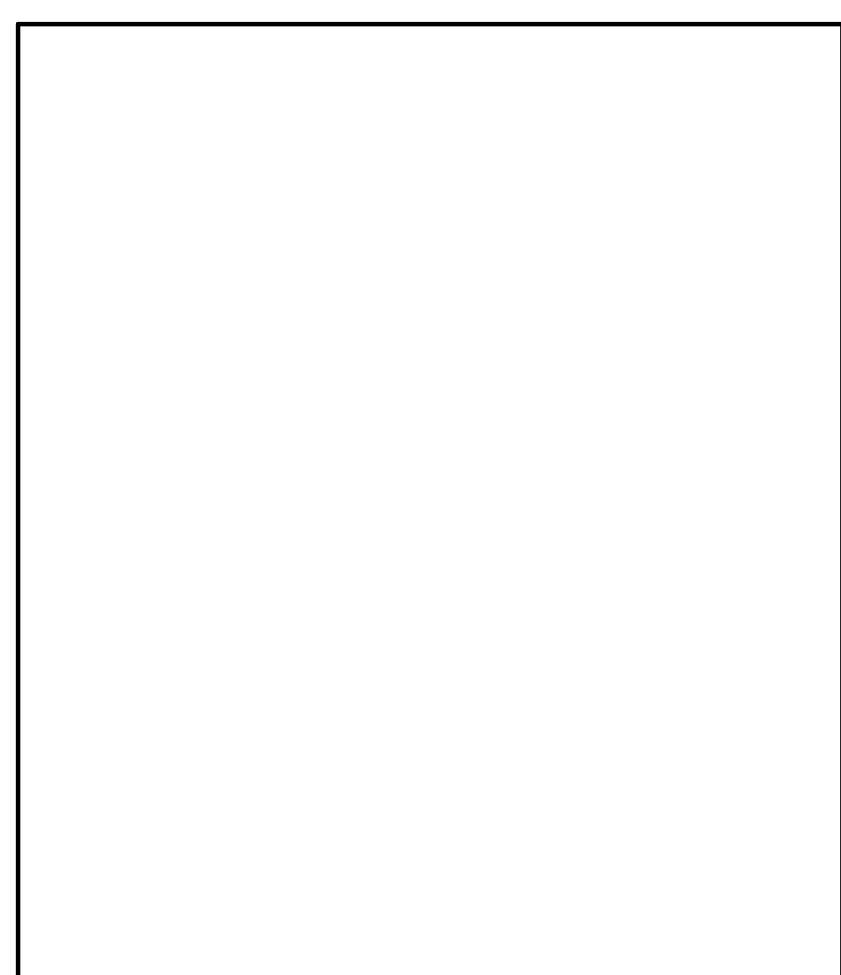
[illegible]

no.	date	by
-----	------	----

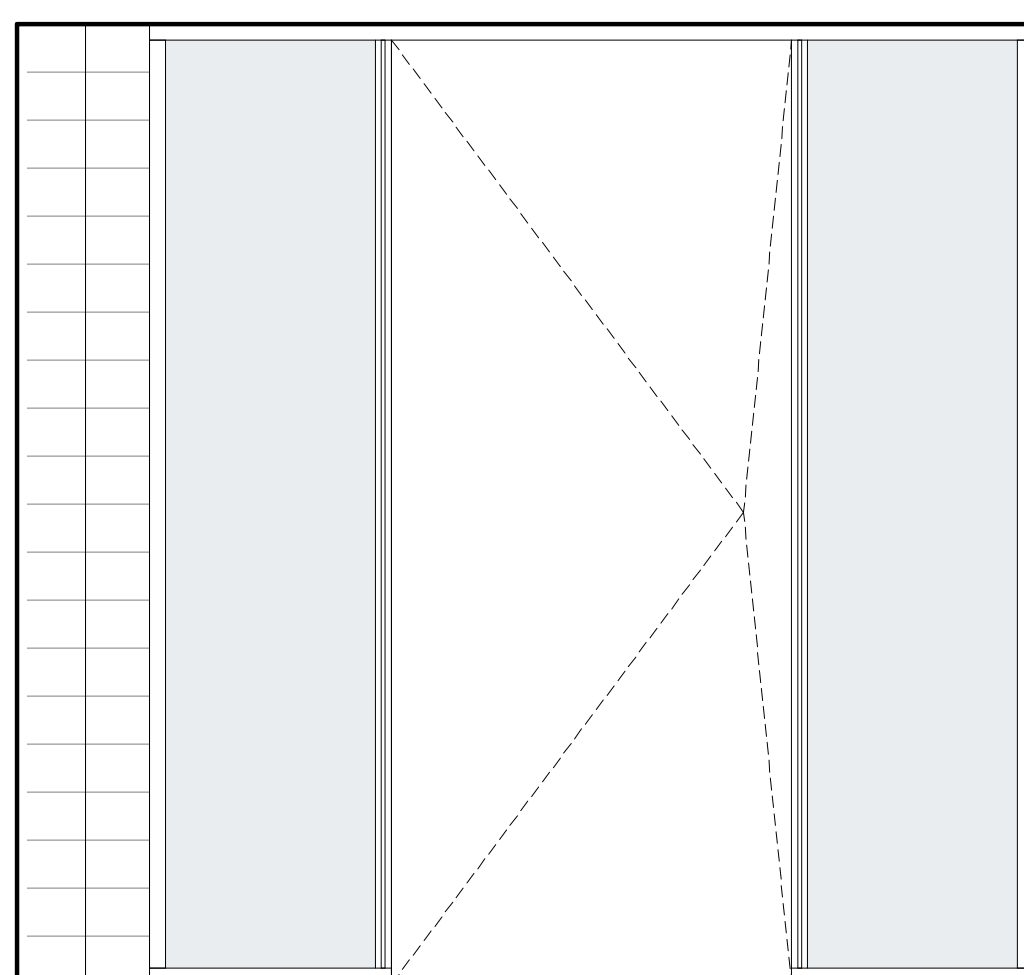
ISSUED FOR
CONSTRUCTION
11/18/2022

INTERIOR ELEVATIONS -
TOWER C - VESTIBULE

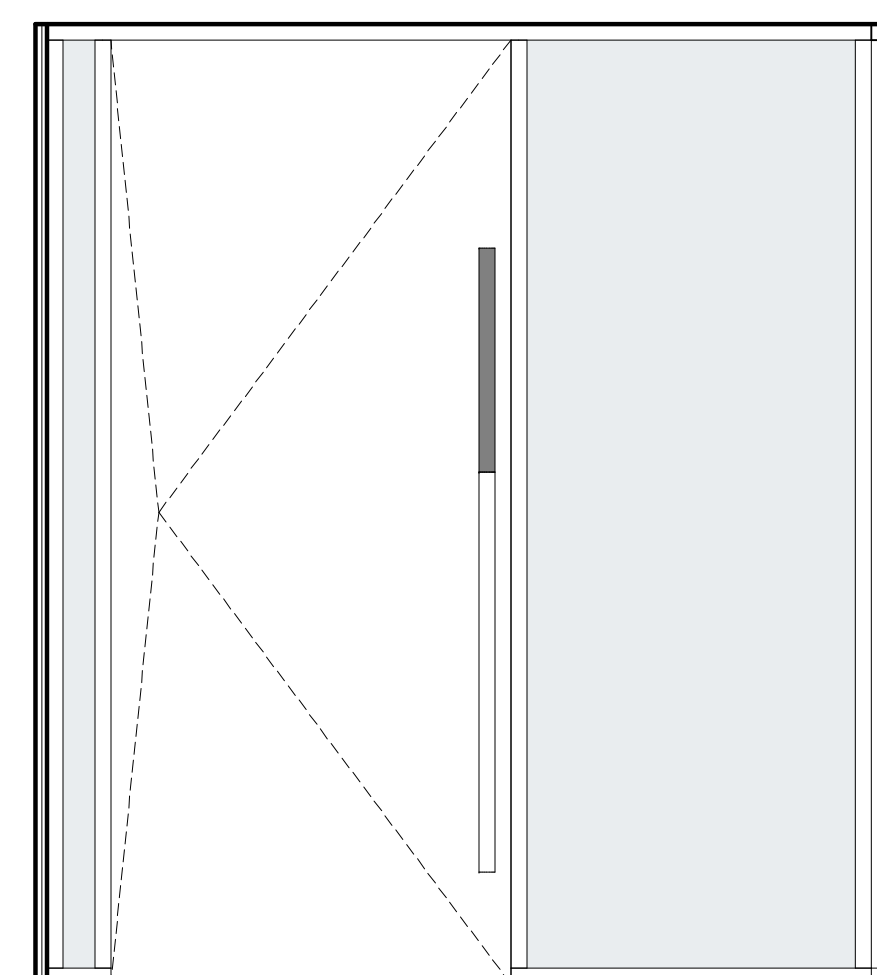
A5.1C.02



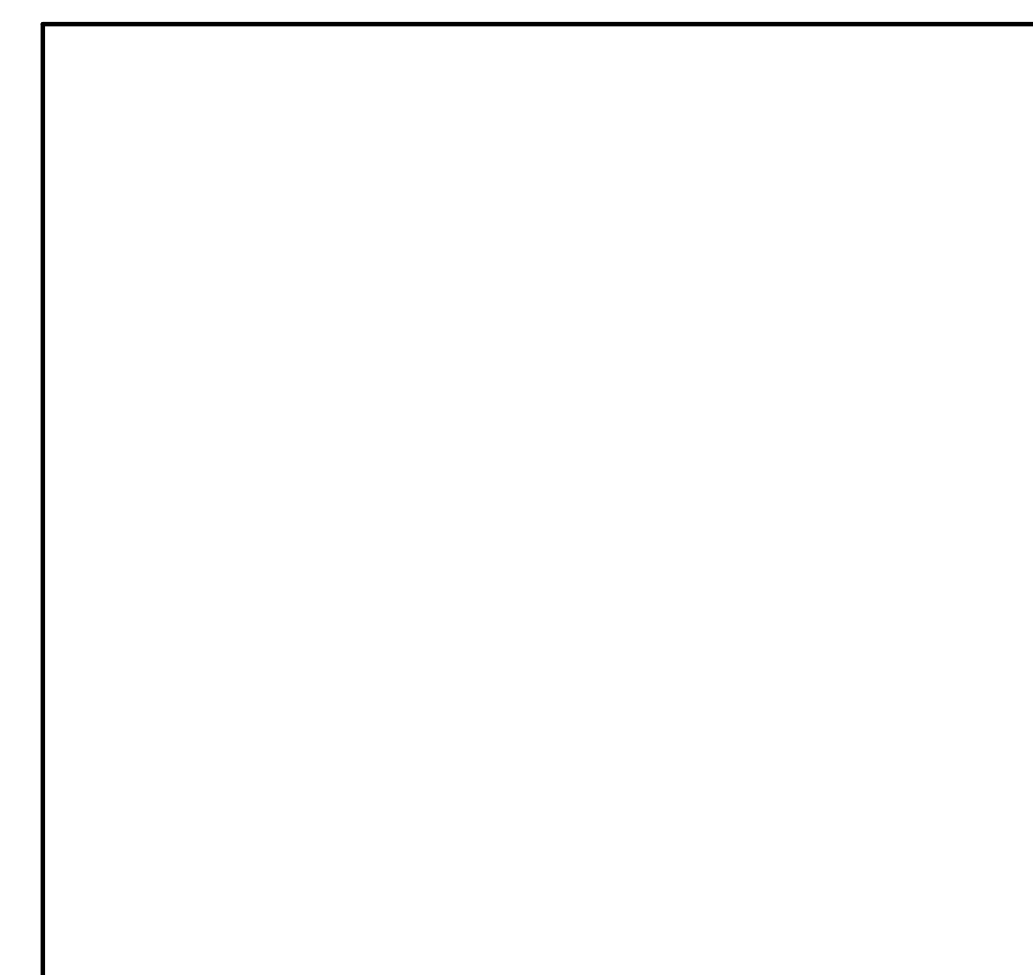
4 VESTIBULE - D
SCALE: 1/2" = 1'-0"



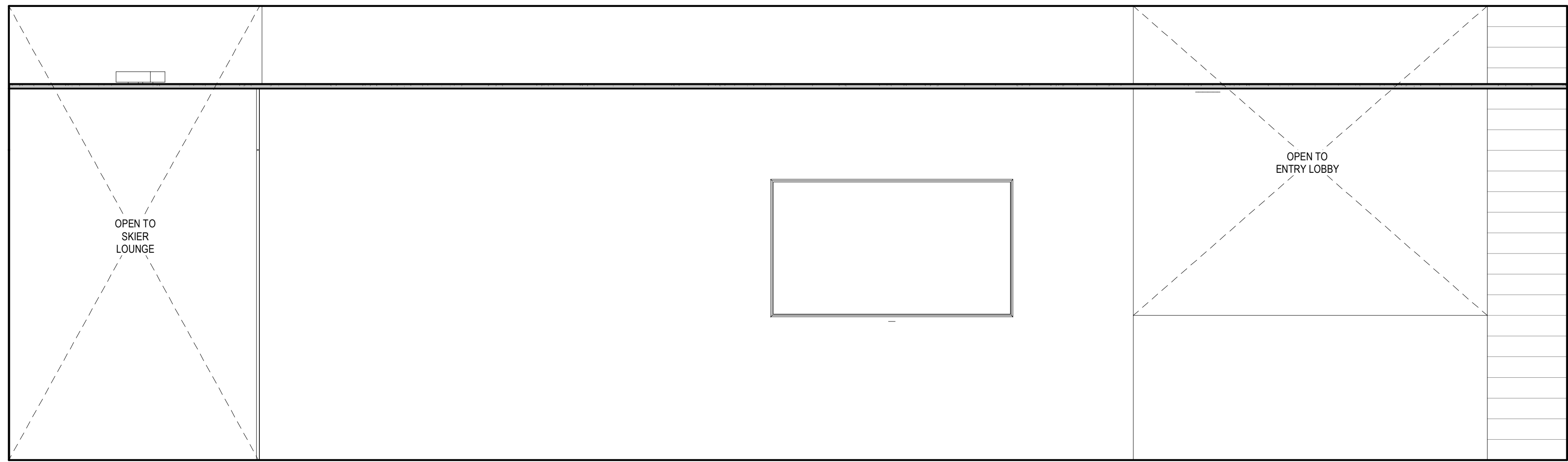
3 VESTIBULE - C
SCALE: 1/2" = 1'-0"



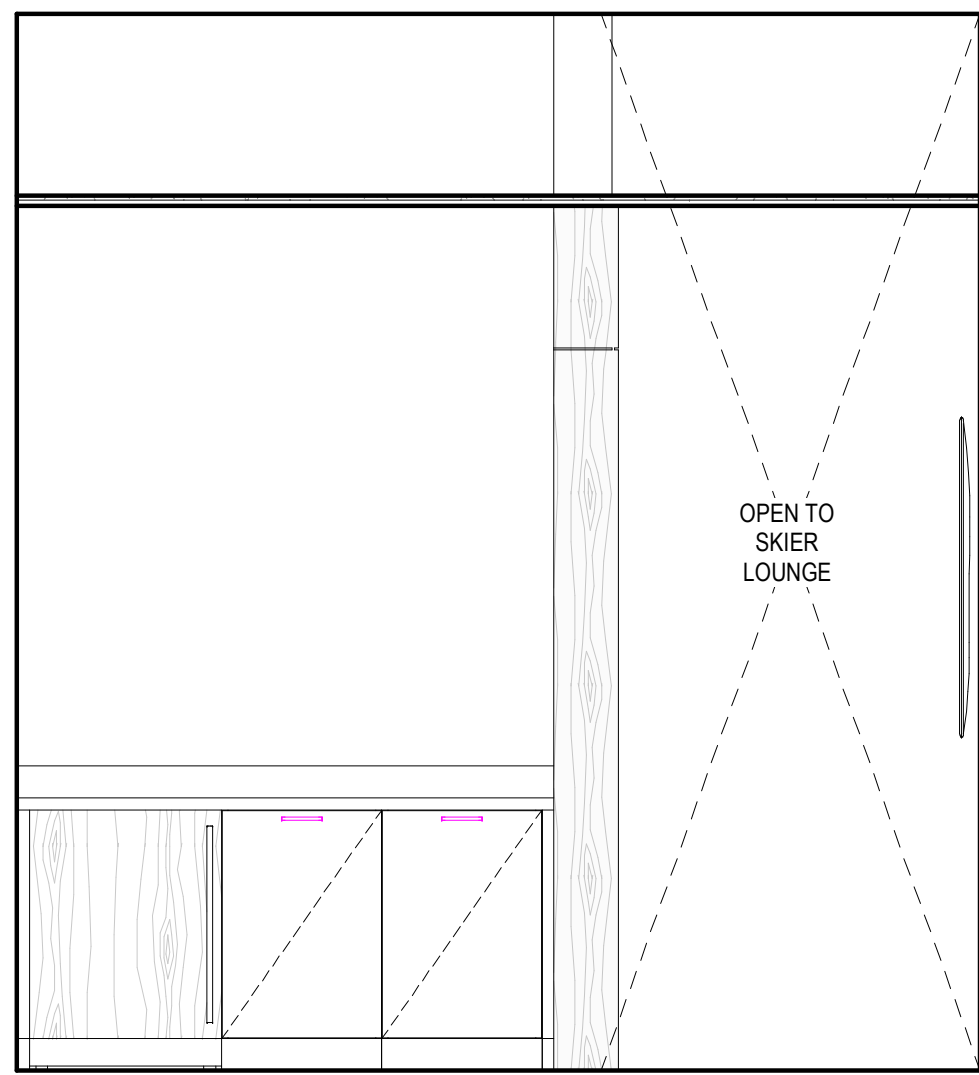
2 VESTIBULE - B
SCALE: 1/2" = 1'-0"



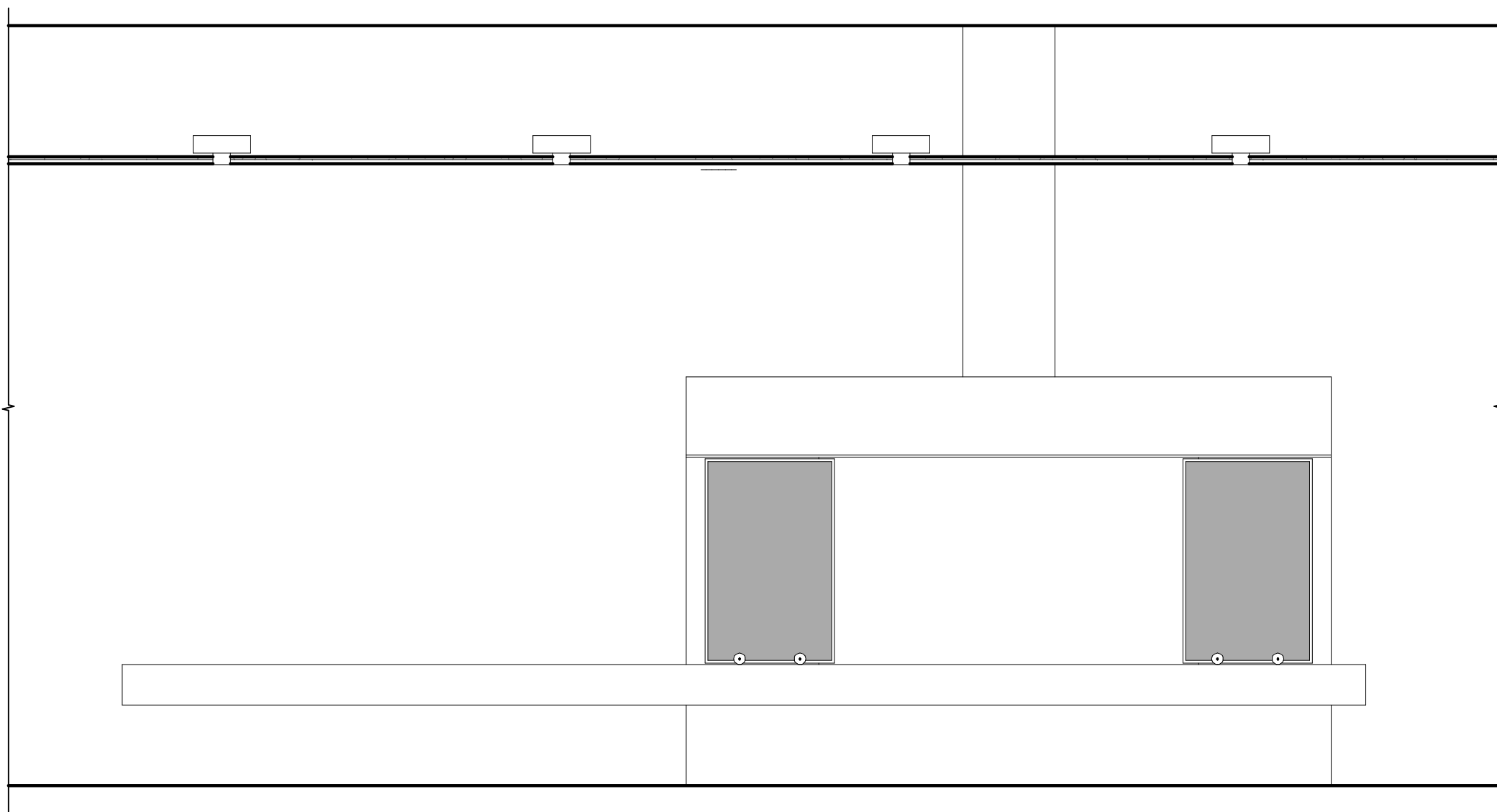
1 VESTIBULE - A
SCALE: 1/2" = 1'-0"



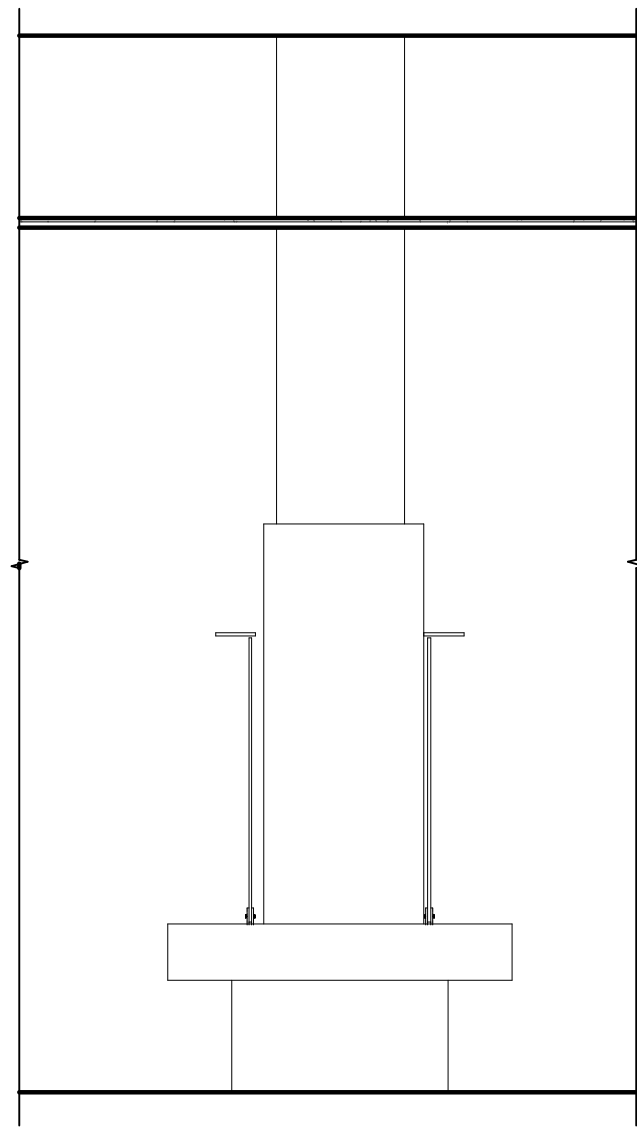
10 GUEST BUSINESS CENTER, C101B - B
SCALE: 1/2" = 1'-0"



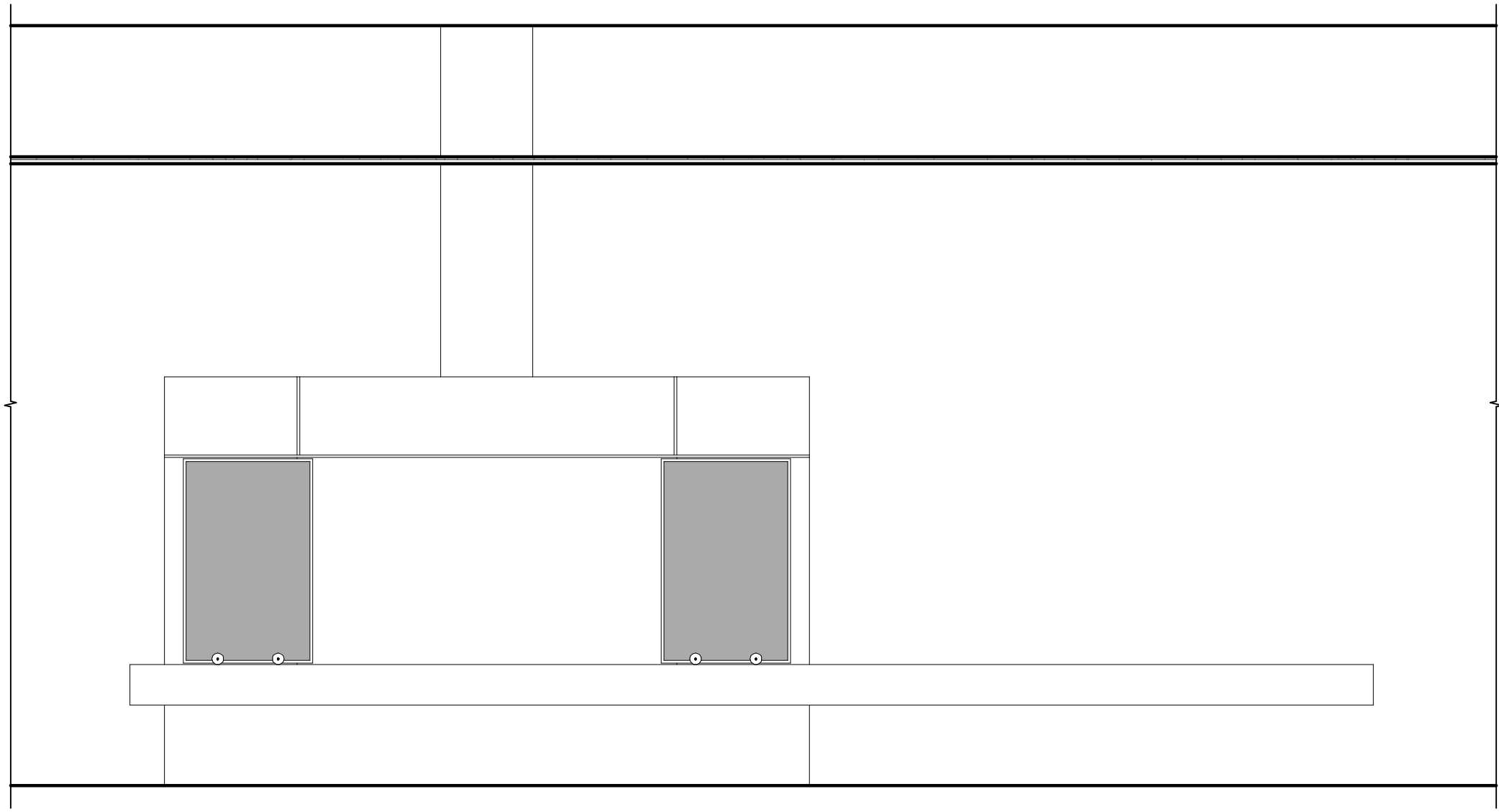
9 GUEST BUSINESS CENTER, C101B - A
SCALE: 1/2" = 1'-0"



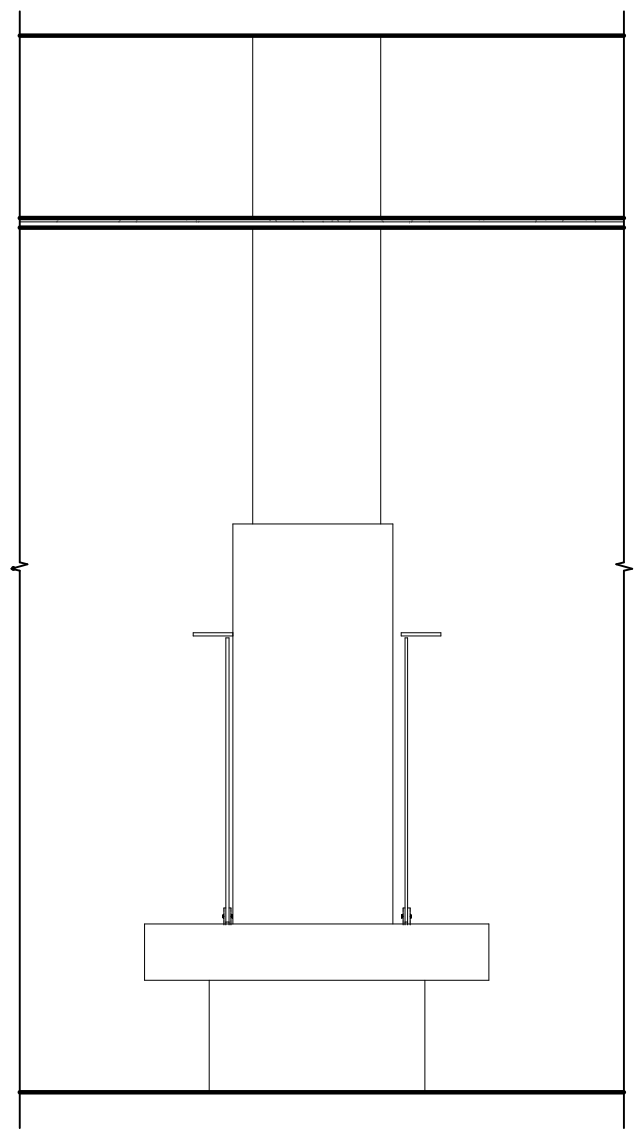
8 SKIER LOUNGE FP, C101 - D
SCALE: 1/2" = 1'-0"



7 SKIER LOUNGE FP, C101 - C
SCALE: 1/2" = 1'-0"



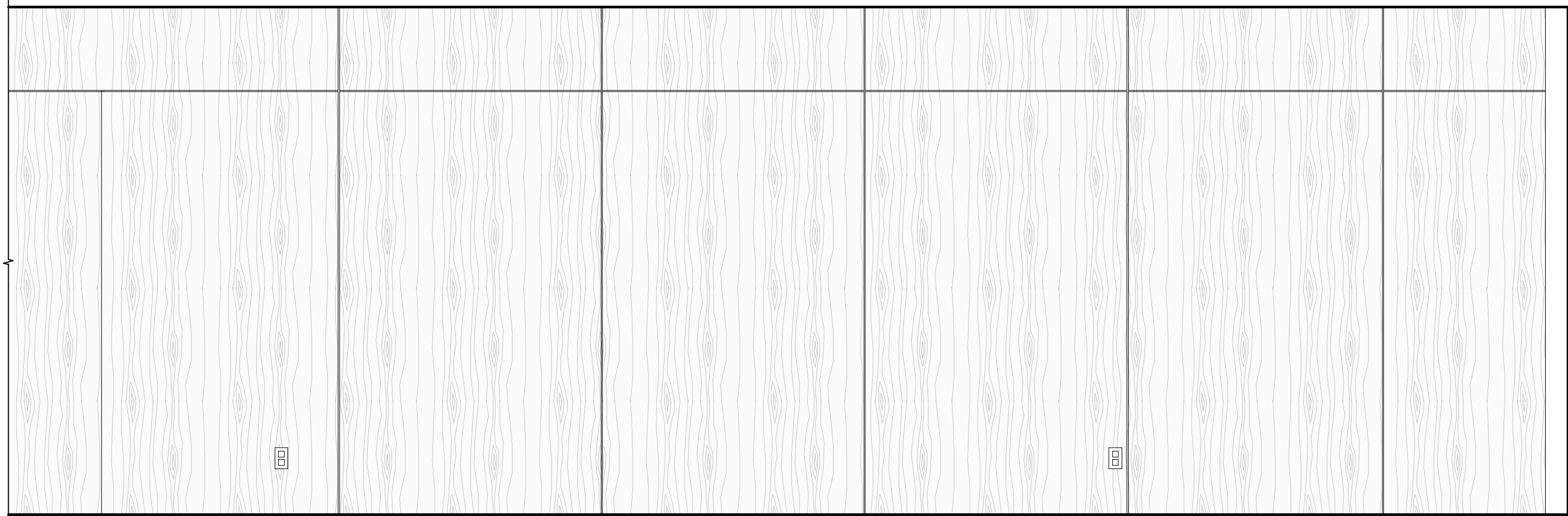
6 SKIER LOUNGE FP, C101 - B
SCALE: 1/2" = 1'-0"



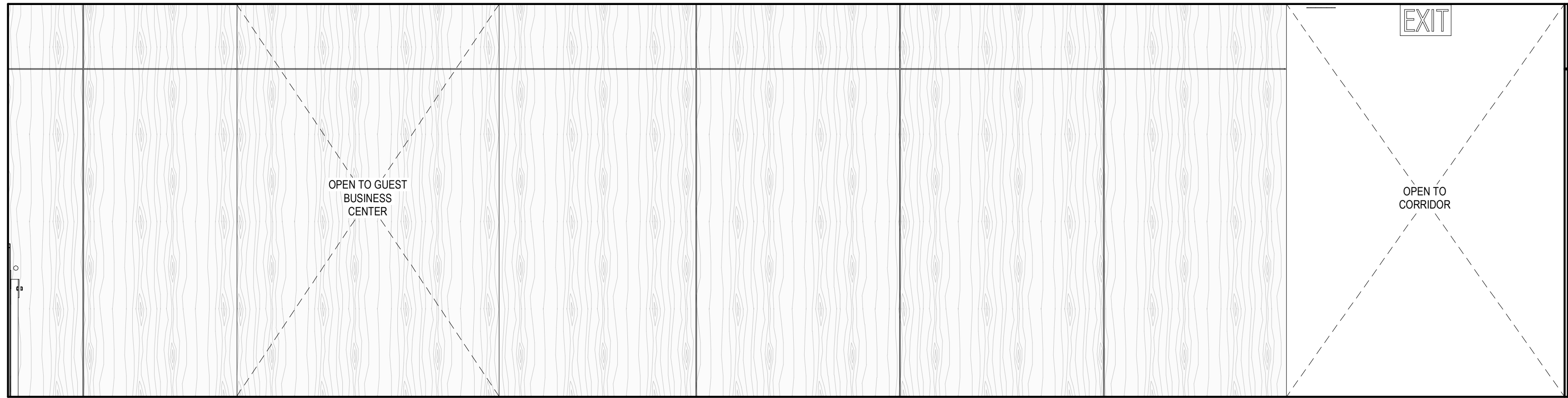
5 SKIER LOUNGE FP, C101 - A
SCALE: 1/2" = 1'-0"



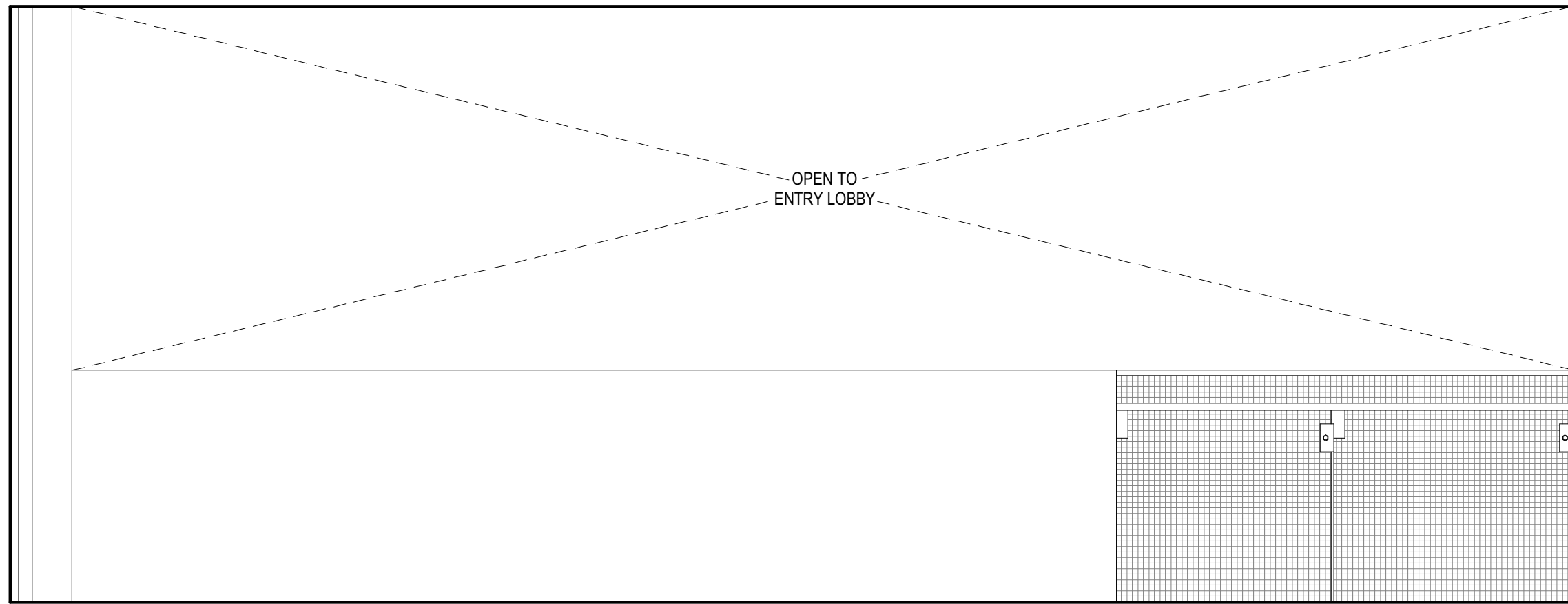
4 SKIER LOUNGE, C101 - D
SCALE: 1/2" = 1'-0"



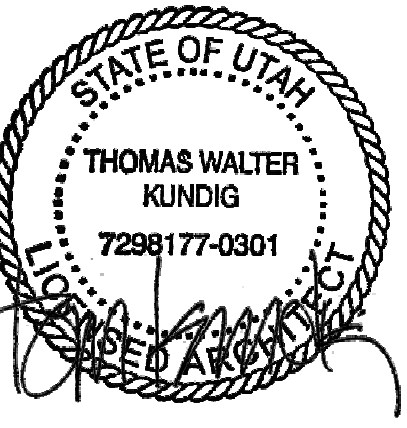
3 SKIER LOUNGE, C101 - C
SCALE: 1/2" = 1'-0"



2 SKIER LOUNGE, C101 - B
SCALE: 1/2" = 1'-0"



1 SKIER LOUNGE, C101 - A
SCALE: 1/2" = 1'-0"



109 South Jackson S. Suite 600
Seattle, Washington 98104 USA
+1 206 454 9810 oolsonkundig.com

Olson Kundig

SOMMET BLANC
8300 MARSA CAYE
PARK CITY, UT 84060



Aspen Group USA, LLC
PO Box 980022
Park City, Utah 84098

Pool Consultant
Howard H2O
2696 N University Ave, Suite 250
Provo, UT 84604

Landscape Architect
EPG Design
6949 South High Tech Drive, Suite 100
Midvale, Utah 84047

Specifications Writer
Friday Group
88 Mainelli Road
Middlebury, VT

Code Consultant
Holmes
600 1st Avenue, Suite 200A
Seattle, WA 98104

Fire Protection Engineer
Jensen Hughes
One Research Drive, Suite 305C
Westborough, MA 01581

Vertical Transportation Consultant
Larch Bates
1915 North Creek Parkway, Suite 304
Bothell, WA 98011

Structural Engineer
Magnusson Klemencic Associates
1301 5th Ave, Suite 3200
Seattle, WA 98101

Lighting Designer
O
319 SE MLK Blvd, Suite 210
Portland, Oregon 97219

Building Envelope Consultant
RDH
2101 N 34th St
Seattle, WA 98103

Accessibility Consultant
Studio Pacifica
2144 Westlake Ave N, Suite F
Seattle, WA 98109

MEP Engineer
WSP USA
1001 Fourth Ave., Suite 3100
Seattle, WA 98154

principal architect: TK, KM
project manager: TM, JB, LS, MD
drawn by: SK, SS, JR, CP, AL
checked by: NH, EK, BD, ER

checked by: Checker
job no. 2052
date 11/18/2022

revisions:

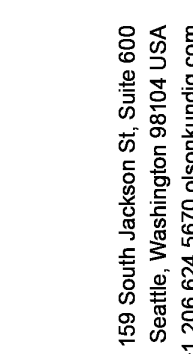
no. date by

ISSUED FOR
CONSTRUCTION

11/18/2022

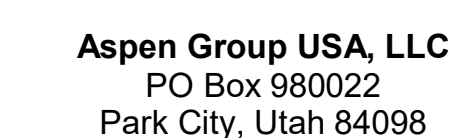
INTERIOR ELEVATIONS -
TOWER C - SKIER
LOUNGE

A5.1C.03



Olson Kundia

SOMMET BLANC
9300 MARSAC AVE
PARK CITY, UT 84060



Pool Consultant
Cloward H2O
2696 N University Ave, Suite 290
Provo, UT 84604

Landscape Architect
EPG Design
6949 South High Tech Drive, Suite 100
Midvale, Utah 84047

Specifications Write
Friday Group
88 Mainelli Road
Middlebury, VT

Code Consultant
Holmes
600 1st Avenue, Suite 200A
Seattle, WA 98104

Fire Protection Engineer
Jensen Hughes
One Research Drive, Suite 305C
Westborough, MA 01581

Vertical Transportation Consultant
Lerch Bates
19515 North Creek Parkway, Suite 304
Bothell, WA 98011

Structural Engineer
Magnusson Klemencic Associates
1301 5th Ave, Suite 3200
Seattle, WA 98101

Lighting Designer
O.
1319 SE MLK Blvd, Suite 210
Portland, Oregon 97219

Building Envelope Consultants
RDH
2101 N 34th St
Seattle, WA 98103

Accessibility Consultant
Studio Pacifica
2144 Westlake Ave N, Suite 1
Seattle, WA 98109

MEP Engineer
WSP USA
1001 Fourth Ave., Suite 3100
Seattle, WA 98154

principal architect TK, KM
project manager TM, JB, LB, MD
drawn by SK, SS, JR, CP, AL
NH, EK, BD, EB

checked by Checker
job no. 20062
date 11/18/2022

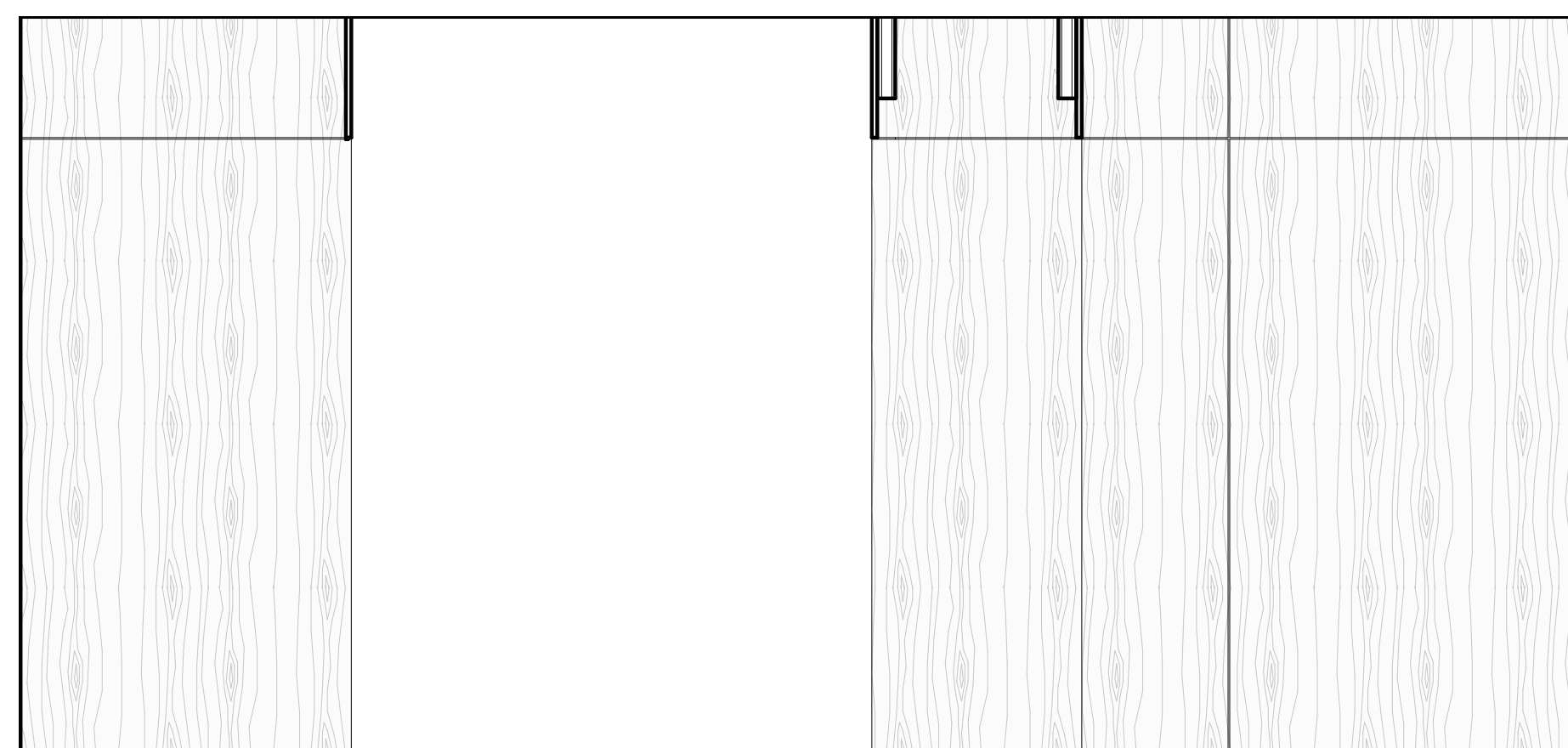
revisions

no.	date	t
-----	------	---

ISSUED FOR
CONSTRUCTION
11/18/2022

INTERIOR ELEVATIONS -
TOWER C - SKIER
LOUNGE

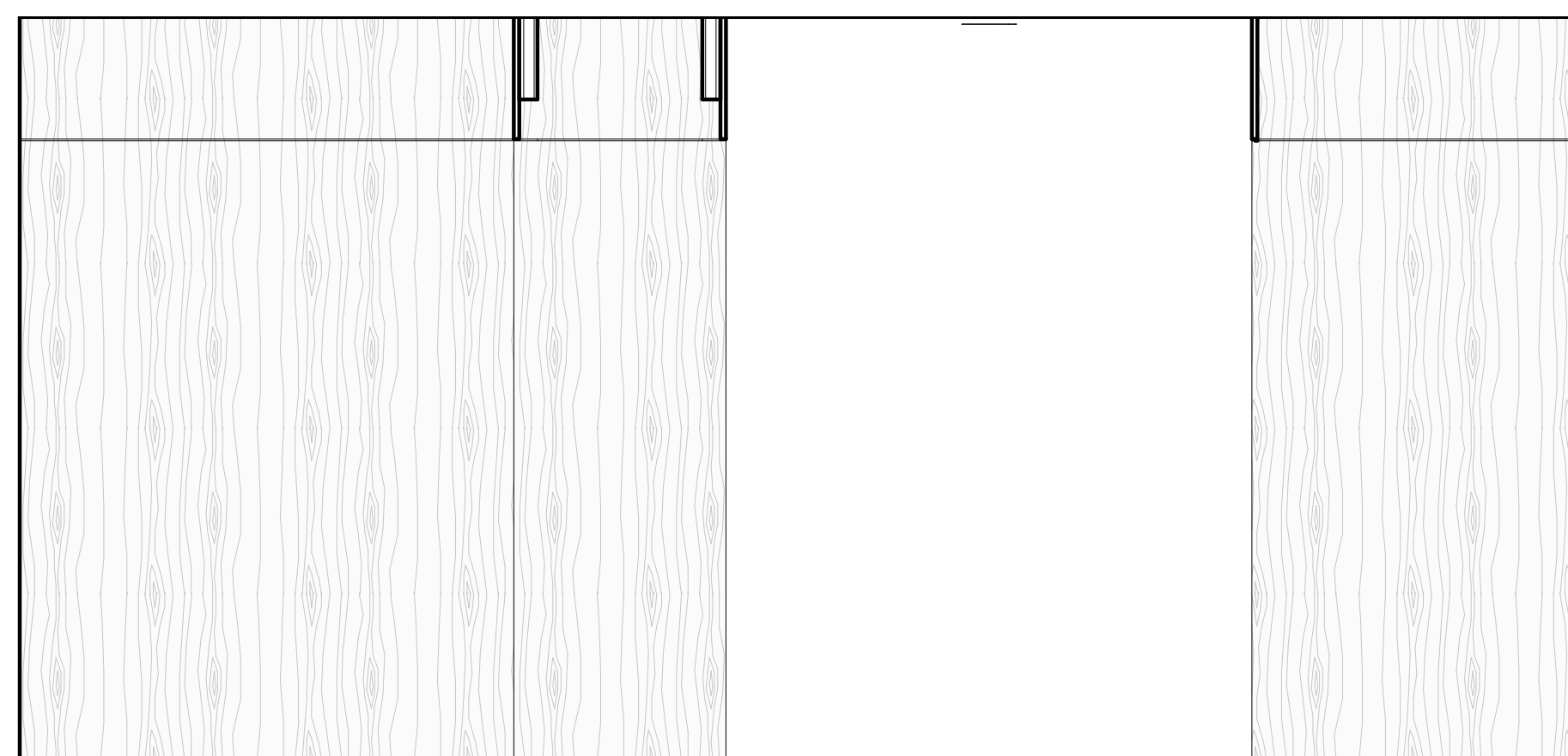
A5.1C.04



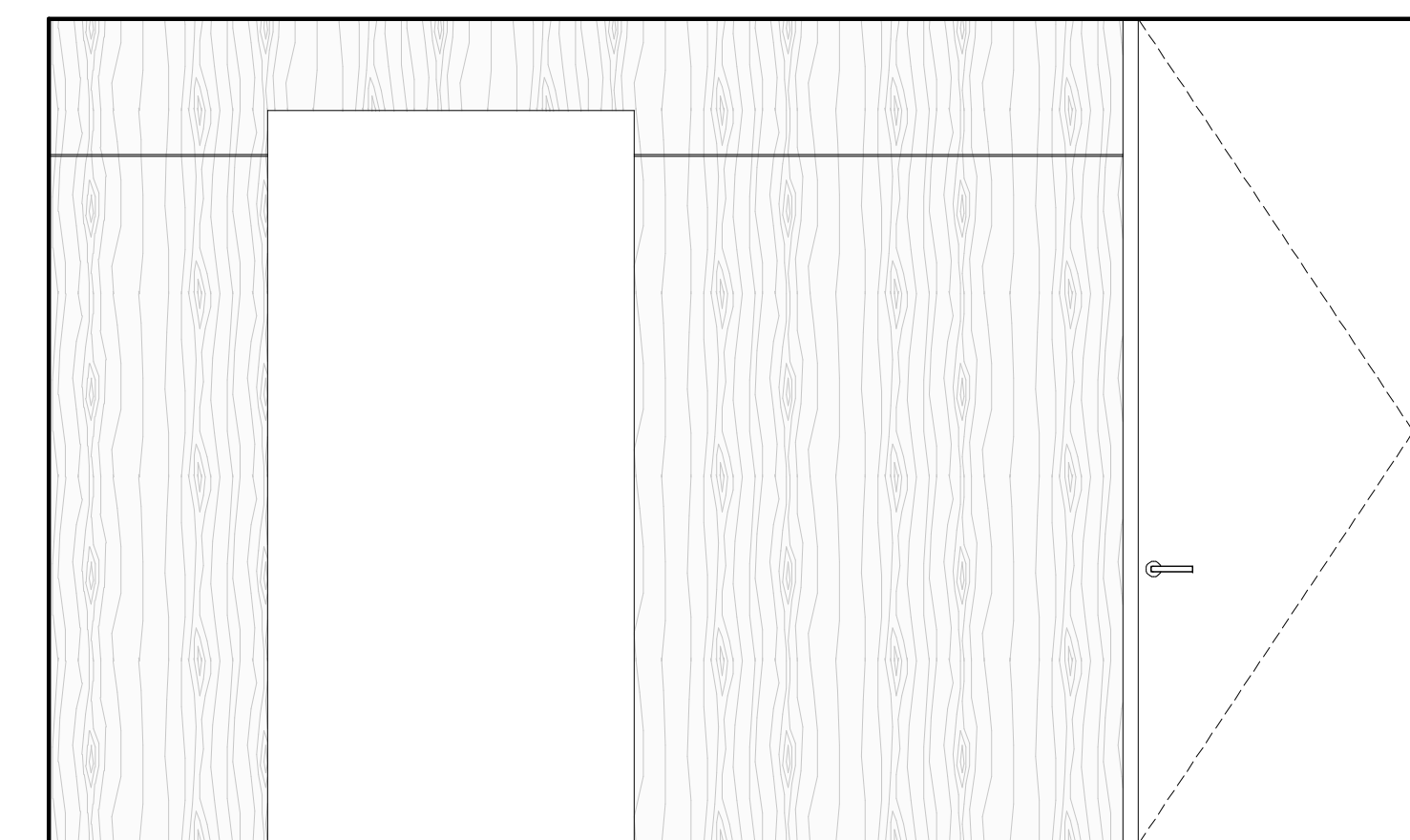
6 ELEV T5 VESTIBULE - D
SCALE: 1/2" = 1'-0"



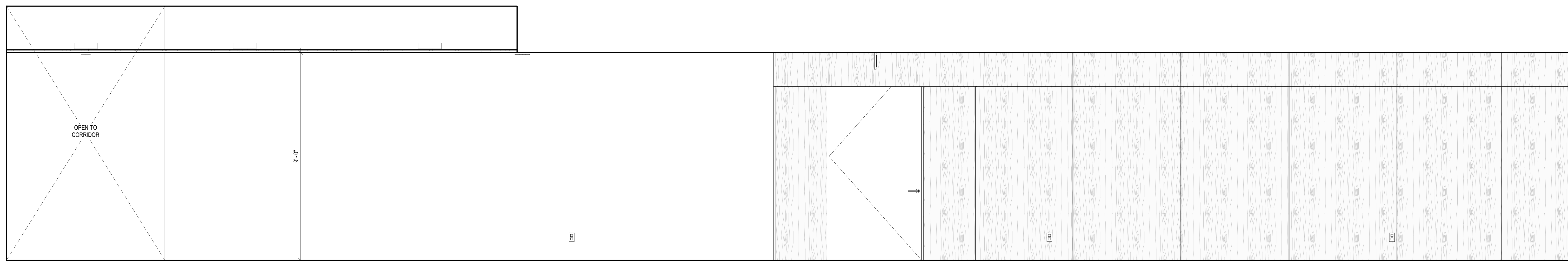
5 ELEV T5 VESTIBULE - C
SCALE: 1/2" = 1'-0"



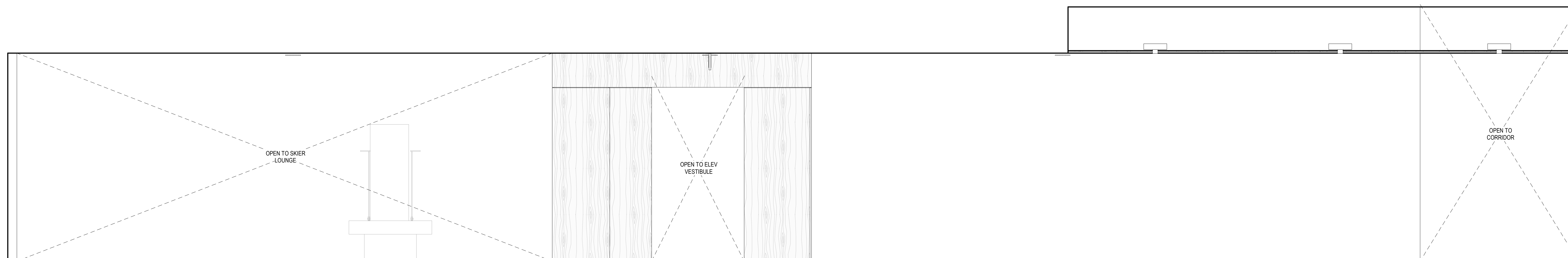
4 ELEV T5 VESTIBULE - B
SCALE: 1/2" = 1'-0"



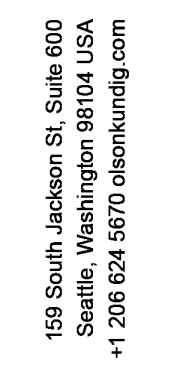
3 ELEV T5 VESTIBULE - A
SCALE: 1/2" = 1'-0"



2 CORRIDOR, C102 - B
SCALE: 1/2" = 1'-0"

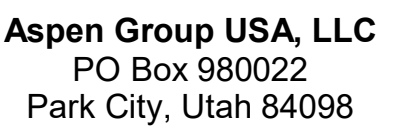


1 CORRIDOR, C102 - A
SCALE: 1/2" = 1'-0"



Olson Kundig

9300 MARSAC AVE
PARK CITY, UT 84060



Consultant
David H20
1 N University Ave, Suite 290
Provo, UT 84604

**Escape Architect
Design**
1 South High Tech Drive, Suite 100
Salt Lake City, Utah 84047

Communications Writer
Pay Group
 Mainelli Road
 Lebury, VT

Consultant
Services
1st Avenue, Suite 200A
Seattle, WA 98104

Protection Engineer
Ken Hughes
Research Drive, Suite 305C
Borlough, MA 01581

Michael Bates
5 North Creek Parkway, Suite 304
Ell, WA 98011

Structural Engineer
Knudson Klemencic Associates
5th Ave, Suite 3200
Seattle, WA 98101

SE MLK Blvd, Suite 210
Portland, Oregon 97219

ing Envelope Consultant
N 34th St
le, WA 98103

Feasibility Consultant
Ello Pacifica
100 Westlake Ave N, Suite F
Seattle, WA 98109

USA
Fourth Ave., Suite 3100
Seattle, WA 98154

principal architect TK, KM
project manager TM, JB, LB, MD
drawn by SK, SS, JR, CP, AL

checked by Checker
job no. 20052

visions:

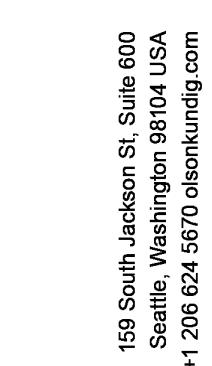
date _____ by _____

ISSUED FOR
CONSTRUCTION
11/18/2022

SUPERIOR ELEVATIONS
 POWER C - OWNERS
 JUNGE

A5.1C.05





Olson Kundig

SOMMET BLANC
9300 MARSAC AVE
PARK CITY, UT 84060



Aspen Group USA, LLC
PO Box 980022
Park City, Utah 84098

Pool Consultant
Cloward H20
2696 N University Ave, Suite 290
Provo, UT 84604

Landscape Architect
EPG Design
6949 South High Tech Drive, Suite 100
Midvale, Utah 84047

Specifications Write
Friday Group
88 Mainelli Road
Middlebury, VT

Code Consultant
Holmes
600 1st Avenue, Suite 200A
Seattle, WA 98104

Fire Protection Engineer
Jensen Hughes
One Research Drive, Suite 305C
Westborough, MA 01581

Vertical Transportation Consultant
Lerch Bates
19515 North Creek Parkway, Suite 300
Tampa, FL 33613-4000
813/971-1100

Structural Engineer
Magnusson Klemencic Associates
1301 5th Ave, Suite 3200

Lighting Designer
O
1319 SE MLK Blvd, Suite 210

Building Envelope Consultant
RDH
2101 N 34th St

Accessibility Consultant
Studio Pacifica
2144 Westlake Ave N, Suite F

MEP Engineer
WSP USA
1004 Fourth Ave., Suite 2400

588008, VVA 95134

principal architect TK, KM
project manager TM, JB, LB, MD
drawn by SK, SS, JR, CP, AL,
ML, EK, NS, CP

checked by Checker
job no. 20062

revisions:

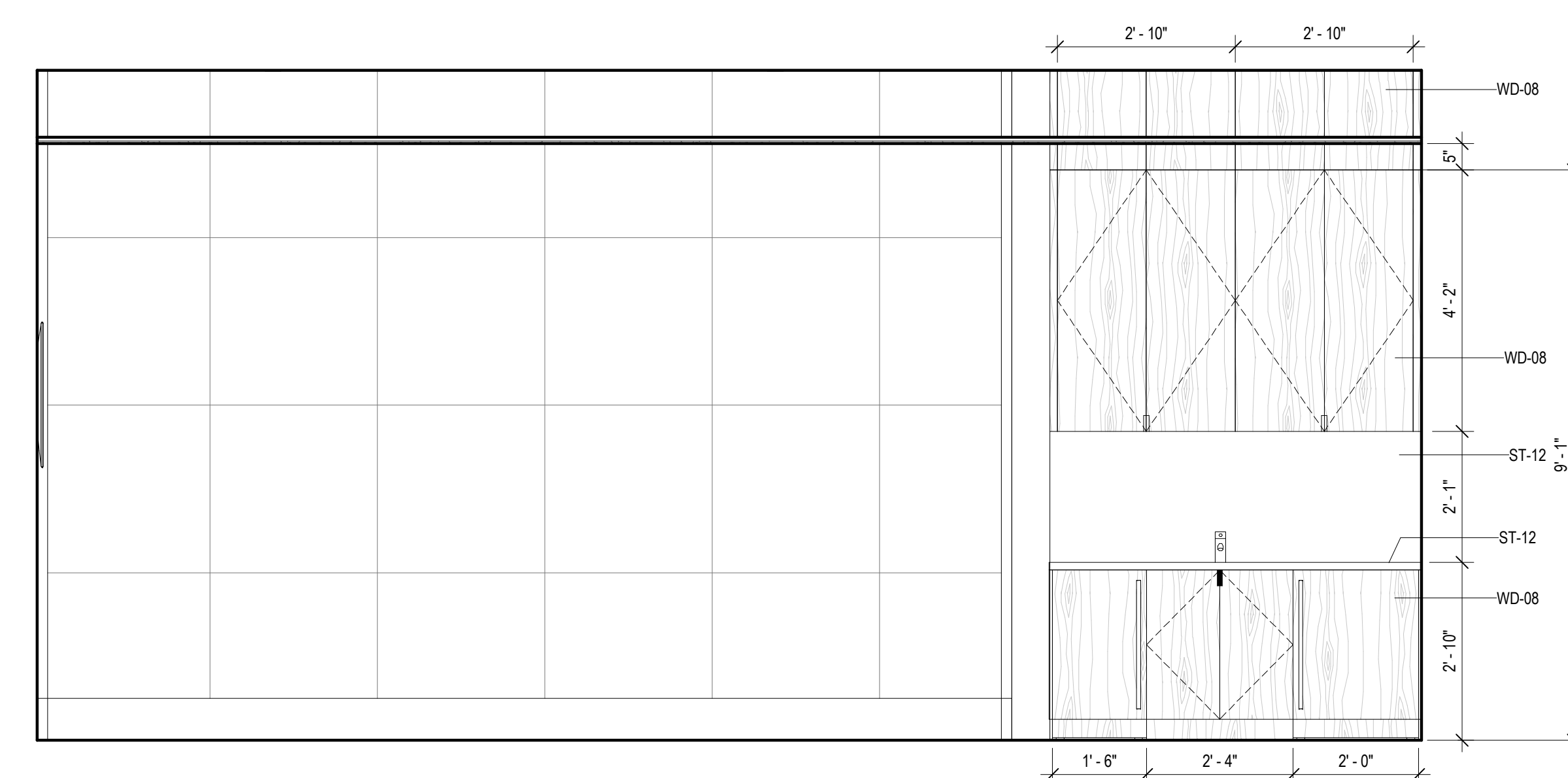
[illegible]

no.	date	by
-----	------	----

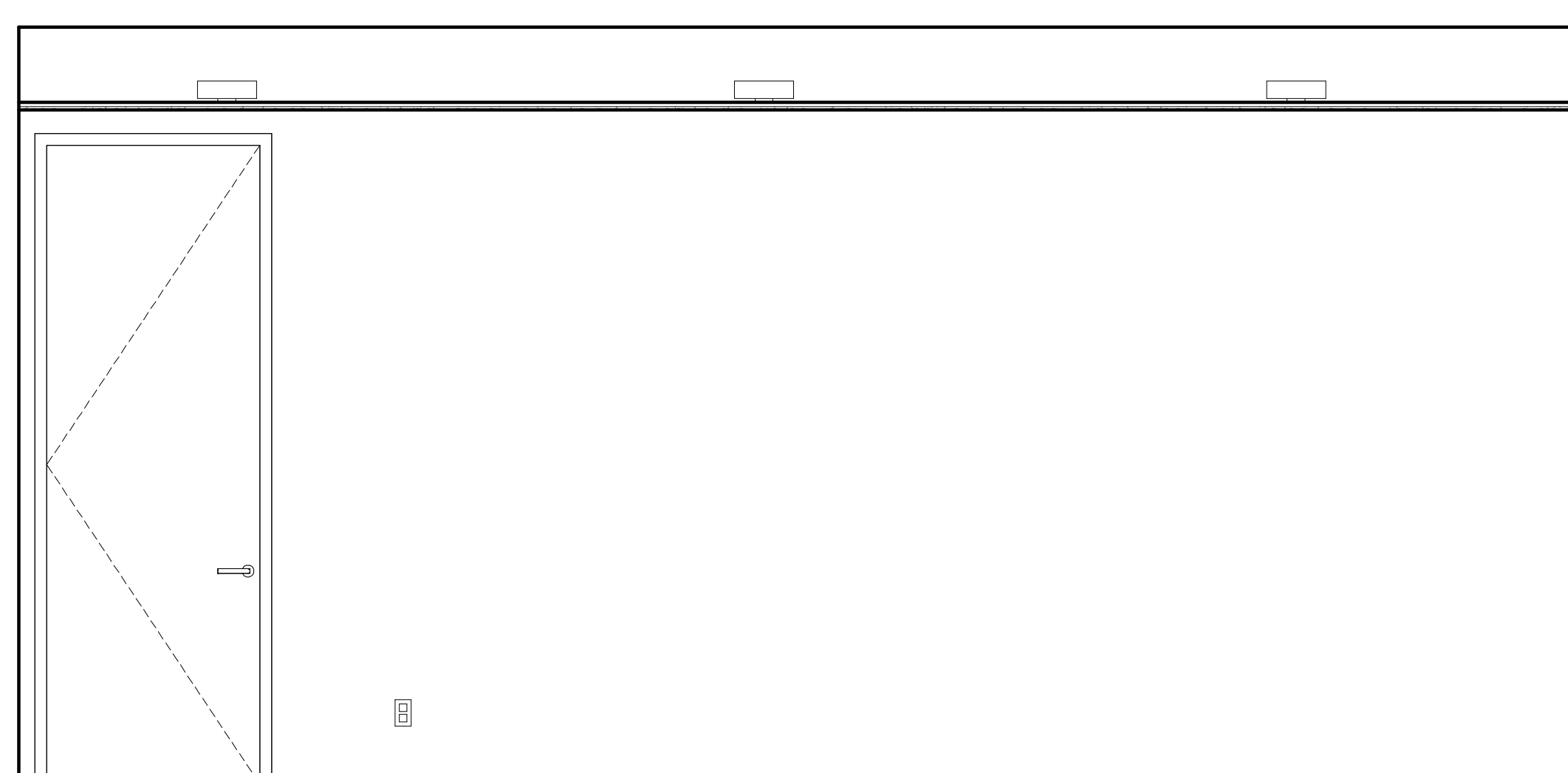
ISSUED FOR
CONSTRUCTION
11/18/2022

INTERIOR ELEVATIONS -
TOWER C - GOLF
SIMULATOR ROOM 1

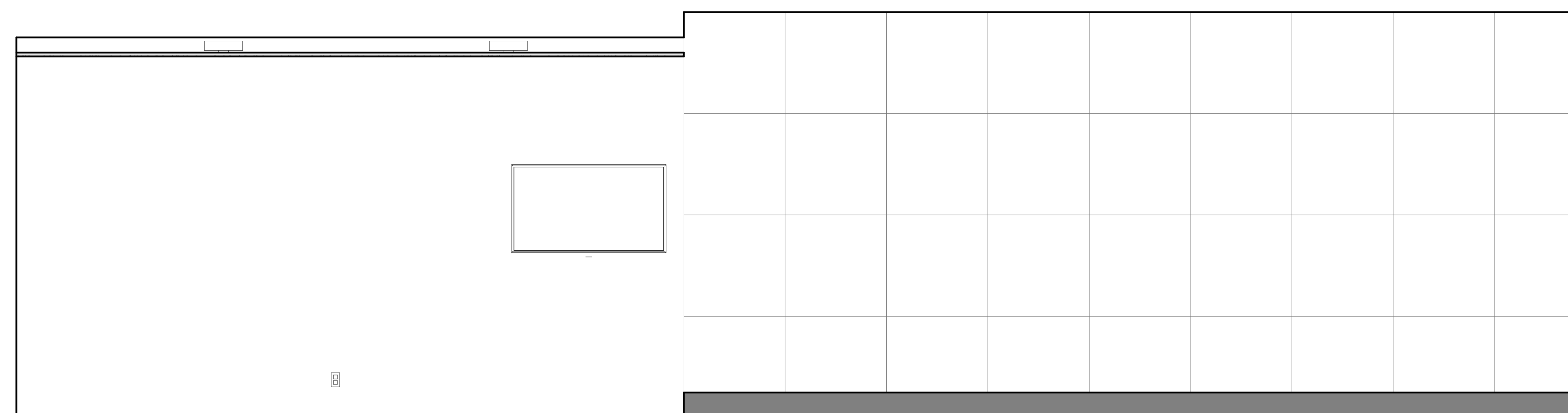
A5.1C.06



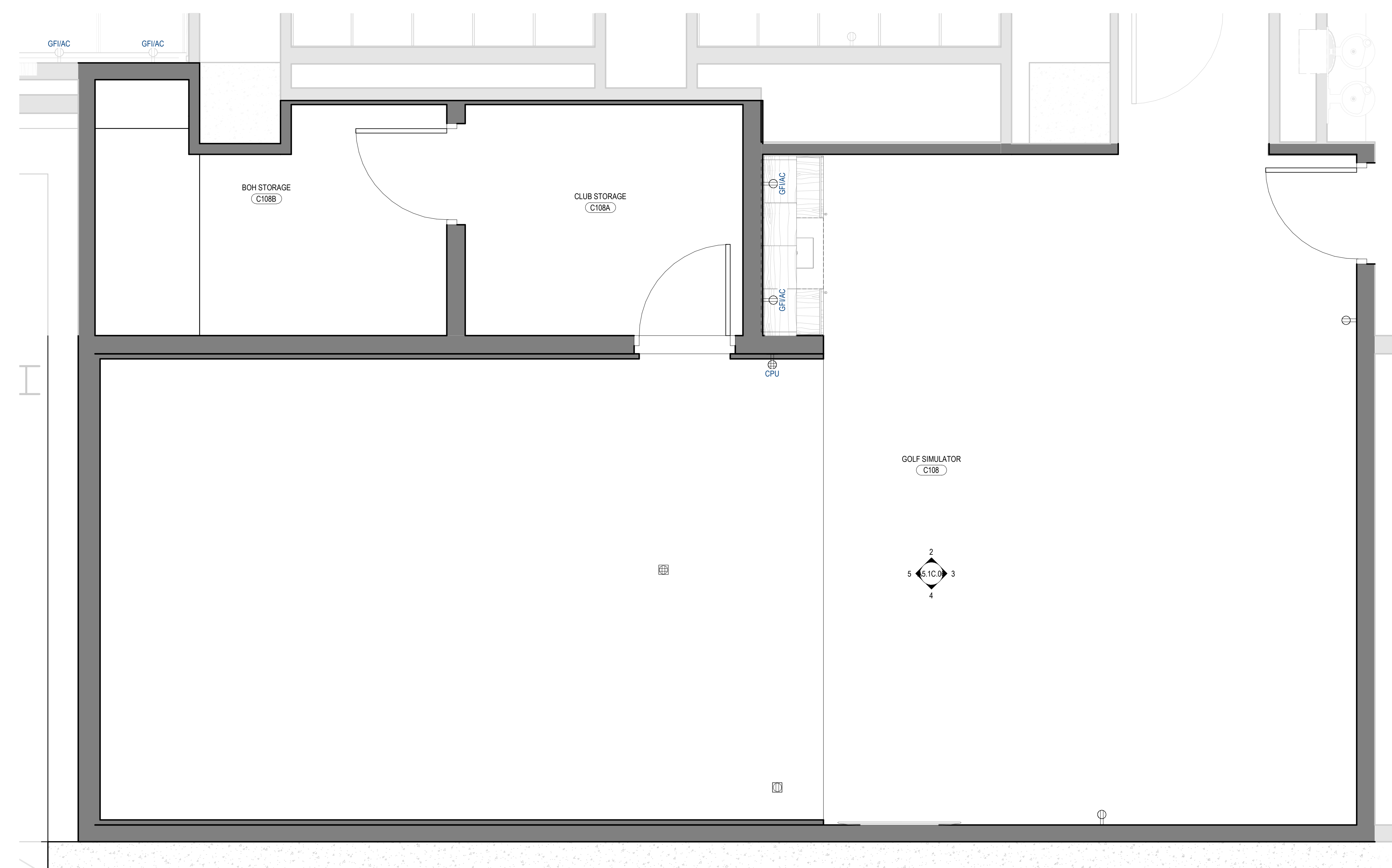
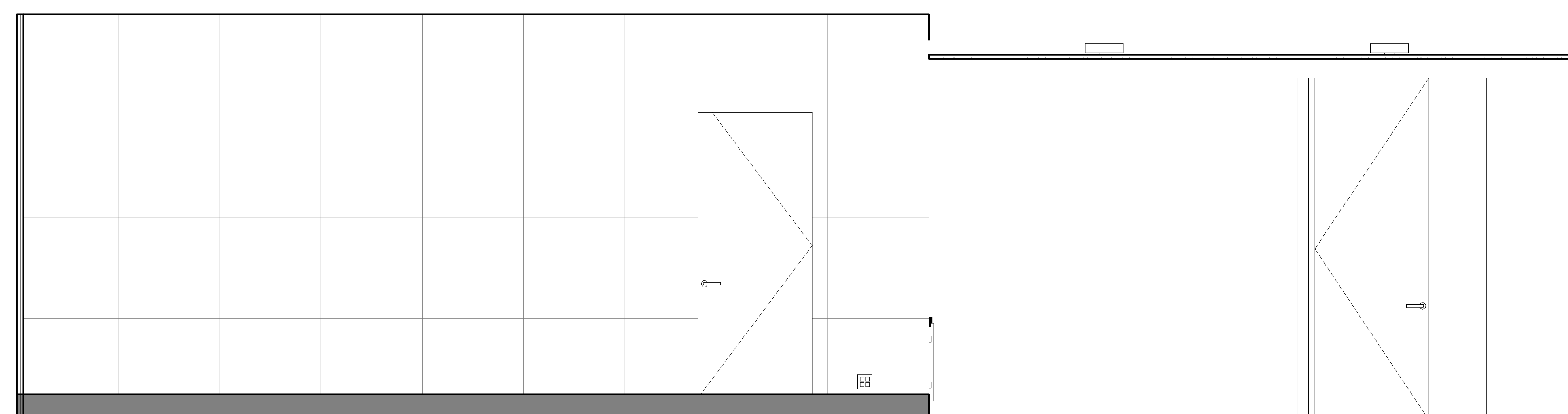
5 GOLF SIMULATOR, C108 - D
SCALE: 1/2" = 1'-0"



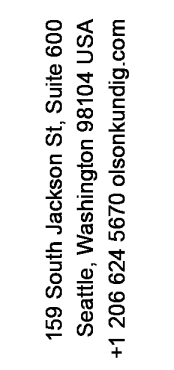
3 GOLF SIMULATOR, C108 - B
SCALE: 1/2" = 1'-0"



4 GOLF SIMULATOR, C108 - C
SCALE: 1/2" = 1'-0"

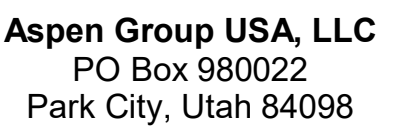


1 ENLARGED PLAN - GOLF SIMULATOR ROOM 1
SCALE: 1/2" = 1'-0"



Olson Kundig

9300 MARSAC AVE
PARK CITY, UT 84060



Pool Consultant
Cloward H20
2696 N University Ave, Suite 290
Provo, UT 84604

Landscape Architect
EPG Design
6949 South High Tech Drive, Suite 100
Midvale, Utah 84047

Specifications Writer
Friday Group
88 Mainelli Road
Middlebury, VT

Code Consultant
Holmes
600 1st Avenue, Suite 200A
Seattle, WA 98104

Fire Protection Engineer
Jensen Hughes
One Research Drive, Suite 305C
Westborough, MA 01581

Vertical Transportation Consultant
Lerch Bates
19515 North Creek Parkway, Suite 304
Bothell, WA 98011

Structural Engineer
Magnusson Klemencic Associates
1301 5th Ave, Suite 3200
Seattle, WA 98101

Lighting Designer
O-
1319 SE MLK Blvd, Suite 210
Portland, Oregon 97219

Building Envelope Consultant
RDH
2101 N 34th St
Seattle, WA 98103

Accessibility Consultant
Studio Pacifica
2144 Westlake Ave N, Suite F
Seattle, WA 98109

MEP Engineer
WSP USA
1001 Fourth Ave., Suite 3100
Seattle, WA 98154

principal architect	TK, KM
project manager	TM, JB, LB, MD
drawn by	SK, SS, JR, CP, AL, NH, EK, BD, EB

checked by Checker
job no. 20052
date 11/18/2022

revisions:

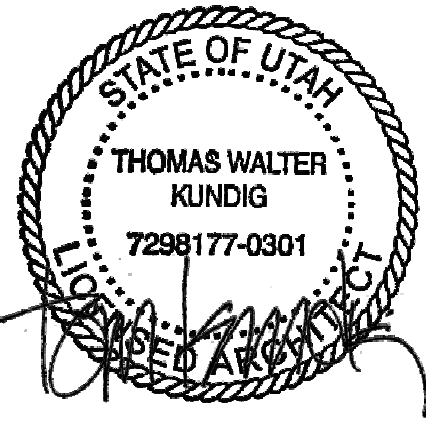
no.	date	by
-----	------	----

ISSUED FOR
CONSTRUCTION
11/18/2022

INTERIOR ELEVATIONS -
TOWER C - GOLF
SIMULATOR ROOM 2

A5.1C.07





109 South Jackson St. Suite 600
Seattle, Washington 98104 USA
+1 206 458 1810 oolsonkundig.com

Olson Kundig

SOMMET BLANC
6300 MARSAC AVE
PARK CITY, UT 84060



Aspen Group USA, LLC
PO Box 980022
Park City, Utah 84098

Pool Consultant
Cloward H2O
2696 N University Ave, Suite 250
Provo, UT 84604

Landscape Architect
EPG Design
6948 South High Tech Drive, Suite 100
Midvale, Utah 84047

Specifications Writer
Friday Group
88 Mainelli Road
Middlebury, VT

Code Consultant
Holmes
600 1st Avenue, Suite 200A
Seattle, WA 98104

Fire Protection Engineer
Jensen Hughes
One Research Drive, Suite 305C
Westborough, MA 01581

Vertical Transportation Consultant
Larch Bates
19515 North Creek Parkway, Suite 304
Bothell, WA 98011

Structural Engineer
Magnusson Klemencic Associates
1301 5th Ave, Suite 3200
Seattle, WA 98101

Lighting Designer
O
3319 SE MLK Blvd, Suite 210
Portland, Oregon 97219

Building Envelope Consultant
RDH
2101 N 34th St
Seattle, WA 98103

Accessibility Consultant
Studio Pacifica
2144 Westlake Ave N, Suite F
Seattle, WA 98109

MEP Engineer
WSP USA
1001 Fourth Ave., Suite 3100
Seattle, WA 98154

principal architect __TK, KM__
project manager __TM, JR, LS, MD__
drawn by __SK, SS, JR, CP, AL__
checked by __NH, EK, BD, EB__

checked by __Checker__
job no. 2052
date 11/18/2022

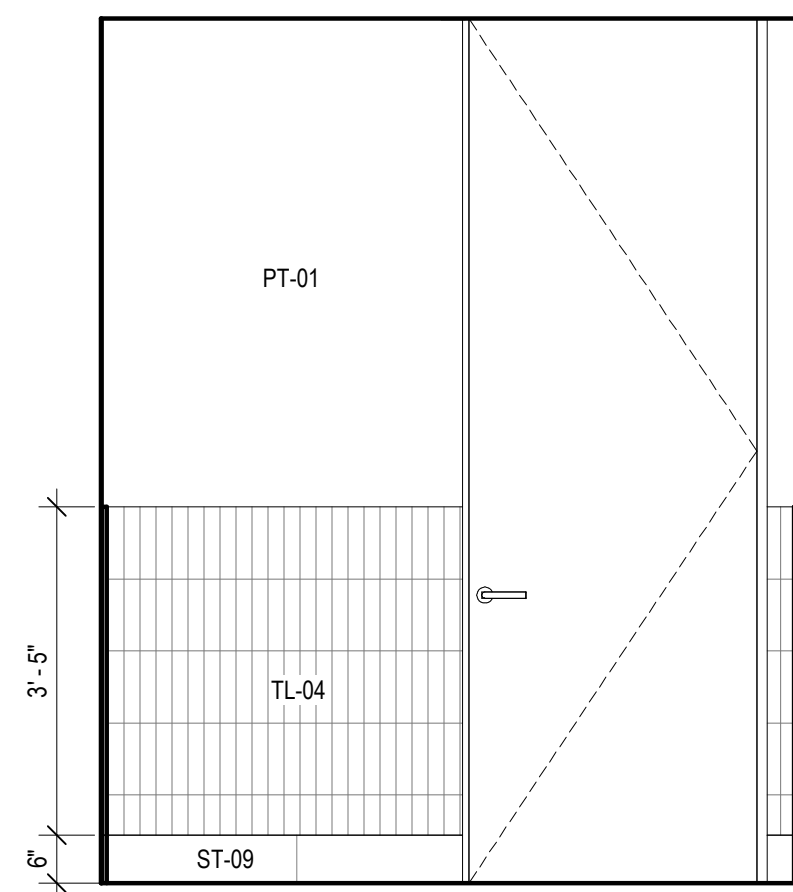
revisions:

no. date by

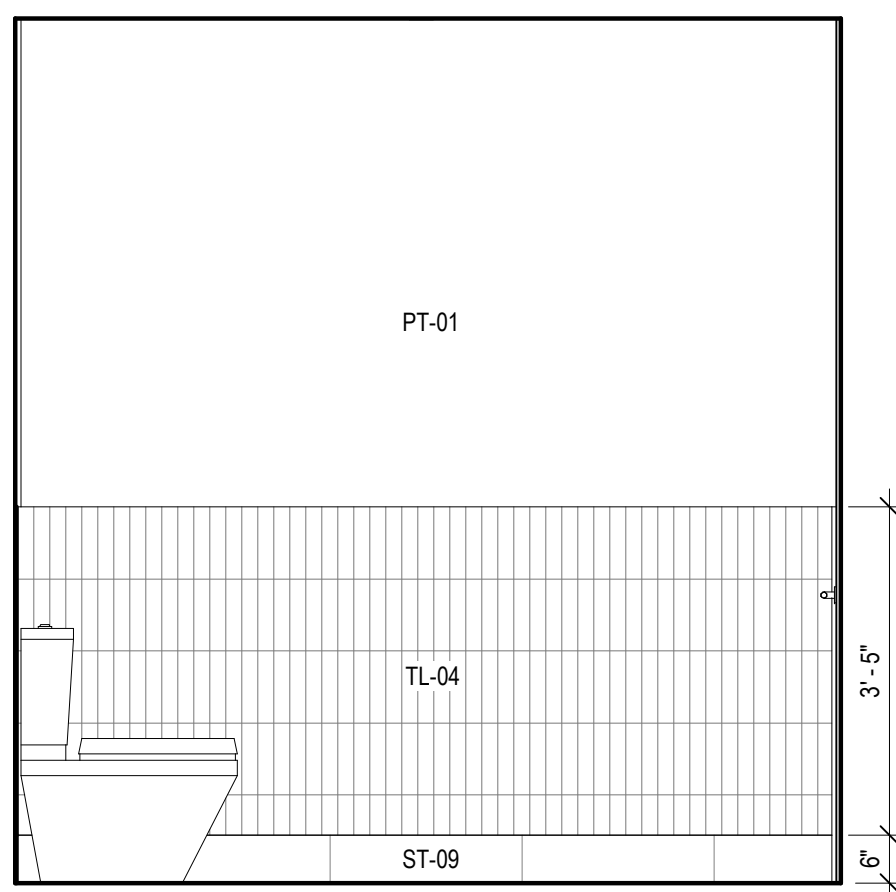
ISSUED FOR
CONSTRUCTION
11/18/2022

INTERIOR ELEVATIONS -
TOWER C - TOILET 1

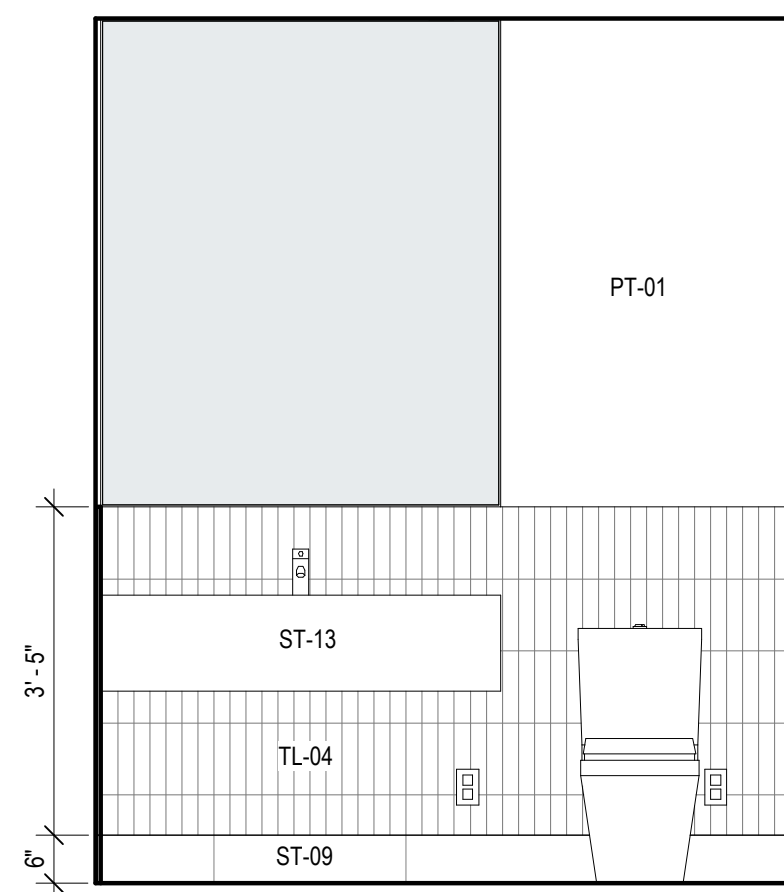
A5.1C.08



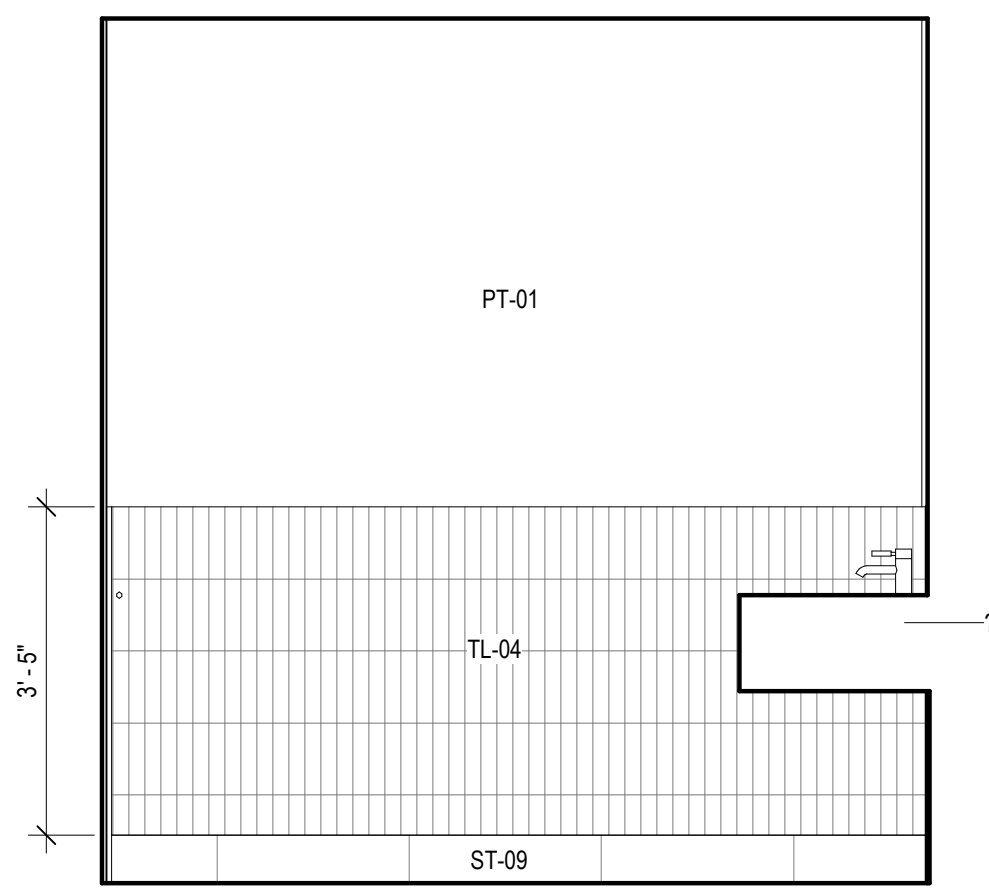
5 TOILET, C104 - D
SCALE: 1/2" = 1'-0"



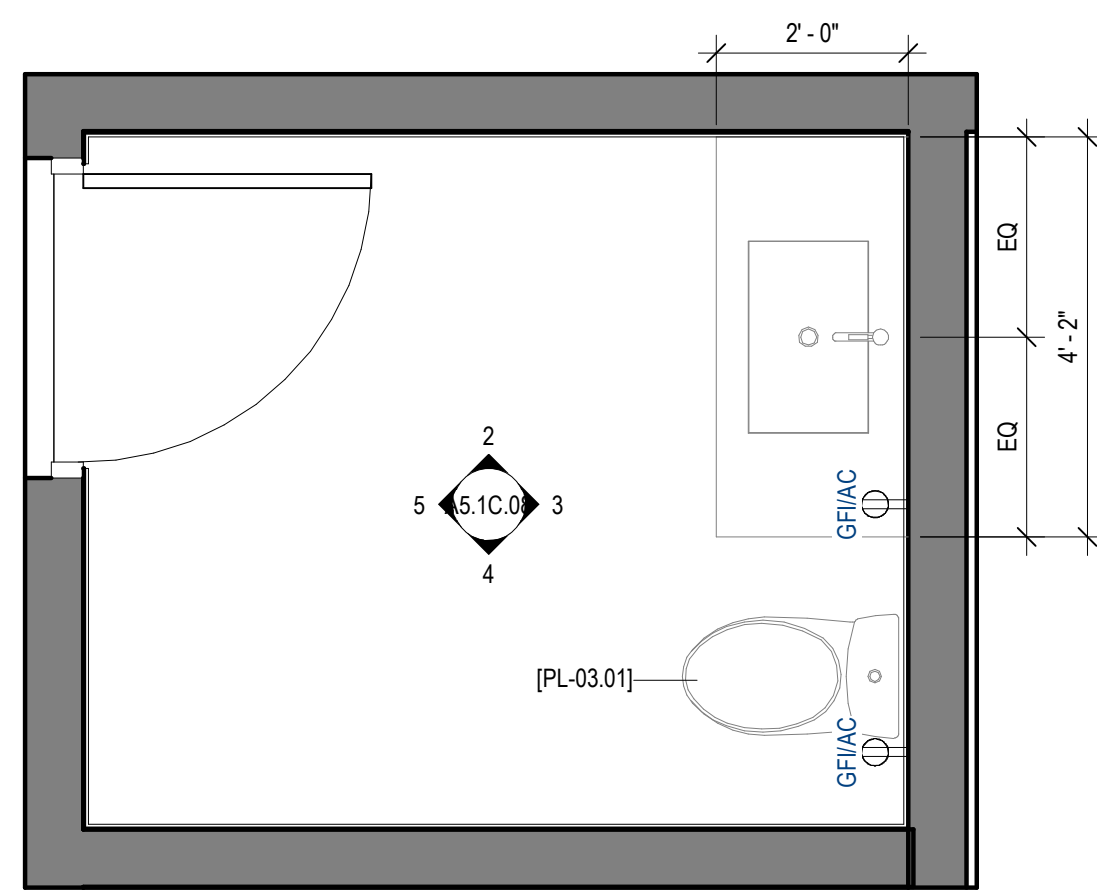
4 TOILET, C104 - C
SCALE: 1/2" = 1'-0"



3 TOILET, C104 - B
SCALE: 1/2" = 1'-0"



2 TOILET, C104 - A
SCALE: 1/2" = 1'-0"



1 ENLARGED PLAN - TOILET 1
SCALE: 1/2" = 1'-0"