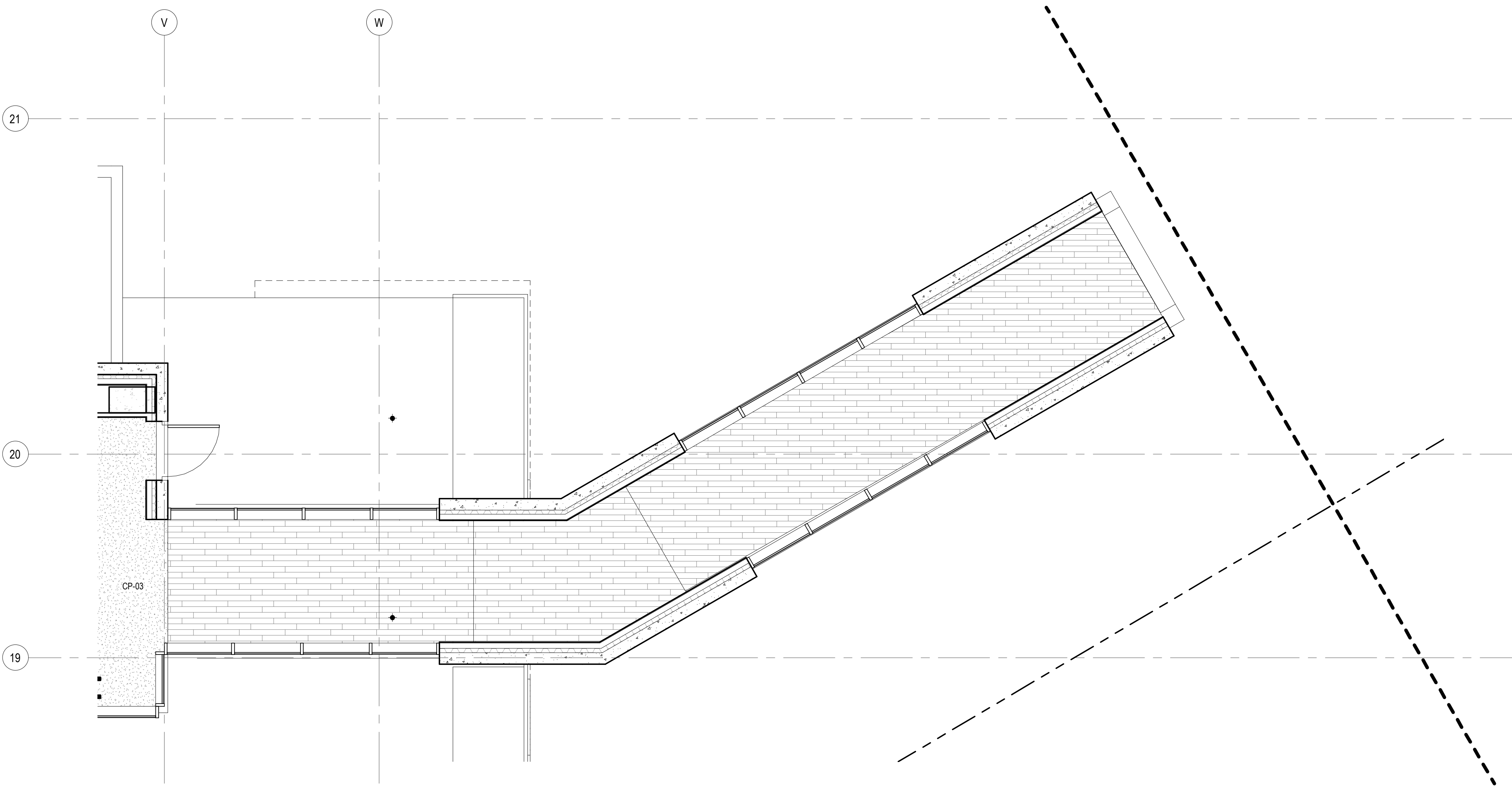


FINISH LEGEND

HATCH PATTERN INDICATE EXTENT OF FLOOR FINISH TYPES

	WOOD FLOORING		SPORTS
	TILE		RESILIENT FLOORING
	CARPET		CONCRETE
	EXTERIOR PAVERS		EXTERIOR DECK TILE



1 FINISH PLAN - TOWER BC CONNECTOR - AREA F
SCALE: 1/4" = 1'-0"

109 South Jackson S. Suite 600
Seattle, Washington 98104 USA
+1 206 424 1810 olsonkundig.com

Olson Kundig

SOMMET BLANC
8300 MARSAC AVE
PARK CITY, UT 84060



Aspen Group USA, LLC
PO Box 980022
Park City, Utah 84098

Pool Consultant
Cloward H2O
2696 N University Ave, Suite 200
Provo, UT 84604

Landscape Architect
EPG Design
6948 South High Tech Drive, Suite 100
Midvale, Utah 84047

Specifications Writer
Friday Group
88 Mainelli Road
Middlebury, VT

Code Consultant
Holmes
600 1st Avenue, Suite 200A
Seattle, WA 98104

Fire Protection Engineer
Jensen Hughes
One Research Drive, Suite 305C
Westborough, MA 01581

Vertical Transportation Consultant
Larch Bates
1915 North Creek Parkway, Suite 304
Bothell, WA 98011

Structural Engineer
Magnusson Klemencic Associates
1301 5th Ave, Suite 3200
Seattle, WA 98101

Lighting Designer
O
319 SE MLK Blvd, Suite 210
Portland, Oregon 97219

Building Envelope Consultant
RDH
2101 N 34th St
Seattle, WA 98103

Accessibility Consultant
Studio Pacifica
2144 Westlake Ave N, Suite F
Seattle, WA 98109

MEP Engineer
WSP USA
1001 Fourth Ave., Suite 3100
Seattle, WA 98154

principal architect TK, KM
project manager TM, JB, LD, MD
drawn by SK, SS, JR, CP, AL
checked by NH, EK, BD, EB

checked by Checker
job no. 2052
date 11/18/2022

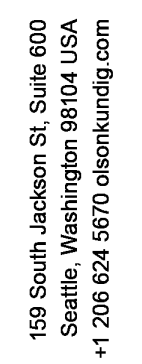
revisions:

no. date by

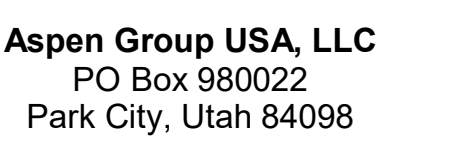
ISSUED FOR
CONSTRUCTION
11/18/2022

FINISH PLAN - TOWER
BC CONNECTOR - AREA
F

A2.5BC.1f



SOMMET BLANC
9300 MARSAC AVE
PARK CITY, UT 84060



Pool Consultant
Cloward H2O
2696 N University Ave, Suite 290
Provo, UT 84604

Landscape Architect
EPG Design
5949 South High Tech Drive, Suite 100
Midvale, Utah 84047

Specifications Writer
Friday Group
38 Mainelli Road
Middlebury, VT

Code Consultant
Holmes
600 1st Avenue, Suite 200A
Seattle, WA 98104

Fire Protection Engineer
Jensen Hughes
One Research Drive, Suite 305C
Westborough, MA 01581

Vertical Transportation Consultant
Lerch Bates
19515 North Creek Parkway, Suite 304
Bothell, WA 98011

Structural Engineer
Magnusson Klemencic Associates
1301 5th Ave, Suite 3200
Seattle, WA 98101

Lighting Designer
1319 SE MLK Blvd, Suite 210
Portland, Oregon 97219

Building Envelope Consultant!
RDH
2101 N 34th St
Seattle, WA 98103

Accessibility Consultant
Studio Pacifica
2144 Westlake Ave N, Suite F
Seattle, WA 98109

MEP Engineer
WSP USA
1001 Fourth Ave., Suite 3100
Seattle, WA 98154

principal architect TK, KM
project manager TM, JB, LB, MD
drawn by SK, SS, JR, CP, AL,

checked by Checker
job no. 20062

revisions:

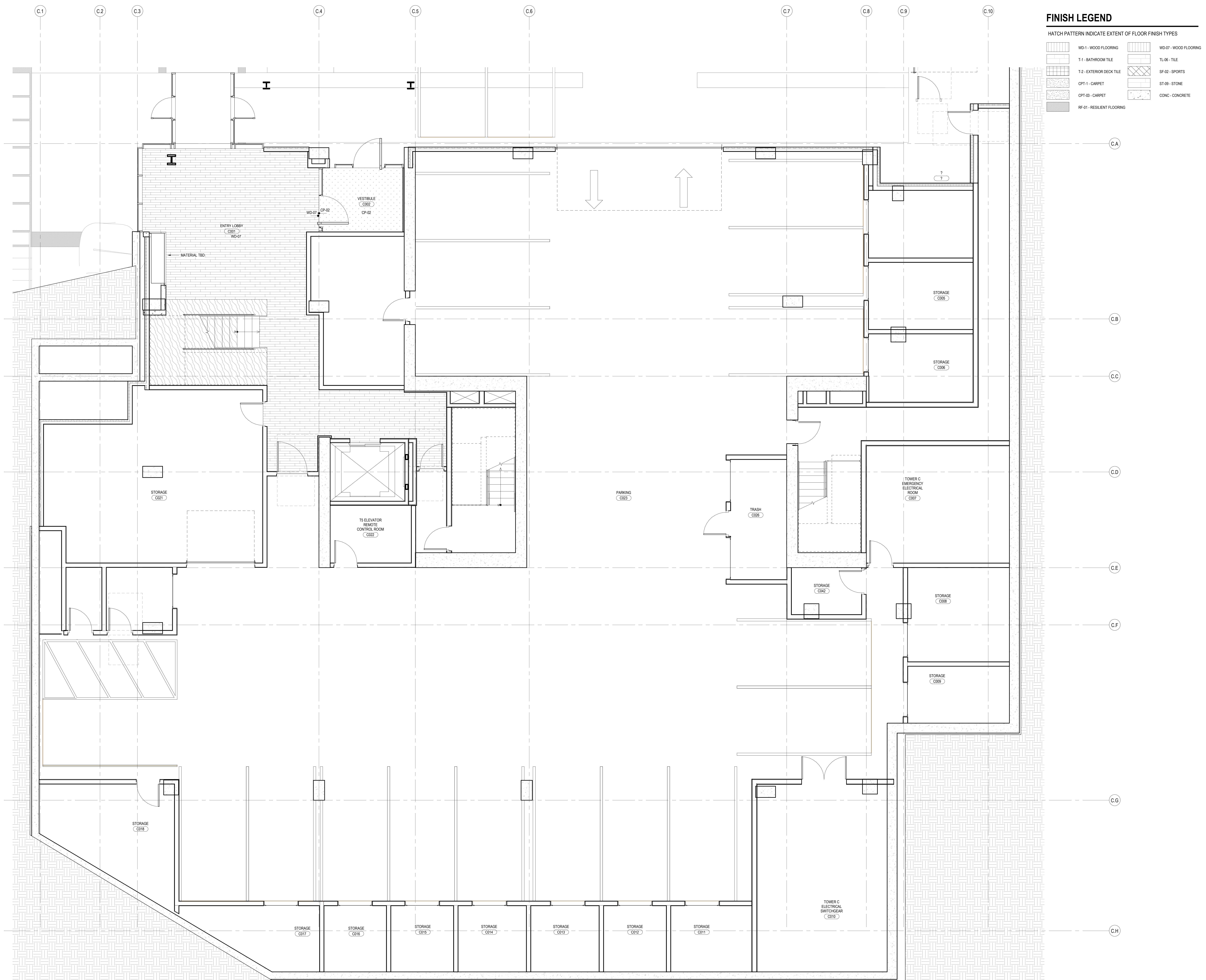
[illegible]

no.	date	by
-----	------	----

ISSUED FOR
CONSTRUCTION
11/18/2022

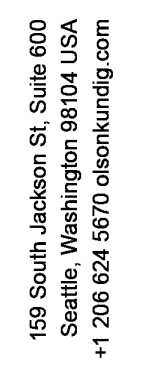
FINISH PLAN - TOWER C
LVL P1

A2.5C.01

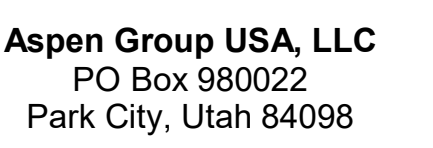


1 LEVEL PARKING FINISH PLAN - TOWER C
SCALE: 1/4" = 1'-0"

SCALE: 1/4" = 1'-0"



SOMMET BLANC
9300 MARSAC AVE
PARK CITY, UT 84060



Pool Consultant
Cloward H2O
2696 N University Ave, Suite 290
Provo, UT 84604

Landscape Architect
EPG Design
5949 South High Tech Drive, Suite 100
Midvale, Utah 84047

Specifications Writer
Friday Group
88 Mainelli Road
Middlebury, VT

Code Consultant
Holmes
600 1st Avenue, Suite 200A
Seattle, WA 98104

Fire Protection Engineer
Jensen Hughes
One Research Drive, Suite 305C
Westborough, MA 01581

Vertical Transportation Consultant
Lerch Bates
19515 North Creek Parkway, Suite 304
Bothell, WA 98011

Structural Engineer
Magnusson Klemencic Associates
1301 5th Ave, Suite 3200
Seattle, WA 98101

Lighting Designer
D.
 1319 SE MLK Blvd, Suite 210
 Portland, Oregon 97219

Building Envelope Consultant
RDH
2101 N 34th St
Seattle, WA 98103

Accessibility Consultant
Studio Pacifica
2144 Westlake Ave N, Suite F
Seattle, WA 98109

WSP USA
1001 Fourth Ave., Suite 3100
Seattle, WA 98154

principal architect TK, KM
project manager TM, JB, LB, MD
drawn by SK, SS, JR, CP, AL,

checked by Checker
job no. 20052
date 4/18/2020

revisions:

[illegible]

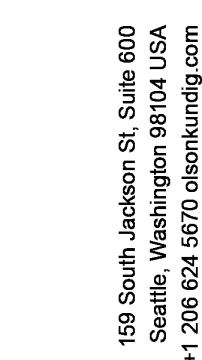
no.	date	by
-----	------	----

ISSUED FOR
CONSTRUCTION
11/18/2022

FINISH PLAN - TOWER C
LVL L1

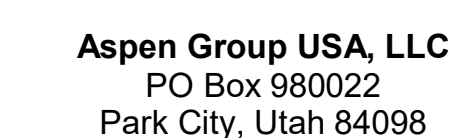
A2.5C.11





Olson Kundia

SOMMET BLANC
9300 MARSAC AVE
PARK CITY, UT 84060



Pool Consultant
Cloward H2O
2696 N University Ave, Suite 290
Provo, UT 84604

Landscape Architect
EPG Design
6949 South High Tech Drive, Suite 100
Midvale, Utah 84047

Specifications Writer
Friday Group
88 Mainelli Road
Middlebury, VT

Code Consultant
Holmes
600 1st Avenue, Suite 200A
Seattle, WA 98104

Fire Protection Engineer
Jensen Hughes
One Research Drive, Suite 305C
Westborough, MA 01581

Vertical Transportation Consultant
Lerch Bates
19515 North Creek Parkway, Suite 300
Bothell, WA 98011

Structural Engineer
Magnusson Klemencic Associates
1301 5th Ave, Suite 3200
Seattle, WA 98101

Lighting Designer
O-
1319 SE MLK Blvd, Suite 210
Portland, Oregon 97219

Building Envelope Consultant
RDH
2101 N 34th St
Seattle, WA 98103

Accessibility Consultant
Studio Pacifica
2144 Westlake Ave N, Suite F
Seattle, WA 98109

MEP Engineer
WSP USA
1001 Fourth Ave., Suite 3100
Seattle, WA 98154

principal architect	TK, KM
project manager	TM, JB, LB, MD
drawn by	SK, SS, JR, CP.

checked by Checker
job no. 20062

revisions:

[illegible]












no.	date	t
-----	------	---

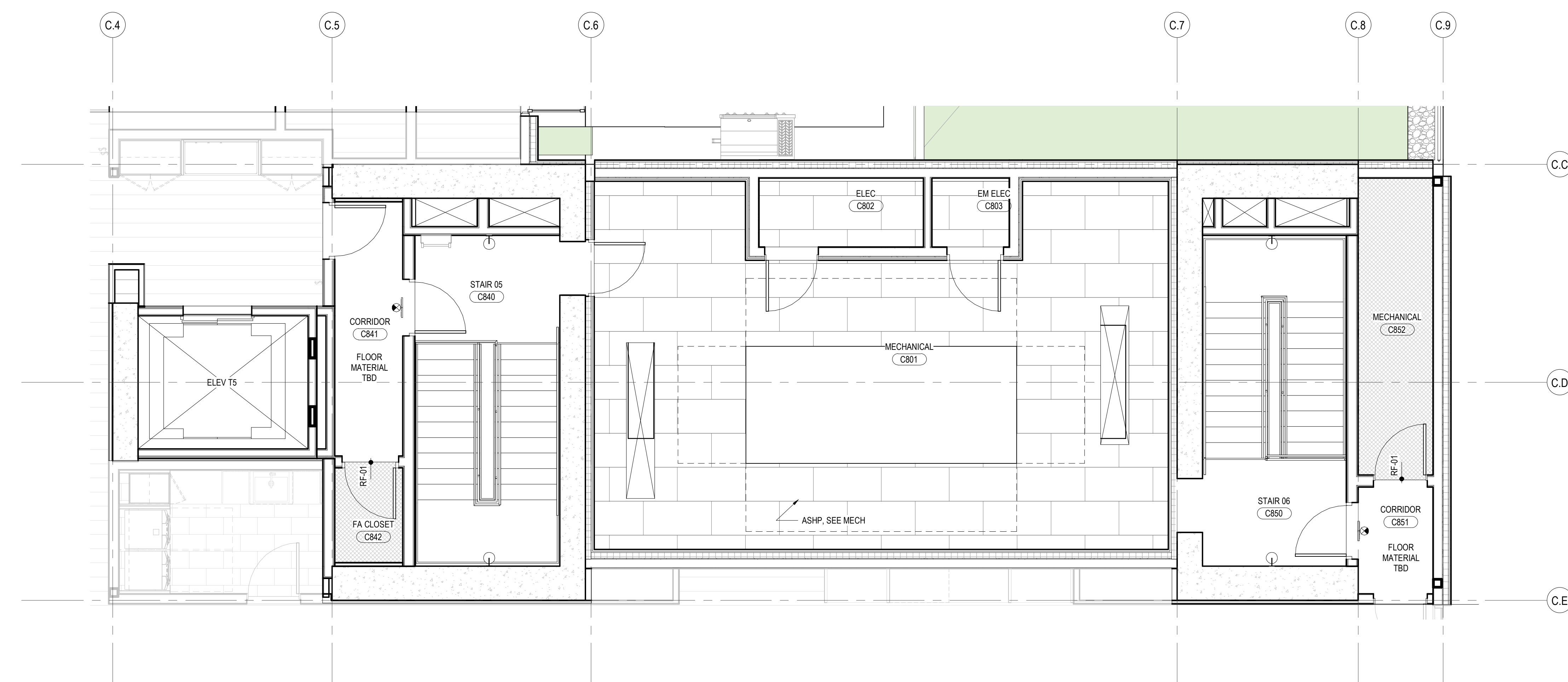
ISSUED FOR
CONSTRUCTION
11/18/2022

FINISH PLAN - TOWER C
- CORES

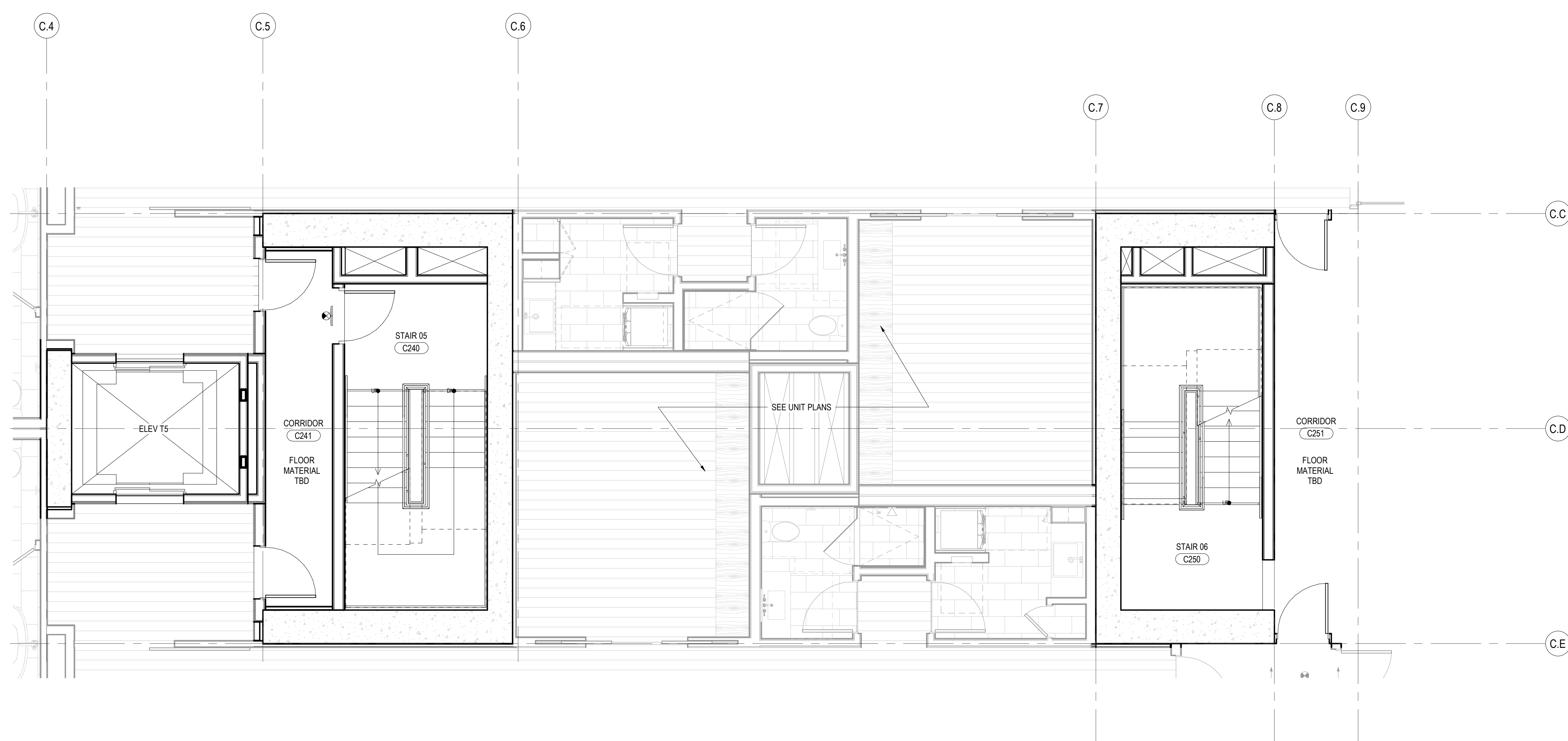
A2.5C.12

HATCH PATTERN INDICATE EXTENT OF FLOOR FINISH TYPES

	WD-1 - WOOD FLOORING		WD-07 - WOOD FLOORING
	T-1 - BATHROOM TILE		TL-06 - TILE
	T-2 - EXTERIOR DECK TILE		SF-02 - SPORTS
	CPT-1 - CARPET		ST-09 - STONE
	CPT-03 - CARPET		CONC - CONCRETE
	RF-01 - RESILIENT FLOORING		



2 FINISH PLAN - TOWER C - LEVEL 8 - CORE
SCALE: 1/4" = 1'-0"



1 FINISH PLAN - TOWER C - LVL 2-7 - CORE
SCALE: 1/4" = 1'-0"