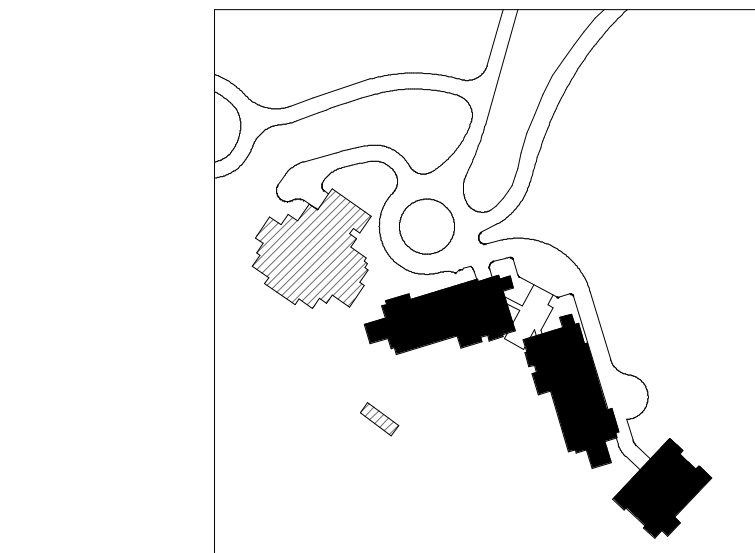


PLAN - OVERALL - LVL 1

**A2.0.11**


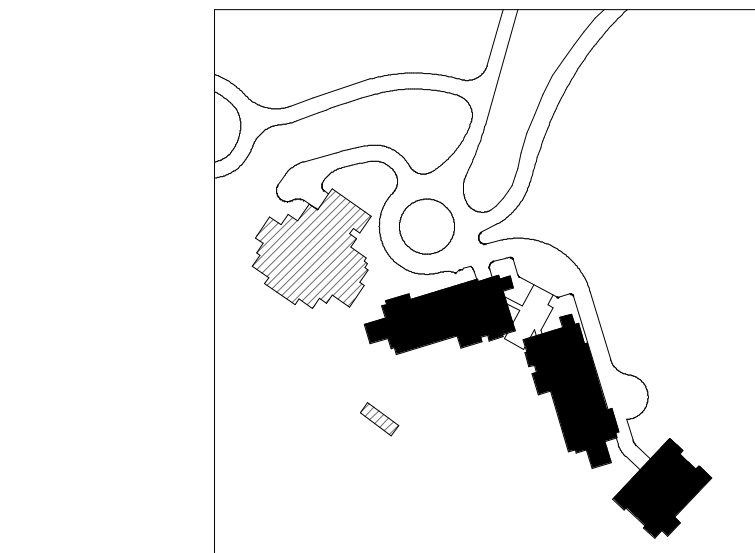




PLAN - OVERALL - LVL 2

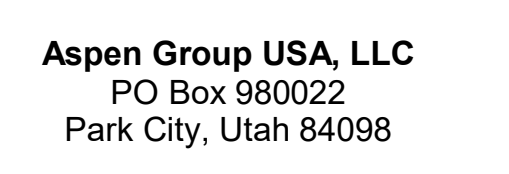
**A2.0.12**





0 4' 8' 12' 16' 32' 4

SOMMET BLANC  
9300 MARSAC AVE  
PARK CITY, UT 84060

[illegible]

PLAN - OVERALL - LVL 3

**A2.0.13**





1 OVERALL - TOWER A LVL 4 / TOWER B LVL 3 / TOWER C LVL 2  
SCALE: 1/16" = 1'-0"

109 South Jackson St. Suite 600  
Seattle, Washington 98104 USA  
+1 206 424 0810 olsonkundig.com

Olson Kundig

SOMMET BLANC  
8300 MARSHALL AVE  
PARK CITY, UT 84060



Aspen Group USA, LLC  
PO Box 980022  
Park City, Utah 84098

Pool Consultant  
Cloward H2O  
2696 N University Ave, Suite 200  
Provo, UT 84604

Landscape Architect  
EPG Design  
6940 South High Tech Drive, Suite 100  
Midvale, Utah 84047

Specifications Writer  
Friday Group  
88 Mainelli Road  
Middlebury, VT

Code Consultant  
Holmes  
600 1st Avenue, Suite 200A  
Seattle, WA 98104

Fire Protection Engineer  
Jensen Hughes  
One Research Drive, Suite 305C  
Westborough, MA 01581

Vertical Transportation Consultant  
Larch Bates  
19515 North Creek Parkway, Suite 304  
Bothell, WA 98011

Structural Engineer  
Magnusson Klemencic Associates  
1301 5th Ave, Suite 3200  
Seattle, WA 98101

Lighting Designer  
O  
1319 SE MLK Blvd, Suite 210  
Portland, Oregon 97219

Building Envelope Consultant  
RDH  
2101 N 34th St  
Seattle, WA 98103

Accessibility Consultant  
Studio Pacifica  
2144 Westlake Ave N, Suite F  
Seattle, WA 98109

MEP Engineer  
WSP USA  
1001 Fourth Ave., Suite 3100  
Seattle, WA 98154

principal architect: TK, KM  
project manager: TM, JB, LS, MD  
drawn by: SK, SS, JR, CP, AL  
NH, EK, BD, EB

checked by: JB  
job no.: 2052  
date: 11/18/2022

revisions:

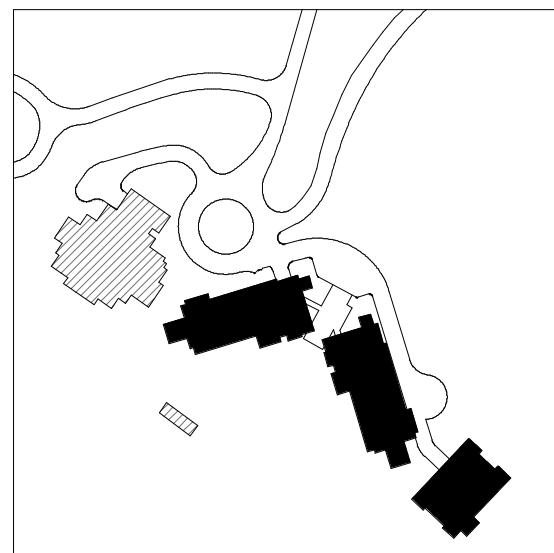
no. date by

ISSUED FOR  
CONSTRUCTION  
11/18/2022

PLAN - OVERALL - LVL 4

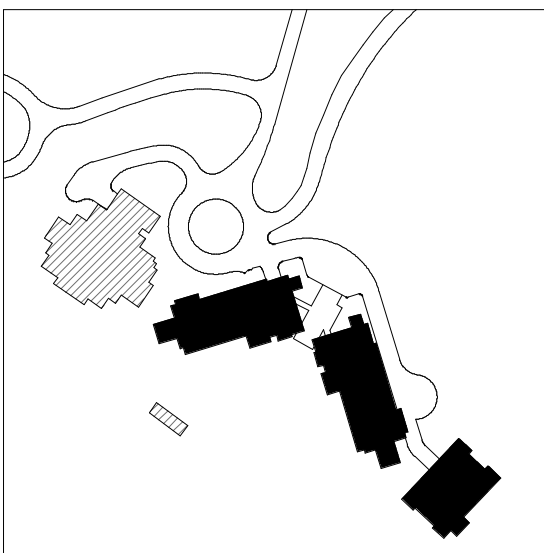
A2.0.14





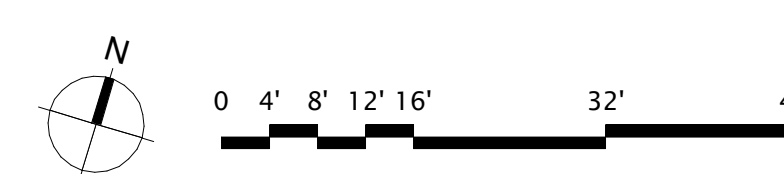
## A2.0.15





A2.0.16





159 South Jackson St., Suite 600  
Seattle, Washington 98104 USA  
1 206 624 5670 [ofseonkundig.com](mailto:ofseonkundig.com)

Olson Kundig

**SOMMET BLANC**  
99300 MARSAC AVE  
PARK CITY, UT 84060



**Aspen Group USA, LLC**  
PO Box 980022  
Park City, Utah 84098

**Pool Consultant**  
**Cloward H20**  
2696 N University Ave, Suite 290  
Provo, UT 84604

Landscape Architect  
**EPG Design**  
6949 South High Tech Drive, Suite 100  
Midvale, Utah 84047

Specifications Writer  
**Friday Group**  
88 Mainelli Road  
Middlebury, VT

Code Consultant  
**Holmes**  
600 1st Avenue, Suite 200A  
Seattle, WA 98104

Fire Protection Engineer  
**Jensen Hughes**  
One Research Drive, Suite 305C  
Westborough, MA 01581

Vertical Transportation Consultant  
**Lerch Bates**  
19515 North Creek Parkway, Suite 304  
Bothell, WA 98011

Structural Engineer  
Magnusson Klemencic Associates  
1301 5th Ave, Suite 3200  
Seattle, WA 98101

**Lighting Designer**  
O-  
1319 SE MLK Blvd, Suite 210  
Portland, Oregon 97219

**Building Envelope Consultant**  
**RDH**  
2101 N 34th St  
Seattle, WA 98103

Accessibility Consultant  
**Studio Pacifica**  
2144 Westlake Ave N, Suite F  
Seattle, WA 98109

**MEP Engineer**  
**WSP USA**  
1001 Fourth Ave., Suite 3100  
Seattle, WA 98154

principal architect	TK, KM
project manager	TM, JB, LB, MD
drawn by	SK, SS, JR, CP, AL, NH, EK, BD, EB

checked by JB  
job no. 20062  
date 11/18/2022

revisions:

---

---

---

---

---

---

---

---

---

---

---

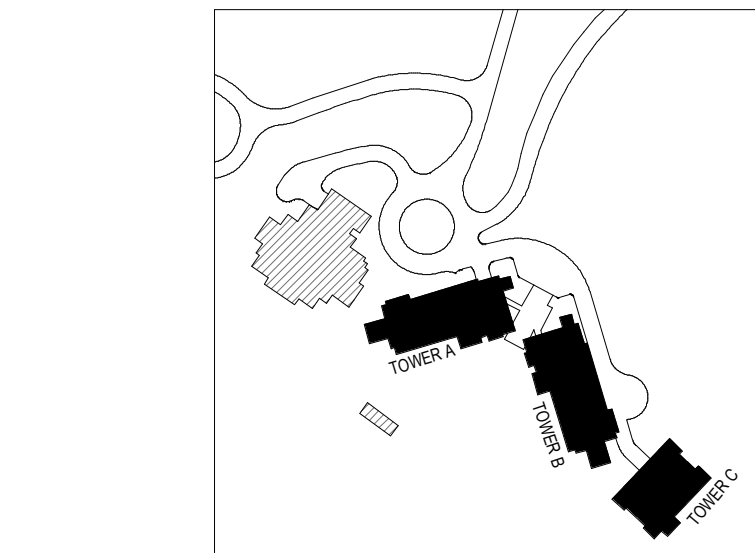
---

ISSUED FOR  
CONSTRUCTION  
11/18/2022

PLAN - OVERALL - ROOF  
- LVL 6

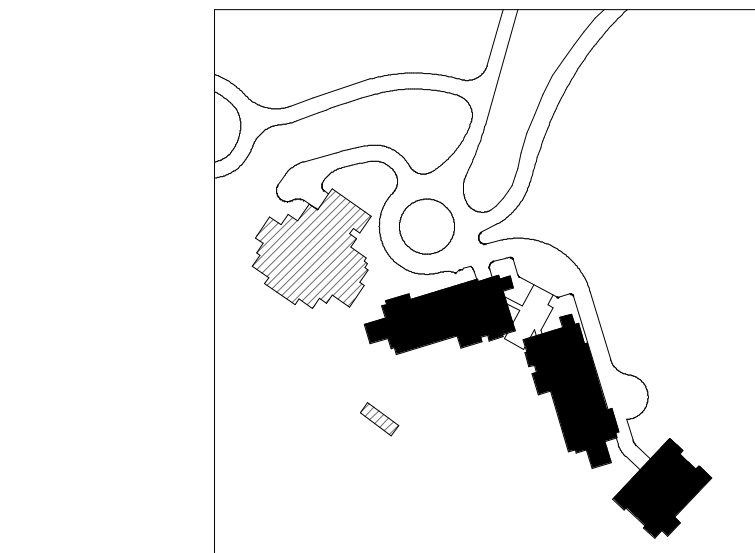
A2.0.17





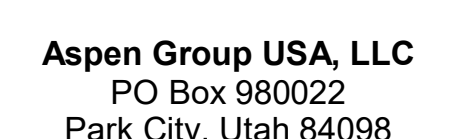
A2.0.18





Olson Kundig

**SOMMET BLANC**  
9300 MARSAC AVE  
DARK CITY, UT 84060



**WSP USA**  
1001 Fourth Ave., Suite 3100  
Seattle, WA 98154

revisions:

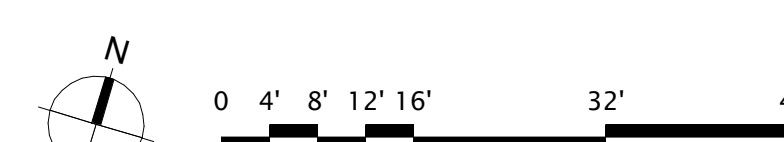
[illegible]

ISSUED FOR  
CONSTRUCTION  
11/18/2022

PLAN - OVERALL - LVL 8

**A2.0.19**





159 South Jackson St., Suite 600  
Seattle, Washington 98104 USA  
1 206 624 5670 [ofseonkundig.com](mailto:ofseonkundig.com)

Olson Kundig

**SOMMET BLANC**  
9300 MARSAC AVE  
PARK CITY, UT 84060



**Aspen Group USA, LLC**  
PO Box 980022  
Park City, Utah 84098

**Pool Consultant**  
**Cloward H20**  
2696 N University Ave, Suite 290  
Provo, UT 84604

**Landscape Architect**  
**EPG Design**  
6949 South High Tech Drive, Suite 100  
Midvale, Utah 84047

**Specifications Write**  
**Friday Group**  
88 Mainelli Road  
Middlebury, VT

**Code Consultant**  
**Holmes**  
600 1st Avenue, Suite 200A  
Seattle, WA 98104

Fire Protection Engineer  
**Jensen Hughes**  
One Research Drive, Suite 305C  
Westborough, MA 01581

Vertical Transportation Consultant  
**Lerch Bates**  
19515 North Creek Parkway, Suite 304  
Bothell, WA 98011

Structural Engineer  
Magnusson Klemencic Associates  
1301 5th Ave, Suite 3200  
Seattle, WA 98101

Lighting Designer  
O-  
1319 SE MLK Blvd, Suite 210  
Portland, Oregon 97219

**Building Envelope Consultant**  
**RDH**  
2101 N 34th St  
Seattle, WA 98103

Accessibility Consultant  
**Studio Pacifica**  
2144 Westlake Ave N, Suite F  
Seattle, WA 98109

**MEP Engineer**  
**WSP USA**  
1001 Fourth Ave., Suite 3100  
Seattle, WA 98154

principal architect	TK, KM
project manager	TM, JB, LB, MD
drawn by	SK, SS, JR, CP, A

checked by JB  
job no. 20062  
date 14 MAR 2020

revisions:

[illegible]

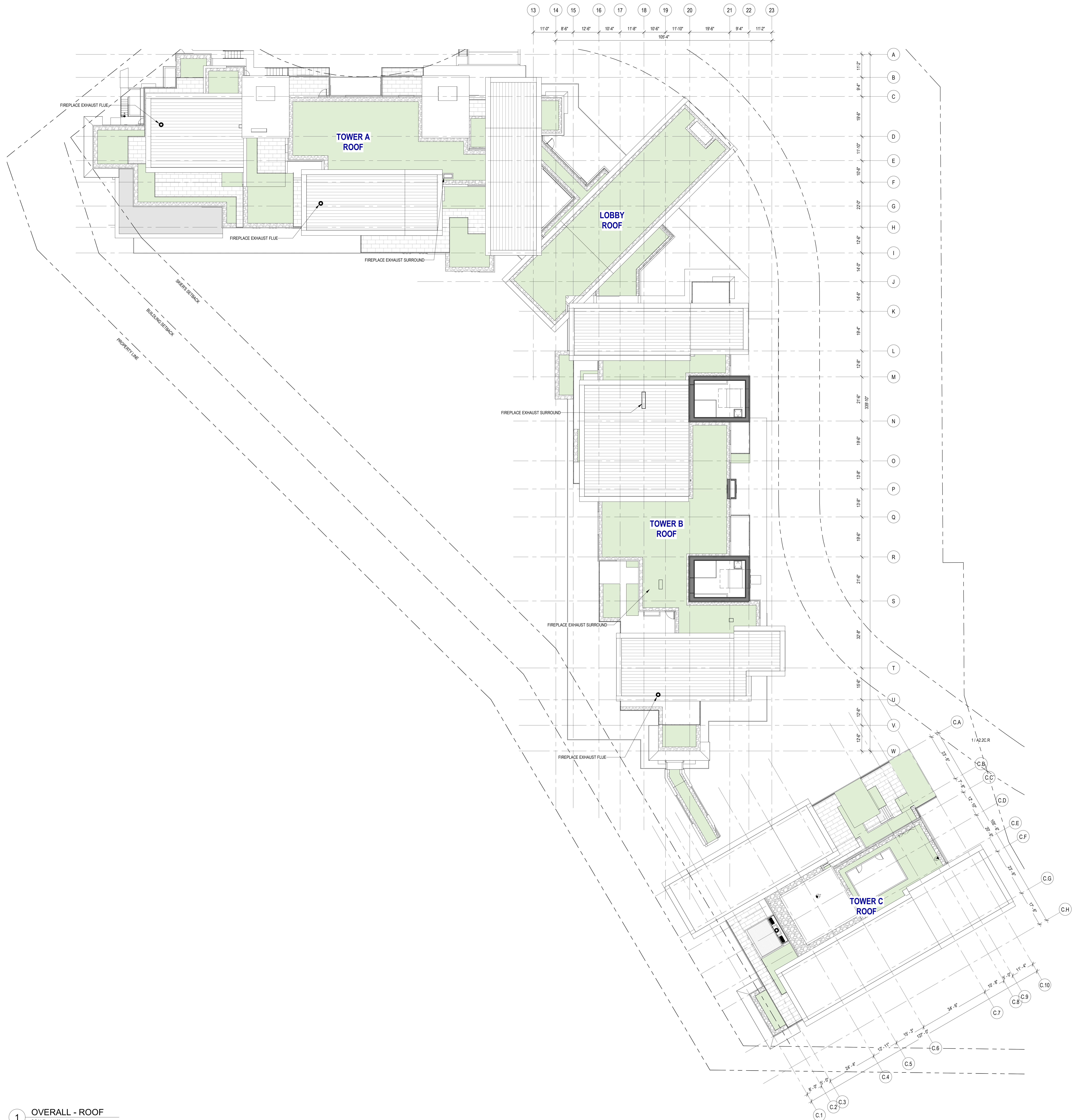
no.	date	by
-----	------	----

ISSUED FOR  
CONSTRUCTION  
11/18/2022

PLAN - OVERALL - ROOF  
- PH

A2.0.20





1 OVERALL - ROOF  
SCALE: 1/16" = 1'-0"

109 South Jackson St. Suite 600  
Seattle, Washington 98104 USA  
+1 206 424 0810 olsonkundig.com

Olson Kundig

SOMMET BLANC  
8300 MARSA C AVE  
PARK CITY, UT 84060



Aspen Group USA, LLC  
PO Box 980022  
Park City, Utah 84098

Pool Consultant  
Cloward H2O  
2696 N University Ave., Suite 200  
Provo, UT 84604

Landscape Architect  
EPG Design  
6940 South High Tech Drive, Suite 100  
Midvale, Utah 84047

Specifications Writer  
Friday Group  
88 Mainelli Road  
Middlebury, VT

Code Consultant  
Holmes  
600 1st Avenue, Suite 200A  
Seattle, WA 98104

Fire Protection Engineer  
Jensen Hughes  
One Research Drive, Suite 305C  
Westborough, MA 01581

Vertical Transportation Consultant  
Larch Bates  
19515 North Creek Parkway, Suite 304  
Bothell, WA 98011

Structural Engineer  
Magnusson Klemencic Associates  
1301 5th Ave., Suite 3200  
Seattle, WA 98101

Lighting Designer  
O  
319 SE MLK Blvd., Suite 210  
Portland, Oregon 97219

Building Envelope Consultant  
RDH  
2101 N 34th St  
Seattle, WA 98103

Accessibility Consultant  
Studio Pacifica  
2144 Westlake Ave N, Suite F  
Seattle, WA 98109

MEP Engineer  
WSP USA  
1001 Fourth Ave., Suite 3100  
Seattle, WA 98154

principal architect TK, KM  
project manager TM, JB, LB, MD  
drawn by SK, SS, JR, CP, AL  
NH, EK, BD, EB

checked by JB  
job no. 20552  
date 11/18/2022

revisions:

no. date by

ISSUED FOR  
CONSTRUCTION  
11/18/2022

PLAN - OVERALL - ROOF  
A2.0.R