



159 South Jackson St., Suite 600  
Seattle, Washington 98104 USA  
+1 206 624 5670 [olsonkundig.com](mailto:olsonkundig.com)

Olson Kundig

**SOMMET BLANC**  
9300 MARSAC AVE  
PARK CITY, UT 84060



**Aspen Group USA, LLC**  
PO Box 980022  
Park City, Utah 84098

Pool Consultant  
**Cloward H2O**  
2696 N University Ave, Suite 290  
Provo, UT 84604

**Landscape Architect**  
**EPG Design**  
6949 South High Tech Drive, Suite 100  
Midvale, Utah 84047

Specifications Writer  
**Friday Group**  
88 Mainelli Road  
Middlebury, VT

Code Consultant  
**Holmes**  
600 1st Avenue, Suite 200A  
Seattle, WA 98104

Fire Protection Engineer  
**Jensen Hughes**  
One Research Drive, Suite 305C  
Westborough, MA 01581

Vertical Transportation Consultant  
**Lerch Bates**  
19515 North Creek Parkway, Suite 304  
Bothell, WA 98011

Structural Engineer  
Magnusson Klemencic Associates  
1301 5th Ave, Suite 3200  
Seattle, WA 98101

Lighting Designer  
O-  
1319 SE MLK Blvd, Suite 210  
Portland, Oregon 97219

**Building Envelope Consultant**  
**RDH**  
2101 N 34th St  
Seattle, WA 98103

**Accessibility Consultant**  
**Studio Pacifica**  
2144 Westlake Ave N, Suite F  
Seattle, WA 98109

**MEP Engineer**  
**WSP USA**  
1001 Fourth Ave., Suite 3100  
Seattle, WA 98154

principal architect	TK, KM
project manager	TM, JB, LB, MD
drawn by	SK, SS, JR, CP, A NH, EK, BD, EB

checked by JB  
job no. 20062  
date 11/18/2022

Revisions:

---

---

---

---

---

---

---

---

---

---

---

---

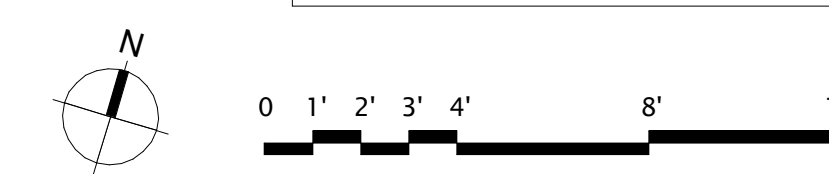
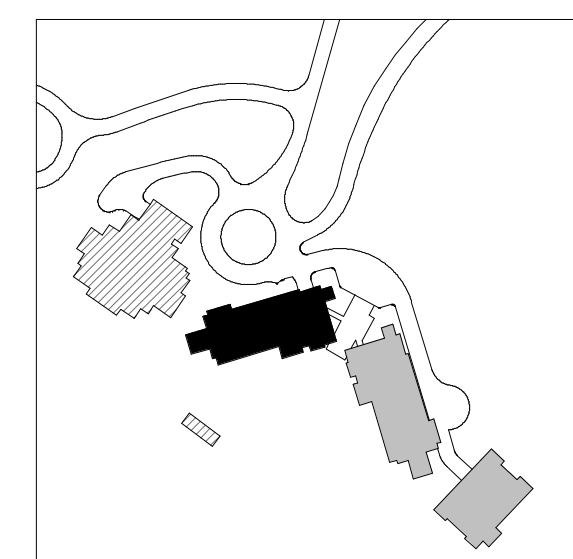
---

no.	date	by

ISSUED FOR  
CONSTRUCTION

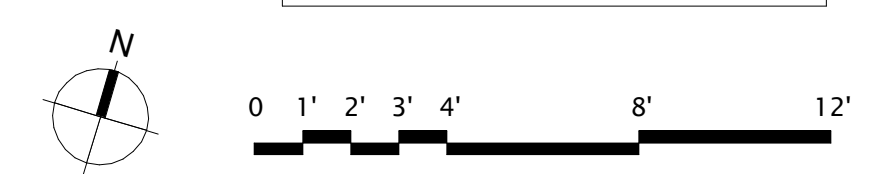
PLAN - TOWER A - LVL B  
- AREA A

A2.3A.01a



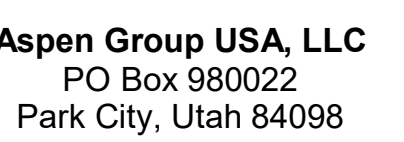


1. DIMENSIONS ARE TO FACE OF STUD OF EXTERIOR WALLS, CORRIDOR WALLS & INTERIOR WALLS. UNO
2. DIMENSIONS ARE TO CENTERLINE OF DEMISING WALLS. UNO
3. ALL EXPOSED STRUCTURAL STEEL TO RECEIVE 1 HR INTUMESCENT PAINTING
4. AT FRAMED EXTERIOR WALLS, FRAMING TO SET BACK 5" FROM FACE OF CONCRETE TO ALLOW FOR FLUSH ALIGNMENT OF SHEATHING. SEE DETAIL OF 5.6.8 UNO
5. CASEWORK DIMENSIONS ARE TO FACE OF FINISH. UNO
6. SEE SHEETS 40.10 AND 40.11 FOR ASSEMBLIES.
7. ALL CORRIDOR WALLS ARE TYPE E6. UNO
8. ALL DEMISING WALLS ARE TYPE J6. UNO
9. ALL INTERIOR PARTITIONS ARE TYPE A6. UNO
10. ALL FURRING ABOVE CONCRETE STRUCTURAL COLUMN WALLS TYPE G1. UNO
11. ALL VENT SHAFT WALLS ARE TYPE K4. UNO
12. REFER TO LIFE SAFETY PLANS A2.41-A2.44 FOR FULL EXTENT OF FIRE RATED WALLS
13. UNIT PLAN LAYOUTS ON SHEETS A2.44-A2.49
14. ALL EXPOSED HSS COLUMNS TO BE PAINTED WITH 1-HR OF INTUMESCENT PAINT. UNO
15. REFER TO SHEET A0.06 FOR ANSI TYPE A ACCESSIBILITY REQUIREMENTS.
16. REFER TO SHEET A0.07 FOR ANSI TYPE A ACCESSIBILITY REQUIREMENTS.
17. REFER TO SHEET A0.06 FOR ADA PUBLIC SPACE ACCESSIBILITY REQUIREMENTS



# Olson Kundig

SUMMER BLANC  
9300 MARSAC AVE  
PARK CITY, UT 84060



**PEP Engineer**  
**WSP USA**  
1001 Fourth Ave., Suite 3100  
Seattle, WA 98154

visions:

[illegible]

ISSUED FOR  
CONSTRUCTION  
11/18/2022

LAN - TOWER A - LVL B  
AREA B

A2.3A.01b







PLAN GENERAL NOTES

1. DIMENSIONS ARE TO FACE OF STUD OF EXTERIOR WALLS, CORRIDOR WALLS & INTERIOR WALLS, UNO.
2. DIMENSIONS ARE TO CENTERLINE OF DEMISING WALLS, UNO.
3. ALL EXPOSED STRUCTURAL STEEL TO RECEIVE 1 HR INTUMESCENT PAINTING
4. AT FRAMED EXTERIOR WALLS, FRAMING TO BE SET BACK 5/8" FROM FACE OF CONCRETE TO ALLOW FOR FLUSH ALIGNMENT OF SHEATHING TO EDGE OF SLAB UNO.
5. CASEWORK DIMENSIONS ARE TO FACE OF FINISH, UNO.
6. SEE SHEETS A0.10 AND A0.11 FOR ASSEMBLIES.
7. ALL CORRIDOR WALLS ARE TYPE E6, UNO.
8. ALL DEMISING WALLS ARE TYPE J6, UNO.
9. ALL INTERIOR PARTITIONS ARE TYPE A6, UNO.
10. ALL FURRING AROUND CONCRETE STRUCTURAL COLUMNS TYPE G1, UNO.
11. ALL VENT SHAFT WALLS ARE TYPE K4, UNO.
12. REFER TO LIFE SAFETY PLANS A0.30 - A0.34 FOR FULL EXTENT OF FIRE RATED WALLS.
13. UNIT PLAN LAYOUTS ON SHEETS A2.4A - A2.4R
14. ALL EXPOSED HSS COLUMNS TO BE PAINTED WITH 1-HR OF INTUMESCENT PAINT, UNO.
15. REFER TO SHEET A0.08 FOR ANSI TYPE B ACCESSIBILITY REQUIREMENTS.
16. REFER TO SHEET A0.07 FOR ANSI TYPE A ACCESSIBILITY REQUIREMENTS.
17. REFER TO SHEET A0.06 FOR ADA PUBLIC SPACE ACCESSIBILITY REQUIREMENTS

109 South Jackson St. Suite 600  
Seattle, Washington 98104 USA  
+1 206 424 1800  
olsonkundig.com

Olson Kundig

SOMMET BLANC  
9300 MARSHALL AVE  
PARK CITY, UT 84060



Aspen Group USA, LLC  
PO Box 980022  
Park City, Utah 84098

Pool Consultant  
Cloward H2O  
2696 N University Ave., Suite 250  
Provo, UT 84604

Landscape Architect  
EPG Design  
6040 South High Tech Drive, Suite 100  
Midvale, Utah 84047

Specifications Writer  
Friday Group  
85 Mainelli Road  
Middlebury, VT

Code Consultant  
Holmes  
600 1st Avenue, Suite 200A  
Seattle, WA 98104

Fire Protection Engineer  
Jensen Hughes  
One Research Drive, Suite 305C  
Westborough, MA 01581

Vertical Transportation Consultant  
Larch Bates  
1915 North Creek Parkway, Suite 304  
Bothell, WA 98011

Structural Engineer  
Magnusson Klemencic Associates  
1301 5th Ave, Suite 3200  
Seattle, WA 98101

Lighting Designer  
O  
319 SE MLK Blvd, Suite 210  
Portland, Oregon 97219

Building Envelope Consultant  
RDH  
2101 N 34th St  
Seattle, WA 98103

Accessibility Consultant  
Studio Pacifica  
2144 Westlake Ave N, Suite F  
Seattle, WA 98109

MEP Engineer  
WSP USA  
1001 Fourth Ave., Suite 3100  
Seattle, WA 98154

principal architect TK, KM  
project manager TM, JB, LS, MD  
drawn by SK, SS, JR, CP, AL  
checked by NH, EK, BD, EB

checked by JB  
job no. 2052  
date 11/18/2022

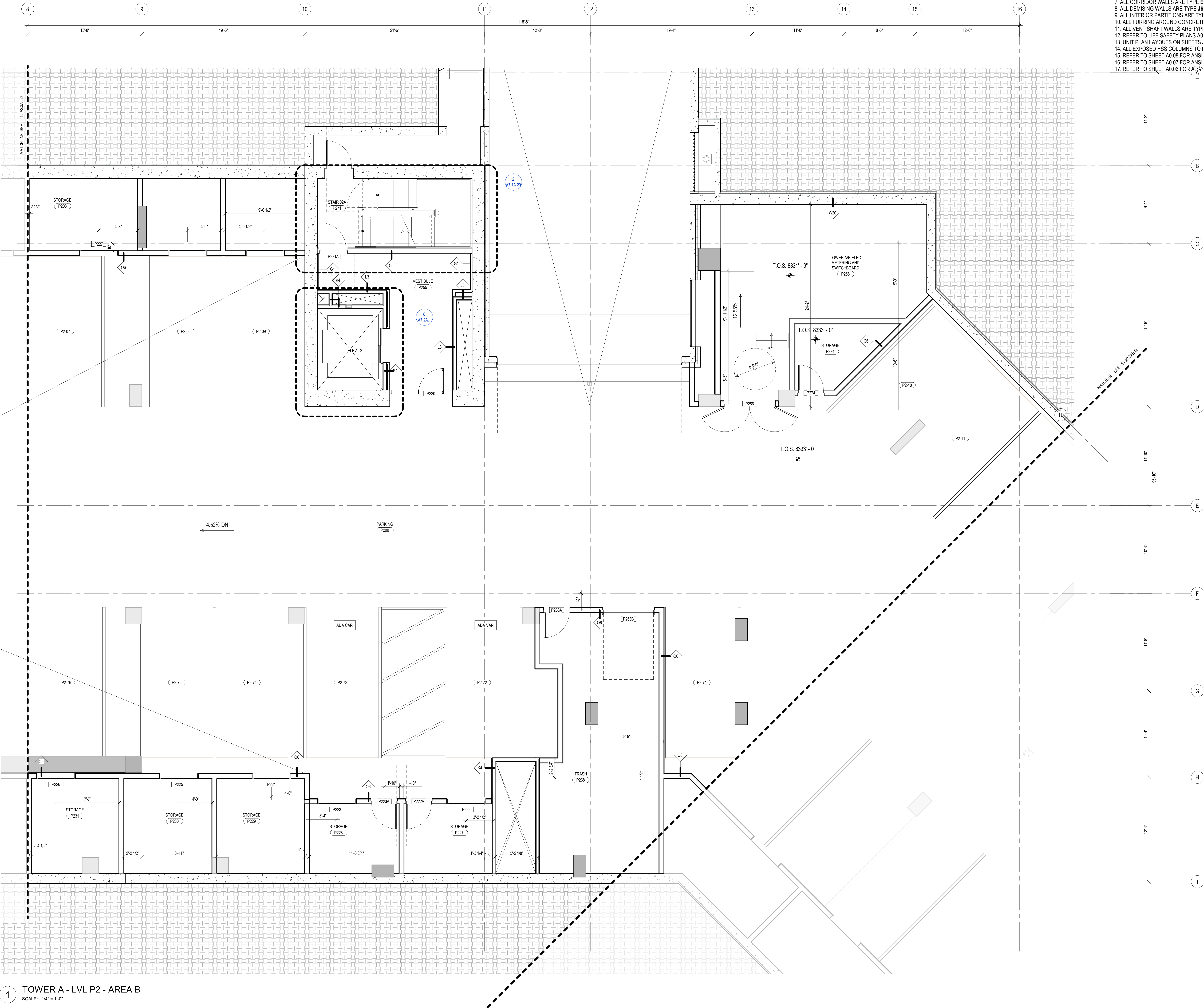
revisions:

no. date by

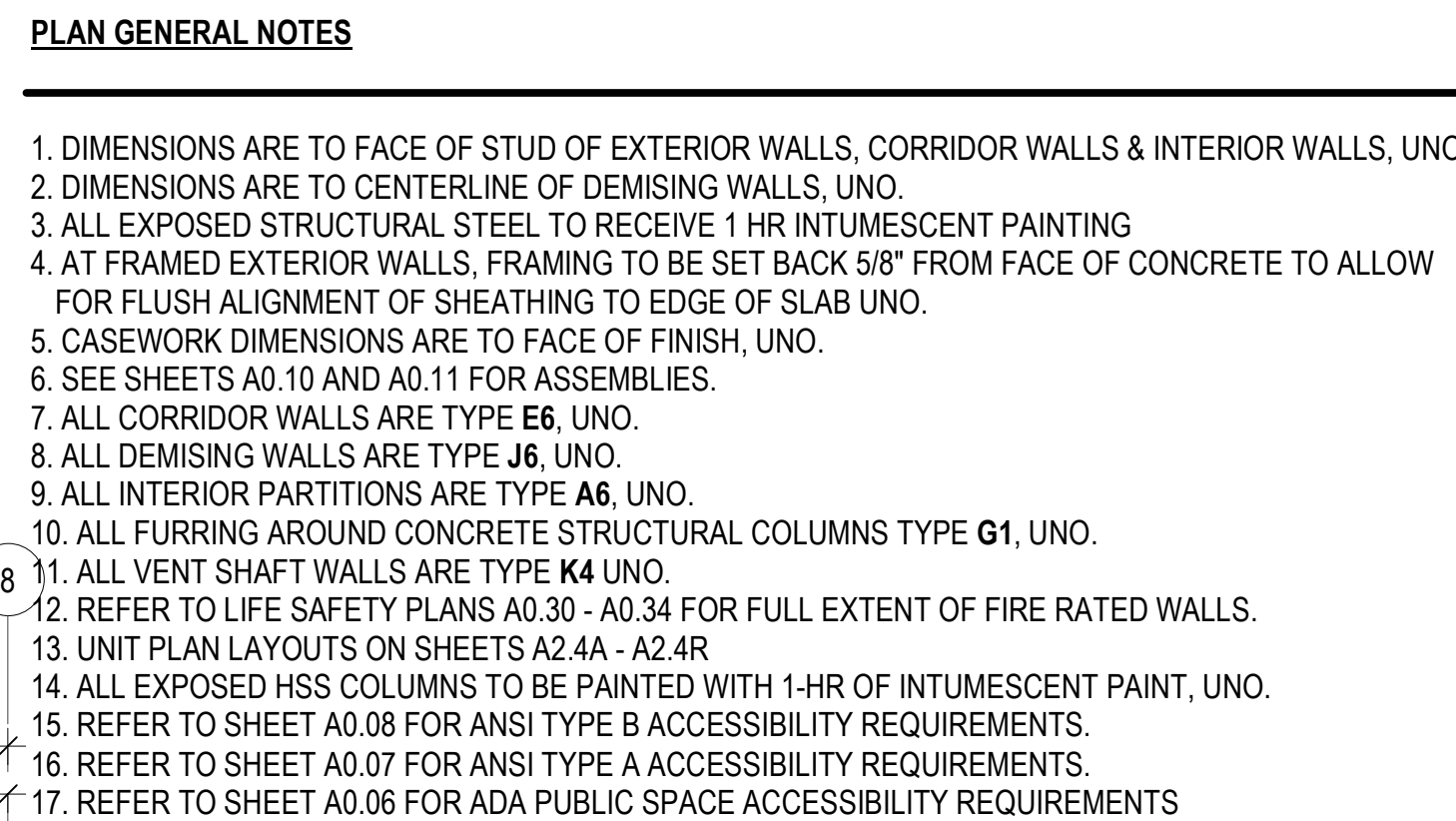
ISSUED FOR  
CONSTRUCTION  
11/18/2022

PLAN - TOWER A - LVL  
P2 - AREA B

A2.3A.02b

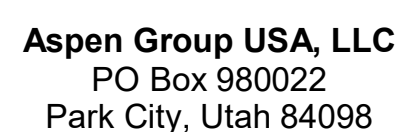






# Olson Kundig

SOMMET BLANC  
9300 MARSAC AVE  
DARK CITY, UT 84060

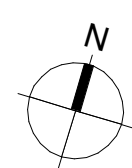


**MEP Engineer**  
**WSP USA**  
1001 Fourth Ave., Suite 3100  
Seattle, WA 98154

no.	date	by
1	1970	
2	1971	
3	1972	
4	1973	
5	1974	
6	1975	
7	1976	
8	1977	
9	1978	
10	1979	
11	1980	
12	1981	
13	1982	
14	1983	
15	1984	
16	1985	
17	1986	
18	1987	
19	1988	
20	1989	
21	1990	
22	1991	
23	1992	
24	1993	
25	1994	
26	1995	
27	1996	
28	1997	
29	1998	
30	1999	
31	2000	
32	2001	
33	2002	
34	2003	
35	2004	
36	2005	
37	2006	
38	2007	
39	2008	
40	2009	
41	2010	
42	2011	
43	2012	
44	2013	
45	2014	
46	2015	
47	2016	
48	2017	
49	2018	
50	2019	
51	2020	
52	2021	
53	2022	
54	2023	
55	2024	
56	2025	
57	2026	
58	2027	
59	2028	
60	2029	
61	2030	
62	2031	
63	2032	
64	2033	
65	2034	
66	2035	
67	2036	
68	2037	
69	2038	
70	2039	
71	2040	
72	2041	
73	2042	
74	2043	
75	2044	
76	2045	
77	2046	
78	2047	
79	2048	
80	2049	
81	2050	
82	2051	
83	2052	
84	2053	
85	2054	
86	2055	
87	2056	
88	2057	
89	2058	
90	2059	
91	2060	
92	2061	
93	2062	
94	2063	
95	2064	
96	2065	
97	2066	
98	2067	
99	2068	
100	2069	
101	2070	
102	2071	
103	2072	
104	2073	
105	2074	
106	2075	
107	2076	
108	2077	
109	2078	
110	2079	
111	2080	
112	2081	
113	2082	
114	2083	
115	2084	
116	2085	
117	2086	
118	2087	
119	2088	
120	2089	
121	2090	
122	2091	
123	2092	
124	2093	
125	2094	
126	2095	
127	2096	
128	2097	
129	2098	
130	2099	
131	2100	
132	2101	
133	2102	
134	2103	
1		

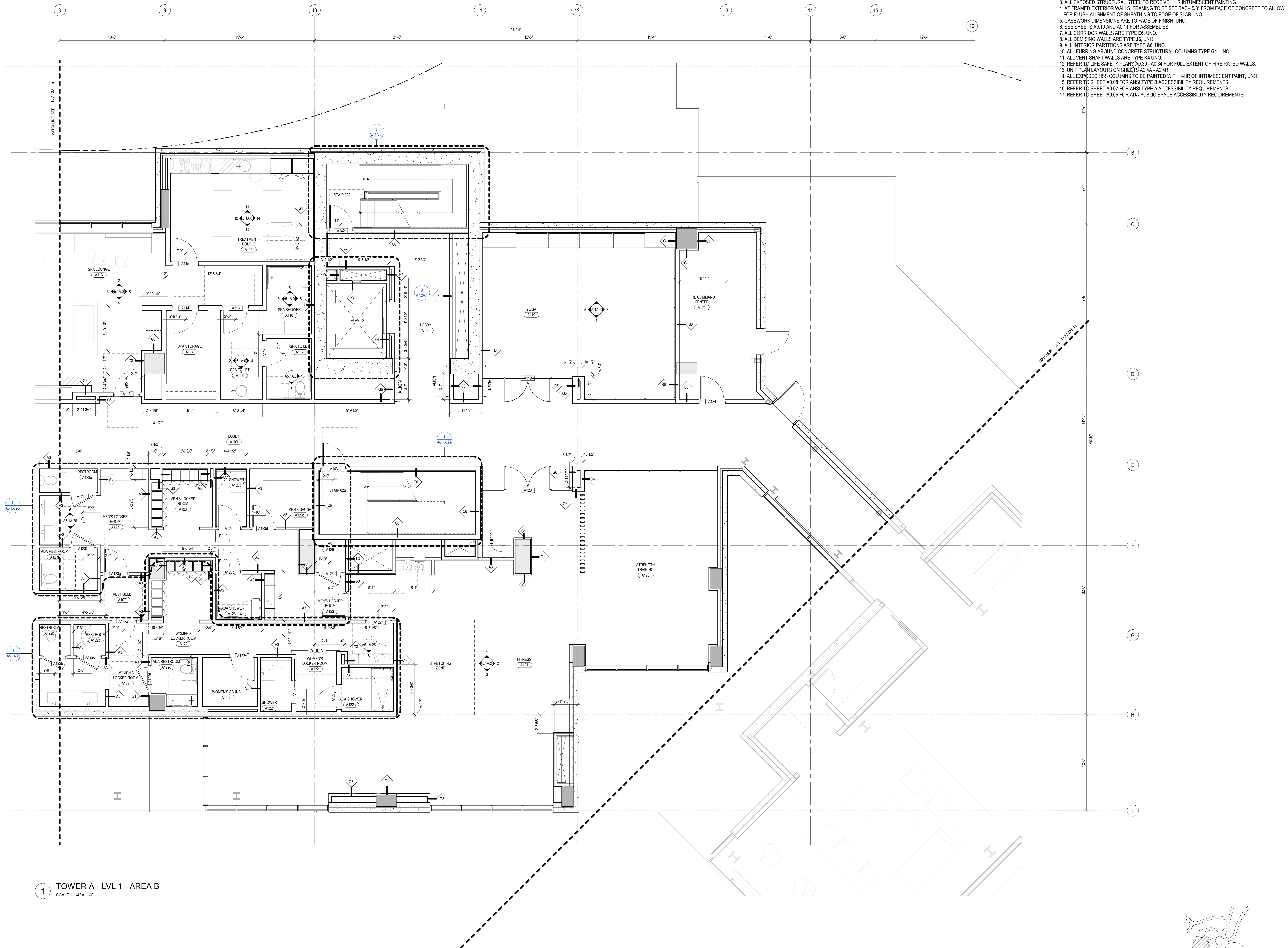
PLAN - TOWER A - LVL 1  
- AREA A

A2.3A.11a

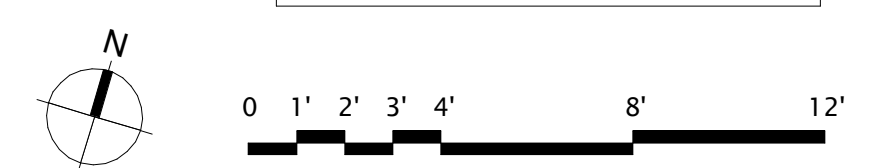


1 TOWER A - LVL 1 - AREA A  
SCALE: 1/4" = 1'-0"





1 TOWER A - LVL 1 - AREA B  
SCALE: 1/4" = 1'-0"





PLAN GENERAL NOTES

1. DIMENSIONS ARE TO FACE OF STUD OF EXTERIOR WALLS, CORRIDOR WALLS & INTERIOR WALLS, UNO.
2. DIMENSIONS ARE TO CENTERLINE OF DEMISING WALLS, UNO.
3. ALL EXPOSED STRUCTURAL STEEL TO RECEIVE 1 HR INTUMESCENT PAINTING
4. AT FRAMED EXTERIOR WALLS, FRAMING TO BE SET BACK 5/8" FROM FACE OF CONCRETE TO ALLOW FOR FLUSH ALIGNMENT OF SHEATHING TO EDGE OF SLAB UNO.
5. CASEWORK DIMENSIONS ARE TO FACE OF FINISH, UNO.
6. SEE SHEETS A0.10 AND A0.11 FOR ASSEMBLIES.
7. ALL CORRIDOR WALLS ARE TYPE E6, UNO.
8. ALL DEMISING WALLS ARE TYPE J6, UNO.
9. ALL INTERIOR PARTITIONS ARE TYPE A6, UNO.
10. ALL FURRING AROUND CONCRETE STRUCTURAL COLUMNS TYPE G1, UNO.
11. ALL VENT SHAFT WALLS ARE TYPE K4 UNO.
12. REFER TO LIFE SAFETY PLANS A0.30 - A0.34 FOR FULL EXTENT OF FIRE RATED WALLS.
13. UNIT PLAN LAYOUTS ON SHEETS A2.2A - A2.4R
14. ALL EXPOSED HSS COLUMNS TO BE PAINTED WITH 1-HR OF INTUMESCENT PAINT, UNO.
15. REFER TO SHEET A0.08 FOR ANSI TYPE B ACCESSIBILITY REQUIREMENTS.
16. REFER TO SHEET A0.07 FOR ANSI TYPE A ACCESSIBILITY REQUIREMENTS.
17. REFER TO SHEET A0.06 FOR ADA PUBLIC SPACE ACCESSIBILITY REQUIREMENTS

109 South Jackson St. Suite 600  
Seattle, Washington 98104 USA  
+1 206 324 1800 olsonkundig.com

Olson Kundig

SOMMET BLANC  
9300 MARSA C AVE  
PARK CITY, UT 84060



Aspen Group USA, LLC  
PO Box 980022  
Park City, Utah 84098

Pool Consultant  
Cloward & Co  
2696 N University Ave., Suite 290  
Provo, UT 84604

Landscape Architect  
EPG Design  
6940 South High Tech Drive, Suite 100  
Midvale, Utah 84047

Specifications Writer  
Friday Group  
88 Mainelli Road  
Middlebury, VT

Code Consultant  
Holmes  
600 1st Avenue, Suite 200A  
Seattle, WA 98104

Fire Protection Engineer  
Jensen Hughes  
One Research Drive, Suite 305C  
Westborough, MA 01581

Vertical Transportation Consultant  
Larch Bates  
19515 North Creek Parkway, Suite 304  
Bothell, WA 98011

Structural Engineer  
Magnusson Klemencic Associates  
1301 5th Ave, Suite 3200  
Seattle, WA 98101

Lighting Designer  
OS  
319 SE MLK Blvd, Suite 210  
Portland, Oregon 97219

Building Envelope Consultant  
RDH  
2101 N 34th St  
Seattle, WA 98103

Accessibility Consultant  
Studio Pacifica  
2144 Westlake Ave N, Suite F  
Seattle, WA 98109

MEP Engineer  
WSP USA  
1001 Fourth Ave., Suite 3100  
Seattle, WA 98154

principal architect TK, KM  
project manager TM, JB, LS, MD  
drawn by SK, SS, JR, CP, AL  
NH, EK, BD, EB

checked by JB  
job no. 2052  
date 11/18/2022

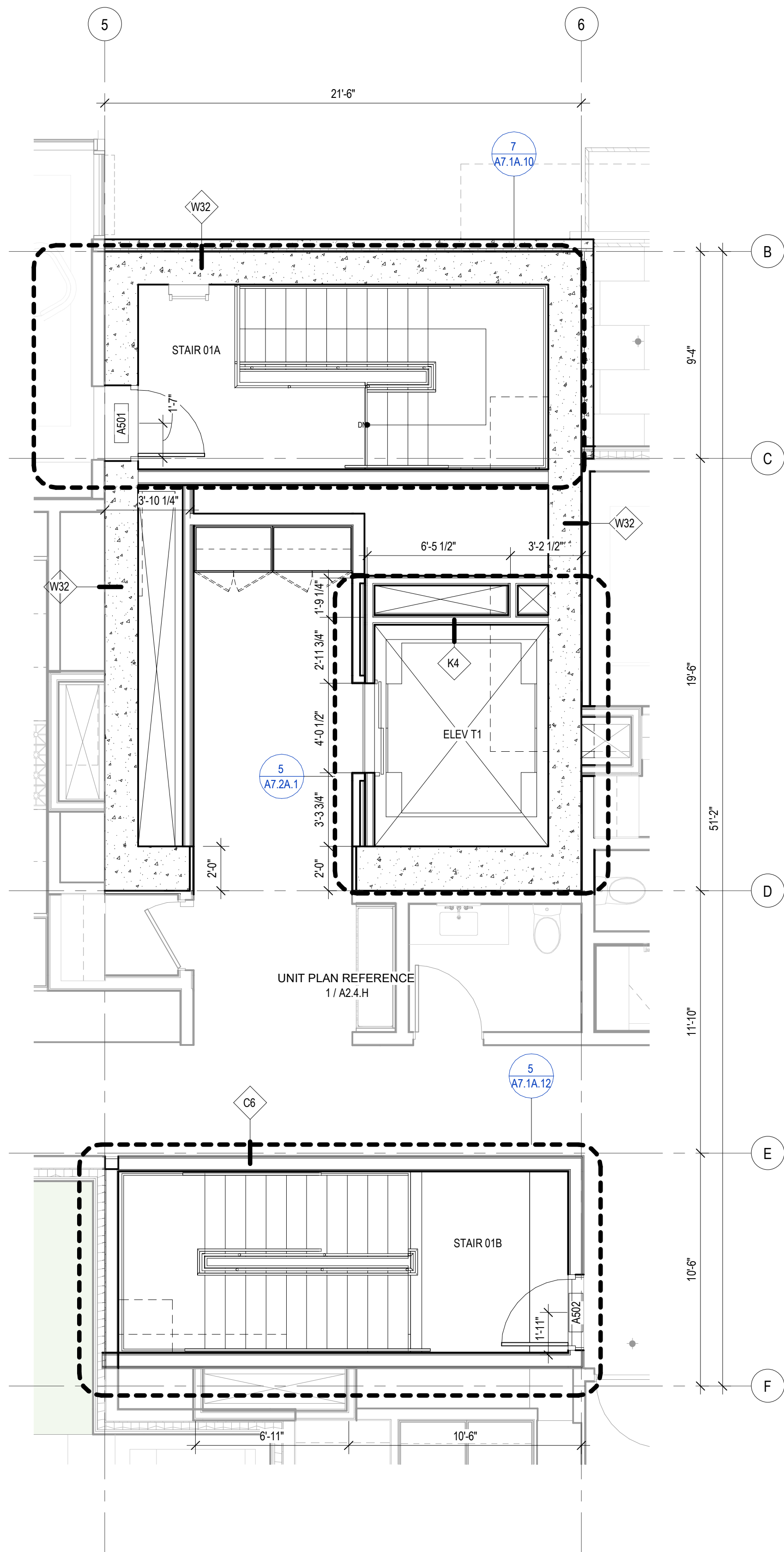
revisions:

no. date by

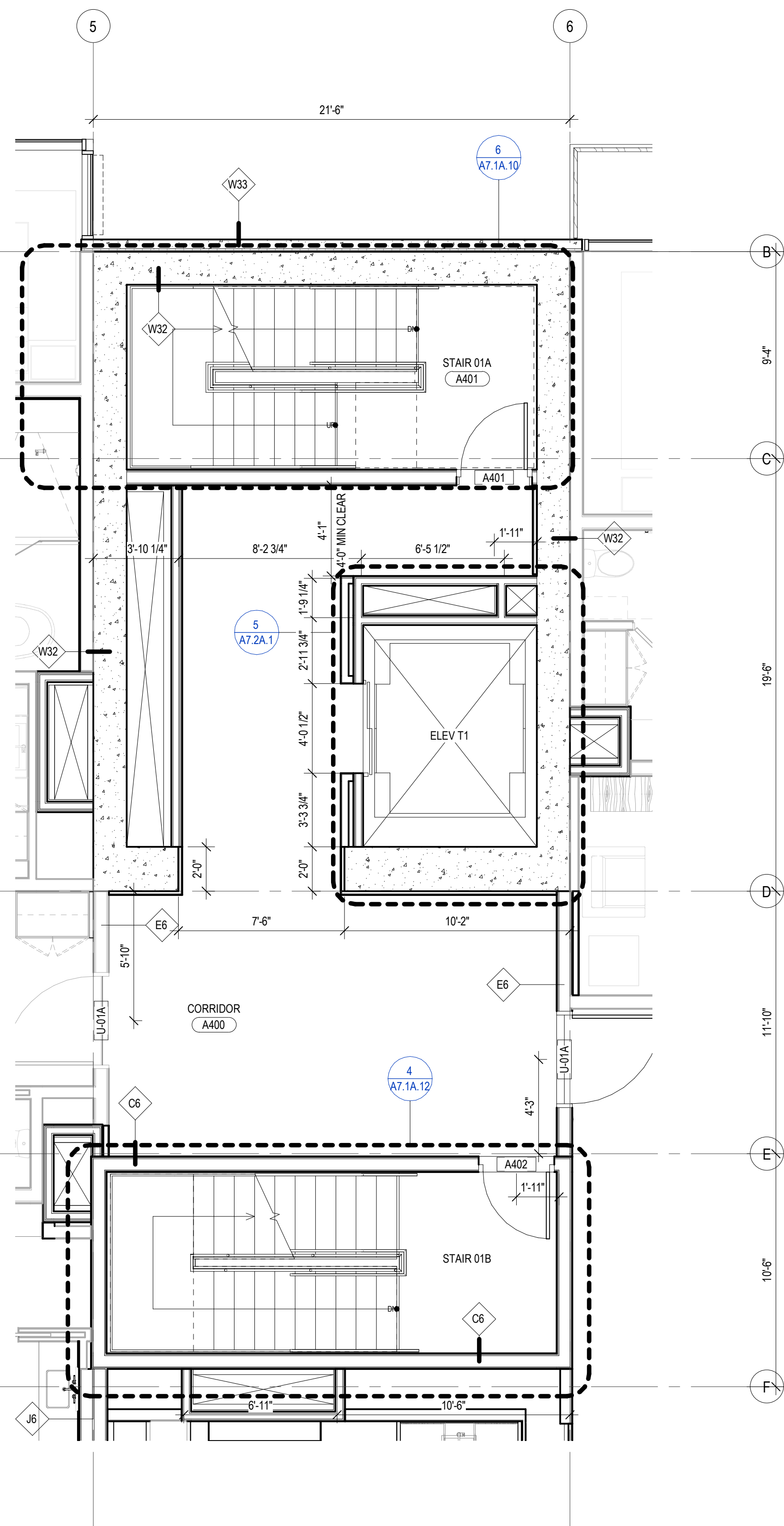
ISSUED FOR  
CONSTRUCTION  
11/18/2022

PLAN - TOWER A - CORE  
1

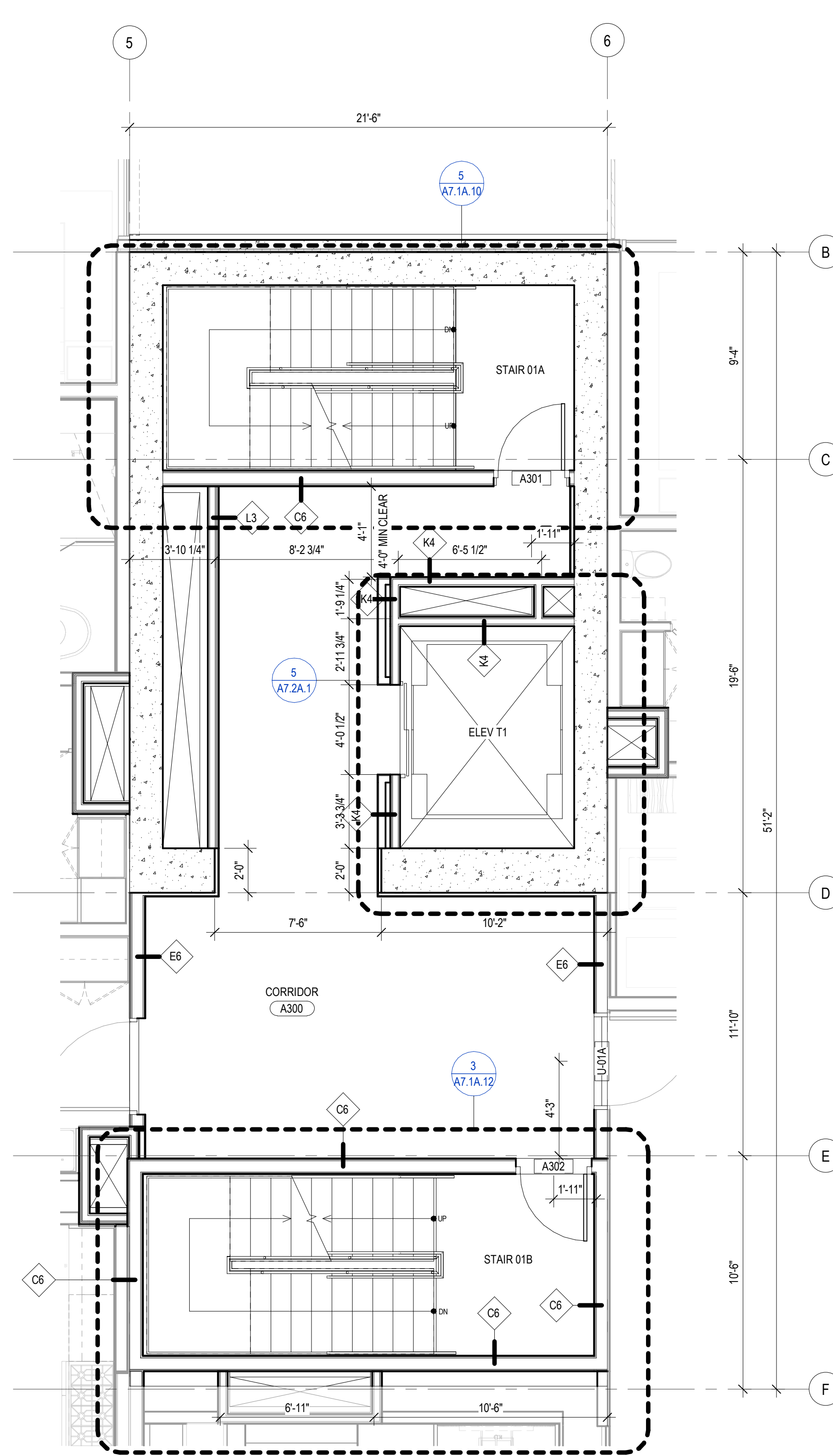
A2.3A.21



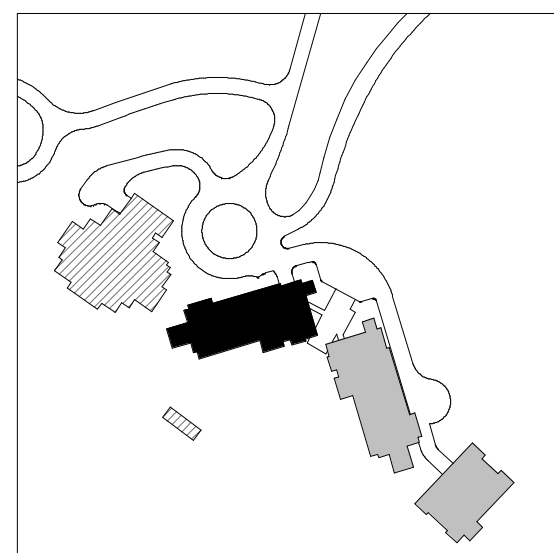
2 TOWER A - CORE 1 - LVL 5  
SCALE: 1/4" = 1'-0"



3 TOWER A - CORE 1 - LVL 4  
SCALE: 1/4" = 1'-0"

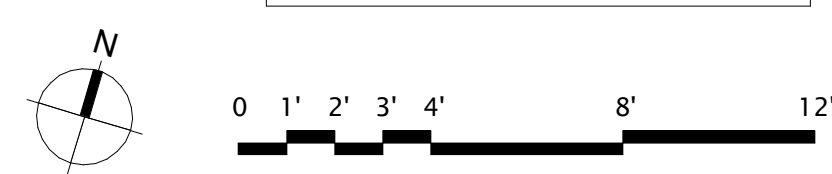
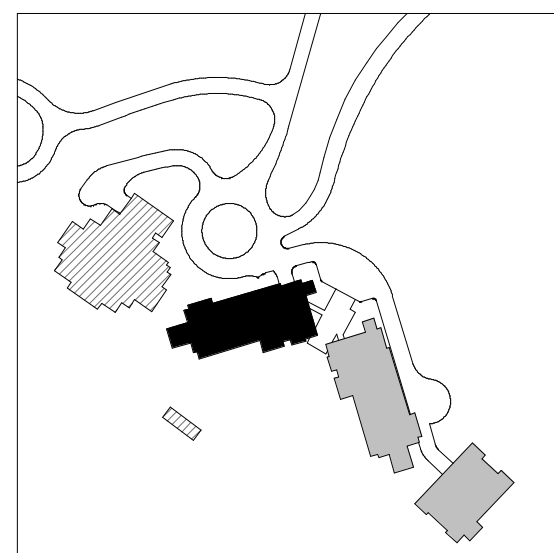
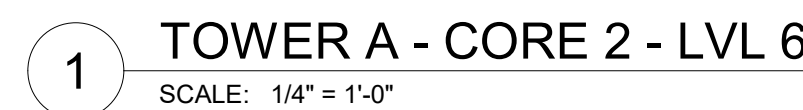


1 TOWER A - CORE 1 - LVL 2-3  
SCALE: 1/4" = 1'-0"





1. DIMENSIONS ARE TO FACE OF STUD OF EXTERIOR WALLS, CORRIDOR WALLS & INTERIOR WALLS. UNO
2. DIMENSIONS ARE TO CENTERLINE OF DEMISING WALLS. UNO
3. ALL EXPOSED STRUCTURAL STEEL TO RECEIVE 1 HR INTUMESCENT PAINTING
4. ALL FRAMED EXTERIOR WALLS TO BE SET BACK 505 FROM FACE OF CONCRETE TO ALLOW FOR FLUSH ALIGNMENT OF SHEATHING TO EDGE OF SLAB UNO
5. CASEWORK DIMENSIONS ARE TO FACE OF FINISH. UNO
6. SEE SHEETS A0.10 AND A0.11 FOR ASSEMBLIES.
7. ALL CORRIDOR WALLS ARE TYPE E6. UNO
8. ALL DEMISING WALLS ARE TYPE J6. UNO
9. ALL INTERIOR PARTITIONS ARE TYPE A6. UNO
10. ALL FURRING ABOVE CONCRETE STRUCTURAL COLUMNS TYPE G1. UNO
11. ALL VENT SHIRT WALLS ARE TYPE H4. UNO
12. REFER TO LIFE SAFETY PLAN A0.30, A0.31, A0.34 FOR FULL EXTENT OF FIRE RATED WALLS.
13. UNIT PLAN LAYOUTS ON SHEETS A2.14A - A2.14R
14. ALL EXPOSED HSS COLUMNS TO BE PAINTED WITH 1-HR OF INTUMESCENT PAINT. UNO
15. REFER TO SHEET A0.08 FOR ANSI TYPE A ACCESSIBILITY REQUIREMENTS.
16. REFER TO SHEET A0.07 FOR ANSI TYPE B ACCESSIBILITY REQUIREMENTS.
17. REFER TO SHEET A0.06 FOR ADA PUBLIC SPACE ACCESSIBILITY REQUIREMENTS



**Olson Kundig**  
159 South Jackson St. Suite 600  
Seattle, Washington 98104 USA  
+1 206 824 5670 [olsonkundig.com](http://olsonkundig.com)

SOMMET BLANC  
9300 MARSAC AVE  
PARK CITY, UT 84060



**Aspen Group USA, LLC**  
PO Box 980022  
Park City, Utah 84098

**Pool Consultant**  
**Cloward H2O**  
2896 N University Ave, Suite 290  
Provo, UT 84604

**Landscape Architect**  
**EPG Design**  
6949 South High Tech Drive, Suite 100  
Midvale, Utah 84047

Specifications Writer  
**Friday Group**  
88 Mainelli Road  
Middlebury, VT

Code Consultant  
**Holmes**  
600 1st Avenue, Suite 200A  
Seattle, WA 98104

**Fire Protection Engineer**  
**Jensen Hughes**  
One Research Drive, Suite 305C  
Westborough, MA 01581

**Vertical Transportation Consultant**  
**Lerch Bates**  
19515 North Creek Parkway, Suite 300  
Bothell, WA 98011

Structural Engineer  
**Magnusson Klemencic Associates**  
1301 5th Ave, Suite 3200  
Seattle, WA 98101

**Lighting Designer**  
**O-**  
 1319 SE MLK Blvd, Suite 210  
 Portland, Oregon 97219

**Building Envelope Consultant**  
**RDH**  
2101 N 34th St  
Seattle, WA 98103

**Accessibility Consultant**  
**Studio Pacifica**  
2144 Westlake Ave N, Suite F  
Seattle, WA 98109

**MEP Engineer**  
**WSP USA**  
1001 Fourth Ave., Suite 3100  
Seattle, WA 98154

principal architect TK, KM  
project manager TM, JB, LB, MD  
drawn by SK, SS, JR, CP,  
NH, EK, BD, EB

checked by JB  
job no. 20052  
date 11/18/2022

revisions:

[illegible]

no.	date	t
-----	------	---

ISSUED FOR  
CONSTRUCTION  
11/18/2022

PLAN - TOWER A - CORE  
2

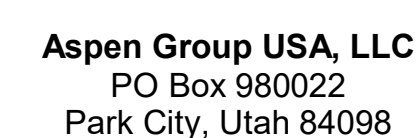
A2.3A.22



1. DIMENSIONS ARE TO FACE OF STUD OF EXTERIOR WALLS, CORRIDOR WALLS & INTERIOR WALLS, UNO
2. DIMENSIONS ARE TO CENTERLINE OF DEMISING WALLS, UNO
3. ALL EXPOSED STRUCTURAL STEEL TO RECEIVE 1 HR INTUMESCENT PAINTING
4. AT FRAMED EXTERIOR WALLS, FRAMING TO BE SET BACK 3/8" FROM FACE OF CONCRETE TO ALLOW FOR FLUSH ALIGNMENT OF SHEATHING, UNO
5. ALL DIMENSIONS TO FACE OF SLAB, UNO
6. CASEWORK DIMENSIONS ARE TO FACE OF FINISH, UNO
7. SEE SHEETS A0.10 AND A0.11 FOR ASSEMBLIES.
7. ALL CORRIDOR WALLS ARE TYPE E6, UNO.
8. ALL DEMISING WALLS ARE TYPE E6, UNO
9. ALL INTERIOR PARTITIONS ARE TYPE A6, UNO
10. ALL FURRING ABOVE CONCRETE STRUCTURAL COLUMNS TYPE G1, UNO.
11. ALL VENT SHAFT WALLS ARE TYPE K4, UNO
12. REFER TO LIFE SAFETY PLAN A0.04 FOR FULL EXTENT OF FIRE RATED WALLS
13. UNIT PLAN LAYOUTS ON SHEETS A2.44 - A2.4R
14. ALL EXPOSED HSS COLUMNS TO BE PAINTED WITH 1-HR OF INTUMESCENT PAINT, UNO.
15. REFER TO SHEET A0.08 FOR ANS1 TYPE B ACCESSIBILITY REQUIREMENTS.
16. REFER TO SHEET A0.07 FOR ANS1 TYPE C ACCESSIBILITY REQUIREMENTS
17. REFER TO SHEET A0.06 FOR ADA PUBLIC SPACE ACCESSIBILITY REQUIREMENTS

# Olson Kundig

SOMMET BLANC  
9300 MARSAC AVE  
PARK CITY, UT 84060

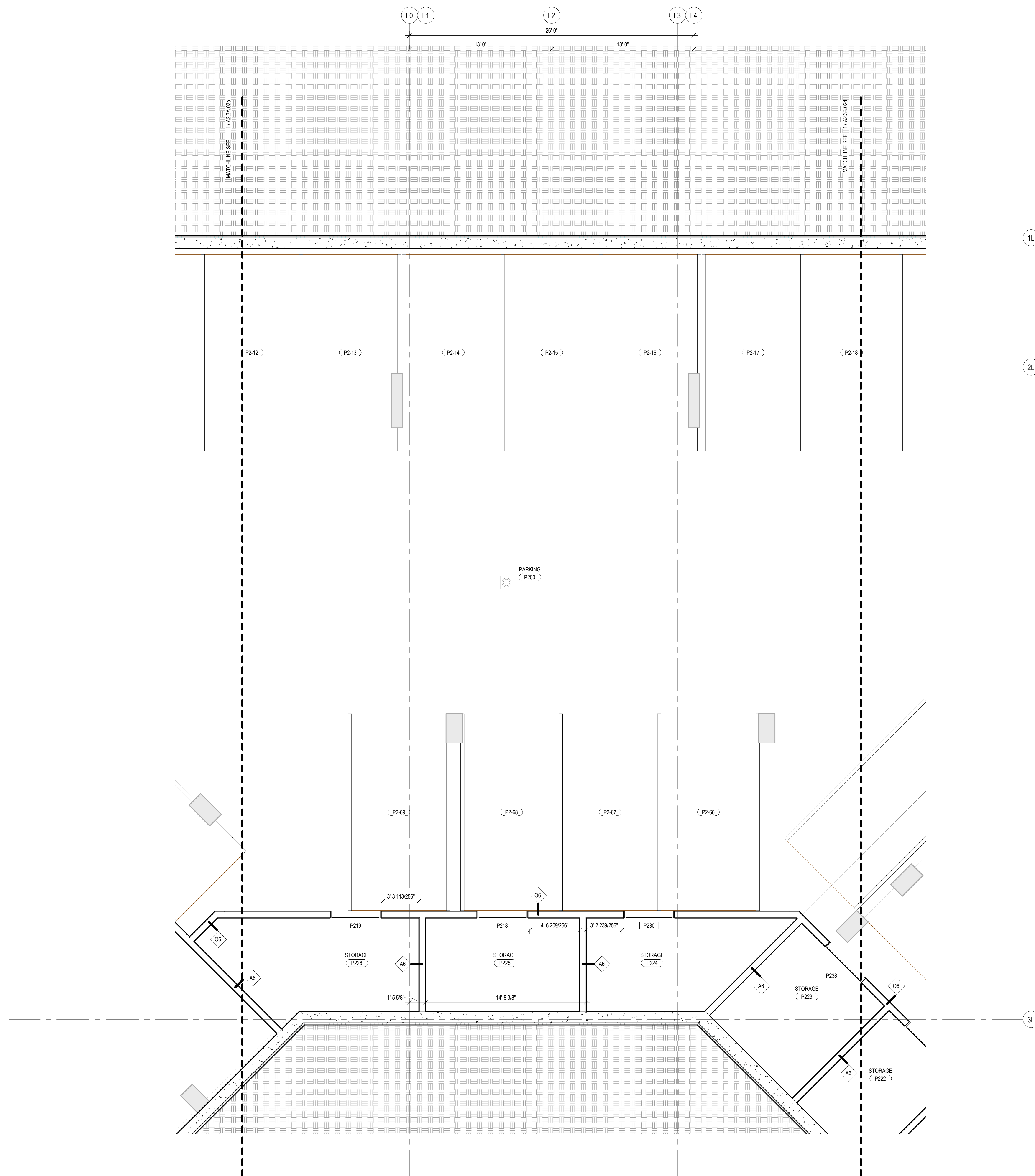


no.	date	by
-----	------	----

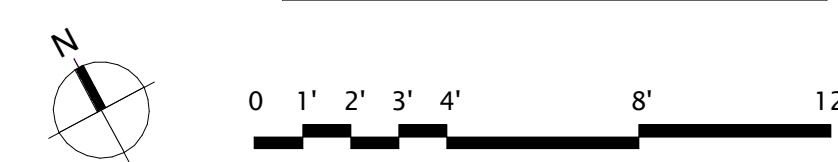
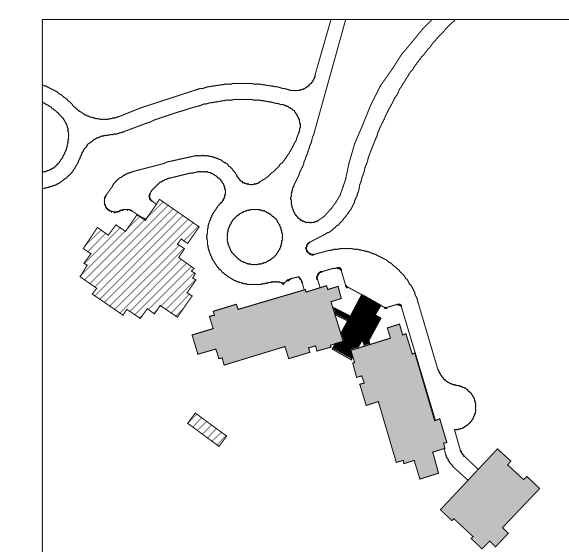
ISSUED FOR  
CONSTRUCTION  
11/18/2022

PLAN - LOBBY - LVL P2 -  
AREA C

A2.3AB.0c



1 LOBBY - LVL P2 - AREA C  
SCALE: 1/4" = 1'-0"

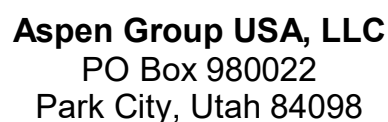




1. DIMENSIONS ARE TO FACE OF STUD OF EXTERIOR WALLS, CORRIDOR WALLS & INTERIOR WALLS. UNO
2. DIMENSIONS ARE TO CENTERLINE OF DEMISING WALLS. UNO
3. ALL EXPOSED STRUCTURAL STEEL TO RECEIVE 1 HR INTUMESCENT PAINTING
4. ALL FRAMED EXTERIOR WALLS TO BE SET BACK 505 FROM FACE OF CONCRETE TO ALLOW FOR FLUSH ALIGNMENT OF SHEATHING TO EDGE OF SLAB UNO
5. CASEWORK DIMENSIONS ARE TO FACE OF FINISH. UNO
6. SEE SHEETS AO.10 AND AO.11 FOR ASSEMBLIES.
7. ALL CORRIDOR WALLS ARE TYPE ES. UNO
8. ALL DEMISING WALLS ARE TYPE JB. UNO
9. ALL INTERIOR PARTITIONS ARE TYPE A6. UNO
10. ALL FURRING ABOVE CONCRETE STRUCTURAL COLUMNS TYPE G1. UNO
11. ALL VENT SHIRT WALLS ARE TYPE M4. UNO
12. REFER TO LIFE SAFETY PLAN AO.30, AO.31, AO.34 FOR FULL EXTENT OF FIRE RATED WALLS.
13. UNIT PLAN LAYOUTS ON SHEETS A2.4A - A2.4R
14. ALL EXPOSED HSS COLUMNS TO BE PAINTED WITH 1-HR OF INTUMESCENT PAINT. UNO
15. REFER TO SHEET AO.08 FOR ANSI TYPE A ACCESSIBILITY REQUIREMENTS.
16. REFER TO SHEET AO.07 FOR ANSI TYPE A ACCESSIBILITY REQUIREMENTS
17. REFER TO SHEET AO.06 FOR ADA PUBLIC SPACE ACCESSIBILITY REQUIREMENTS

# Olson Kundig

SOMMET BLANC  
9300 MARSAC AVE  
PARK CITY, UT 84060



**MEP Engineer**  
**WSP USA**  
1001 Fourth Ave., Suite 3100  
Seattle, WA 98154

no.	date	by
-----	------	----

PLAN - LOBBY - LVL 1 -  
AREA C

A2.3AB.1c

