

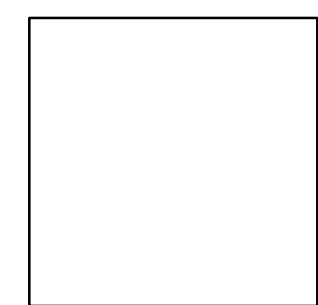


Reserved for permit stamp

159 South Jackson St, Suite 600
Seattle, Washington 98104 USA
+1 206 624 5670 olsonbundig.com

Olson Kundig

project: **SOMMET BLANC RESIDENCE 1**



White Summit Development, LLC
PO Box 980022
Park City, Utah 84098

Acoustic Consultant
BRC Acoustics
1932 1st Ave, Suite 620
Seattle, WA 98101

Pool Consultant
Cloward H2O
2696 N University Ave, Suite 290
Provo, UT 84604

Landscape Architect
EPG Design
6949 South High Tech Drive, Suite 100
Midvale, Utah 84047

Specifications Writer
Friday Group
88 Mainelli Road
Middlebury, VT

Code Consultant
Holmes
600 1st Avenue, Suite 200A
Seattle, WA 98104

Fire Protection Engineer
Jensen Hughes
One Research Drive, Suite 3050
Westborough, MA 01581

Vertical Transportation Consultant
Lerch Bates
19515 North Creek Parkway, Suite 304
Bothell, WA 98011

Structural Engineer
Magnusson Klemencic Associates
1301 5th Ave, Suite 3200
Seattle, WA 98101

Lighting Designer
O-
1319 SE MLK Blvd, Suite 210
Portland, Oregon 97219

Building Envelope Consultant
RDH
2101 N 34th St
Seattle, WA 98103

Accessibility Consultant
Studio Pacifica
2144 Westlake Ave N, Suite F
Seattle, WA 98109

MEP Engineer
WSP USA
1001 Fourth Ave., Suite 3100
Seattle, WA 98154

principal architect David Harris
project manager Grant Hardy
drawn by Grant Hardy

checked by Checker
job no. 20052
date November 18, 2002

revisions:

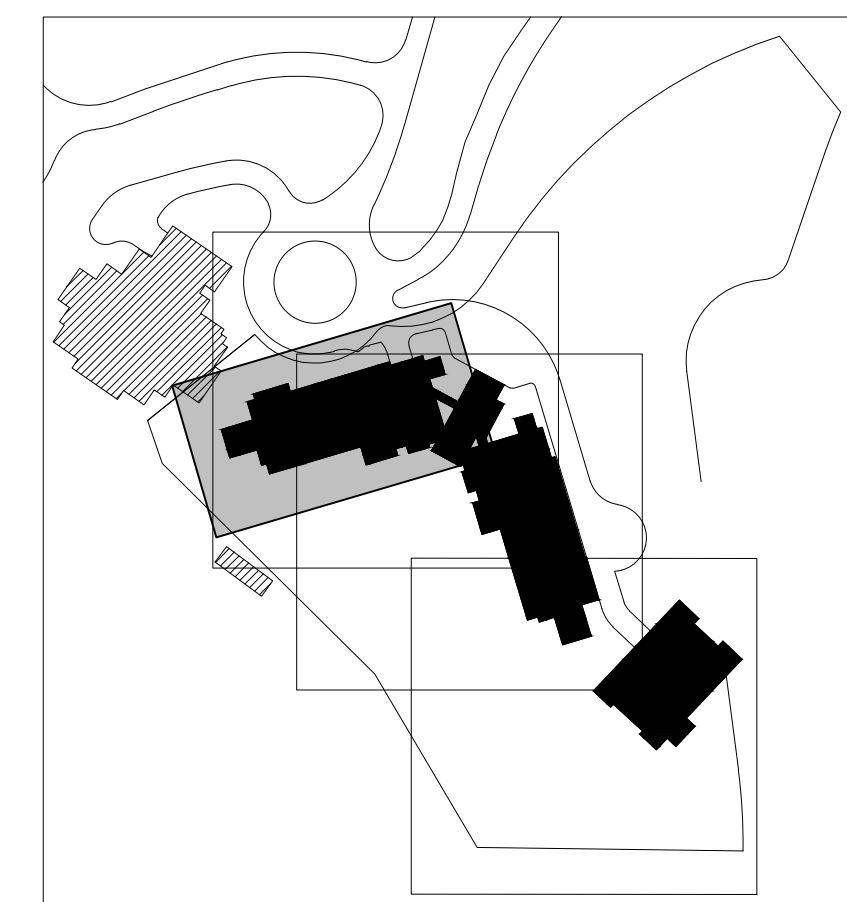
[illegible]

no.	date	by
-----	------	----

PERMIT SET

NOVEMBER 18, 2022

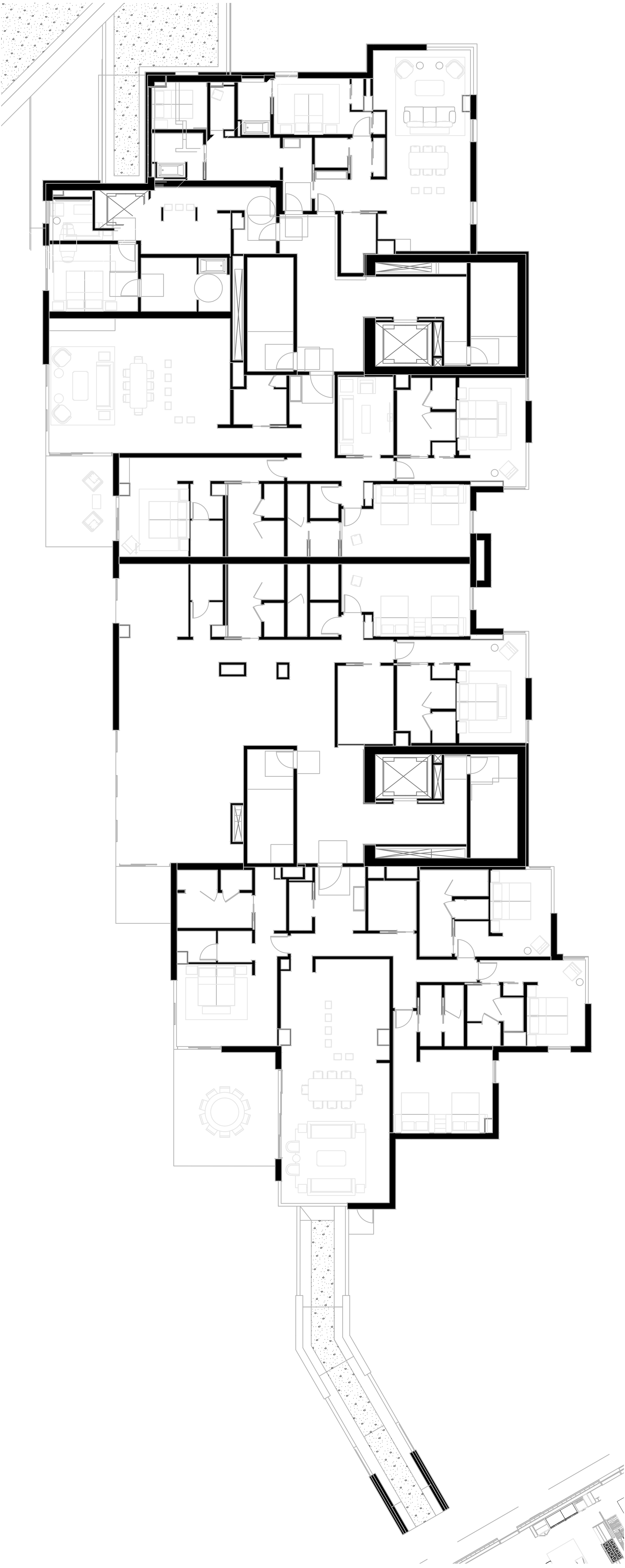
BUILDING A
ROOF PLANTING PLAN
L504


$$1^\circ = 10^{-9}$$

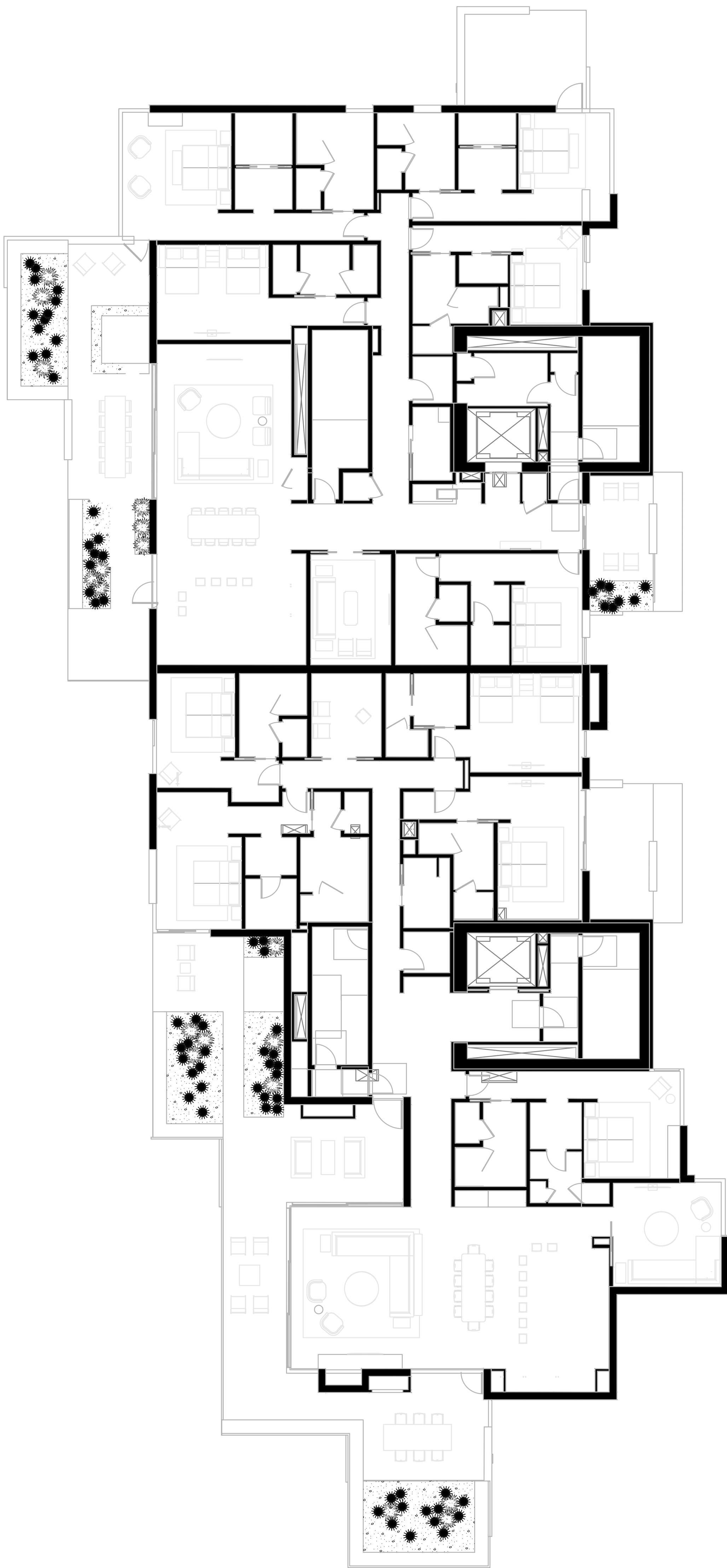
DISCLAIMER:
THE DESIGNS SHOWN AND DESCRIBED HEREIN (INCLUDING ALL TECHNICAL DRAWINGS, GRAPHIC REPRESENTATIONS, AND MODELS THEREOF) ARE PROPRIETARY AND CAN NOT BE COPIED, DUPLICATED, OR COMMERCIALY EXPLOITED IN WHOLE OR IN PART WITHOUT THE SOLE AND EXPRESS WRITTEN PERMISSION FROM ENVIRONMENTAL PLANNING GROUP GROUP (EPG).

ENVIRONMENTAL PLANNING GROUP GROUP (EPG) PROVIDED QUANTITIES ARE CALCULATED BASED ON THE 3D MODEL PROGRESS. CONTRACTORS ARE RESPONSIBLE FOR REVIEWING THE DESIGN AND PROVIDING THEIR OWN CALCULATIONS AND AREAS FOR THE PURPOSES OF COST ESTIMATING / BIDDING.

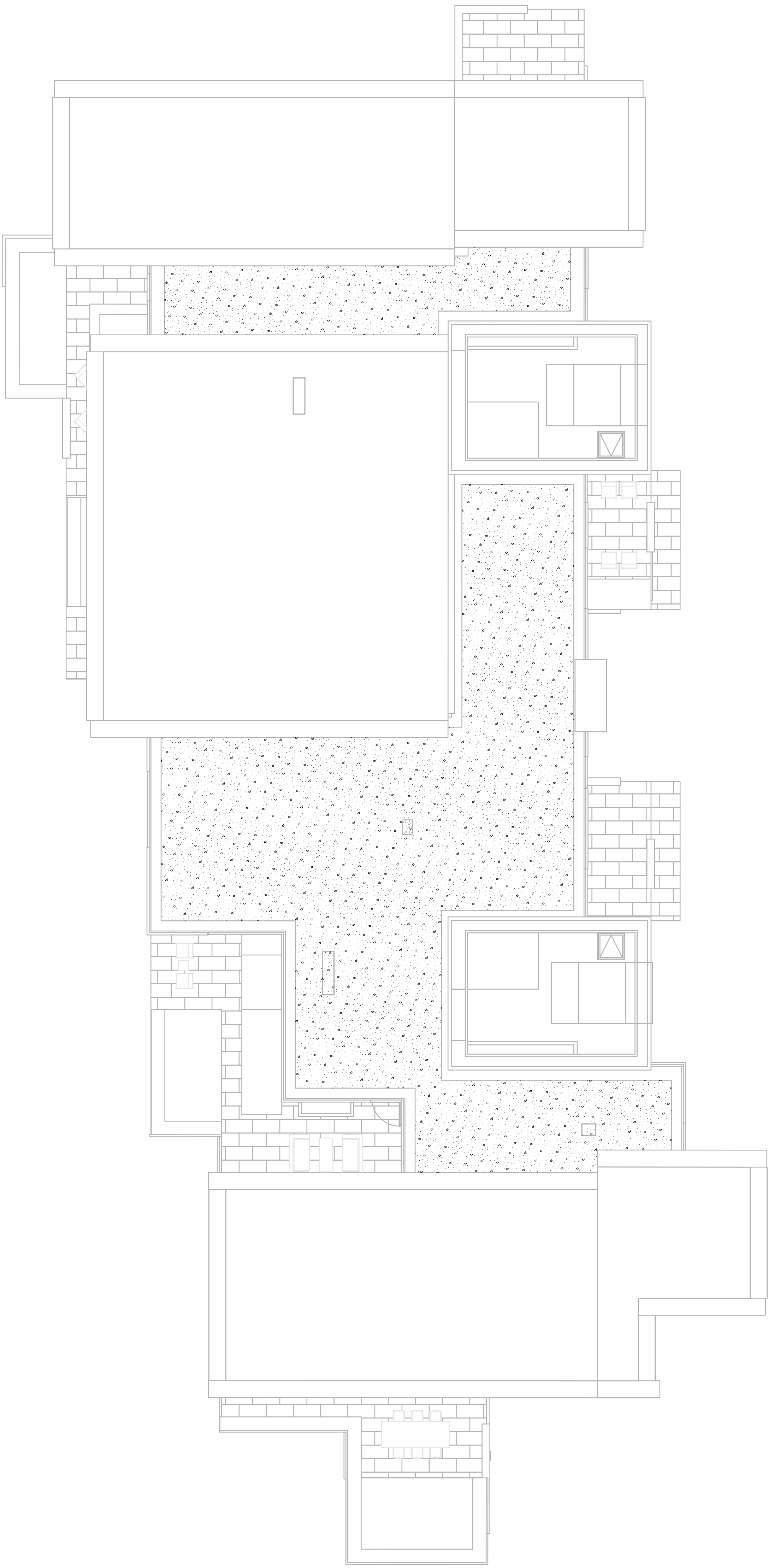
THE CLIENT, AND/OR THE CLIENT'S CONTRACTOR, IS RESPONSIBLE FOR OBTAINING OR PROVIDING THE NECESSARY CONSTRUCTION PERMIT FOR CITY CODE COMPLIANCE.




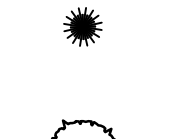
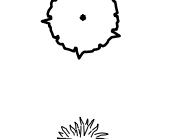

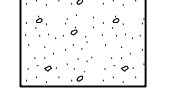
1 BUILDING B - FLOOR 3
1" = 10'-0"



2 BUILDING B - FLOOR 8
1" = 10'-0"



3 BUILDING B - FLOOR 8
1" = 10'-0"

PLANT SCHEDULE			
TREES	QTY	COMMON / BOTANICAL NAME	SIZE
	6	JAPANESE MAPLE ACER PALMATUM	4" CAL
SHRUBS	QTY	COMMON / BOTANICAL NAME	SIZE
	305	BLUE GRAMA GRASS BOULELOUA GRACILIS	1 GAL
	37	GRO-LOW FRAGRANT SUMAC RHUS AROMATICA 'GRO-LOW'	5 GAL
	93	HAMELN FOUNTAIN GRASS PENNISETUM ALOPECUROIDES 'HAMELN'	1 GAL
GROUND COVERS	QTY	COMMON / BOTANICAL NAME	SIZE
	15,555 SF	BIONATIVE SOD	SOD



DISCLAIMER:
THE DESIGN SHOWN AND DESCRIBED HEREIN, INCLUDING ALL TECHNICAL DRAWINGS, GRAPHIC REPRESENTATIONS, AND MODELS THEREOF, ARE PRELIMINARY AND CAN NOT BE COPIED, REPRODUCED, OR COMMERCIALY EXPLOITED IN WHOLE OR IN PART WITHOUT THE SOLE AND EXPRESS WRITTEN PERMISSION FROM ENVIRONMENTAL PLANNING GROUP (EPG).
ENVIRONMENTAL PLANNING GROUP (EPG) PROVIDED QUANTITIES ARE CALCULATED BASED ON THE 3D MODEL PROVIDED. CONTRACTORS ARE RESPONSIBLE FOR REVIEWING THE DESIGN AND PROVIDING THEIR OWN CALCULATIONS AND AREAS FOR THE PURPOSES OF COST ESTIMATING. EPG'S.
THE CLIENT, AND/OR THE CLIENT'S CONTRACTOR, IS RESPONSIBLE FOR OBTAINING OR PROVIDING THE NECESSARY CONSTRUCTION PERMIT FOR CITY CODE COMPLIANCE.

193 South Jackson St, Suite 600
Salt Lake City, UT 84143 USA
+1 202 644 2070 olsonkundig.com

Olson Kundig

project

SOMMET BLANC RESIDENCE 1

ADDRESS

PARK CITY, UT

White Summit Development, LLC
PO Box 980022
Park City, Utah 84098

Acoustic Consultant
BRC Acoustics
1932 1st Ave, Suite 620
Seattle, WA 98101
Pool Consultant
Cloward 100
2606 N University Ave, Suite 290
Provo, UT 84604
Landscape Architect
EPG Design
6948 South High Tech Drive, Suite 100
Midvale, Utah 84047
Specifications Writer
Friday Group
88 Mainell Road
Middlebury, VT
Code Consultant
Holmes
600 1st Avenue, Suite 200A
Seattle, WA 98104
Fire Protection Engineer
Jensen Hughes
One Research Drive, Suite 305C
Westborough, MA 01581
Vertical Transportation Consultant
Larch Bates
15515 North Creek Parkway, Suite 304
Bothell, WA 98011
Structural Engineer
Magnusson Klemencic Associates
1301 5th Ave, Suite 3200
Seattle, WA 98101
Lighting Designer
O
1319 SE MLK Blvd, Suite 210
Portland, Oregon 97219
Building Envelope Consultant
RDH
2101 N 34th St
Seattle, WA 98103
Accessibility Consultant
Studio Pacifica
2144 Westlake Ave N, Suite F
Seattle, WA 98109
MEP Engineer
WSP USA
1001 Fourth Ave, Suite 3100
Seattle, WA 98154

principal architect...David Harris

project manager...Grant Hardy

drawn by...Grant Hardy

checked by...Chadler

job no. 20952

date November 18, 2022

revisions:

no. date by

PERMIT SET

NOVEMBER 18, 2022

BUILDING B
ROOF PLANTING PLAN
L505

