



6676 South 400 West • Murray, UT 84107 • Phone: (801) 262-9700 • Fax: (801) 261-8242 • www.alders.com
 Utah Contractor License: #228819-5501 • Nevada Contractor License: #26693

QUOTE SHEET

Job Title Sommet Blanc Condos
Bid Date 4/28/2023

Addendas Acknowledged

None 1 2 3 4

Section	Description	Fob Job*	Installed	Tax Included		Quote Amount
				Yes	No	
083480	Smoke Containment System		YES	X		\$ 234,248.00
	For Fire Rated Elevator Hoistway Doors					
	- Smoke Guard M200 (T1-T5)					
	Smoke Containment System		YES	X		\$ 267,367.00
	For Fire Rated Elevator Hoistway Doors					
	- Smoke Guard M200/M400 (T1-T5)					
ADD	Smoke Containment System		YES	X		\$ 30,030.00
	If needed for Elevators LS and S1					

This quote must be refigured after 30 days

* FOB JOB = FOB FACTORY, FREIGHT ALLOWED

Explanation or Remarks

We propose to furnish and install (39) each 4'-0" wide x 9'-0" tall Smoke Guard Model 200 units for the elevator openings listed on elevators T1/T2 Lvl's B and 2-5, Elevators T3/T4 Lvl's B1 and 2-7 and Elevator T5 Lvl's, 1, 2-7(opens to both sides) and 8.

Add: Elevators LS and S1(5 units), if needed would be at an additional cost (Priced reflected above as ADD).

This is for standard model 200's available for a 3'-6" wide or 4'-0" wide and up to 10' tall mounting height with a standard 2" elevator frame. If the elevator frame varies from the 2" frame there would be a price increase to accomodate a wider frame.

Price does not include:

1. Electrical hook ups and wiring to smoke detector.
2. The smoke detector and structural backing for mounting box are also supplied by others
3. Structural engineering; product engineering except when the manufacturer will provide without additional costs.
4. Professional Errors and Omissions Liability Insurance.
5. Pollution Insurance Policy.

Cancellations:

A minimum 20% cancellation charge will be applied to any project that is cancelled after a formal or informal notice to

Thank you

Representative: Easton Wade



Distributor: Alders Sales Corp
Project: Sommet Blanc Condos
Project Address: , Please Select
Client:

Shop Drawing Date: 4/28/2023

SG Quote #: Q-038340
Quoted By: Easton Wade



SHOP DRAWINGS COVER SHEET

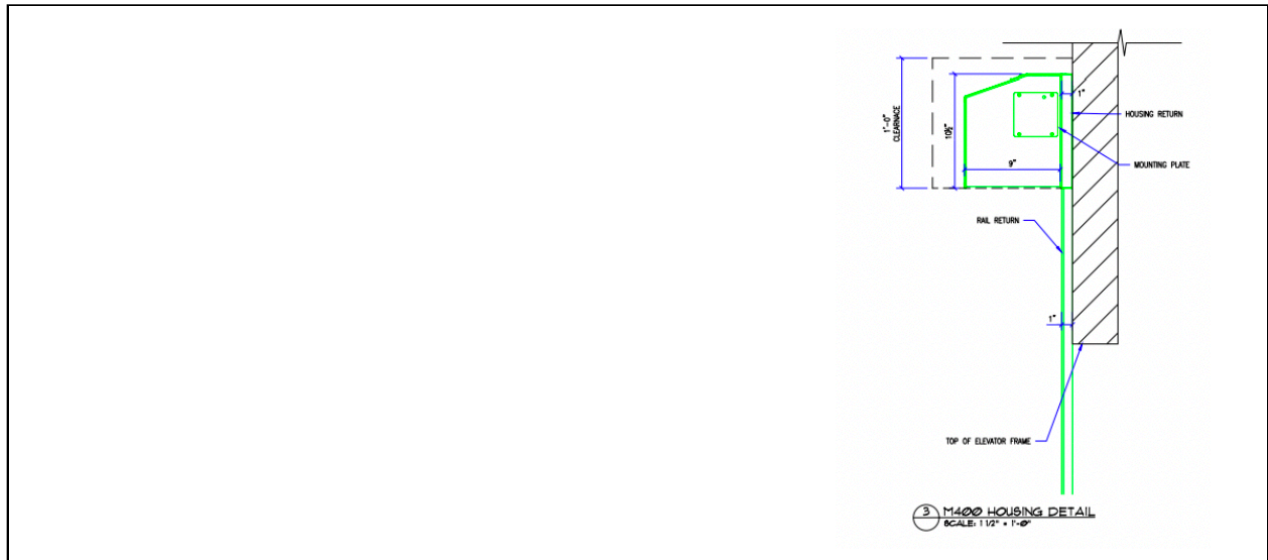
MAGNET

Product Schedule

General Info				Elevator Info					Unit Info		
Line	Config	Model	Qty	Location	Width	Height	Frame Width	Head Width	CL	Hsg Return	Mount Height
1	C-055234	M200	1		48"	84"	2"	52"	54 1/4"	1"	120"
2	C-055235	M400	1		48"	84"	2"	52"	54 1/4"	1"	132"

Magnet Product Product Grouping Cover Sheet

BASIC PRODUCT DETAILS



Product Image



Magnet - Product Schedule

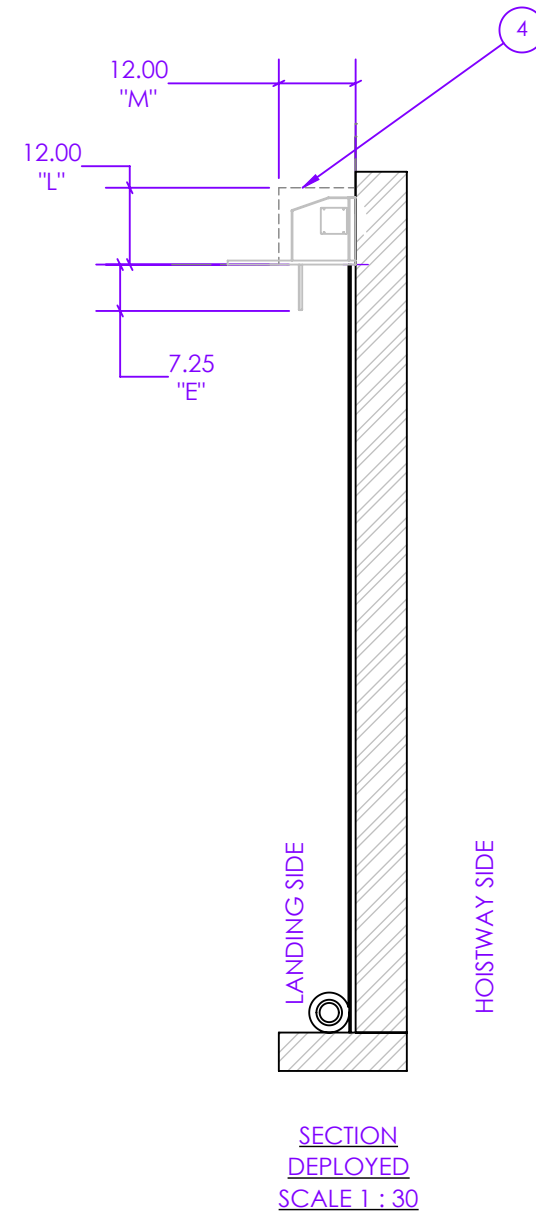
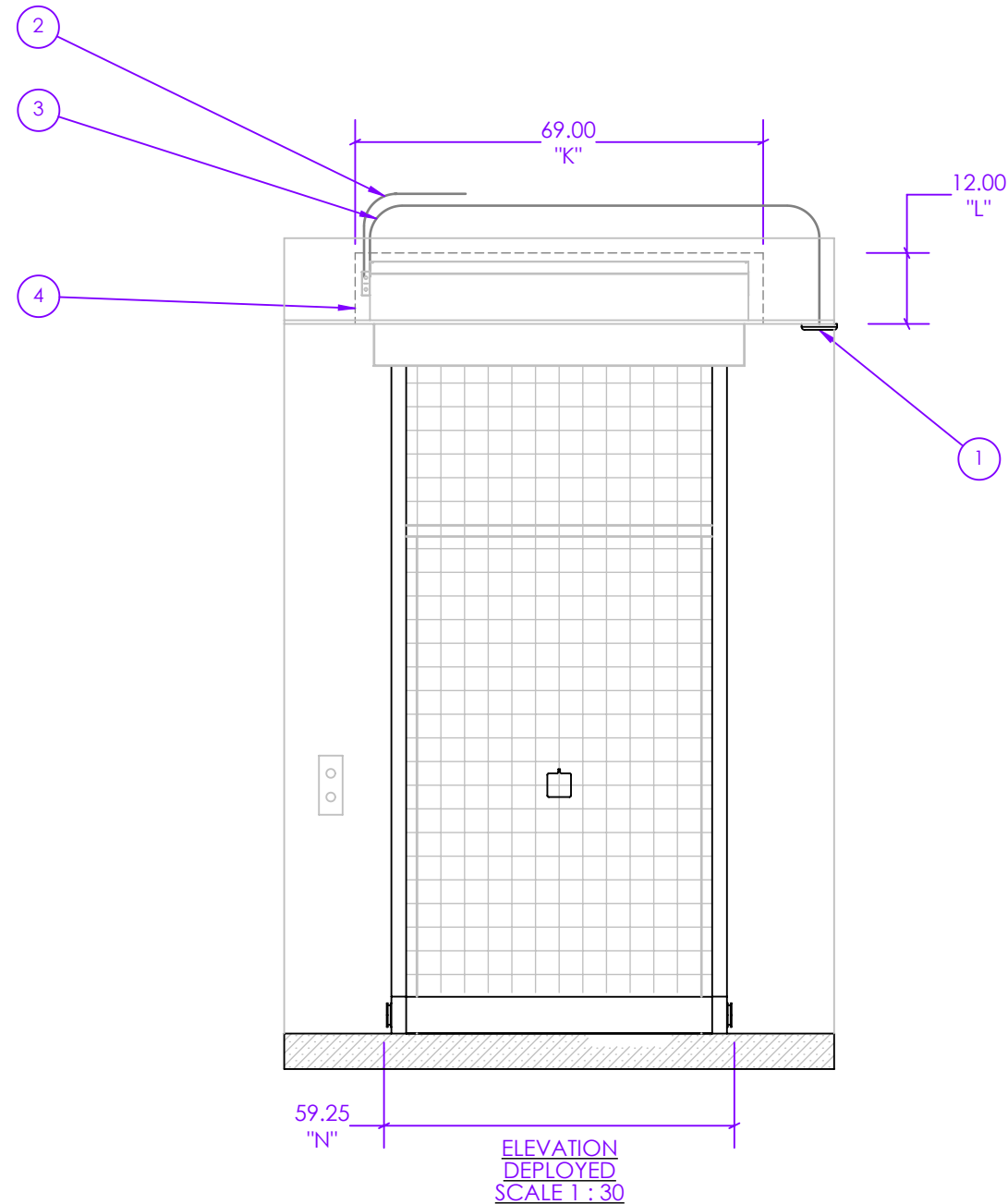
General Info					Elevator Info					Unit Info					Clearances			
Line	Config	Model	Qty	Location	Width	Height	Frame Width	Head Width	Projection	CL	Hsg Width	Hsg Return	Mount Height	Rails	Screen Assy Clr	Sys Width Clr	Housing Depth Clr	Housing Height Clr
1	C-055234	M200	1		48"	84"	2"	52"	1"	54 1/4"	64"	1"	120"	2"x1"	59.25"	69"	12"	12"
2	C-055235	M400	1		48"	84"	2"	52"	1"	54 1/4"	64"	1"	132"	2"x1"	59.25"	69"	12"	12"



Distributor: Alders Sales Corp
Project: Sommet Blanc Condos
Project Address: , Please Select
Client:

Shop Drawing Date: 4/28/2023

SG Quote #: Q-038340
Quoted By: Easton Wade



M200 ROUGH OPENING DIMENSIONS

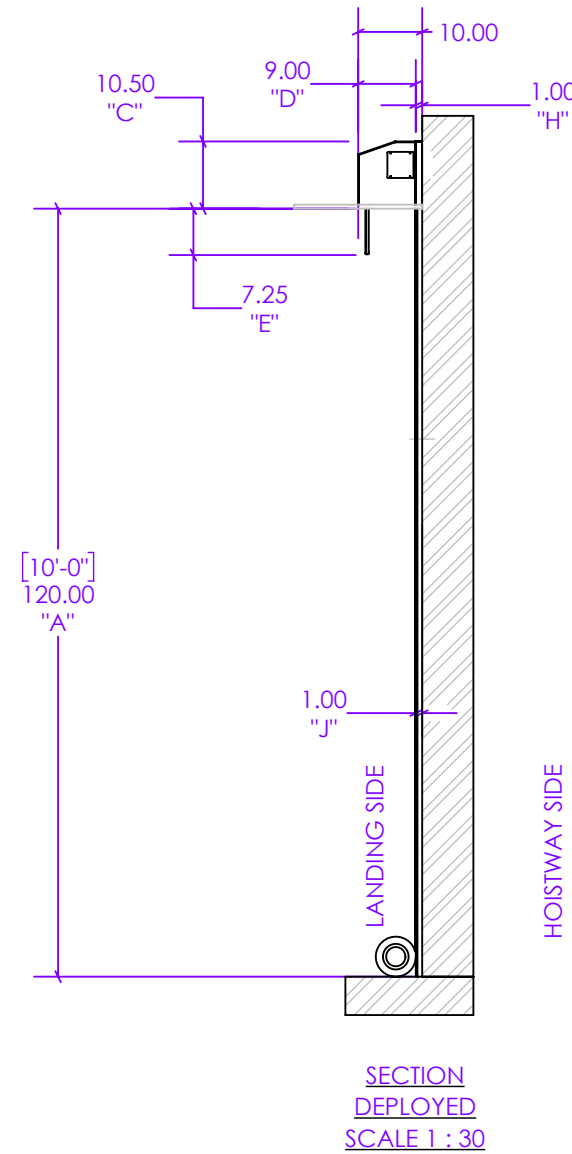
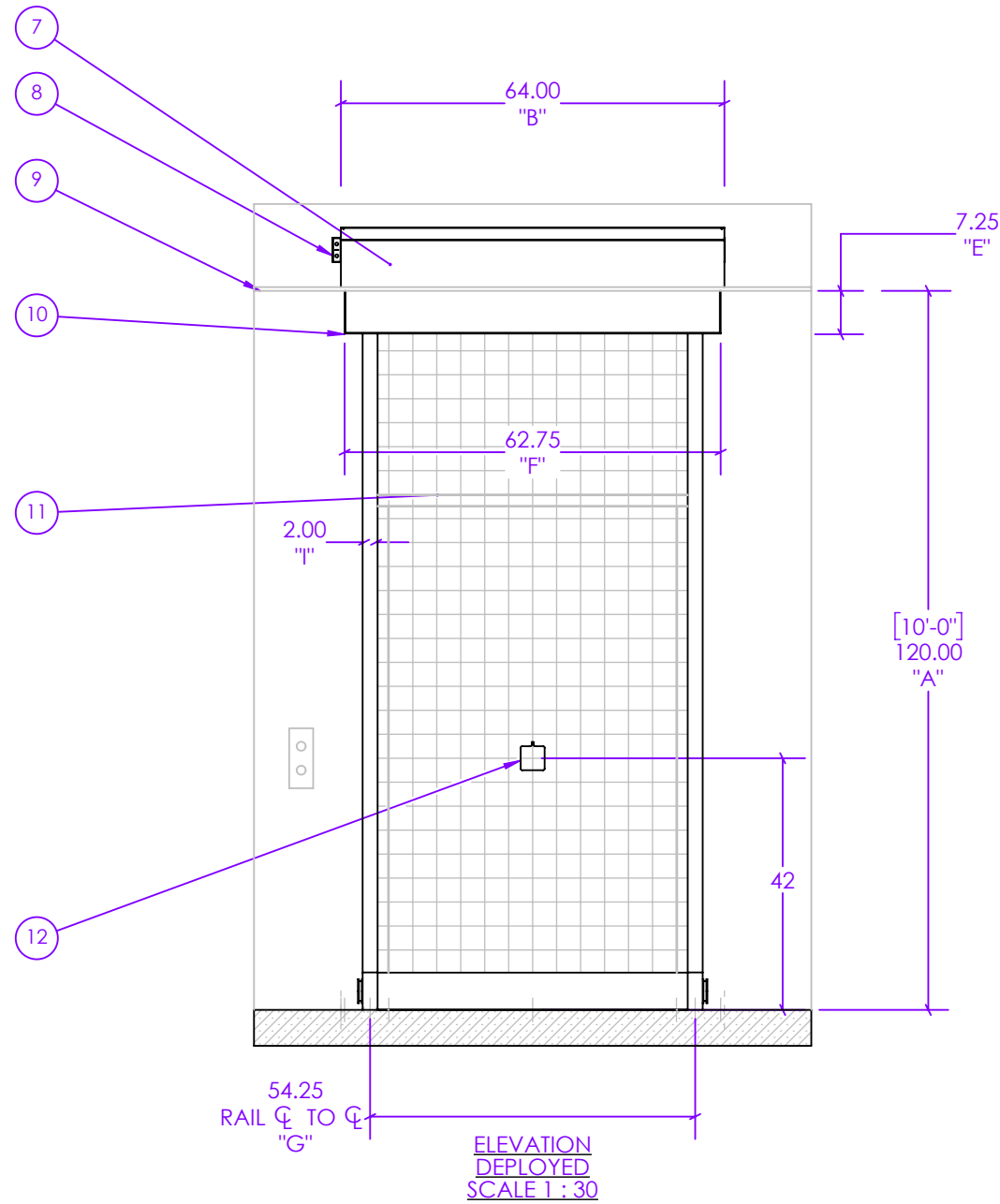
	SHOP DRAWING NOTE KEY		
1	ALARM (RELEASING DEVICE)		
2	120VAC LINE		
3	ALARM CIRCUIT		
4	HOUSING CLEARANCE WIDTH		
5	SCREEN ASSEMBLY CLEARANCE <ul style="list-style-type: none">• WALL PLUMB• FREE OF ALL OBSTRUCTIONS AND PROJECTIONS THAT EXCEED SYSTEM RETURN INCLUDING ELEVATOR POSITION INDICATORS, SIGNS, AND WALL STATIONS		
6	SCREEN ASSEMBLY <ul style="list-style-type: none">• 2 MIL. REINFORCED DURANET FILM• ATTACHED TO CONTINUOUS FLEXIBLE MAGNETS ALONG EACH VERTICAL EDGE• INCLUDES SCREEN REWIND SWITCH LOCATED 42" FROM FLOOR DURING INSTALLATION		
	UNIT DETAILS		
	MODEL	M200	
	CONFIGURATION	C-055234	
	FINISH	STANDARD_POWDER	
	FINISH COLOR	9010	
	BUILD NO.	0	
	ELEVATOR FLOOR:		
	PARAMETER	VALUE (IN)	REF.
CLEARANCE DIMENSIONS			
	HOUSING WIDTH	69	K
	HOUSING HEIGHT	12	L
	HOUSING DEPTH	12	M
	SCREEN WIDTH	59.25	N



Distributor: Alders Sales Corp
Project: Sommet Blanc Condos
Project Address: , Please Select
Client:

Shop Drawing Date: 4/28/2023

SG Quote #: Q-038340
Quoted By: Easton Wade



M200 UNIT DIMENSIONS

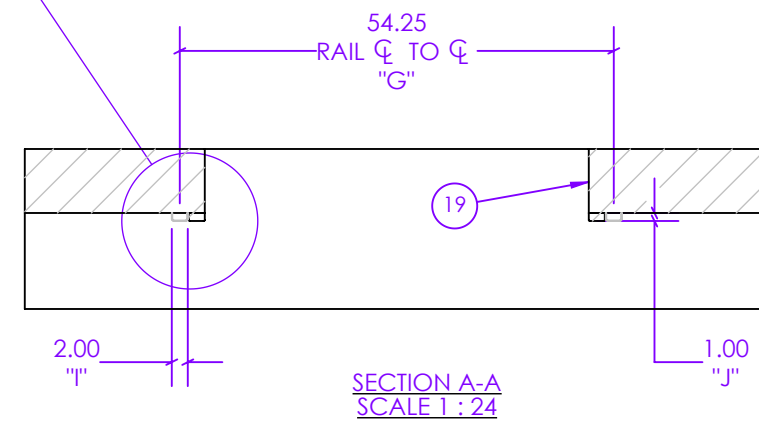
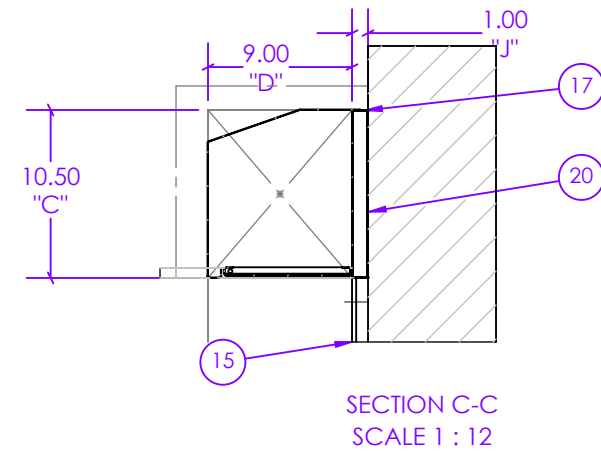
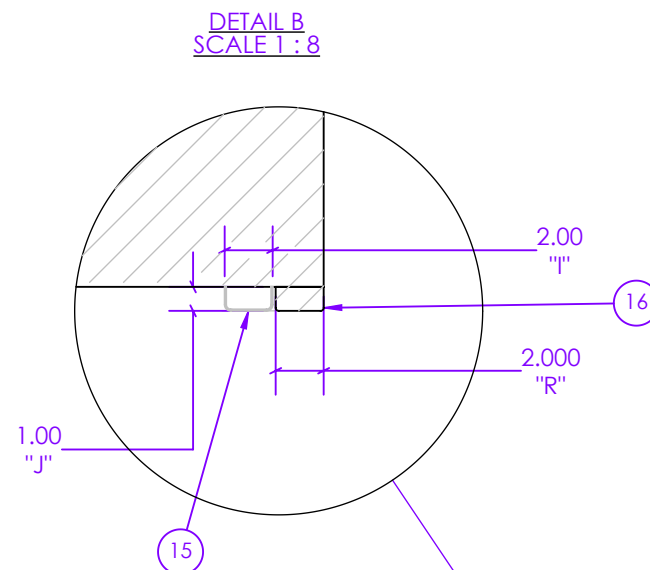
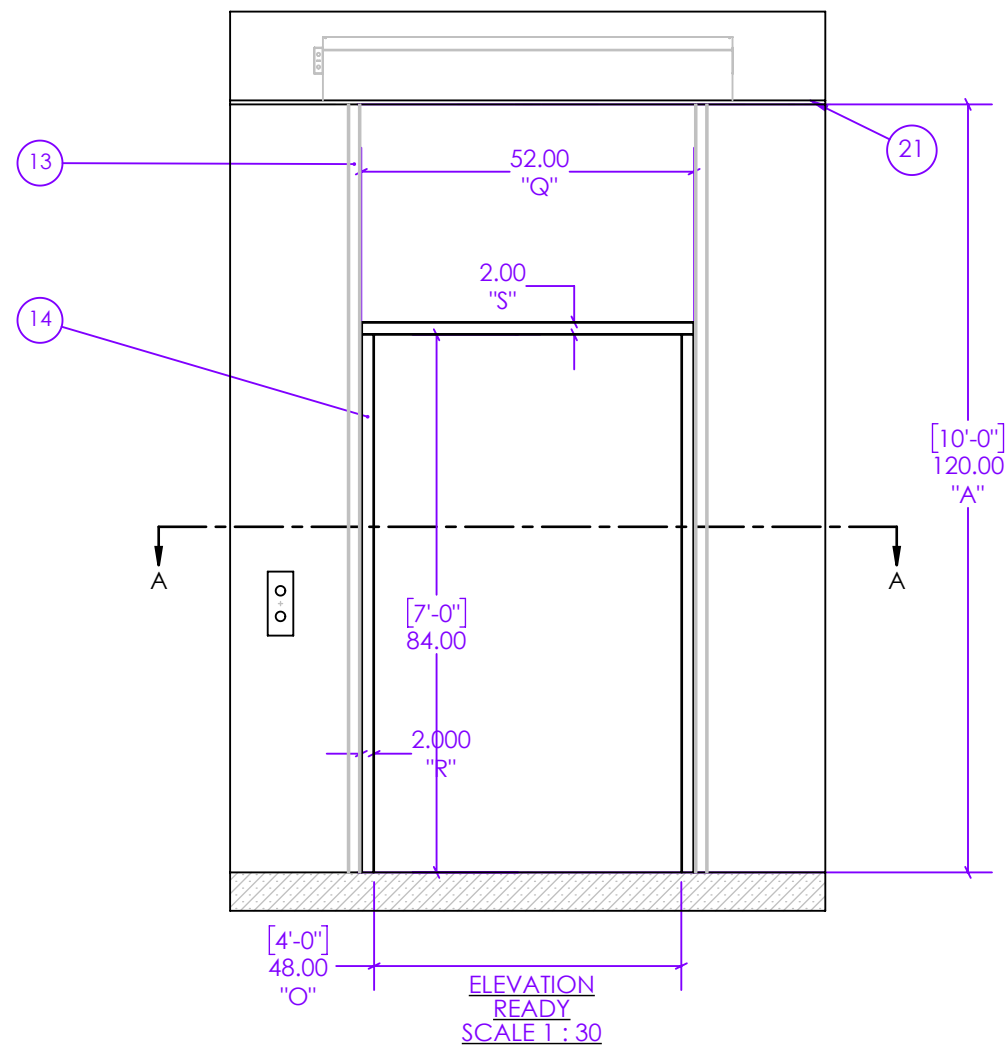
	SHOP DRAWING NOTE KEY		
7	HOUSING		
8	ELECTRICAL HOUSING JUNCTION BOX		
9	FINISHED CEILING		
10	HOUSING DOOR		
11	SMOKE GUARD CURTAIN		
12	SCREEN REWIND SWITCH		
	UNIT DETAILS		
	MODEL	M200	
	CONFIGURATION	C-055234	
	FINISH	STANDARD_POWDER	
	FINISH COLOR	9010	
	BUILD NO.	0	
	PARAMETER	VALUE (IN)	REF
	MOUNTING HEIGHT	120	A
	HOUSING WIDTH	64	B
	HOUSING RETURN	1	H
	HOUSING HEIGHT	10.5	C
	HOUSING DEPTH	9	D
	RAIL WIDTH	2	I
	DOOR WIDTH	62.75	F
	DOOR HEIGHT	7.25	E
	RAIL RETURN	1	J
	CENTERLINE	54.25	G



Distributor: Alders Sales Corp
Project: Sommet Blanc Condos
Project Address: , Please Select
Client:

Shop Drawing Date: 4/28/2023

SG Quote #: Q-038340
Quoted By: Easton Wade



M200 ELEVATOR DIMENSIONS

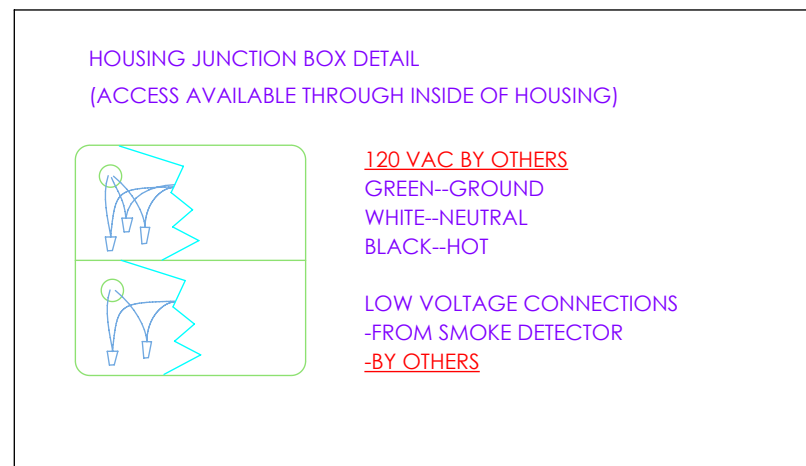
SHOP DRAWING NOTE KEY				
13	AUXILAIRY RAILS			
	• AUXILIARY RAILS PROJECT FROM THE WALL THE DEPTH OF THE RAIL RETURN			
	• 16-GAUGE, 43 FERRITIC STAINLESS STEEL			
	• PROJECT BEYOND THE WALL THE DEPTH OF THE SYSTEM RETURN			
	• IF FIELD PAINTING IS REQUIRED, GENERAL CONTRACTOR CAN SPRAY PAINT FRAME WITH A PAINT RESISTANT TO 300F, TO A MAXIMUM THICKNESS OF .005"			
14	ELEVATOR FRAMES			
15	AUXILAIRY RAIL RETURN			
16	AUXILAIRY RAIL WIDTH			
17	HOUSING HEIGHT			
18	HOUSING RETURN			
	• HOUSING PROJECTS FROM WALL THE DEPTH OF THE HOUSING RETURN SO SCREEN ASSEMBLY CLEARS HEAD OF THE ELEVATOR FRAME			
19	ELEVATOR FRAME			
20	MOUNTING PLATE			
	• WALL MATERIAL SUITABLE AS ANCHORAGE OR GENERAL CONTRACTOR PROVIDES BACKING			
21	CEILING SYSTEM			
	• SUPPORTED FROM HOUSING PERIMETER BY AT LEAST 1/8" GAP			
	UNIT DETAILS			
	MODEL		M200	
	CONFIGURATION		C-055234	
	FINISH		STANDARD_POWDER	
	FINISH COLOR		9010	
	BUILD NO.		0	
	ELEVATOR FLOOR:			
	PARAMETER		VALUE (IN)	REF.
	OPENING WIDTH		48	O
	OPENING HEIGHT		84	P
HEAD WIDTH		52	Q	
FRAME FACE WIDTH		2	R	
ELEVATOR HEAD HEIGHT		2	S	
HEAD PROJECTION		1	T	
	MOUNTING HEIGHT		120	A
	HOUSING RETURN		1	J
	HOUSING HEIGHT		10.5	C
	HOUSING DEPTH		9	D
	RAIL WIDTH		2	I
	RAIL RETURN		1	J
	HOUSING DEPTH PLUS RETURN		10	U
	CENTERLINE		54.25	G



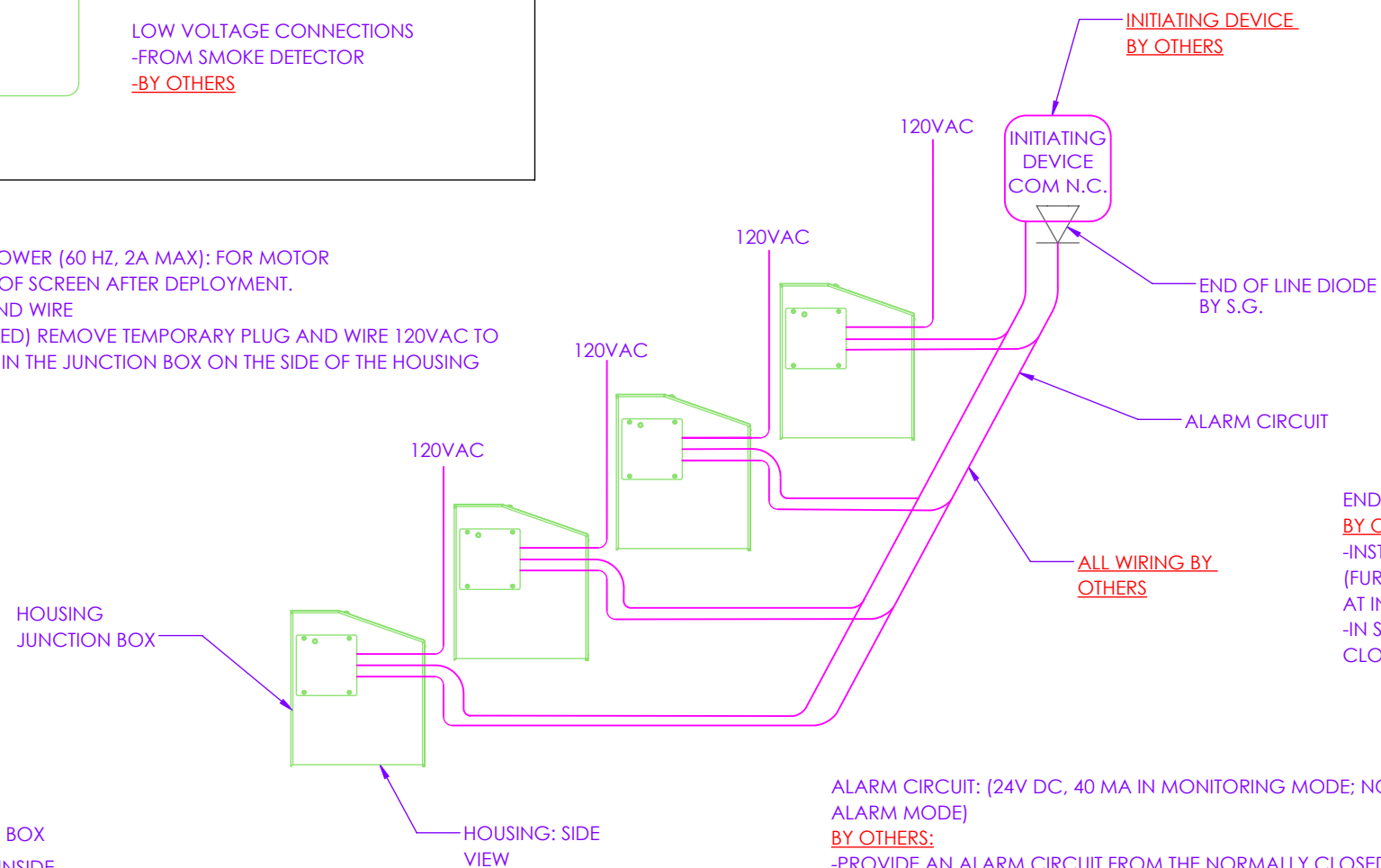
Distributor: Alders Sales Corp
Project: Sommet Blanc Condos
Project Address: , Please Select
Client:

Shop Drawing Date: 4/28/2023

SG Quote #: Q-038340
Quoted By: Easton Wade



BY OTHERS: 120VAC POWER (60 HZ, 2A MAX): FOR MOTOR
REWIND/RETRACTION OF SCREEN AFTER DEPLOYMENT.
-PROVIDE CONDUIT AND WIRE
-(AFTER UNIT IS INSTALLED) REMOVE TEMPORARY PLUG AND WIRE 120VAC TO
HIGH VOLTAGE WIRES IN THE JUNCTION BOX ON THE SIDE OF THE HOUSING
-PROVIDE GROUND



SMOKE DETECTOR (UL 268 COMPLIANT) **BY OTHERS:**
-PROVIDE A NORMALLY CLOSED AUXILIARY CONTACT THAT IS ACTIVATED WHEN
THE SMOKE DETECTOR GOES INTO ALARM. THIS CONTACT DOES NOT ACTIVATE
ON GENERAL BUILDING ALARM.
-(WHEN THERE ARE MULTIPLE-UNIT SYSTEM IN A COMMON AREA THAT ARE
ACTIVATED BY A SINGLE SMOKE DETECTOR); WIRE UP TO 4 SMOKE GUARD UNITS
TO A SINGLE SMOKE DETECTOR, IN PARALLEL. MULTIPLE UNITS ON A COMMON
FLOOR THAT ARE ACTIVATED BY THE SAME SMOKE DETECTOR REQUIRE ALARM
CIRCUIT WIRING FROM THE DETECTOR TO EACH UNIT. THE PRINTED CIRCUIT
BOARD IN EACH HOUSING MUST SEE THE END-OF-LINE DIODE ON THE SMOKE
DETECTOR.

END-OF-LINE DIODE:
BY OTHERS:
-INSTALL 3.9V OR 2 WATT END-OF-LINE DIODE
(FURNISHED BY SMOKE GUARD)
AT INITIATING DEVICE.
-IN SERIES WITH THE NORMALLY
CLOSED AUXILIARY CONTACT.

ALARM CIRCUIT: (24V DC, 40 MA IN MONITORING MODE; NO VOLTAGE OR AMPS IN
ALARM MODE)
BY OTHERS:
-PROVIDE AN ALARM CIRCUIT FROM THE NORMALLY CLOSED AUXILIARY CONTACT
OF THE SMOKE DETECTOR TO THE LOW VOLTAGE WIRES IN THE JUNCTION BOX ON
THE SIDE OF THE HOUSING, USING STRANDED WIRES, IN RACEWAYS OR CONDUIT.
-(AFTER UNIT IS INSTALLED) TERMINATE THE SMOKE DETECTOR WIRES TO LOW
VOLTAGE WIRES IN THE JUNCTION BOX ON THE SIDE OF THE HOUSING.

HOUSING JUNCTION BOX
(ACCESS THROUGH INSIDE
OF HOUSING)

THIS DRAWING ILLUSTRATES THAT UP TO
4 HOUSINGS CAN BE WIRED, IN PARALLEL, TO THE SAME END-OF-DIODE AT AN
INITIATING DEVICE (SMOKE DETECTOR) AUXILIARY CONTACT.

M200 ELECTRICAL DIAGRAM

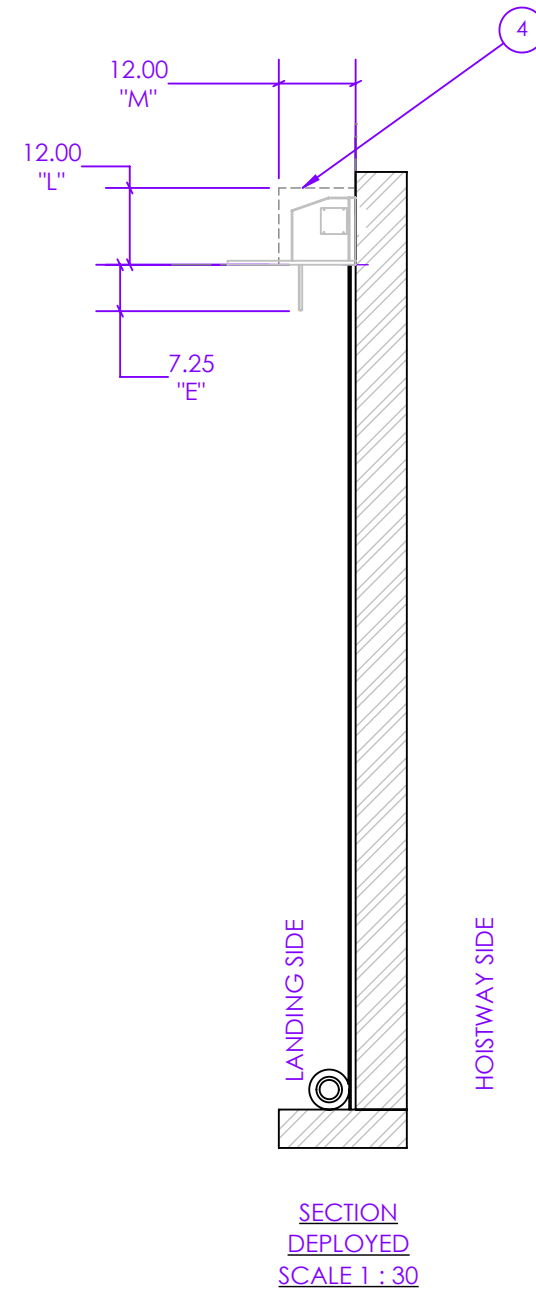
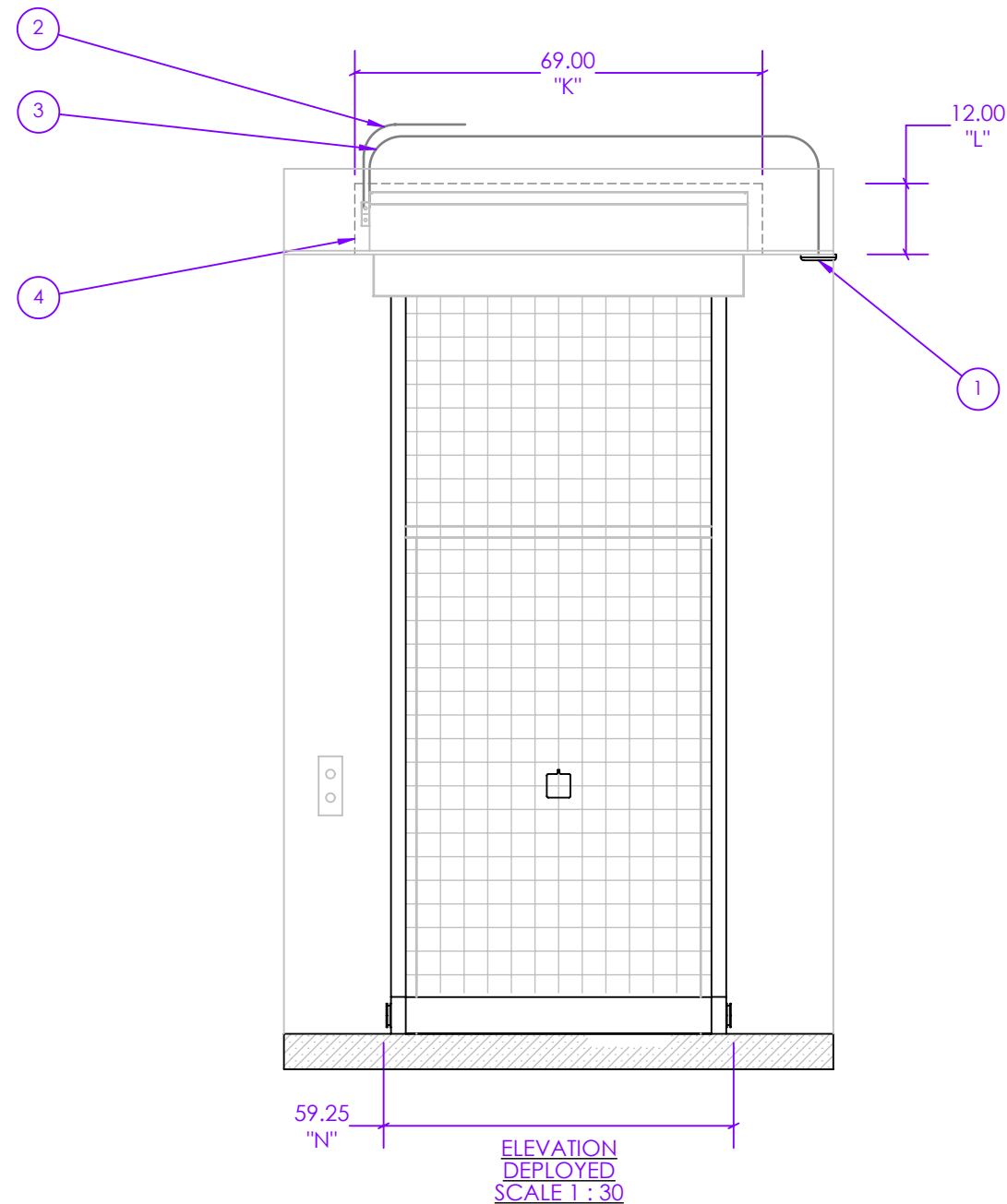
SHOP DRAWING NOTE KEY	
UNIT DETAILS	
MODEL	M200
CONFIGURATION	C-055234
FINISH	STANDARD_POWDER
FINISH COLOR	9010
BUILD NO.	0
PARAMETER	VALUE
BATTERY BACKUP	NO
WALL SWITCH	NO



Distributor: Alders Sales Corp
Project: Sommet Blanc Condos
Project Address: , Please Select
Client:

Shop Drawing Date: 4/28/2023

SG Quote #: Q-038340
Quoted By: Easton Wade



M400 ROUGH OPENING DIMENSIONS

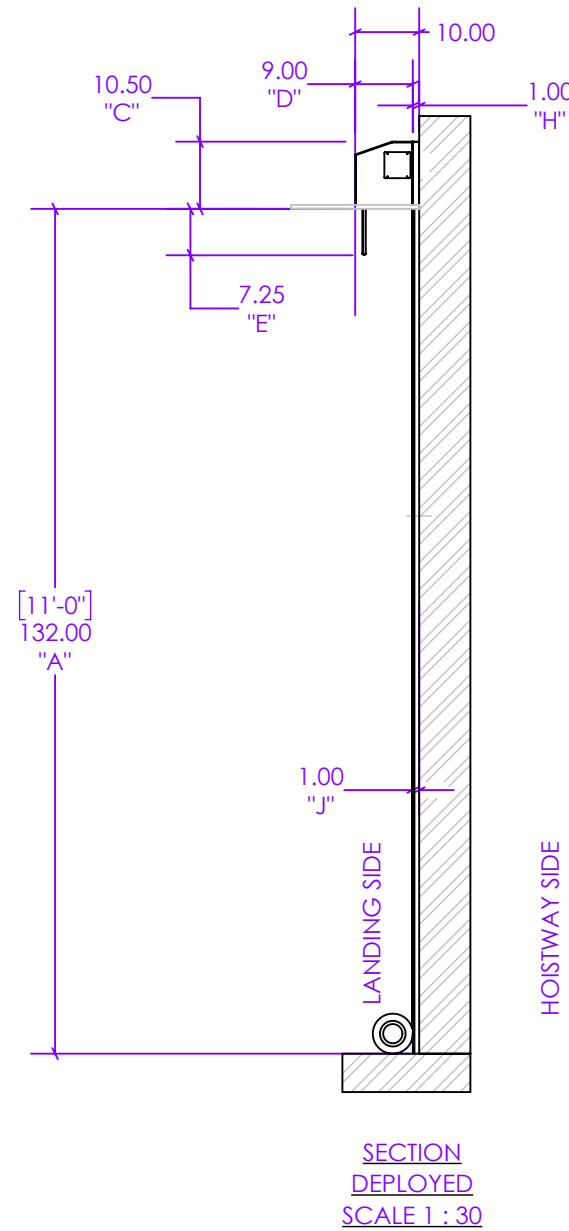
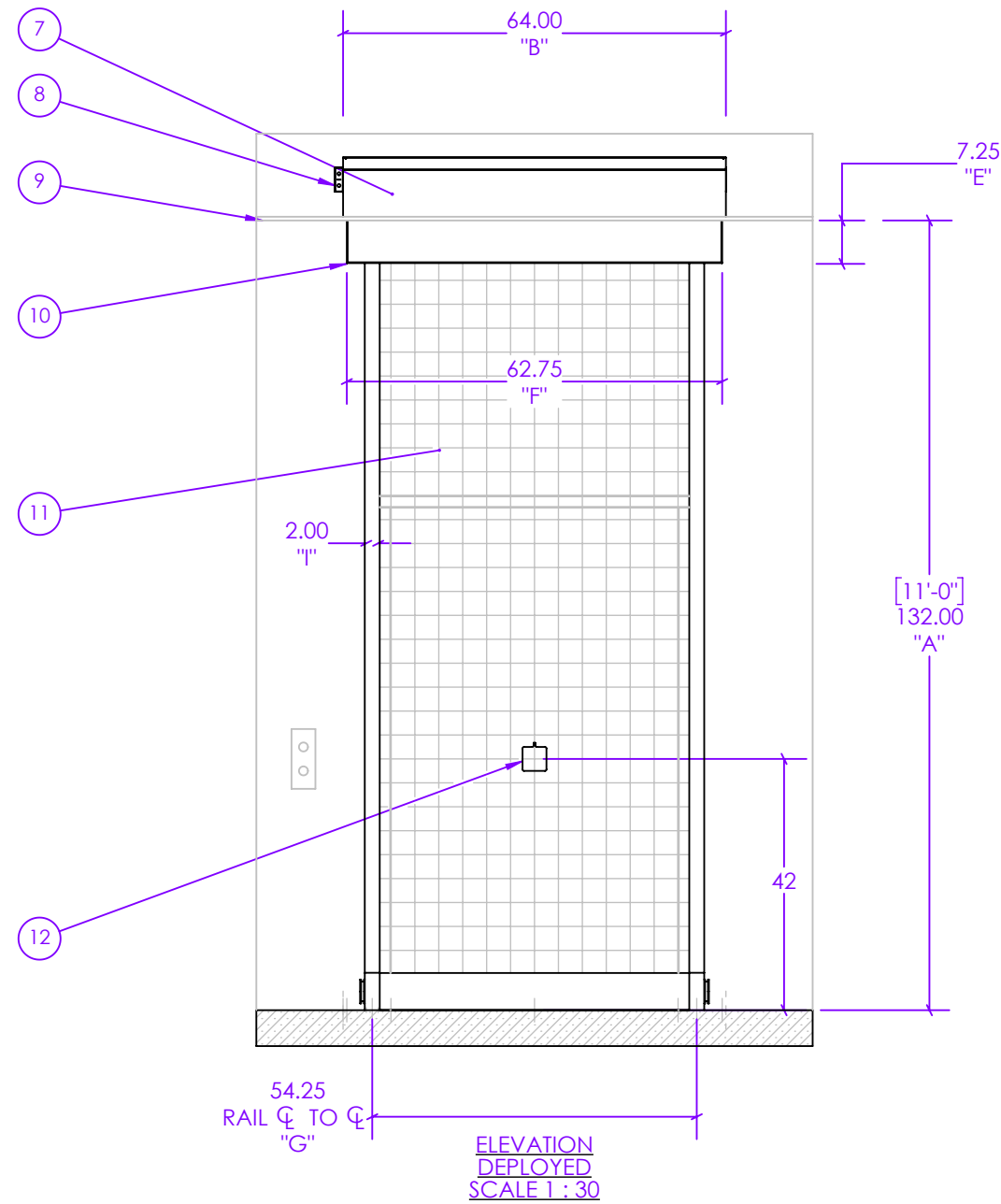
	SHOP DRAWING NOTE KEY		
1	ALARM (RELEASING DEVICE)		
2	120VAC LINE		
3	ALARM CIRCUIT		
4	HOUSING CLEARANCE WIDTH		
5	SCREEN ASSEMBLY CLEARANCE <ul style="list-style-type: none">• WALL PLUMB• FREE OF ALL OBSTRUCTIONS AND PROJECTIONS THAT EXCEED SYSTEM RETURN INCLUDING ELEVATOR POSITION INDICATORS, SIGNS, AND WALL STATIONS		
6	SCREEN ASSEMBLY <ul style="list-style-type: none">• 2 MIL. REINFORCED DURANET FILM• ATTACHED TO CONTINUOUS FLEXIBLE MAGNETS ALONG EACH VERTICAL EDGE• INCLUDES SCREEN REWIND SWITCH LOCATED 42" FROM FLOOR DURING INSTALLATION		
	UNIT DETAILS		
	MODEL	M400	
	CONFIGURATION	C-055235	
	FINISH	STANDARD_POWDER	
	FINISH COLOR	9010	
	BUILD NO.	0	
	ELEVATOR FLOOR:		
	PARAMETER	VALUE (IN)	REF.
CLEARANCE DIMENSIONS			
	HOUSING WIDTH	69	K
	HOUSING HEIGHT	12	L
	HOUSING DEPTH	12	M
	SCREEN WIDTH	59.25	N



Distributor: Alders Sales Corp
Project: Sommet Blanc Condos
Project Address: , Please Select
Client:

Shop Drawing Date: 4/28/2023

SG Quote #: Q-038340
Quoted By: Easton Wade



M400 UNIT DIMENSIONS

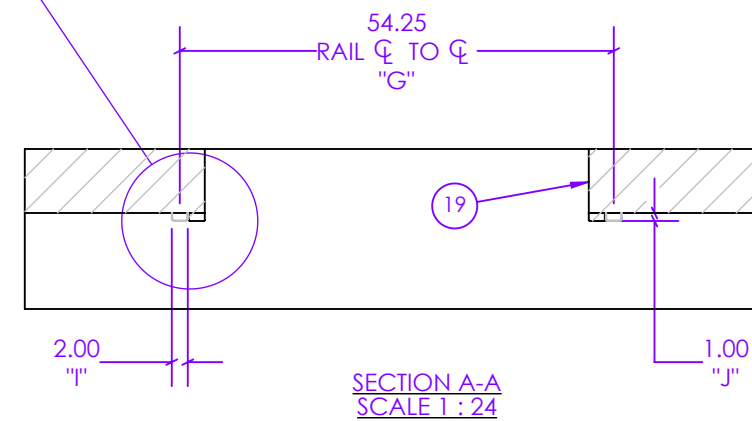
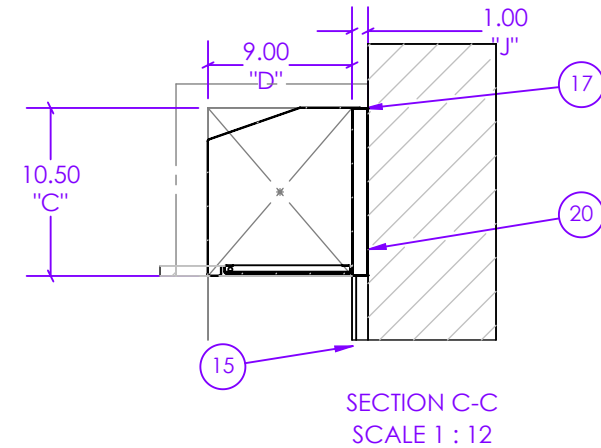
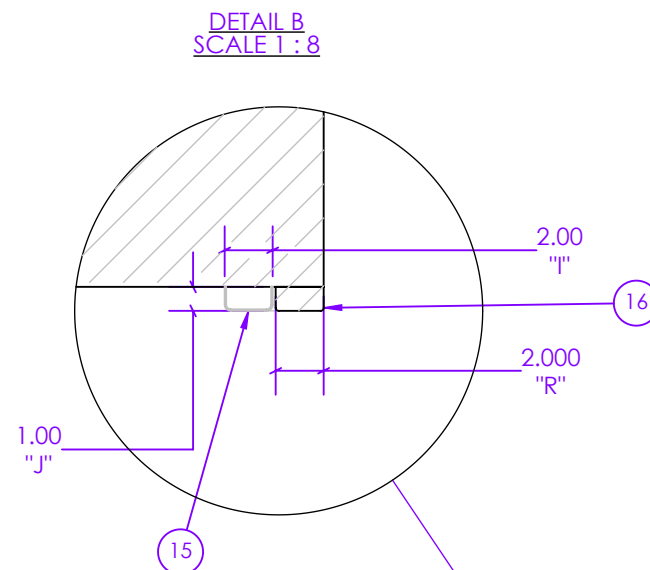
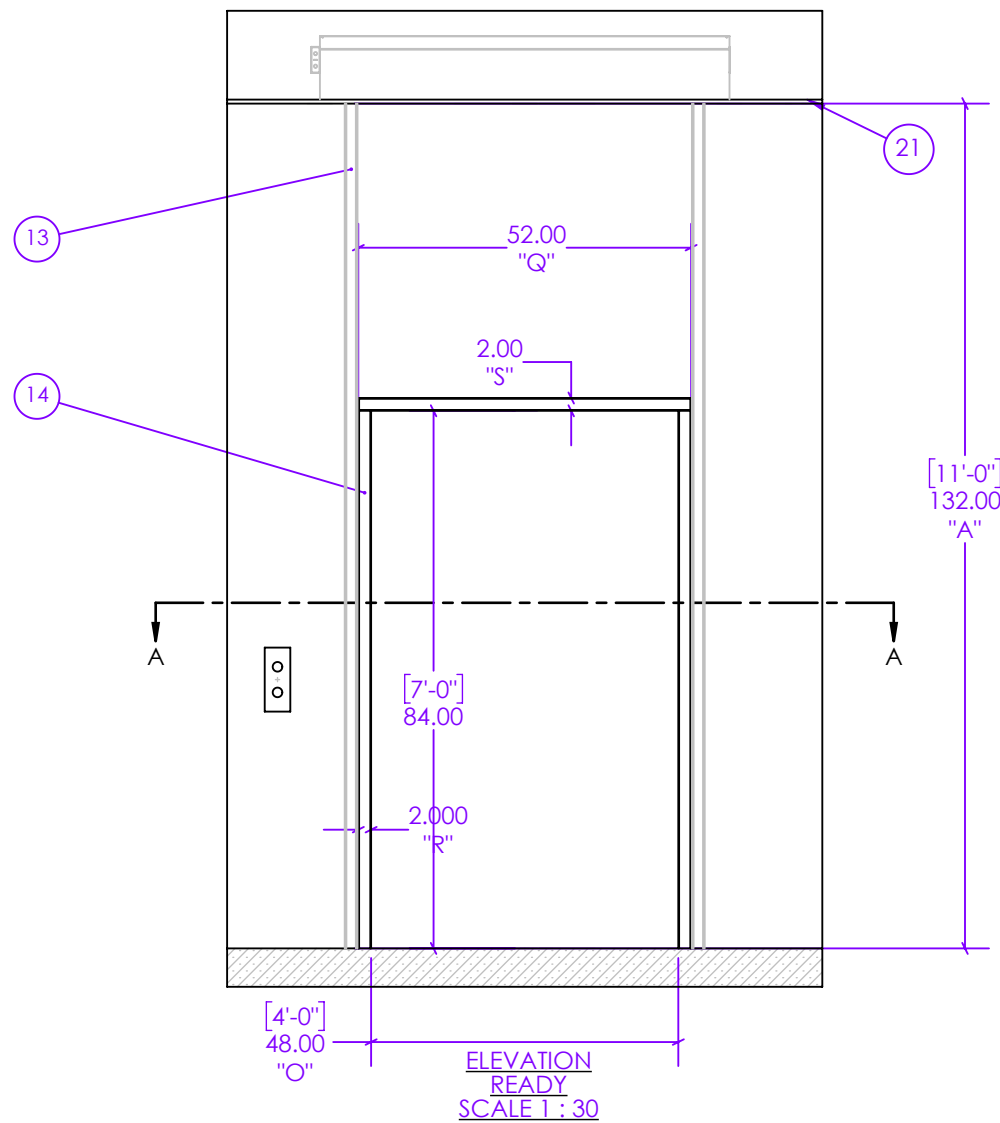
	SHOP DRAWING NOTE KEY		
7	HOUSING		
8	ELECTRICAL HOUSING JUNCTION BOX		
9	FINISHED CEILING		
10	HOUSING DOOR		
11	SMOKE GUARD CURTAIN		
12	SCREEN REWIND SWITCH		
	UNIT DETAILS		
	MODEL	M400	
	CONFIGURATION	C-055235	
	FINISH	STANDARD_POWDER	
	FINISH COLOR	9010	
	BUILD NO.	0	
	PARAMETER	VALUE (IN)	REF
	MOUNTING HEIGHT	132	A
	HOUSING WIDTH	64	B
	HOUSING RETURN	1	H
	HOUSING HEIGHT	10.5	C
	HOUSING DEPTH	9	D
	RAIL WIDTH	2	I
	DOOR WIDTH	62.75	F
	DOOR HEIGHT	7.25	E
	RAIL RETURN	1	J
	CENTERLINE	54.25	G



Distributor: Alders Sales Corp
Project: Sommet Blanc Condos
Project Address: , Please Select
Client:

Shop Drawing Date: 4/28/2023

SG Quote #: Q-038340
Quoted By: Easton Wade



M400 ELEVATOR DIMENSIONS

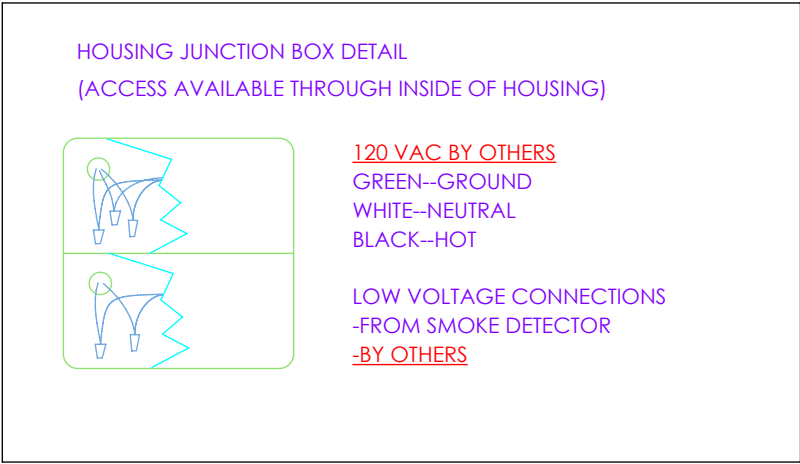
	SHOP DRAWING NOTE KEY		
13	AUXILAIRY RAILS • AUXILIARY RAILS PROJECT FROM THE WALL THE DEPTH OF THE RAIL RETURN • 16-GAUGE, 43 FERRITIC STAINLESS STEEL • PROJECT BEYOND THE WALL THE DEPTH OF THE SYSTEM RETURN • IF FIELD PAINTING IS REQUIRED, GENERAL CONTRACTOR CAN SPRAY PAINT FRAME WITH A PAINT RESISTANT TO 300F, TO A MAXIMUM THICKNESS OF .005"		
14	ELEVATOR FRAMES		
15	AUXILAIRY RAIL RETURN		
16	AUXILAIRY RAIL WIDTH		
17	HOUSING HEIGHT		
18	HOUSING RETURN • HOUSING PROJECTS FROM WALL THE DEPTH OF THE HOUSING RETURN SO SCREEN ASSEMBLY CLEARS HEAD OF THE ELEVATOR FRAME		
19	ELEVATOR FRAME		
20	MOUNTING PLATE • WALL MATERIAL SUITABLE AS ANCHORAGE OR GENERAL CONTRACTOR PROVIDES BACKING		
21	CEILING SYSTEM • SUPPORTED FROM HOUSING PERIMETER BY AT LEAST 1/8" GAP		
	UNIT DETAILS		
	MODEL		M400
	CONFIGURATION		C-055235
	FINISH		STANDARD_POWDER
	FINISH COLOR		9010
	BUILD NO.		0
	ELEVATOR FLOOR:		
	PARAMETER		VALUE (IN) REF.
	OPENING WIDTH		48 O
	OPENING HEIGHT		84 P
HEAD WIDTH		52 Q	
FRAME FACE WIDTH		2 R	
ELEVATOR HEAD HEIGHT		2 S	
HEAD PROJECTION		1 T	
	MOUNTING HEIGHT		132 A
	HOUSING RETURN		1 J
	HOUSING HEIGHT		10.5 C
	HOUSING DEPTH		9 D
	RAIL WIDTH		2 I
	RAIL RETURN		1 J
	HOUSING DEPTH PLUS RETURN		10 U
	CENTERLINE		54.25 G



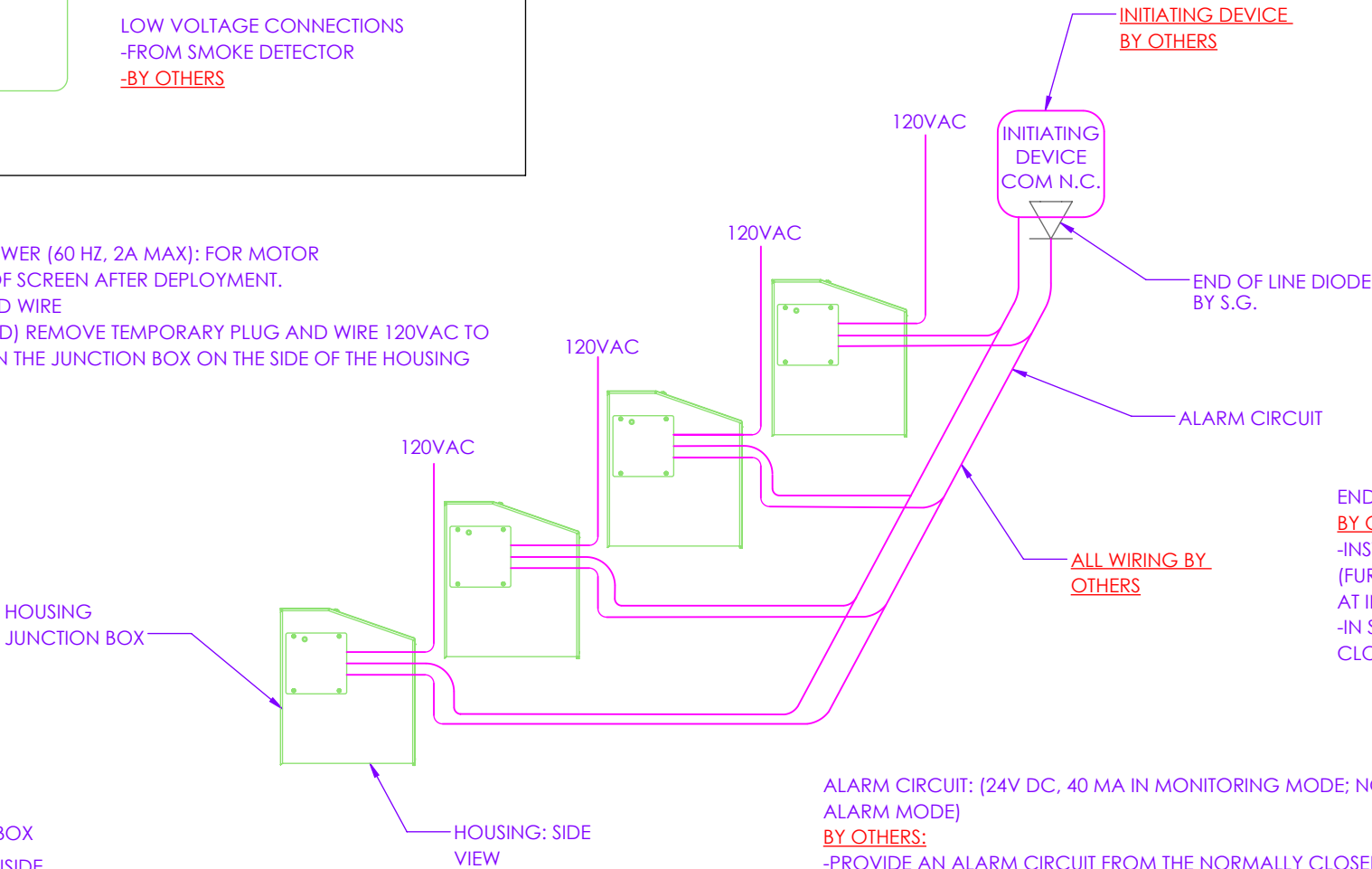
Distributor: Alders Sales Corp
Project: Sommet Blanc Condos
Project Address: , Please Select
Client:

Shop Drawing Date: 4/28/2023

SG Quote #: Q-038340
Quoted By: Easton Wade



BY OTHERS: 120VAC POWER (60 HZ, 2A MAX): FOR MOTOR
REWIND/RETRACTION OF SCREEN AFTER DEPLOYMENT.
-PROVIDE CONDUIT AND WIRE
-(AFTER UNIT IS INSTALLED) REMOVE TEMPORARY PLUG AND WIRE 120VAC TO
HIGH VOLTAGE WIRES IN THE JUNCTION BOX ON THE SIDE OF THE HOUSING
-PROVIDE GROUND



SMOKE DETECTOR (UL 268 COMPLIANT) BY OTHERS:
-PROVIDE A NORMALLY CLOSED AUXILIARY CONTACT THAT IS ACTIVATED WHEN
THE SMOKE DETECTOR GOES INTO ALARM. THIS CONTACT DOES NOT ACTIVATE
ON GENERAL BUILDING ALARM.
-(WHEN THERE ARE MULTIPLE-UNIT SYSTEM IN A COMMON AREA THAT ARE
ACTIVATED BY A SINGLE SMOKE DETECTOR); WIRE UP TO 4 SMOKE GUARD UNITS
TO A SINGLE SMOKE DETECTOR, IN PARALLEL. MULTIPLE UNITS ON A COMMON
FLOOR THAT ARE ACTIVATED BY THE SAME SMOKE DETECTOR REQUIRE ALARM
CIRCUIT WIRING FROM THE DETECTOR TO EACH UNIT. THE PRINTED CIRCUIT
BOARD IN EACH HOUSING MUST SEE THE END-OF-LINE DIODE ON THE SMOKE
DETECTOR.

END-OF-LINE DIODE:
BY OTHERS:
-INSTALL 3.9V OR 2 WATT END-OF-LINE DIODE
(FURNISHED BY SMOKE GUARD)
AT INITIATING DEVICE.
-IN SERIES WITH THE NORMALLY
CLOSED AUXILIARY CONTACT.

ALARM CIRCUIT: (24V DC, 40 MA IN MONITORING MODE; NO VOLTAGE OR AMPS IN
ALARM MODE)
BY OTHERS:
-PROVIDE AN ALARM CIRCUIT FROM THE NORMALLY CLOSED AUXILIARY CONTACT
OF THE SMOKE DETECTOR TO THE LOW VOLTAGE WIRES IN THE JUNCTION BOX ON
THE SIDE OF THE HOUSING, USING STRANDED WIRES, IN RACEWAYS OR CONDUIT.
-(AFTER UNIT IS INSTALLED) TERMINATE THE SMOKE DETECTOR WIRES TO LOW
VOLTAGE WIRES IN THE JUNCTION BOX ON THE SIDE OF THE HOUSING.

HOUSING JUNCTION BOX
(ACCESS THROUGH INSIDE
OF HOUSING)

THIS DRAWING ILLUSTRATES THAT UP TO
4 HOUSINGS CAN BE WIRED, IN PARALLEL, TO THE SAME END-OF-DIODE AT AN
INITIATING DEVICE (SMOKE DETECTOR) AUXILIARY CONTACT.

M400 ELECTRICAL DIAGRAM

SHOP DRAWING NOTE KEY	
UNIT DETAILS	
MODEL	M400
CONFIGURATION	C-055235
FINISH	STANDARD_POWDER
FINISH COLOR	9010
BUILD NO.	0
PARAMETER	VALUE
BATTERY BACKUP	NO
WALL SWITCH	NO



Made in the USA

SMOKE GUARD® system

Models 200/400

Elevator Smoke Curtain



ICC Evaluation Service Report ESR-1136

System Description. The Smoke Guard system Models 200/400 (M200/M400) create a code compliant smoke- and draft-control assembly when paired with common fire-rated elevator doors. The Smoke Guard DuraNet™ screen assembly consists of a reinforced translucent material connected to flexible magnetic strips. These magnets adhere to either required full-length ferrous metal rails (M200) or the existing ferrous elevator door frame (M400) as the system deploys creating a tight seal. M200/ M400 units use standard 120 VAC building power and may be connected to standby power (M400 Battery Option adapts to both 120 VAC and 220 VAC).

Dimensions

- M200 housing lengths: 55" and 64" only
- M400 housing lengths: up to 60"
- Housing height: 10.5"
- Housing depth: 9" + return depth)
- M200 return depth: 1"
- M400 1/2", 3/4", 1"

Standards

- UL 1784 "Air Leakage Tests of Door Assemblies" without an artificial bottom seal, listed by Intertek
- UL 864 "Control Units for Fire Protective Signaling Systems" listed by Intertek

Complies with:

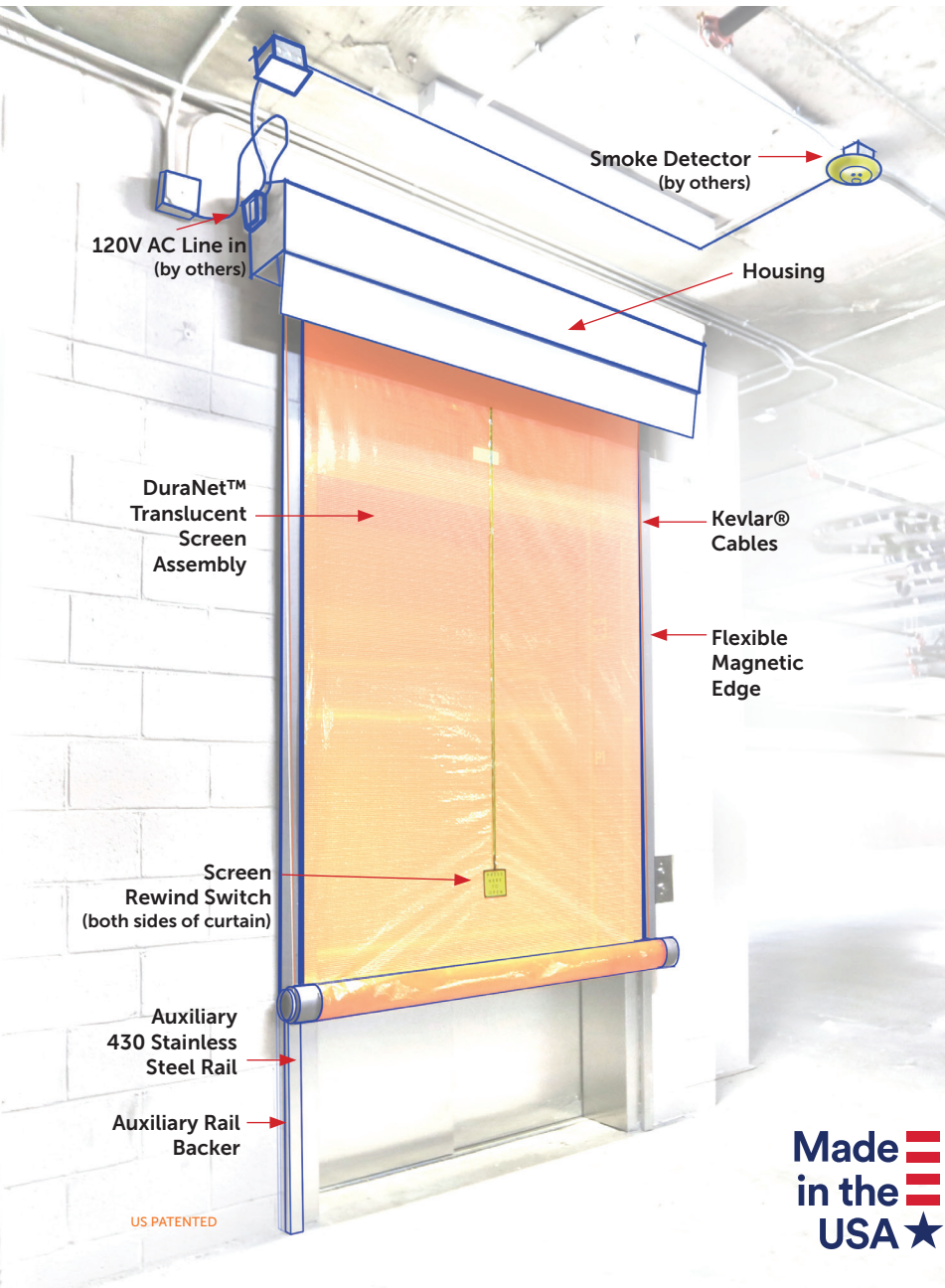
- ICC-ES Report AC77
- 2003 IBC Section 707.14.1
- 2006 IBC Section 707.14.1
- 2009 IBC Section 708.14.1
- 2012 IBC Section 713.14.1
- 2015 IBC Section 3006.1
- NFPA 105 "Installation of Smoke Control Door Assemblies"

Codes and Standards. The M200/M400 systems work in conjunction with fire-rated elevator doors to exceed the NFPA and IBC requirements for a smoke and draft control assembly. This enables the elevator to open directly onto the corridor.





Models 200/400 Elevator Smoke Curtain



System Operation. Smoke Guard elevator systems are designed to protect elevator openings and shaft from vertical smoke migration. The system will deploy when the smoke detector in the elevator lobby goes into alarm (or on loss of power to the unit). The system is not designed to deploy on general alarm. As the lobby smoke detector goes into alarm, the elevator will automatically return to the recall floor. If an elevator occupant were to encounter a deployed **M200/M400**, a screen rewind switch located on both sides of the screen will allow for egress. If smoke is still actively being detected, the screen will then redeploy to seal the opening. As power is restored, the screen will automatically rewind into the housing.

Installation. All Smoke Guard units are installed by factory trained and certified personnel. There is minimal preparation work. Installation requires a clear, plumb, unobstructed wall surface above the hoistway door, 120v AC power and a smoke detector.

Fail Safe Secure. **M200/M400** systems operate on a fail safe basis, on loss of AC power the screen will deploy. There is a deployment delay on power failure built into the system to avoid nuisance deploys on brief power outage.

Battery Backup. **M400** units may be specified with an internal, FCC compliant, battery backup system which allows full operation for up to 8 hours. Contact Smoke Guard for additional power specifications for this enhanced feature. This feature is not available in **M200** units.

Made in the USA ★

Rewind Switch. The Smoke Guard system screen rewind switch may be activated from both sides of the screen. This feature allows elevator occupants to exit from the elevator car using the interior (shaft side) of the switch. The screen will then redeploy after egress, as long as the smoke detector continues to be activated. In the event of power outage, the vertical edge of the curtain can be pushed away from the rail to allow passage with a force less than 15 lbs. as referenced by the ICC.

Listed Releasing Device. The **M200/M400** features a releasing device tested in accordance with the UL 864 standard by Intertek Laboratories.

Smoke Guard and Your Project

- ☐ Check for clearance/obstructions issues on, above, and surrounding the elevator opening (sprinklers, call buttons, HVAC, etc.)
- ☐ Field verify elevator opening measurements prior to ordering systems
- ☐ Available 120 VAC (M200/400) and 220 VAC (M400 battery option) circuit with 2 amp capacity per unit
- ☐ Fire alarm system has local auxiliary contacts available
- ☐ No auxiliary rails: elevator door frame is ferromagnetic