

**BUILDING C - COMMON AREA / 17 UNITS**

WD-02 Patrick Lumber Hemlock 34880 SF @ \$ 28.10 -----\$ 980,128.00

WD-05 Kaswell Mesquite 1310 SF @ \$ 24.00 -----\$ 31,440.00

WD-07 Arrigoni Frank Town 4080 SF @ \$ 26.80 -----\$ 109,344.00

WD-01.01 Arrigoni Saas Fee 7.5" - 30130 SF @ \$ 23.70 -----\$ 714,081.00

WD-01.02 Arrigoni Saas Fee 9.5" - 3300 SF @ \$ 26.40 -----\$ 87,120.00

Corridor Carpet TBD ( Allowance \$ 9.20 per SF ) -----\$ 19,045.00

CP-01 Softer Than Sisal 17500 SF @ \$ 8.90 -----\$ 155,750.00

Pad 3/8 5Lb 1945 SY @ \$ 3.60 -----\$ 7,002.00

CP-02 Mats Inc Recess Mat -----\$ 2,140.00

RF-01 Armstrong Medintec ( DROPPED ) Replacement Mixed & Variegated -----\$ 27,320.00

2mm Sound Barrier with accustical Bostic adhesive 38800 SF @ \$ 4.00 -----\$ 155,200.00

Wood Freight / Storage 73700 SF @ \$ 2.70 -----\$ 198,990.00

4" Standard rubber base for Stairs and BOH -----\$ 3,200.00

Transitions ( For wood, concrete, resilient ) -----\$ 2,800.00

**TOTAL FOR BUILDING C ----- \$ 2,493,560.00**



**BUILDING A 17 UNITS ONLY - No Common Area Included**

**WD-01.01 Arrigoni Saas Fee 7.5" - 24990 SF @ \$ 23.70 -----\$ 592,263.00**

**WD-01.02 Arrigoni Saas Fee 9.5" - 5780 SF @ \$ 26.40 -----\$ 152,592.00**

**WD-02 Patrick Lumber Hemlock 26400 SF @ \$ 28.10 -----\$ 741,840.00**

**CP-01 Softer Than Sisal 11950 SF @ \$ 8.90 -----\$ 106,355.00**

**2mm Sound Barrier 30770 SF @ \$ 4.00 -----\$ 123,080.00**

**Pad 3/8 5Lb 1325 SY @ \$ 3.60 -----\$ 4,770.00**

**Transitions -----\$ 500.00**

**Wood Freight / Storage 57170 SF @ \$ 2.70 -----\$ 154,359.00**

**TOTAL FOR BUILDING A -----\$ 1,875,759.**



**BUILDING B - 23 UNITS ONLY - No Common Area Included**

WD-01.01 Arrigoni Saas Fee 7.5" - 35200 SF @ \$23.70 ----- \$ 834,240.00

WD-01.02 Arrigoni Saas Fee 9.5" - 5650 SF @ \$ 26.40 ----- \$ 149,160.00

WD-02 Patrick Lumber Hemlock 34980 SF @ \$ 28.10 ----- \$ 982,938.00

CP-01 Softer Than Sisal 16420 SF @ \$ 8.90 ----- \$ 146,138.00

2mm Sound Barrier 40850 SF @ \$ 4.00 ----- \$ 163,400.00

Pad 3/8 5Lb 1820 SY @ \$ 3.60 ----- \$ 6,552.00

Transitions ----- \$ 500.00

Wood Freight / Storage 75830 SF @ \$ 2.70 ----- \$ 204,741.00

**TOTAL FOR BUILDING B ----- \$ 2,487,669.00**



## **Request for Information #1**

### **Sommet Blanc-Building C**

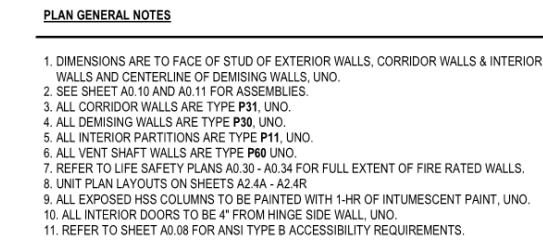
1. All Electrical & Control Rooms on Level P1 – The finish plan on A2.5C.01 do not show any finishes for these areas. Please clarify floor/base finishes. Assumed that these areas are to receive a Sealed Concrete (Not in Scope) w/Rubber Base finish for our takeoff.
2. All Storage & Trash Rooms on Level P1 – The finish plan on A2.5C.01 do not show any finishes for these areas. Please clarify floor/base finishes. Assumed that these areas are to receive a Sealed Concrete (Not in Scope) w/no base for our takeoff.
3. All Egress Stairs 05 & 06 - The finish plan on A2.5C.01 thru A2.5C.12 do not show any finishes for these areas. Please clarify floor/base finishes. Assumed that these areas are to receive a Sealed Concrete (Not in Scope) w/Rubber Base finish for our takeoff.
4. RF-01 Areas – The finish plans or finish legends do not specify what type of base is to be used in these areas. Please clarify the base type to be used in these areas. Assumed that these areas are to receive a 4"H Flash Cove base for our takeoff.
5. Elevator Cab – The finish plan on A2.5C.01 thru A2.5C.12 do not show any finishes for this area. Please clarify. Assumed that this area is to receive WD-07 for our takeoff.
6. Stairs that go from Entry Lobby C001 to Skier Lounge C101 – Finish plan A2.5C.01 & A2.5C.11 do not show a floor finish. Please clarify floor finish for these stairs. No floor finish figured for these stairs, excluded from our takeoff until clarified.
7. Corridors C241, C251, C341, C351, C441, C451, C541, C551, C641, C651, C741, C751, C841 & C851 – Finish plan A2.5C.12 have the floor material listed as TBD. Please clarify floor/base finish in these areas. Assumed that a 12' Broadloom Carpet w/Wood Base (Not in Scope) is to be used for these areas for our takeoff.



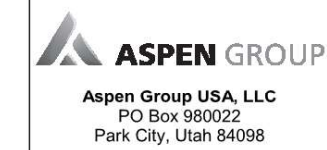


8. All Electrical Rooms on Level 8 – The finish plan on A2.5C.12 do not show any finishes for these areas. Please clarify floor/base finishes. Assumed that these areas are to receive a Sealed Concrete (Not in Scope) w/Rubber Base finish for our takeoff.
9. Mechanical C801 – The finish plan on A2.5C.12 do not show any finishes for this area. Please clarify floor/base finishes. Assumed that this area is to receive a Sealed Concrete (Not in Scope) w/no base for our takeoff.





**Olson Kundig**  
159 South Jackson St., Suite 800  
Seattle, Washington 98104 USA  
+1 206 424 9670 [olsonkundig.com](http://olsonkundig.com)



**Pool Consultant**  
**Cloward H20**  
2696 N University Ave, Suite 290  
Provo, UT 84604

**Landscape Architect**  
**EPG Design**  
6949 South High Tech Drive, Suite 100  
Midvale, Utah 84047

Specifications Writer  
**Friday Group**  
88 Mainelli Road  
Middlebury, VT

Code Consultant  
**Holmes**  
600 1st Avenue, Suite 200A  
Seattle, WA 98104

Fire Protection Engineer  
**Jensen Hughes**  
One Research Drive, Suite 306C  
Westborough, MA 01581

Vertical Transportation Consultant  
**Lerch Bates**  
19515 North Creek Parkway, Suite 304  
Bothell, WA 98011

**Structural Engineer**  
**Magnusson Klemencic Associates**  
1301 5th Ave, Suite 3200  
Seattle, WA 98101

**Lighting Designer**  
O.  
1319 SE MLK Blvd, Suite 210  
Portland, Oregon 97219

**Building Envelope Consultant**  
**RDH**  
2101 N 34th St  
Seattle, WA 98103

Accessibility Consultant  
Studio Pacifica  
2144 Westlake Ave N, Suite F  
Seattle, WA 98109

MEP Engineer  
WSP USA  
1001 Fourth Ave., Suite 3100  
Seattle, WA 98154

principal architect	TK, KM
project manager	TM, JB, LB
drawn by	SK, AL, JR, SS, E

checked by Checker  
job no. 20652

revisions:

---

---

---

---

---

---

---

---

---

---

---

---

no.	1 Date	Revision	b
	date		

TOWER C PRICING SET

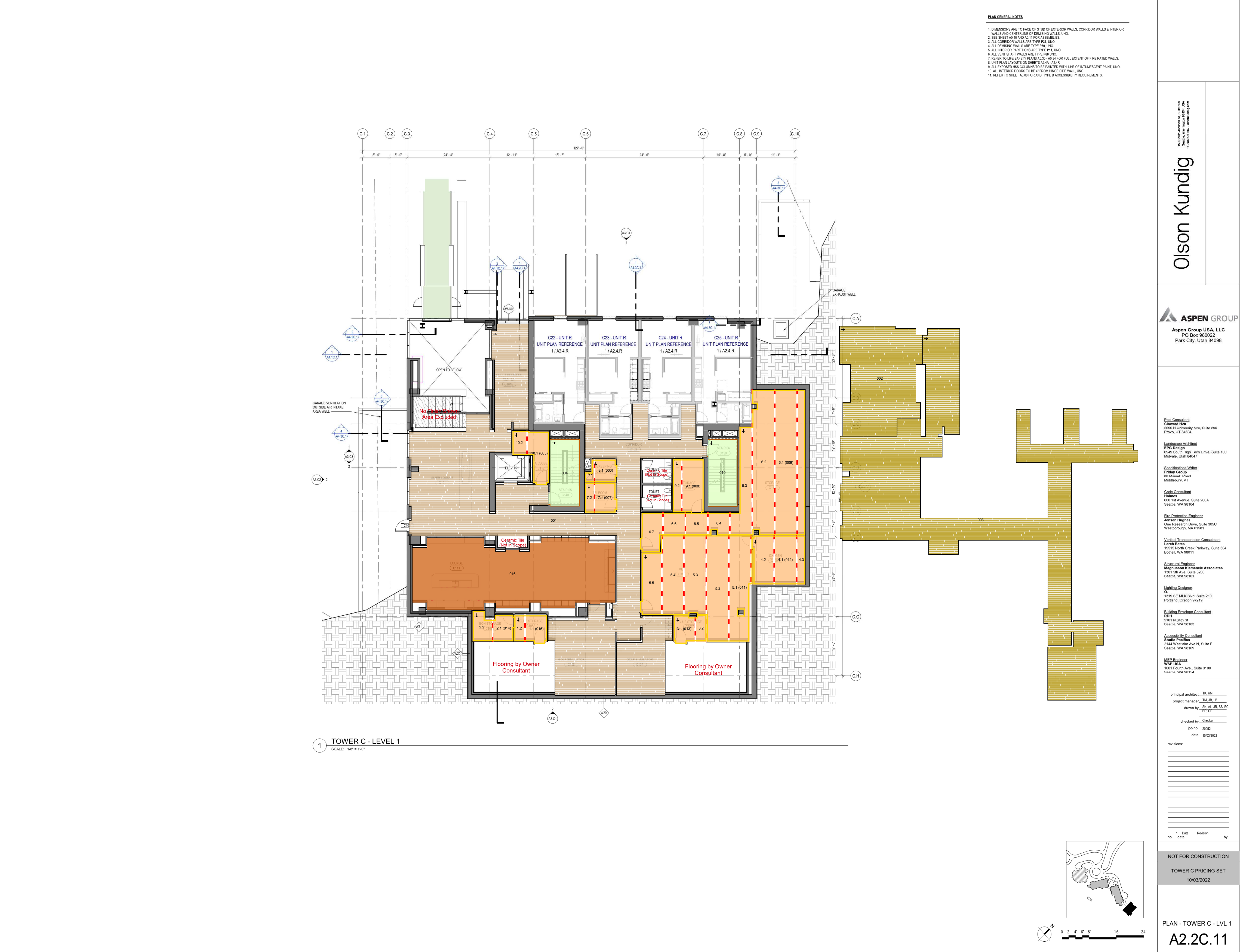
10/03/2022	
------------	--

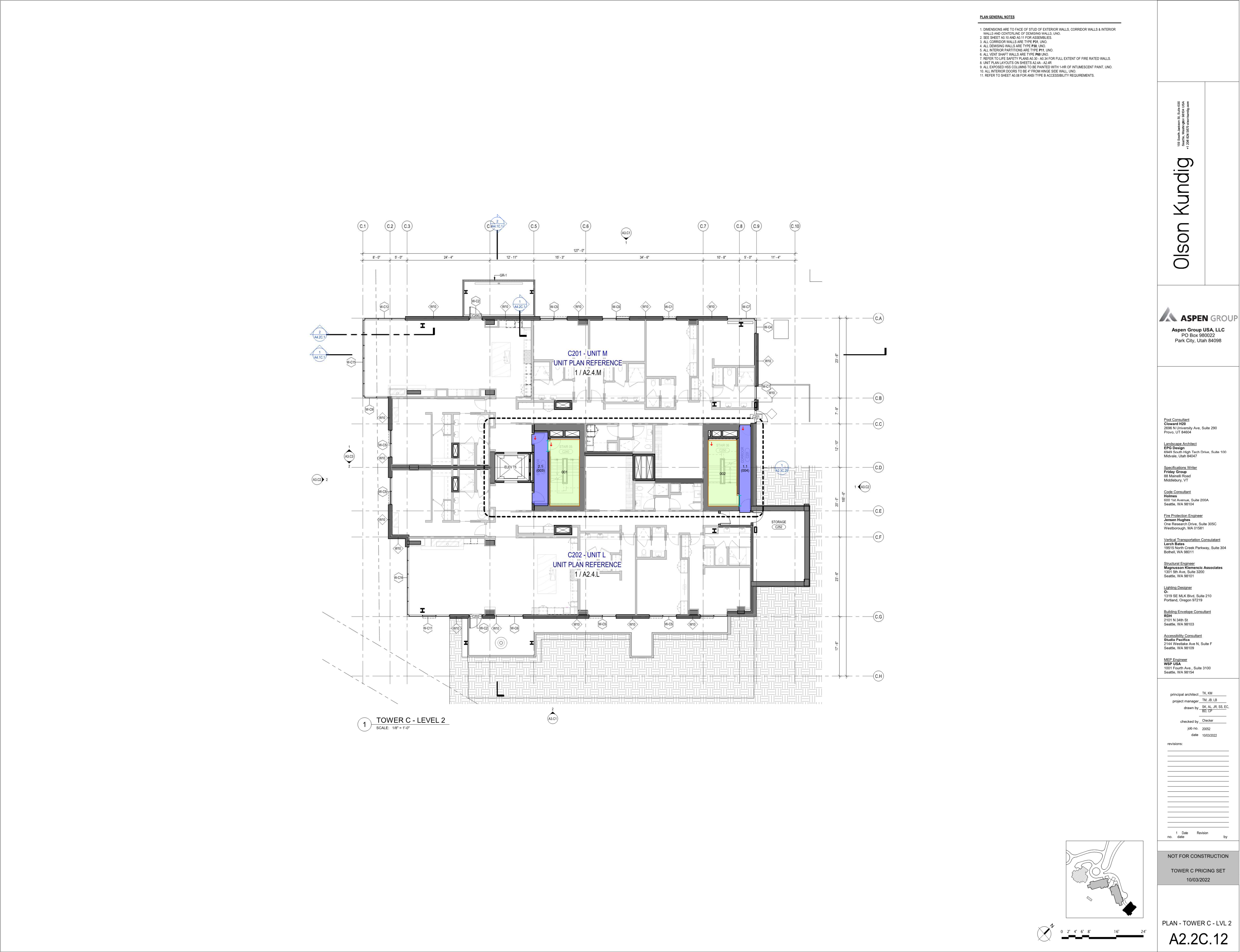
PLAN - TOWER C - LVL  
P1

A2.2C.01

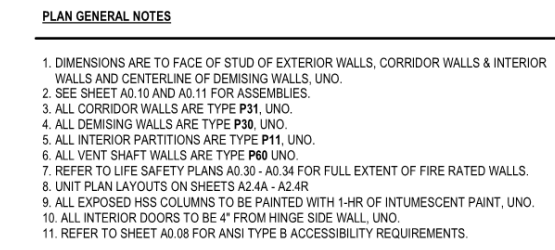
☐ Transition Carpet to Wood



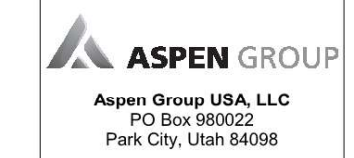








**Olson Kundig**  
150 South Jackson St. Suite 850  
Seattle, Washington 98144 USA  
+1 206 624 6870 [olsonkundig.com](mailto:olsonkundig.com)



**Pool Consultant**  
**Cloward H2O**  
2695 N University Ave, Suite 290  
Provo, UT 84604

**Landscape Architect**  
**EPG Design**  
6949 South High Tech Drive, Suite 100  
Midvale, Utah 84047

Specifications Writer  
**Friday Group**  
88 Mainelli Road  
Middlebury, VT

Code Consultant:  
**Holmes**  
600 1st Avenue, Suite 200A  
Seattle, WA 98104

**Fire Protection Engineer**  
**Jensen Hughes**  
One Research Drive, Suite 200  
San Jose, CA 95128-4000  
408/297-1000

**Vertical Transportation Consultant**  
**Lerch Bates**  
19515 North Creek Parkway, Suite 300

**Structural Engineer**  
**Magnuson Klemencic Associates**  
1301 9th Ave., Suite 1200

**Lighting Designer**  
O.

**Building Envelope Consultant**  
**RDH**

**Accessibility Consultant**  
**Studio Pacifica**

2144 Westlake Ave N, Suite  
Seattle, WA 98109

MEP Engineer

1001 Fourth Ave., Suite 3100  
Seattle, WA 98154

principal architect TK, KM  
project manager TM, JB, LB  
drawn by SK, AL, JR, SS, EC

checked by Checker  
job no. 20062

date 10/03/2022

revisions:

---

---

---

---

---

---

---

---

---

---

---

---

---

---

---

no.	date	by
-----	------	----

NOT FOR CONSTRUCTION

TOWER C PRICING SET  
10/03/2022

100

PLAN - TOWER C - LVL 1

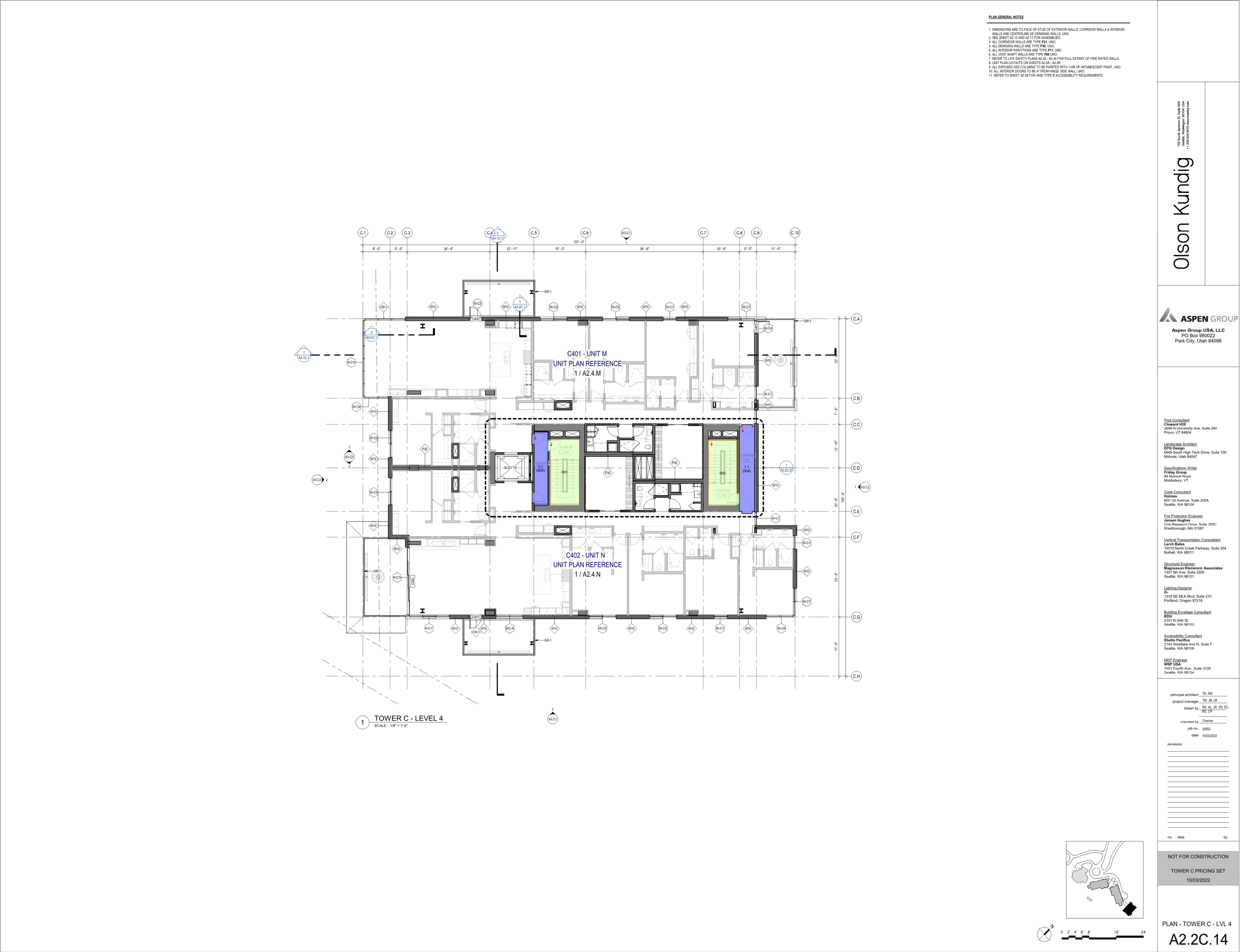
A2.2C.13

Corridor Carpet, TBD 12' Broadloom w/No Pattern Repeat

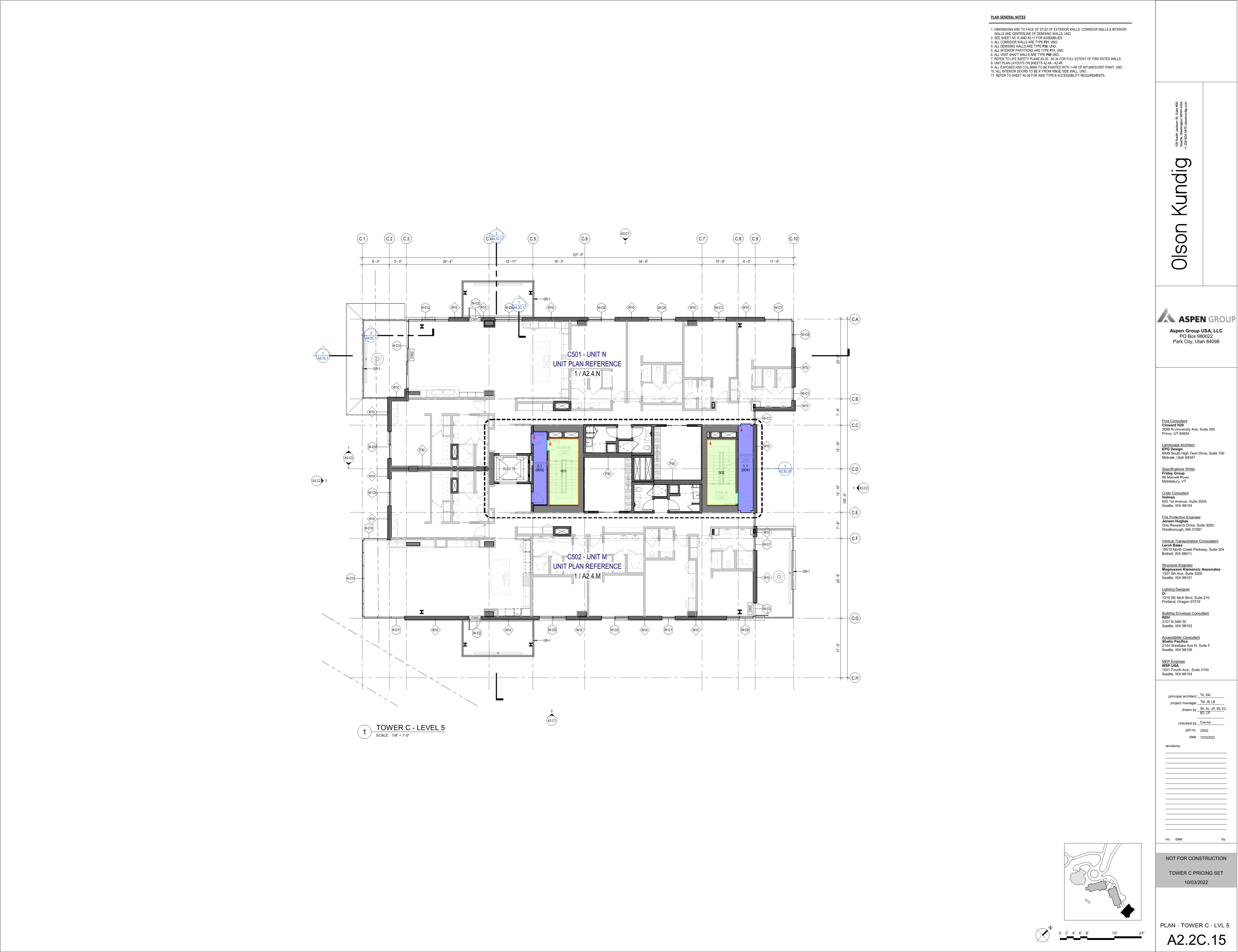
■ Stairs-Rubber Base, TBD

■ Stairs-Sealed Concrete, TBD (Not in Scope)

Transition Carpet to Sealed Concrete

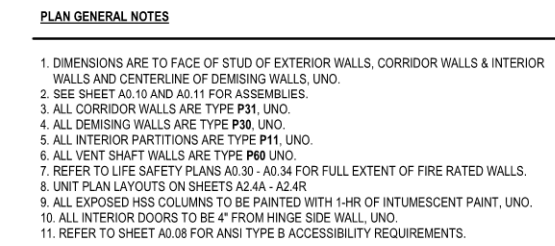




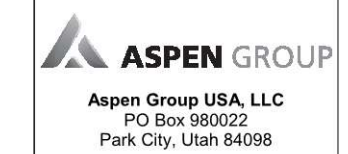








**Olson Kundig**  
150 South Jackson St., Suite 600  
Seattle, Washington 98104, USA  
+1 206 457 5070 [www.olsonkundig.com](http://www.olsonkundig.com)



**Pool Consultant**  
**Cloward H2O**  
2696 N University Ave, Suite 290  
Provo, UT 84604

Landscape Architect  
EPG Design  
6949 South High Tech Drive, Suite 100  
Midvale, Utah 84047

**Specifications Writer**  
**Friday Group**  
88 Mainelli Road  
Middlebury, VT

**Code Consultant**  
**Holmes**  
600 1st Avenue, Suite 200A  
Seattle, WA 98104

**Fire Protection Engineer**  
**Jensen Hughes**  
One Research Drive, Suite 305C  
Westborough, MA 01581

**Vertical Transportation Consultant**  
**Lerch Bates**  
19515 North Creek Parkway, Suite 304  
Bothell, WA 98011

Structural Engineer  
Magnusson Klemencic Associates  
1301 5th Ave, Suite 3200  
Seattle, WA 98101

**Lighting Designer**  
O-  
1319 SE MLK Blvd, S  
Portland, Oregon 972

**Building Envelope Consultant**  
**RDH**  
2101 N 34th St  
Seattle, WA 98103

**Accessibility Consultant**  
**Studio Pacifica**  
2144 Westlake Ave N, Suite F  
Seattle, WA 98109

MEP Engineer  
WSP USA  
1001 Fourth Ave., Suite 3100  
Seattle, WA 98154

principal architect TK, KM  
project manager TM, JB, LB  
drawn by SK, AL, JR, SS, EC

checked by Checker  
job no. 20052

revisions:

---

---

---

---

---

---

---

---

---

---

---

---

---

no.	date	by

NOT FOR CONSTRUCTION

TOWER C PRICING SET

10/03/2022
------------

PLAN, TOWER C, LEVEL 1

A2.2C.17

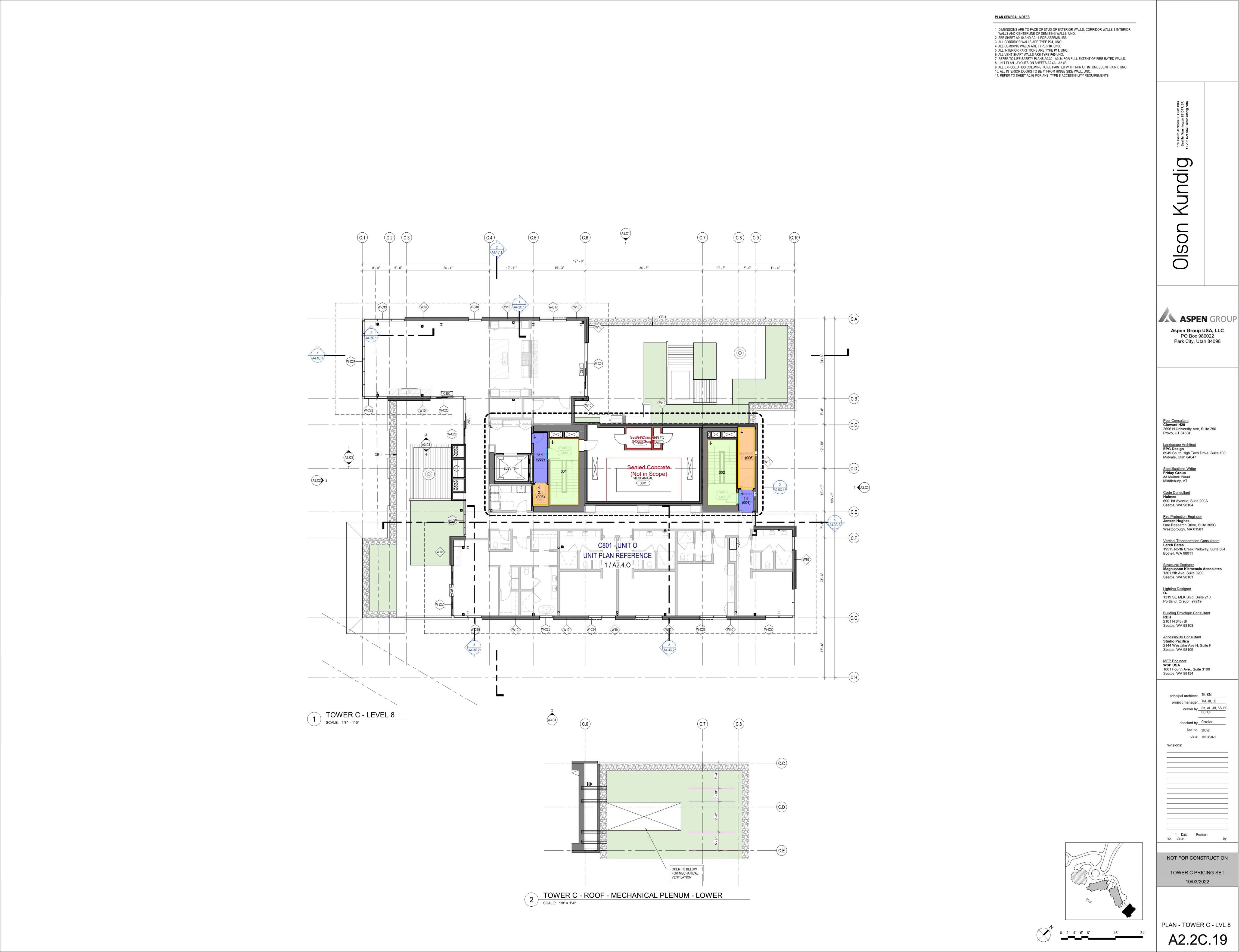
---

Corridor Carpet, TBD 12' Broadloom w/No Pattern Repeat

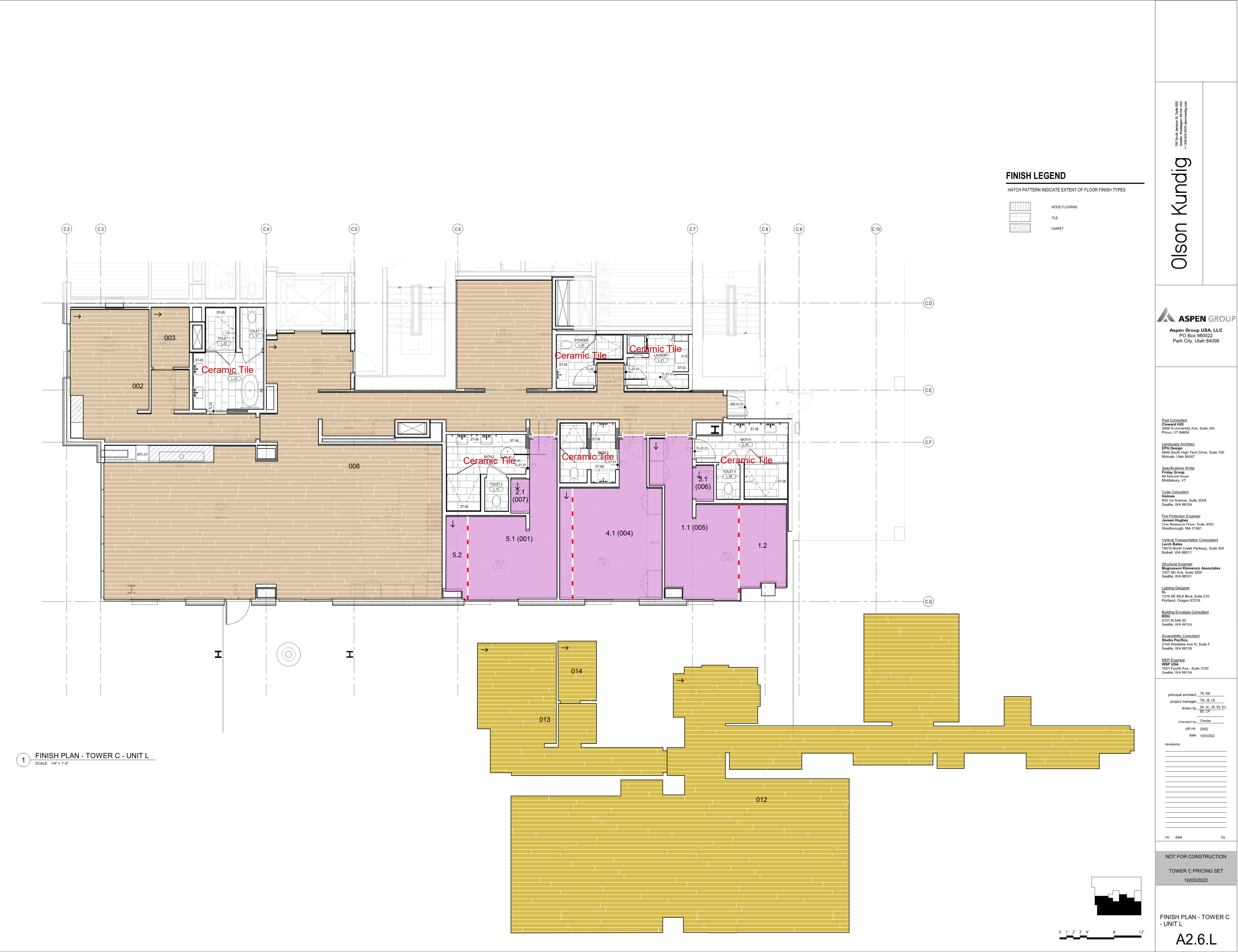
Stairs-Rubber Base, TBD

■ Stairs-Sealed Concrete, TBD (Not in Scope)

Transition Carpet to Sealed Concrete







100 South Main Street, Suite 200  
Seattle, Washington 98104 USA  
+1 206 461 0000  
olsonkundig.com

Olson Kundig

**ASPEN GROUP**  
Aspen Group USA, LLC  
PO Box 980022  
Park City, Utah 84098

**Design Consultant**  
Cloward HDB  
2900 N University Ave, Suite 290  
Provo, UT 84604

**Landscape Architect**  
EPG Design  
6949 South High Tech Drive, Suite 100  
Midvale, Utah 84047

**Specifications Writer**  
Finley Group  
88 Main Street  
Middlebury, VT

**Code Consultant**  
Holmes  
600 1st Avenue, Suite 200A  
Seattle, WA 98104

**Fire Protection Engineer**  
James Hughes  
One Renaissance Drive, Suite 305C  
Westborough, MA 01581

**Vertical Transportation Consultant**  
Lynch Bates  
19915 North Creek Parkway, Suite 304  
Bellevue, WA 98011

**Structural Engineer**  
Magnuson Klemm Associates  
1301 9th Ave, Suite 3000  
Seattle, WA 98101

**Lighting Designer**  
Ox  
1518 SE MLK Blvd, Suite 210  
Portland, Oregon 97219

**Building Envelope Consultant**  
RDM  
2101 N 34th St  
Seattle, WA 98103

**Accessibility Consultant**  
Studio Pacifica  
2145 University Ave N, Suite F  
Seattle, WA 98109

**MEP Engineer**  
WSP USA  
1021 Fourth Ave, Suite 3100  
Seattle, WA 98104

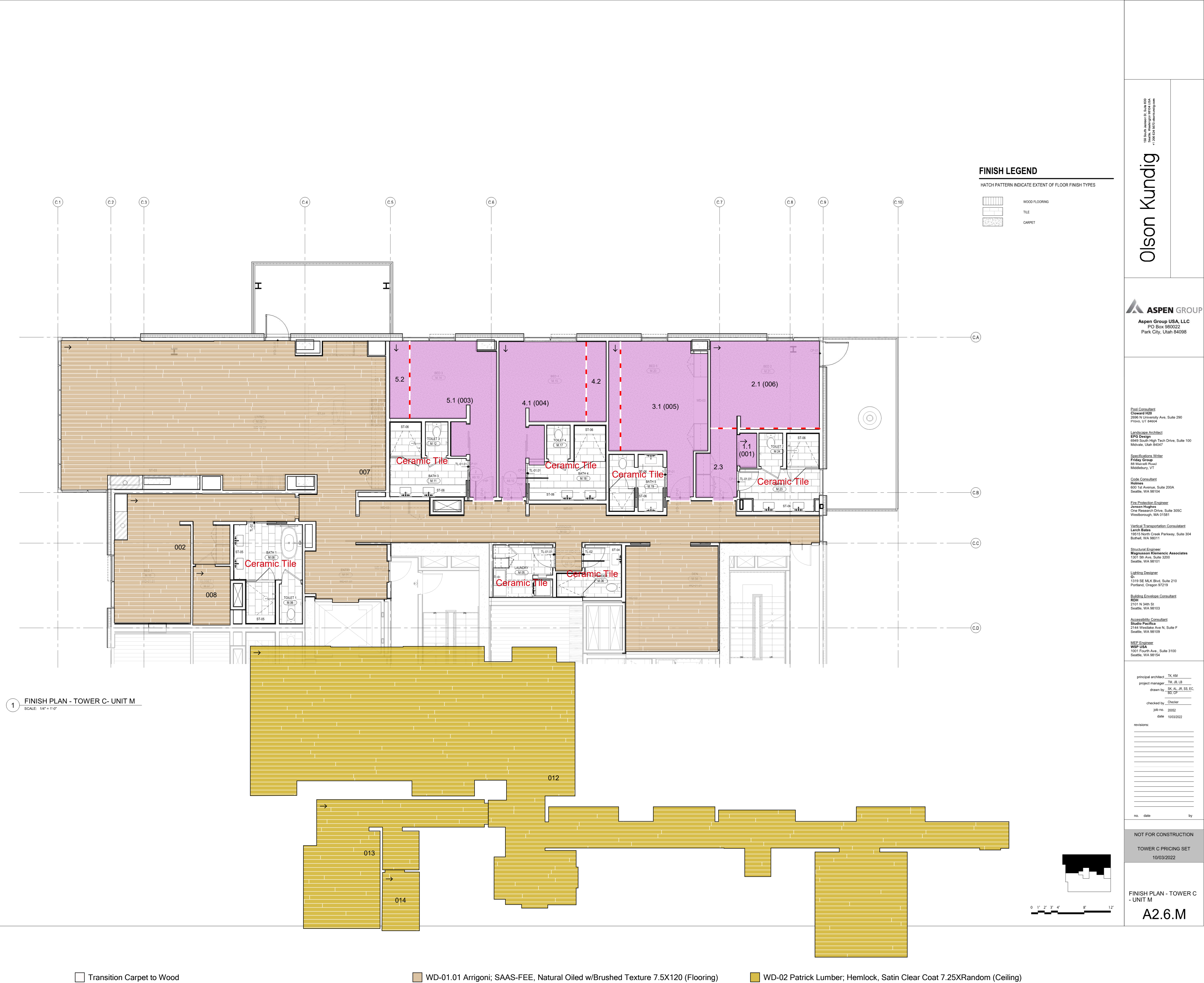
principal architect: TK, KM  
project manager: TM, JS, LB  
drawn by: JS, LB, RS, EC  
checked by: Checker  
job no: 20002  
date: 10/03/2022

revisions:  

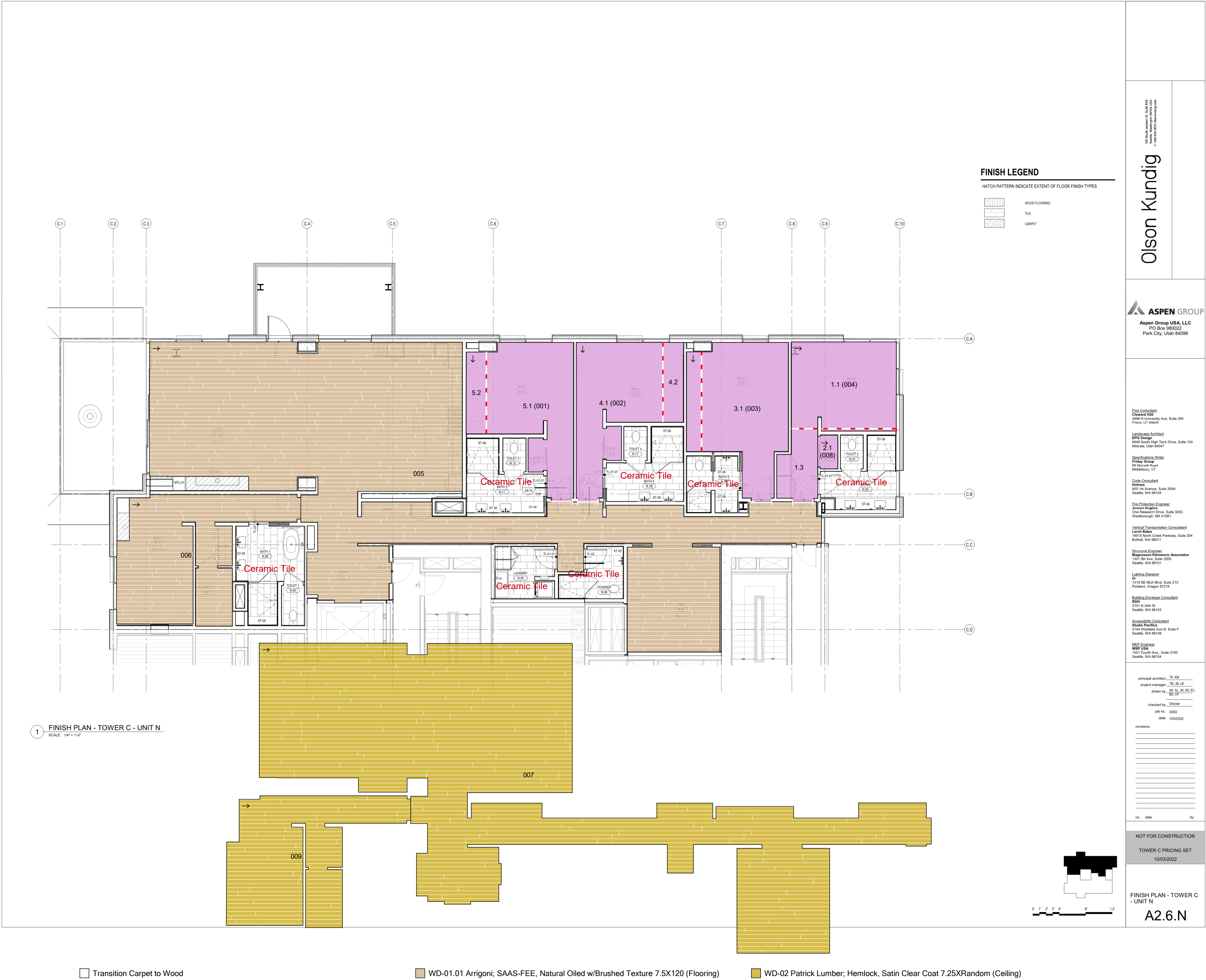
no.	date	by

NOT FOR CONSTRUCTION  
TOWER C PRICING SET  
10/03/2022

FINISH PLAN - TOWER C  
- UNIT L  
**A2.6.L**











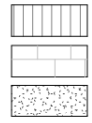




1 FINISH PLAN - TOWER C - UNIT R  
SCALE: 1/4" = 1'-0"

## FINISH LEGEND

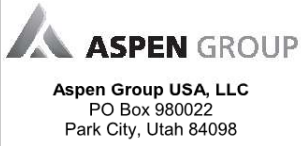
HATCH PATTERN INDICATE EXTENT OF FLOOR FINISH TYPES



WOOD FLOORING

TILE

CARPE®



**Pool Consultant**  
**Cloward H2O**  
2696 N University Ave, Suite 290  
Provo, UT 84604

**Landscape Architect**  
**EPG Design**  
6949 South High Tech Drive, Suite 100  
Midvale, Utah 84047

Specifications Writer  
**Friday Group**  
 88 Mainelli Road  
 Middlebury, VT

**Code Consultant**  
**Holmes**  
600 1st Avenue, Suite 200A  
Seattle, WA 98104

**Fire Protection Engineer**  
**Jensen Hughes**  
One Research Drive, Suite 306C  
Westborough, MA 01581

**Vertical Transportation Consultant**  
**Lerch Bates**  
19515 North Creek Parkway, Suite 304  
Bothell, WA 98011

**Structural Engineer**  
**Magnusson Klemencic Associates**  
1301 5th Ave, Suite 3200  
Seattle, WA 98101

**Lighting Designer**  
O.  
1319 SE MLK Blvd, Suite 2  
Portland, Oregon 97219

**Building Envelope Consultants**  
**RDH**  
2101 N 34th St  
Seattle, WA 98103

**Accessibility Consultant**  
**Studio Pacifica**  
2144 Westlake Ave N, Suite  
Seattle, WA 98109

**MEP Engineer**  
**WSP USA**  
1001 Fourth Ave., Suite 310  
Seattle, WA 98154

principal architect TK, KM  
project manager TM, JB, LB  
drawn by SK, AL, JR, SS, E

checked by Over  
job no. 2005

revisions:

---

---

---

---

---

---

---

---

---

---

---

---

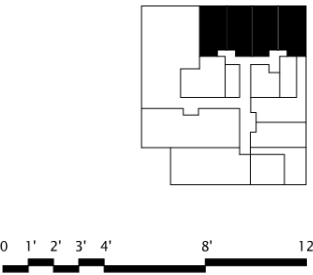
no.	date	b

TOWER C PRICING SET

10/03/2022

FINISH PLAN - TOWER  
UNIT B

A2.6.R



WD-01.01 Arrigoni; SAAS-FEE, Natural Oiled w/Brushed Texture 7.5X120 (Flooring)