

**PROJECT: 15723 - ASPEN GROUP - SOMMET  
BLANC****DIVISION: DOOR HARDWARE  
DATE: 8/12/2022****CLIENT**

Aspen Group

**PROJECT ADDRESS**Deer Valley  
Park City, UT 84098**PREPARED BY**Hunter Silvester  
hunter.s@earthelements.com**ROOM: EARTH**

SPACE: 1 - DOOR HARDWARE

FINISH AREA	MANUFACTURER	ITEM	QTY	UoM	PRICE	TOTAL
Door Hardware - Entry Set - Patio	Sun Valley Bronze	<b>Novus Round Plate Mortise Lock Entry Patio Function With Trim Set (TS-RP-N926ML-PF)</b> Notes: Finish :S3, ***SAMPLE RFID LOCK WILL BE REQUIRED FOR PRODUCTION*** Remarks: **ITEM SUPPLIED BY REP*PLEASE CONFIRM**	1	x EACH	\$469.20	\$469.20
Door Hardware - Pocket - Passage	Sun Valley Bronze	<b>Complete Pocket Passage Set With Interior Mortise Lock (CS-FP202IML)</b> Notes: Finish :S3 Remarks: **ITEM SUPPLIED BY REP*PLEASE CONFIRM**	1	x EACH	\$393.00	\$393.00
Door Hardware - Pocket - Privacy	Sun Valley Bronze	<b>Contemporary Complete Pocket Door Privacy Set W/Interior Mortise Lock (CS-FP203IML-PR)</b> Notes: Finish :S3 Remarks: **ITEM SUPPLIED BY REP*PLEASE CONFIRM**	1	x EACH	\$505.20	\$505.20
Door Hardware - Swing - Privacy	Sun Valley Bronze	<b>Novus Tubular Privacy Complete Set W/Latch And Spindle (CS-RP-N926PR)</b> Notes: Lever : L-129 , Finish :S3	1	x EACH	\$437.40	\$437.40
Door Hardware - Swing - Passage	Sun Valley Bronze	<b>Novus Tubular Passage Complete Set W/Latch And Spindle (CS-RP-N926)</b> Notes: Lever : L-129 , Finish :S3	1	x EACH	\$406.80	\$406.80
Door Hardware - Swing - Dummy	Sun Valley Bronze	<b>Novus Full Dummy With Trim Set (TS-RP-N926FD)</b> Notes: Lever : L-129 , Finish :S3	1	x EACH	\$325.20	\$325.20
Door Hardware - Swing - Dummy	Sun Valley Bronze	<b>Novus Half Dummy With Trim Set (TS-RP-N926HD)</b> Notes: Lever : L-129 , Finish :S3	1	x EACH	\$163.80	\$163.80
Door Hardware - Accessories - Door Stop	Sun Valley Bronze	<b>Floor Mount Door Stop W/Rubber Ring Bumper 2" L (DS-6)</b> Notes: Finish :S3 Remarks: **ITEM SUPPLIED BY REP*PLEASE CONFIRM**	1	x EACH	\$72.60	\$72.60
Door Hardware - Pulls - Option	Sun Valley Bronze	<b>Contemporary Grip Handle 23 15/16" C-C (GH-924)</b> Notes: Finish :S3 Remarks: ***ADDITIONAL ITEM NEEDED*NOT ON FINISH SCHEDULE***	1	x EACH	\$473.40	\$473.40

## SPACE: 2 - CABINET HARDWARE

Door Hardware - Pulls	Sun Valley Bronze	<b>Edge Mount Cabinet Pull 6"L (CK-502-6)</b> Notes: Finish :S3	1	x EACH	\$93.60	\$93.60
Door Hardware - Pulls	Emtek Products	<b>Contemporary Cabinet Edge Pull 6" C-C, Flat Black (87120US19)</b>	1	x EACH	\$10.78	\$10.78
Door Hardware - Pulls	Sun Valley Bronze	<b>Cabinet Hardware, 24" Contemporary Cabinet Pull 23 3/16", S3 (CK-956)</b> Notes: Finish :S3	1	x EACH	\$155.40	\$155.40

**NOTES:**

Estimate based on selections dated 8/3/2022 and mail dated 8/11/2022

**PAYMENT TERMS:**

The Deposit Invoice payment is REQUIRED before the goods are ORDERED. Full payment is REQUIRED before delivery.

FINISHES

\$3,506.38

LABOR

-

SHIPPING

-

SALES TAX

\$250.71

**TOTAL AMOUNT****\$3,757.09**

REQUIRED DEPOSIT

\$1,878.54

The prices quoted on your estimate or sales order have been calculated based on the current prices for the component materials. However, due to volatile markets and imposition of tariffs, taxes and assessments, sudden price increases may occur. Earth Elements agrees to use its best efforts to obtain the lowest possible prices from available suppliers, but should there be an increase in prices of these specified materials that are purchased after execution of this agreement for 15723 - Aspen Group - Sommet Blanc, Aspen Group agree to pay the additional charge. Any claim by Earth Elements for payment of such an additional charge shall require written notice delivered to you stating the additional charge, the material or materials in question, and the source of supply, supported by invoices or bills of sale.

**ESTIMATE IS VALID FOR 30 DAYS.**

Should you have any discrepancies or changes please contact your sales associate. Once you have confirmed the estimate as approved, a sales order will be emailed requesting your signature for approval, and required deposit terms. Orders cannot be placed until approval signature and deposit have been received.

2 out of 2



EARTH ELEMENTS  
DESIGN CENTER

# **15723 - Aspen Group - Sommet Blanc**

**FINISH SCHEDULE & WALKTHROUGH**

**DOOR HARDWARE**

**AUGUST 12, 2022**

4212 N FORESTDALE DRIVE SUITE 300 | PARK CITY | 84098

Table of Contents

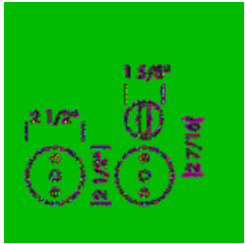
DOOR HARDWARE

AIR

1 - Door Hardware 3

2 - Cabinet Hardware 4

AIR



1 - Door Hardware / Door Hardware - Entry Set - Patio
QTY 1

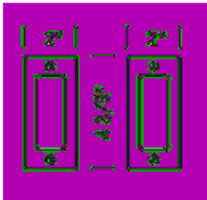
**Novus Round Plate Mortise Lock Entry Patio Function With Trim Set**

- Novus Round Plate Mortise Lock Entry Patio Function With Trim Set • Trim Set Only • No Lock

FINISH  
LENGTH      WIDTH      HEIGHT  
MANUFACTURER Sun Valley Bronze

TECH DATA

CARE



1 - Door Hardware / Door Hardware - Pocket - Passage
QTY 1

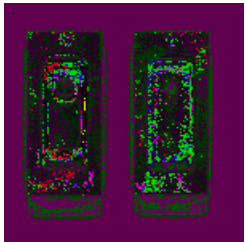
**Complete Pocket Passage Set With Interior Mortise Lock**

- Complete Passage Set With Interior Mortise Lock

FINISH  
LENGTH      WIDTH      HEIGHT  
MANUFACTURER Sun Valley Bronze

TECH DATA

CARE



1 - Door Hardware / Door Hardware - Pocket - Privacy
QTY 1

**Contemporary Complete Pocket Door Privacy Set W/Interior Mortise Lock**

- Contemporary Complete Pocket Door Privacy Set With Interior Mortise Lock • 2 x 4 3/8"

FINISH  
LENGTH      WIDTH      HEIGHT  
MANUFACTURER Sun Valley Bronze

TECH DATA

CARE



1 - Door Hardware / Door Hardware - Swing - Privacy
QTY 1

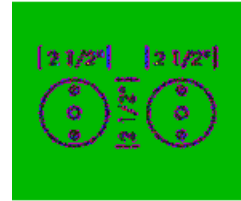
**Novus Tubular Privacy Complete Set W/Latch And Spindle**

- Novus Tubular Privacy Complete Set With Latch And Spindle

FINISH  
LENGTH      WIDTH      HEIGHT  
MANUFACTURER Sun Valley Bronze

TECH DATA

CARE



1 - Door Hardware / Door Hardware - Swing - Passage
QTY 1

**Novus Tubular Passage Complete Set W/Latch And Spindle**

- Novus Tubular Passage Complete Set With Latch And Spindle

FINISH  
LENGTH      WIDTH      HEIGHT  
MANUFACTURER Sun Valley Bronze

TECH DATA



1 - Door Hardware / Door Hardware - Swing - Dummy
QTY 1

**Novus Full Dummy With Trim Set**

- Novus Full Dummy With Trim Set • No Latch

FINISH  
LENGTH      WIDTH      HEIGHT  
MANUFACTURER Sun Valley Bronze

TECH DATA



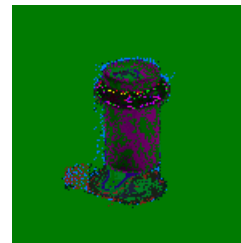
1 - Door Hardware / Door Hardware - Swing - Dummy
QTY 1

**Novus Half Dummy With Trim Set**

- Novus Full Dummy With Trim Set • No Latch

FINISH  
LENGTH      WIDTH      HEIGHT  
MANUFACTURER Sun Valley Bronze

TECH DATA



1 - Door Hardware / Door Hardware - Accessories - Door Stop
QTY 1

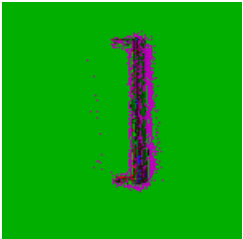
**Floor Mount Door Stop W/Rubber Ring Bumper 2" L**

- Floor Mount Door Stop With Rubber Ring Bumper 2" Length • Includes Mounting Hardware For Wood & Masonry Floors. • Available In Custom Lengths Up To 6"

FINISH  
LENGTH      WIDTH      HEIGHT  
MANUFACTURER Sun Valley Bronze

TECH DATA

CARE



1 - Door Hardware / Door Hardware - Pulls - Option

QTY 1

Contemporary Grip Handle 23 15/16" C-C

• Center To Center: 23 15/16" • Handle Width: 1 1/4"

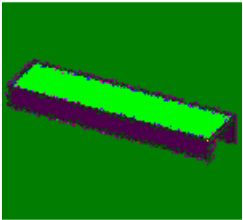
FINISH

LENGTH      WIDTH      HEIGHT

MANUFACTURER Sun Valley Bronze

TECH DATA

CARE



2 - Cabinet Hardware / Door Hardware - Pulls

QTY 1

Edge Mount Cabinet Pull 6"L

• Edge Mount Cabinet Pull 6" Length • Width: 1 7/16" • Height: 5/8"

FINISH

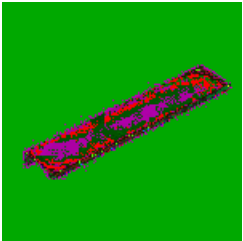
LENGTH 6"      WIDTH 1 7/16"      HEIGHT 5/8"

MANUFACTURER Sun Valley Bronze

TECH DATA

INSTALL

CARE



2 - Cabinet Hardware / Door Hardware - Pulls

QTY 1

Contemporary Cabinet Edge Pull 6" C-C, Satin Nickel

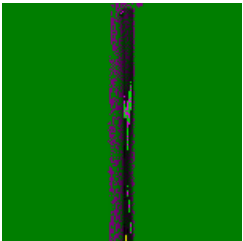
• Sold as complete set. Includes screws

FINISH Satin Nickel

LENGTH      WIDTH      HEIGHT

MANUFACTURER Emtek Products

TECH DATA



2 - Cabinet Hardware / Door Hardware - Pulls

QTY 1

Cabinet Hardware, 24" Contemporary Cabinet Pull 23 3/16", S3

CK-956 Contemporary Cabinet Pull 24 3/16" Also available in 4" (CK-950), 6" (CK-951), 12" (CK-954), 18" (CK-955) Other sizes and options available.

FINISH

LENGTH      WIDTH      HEIGHT

MANUFACTURER Sun Valley Bronze

TECH DATA

INSTALL

CARE

**PROJECT: 15723 - ASPEN GROUP - SOMMET  
BLANC****DIVISION: DOOR HARDWARE  
DATE: 8/12/2022****CLIENT**

Aspen Group

**PROJECT ADDRESS**Deer Valley  
Park City, UT 84098**PREPARED BY**Hunter Silvester  
hunter.s@earthelements.com**ROOM: AIR**

SPACE: 1 - DOOR HARDWARE

FINISH AREA	MANUFACTURER	ITEM	QTY	UoM	PRICE	TOTAL
Door Hardware - Entry Set - Patio	Sun Valley Bronze	<b>Novus Round Plate Mortise Lock Entry Patio Function With Trim Set (TS-RP-N926ML-PF)</b> Notes: Finish :W1, ***SAMPLE RFID LOCK WILL BE REQUIRED FOR PRODUCTION*** Remarks: **ITEM SUPPLIED BY REP*PLEASE CONFIRM**	1	x EACH	\$469.20	\$469.20
Door Hardware - Pocket - Passage	Sun Valley Bronze	<b>Complete Pocket Passage Set With Interior Mortise Lock (CS-FP202IML)</b> Notes: Finish :W1 Remarks: **ITEM SUPPLIED BY REP*PLEASE CONFIRM**	1	x EACH	\$393.00	\$393.00
Door Hardware - Pocket - Privacy	Sun Valley Bronze	<b>Contemporary Complete Pocket Door Privacy Set W/Interior Mortise Lock (CS-FP203IML-PR)</b> Notes: Finish :W1 Remarks: **ITEM SUPPLIED BY REP*PLEASE CONFIRM**	1	x EACH	\$505.20	\$505.20
Door Hardware - Swing - Privacy	Sun Valley Bronze	<b>Novus Tubular Privacy Complete Set W/Latch And Spindle (CS-RP-N926PR)</b> Notes: Lever : L-129 , Finish :W1	1	x EACH	\$437.40	\$437.40
Door Hardware - Swing - Passage	Sun Valley Bronze	<b>Novus Tubular Passage Complete Set W/Latch And Spindle (CS-RP-N926)</b> Notes: Lever : L-129 , Finish :W1 Remarks: ***ADDITIONAL ITEM NEEDED*NOT ON FINISH SCHEDULE***	1	x EACH	\$406.80	\$406.80
Door Hardware - Swing - Dummy	Sun Valley Bronze	<b>Novus Full Dummy With Trim Set (TS-RP-N926FD)</b> Notes: Lever : L-129 , Finish :W1 Remarks: ***ADDITIONAL ITEM NEEDED*NOT ON FINISH SCHEDULE***	1	x EACH	\$325.20	\$325.20
Door Hardware - Swing - Dummy	Sun Valley Bronze	<b>Novus Half Dummy With Trim Set (TS-RP-N926HD)</b> Notes: Lever : L-129 , Finish :W1 Remarks: ***ADDITIONAL ITEM NEEDED*NOT ON FINISH SCHEDULE***	1	x EACH	\$163.80	\$163.80
Door Hardware - Accessories - Door Stop	Sun Valley Bronze	<b>Floor Mount Door Stop W/Rubber Ring Bumper 2" L (DS-6)</b> Notes: Finish :W1 Remarks: **ITEM SUPPLIED BY REP*PLEASE CONFIRM**	1	x EACH	\$72.60	\$72.60
Door Hardware - Pulls - Option	Sun Valley Bronze	<b>Contemporary Grip Handle 23 15/16" C-C (GH-924)</b> Notes: Finish :W1 Remarks: ***ADDITIONAL ITEM NEEDED*NOT ON FINISH SCHEDULE***	1	x EACH	\$473.40	\$473.40

SPACE: 2 - CABINET HARDWARE

Door Hardware - Pulls	Sun Valley Bronze	<b>Edge Mount Cabinet Pull 6"L (CK-502-6)</b> Notes: Finish :W1	1	x EACH	\$93.60	\$93.60
-----------------------	-------------------	---	---	--------	---------	---------



Door Hardware - Pulls	Emtek Products	Contemporary Cabinet Edge Pull 6" C-C, Satin Nickel (87120US15)	1	x EACH	\$10.78	\$10.78
Door Hardware - Pulls	Sun Valley Bronze	Cabinet Hardware, 24" Contemporary Cabinet Pull 23 3/16", S3 (CK-956) Notes: Finish :W1	1	x EACH	\$155.40	\$155.40

**NOTES:**

Estimate based on selections dated 8/3/2022 and mail dated 8/11/2022

**PAYMENT TERMS:**

The Deposit Invoice payment is REQUIRED before the goods are ORDERED. Full payment is REQUIRED before delivery.

## FINISHES

\$3,506.38

## LABOR

-

## SHIPPING

-

## SALES TAX

\$250.71

**TOTAL AMOUNT****\$3,757.09**

## REQUIRED DEPOSIT

\$1,878.54

The prices quoted on your estimate or sales order have been calculated based on the current prices for the component materials. However, due to volatile markets and imposition of tariffs, taxes and assessments, sudden price increases may occur. Earth Elements agrees to use its best efforts to obtain the lowest possible prices from available suppliers, but should there be an increase in prices of these specified materials that are purchased after execution of this agreement for 15723 - Aspen Group - Sommet Blanc, Aspen Group agree to pay the additional charge. Any claim by Earth Elements for payment of such an additional charge shall require written notice delivered to you stating the additional charge, the material or materials in question, and the source of supply, supported by invoices or bills of sale.

**ESTIMATE IS VALID FOR 30 DAYS.**

Should you have any discrepancies or changes please contact your sales associate. Once you have confirmed the estimate as approved, a sales order will be emailed requesting your signature for approval, and required deposit terms. Orders cannot be placed until approval signature and deposit have been received.

2 out of 2