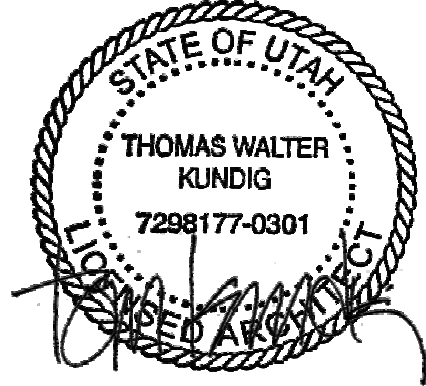


PLAN GENERAL NOTES

1. DIMENSIONS ARE TO FACE OF STUD OF EXTERIOR WALLS, CORRIDOR WALLS & INTERIOR WALLS, UNO.
2. DIMENSIONS ARE TO CENTERLINE OF DEMISING WALLS, UNO.
3. ALL EXPOSED STRUCTURAL STEEL TO RECEIVE 1 HR INTUMESCENT PAINTING, UNO.
4. AT FRAMED EXTERIOR WALLS, FRAMING TO BE SET BACK 5/8" FROM FACE OF CONCRETE TO ALLOW FOR FLUSH ALIGNMENT OF SHEATHING TO EDGE OF SLAB, UNO.
5. CASEWORK DIMENSIONS ARE TO FACE OF FINISH, UNO.
6. SEE SHEETS A0.10 AND A0.11 FOR ASSEMBLIES.
7. ALL CORRIDOR WALLS ARE TYPE IB, UNO.
8. ALL DEMISING WALLS ARE TYPE JB, UNO.
9. ALL INTERIOR PARTITIONS ARE TYPE A6, UNO.
10. ALL FURRING AROUND CONCRETE STRUCTURAL COLUMNS TYPE G1, UNO.
11. ALL VENT SHAFT WALLS ARE TYPE K4, UNO.
12. REFER TO LIFE SAFETY PLANS A0.30 - A0.34 FOR FULL EXTENT OF FIRE RATED WALLS.
13. UNIT PLAN LAYOUTS ON SHEETS A2.4A - A2.4R.
14. ALL OWNER PARKING STALLS SHALL INCLUDE EV INFRASTRUCTURE.
15. REFER TO SHEET A0.08 FOR ANSI TYPE B ACCESSIBILITY REQUIREMENTS.
16. REFER TO SHEET A0.07 FOR ANSI TYPE A ACCESSIBILITY REQUIREMENTS.
17. REFER TO SHEET A0.06 FOR ADA PUBLIC SPACE ACCESSIBILITY REQUIREMENTS.
18. ALL MECHANICAL EQUIPMENT LOCATED WITHIN ELEVATOR/MECHANICAL EQUIPMENT ENCLOSURE.



100 South Jackson St. Suite 600  
Seattle, Washington 98104 USA  
+1 206 824 6870 olsonkundig.com

Olson Kundig

SOMMET BLANC  
5500 MARSCA AVE  
PARK CITY, UT 84060



Aspen Group USA, LLC  
PO Box 980022  
Park City, Utah 84098

Pool Consultant  
Cloward H2O  
2006 N University Ave, Suite 290  
Provo, UT 84604

Landscape Architect  
EPG Design  
6949 South High Tech Drive, Suite 100  
Midvale, Utah 84047

Specifications Writer  
Friday Group  
88 Main St  
Middlebury VT

Code Consultant  
Holmes  
800 1st Avenue, Suite 200A  
Seattle, WA 98104

Fire Protection Engineer  
Jensen Hughes  
One Research Drive, Suite 305C  
Westborough, MA 01581

Vertical Transportation Consultant  
Lerch Bates  
19515 North Creek Parkway, Suite 304  
Bellevue, WA 98011

Structural Engineer  
Magnuson Hancock Associates  
1301 6th Ave, Suite 3200  
Seattle, WA 98101

Lighting Designer  
Q  
1319 SE MLK Blvd, Suite 210  
Portland, Oregon 97219

Building Envelope Consultant  
RDH  
2101 N 34th St  
Seattle, WA 98103

Accessibility Consultant  
Studio Pacifica  
2144 Westlake Ave N, Suite F  
Seattle, WA 98109

MEP Engineer  
WSP USA  
1001 Fourth Ave., Suite 3100  
Seattle, WA 98154

principal architect TK, KM  
project manager TM, JB, SL, MD  
drawn by SK, SS, JR, CP, EA  
checked by JB

job no. 2052  
date 05/17/2024

revisions:

no. date by

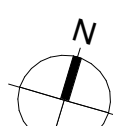
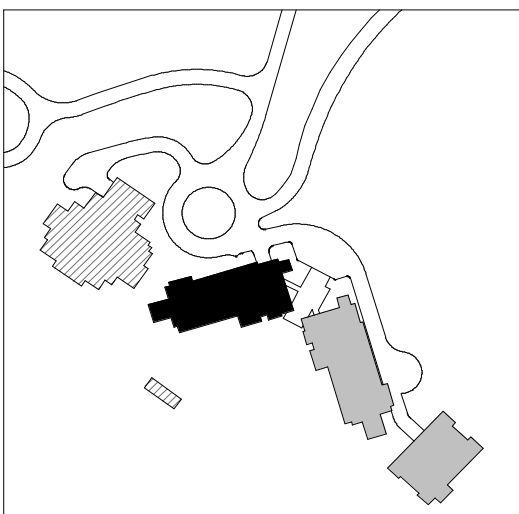
04/26/24 PLANNING PLAN  
REVIEW RESPONSE #1

no. date by

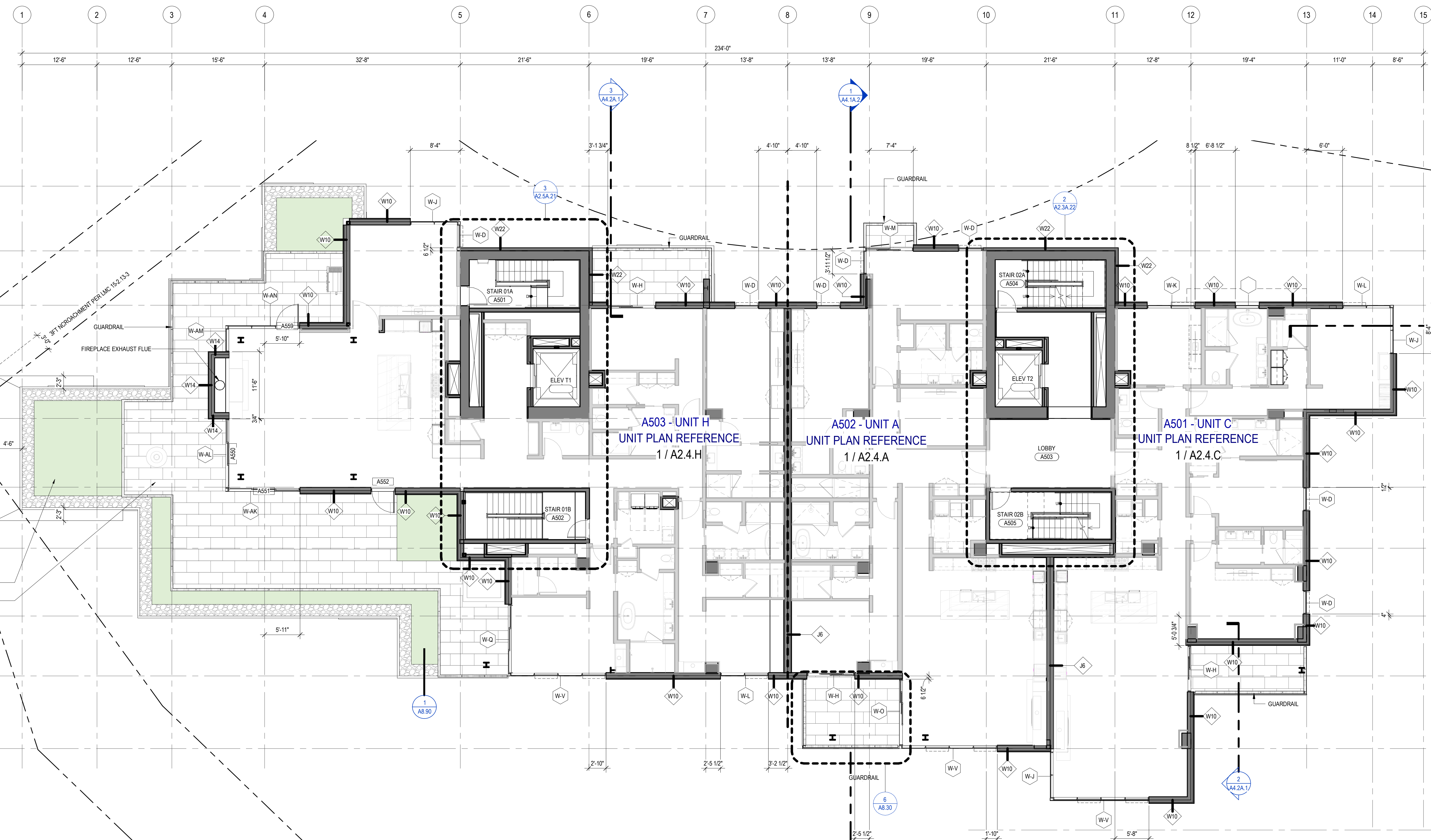
IFC SET 2 OF 3  
05/17/2024

PLAN - TOWER A - LVL 5

A2.2A.15



0 2' 4' 6' 8' 16' 24'



1 TOWER A - LEVEL 5  
SCALE: 1/8" = 1'-0"