

PLAN GENERAL NOTES

1. DIMENSIONS ARE TO FACE OF STUD OF EXTERIOR WALLS, CORRIDOR WALLS & INTERIOR WALLS, UNO.
2. DIMENSIONS ARE TO CENTERLINE OF DEMISING WALLS, UNO.
3. ALL EXPOSED STRUCTURAL STEEL TO RECEIVE 1 HR INTUMESCENT PAINTING, UNO.
4. AT FRAMED EXTERIOR WALLS, FRAMING TO BE SET BACK 5/8" FROM FACE OF CONCRETE TO ALLOW FOR FLUSH ALIGNMENT OF SHEATHING TO EDGE OF SLAB, UNO.
5. CASEWORK DIMENSIONS ARE TO FACE OF FINISH, UNO.
6. SEE SHEETS A0.10 AND A0.11 FOR ASSEMBLIES.
7. ALL CORRIDOR WALLS ARE TYPE B6, UNO.
8. ALL DEMISING WALLS ARE TYPE J6, UNO.
9. ALL INTERIOR PARTITIONS ARE TYPE A6, UNO.
10. ALL FURRING AROUND CONCRETE STRUCTURAL COLUMNS TYPE G1, UNO.
11. ALL VENT SHAFT WALLS ARE TYPE K4, UNO.
12. REFER TO LIFE SAFETY PLANS A0.30 - A0.34 FOR FULL EXTENT OF FIRE RATED WALLS.
13. UNIT PLAN LAYOUTS ON SHEETS A2.4A - A2.4R.
14. ALL OWNER PARKING STALLS SHALL INCLUDE EV INFRASTRUCTURE.
15. REFER TO SHEET A0.08 FOR ANSI TYPE B ACCESSIBILITY REQUIREMENTS.
16. REFER TO SHEET A0.07 FOR ANSI TYPE A ACCESSIBILITY REQUIREMENTS.
17. REFER TO SHEET A0.06 FOR ADA PUBLIC SPACE ACCESSIBILITY REQUIREMENTS.
18. ALL MECHANICAL EQUIPMENT LOCATED WITHIN ELEVATOR/MECHANICAL EQUIPMENT ENCLOSURE.



100 South Jackson St. Suite 600
Seattle, Washington 98101 USA
+1 206 824 6270 tkundig@olsonkundig.com

Olson Kundig

SOMMET BLANC
5500 MARSCA AVE
PARK CITY, UT 84060



Aspen Group USA, LLC
PO Box 980022
Park City, Utah 84098

Pool Consultant
Cloward H2O
2006 N University Ave, Suite 290
Provo, UT 84604

Landscape Architect
EPG Design
6949 South High Tech Drive, Suite 100
Midvale, Utah 84047

Specifications Writer
Friday Group
88 Marrett Road
Medfordbury, VT

Code Consultant
Holmes
800 1st Avenue, Suite 200A
Seattle, WA 98104

Fire Protection Engineer
Jensen Hughes
One Research Drive, Suite 305C
Westborough, MA 01581

Vertical Transportation Consultant
Lerch Bates
19515 North Creek Parkway, Suite 304
Bellevue, WA 98011

Structural Engineer
Magnuson Hemmick Associates
1301 6th Ave, Suite 3200
Seattle, WA 98101

Lighting Designer
Q
1319 SE MLK Blvd, Suite 210
Portland, Oregon 97219

Building Envelope Consultant
RDH
2101 N 34th St
Seattle, WA 98103

Accessibility Consultant
Studio Pacifica
2144 Westlake Ave N, Suite F
Seattle, WA 98109

MEP Engineer
WSP USA
1501 Fourth Ave., Suite 3100
Seattle, WA 98154

principal architect... TK, KM
project manager... TM, JB, SL, MD
drawn by... SK, SS, JR, CP, EA
"JT", BD

checked by... JB
job no. 2052
date 05/17/2024

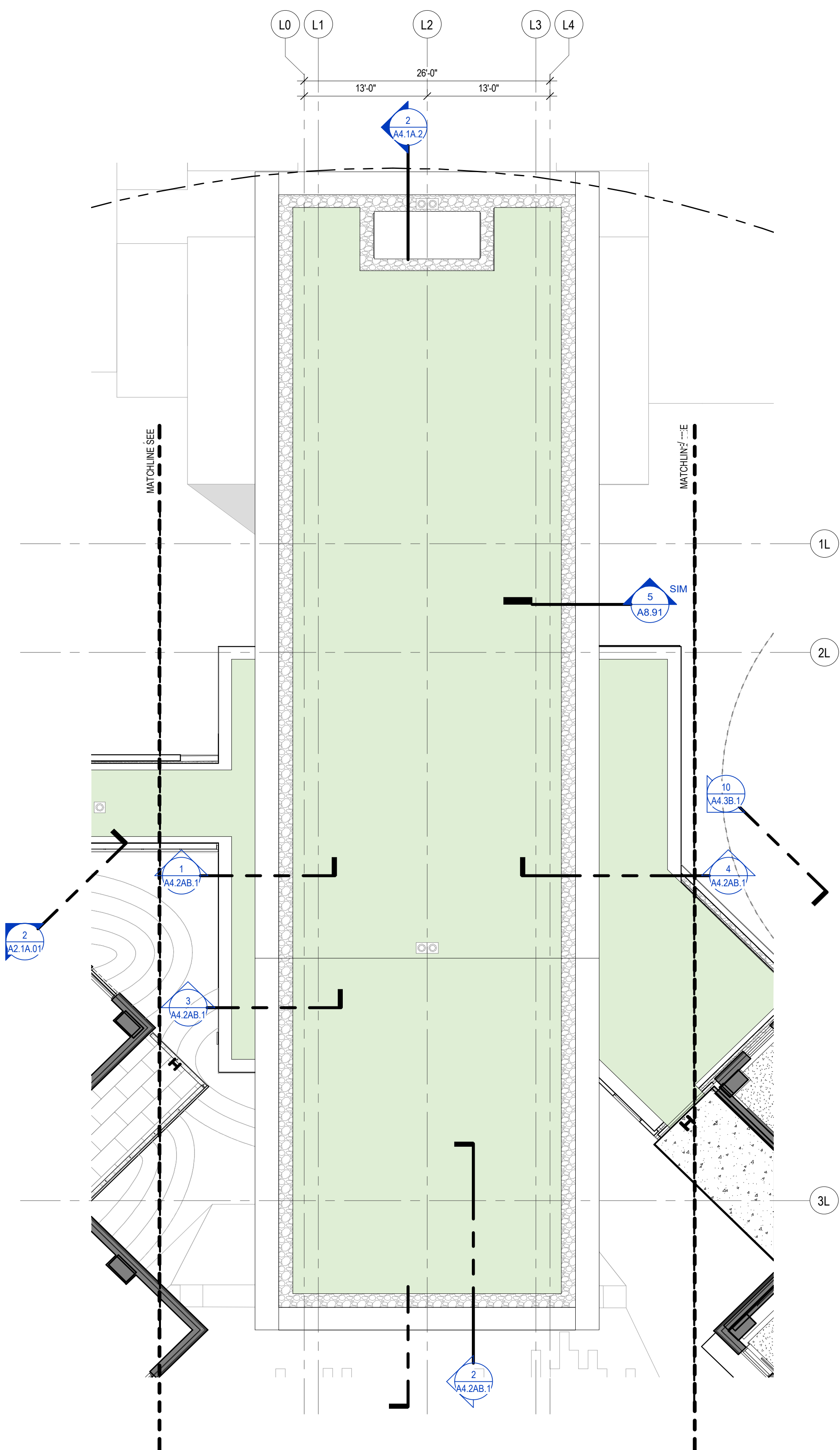
revisions:

no. date by

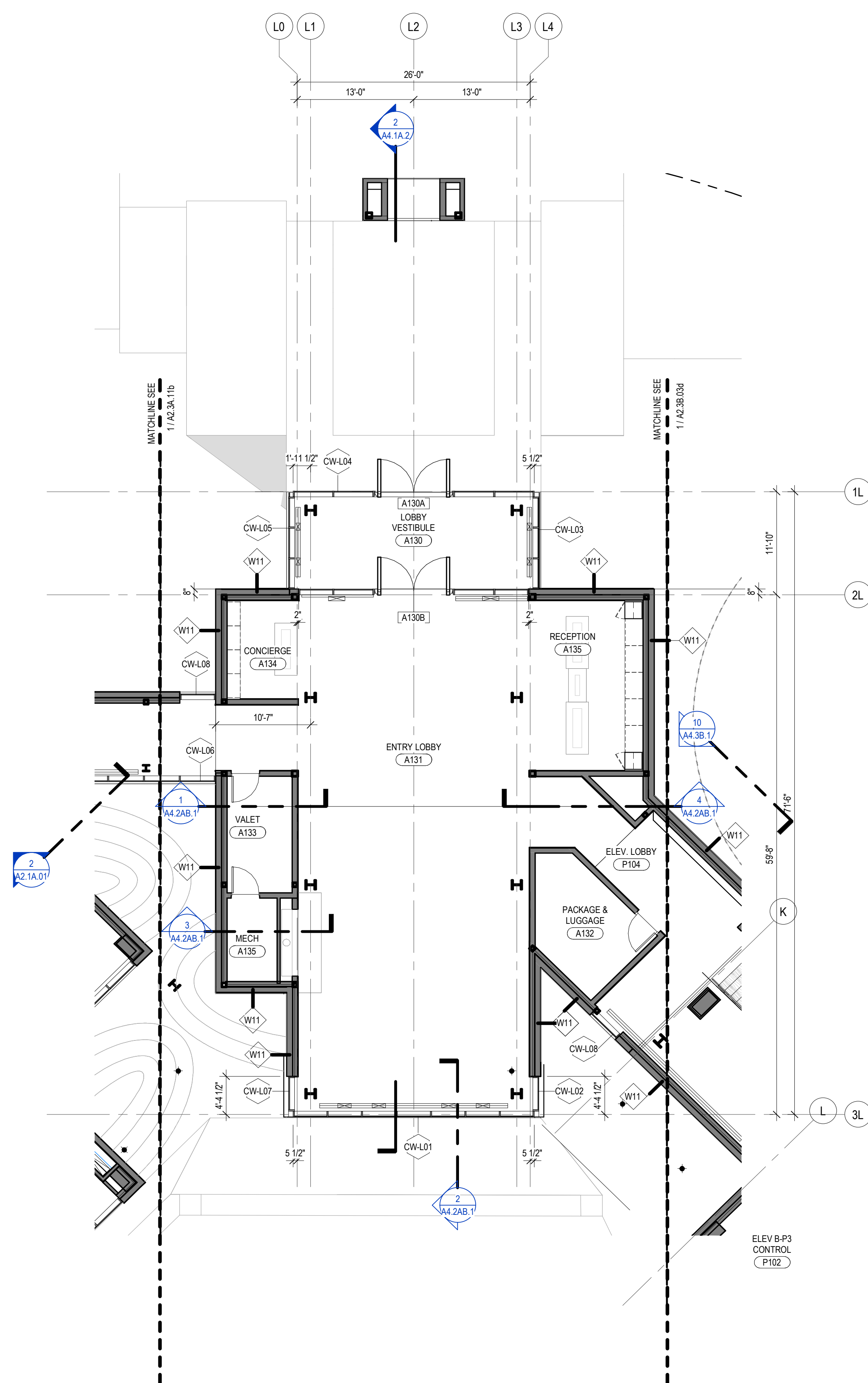
IFC SET 2 OF 3
05/17/2024

PLAN - LOBBY

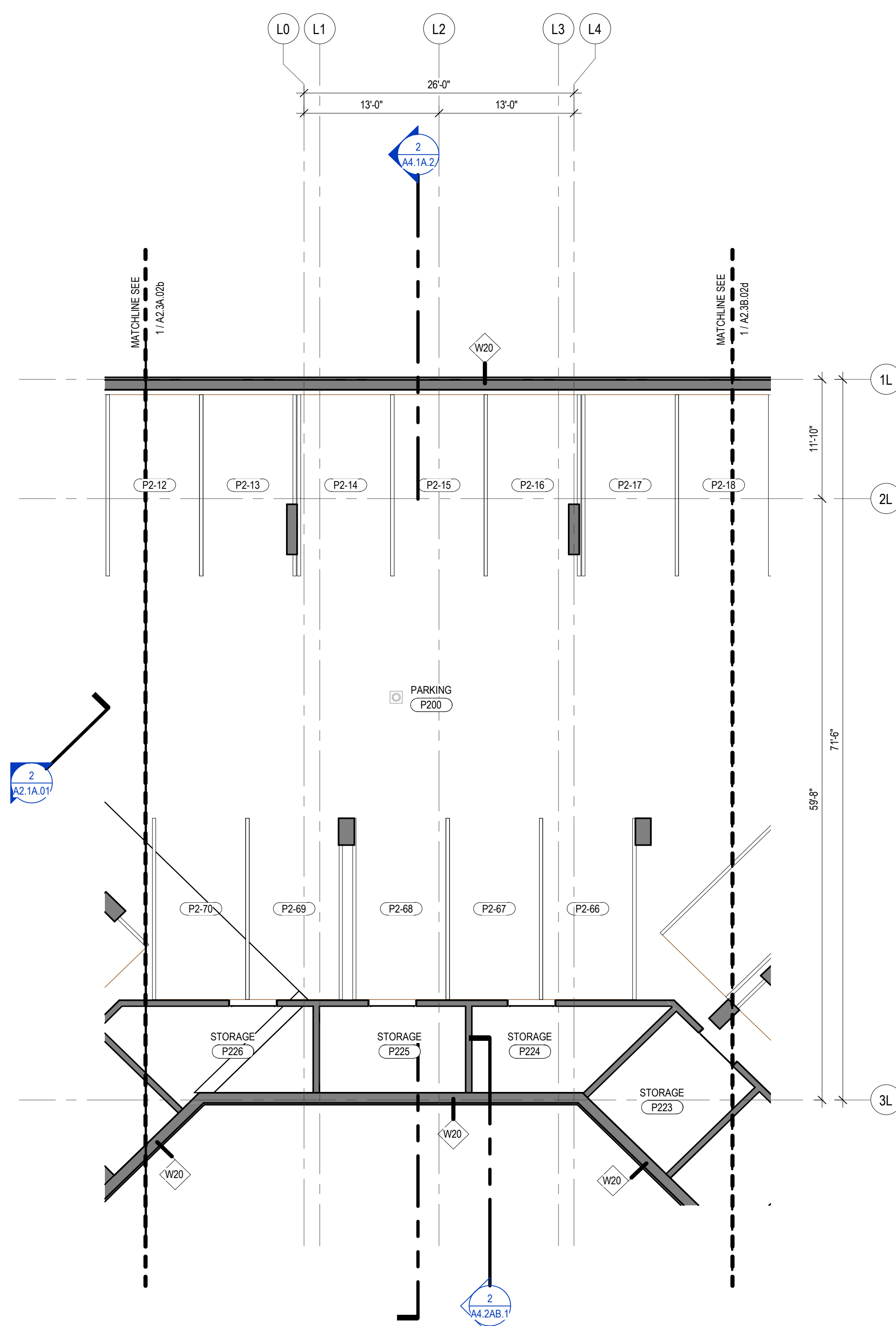
A2.2AB.11



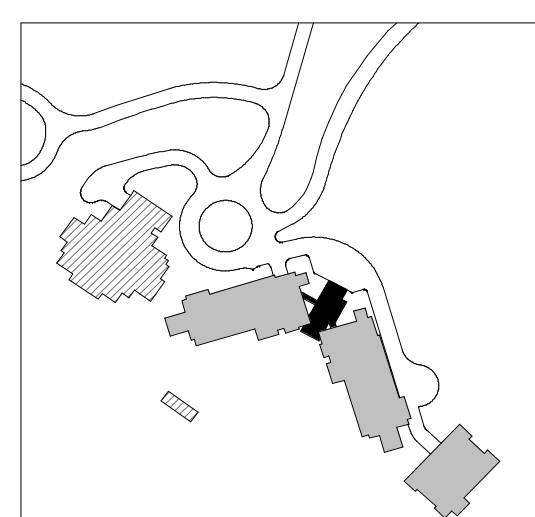
3 LOBBY - ROOF
SCALE: 1/8" = 1'-0"



2 LOBBY - LEVEL 1
SCALE: 1/8" = 1'-0"



1 LOBBY - LEVEL P2
SCALE: 1/8" = 1'-0"



0 2' 4' 6' 8' 16' 24'