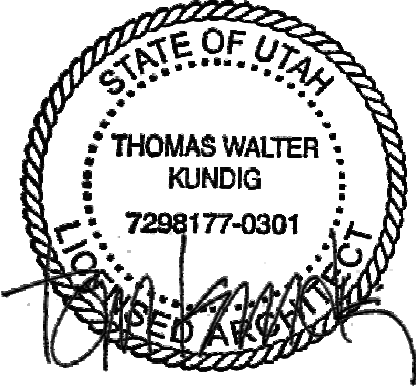


PLAN GENERAL NOTES

1. DIMENSIONS ARE TO FACE OF STUD OF EXTERIOR WALLS, CORRIDOR WALLS & INTERIOR WALLS, UNO.
2. DIMENSIONS ARE TO CENTERLINE OF DEMISING WALLS, UNO.
3. ALL EXPOSED STRUCTURAL STEEL TO RECEIVE 1 HR INTUMESCENT PAINTING, UNO.
4. AT FRAMED EXTERIOR WALLS, FRAMING TO BE SET BACK 8" FROM FACE OF CONCRETE TO ALLOW FOR FLUSH ALIGNMENT OF SHEATHING TO EDGE OF SLAB, UNO.
5. CASEWORK DIMENSIONS ARE TO FACE OF FINISH, UNO.
6. SEE SHEETS A2.10 AND A2.11 FOR ASSEMBLIES.
7. ALL CORRIDOR WALLS ARE TYPE EE, UNO.
8. ALL DEMISING WALLS ARE TYPE AE, UNO.
9. ALL INTERIOR PARTITIONS ARE TYPE AE, UNO.
10. ALL FURNING AROUND CONCRETE STRUCTURAL COLUMNS TYPE G1, UNO.
11. ALL VENT SHAFT WALLS ARE TYPE AE, UNO.
12. REFER TO LIFE SAFETY PLANS A2.20 - A2.24 FOR FULL EXTENT OF FIRE RATED WALLS.
13. UNIT PLAN LAYOUTS ON SHEETS A2.4A - A2.4B.
14. ALL OWNER PARKING STALLS SHALL INCLUDE EV INFRASTRUCTURE.
15. REFER TO SHEET A2.08 FOR ADA TYPE B ACCESSIBILITY REQUIREMENTS.
16. REFER TO SHEET A2.07 FOR ADA TYPE A ACCESSIBILITY REQUIREMENTS.
17. REFER TO SHEET A2.06 FOR ADA PUBLIC SPACE ACCESSIBILITY REQUIREMENTS.
18. ALL MECHANICAL EQUIPMENT LOCATED WITHIN ELEVATOR MECHANICAL EQUIPMENT ENCLOSURE.



100 South Jackson St., Suite 600  
Seattle, Washington 98104 USA  
+1 206 834 6570 olsonkundig.com

Olson Kundig

SOMMET BLANC  
5500 MARSCA AVE  
PARK CITY, UT 84300



Aspen Group USA, LLC  
P.O. Box 980022  
Park City, Utah 84098

Pool Consultant  
Cloward H2O  
2006 N University Ave., Suite 290  
Provo, UT 84604

Landscape Architect  
EPG Design  
6940 South High Tech Drive, Suite 100  
Midvale, Utah 84047

Specifications Writer  
Friday Group  
88 Main Road  
Middlebury, VT

Code Consultant  
Holmes  
800 1st Avenue, Suite 200A  
Seattle, WA 98104

Fire Protection Engineer  
Jensen Hughes  
One Research Drive, Suite 305C  
Westborough, MA 01581

Vertical Transportation Consultant  
Lerch Bates  
19515 North Creek Parkway, Suite 304  
Bellevue, WA 98011

Structural Engineer  
Magnusson Karmachio Associates  
1301 6th Ave., Suite 3200  
Seattle, WA 98101

Lighting Designer  
O  
1319 SE MLK Blvd., Suite 210  
Portland, Oregon 97219

Building Envelope Consultant  
RDH  
2101 N 34th St  
Seattle, WA 98103

Accessibility Consultant  
Studio Pacifica  
2144 Westlake Ave N, Suite F  
Seattle, WA 98109

MEP Engineer  
WSP USA  
1501 Fourth Ave., Suite 3100  
Seattle, WA 98154

principal architect... TK, KM  
project manager... TM, JB, SL, MD  
drawn by... SK, SS, JR, CP, EA  
"JT", BD

checked by... JB  
job no. 20562  
date 05/17/2024

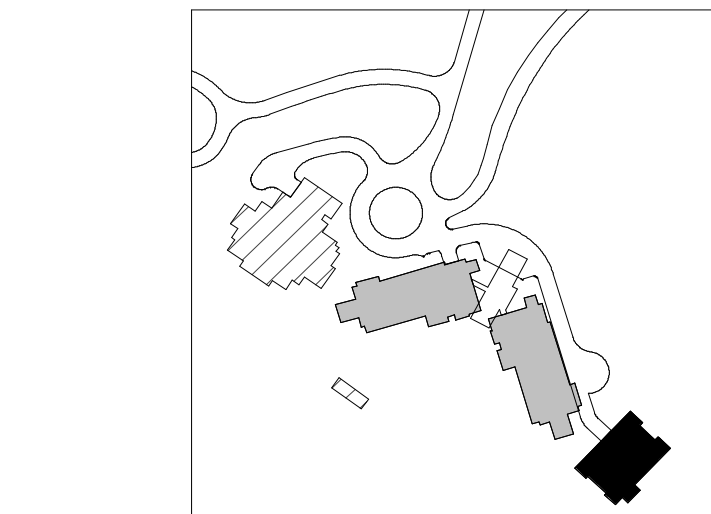
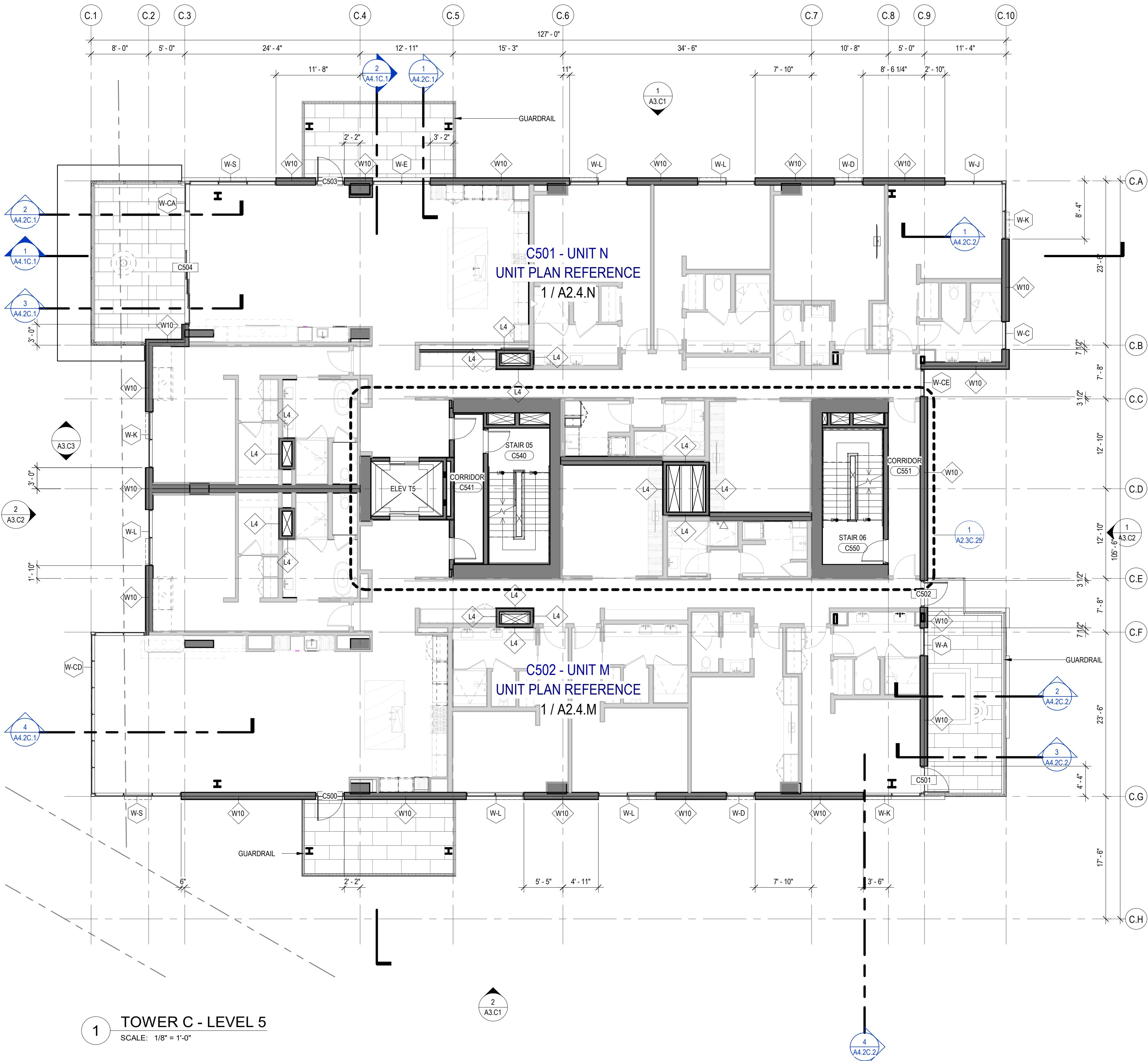
revisions:


no. date by

IFC SET 2 OF 3  
05/17/2024

PLAN - TOWER C - LVL 5

A2.2C.15



0 2' 4' 6' 8' 16' 24'