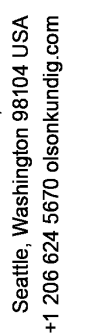


1. DIMENSIONS ARE TO FACE OF STUD OF EXTERIOR WALLS, CORRIDOR WALLS & INTERIOR WALLS.
2. DIMENSIONS ARE TO CENTERLINE OF REMOVING WALLS, UNLESS SPECIFIED OTHERWISE.
3. ALL EXPOSED STRUCTURAL STEEL TO RECEIVE 1/4" HIRTHAMOUNT PAINTING, UNLESS OTHERWISE SPECIFIED.
4. ALL EXPOSED STEEL JOINTS, FRAMING JOINTS, AND ALL OTHER STEEL JOINTS TO BE SET BACK 3/8" FROM FACE OF CONCRETE TO ALLOW FOR FLUSH ALIGNMENT OF SHEATHING TO EDGE OF SLAB. UNLESS OTHERWISE SPECIFIED.
5. CASEWORK TO BE 1/2" THICK UNLESS OTHERWISE SPECIFIED.
6. SEE SHEETS 40 TO 410 FOR ALL ASSEMBLIES.
7. ALL CORRIDOR WALLS ARE TYPE 66, UNLESS OTHERWISE SPECIFIED.
8. ALL REMOVING WALLS ARE TYPE 48, UNLESS OTHERWISE SPECIFIED.
9. ALL INTERIOR PARTITIONS ARE TYPE 46, UNLESS OTHERWISE SPECIFIED.
10. ALL PARTITIONS AROUND STAIRS AND ELEVATOR COLUMNS ARE TYPE 01, UNLESS OTHERWISE SPECIFIED.
11. ALL VENT SHAFT WALLS ARE TYPE 44, UNLESS OTHERWISE SPECIFIED.
12. REFER TO LIFE SAFETY 40.30 TO 40.34 FOR FULL EXPLANATION OF FIRE RATED WALLS.
13. UNLESS OTHERWISE SPECIFIED, ALL WALLS ARE TO BE 12" THICK UNLESS OTHERWISE SPECIFIED.
14. ALL OWNER PARTITION STALLS SHALL INCLUDE INFRASTRUCTURE.
15. REFER TO SHEET 40.10 FOR ALL ACCESSIBILITY REQUIREMENTS.
16. REFER TO SHEET 40.10 FOR ALL ANSI A117.1 ACCESSIBILITY REQUIREMENTS.
17. REFER TO SHEET 40.04 FOR ADA PUBLIC SPACE ACCESSIBILITY REQUIREMENTS.
18. ALL MECHANICAL EQUIPMENT LOCATED WITHIN RELEVANT MECHANICAL EQUIPMENT ENCLOSURE.



9300 MARSAC AVE  
PARK CITY, UT 84060



EP Engineer  
EP USA  
01 Fourth Ave., Suite 3100  
Seattle, WA 98154

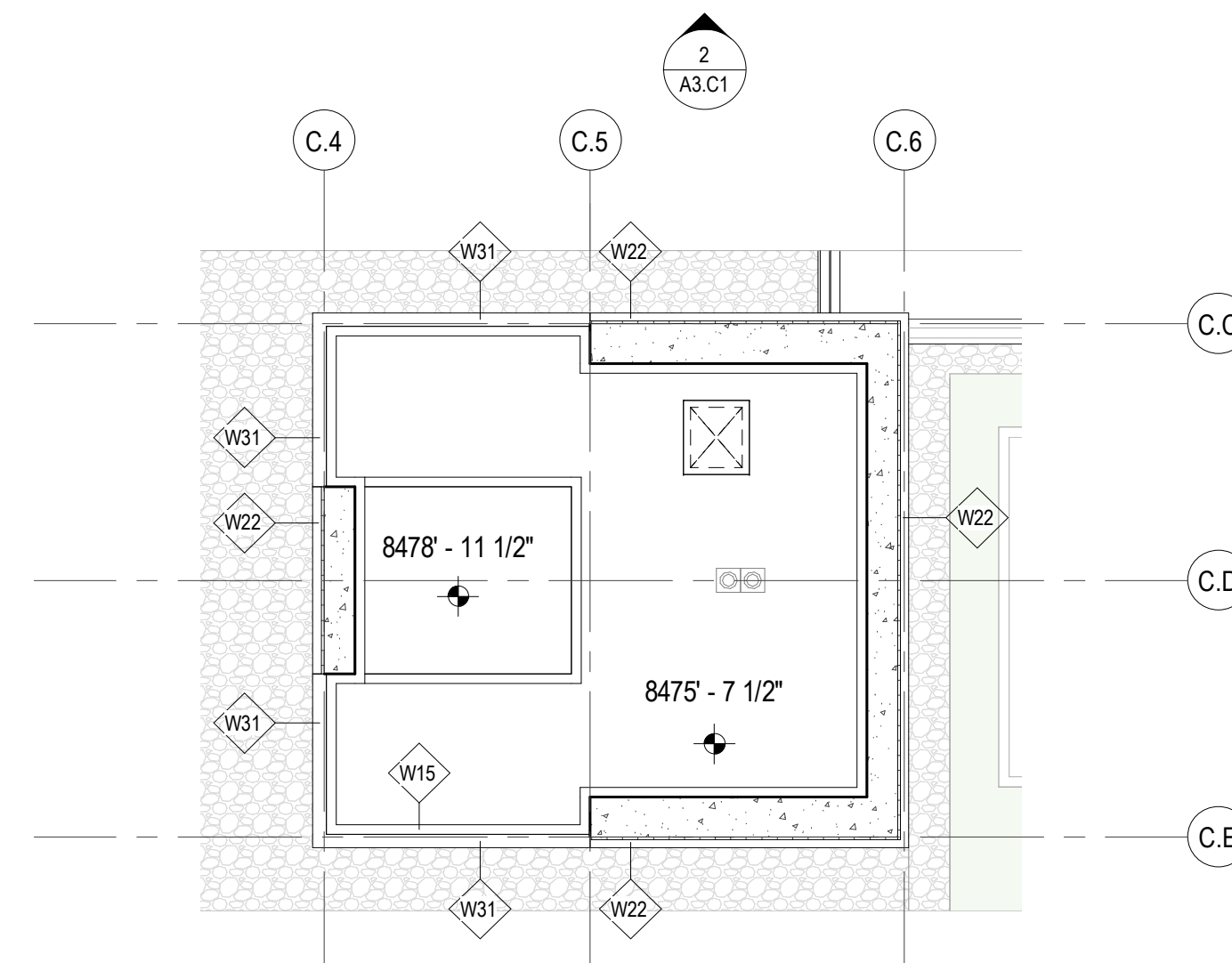
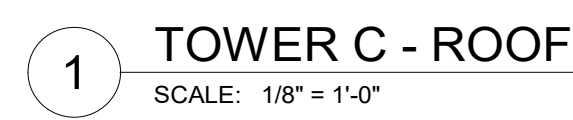
regions:

4/26/24	PLANNING PLAN REVIEW RESPONSE #1
date	by

date by

IFC SET 2 OF 3  
05/17/2024

N - TOWER C - ROOF  
A2.2C.R



2 TOWER C - ROOF - MECHANICAL PLENUM - UPPER  
SCALE: 1/8" = 1'-0"

