

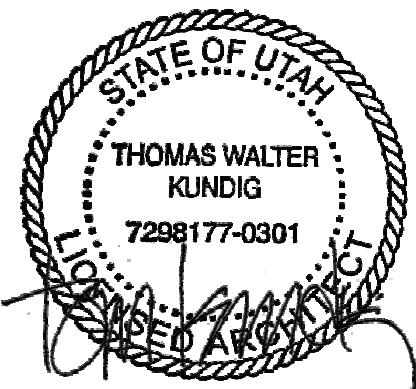
KEYNOTES

SECTION	DESCRIPTION
03 30 00-2 NOTE	ARCHITECTURALLY EXPOSED BOARD FORM CONCRETE
07 62 00-2 NOTE	METAL FASCIA - DARK
08 44 13	ALUMINUM CURTAIN WALL SYSTEM, RE: SCHEDULE
10 32 00-1	FIREPLACE
10 32 00-4	GAS APPLIANCE EXHAUST LOUVER

MATERIAL LEGEND

- ARCHITECTURAL BOARD FORMED CONCRETE
- GFRG PANEL
- SHEET METAL SIDING PLATE ALUMINUM
- ALUMINUM WINDOW SYSTEM
W-XX - SEE A0.7X SERIES
- GUARDRAIL 1

NOTE: REFER TO SPECIFICATION DOCUMENTS FOR INFORMATION REGARDING EACH FINISH MATERIAL



100 South Jackson St. Suite 600
Seattle, Washington 98101 USA
+1 206 834 5870 olsonkundig.com

Olson Kundig

SOMMET BLANC
5500 PARSAC AVE
PARK CITY, UT 84303



Aspen Group USA, LLC
PO Box 980022
Park City, Utah 84098

Pool Consultant
Cloward H2O
2096 N University Ave, Suite 290
Provo, UT 84604

Landscape Architect
EPG Design
6949 South High Tech Drive, Suite 100
Midvale, Utah 84047

Specifications Writer
Friday Group
88 Mainelli Road
Middlebury, VT

Code Consultant
Holmes
800 1st Avenue, Suite 200A
Seattle, WA 98104

Fire Protection Engineer
Jensen Hughes
One Research Drive, Suite 305C
Westborough, MA 01581

Vertical Transportation Consultant
Lerch Bates
19515 North Creek Parkway, Suite 304
Seattle, WA 98011

Structural Engineer
Magnusson Karmachius Associates
1301 6th Ave, Suite 3200
Seattle, WA 98101

Lighting Designer
Q
1319 SE MLK Blvd, Suite 210
Portland, Oregon 97219

Building Envelope Consultant
RDH
2101 N 34th St
Seattle, WA 98103

Accessibility Consultant
Studio Pacifica
2144 Westlake Ave N, Suite F
Seattle, WA 98109

MEP Engineer
WSP USA
1501 Fourth Ave., Suite 3100
Seattle, WA 98154

principal architect... TK, KM
project manager... TM, JB, SL, MD
drawn by... SK, SS, JR, CP, EA
"JF", BD
checked by... JB
job no. 20562
date 05/17/2024

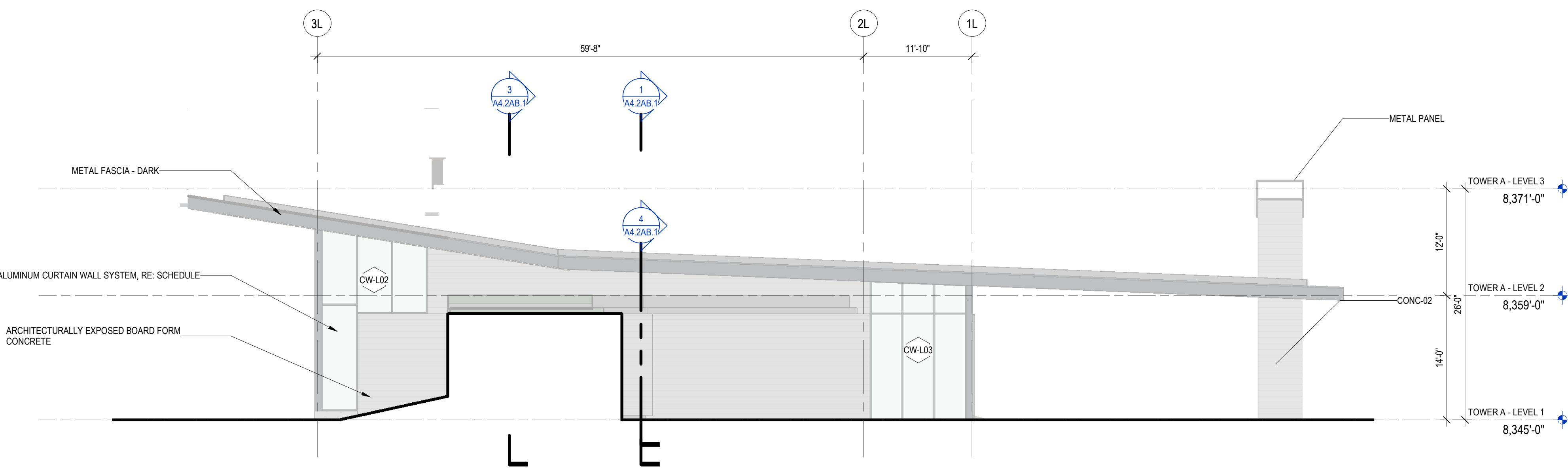
revisions:

no. date by

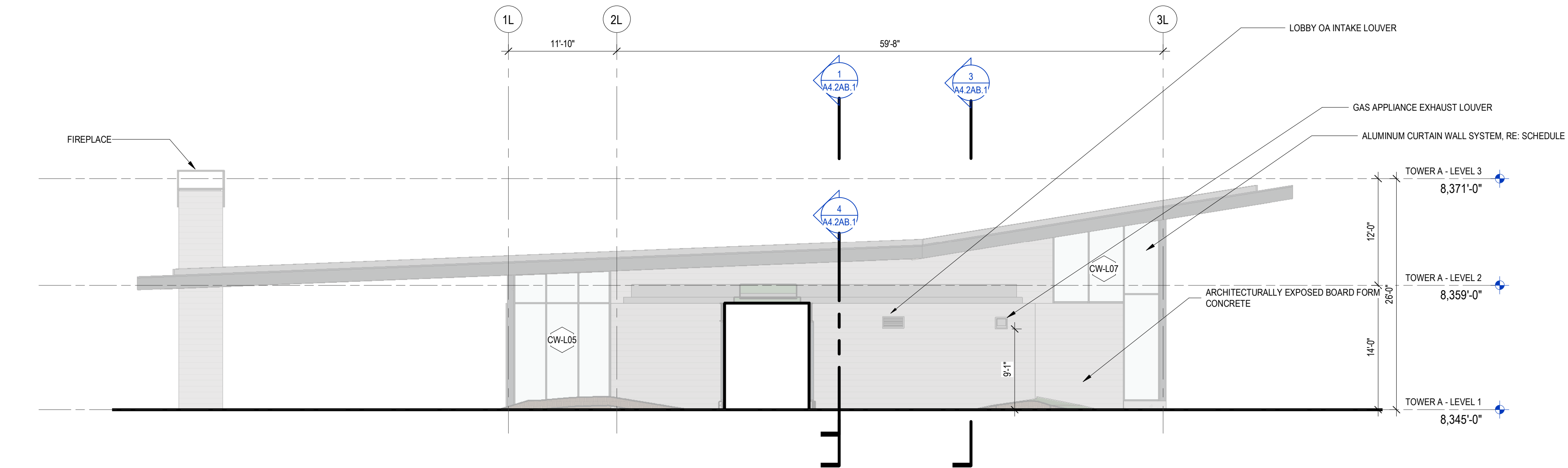
IFC SET 2 OF 3
05/17/2024

ELEVATION - TOWER AB
LOBBY

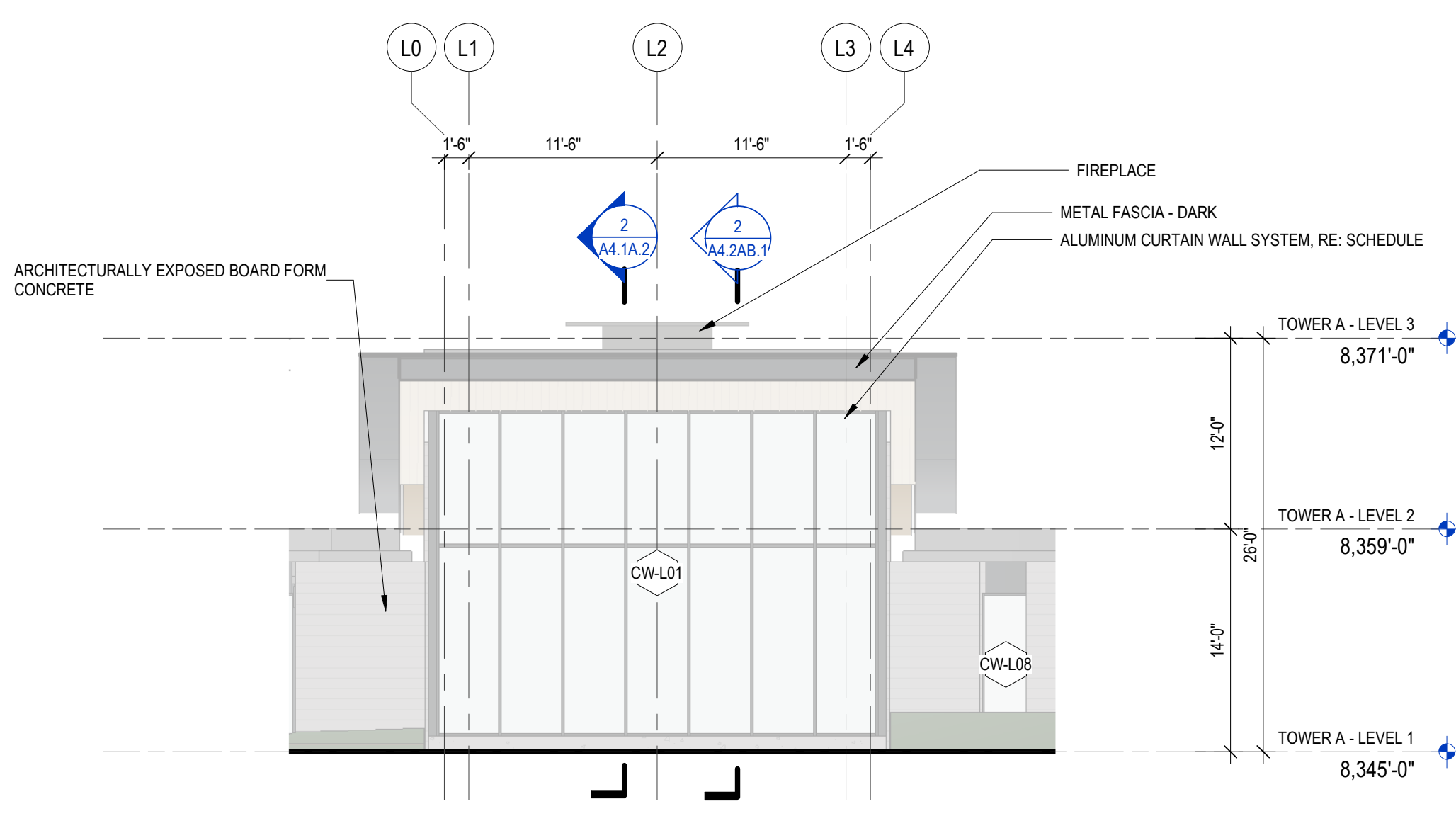
A3.AB1



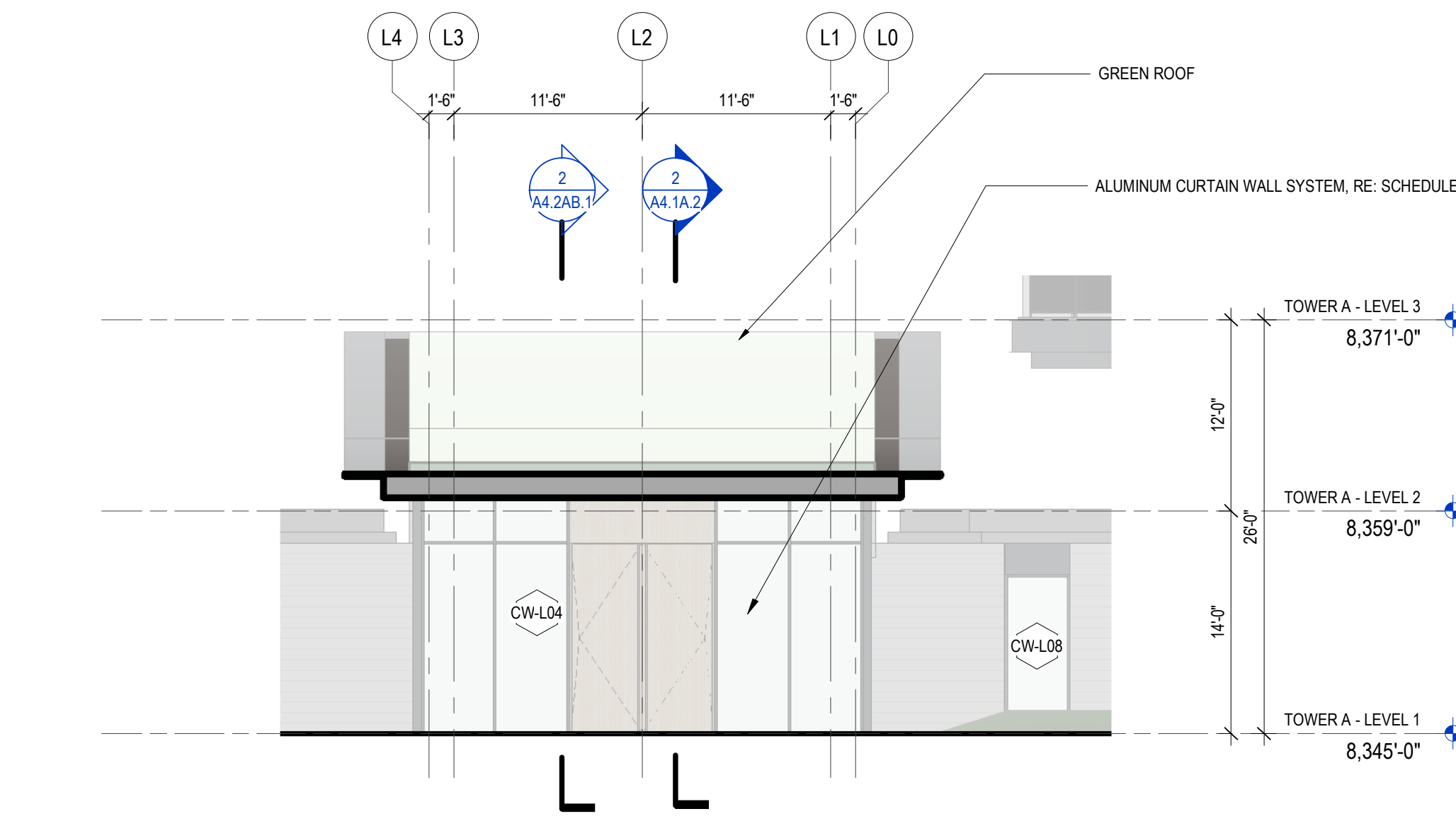
3 LOBBY - SOUTH EAST
SCALE: 1/8" = 1'-0"



2 LOBBY - NORTH WEST
SCALE: 1/8" = 1'-0"



4 LOBBY - SOUTH WEST
SCALE: 1/8" = 1'-0"



1 LOBBY - NORTH EAST
SCALE: 1/8" = 1'-0"

0 2' 4' 6' 8' 16' 24'