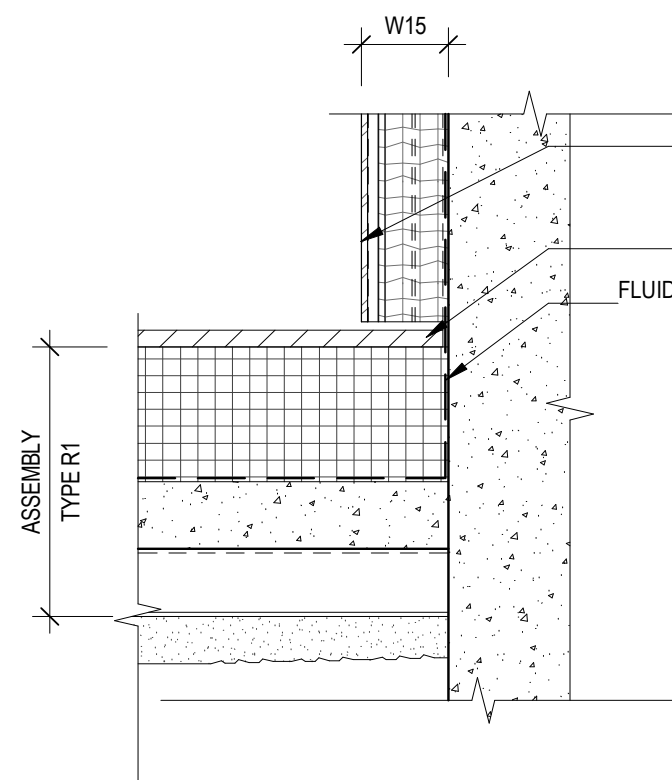
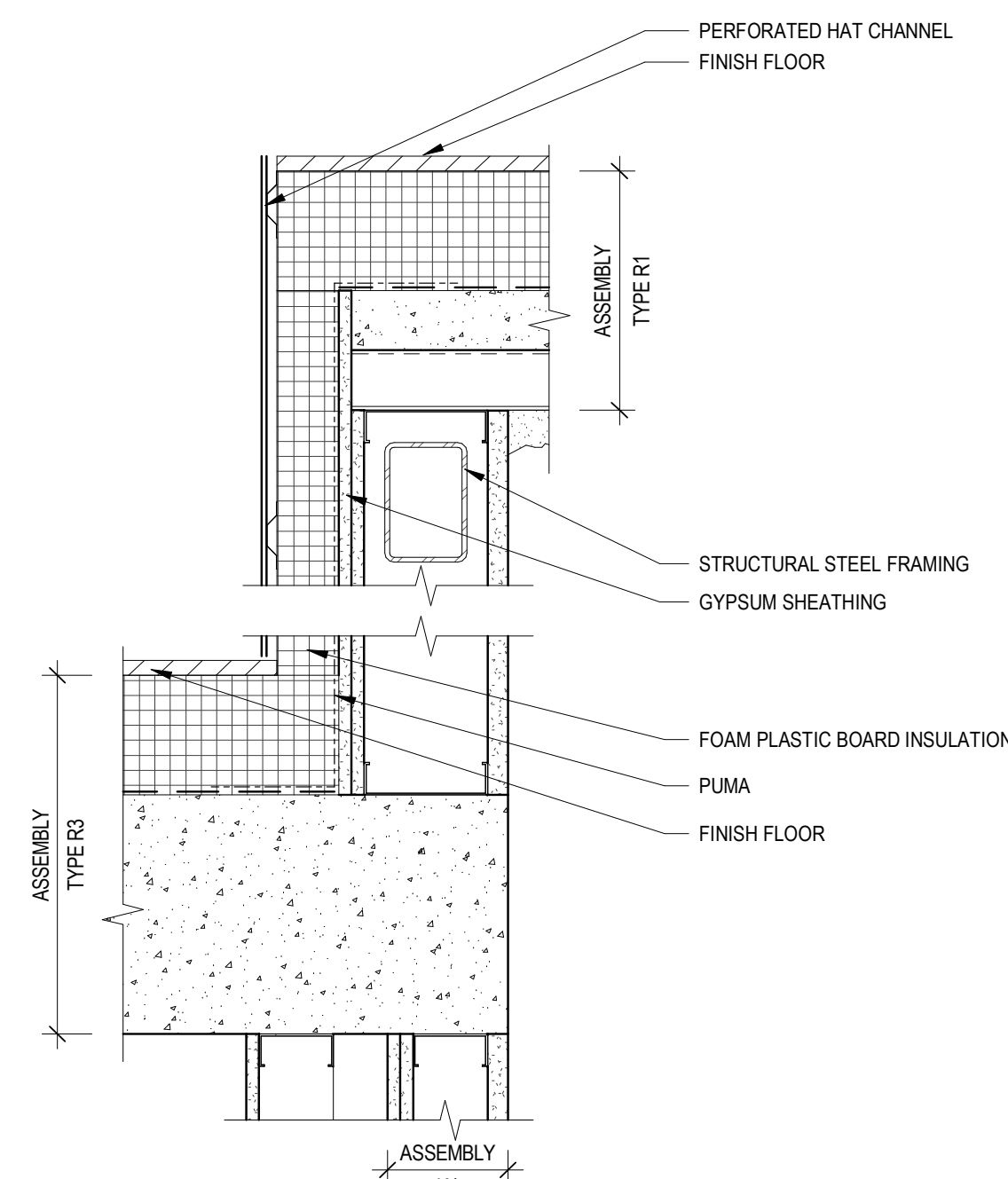


9 DETAIL SECTION - MEP PENTHOUSE PARAPET @ ELEVATOR II  
SCALE: 1 1/2" = 1'-0"



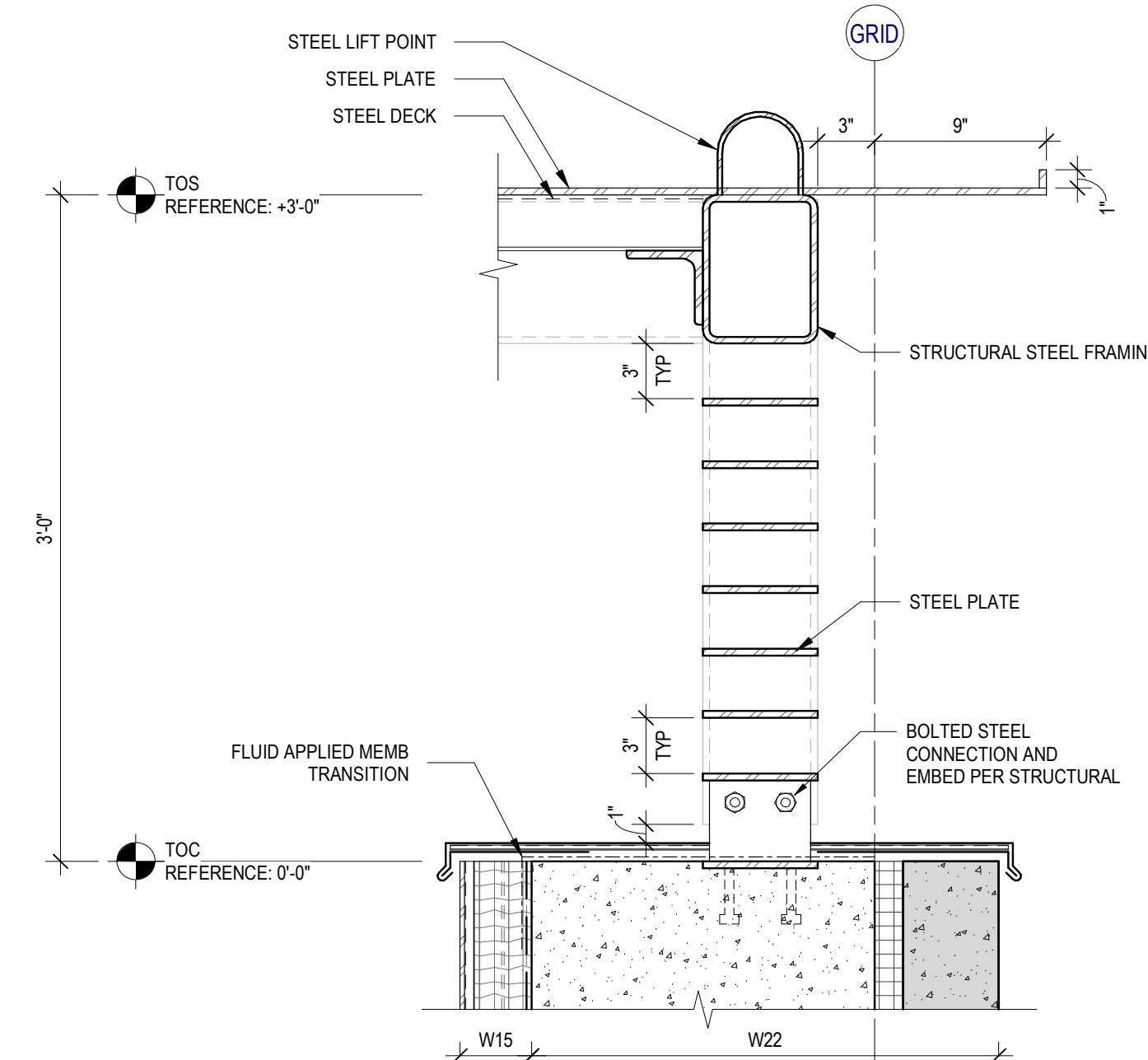
11 DETAIL SECTION - MEP PENTHOUSE PARAPET @ ELEVATOR III  
SCALE: 1 1/2" = 1'-0"



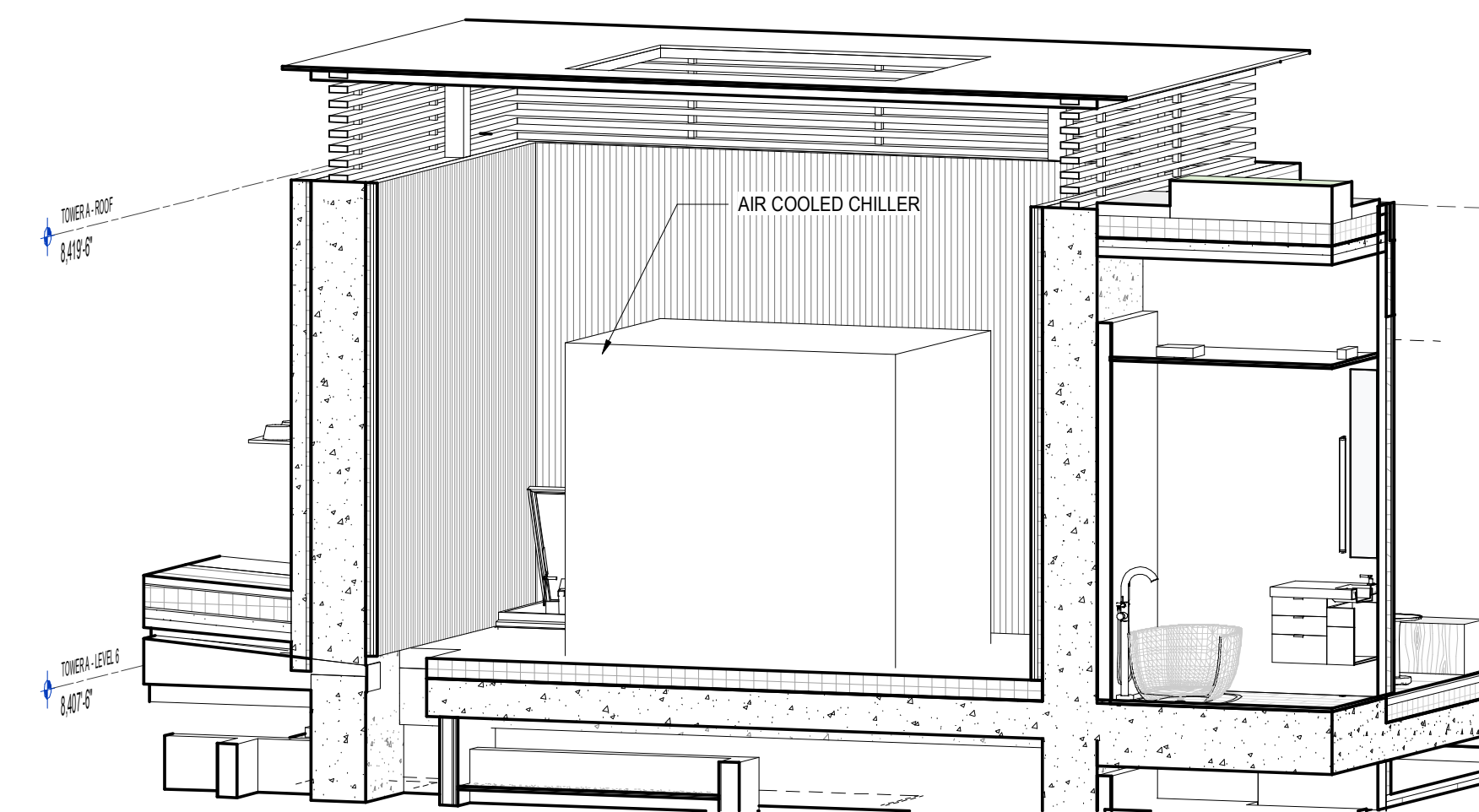
8 DETAIL SECTION - MEP PENTHOUSE PARAPET @ ELEVATOR  
SCALE: 1 1/2" = 1'-0"

## SECTION GENERAL NOTES

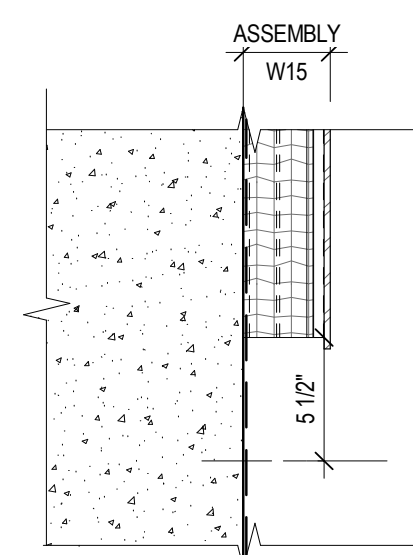
1. SEE SHEET A0.10 AND A0.11 FOR ASSEMBLIES.
2. ALL FLOORS ARE TYPE F10 UNO.
3. ALL CEILINGS ARE C11 UNO.
4. WALL SECTIONS ARE REFERENCED FROM THE A2.20 PLAN SERIES
5. REFER TO ROOF PLANS FOR SLOPE DESIGN INTENT



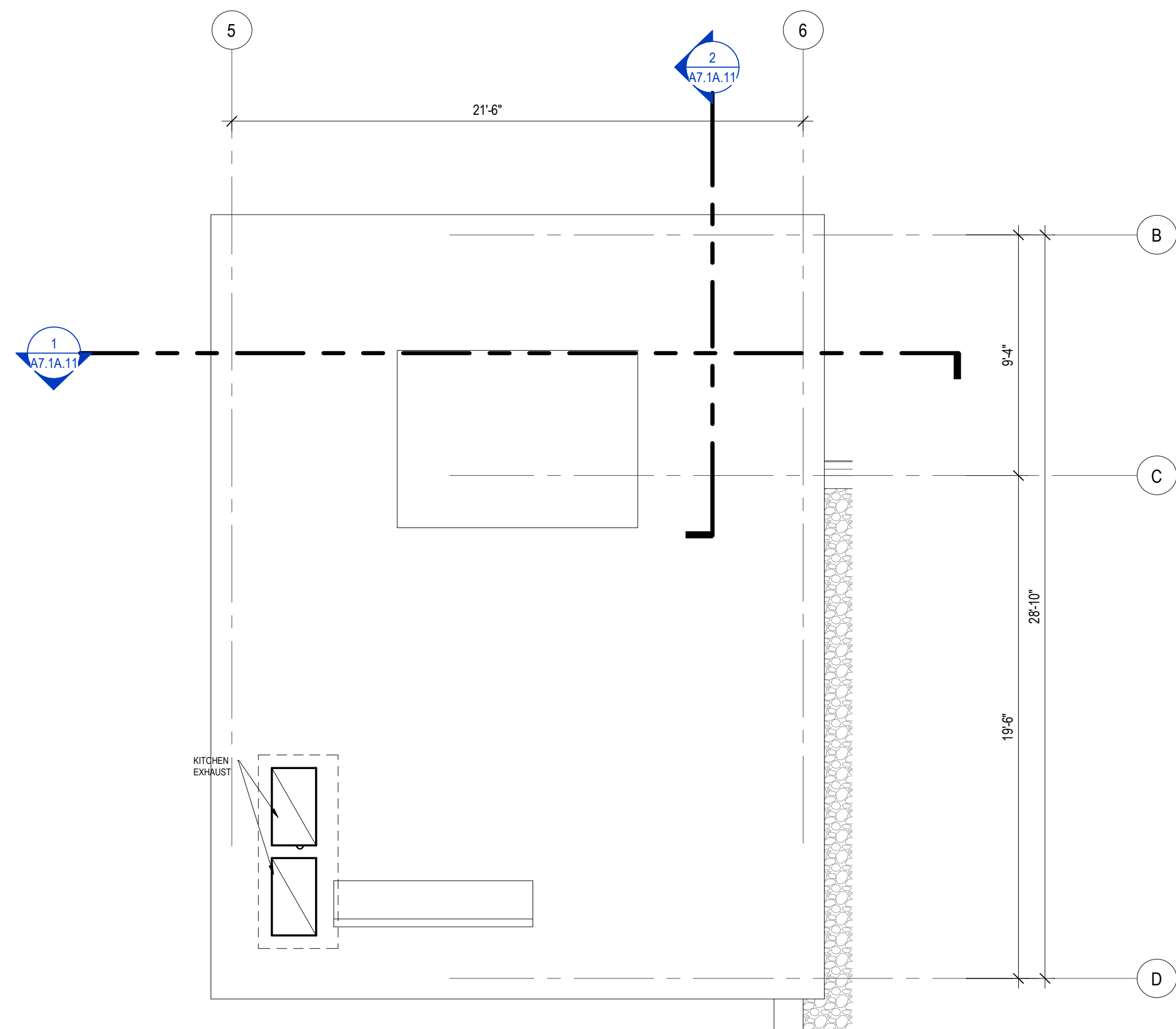
7 DETAIL SECTION - PARAPET @ MEP SCREEN  
SCALE: 1 1/2" = 1'-0"



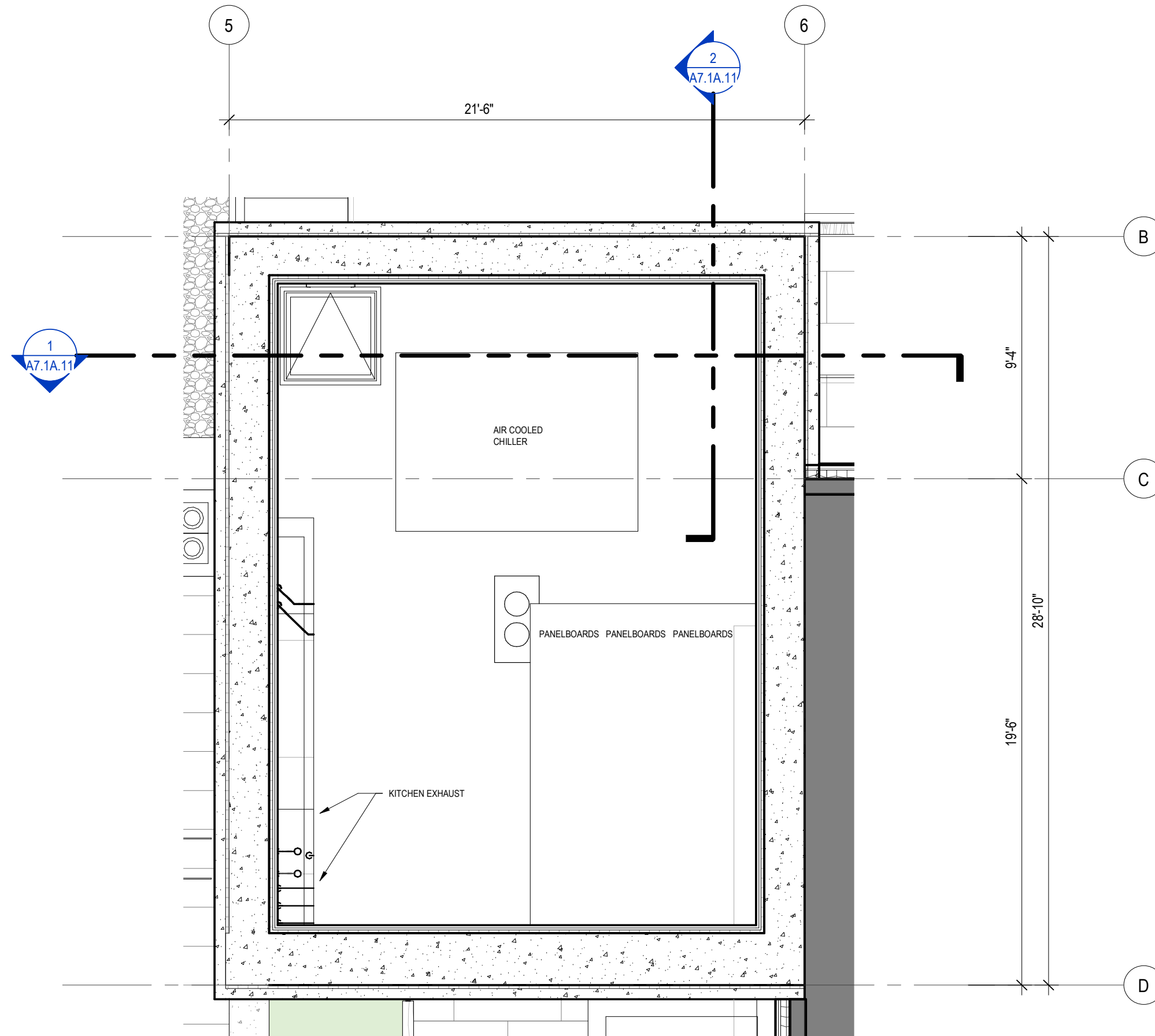
4 MEP PENTHOUSE AXO  
SCALE:



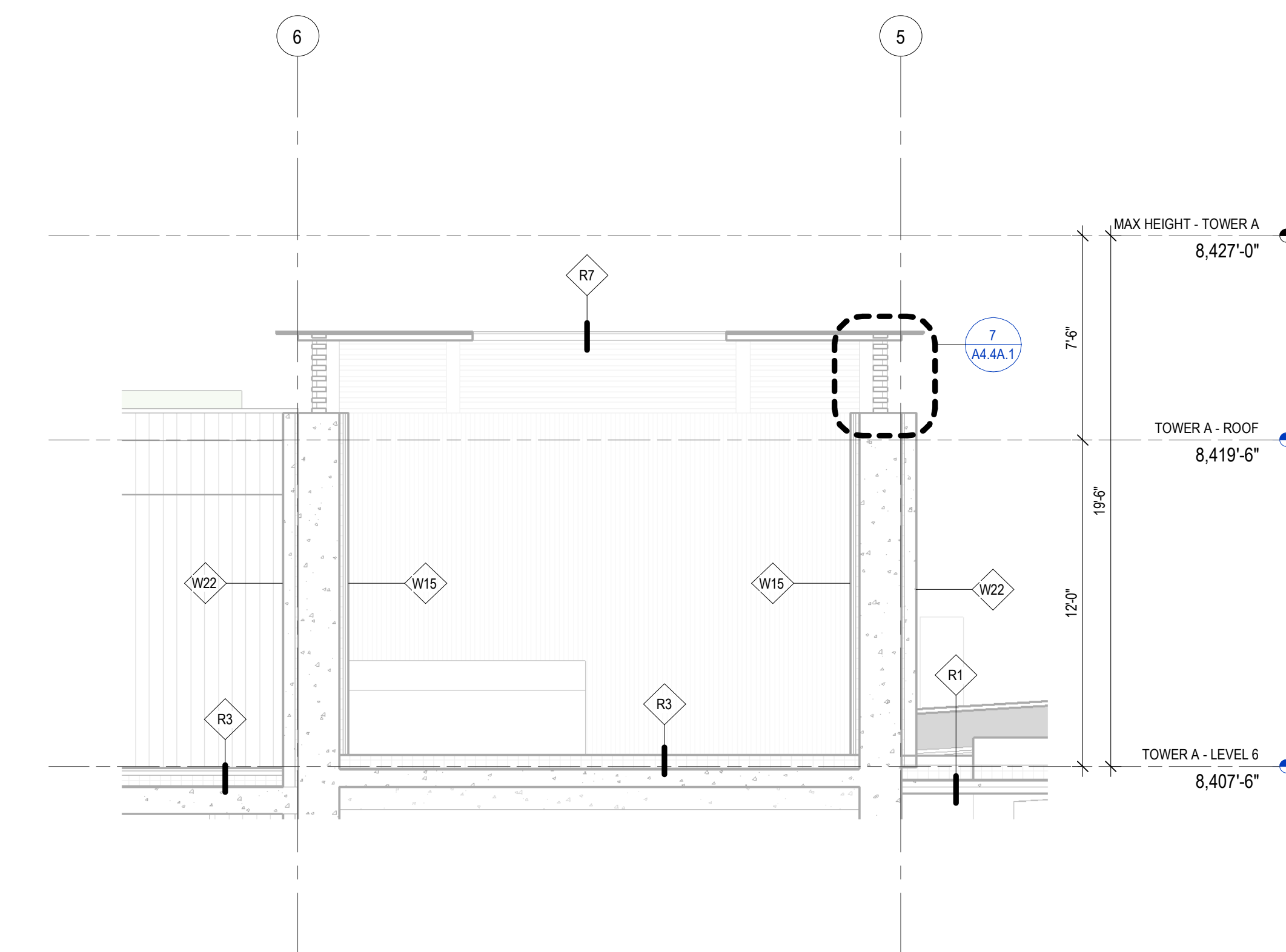
10 DETAIL SECTION - MEP PENTHOUSE SHAFT  
SCALE: 1 1/2" = 1'-0"



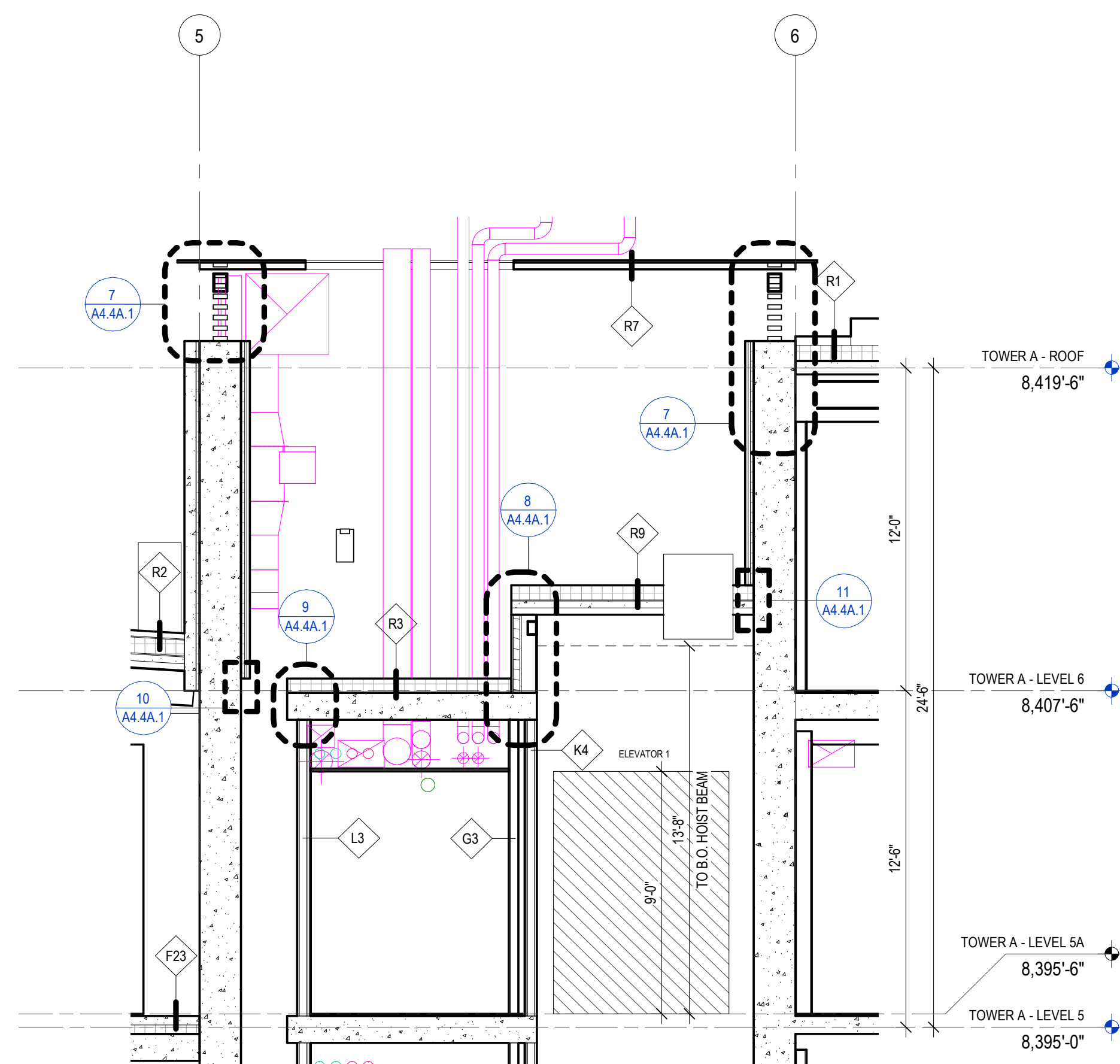
6 ENLARGED PLAN AT MEP PENTHOUSE - ROOF  
SCALE: 1/4" = 1'-0"



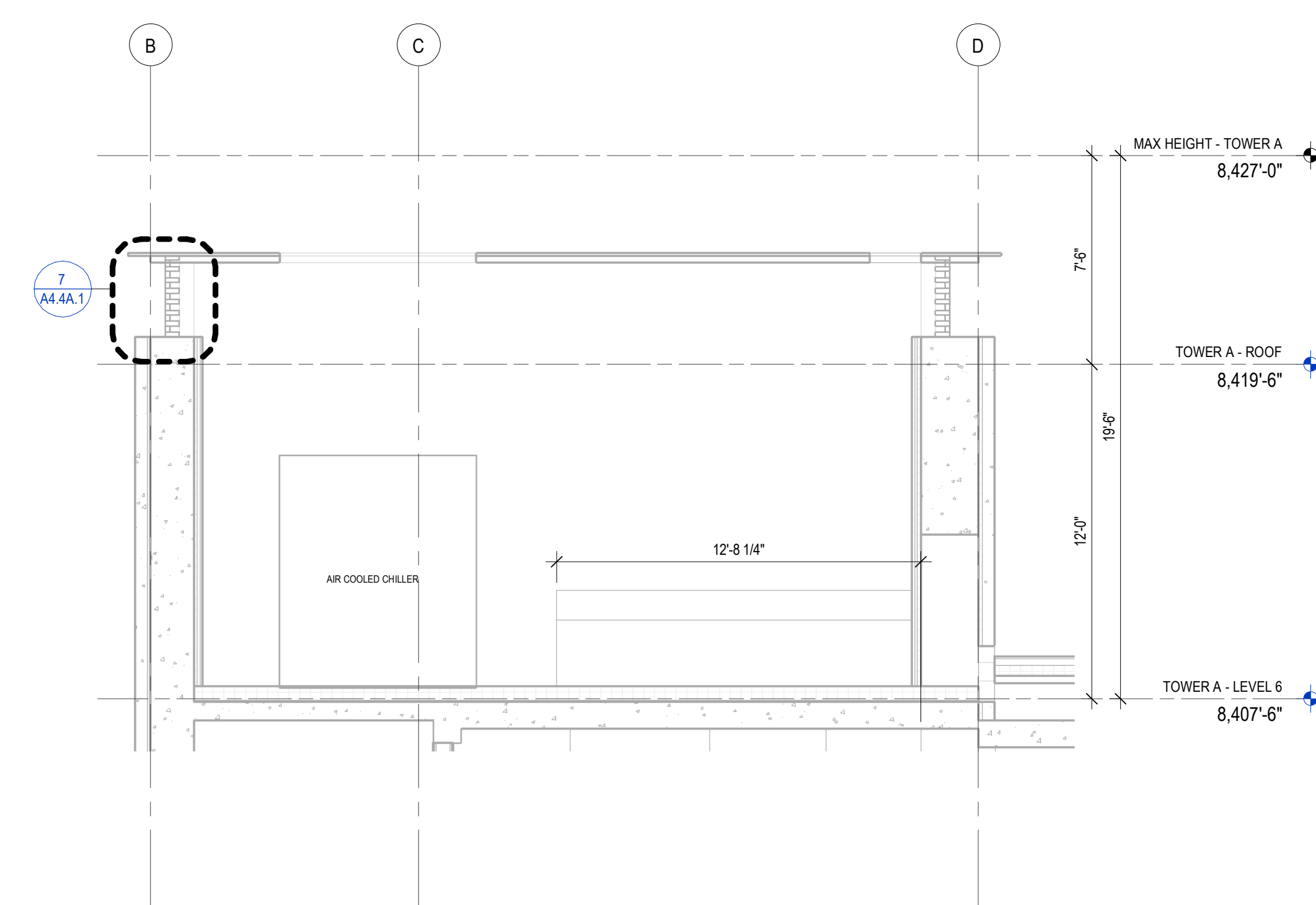
5 ENLARGED PLAN AT MEP PENTHOUSE LEVEL  
SCALE: 1/4" = 1'-0"



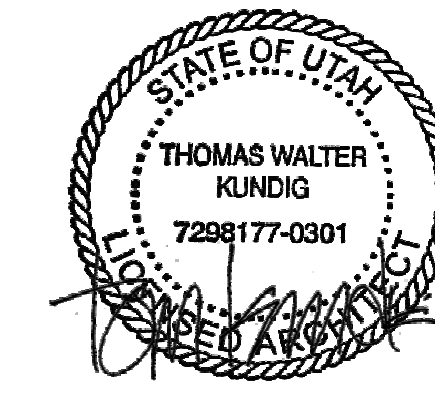
3 SECTION - BUILDING A - LONGITUDINAL  
SCALE: 1/4" = 1'-0"



2 SECTION - BUILDING A - LONGITUDINAL 2  
SCALE: 1/4" = 1'-0"



1 SECTION - BUILDING A - CROSS 1  
SCALE: 1/4" = 1'-0"



Olson Kundig

SOMMET BLANC  
5500 MARSA CAVE  
PARK CITY, UT 84060



Aspen Group USA, LLC  
PO Box 980022  
Park City, Utah 84098

Pool Consultant  
Cloward H2O  
2006 N University Ave, Suite 290  
Provo, UT 84604

Landscape Architect  
EPG Design  
6940 South High Tech Drive, Suite 100  
Midvale, Utah 84047

Specifications Writer  
Friday Group  
88 Marshall Road  
Madison, VT

Code Consultant  
Holmes  
800 1st Avenue, Suite 200A  
Seattle, WA 98104

Fire Protection Engineer  
Jensen Hughes  
One Research Drive, Suite 305C  
Westborough, MA 01581

Vertical Transportation Consultant  
Lerch Bates  
19515 North Creek Parkway, Suite 304  
Bellevue, WA 98011

Structural Engineer  
Magnuson Hancock Associates  
1301 6th Ave, Suite 3200  
Seattle, WA 98101

Lighting Designer  
Q  
1319 SE MLK Blvd, Suite 210  
Portland, Oregon 97219

Building Envelope Consultant  
RDH  
2101 N 34th St  
Seattle, WA 98103

Accessibility Consultant  
Studio Pacifica  
2144 Westlake Ave N, Suite F  
Seattle, WA 98109

MEP Engineer  
WSP USA  
1001 Fourth Ave., Suite 3100  
Seattle, WA 98154

principal architect... TK, KM  
project manager... TM, JR, SL, MD  
drawn by... SK, SS, JR, CP, EA  
checked by... JB  
job no. 2052  
date 05/17/2024

revisions:  
no. date by

IFC SET 2 OF 3  
05/17/2024

TOWER A - ENLARGED  
PLAN & SECTION AT  
ROOF

A4.4A.1