

159 South Jackson St, Suite 600
Seattle, Washington 98104 USA
+1 206 624 5670 disorkundig.com

Olson Kundig

SOMMET BLANC
93300 MARSAC AVE
PARK CITY, UT 84060



Aspen Group USA, LLC
PO Box 980022
Park City, Utah 84098

Pool Consultant
Cloward H20
2896 N University Ave, Suite 290
Provo, UT 84604

Landscape Architect
EPG Design
6949 South High Tech Drive, Suite 100
Midvale, Utah 84047

Specifications Writer
Friday Group
88 Mainelli Road
Middletown, CT

Code Consultant
Holmes
600 1st Avenue, Suite 200
Seattle, WA 98104

Fire Protection Engineer
Jensen Hughes
One Research Drive, Suite 300
Westborough, MA 01581

Vertical Transportation Consultant
Lorch Bates
19515 North Creek Parkway, Suite 3
Bothell, WA 98011

Structural Engineer
Magnusson Klemencic Associates
1301 5th Ave, Suite 3200
Seattle, WA 98101

Lighting Designer
O-
1319 SE MILK Blvd, Suite 210
Portland, Oregon 97219

Building Envelope Consultants
RDH
2101 N 34th St
Seattle, WA 98103

Accessibility Consultant
Studio Pacifica
2144 Westlake Ave N, Suite F
Seattle, WA 98109

MEP Engineer
WSP USA
1001 Fourth Ave., Suite 3100
Seattle, WA 98154

principal architect	TK, KM
project manager	TM, JB, SL, MD
	SK, SS, JR, CB, E

checked by JB
job no. 20162

revisions:

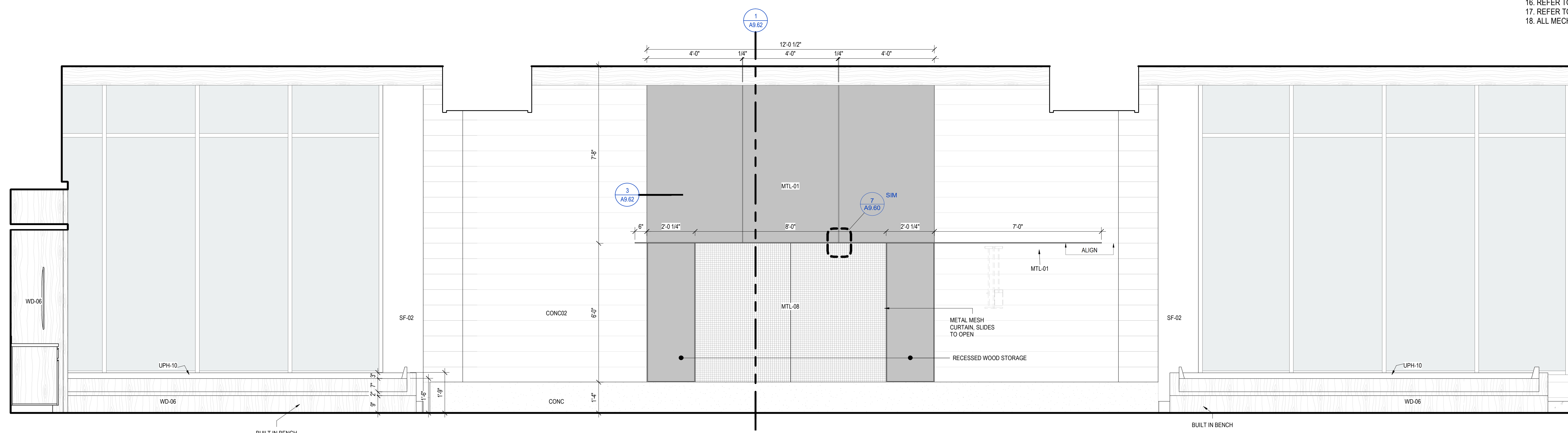
[illegible]

no.	date	by
-----	------	----

IFC SET 3 OF 3
05/31/2024

INTERIOR ELEVATIONS -
TOWER B- APRES SKI

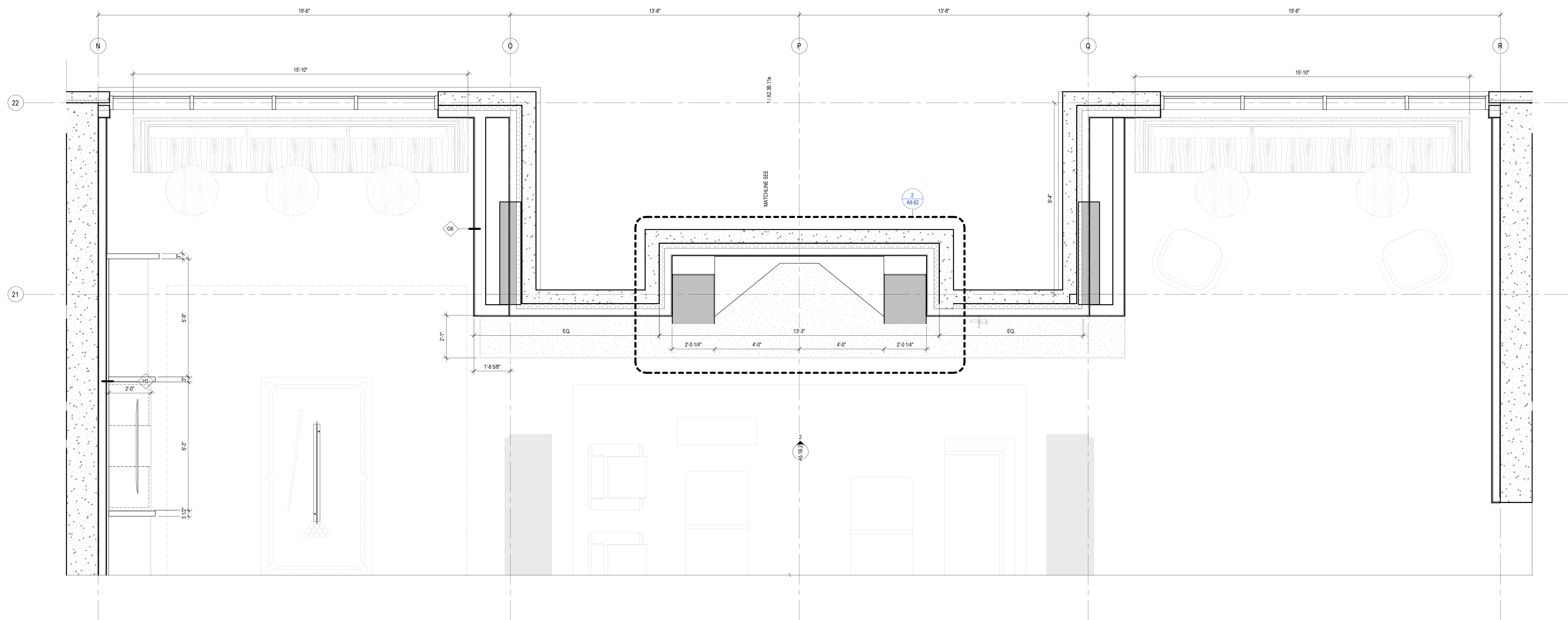
A5.1B.25



ENLARGED PLAN AND ELEVATION GENERAL NOTES

1. REFER TO SHEET A0.08 FOR ANSI OPTION A & OPTION B ACCESSIBILITY REQUIREMENTS.
2. REFER TO SHEET A0.07 FOR ANSI TYPE A ACCESSIBILITY REQUIREMENTS.
3. REFER TO SHEET A0.06 FOR ADA + PUBLIC SPACE ACCESSIBILITY REQUIREMENTS
4. ALL MAX, MIN, ALIGN AND CLEAR DIMENSIONS ARE TO FINISHED FACE OF WALL, U.N.O.
5. WHERE CLEAR AND ALIGN NOTATION CONFLICT WITH SPECIFIC DIMENSIONS, CLEAR AND ALIGN NOTATION ARE TO BE FOLLOWED.
6. GC TO ADD BACKING FOR FIXTURES AS REQUIRED, GC TO COORDINATE.

2 ENLARGED ELEVATION - SKI LOUNGE EAST
SCALE: 1/2" = 1'-0"



1 ENLARGED PLAN- TOWER B - LVL 1 - SKI LOUNGE EAST
SCALE: 1/2" = 1'-0"

