

STATE OF UTAH
THOMAS WALTER KUNDIG
7298177-0301
03/31/2017

- 159 South Jackson St, Suite 600
Seattle, Washington 98104 USA
+1 206 624 5670 disorkundig.com

Olson Kundig

SOMMET BLANC
9300 MARSAC AVE
PARK CITY, UT 84060



Pool Consultant
Cloward H2O
2896 N University Ave, Suite 290
Provo, UT 84604

Landscape Architect
EPG Design
6949 South High Tech Drive, Suite 101
Midvale, Utah 84047

Specifications Writer
Friday Group
88 Mainelli Road
Middletown, CT

Code Consultant
Holmes
600 1st Avenue, Suite 200A

Fire Protection Engineer
Jensen Hughes
One Research Drive, Suite 100

Vertical Transportation Consultant
Lorch Bates
19515 North Creek Parkway, Suite 300
Seattle, WA 98148
206.835.1100
lorch@lorchbates.com

Structural Engineer
Magnusson Klemencic Associates
1301 5th Ave, Suite 3200

Lighting Designer
O-
1319 SE MILK Blvd, Suite 21

Building Envelope Consultants
RDH
2101 N 34th St

Accessibility Consultant
Studio Pacifica
2144 Westlake Ave N, Suite

MEP Engineer
WSP USA
1001 Fourth Ave., Suite 310

principal architect	TK, KM
project manager	TM, JB, SL, MD

checked by JB
job no. 20162

revisions:

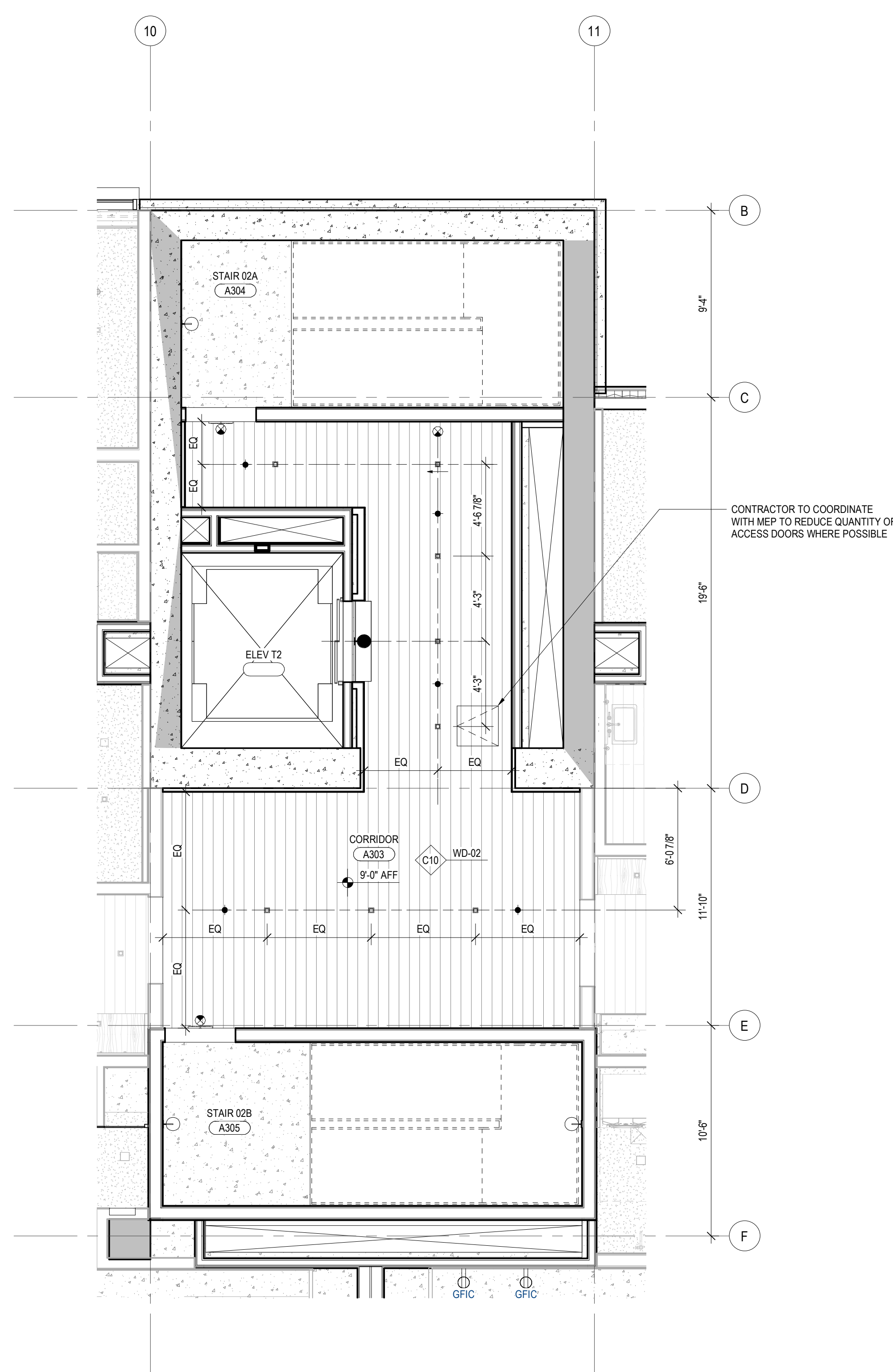
[illegible]

no.	date	b
-----	------	---

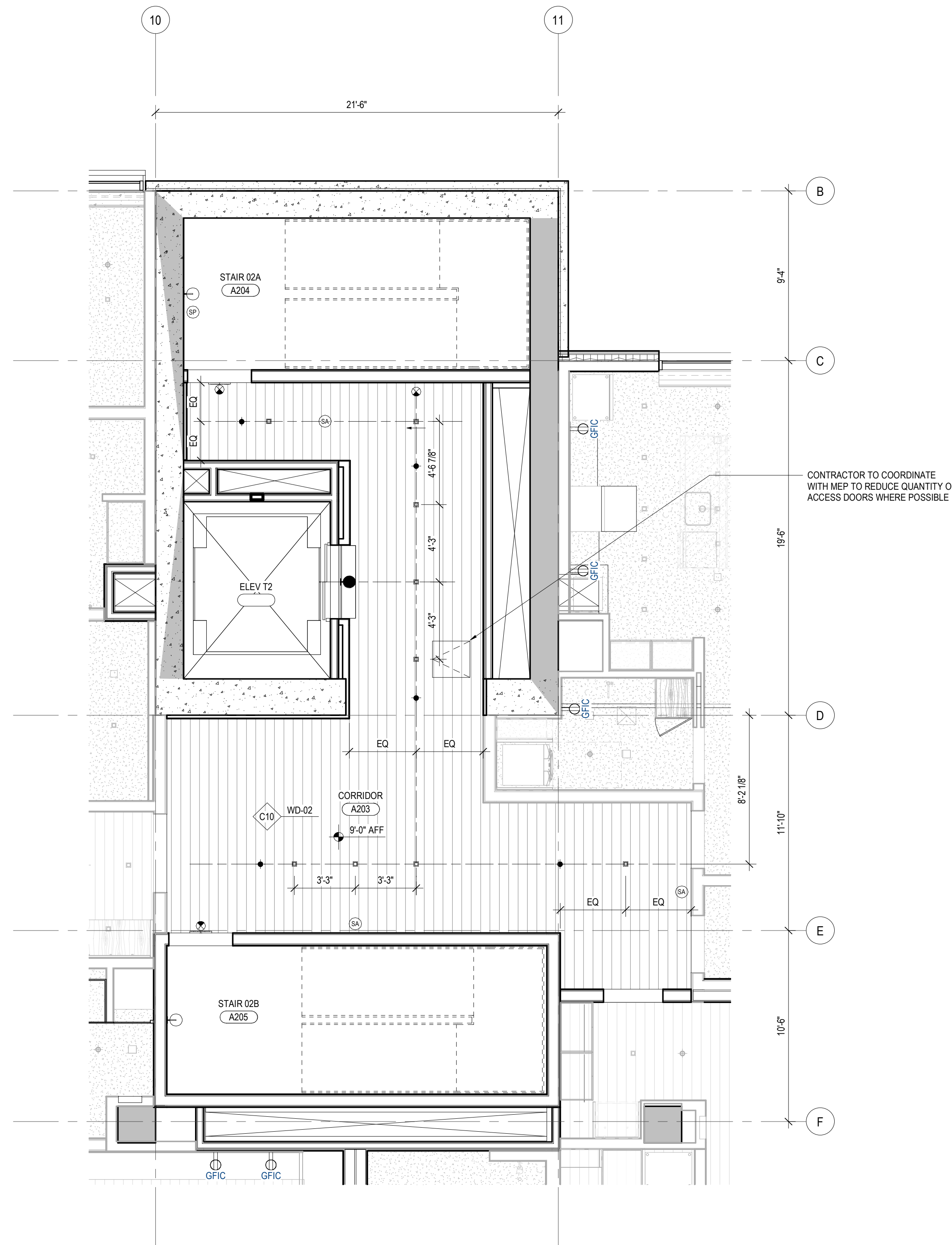
IFC SET 3 OF 3
05/31/2024

RCP - TOWER A - CORE
2

A6.1A.22



2 RCP - CORE 2 - L3-5
SCALE: 1/4" = 1'-0"



1 RCP - CORE 2 - L2
SCALE: 1/4" = 1'-0"

HATCH PATTERN INDICATE EXTENT OF CEILING TYPES
REFER TO CEILING ASSEMBLY FOR DETAIL INFORMATION

- | | |
|--|--|
| | WOOD CEILING |
| | SUSPENDED GYPSUM WALL BOARD |
| | STONE TILE |
| | ACOUSTICAL CEILING TILE |
| | PINNED INSULATION |
| | FABRIC PANEL PER GOLF SIMULATOR |
| | COMPOSITE METAL WALL PANEL |
| | SQUARE RECESSED DOWNLIGHT |
| | DECORATIVE SCOSCE |
| | DECORATIVE CUSTOM CHANDELIER |
| | ROUND PENDANT LIGHT |
| | J BOX |
| | LENSED LINEAR UTILITY STRIP |
| | CONCEALED LINEAR UNDERCABINET STRIP |
| | TRACK / RAIL / LINEAR LED |
| | SURFACE MOUNTED LIGHT BAR |
| | SURFACE MOUNT PANEL |
| | SPRINKLER |
| | SMOKE DETECTOR |
| | COMBINATION SMOKE / CARBON MONOXIDE DETECTOR |
| | FIRE ALARM SPEAKER |
| | FIRE ALARM STROBE |
| | FIRE ALARM COMBINATION SPEAKER / STROBE |
| | COMBINATION SMOKE / HEAT DETECTOR |
| | EXIT SIGN |
| | SECURITY CAMERA |
| | WIRELESS ACCESS POINT |
| | AV SPEAKER |
| | MOTORIZED SINGLE ROLLER SHADE - EQ-02 00 |
| | MOTORIZED DOUBLE ROLLER SHADE - EQ-02 01 |
| | CEILING FAN - MECH EXHAUST |
| | MECHANICAL LINEAR GRILLE |
| | CEILING ACCESS PANEL |
| | CEILING CONTROL POINT |
| | ELEVATION CHANGE |
| | RETURN AIR GRILLE |

