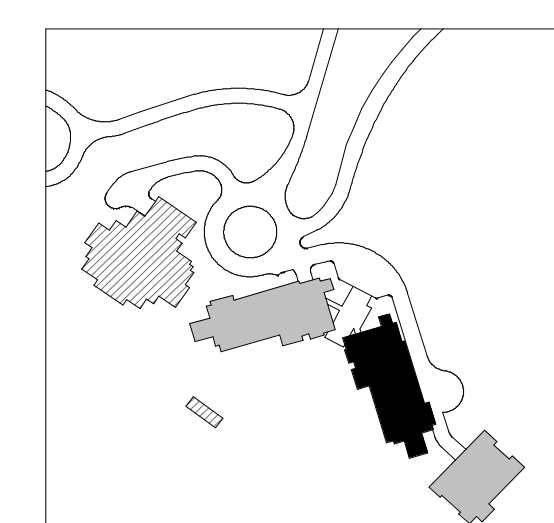


1. SPOT LEVELS/ELEVATIONS ARE RELATIVE TO FINISH FLOOR LEVEL AND INDICATE BOTTOM OF FINISH
2. ALL CEILINGS 9'-0" AFF U.N.O.
3. ALL CEILINGS ASSUMED TO BE U.N.O.
4. ALL DIMENSIONS TO FACE OF FINISH U.N.O.
5. SEE CONCRETE PLANS FOR EXTENT OF CONCRETE SLABS AND BEAMS
6. ALL ROOMS ARE SPACED TO PROVIDE A MINIMUM CLEARANCE HEIGHTS SHALL HAVE A CEILING HEIGHT OF NOT LESS THAN 7 FEET AND 6 INCHES. BATHROOMS, TOILET ROOMS, KITCHENS, STORAGE ROOMS AND LAUNDRY ROOMS SHALL HAVE A CEILING HEIGHT OF NOT LESS THAN 7 FEET.
7. SEE SHEET 10.0 AND 10.1 FOR FLOOR/Ceilings ASSEMBLIES.
8. SEE ELECTRICAL AND LIGHTING DRAWINGS FOR LIGHTING VALVES AND ADDITIONAL INFORMATION NOT SHOWN ON THIS SHEET FOR LIGHTING FIXTURES AND GRAB BARS.
9. REFER TO MECHANICAL FOR SPRINKLER AND EXTINGUISHER TYPE AND FOR LOCATIONS.
10. ALL WALL-MOUNTED FIXTURES IN COMMON AREAS AND AMENITY LEVELS TO PROTECT 4" FROM WALLS AND 12" FROM CEILING.
11. SMOKE DETECTORS SHALL BE LOCATED AT A MINIMUM OF 3" FROM SUPPLY AIR DIFFUSERS.
12. CENTER SPRINKLER HEAD LOCATIONS BETWEEN LIGHTING FIXTURES AND/OR SMOKE DETECTORS SHALL BE 12" FROM WALLS AND 12" FROM CEILING.
13. PROVIDE SMOKE DETECTOR AND SPRINKLER HEAD LOCATIONS WITH APPROPRIATE SHOP DRAWINGS. PROVIDE SIDE ARMS WHERE HEADS AND OTHER CEILING FIXTURES MAY BE IN CONFLICT. ALIGN ALL HEADS AND FIXTURES ORTHOGONALLY.
14. ALL CEILING DETAIL SHALL BE AS SHOWN. DO NOT REMOVE DROPPED CEILING OR SOFFITS WITH FASTENING AND JOINT TAPE AS REQUIRED FOR SPECIFIED RATING.
15. FIRE-RATED CEILING SHALL ALWAYS BE CONTINUOUS OVER CHASES/FURRED-OUT SPACES. PROVIDE FIRE-RESISTANT JOINTS AND SEALANT TO MAINTAIN CEILING VAULT. FIRESTOP ALL PENETRATIONS OF FIRE-RATED FLOOR/Ceiling ASSEMBLIES.
16. PROVIDE MECHANICAL DRAWINGS FOR ALL MECHANICAL EQUIPMENT. SEE MECHANICAL DRAWINGS FOR ADDITIONAL INSULATION REQUIREMENTS AT DUCTS.
17. CEILING ACCESS PANELS ARE REQUIRED AT ALL DAMPERS, VALVES, TELECOM ACCESS POINTS AND SOME OTHER ACCESS POINTS. COORDINATE LOCATIONS PRIOR TO INSTALLATION OF ANY OF THESE SYSTEMS.

ELECTRICAL AND MECHANICAL INFORMATION ARE SHOWN FOR COORDINATION PURPOSES.
REFER TO MECHANICAL DRAWINGS AND ELECTRICAL DRAWINGS FOR GENERAL INFORMATION
AND LOCATIONS.

HATCH PATTERN INDICATE EXTENT OF CEILING TYPES
REFER TO CEILING ASSEMBLY FOR DETAIL INFORMATION

	WOOD CEILING
	SUSPENDED GYPSUM WALL BOARD
	STONE TILE
	ACOUSTICAL CEILING TILE
	PINNED INSULATION
	FABRIC PANEL PER GOLF SIMULATOR
	COMPOSITE METAL WALL PANEL
	SQUARE RECESSED DOWNLIGHT
	DECORATIVE SCONCE
	DECORATIVE CUSTOM CHANDELIER
	ROUND PENDANT LIGHT
	J-BOX
	LENSED LINEAR UTILITY STRIP
	CONCEALED LINEAR UNDERCABINET STRIP
	TRACK / RAIL / LINEAR LED
	SURFACE MOUNTED LIGHT BAR
	SURFACE MOUNT PANEL
	SPRINKLER
	SMOKE DETECTOR
	COMBINATION SMOKE / CARBON MONOXIDE DETECTOR
	FIRE ALARM SPEAKER
	FIRE ALARM STROBE
	FIRE ALARM COMBINATION SPEAKER / STROBE
	COMBINATION SMOKE / HEAT DETECTOR
	EXIT SIGN
	SECURITY CAMERA
	WIRELESS ACCESS POINT
	AV SPEAKER
	MOTORIZED SINGLE ROLLER SHADE - EQ-02-00
	MOTORIZED DOUBLE ROLLER SHADE - EQ-02-01
	CEILING FAN - MECH EXHAUST
	MECHANICAL LINEAR GRILLE
	CEILING ACCESS PANEL
	CEILING CONTROL POINT
	ELEVATION CHANGE
	RETURN AIR GRILLE



1 TOWER B LVL P2 - AREA E
SCALE: 1/4" = 1'-0"

150 South Jackson St, Suite 600
Seattle, Washington 98104 USA
+1 206 624 5670 dsorkundig.com

Olson Kundig

SOMMET BLANC
9300 MARSAC AVE
PARK CITY, UT 84060



Aspen Group USA, LLC
PO Box 980022
Park City, Utah 84098

Pool Consultant
Cloward H20
2896 N University Ave, Suite 290
Provo, UT 84604

Landscape Architect
EPG Design
6949 South High Tech Drive, Suite 100
Midvale, Utah 84047

Specifications Writer
Friday Group
88 Mainelli Road
Middlebury, VT

Code Consultant
Holmes
600 1st Avenue, Suite 200A
Seattle, WA 98104

**Fire Protection Engineer
Jensen Hughes**
One Research Drive, Suite 1
Westborough, MA 01581

Vertical Transportation Consultant
Lorch Bates
19515 North Creek Parkway, Suite 304
Bothell, WA 98011

Structural Engineer
Magnusson Klemencic Associates
1301 5th Ave, Suite 3200
Seattle, WA 98101

Lighting Designer

1319 SE MLK Blvd, Suite 210
Portland, Oregon 97219

Building Envelope Consultants
RDH
2101 N 34th St
Seattle, WA 98103

Accessibility Consultant
Studio Pacifica
2144 Westlake Ave N, Suite F
Seattle, WA 98109

MEP Engineer
WSP USA
1001 Fourth Ave., Suite 3100
Seattle, WA 98154

principal architect TK, KM
project manager TM, JB, SL, MD
drawn by SK, SS, JR, CP, E
JF, BD

checked by JB
job no. 20062
date 05/31/2024

revisions:

[illegible]

no.	date	by
-----	------	----

IFC SET 3 OF 3
05/31/2024

RCP - TOWER B - LVL P2
- AREA E

A6.1B.02e