

RCP GENERAL NOTES

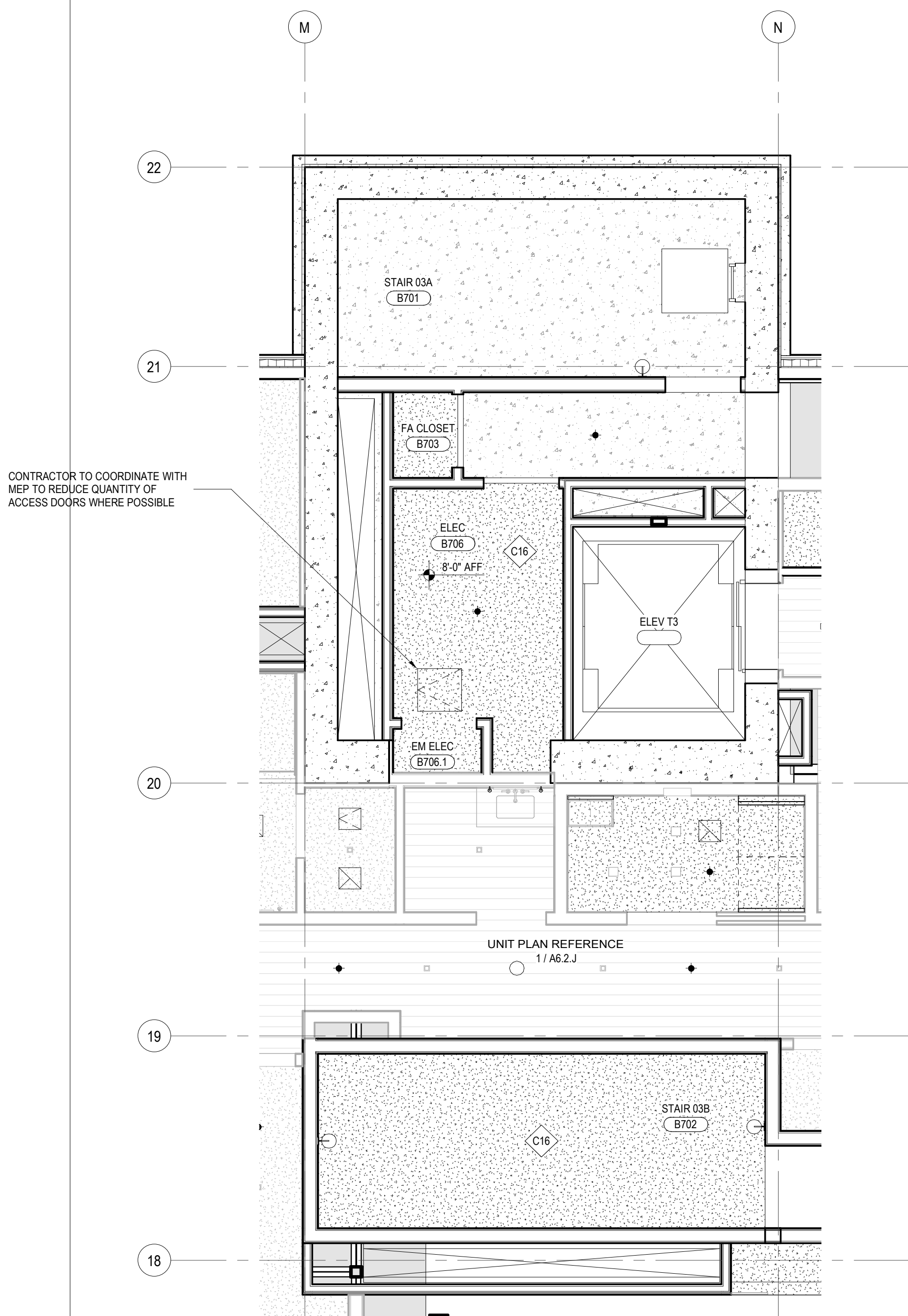
1. SPOT ELEVATIONS ARE RELATIVE TO FINISH FLOOR LEVEL AND INDICATE BOTTOM OF FINISH
2. ALL CEILINGS 9'-0" AFF U.N.O.
3. ALL CEILINGS ASSEMBLY C11 U.N.O.
4. ALL DIMENSIONS TO FACE OF FINISH U.N.O.
5. SEE CONCRETE PLANS FOR EXTENT OF CONCRETE SLABS AND BEAMS
6. OCCUPIABLE SPACES, HABITABLE SPACES AND CORRIDORS SHALL HAVE A CEILING HEIGHT OF NOT LESS THAN 7 FEET AND 6 INCHES. BATHROOMS, TOILET ROOMS, KITCHENS, STORAGE ROOMS AND LAUNDRY ROOMS SHALL HAVE A CEILING HEIGHT OF NOT LESS THAN 7 FEET.
7. SEE SHEET A0.10 AND A0.11 FOR FLOOR/CEILING ASSEMBLIES.
8. SEE ELECTRICAL AND LIGHTING DRAWINGS FOR LIGHTING LAYOUTS AND ADDITIONAL INFORMATION NOT SHOWN ON ARCHITECTURAL RCP DRAWINGS.
9. REFER TO MECHANICAL FOR SPRINKLER AND EXTINGUISHER TYPE AND FOR LOCATIONS.
10. ALL WALL-MOUNTED FIXTURES IN COMMON AREAS AND AMENITY LEVELS TO PROJECT 4" MAXIMUM FROM WALL FACE OR BE 6'-5" MINIMUM TO THE UNDERSIDE OF THE FIXTURE AFF.
11. SMOKE DETECTORS SHALL BE LOCATED A MINIMUM OF 3'-0" FROM SUPPLY AIR DIFFUSERS.
12. CENTER SPRINKLER HEAD LOCATIONS BETWEEN LIGHTING FIXTURES AND/OR SMOKE DETECTORS. TYPICAL LOCATION AND SPACING TO BE DETERMINED WITH APPROVED SHOP DRAWINGS. PROVIDE SIDE ARMS WHERE HEADS AND OTHER CEILING FIXTURES MAY BE IN CONFLICT. ALIGN ALL HEADS AND FIXTURES ORTHOGONALLY.
13. FIRE-RATED CEILINGS SHALL ALWAYS BE CONTINUOUS ABOVE DROPPED CEILINGS OR SOFFITS WITH FASTENING AND JOINT TAPE AS REQUIRED FOR SPECIFIED RATING.
14. FIRE-RATED CEILINGS SHALL ALWAYS BE CONTINUOUS OVER CHASES/FURRED-OUT SPACES TO PREVENT THE WALL CAVITY FROM COMMUNICATING WITH THE FLOOR/CEILING CAVITY. FIRESTOP ALL PENETRATIONS OF FIRE-RATED FLOOR/CEILING ASSEMBLIES.
15. SEE MECHANICAL DRAWINGS FOR DUCT ROUTING. SEE MECHANICAL DRAWINGS FOR ADDITIONAL INSULATION REQUIREMENTS AT DUCTS.
16. CEILING ACCESS PANELS ARE REQUIRED AT ALL DAMPERS, VALVES, TELECOM ACCESS POINTS, AND SOME MECHANICAL EQUIPMENT. COORDINATE LOCATIONS PRIOR TO INSTALLATION OF ANY OF THESE SYSTEMS

ELECTRICAL AND MECHANICAL INFORMATION ARE SHOWN FOR COORDINATION PURPOSES. REFER TO MECHANICAL DRAWINGS AND ELECTRICAL DRAWINGS FOR GENERAL INFORMATION AND LOCATIONS.

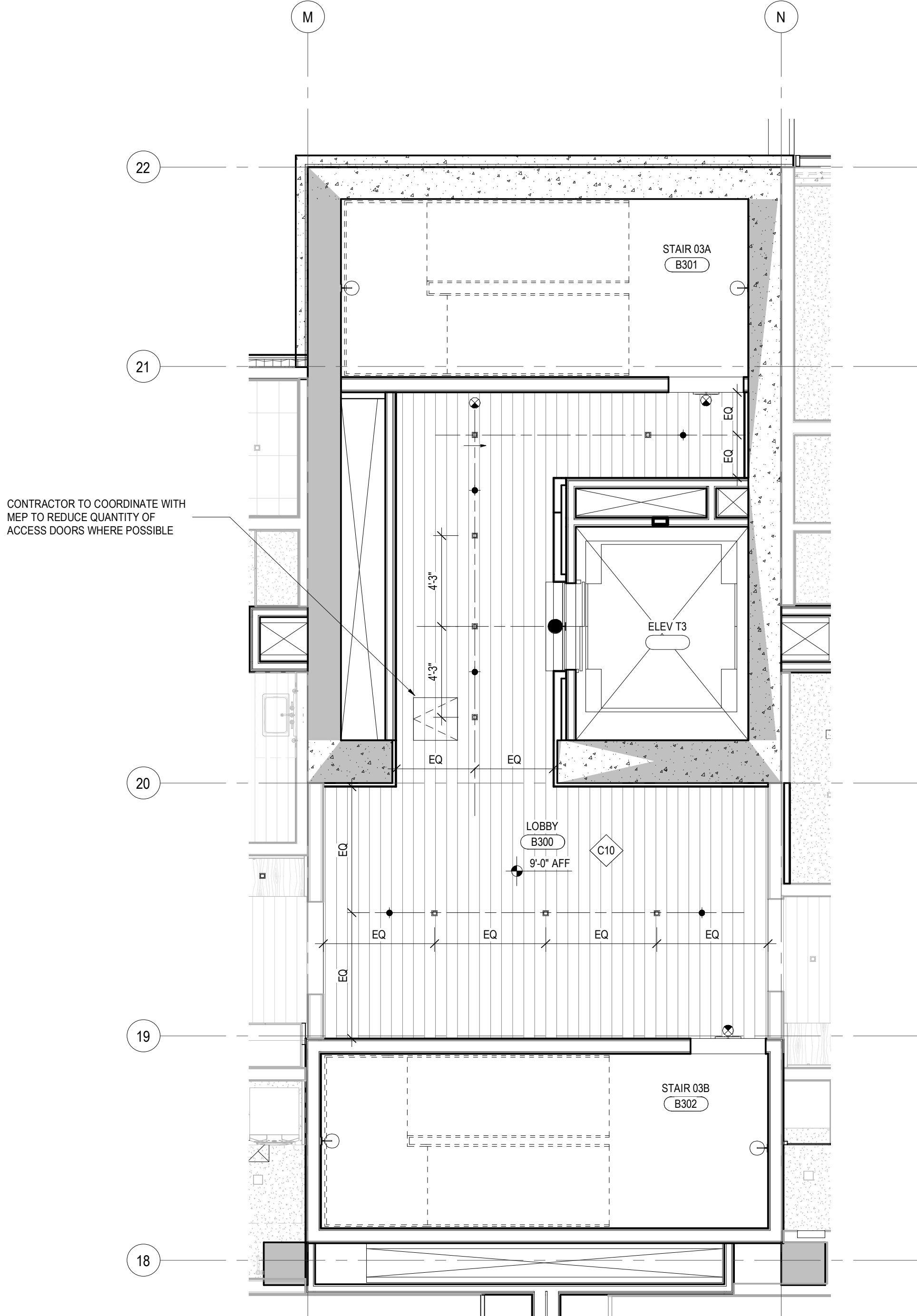
RCP LEGEND

HATCH PATTERN INDICATE EXTENT OF CEILING TYPES
REFER TO CEILING ASSEMBLY FOR DETAIL INFORMATION

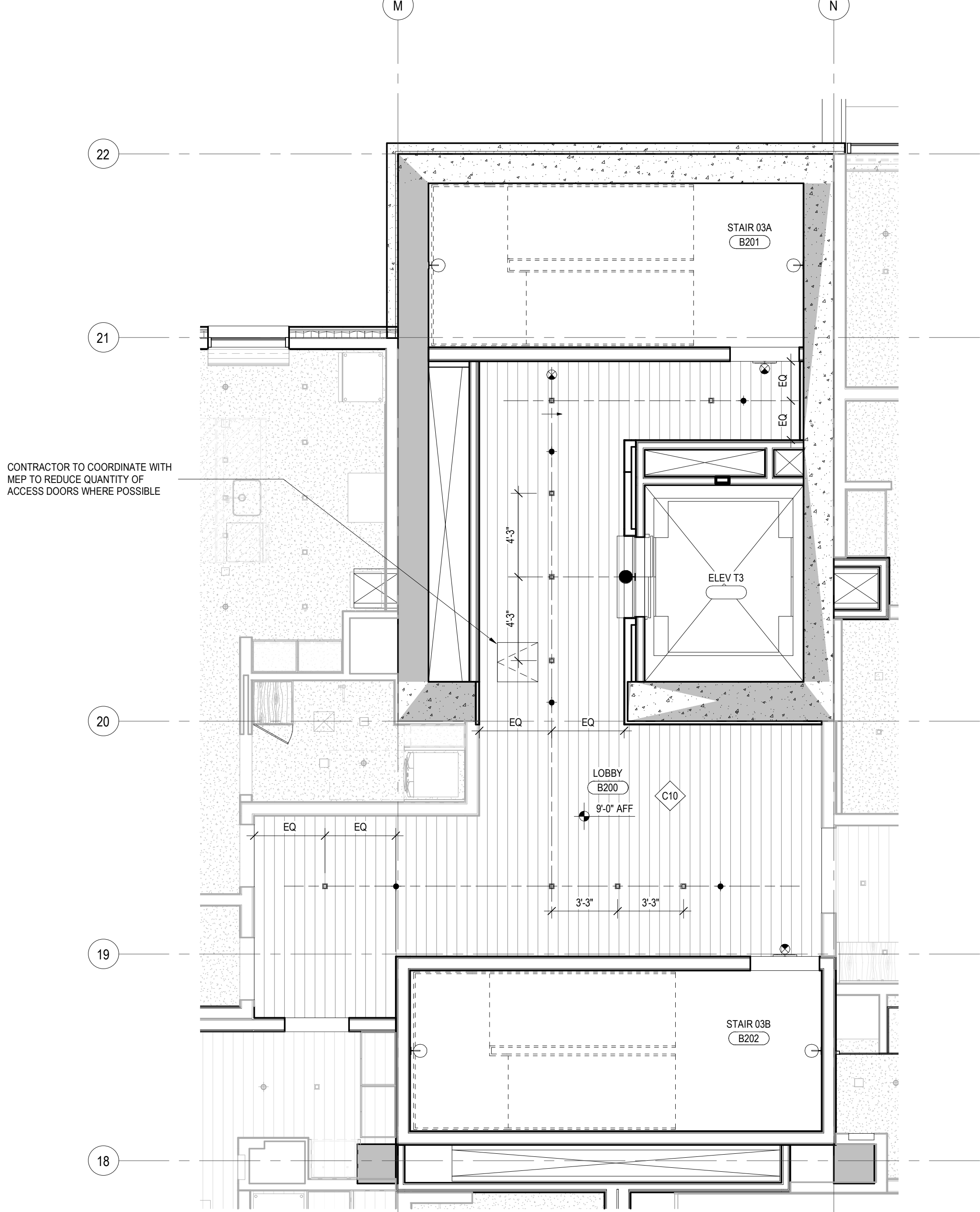
- | | |
|--|--|
| | WOOD CEILING |
| | SUSPENDED GYPSUM WALL BOARD |
| | STONE TILE |
| | ACOUSTICAL CEILING TILE |
| | PINNED INSULATION |
| | FABRIC PANEL PER GOLF SIMULATOR |
| | COMPOSITE METAL WALL PANEL |
| | SQUARE RECESSED DOWNLIGHT |
| | DECORATIVE SCONCE |
| | DECORATIVE CUSTOM CHANDELIER |
| | ROUND PENDANT LIGHT |
| | J-BOX |
| | LINEAR LED UTILITY STRIP |
| | CONCEALED LINEAR UNDERCABINET STRIP |
| | TRACK / RAIL / LINEAR LED |
| | SURFACE-MOUNTED LIGHT BAR |
| | SURFACE MOUNT PANEL |
| | SPRINKLER |
| | SMOKE DETECTOR |
| | COMBINATION SMOKE / CARBON MONOXIDE DETECTOR |
| | FIRE ALARM SPEAKER |
| | FIRE ALARM STROBE |
| | FIRE ALARM COMBINATION SPEAKER / STROBE |
| | COMBINATION SMOKE / HEAT DETECTOR |
| | EXIT SIGN |
| | SECURITY CAMERA |
| | WIRELESS ACCESS POINT |
| | AV SPEAKER |
| | MOTORIZED SINGLE ROLLER SHADE - EQ-02.00 |
| | MOTORIZED DOUBLE ROLLER SHADE - EQ-02.01 |
| | CEILING FAN - MECH EXHAUST |
| | MECHANICAL LINEAR GRILLE |
| | CEILING ACCESS PANEL |
| | CEILING CONTROL POINT |
| | ELEVATION CHANGE |
| | RETURN AIR GRILLE |



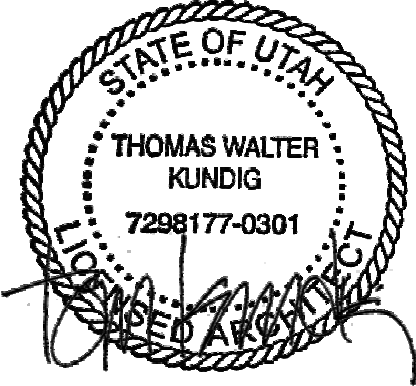
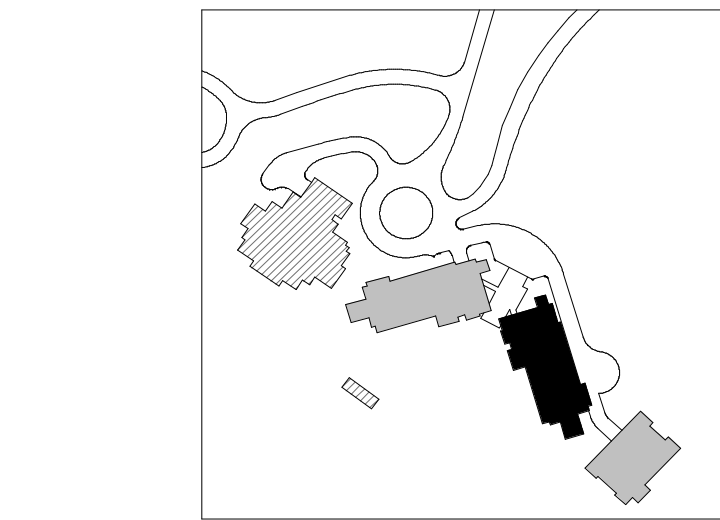
3 RCP - CORE 3 - L7
SCALE: 1/4" = 1'-0"



2 RCP - CORE 3 - L3-6
SCALE: 1/4" = 1'-0"



1 RCP - CORE 3 - L2
SCALE: 1/4" = 1'-0"



100 South Jackson St. Suite 600
Seattle, Washington 98104 USA
+1 206 824 6270 olsonkundig.com

Olson Kundig

SOMMET BLANC
5500 MARSCA AVE
PARK CITY, UT 84060



Aspen Group USA, LLC
P.O. Box 980022
Park City, Utah 84098

Pool Consultant
Cloward H2O
2096 N University Ave., Suite 290
Provo, UT 84604

Landscape Architect
EPG Design
6949 South High Tech Drive, Suite 100
Midvale, Utah 84047

Specifications Writer
Friday Group
88 Marrett Road
Medford, VT

Code Consultant
Holmes
800 1st Avenue, Suite 200A
Seattle, WA 98104

Fire Protection Engineer
Jensen Hughes
One Research Drive, Suite 305C
Westborough, MA 01581

Vertical Transportation Consultant
Lerch Bates
195 15 North Creek Parkway, Suite 304
Bellevue, WA 98011

Structural Engineer
Magnusson Karmachius Associates
1301 5th Ave., Suite 3200
Seattle, WA 98101

Lighting Designer
RDH
1319 SE MLK Blvd., Suite 210
Portland, Oregon 97219

Building Envelope Consultant
RDH
2101 N 34th St
Seattle, WA 98103

Accessibility Consultant
Studio Pacifica
2144 Westlake Ave N, Suite F
Seattle, WA 98109

MEP Engineer
WSP USA
1001 Fourth Ave., Suite 3100
Seattle, WA 98154

principal architect... TK, KM
project manager... TM, JR, SL, MD
drawn by... SK, SS, JR, CP, EA
"JF", BD

checked by... JB
job no. 20562
date 05/31/2024

revisions:

no. date by

IFC SET 3 OF 3
05/31/2024

RCP - TOWER B - CORE
3

A6.1B.23