

159 South Jackson St, Suite 600
Seattle, Washington 98104 USA
+1 206 624 5670 disorkundig.com

Olson Kundig

SOMMET BLANC
3300 MARSAC AVE
PARK CITY, UT 84060



Aspen Group USA, LLC
PO Box 980022
Park City, Utah 84098

Pool Consultant
Cloward H2O
2896 N University Ave, Suite 290
Provo, UT 84604

Landscape Architect
EPG Design
6949 South High Tech Drive, Suite 100
Midvale, Utah 84047

Specifications Writer
Friday Group
89 Mainelli Road
Middlebury, VT

Code Consultant
Holmes
600 1st Avenue, Suite 200
Seattle, WA 98104

Fire Protection Engineer
Jensen Hughes
One Research Drive, Suite 305C
Westborough, MA 01581

Vertical Transportation Consultant
Lorch Bates
19515 North Creek Parkway, Suite 3
Bothell, WA 98011

Structural Engineer
Magnusson Klemencic Associates
1301 5th Ave, Suite 3200
Seattle, WA 98101

Lighting Designer
O-
1319 SE MLK Blvd, Suite 210
Portland, Oregon 97219

Building Envelope Consultants
RDH
2101 N 34th St
Seattle, WA 98103

Accessibility Consultant
Studio Pacifica
2144 Westlake Ave N, Suite F
Seattle, WA 98109

MEP Engineer
WSP USA
1001 Fourth Ave., Suite 3100
Seattle, WA 98154

principal architect TK, KM
project manager TM, JB, SL, MD
drawn by SK, SS, JB, CP, EA

checked by JB
job no. 20062

revisions:

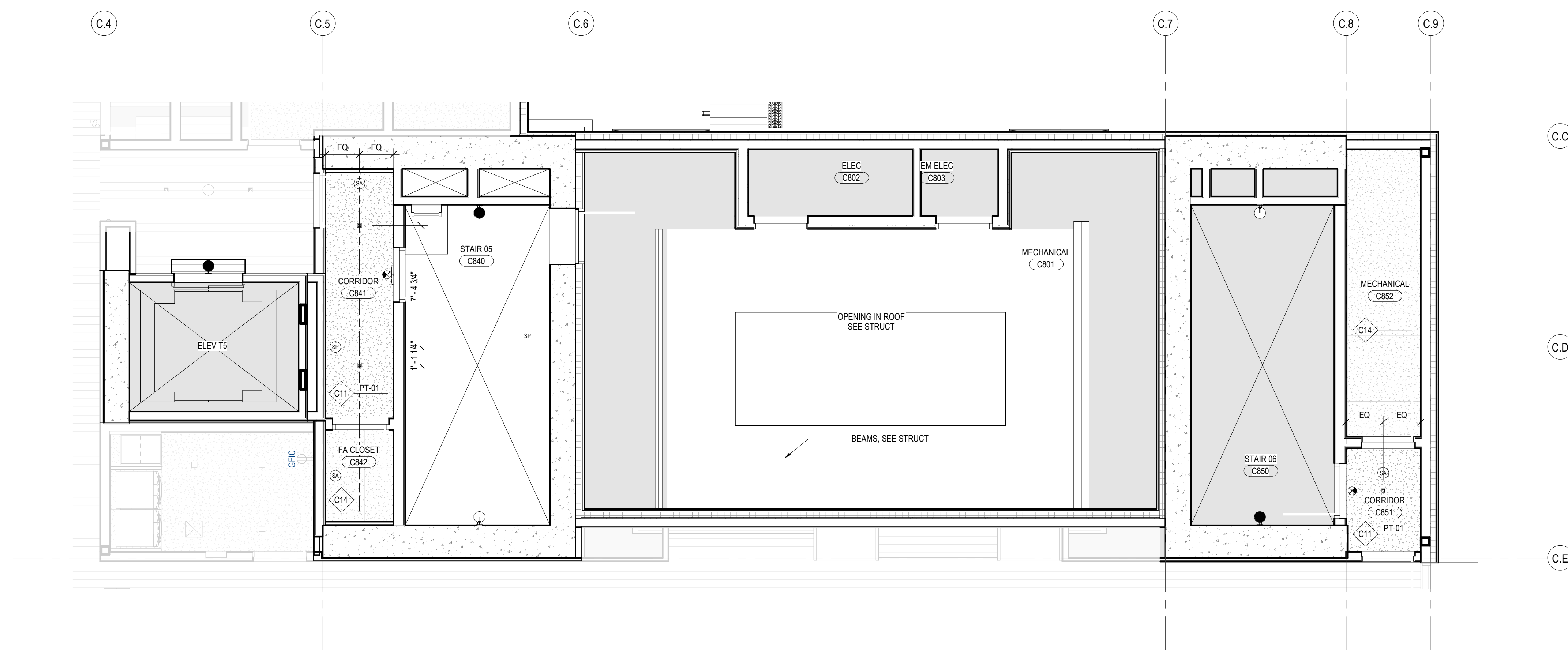
[illegible]

no.	date	by
-----	------	----

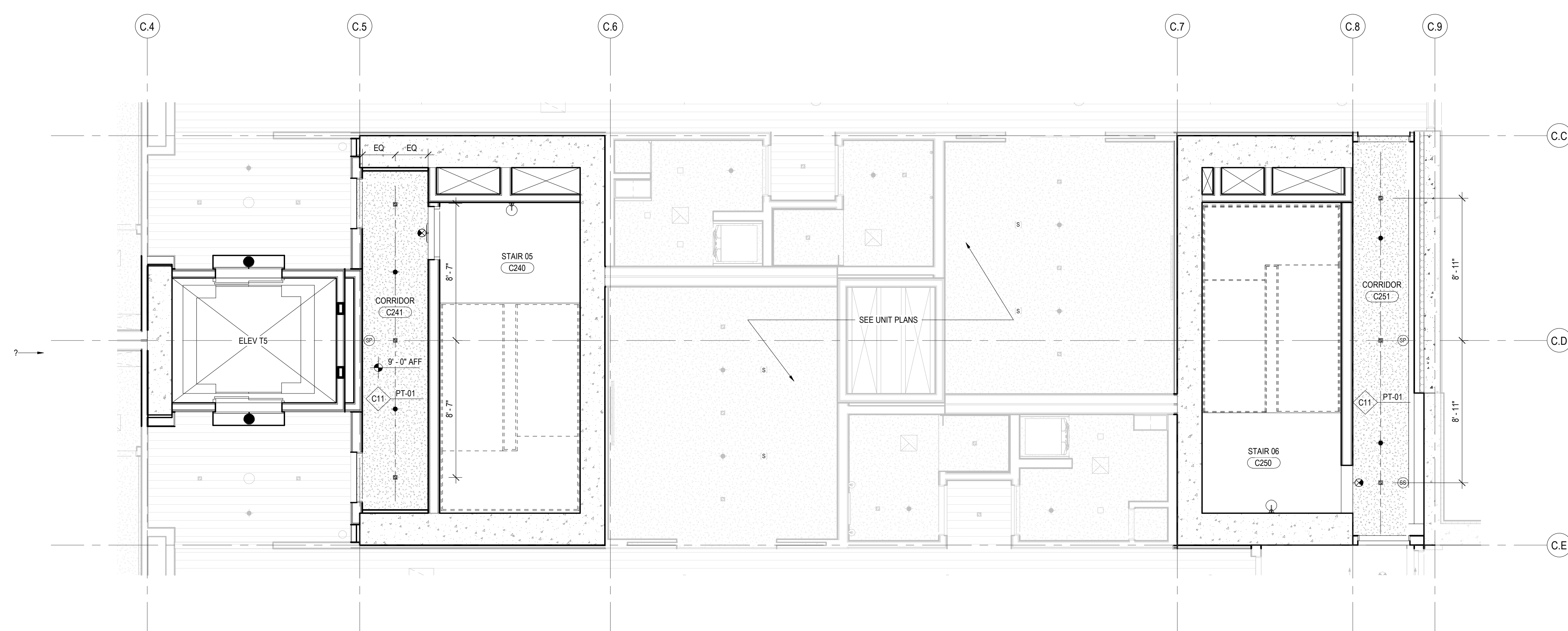
IFC SET 3 OF 3
05/31/2024

RCP - TOWER C - CORES

A6.1C.12



2 ENLARGED RCP - TOWER C - LVL 8 - CORE
SCALE: 1/4" = 1'-0"



1 ENLARGED RCP - TOWER C - LVL 2-7 - CORE
SCALE: 1/4" = 1'-0"

RCP GENERAL NOTES

1. SPOT ELEVATIONS ARE RELATIVE TO FINISH FLOOR LEVEL AND INDICATE BOTTOM OF FINISH
2. ALL CEILINGS 9'-0" AFF U.N.O.
3. ALL CEILINGS ASSEMBLY C/U N.O.
4. ALL DIMENSIONS TO FACE OF FINISH U.N.O.
5. USE CONCRETE PLANS FOR EXTENT OF CONCRETE SLABS AND BEAMS
6. OCCUPABLE SPACES, HABITABLE SPACES AND CORRIDORS SHALL HAVE A CEILING HEIGHT OF NOT LESS THAN 8'-0" AFF U.N.O. ALL OTHER AREAS AND MECHANICAL STORAGE ROOMS AND LAUNDRY ROOMS SHALL HAVE A CEILING HEIGHT OF NOT LESS THAN 7 FEET
7. SEE SHEET A10 AND A11 FOR FLOORCEILING ASSEMBLIES
8. MECHANICAL, HVAC AND ELECTRICAL EQUIPMENT SHALL BE LOCATED OUTSIDE OF ADDITIONAL INFORMATION NOT SHOWN ON ARCHITECTURAL RCP DRAWINGS
9. REFER TO MECHANICAL FOR SPRINKLER AND EXTINGUISHER TYPE AND FOR LOCATIONS
10. PROVIDE SMOKE DETECTORS IN ALL AREAS AND MECHANICAL AREAS TO PROTECT A MAXIMUM FROM WALL FACE OR BE 6" MINIMUM TO THE UNDERSIDE OF THE FIXTURE AFF.
11. SMOKE DETECTORS SHALL BE LOCATED A MINIMUM OF 3'-0" FROM SUPPLY AIR DIFFUSERS
12. PROVIDE DETECTORS IN ALL AREAS AND MECHANICAL AREAS TO PROTECT A MAXIMUM FROM DETECTORS, TYPICAL, LOCATION AND SPACING TO BE DETERMINED WITH APPROVED SHOP DRAWINGS. PROVIDE SIDE ARMS WHERE HEADS AND OTHER CEILING FIXTURES MAY BE IN THE WAY
13. FIRE-RATED CEILING SHALL ALWAYS BE CONTINUOUS ABOVE DROPPED CEILINGS OR SOFFITS WITH FASTENING AND JOINT TAP AS REQUIRED FOR SPECIFIED RATING
14. PROVIDE CEILING PENETRATIONS TO ALL AREAS AND MECHANICAL AREAS TO PREVENT THE WALL CAVITY FROM COMMUNICATING WITH THE FLOORING CAVITY
15. FIRESTOP ALL PENETRATIONS OF FIRE-RATED FLOOR/CEILING ASSEMBLIES
16. PROVIDE MECHANICAL, HVAC AND ELECTRICAL EQUIPMENT LOCATIONS AND SPACING TO ADDITIONAL INSULATION REQUIREMENTS AT DUCTS
17. CEILING ACCESS PANELS ARE REQUIRED AT ALL DAMPERS, VALVES, TELECOM ACCESS POINTS, AND SOME MECHANICAL EQUIPMENT. COORDINATE LOCATIONS WITH MECHANICAL AND ELECTRICAL CONTRACTORS

ELECTRICAL AND MECHANICAL INFORMATION ARE SHOWN FOR COORDINATION PURPOSES.
REFER TO MECHANICAL DRAWINGS AND ELECTRICAL DRAWINGS FOR GENERAL INFORMATION
AND LOCATIONS.

RCP LEGEND

HATCH PATTERN INDICATE EXTENT OF CEILING TYPES
REFER TO CEILING ASSEMBLY FOR DETAIL INFORMATION

- | | |
|--|--|
| | WOOD CEILING |
| | SUSPENDED GYPSUM WALL BOARD |
| | STONE TILE |
| | ACOUSTICAL CEILING TILE |
| | PINNED INSULATION |
| | FABRIC PANEL PER GOLF SIMULATOR |
| | COMPOSITE METAL WALL PANEL |
| | SQUARE RECESSED DOWNLIGHT |
| | DECORATIVE SCONCE |
| | DECORATIVE CUSTOM CHANDELIER |
| | ROUND PENDANT LIGHT |
| | J BOX |
| | LENSED LINEAR UTILITY STRIP |
| | CONCEALED LINEAR UNDERCABINET STRIP |
| | TRACK / RAIL / LINEAR LED |
| | SURFACE MOUNTED LIGHT BAR |
| | SURFACE MOUNT PANEL |
| | SPRINKLER |
| | SMOKE DETECTOR |
| | COMBINATION SMOKE / CARBON MONOXIDE DETECTOR |
| | FIRE ALARM SPEAKER |
| | FIRE ALARM STROBE |
| | FIRE ALARM COMBINATION SPEAKER / STROBE |
| | EXIT SIGN |
| | SECURITY CAMERA |
| | WIRELESS ACCESS POINT |
| | AV SPEAKER |
| | MOTORIZED SINGLE ROLLER SHADE - EQ-02-00 |
| | MOTORIZED DOUBLE ROLLER SHADE - EQ-02-01 |
| | CEILING FAN - MECH EXHAUST |
| | MECHANICAL LINEAR GRILLE |
| | CEILING ACCESS PANEL |
| | CEILING CONTROL POINT |

