

- 159 South Jackson St, Suite 600
Seattle, Washington 98104 USA
+1 206 624 5670 disorikundig.com

Olson Kundig

SOMMET BLANC
9300 MARSAC AVE
PARK CITY, UT 84060



Pool Consultant
Cloward H2O
1896 N University Ave, Suite 290
Provo, UT 84604

Landscape Architect
EPG Design
1949 South High Tech Drive, Suite 101
Midvale, Utah 84047

Specifications Writer
Friday Group
18 Mainelli Road
Middletown, NJ

Code Consultant
Holmes
100 1st Avenue, Suite 200A

Fire Protection Engineer
Jensen Hughes
One Research Drive, Suite 200

Vertical Transportation Consultant
Lorch Bates
9515 North Creek Parkway, Suite 300
Boulder, Colorado 80504
303.440.0000
lorchbates.com

Structural Engineer
Magnusson Klemencic Associates
301 5th Ave, Suite 3200

Lighting Designer
319 SE MLK Blvd, Suite 21

Building Envelope Consultants
RDH
101 N 34th St

Accessibility Consultant
Studio Pacifica
1144 Westlake Ave N, Suite

MEP Engineer
VSP USA
001 Fourth Ave., Suite 310

principal architect	TK, KM
project manager	TM, JB, SL, MD

checked by JB
job no. 20062

revisions:

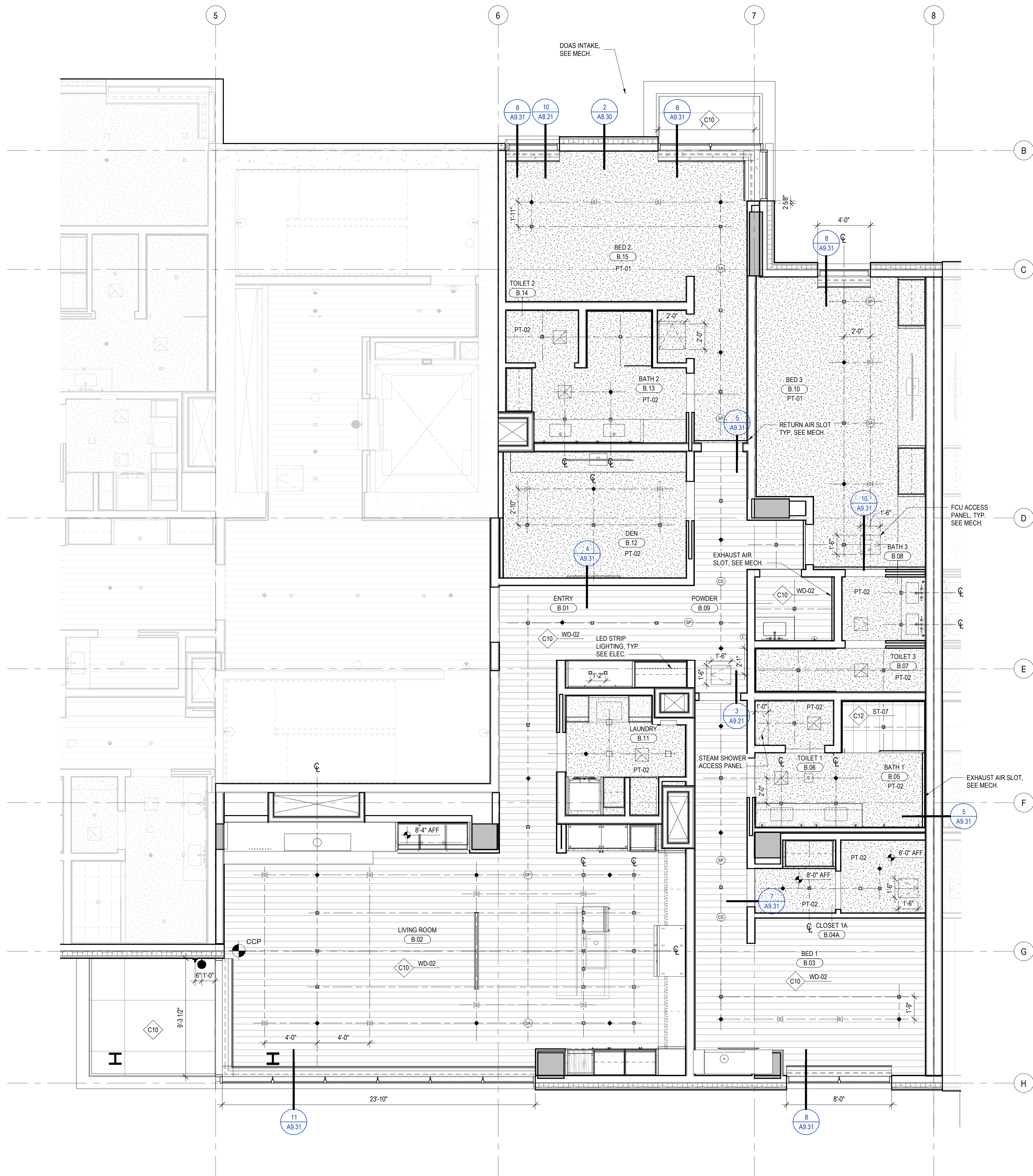
[illegible]

no.	date	b
-----	------	---

IFC SET 3 OF 3
05/31/2024

RCP - TOWER AB - UNIT
B

A6.2.B



1 RCP - TOWER A/B - UNIT B
SCALE: 1/4" = 1'-0"

