

- 159 South Jackson St, Suite 600
Seattle, Washington 98104 USA
+1 206 624 5670 disorikundig.com

Olson Kundig

SOMMET BLANC
9300 MARSAC AVE
PARK CITY, UT 84060

ASPEN GROUP

Pool Consultant
Cloward H2O
6896 N University Ave, Suite 290
Provo, UT 84604

Landscape Architect
EPG Design
1949 South High Tech Drive, Suite 100
Midvale, Utah 84047

Specifications Writer
Friday Group
18 Mainelli Road
Middlebury, VT

Code Consultant
Holmes
100 1st Avenue, Suite 200A
Seattle, WA 98104

Fire Protection Engineer
Jensen Hughes
One Research Drive, Suite 200
Vestiborough, MA 01581

Vertical Transportation Consultant
Lorch Bates
9515 North Creek Parkway, Suite
Rothell WA 98011

Structural Engineer
Magnusson Klemencic Associates
301 5th Ave, Suite 3200
Seattle, WA 98101

Lighting Designer
D-
319 SE MLK Blvd, Suite 210
Portland, Oregon 97219

**Building Envelope Consultants
RDH**
1101 N 34th St
Seattle, WA 98103

Accessibility Consultant
Studio Pacifica
1144 Westlake Ave N, Suite F
Seattle, WA 98109

MEP Engineer
VSP USA
1001 Fourth Ave., Suite 3100
Seattle, WA 98154

principal architect TK, KM
project manager TM, JB, SL, MD
SK, SS, JR, CR, EA

checked by JB
job no. 20062

revisions:

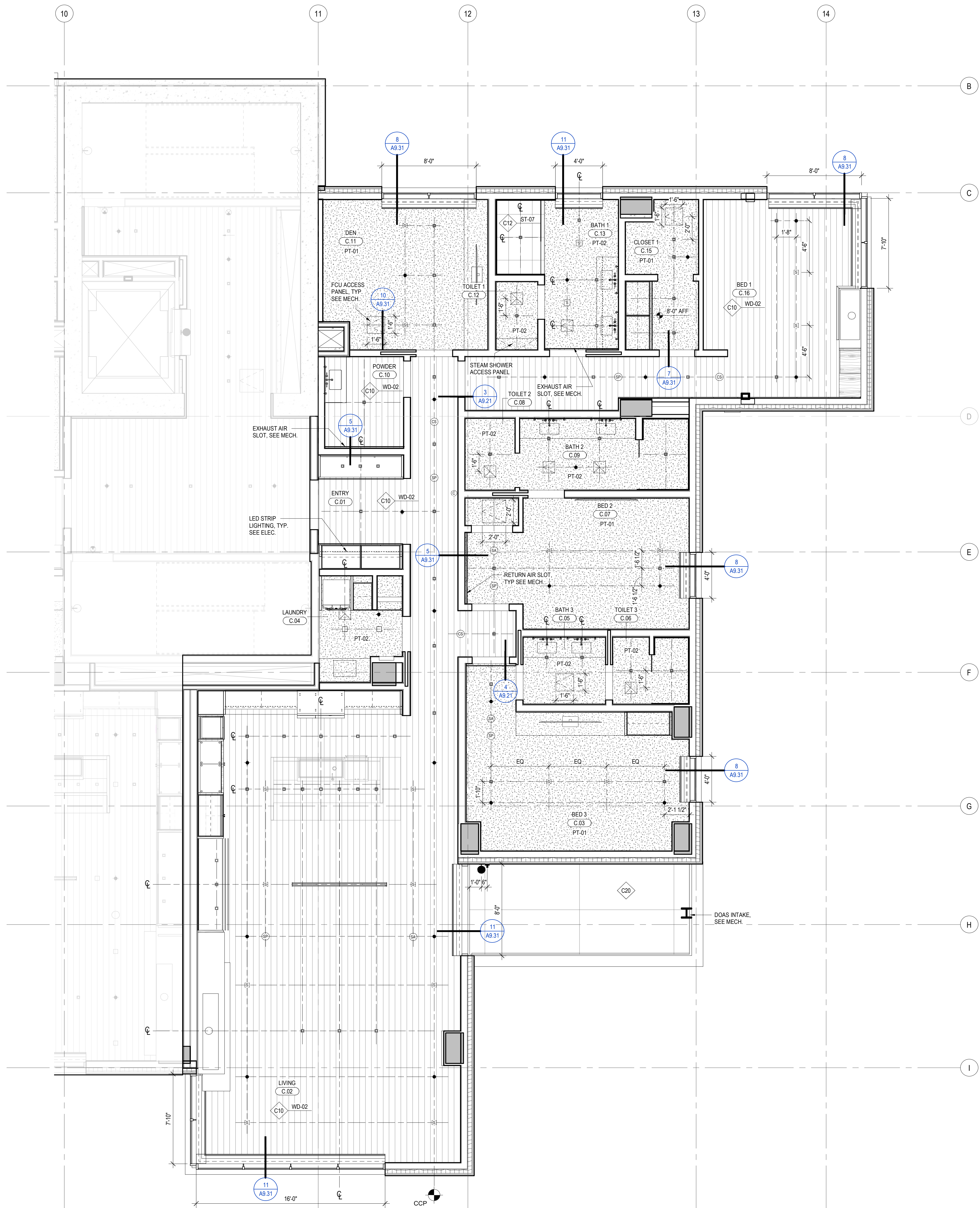
[illegible]

no.	date	by
-----	------	----

IFC SET 3 OF 3
05/31/2024

RCP - TOWER AB - UNIT
C

A6.2.C



1 RCP - TOWER A/B - UNIT C
SCALE: 1/4" = 1'-0"

