

- 159 South Jackson St, Suite 600  
Seattle, Washington 98104 USA  
+1 206 624 5670 [disorikundig.com](mailto:disorikundig.com)

Olson Kundig

**SOMMET BLANC**  
9300 MARSAC AVE  
PARK CITY, UT 84060



**ASPEN** GROUP

**Pool Consultant**  
**Cloward H20**  
2896 N University Ave, Suite 290  
Provo, UT 84604

**Specifications Writer**  
**Friday Group**  
88 Mainelli Road  
Middletown, CT

Fire Protection Engineer  
**Jensen Hughes**  
One Research Drive, Suite 305C

Structural Engineer  
Magnusson Klemencic Associates  
1301 5th Ave. Suite 3200

**Building Envelope Consultant**  
**RDH**

MEP Engineer  
WSP USA

principal architect TK, KM  
project manager TM, JB, SL, MD  
drawn by SK, SS, JR, CP,  
JC, DP

revisions:

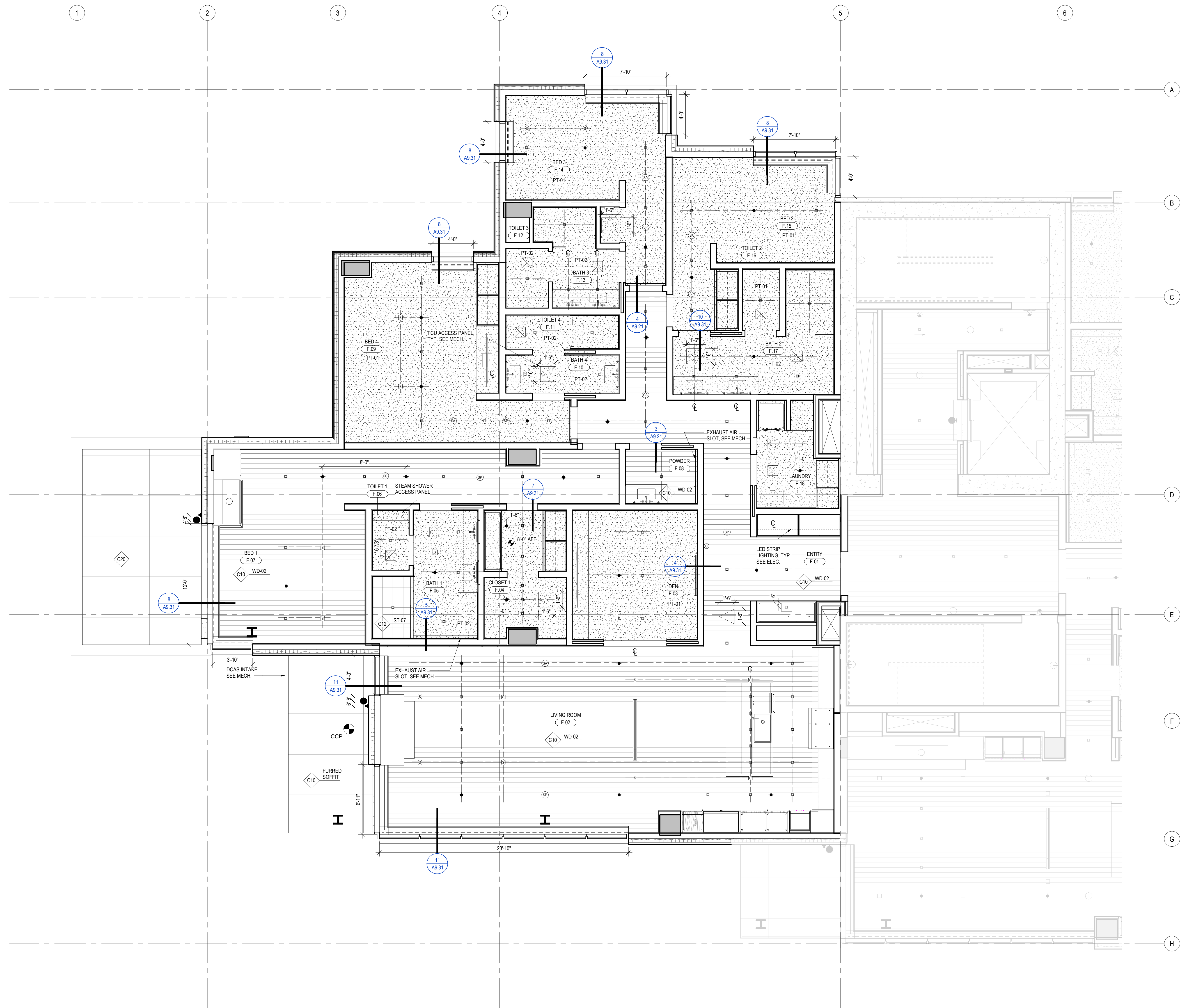
[illegible]

no.	date
-----	------

IFC SET 3 OF 3  
05/31/2024

RCP - TOWER AB - UNIT  
F

## A6.2.F



1 RCP - TOWER A/B - UNIT F  
SCALE: 1/4" = 1'-0"

