

- 159 South Jackson St, Suite 600
Seattle, Washington 98104 USA
+1 206 624 5670 disorikundig.com

Olson Kundig

SOMMET BLANC
9300 MARSAC AVE
PARK CITY, UT 84060

ASPEN GROUP

HATCH PATTERN INDICATE EXTENT OF CEILING TYPES
REFER TO CEILING ASSEMBLY FOR DETAIL INFORMATION

	WOOD CEILING
	SUSPENDED GYPSUM WALL BOARD
	STONE TILE
	ACOUSTICAL CEILING TILE
	PINNED INSULATION
	FABRIC PANEL PER GOLF SIMULATOR
	COMPOSITE METAL WALL PANEL
	SQUARE RECESSED DOWNLIGHT
	DECORATIVE SCONCE
	DECORATIVE CUSTOM CHANDELIER
	ROUND PENDANT LIGHT
	J-BOX
	LENSED LINEAR UTILITY STRIP
	CONCEALED LINEAR UNDERCABINET STRIP
	TRACK / RAIL / LINEAR LED
	SURFACE-MOUNTED LIGHT BAR
	SURFACE MOUNT PANEL
	SPRINKLER
	SMOKE DETECTOR
	COMBINATION SMOKE / CARBON MONOXIDE DETECTOR
	FIRE ALARM SPEAKER
	FIRE ALARM STROBE
	FIRE ALARM COMBINATION SPEAKER / STROBE
	COMBINATION SMOKE / HEAT DETECTOR
	EXIT SIGN
	SECURITY CAMERA
	WIRELESS ACCESS POINT
	AV SPEAKER
	MOTORIZED SINGLE ROLLER SHADE - EQ-02-00
	MOTORIZED DOUBLE ROLLER SHADE - EQ-02-01
	CEILING FAN - MECH EXHAUST
	MECHANICAL LINEAR GRILLE
	CEILING ACCESS PANEL
	CEILING CONTROL POINT
	ELEVATION CHANGE
	RETURN AIR GRILLE

Landscape Architect
EPG Design
6949 South High Tech Drive, Suite 100
Midvale, Utah 84047

Specifications Writer
Friday Group
88 Mainelli Road

Code Consultant
Holmes
600 1st Avenue, Suite 200
Seattle, WA 98104

Fire Protection Engineer
Jensen Hughes
One Research Drive, Suite 30
Westborough, MA 01581

Vertical Transportation Consultant
Lorch Bates
19515 North Creek Parkway, Suite 300
Bothell, WA 98011

Structural Engineer
Magnusson Klemencic Associates
1301 5th Ave, Suite 3200
Seattle, WA 98101

Lighting Designer
O-
1319 SE MLK Blvd, Suite 210
Portland, Oregon 97219

Building Envelope Consultant
RDH
2101 N 34th St
Seattle, WA 98103

Accessibility Consultant
Studio Pacifica
2144 Westlake Ave N, Suite F
Seattle, WA 98109

MEP Engineer
WSP USA
1001 Fourth Ave., Suite 3100
Seattle, WA 98154

principal architect TK, KM
project manager TM, JB, SL, MD
drawn by SK, SS, JR, CP, EA,
JF, BD

checked by JB
job no. 20062
date 05/31/2024

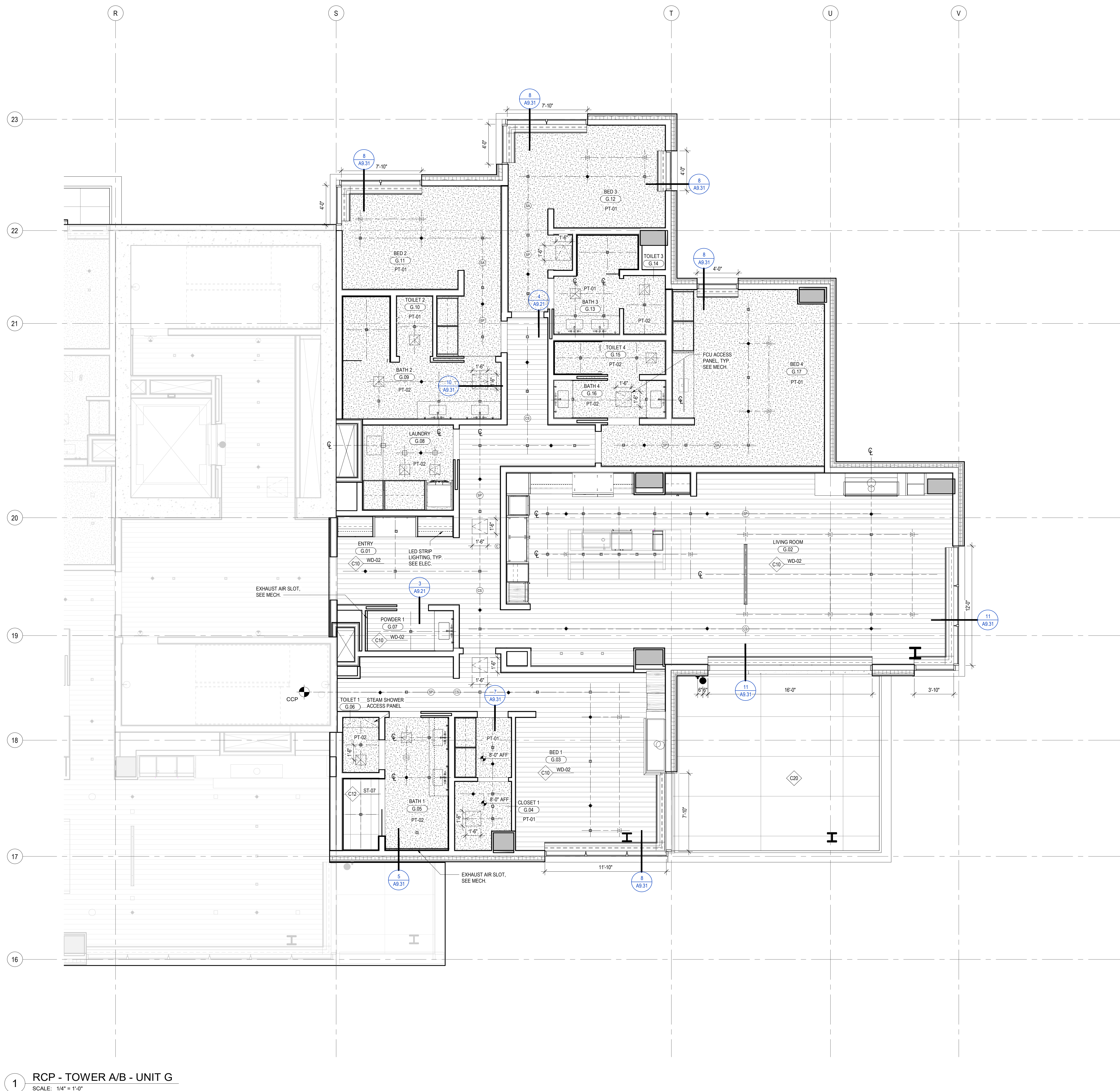
revisions:

no. date by

IFC SET 3 OF 3
05/31/2024

RCP - TOWER AB - UNIT
G

A6.2.G



1 RCP - TOWER A/B - UNIT G
SCALE: 1/4" = 1'-0"

