

RCP GENERAL NOTES

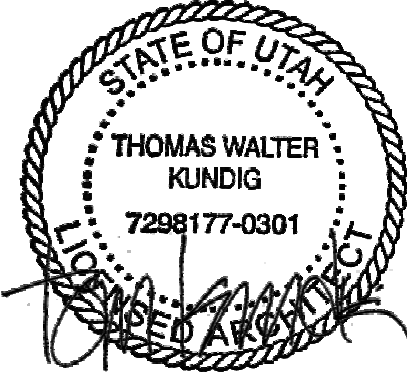
1. SPOT ELEVATIONS ARE RELATIVE TO FINISH FLOOR LEVEL AND INDICATE BOTTOM OF FINISH
2. ALL CEILINGS 9'-0" AFF U.N.O.
3. ALL CEILINGS ASSEMBLY C11 U.N.O.
4. ALL DIMENSIONS TO FACE OF FINISH U.N.O.
5. SEE CONCRETE PLANS FOR EXTENT OF CONCRETE SLABS AND BEAMS
6. OCCUPIABLE SPACES, HABITABLE SPACES AND CORRIDORS SHALL HAVE A CEILING HEIGHT OF NOT LESS THAN 7 FEET AND 6 INCHES. BATHROOMS, TOILET ROOMS, KITCHENS, STORAGE ROOMS AND LAUNDRY ROOMS SHALL HAVE A CEILING HEIGHT OF NOT LESS THAN 7 FEET.
7. SEE SHEET A0.10 AND A0.11 FOR FLOOR/CEILING ASSEMBLIES
8. SEE ELECTRICAL AND LIGHTING DRAWINGS FOR LIGHTING LAYOUTS AND ADDITIONAL INFORMATION NOT SHOWN ON ARCHITECTURAL RCP DRAWINGS
9. REFER TO MECHANICAL FOR SPRINKLER AND EXTINGUISHER TYPE AND FOR LOCATIONS
10. ALL WALL-MOUNTED FIXTURES IN COMMON AREAS AND AMENITY LEVELS TO PROJECT 4" MAXIMUM FROM WALL FACE OR BE 8'-8" MINIMUM TO THE UNDERSIDE OF THE FIXTURE AFF.
11. SMOKE DETECTORS SHALL BE LOCATED A MINIMUM OF 3'-0" FROM SUPPLY AIR DIFFUSERS.
12. CENTER SPRINKLER HEAD LOCATIONS BETWEEN LIGHTING FIXTURES AND/OR SMOKE DETECTORS, TYPICAL. LOCATION AND SPACING TO BE DETERMINED WITH APPROVED SHOP DRAWINGS. PROVIDE SIDE ARMS WHERE HEADS AND OTHER CEILING FIXTURES MAY BE IN CONFLICT. ALIGN ALL HEADS AND FIXTURES ORTHOGONALLY.
13. FIRE-RATED CEILINGS SHALL ALWAYS BE CONTINUOUS ABOVE DROPPED CEILINGS OR SOFFITS WITH FASTENING AND JOINT TAPE AS REQUIRED FOR SPECIFIED RATING.
14. FIRE-RATED CEILINGS SHALL ALWAYS BE CONTINUOUS OVER CHASES/FURRED-OUT SPACES TO PREVENT THE WALL CAVITY FROM COMMUNICATING WITH THE FLOOR/CEILING CAVITY. FIRESTOP ALL PENETRATIONS OF FIRE-RATED FLOOR/CEILING ASSEMBLIES.
15. SEE MECHANICAL DRAWINGS FOR DUCT ROUTING. SEE MECHANICAL DRAWINGS FOR ADDITIONAL INSULATION REQUIREMENTS AT DUCTS.
16. CEILING ACCESS PANELS ARE REQUIRED AT ALL DAMPERS, VALVES, TELECOM ACCESS POINTS, AND SOME MECHANICAL EQUIPMENT. COORDINATE LOCATIONS PRIOR TO INSTALLATION OF ANY OF THESE SYSTEMS

ELECTRICAL AND MECHANICAL INFORMATION ARE SHOWN FOR COORDINATION PURPOSES. REFER TO MECHANICAL DRAWINGS AND ELECTRICAL DRAWINGS FOR GENERAL INFORMATION AND LOCATIONS.

RCP LEGEND

HATCH PATTERN INDICATE EXTENT OF CEILING TYPES  
REFER TO CEILING ASSEMBLY FOR DETAIL INFORMATION

- |  |                                              |
|--|----------------------------------------------|
|  | WOOD CEILING                                 |
|  | SUSPENDED GYPSUM WALL BOARD                  |
|  | STONE TILE                                   |
|  | ACOUSTICAL CEILING TILE                      |
|  | PINNED INSULATION                            |
|  | FABRIC PANEL PER GOLF SIMULATOR              |
|  | COMPOSITE METAL WALL PANEL                   |
|  | SQUARE RECESSED DOWNLIGHT                    |
|  | DECORATIVE SCONCE                            |
|  | DECORATIVE CUSTOM CHANDELIER                 |
|  | ROUND PENDANT LIGHT                          |
|  | J-BOX                                        |
|  | LENSED LINEAR UTILITY STRIP                  |
|  | CONCEALED LINEAR UNDERCABINET STRIP          |
|  | TRACK / RAIL / LINEAR LED                    |
|  | SURFACE MOUNTED LIGHT BAR                    |
|  | SURFACE MOUNT PANEL                          |
|  | SPRINKLER                                    |
|  | SMOKE DETECTOR                               |
|  | COMBINATION SMOKE / CARBON MONOXIDE DETECTOR |
|  | FIRE ALARM STROBE                            |
|  | FIRE ALARM SPEAKER                           |
|  | FIRE ALARM COMBINATION SPEAKER / STROBE      |
|  | COMBINATION SMOKE / HEAT DETECTOR            |
|  | EXIT SIGN                                    |
|  | SECURITY CAMERA                              |
|  | WIRELESS ACCESS POINT                        |
|  | AV SPEAKER                                   |
|  | MOTORIZED SINGLE ROLLER SHADE - EQ-02.00     |
|  | MOTORIZED DOUBLE ROLLER SHADE - EQ-02.01     |
|  | CEILING FAN - MECH EXHAUST                   |
|  | MECHANICAL LINEAR GRILLE                     |
|  | CEILING ACCESS PANEL                         |
|  | CEILING CONTROL POINT                        |
|  | ELEVATION CHANGE                             |
|  | RETURN AIR GRILLE                            |



100 South Jackson St. Suite 600  
Seattle, Washington 98104 USA  
+1 206 824 6870 olsonkundig.com

Olson Kundig

SOMMET BLANC  
5900 MARSCA AVE  
PARK CITY, UT 84090



Aspen Group USA, LLC  
P.O. Box 980022  
Park City, Utah 84098

Pool Consultant  
Cloward H2O  
2096 N University Ave, Suite 290  
Provo, UT 84604

Landscaping Architect  
EPG Design  
6949 South High Tech Drive, Suite 100  
Midvale, Utah 84047

Specifications Writer  
Friday Group  
88 Mainelli Road  
Middlebury, VT

Code Consultant  
Holmes  
800 1st Avenue, Suite 200A  
Seattle, WA 98104

Fire Protection Engineer  
Jensen Hughes  
One Research Drive, Suite 305C  
Westborough, MA 01581

Vertical Transportation Consultant  
Lerch Bates  
19515 North Creek Parkway, Suite 304  
Bellevue, WA 98011

Structural Engineer  
Magnusson Karmachius Associates  
1301 6th Ave, Suite 3200  
Seattle, WA 98101

Lighting Designer  
1319 SE MLK Blvd, Suite 210  
Portland, Oregon 97219

Building Envelope Consultant  
RDH  
2101 N 34th St  
Seattle, WA 98103

Accessibility Consultant  
Studio Pacifica  
2144 Westlake Ave N, Suite F  
Seattle, WA 98109

MEP Engineer  
WSP USA  
1001 Fourth Ave., Suite 3100  
Seattle, WA 98154

principal architect... TK, KM  
project manager... TM, JR, SL, MD  
drawn by... SK, SS, JR, CP, EA  
"JT", BD

checked by... JB  
job no. 2052  
date 05/1/2024

revisions:  
1.  
2.  
3.  
4.  
5.  
6.  
7.  
8.  
9.  
10.

no. date by

1.  
2.  
3.  
4.  
5.  
6.  
7.  
8.  
9.  
10.

1.  
2.  
3.  
4.  
5.  
6.  
7.  
8.  
9.  
10.

1.  
2.  
3.  
4.  
5.  
6.  
7.  
8.  
9.  
10.

1.  
2.  
3.  
4.  
5.  
6.  
7.  
8.  
9.  
10.

1.  
2.  
3.  
4.  
5.  
6.  
7.  
8.  
9.  
10.

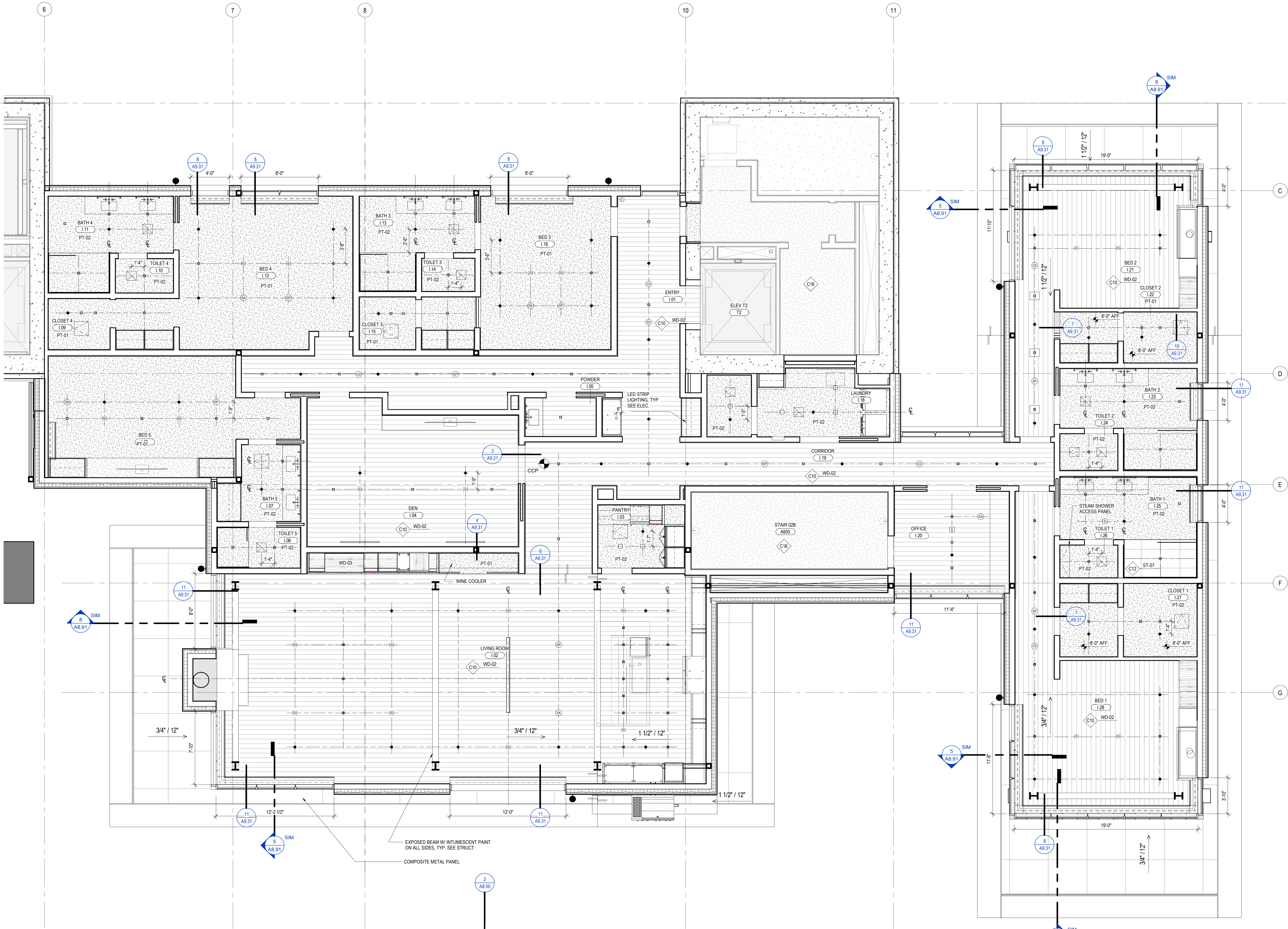
1.  
2.  
3.  
4.  
5.  
6.  
7.  
8.  
9.  
10.

1.  
2.  
3.  
4.  
5.  
6.  
7.  
8.  
9.  
10.

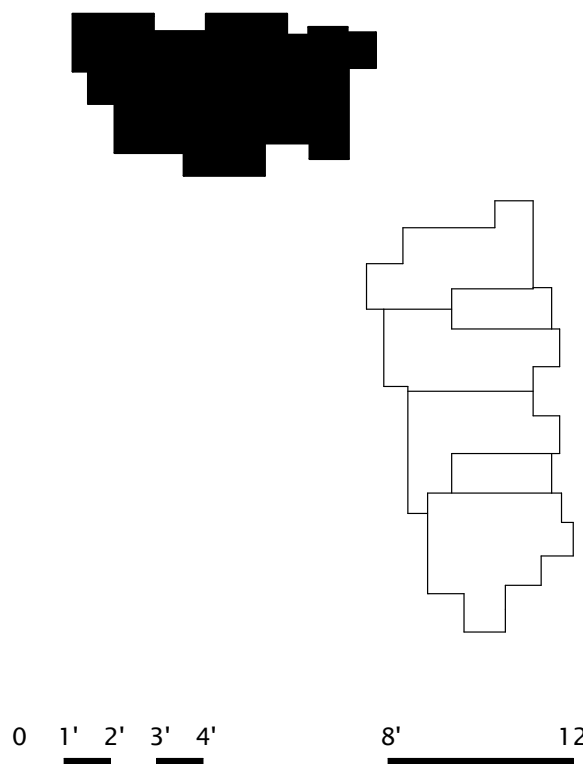
1.  
2.  
3.  
4.  
5.  
6.  
7.  
8.  
9.  
10.

1.  
2.  
3.  
4.  
5.  
6.  
7.  
8.  
9.  
10.

1.  
2.  
3.  
4.  
5.  
6.  
7.  
8.  
9.  
10.



1 RCP - TOWER A/B - UNIT I  
SCALE: 1/4" = 1'-0"



RCP - TOWER AB - UNIT I

A6.2.I