

- 159 South Jackson St, Suite 600  
Seattle, Washington 98104 USA  
+1 206 624 5670 [disorkundig.com](mailto:disorkundig.com)

# Olson Kundig

**SOMMET BLANC**  
9300 MARSAC AVE  
PARK CITY, UT 84060



Pool Consultant  
**Cloward H2O**  
2896 N University Ave, Suite 290  
Provo, UT 84604

**Landscape Architect**  
**EPG Design**  
6949 South High Tech Drive, Suite 100  
Midvale, Utah 84047

**Specifications Writer**  
**Friday Group**  
88 Mainelli Road  
Middletown, CT

**Code Consultant**  
**Holmes**  
600 1st Avenue, Suite 200A  
New York, NY 10022-4209  
Tel: 212 512-2000  
Fax: 212 512-2001  
E-mail: [info@hcnyc.com](mailto:info@hcnyc.com)

**Fire Protection Engineer**  
**Jensen Hughes**  
One Research Drive, Suite 100

Vertical Transportation Consultant  
**Lorch Bates**  
19515 North Creek Parkway, Suite 304

Structural Engineer  
**Magnusson Klemencic Associates**  
1301 5th Ave, Suite 3200

Lighting Designer  
O-  
1319 SE MILK Blvd, Suite 210

**Building Envelope Consultants**  
**RDH**  
2101 N 34th St

**Accessibility Consultant**  
**Studio Pacifica**  
2144 Westlake Ave N, Suite F

**MEP Engineer**  
**WSP USA**  
1001 Fourth Ave., Suite 310

principal architect TK, KM  
project manager TM, JB, SL, MD  
016 00 10 00 51

checked by JB  
job no. 20062

revisions:

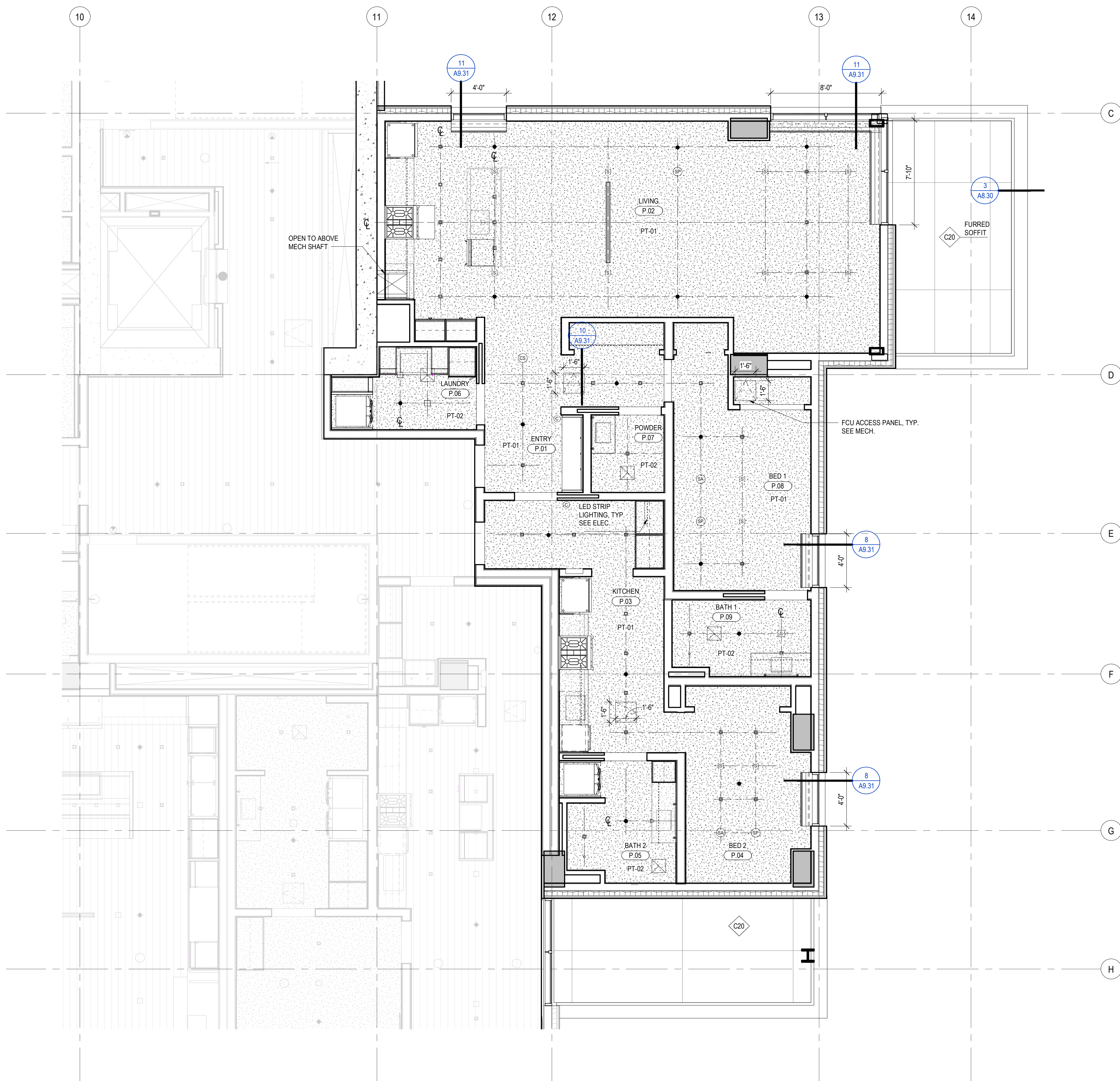
[illegible]

no.	date	by
-----	------	----

IFC SET 3 OF 3  
05/31/2024

RCP - TOWER AB - UNIT  
P

A6.2.P



2 RCP - TOWER A/B - UNIT P  
SCALE: 1/4" = 1'-0"

