

100 South Jackson St. Suite 600  
Seattle, Washington 98101 USA  
+1 206 834 6570 olsonkundig.com

Olson Kundig

SOMMET BLANC  
5900 PARSAC AVE  
PARK CITY, UT 84098



Aspen Group USA, LLC  
PO Box 980022  
Park City, Utah 84098

Pool Consultant  
Cloward H2O  
2090 N University Ave, Suite 290  
Provo, UT 84604

Landscape Architect  
EPG Design  
6940 South High Tech Drive, Suite 100  
Midvale, Utah 84047

Specifications Writer  
Friday Group  
88 Mainelli Road  
Middlebury, VT

Code Consultant  
Holmes  
800 1st Avenue, Suite 200A  
Seattle, WA 98104

Fire Protection Engineer  
Jensen Hughes  
One Research Drive, Suite 305C  
Westborough, MA 01581

Vertical Transportation Consultant  
Lerch Bates  
19515 North Creek Parkway, Suite 304  
Bellevue, WA 98011

Structural Engineer  
Magnusson Klemencic Associates  
1301 6th Ave, Suite 3200  
Seattle, WA 98101

Lighting Designer  
Q  
1319 SE MLK Blvd, Suite 210  
Portland, Oregon 97219

Building Envelope Consultant  
RDH  
2101 N 34th St  
Seattle, WA 98103

Accessibility Consultant  
Studio Pacifica  
2144 Westlake Ave N, Suite F  
Seattle, WA 98109

MEP Engineer  
WSP USA  
1501 Fourth Ave., Suite 3100  
Seattle, WA 98154

principal architect... TK, KM  
project manager... TM, JB, SL, MD  
drawn by... SK, SS, JR, CP, EA  
"JT", BD

checked by... JB  
job no. 20562  
date 05/17/2024

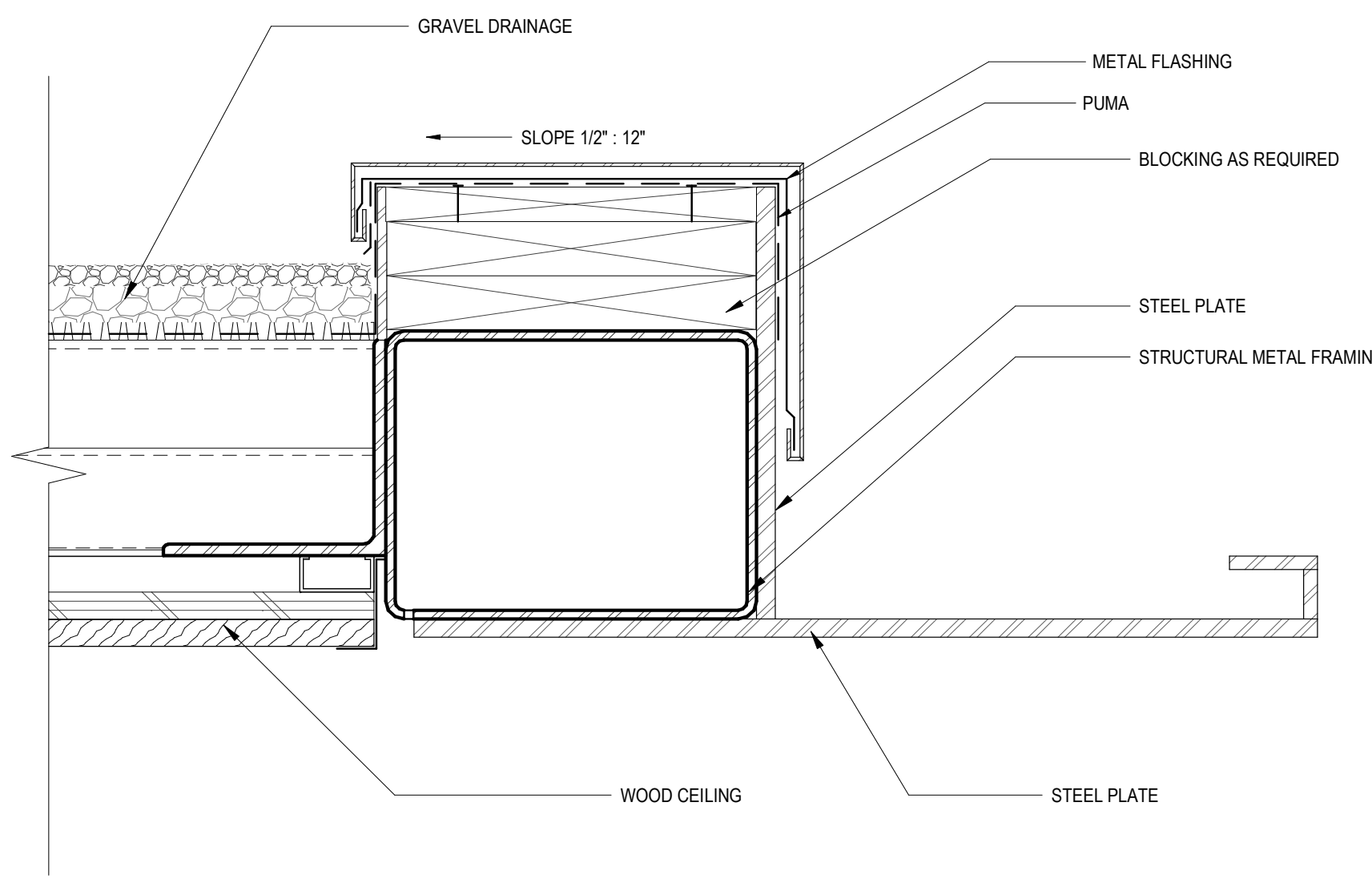
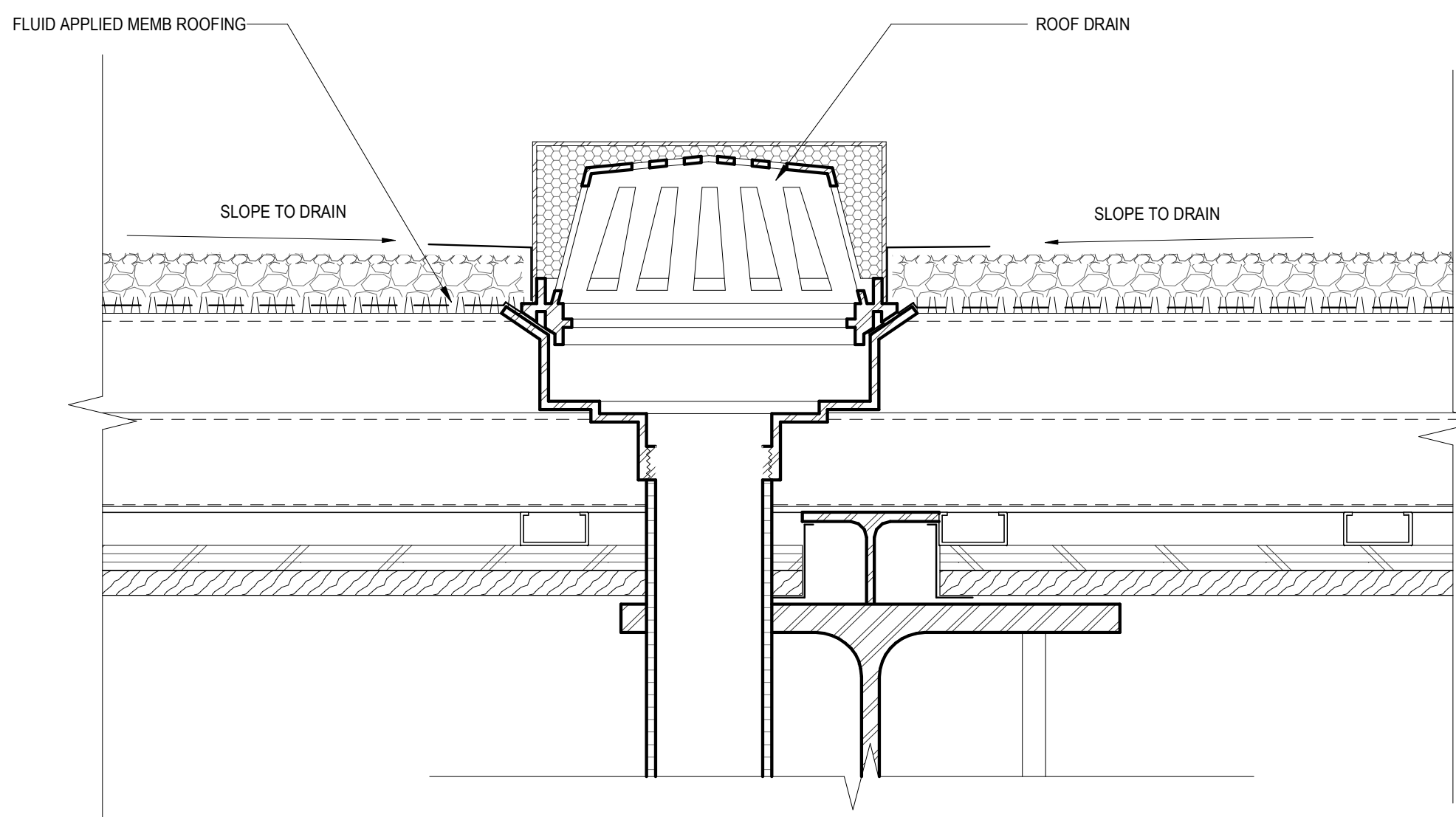
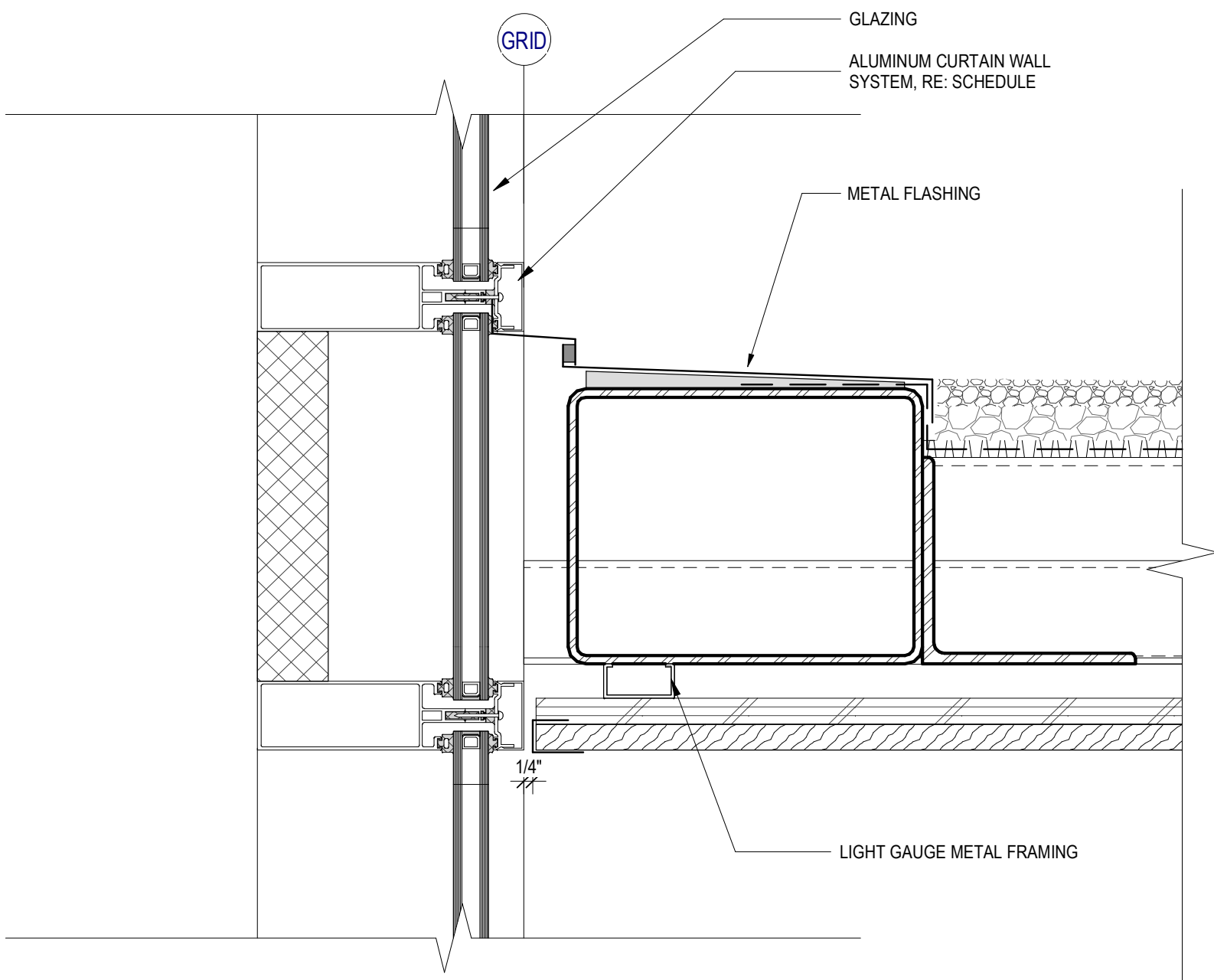
revisions:


no. date by

IFC SET 2 OF 3  
05/17/2024

EXTERIOR DETAILS -  
ROOF & CANOPIES  
DETAILS

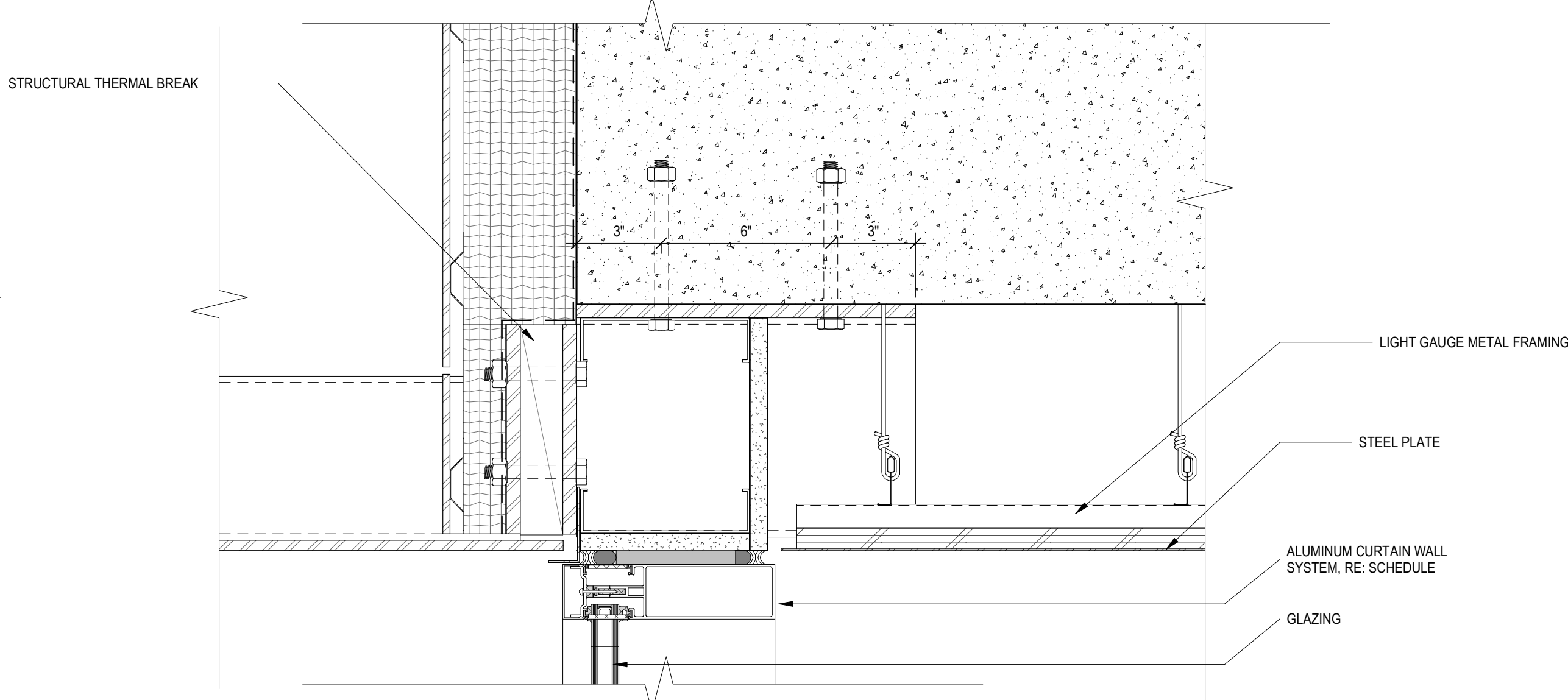
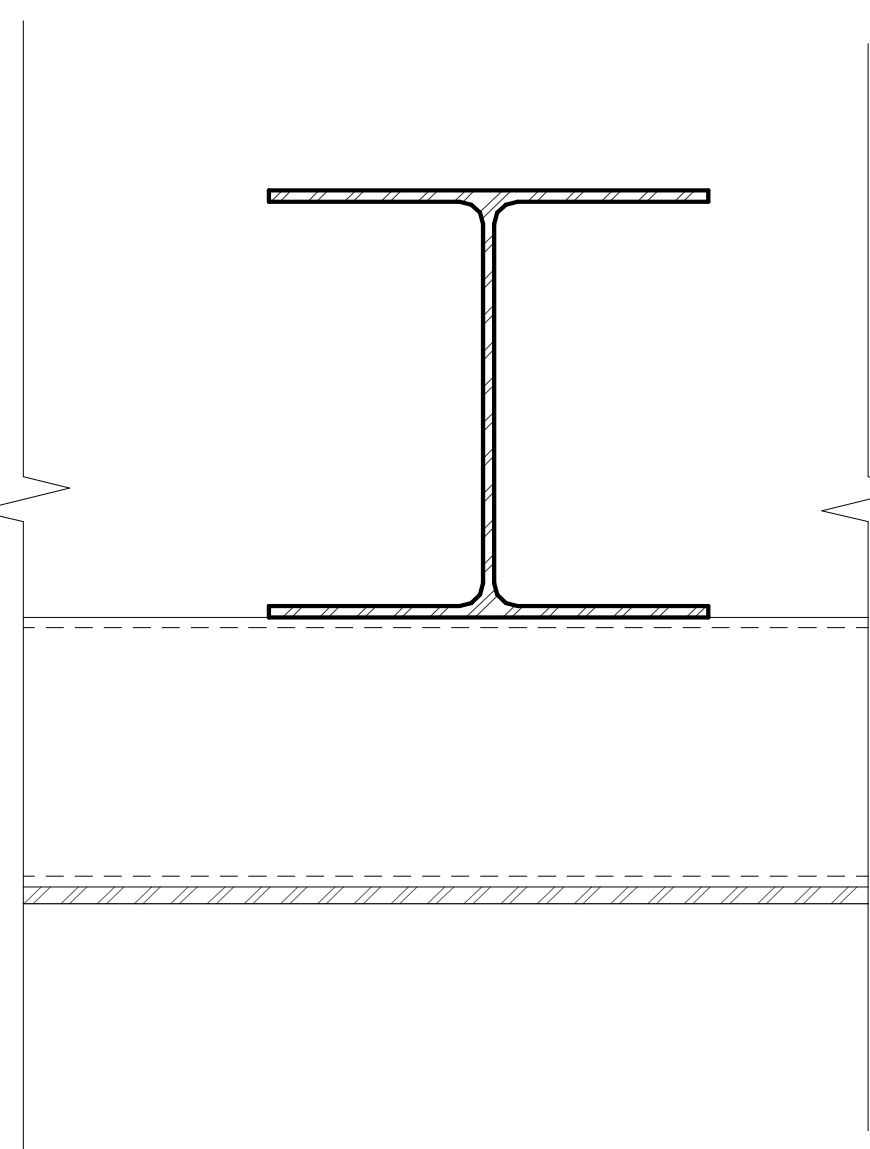
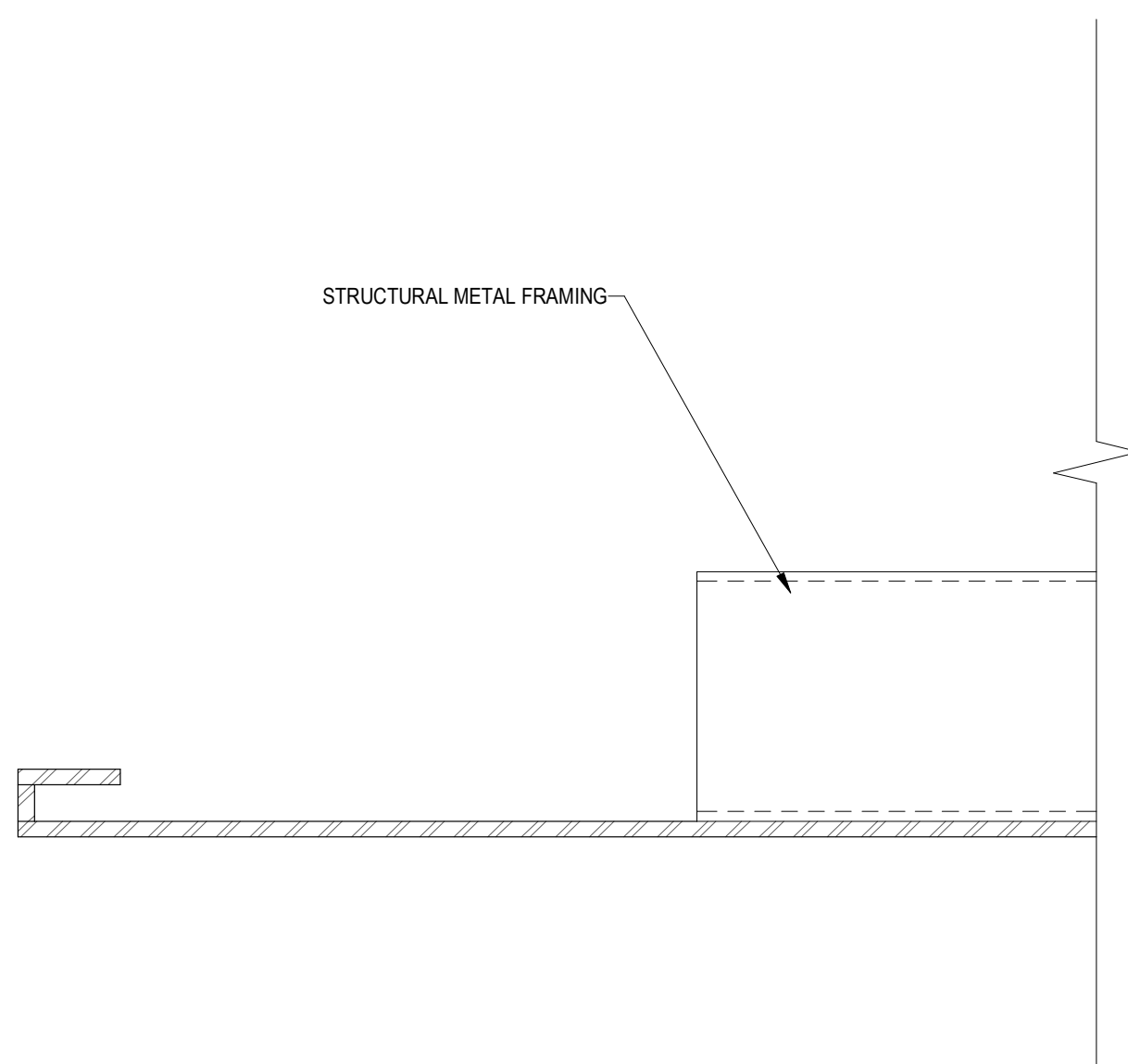
A8.93



2

DETAIL - SECTION AT RESTAURANT CANOPY

SCALE: 3" = 1'-0"



1

DETAIL - SECTION AT ENTRANCE CANOPY

SCALE: 3" = 1'-0"