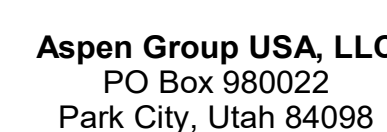


159 South Jackson St, Suite 600  
Seattle, Washington 98104 USA  
+1 206 624 5670 [obsorkundig.com](http://obsorkundig.com)

Olson Kundig

project: **SOMMET BLANC**  
3300 Marsac Ave (B2 East Parcel)



**Pool Consultant**  
**Cloward H2O**  
2696 N University Ave, Suite 290  
Provo, UT 84604

**Landscape Architect**  
**EPG Design**  
6949 South High Tech Drive, Suite 100  
Midvale, Utah 84047

**Specifications Writer**  
**Friday Group**  
88 Mainelli Road  
Middlebury, VT

**Code Consultant**  
**Holmes**  
600 1st Avenue, Suite 200A  
Seattle, WA 98104

Fire Protection Engineer  
**Jensen Hughes**  
One Research Drive, Suite 305C  
Westborough, MA 01581

**Vertical Transportation Consultant**  
**Lorch Bates**  
19515 North Creek Parkway, Suite 304  
Bothell, WA 98011

**Structural Engineer**  
**Magnusson Klemencic Associates**  
1301 5th Ave, Suite 3200  
Seattle, WA 98101

**Lighting Designer**  
**O-**  
1319 SE MLK Blvd, Suite 210  
Portland, Oregon 97219

**Building Envelope Consultant**  
**RDH**  
2101 N 34th St  
Seattle, WA 98103

**Accessibility Consultant**  
**Studio Pacifica**  
2144 Westlake Ave N, Suite F  
Seattle, WA 98109

**MEP Engineer**  
**WSP USA**  
1001 Fourth Ave., Suite 3100  
Seattle, WA 98154

principal architect \_\_\_\_\_  
project manager \_\_\_\_\_  
drawn by \_\_\_\_\_  
checked by Checker  
job no. \_\_\_\_\_  
date 5/17/2024

revisions:

---

---

---

---

---

---

---

---

---

---

---

no.	date	by
-----	------	----

IFC Set 2 of 3  
5/17/2024

TOWER A - LVL 1  
ELECTRICAL POWER  
PLAN

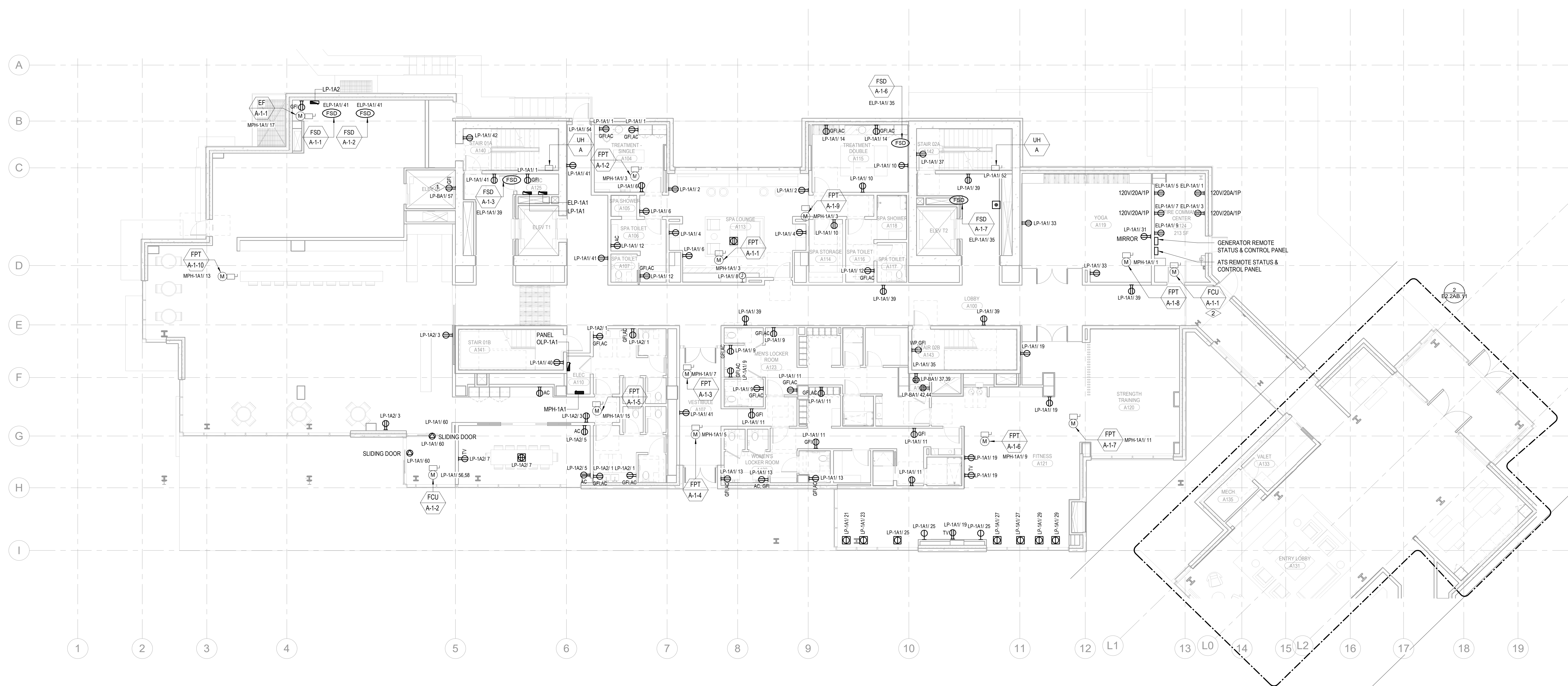
E2.2A.11

**SHEET NOTES:**

- A. DRAWINGS ARE INTENDED TO SHOW GENERAL APPROPRIATE DESIGN AND EXACT WORK AND ARE DIAGRAMMATIC. DRAWINGS ARE NOT INTENDED TO SHOW LOCATION OF LOCATIONS EXCEPT WHERE DIMENSIONS ARE SHOWN. ELECTRICAL WORK IS SHOWN ON THE DRAWING AS A GUIDELINE TO THE LOCATION OF THE WORK. THE CONTRACTOR IS TO DO THE WORK. VERIFY MEASUREMENTS PERTAINING THEREIN AND ASSUME RESPONSIBILITY THEREFOR ANY SUBSTANTIAL DIFFERENCES BETWEEN DRAWINGS AND CONDITIONS IN THE FIELD ARE TO BE SUBMITTED TO THE PROJECT LOCATION MANAGER FOR CONSIDERATION BEFORE PROCEEDING WITH WORK.
- B. ELECTRICAL WORKER PROVIDES LABOR, MATERIALS AND EQUIPMENT REQUIRED TO INSTALL THE ELECTRICAL WORK. THE CONTRACTOR SHALL BE RESPONSIBLE TO OBTAIN THE NECESSARY PERMITS AND TO OBTAIN THE NECESSARY ELECTRICAL CONNECTION SCHEDULE FOR CONTROL, WIRING, COORDINATE DISCONNECT REQUIREMENTS.
- C. ELECTRICAL WORKER PROVIDES POWER REQUIREMENTS FOR EQUIPMENT PROVIDED BY OTHERS.
- D. ELIMINATE CONDUITS AND FINISHED SPACES SHALL BE CONCEALED. COORDINATE WITH OTHER TRADES AND USE CHASES AND CEILING SPACES FOR LOCATIONS OF ELECTRICAL JUNCTION BOXES IN FINISHED SPACES SHALL BE APPROVED BY ARCHITECT PRIOR TO PROCEEDING WITH WORK.
- E. REFER TO MECHANICAL AND PLUMBING PLANS FOR EXACT LOCATION OF HVAC/PLUMBING EQUIPMENT.
- F. PROVIDE CONDUIT, WIRE AND J-BOXES FOR ROUTING SHOW QUANTITY AND SIZES OF J-BOXES TO BE DETERMINED BY CONTRACTOR.
- G. CONTRACTOR SHALL BE RESPONSIBLE FOR REPAIR OF ANY ELECTRICAL CIRCUITS DAMAGED BY THE CONSTRUCTION. SUCH REPAIRS WILL BE REPAIRED IMMEDIATELY. THERE WILL BE NO DISRUPTION OF SERVICE OUTSIDE OF CONSTRUCTION ZONE AREA.
- H. PROVIDE TAMPON PROOF RECEPTACLES IN RESIDENTIAL UNITS AND ALL COMMON AREAS.

**NUMBERED NOTES:**

- 1 DUPLEX RECEPTACLE TO BE INSTALLED AT THE TOP OF THE ELEVATOR SHAFT. COORDINATE EXACT LOCATION WITH ELEVATOR CONTRACTOR PRIOR TO ROUGH-IN.
- 2 FAN COIL INDOOR UNIT DENOTED IS PART OF A SPLIT SYSTEM AND IS TO BE POWERED BY THE OUTDOOR UNIT. ELECTRICAL CONTRACTOR IS TO SUPPLY AND INSTALL THE WIRING AND CONDUITS BETWEEN THE OUTDOOR UNIT AND THE INDOOR UNIT AS PART OF THIS SCOPE OF WORK. REFER TO THE EQUIPMENT CONNECTION SCHEDULE FOR ADDITIONAL REQUIREMENT.



1 TOWER A - LEVEL 1 ELECTRICAL POWER  
SCALE: 1/8" = 1'-0"

