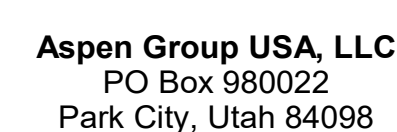


159 South Jackson St, Suite 600  
Seattle, Washington 98104 USA  
+1 206 624 5670 [oleonkundig.com](http://oleonkundig.com)

Olson Kundig

project:  
**SOMMET BLANC**  
33300 Marsac Ave (B2 East Parcel)  
Bordeaux, France 33100



**Pool Consultant**  
**Cloward H2O**  
2696 N University Ave, Suite 290  
Provo, UT 84604

**Landscape Architect**  
**EPG Design**  
6949 South High Tech Drive, Suite 100  
Midvale, Utah 84047

**Friday Group**  
88 Mainelli Road  
Middlebury, VT

**Code Consultant**  
**Holmes**  
600 1st Avenue, Suite 200A  
Seattle WA 98104

Fire Protection Engineer  
**Jensen Hughes**  
One Research Drive, Suite 305C  
Westborough, MA 01581

**Vertical Transportation Consultant**  
**Lerch Bates**  
19515 North Creek Parkway, Suite 304  
Bothell, WA 98011

Structural Engineer  
**Magnusson Klemencic Associates**  
1301 5th Ave, Suite 3200  
Seattle, WA 98101

**Lighting Designer**  
O-  
1319 SE MLK Blvd, Suite 210  
Portland, Oregon 97219

**Building Envelope Consultant**  
**RDH**  
2101 N 34th St  
Seattle, WA 98103

Accessibility Consultant  
**Studio Pacifica**  
2144 Westlake Ave N, Suite F  
Seattle, WA 98109

**MEP Engineer**  
**WSP USA**  
1001 Fourth Ave., Suite 3100  
Seattle, WA 98154

principal architect \_\_\_\_\_  
project manager \_\_\_\_\_  
drawn by \_\_\_\_\_  
checked by Checker  
job no. \_\_\_\_\_  
date 5/17/2024

revisions:

no.	date	by
-----	------	----

IFC Set 2 of 3  
5/17/2024

TOWER A - LVL 2  
ELECTRICAL POWER  
PLAN

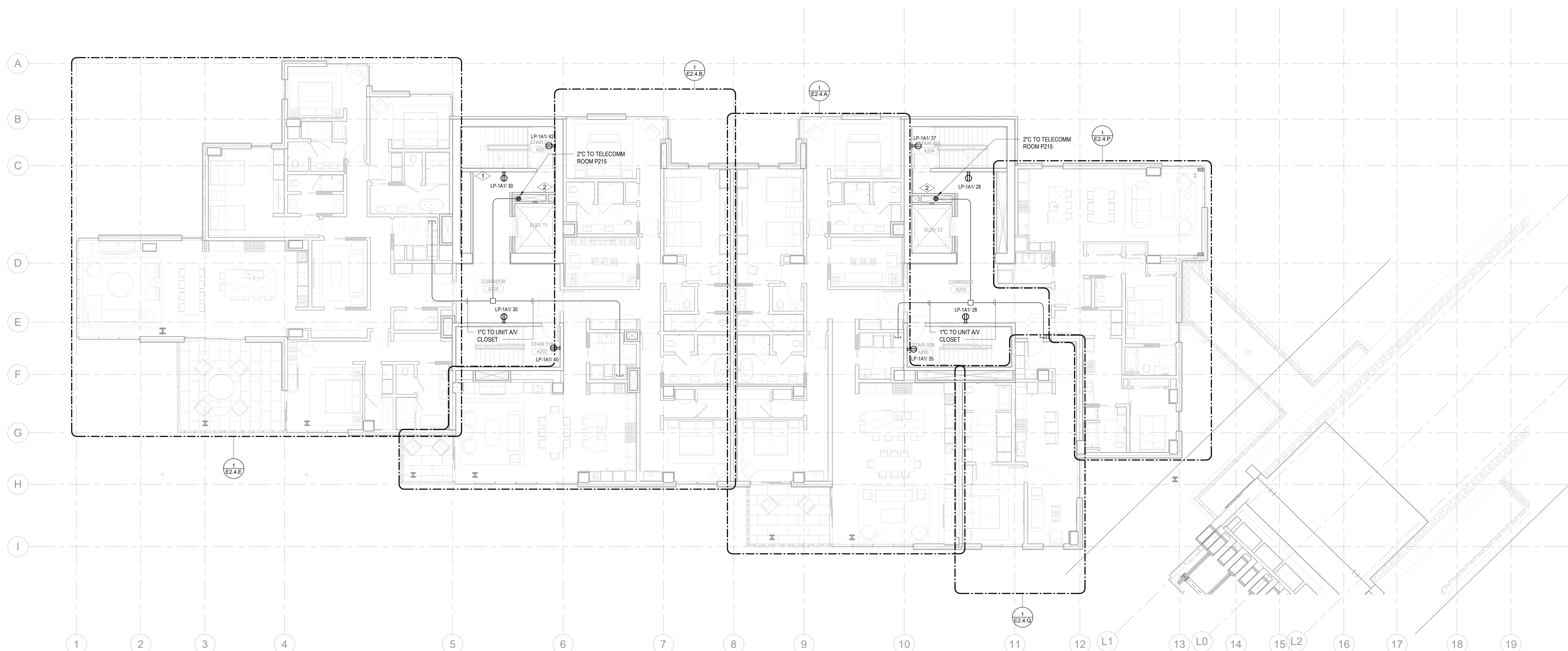
E2.2A.12

**SHEET NOTES:**

- DRAWINGS ARE INTENDED TO SHOW GENERAL ARRANGEMENT, DESIGN, AND EXTENT OF WORK AND ARE DIAGRAMATIC. DRAWINGS ARE NOT INTENDED TO SHOW EXACT LOCATIONS EXCEPT WHERE DIMENSIONS ARE SHOWN. ELECTRICAL WORK IS SHOWN ON AN UNFINISHED BASIS. CONTRACTOR SHALL BE RESPONSIBLE FOR VERIFYING ALL DIMENSIONS AND LOCATIONS. VERIFY MEASUREMENTS PERTAINING THERE TO AND ASSUME RESPONSIBILITY THEREFOR. ANY SUBSTANTIAL DIFFERENCES BETWEEN DRAWINGS AND CONDITIONS SHALL BE SUBMITTED TO THE ARCHITECT FOR REVIEW AND APPROVAL PRIOR TO PROCEEDING WITH WORK.
- WORK PERFORMED INCLUDES CONDUIT, RACEWAYS, MATERIALS, AND EQUIPMENT REQUIRED TO INSTALL WORK SHOWN ON DRAWINGS. SYSTEM AS INDICATED ON THESE DRAWINGS AND AS SPECIFIED REFER TO ELECTRICAL CONNECTION SCHEDULE FOR CONDUIT, PIPING, COPD, DEVICES, AND COMPONENTS.
- VERIFY EQUIPMENT SIZES AND POWER REQUIREMENTS FOR EQUIPMENT PROVIDED BY OTHERS.
- E. ELIGIBLE CONDITIONS IN FINISHED SPACES SHALL BE CONCEALED. COORDINATE WITH OTHER TRADES AND USE CHASES AND CEILING SPACES/LOCATIONS OF ELECTRICAL JUNCTION BOXES IN FINISHED SPACES SHALL BE APPROVED BY ARCHITECT PRIOR TO PROCEEDING WITH WORK.
- F. REFER TO MECHANICAL AND PLUMBING PLANS FOR EXACT LOCATION OF HVAC/PLUMBING EQUIPMENT.
- G. PROVIDE CONDUIT, WIRE AND J-BOXES FOR ROUTING SHOW. QUANTITY AND SIZES OF J-BOXES TO BE DETERMINED BY CONTRACTOR.
- CONTRACTOR SHALL BE RESPONSIBLE FOR REPAIR OF ANY ELECTRICAL CIRCUITS DAMAGED BY THE CONSTRUCTION. CONTRACTOR SHALL BE REPAIRED IMMEDIATELY. THERE SHALL BE NO DISRUPTION OF SERVICE OUTSIDE OF CONSTRUCTION ZONE AREA.
- I. PROVIDE TAMPON PROOF RECEPTACLES IN RESIDENTIAL UNITS AND ALL COMMON AREAS

**NUMBERED NOTES:**

- 1 BRANCH CIRCUITS IN EACH DWELLING UNIT SHALL SUPPLY ONLY LOADS WITHIN THAT DWELLING UNIT OR LOADS  
ASSOCIATED ONLY WITH THAT DWELLING UNIT.
- 2 FEEDERS TO A DWELLING UNIT SHALL NOT ENTER AND BE ROUTED THOUGH ANOTHER DWELLING UNIT. ELECTRICAL  
CONTRACTOR TO UTILIZE THE ELECTRICAL SHAFTS LOCATED ON THE EAST CORE AND WEST CORE TO ROUTE FEEDERS  
TO THE DWELLING UNITS.



1 TOWER A - LEVEL 2 ELECTRICAL POWER  
SCALE: 1/8" = 1'-0"

