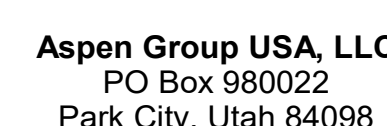


159 South Jackson St, Suite 600
Seattle, Washington 98104 USA
1 206 624 5670 obsorkundig.com

Olson Kundig

project:
SOMMET BLANC
33300 Marsac Ave (B2 East Parcel)
Bordeaux, France 33100



Pool Consultant
Cloward H2O
2696 N University Ave, Suite 290
Provo, UT 84604

Landscape Architect
EPG Design
6949 South High Tech Drive, Suite 100
Midvale, Utah 84047

Specifications Writer
Friday Group
88 Mainelli Road
Middletown, NJ

Code Consultant
Holmes
600 1st Avenue, Suite 200
Seattle, WA 98104

Fire Protection Engineer
Jensen Hughes
One Research Drive, Suite 305C
Westborough, MA 01581

Vertical Transportation Consultant
Lerch Bates
19515 North Creek Parkway, Suite 300
Bothell, WA 98011

Structural Engineer
Magnusson Klemencic Associates
1301 5th Ave, Suite 3200
Seattle, WA 98101

Lighting Designer
O-
1319 SE MLK Blvd, Suite 210
Portland, Oregon 97219

Building Envelope Consultants
RDH
2101 N 34th St
Seattle, WA 98103

Accessibility Consultant
Studio Pacifica
2144 Westlake Ave N, Suite F
Seattle, WA 98109

MEP Engineer
WSP USA
1001 Fourth Ave., Suite 3100
Seattle, WA 98154

principal architect _____
project manager _____
drawn by _____
checked by Checker
job no. _____
date 5/17/2024

revisions:

no.	date	by
-----	------	----

IFC Set 2 of 3
5/17/2024

TOWER A - LVL 5
ELECTRICAL POWER
PLAN

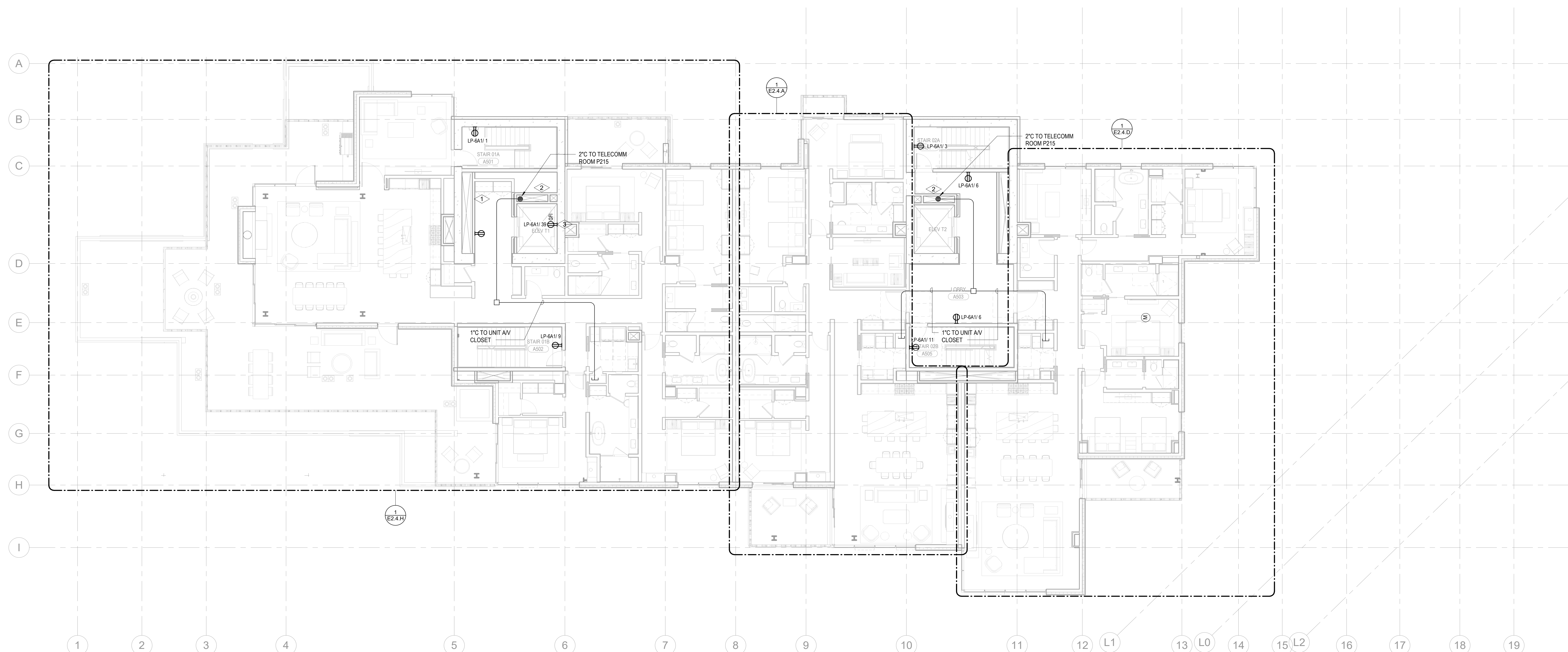
E2.2A.15

SHEET NOTES:

- DRAWINGS ARE INTENDED TO SHOW GENERAL ARRANGEMENT, DESIGN, AND EXTENT OF WORK AND ARE DIAGRAMATIC. DRAWINGS ARE NOT INTENDED TO SHOW EXACT LOCATIONS EXCEPT WHERE DIMENSIONS ARE SHOWN. ELECTRICAL WORK IS SHOWN ON A STANDARD ILLUSTRATED SYMBOL BASIS. CONTRACTOR SHALL BE RESPONSIBLE FOR ALL WORK. VERIFY MEASUREMENTS PERTAINING THERE TO AND ASSUME RESPONSIBILITY THEREFOR. ANY SUBSTANTIAL DIFFERENCES BETWEEN DRAWINGS AND CONDITIONS SHALL BE SUBMITTED TO THE ARCHITECT FOR REVIEW AND APPROVAL PRIOR TO PROCEEDING WITH WORK.
- B. WORK PERFORMED INCLUDES CONDUIT, RACEWAYS, MATERIALS, AND EQUIPMENT REQUIRED TO INSTALL ELECTRICAL SYSTEM AS INDICATED ON THESE DRAWINGS AND AS SPECIFIED REPAIR TO ELECTRICAL CONDUIT SCHEDULE FOR CONDUIT, PIPING, COPD, AND/OR CONCRETE.
- C. VERIFY EQUIPMENT SIZES AND POWER REQUIREMENTS FOR EQUIPMENT PROVIDED BY OTHERS.
- D. ELUCIDATE CONDITIONS IN FINISHED SPACES SHALL BE CONCEALED. COORDINATE WITH OTHER TRADES AND USE CHASES AND CEILING SPACES/LOCATIONS OF ELECTRICAL JUNCTION BOXES IN FINISHED SPACES SHALL BE APPROVED BY ARCHITECT PRIOR TO PROCEEDING WITH WORK.
- F. REPAIR TO MECHANICAL AND PLUMBING PLANS FOR EXACT LOCATION OF HVAC/PLUMBING EQUIPMENT.
- G. PROVIDE CONDUIT, WIRE AND J-BOXES FOR ROUTING SHOW QUANTITY AND SIZES OF J-BOXES TO BE DETERMINED BY CONTRACTOR.
- H. CONTRACTOR SHALL BE RESPONSIBLE FOR REPAIR OF ANY ELECTRICAL CIRCUITS AFFECTED BY THE CONSTRUCTION. SUCH REPAIRS WILL BE REPAIRED IMMEDIATELY. THERE WILL BE NO DISRUPTION OF SERVICE OUTSIDE OF CONSTRUCTION ZONE AREA.
- I. PROVIDE TAMPON PROOF RECEPITALS IN RESIDENTIAL UNITS AND ALL COMMON AREAS

NUMBERED NOTES:

- 1 BRANCH CIRCUITS IN EACH DWELLING UNIT SHALL SUPPLY ONLY LOADS WITHIN THAT DWELLING UNIT OR LOADS ASSOCIATED ONLY WITH THAT DWELLING UNIT.
- 2 FEEDERS TO A DWELLING UNIT SHALL NOT ENTER AND BE ROUTED THOUGH ANOTHER DWELLING UNIT. ELECTRICAL CONTRACTOR TO UTILIZE THE ELECTRICAL SHAFTS LOCATED ON THE EAST CORE AND WEST CORE TO ROUTE FEEDERS TO THE DWELLING UNITS.
- 3 DUPLEX RECEPTACLE TO BE INSTALLED AT THE TOP OF THE ELEVATOR SHAFT. COORDINATE EXACT LOCATION WITH ELEVATOR CONTRACTOR PRIOR TO ROUGH-IN.



1 TOWER A - LEVEL 5 ELECTRICAL POWER
SCALE: 1/8" = 1'-0"

