

Reserved for permit stamp

100 South Jackson St., Suite 800  
Seattle, Washington 98104 USA  
+1 206 454 5970 olsonkundig.com

Olson Kundig

project  
SOMMET BLANC  
9900 Marzuc Ave (B2 East Parcel)  
Park City, Utah 84060



Aspen Group USA, LLC  
PO Box 980022  
Park City, Utah 84098

Pool Consultant  
Cloward H2O  
2098 N University Ave, Suite 290  
Provo, UT 84604

Landscaping Architect  
EPG Design  
6949 South High Tech Drive, Suite 100  
Midvale, Utah 84047

Specifications Writer  
Friday Group  
88 Marrett Road  
Medfordbury VT

Code Consultant  
Holmes  
600 1st Avenue, Suite 200A  
Seattle, WA 98104

Fire Protection Engineer  
Jensen Hughes  
One Research Drive, Suite 305C  
Westborough, MA 01581

Vertical Transportation Consultant  
Lerch Bates  
19515 North Creek Parkway, Suite 304  
Bellevue, WA 98011

Structural Engineer  
Magnusson Klemencic Associates  
1301 5th Ave, Suite 3200  
Seattle, WA 98101

Lighting Designer  
O  
1319 SE MLK Blvd, Suite 210  
Portland, Oregon 97219

Building Envelope Consultant  
RDH  
2101 N 34th St  
Seattle, WA 98103

Accessibility Consultant  
Studio Pacifica  
2144 Westlake Ave N, Suite F  
Seattle, WA 98109

MEP Engineer  
WSP USA  
1001 Fourth Ave., Suite 3100  
Seattle, WA 98154

principal architect \_\_\_\_\_  
project manager \_\_\_\_\_  
drawn by \_\_\_\_\_  
checked by \_\_\_\_\_  
job no. \_\_\_\_\_  
date 5/31/2024

revisions:  
\_\_\_\_\_  
\_\_\_\_\_  
\_\_\_\_\_  
\_\_\_\_\_  
\_\_\_\_\_  
\_\_\_\_\_  
\_\_\_\_\_  
\_\_\_\_\_  
\_\_\_\_\_  
\_\_\_\_\_  
2 5/31/2024 EC-3

no. date by

IFC Set 3 of 3  
5/31/2024

TOWER B - ROOF  
ELECTRICAL POWER  
PLAN

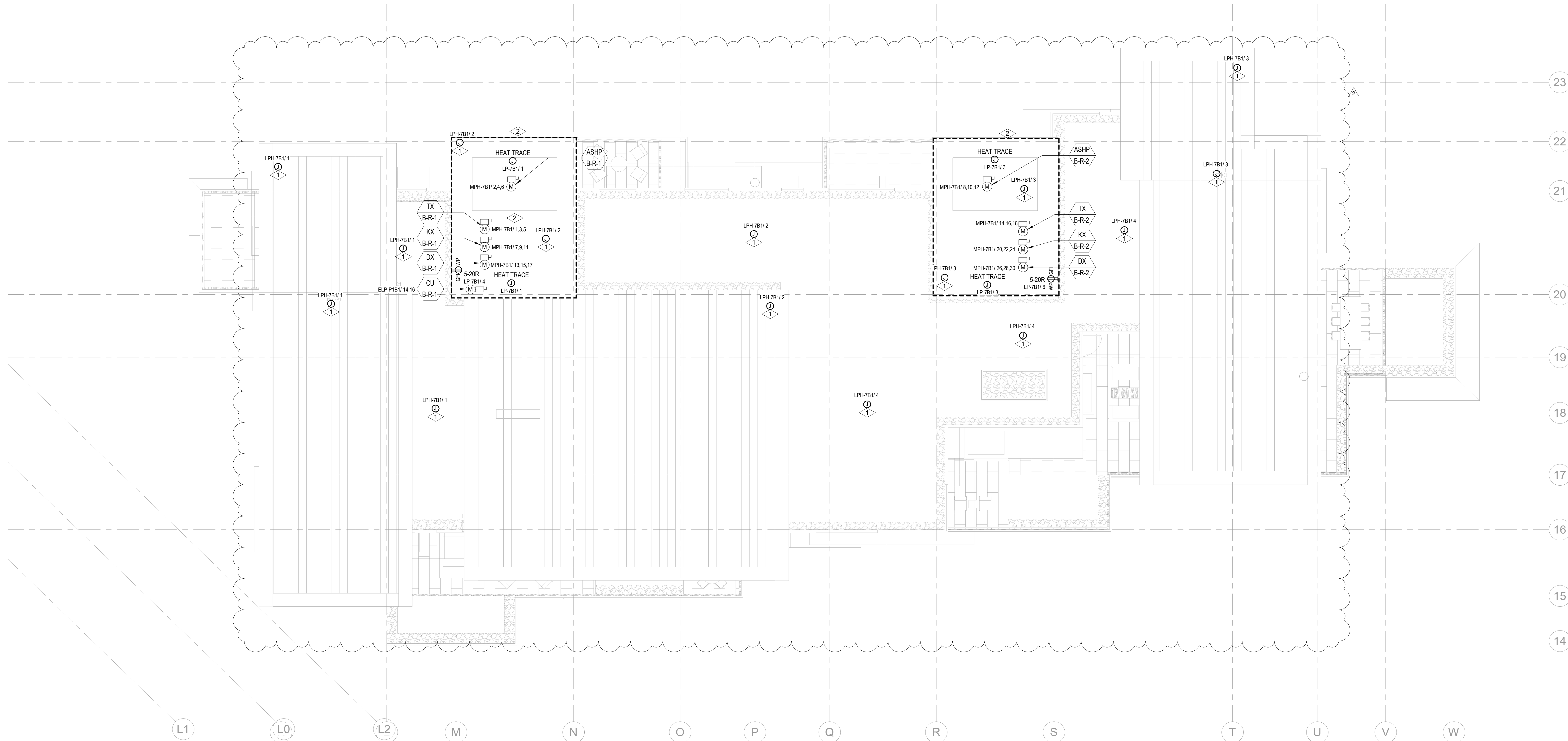
E2.2B.R

#### SHEET NOTES:

- DRAWINGS ARE INTENDED TO SHOW GENERAL ARRANGEMENT, DESIGN, AND EXTENT OF WORK AND ARE DIAGRAMMATIC. DRAWINGS ARE NOT INTENDED TO SHOW EXACT LOCATIONS EXCEPT WHERE DIMENSIONS ARE SHOWN. ELECTRICAL WORK IS SHOWN ON PLANS USING STANDARD INDUSTRY SYMBOLS. BEFORE ORDERING MATERIALS OR DOING WORK, VERIFY MEASUREMENTS PERTAINING THERETO AND ASSUME RESPONSIBILITY THEREFOR. ANY SUBSTANTIAL DIFFERENCES BETWEEN DRAWINGS AND CONDITIONS IN THE FIELD SHALL BE SUBMITTED TO THE CONSTRUCTION MANAGER FOR CONSIDERATION BEFORE PROCEEDING WITH WORK.
- WORK PERFORMED INCLUDES: LABOR, MATERIALS, AND EQUIPMENT REQUIRED TO INSTALL A COMPLETE ELECTRICAL SYSTEM AS INDICATED ON THESE DRAWINGS AND AS SPECIFIED.
- REFER TO ELECTRICAL CONNECTION SCHEDULE FOR CONDUIT, WIRING, COPD, DISCONNECT REQUIREMENTS.
- VERIFY EQUIPMENT SIZES AND POWER REQUIREMENTS FOR EQUIPMENT PROVIDED BY OTHERS.
- ELECTRICAL CONDUITS IN FINISHED SPACES SHALL BE CONCEALED. COORDINATE WITH OTHER TRADES AND USE CHASES AND CEILING SPACES. LOCATIONS OF ELECTRICAL JUNCTION BOXES IN FINISHED SPACES SHALL BE APPROVED BY ARCHITECT PRIOR TO ROUGH-IN.
- REFER TO MECHANICAL AND PLUMBING PLANS FOR EXACT LOCATION OF HVAC/PLUMBING EQUIPMENT.
- PROVIDE CONDUIT, WIRE AND J-BOXES FOR CIRCUITING SHOWN. QUANTITY AND SIZES OF J-BOXES TO BE DETERMINED BY CONTRACTOR.
- CONTRACTOR SHALL BE RESPONSIBLE FOR REPAIR OF ANY ELECTRICAL CIRCUITS AFFECTED BY CONSTRUCTION. SUCH CIRCUITS WILL BE REPAIRED IMMEDIATELY. THERE WILL BE NO DISRUPTION OF SERVICE OUTSIDE OF CONSTRUCTION ZONE AREA.
- PROVIDE TAMPER PROOF RECEPTACLES IN RESIDENTIAL UNITS AND ALL COMMON AREAS AS PER NEC 408.12.

#### NUMBERED NOTES:

- PLACEHOLDER FOR SNOWMELT HEAT TAPE AT EAVES AND GUTTERS. PROVIDE GFEP 30mA TRIP CIRCUIT PROTECTION PER NEC.
- HEAT TRACE IS TO BE SUPPLIED AND INSTALLED FOR ALL HYDRONIC PIPING IN THE AREA NOTED. REFER TO MECHANICAL DRAWINGS FOR QUANTITY AND EXACT LOCATION OF HYDRONIC PIPING. HEAT TRACE CIRCUITS SHALL BE FED FROM A GFEP-TYPE BREAKER.



1 TOWER B - ROOF ELECTRICAL POWER  
SCALE: 1/8" = 1'-0"

