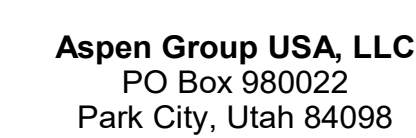


159 South Jackson St, Suite 600
Seattle, Washington 98104 USA

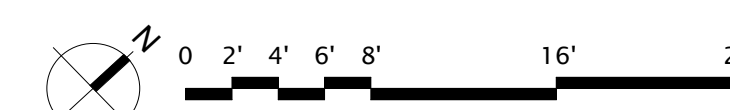
project:
SOMMET BLANC



principal architect _____
project manager _____
drawn by _____
checked by Checker
job no. _____
date 05/31/2024

no	date	h
----	------	---

E2.2C.01



A DRAWINGS ARE INTENDED TO SHOW GENERAL ARRANGEMENT, DESIGN, AND EXTENT OF WORK AND ARE DIAGRAMMATIC. DRAWINGS ARE NOT INTENDED TO SHOW EXACT LOCATIONS EXCEPT WHERE DIMENSIONS ARE SHOWN. ELECTRICAL WORK IS SHOWN ON STANDARD ELECTRICAL SYMBOLS AND CONVENTIONS. CONTRACTOR SHALL BE DOING WORK. VERIFY MEASUREMENTS PERTAINING THERE TO AND ASSUME RESPONSIBILITY. IF ANY SUBSTANTIAL DIFFERENCES BETWEEN DRAWINGS AND CONDITIONS IN FIELD ARE NOT SUBMITTAL TO THE ARCHITECT FOR REVIEW AND APPROVAL BEFORE PROCEEDING WITH WORK.

B WORK PERFORMED INCLUDES LABOR, MATERIALS, AND EQUIPMENT REQUIRED TO INSTALL AND TEST ELECTRICAL SYSTEMS. CONTRACTOR SHALL INDICATE ON THESE DRAWINGS AND AS SPECIFIC REFER TO ELECTRICAL CONNECTION SCHEDULE FOR CONDUIT, WIRING, COPD, DISCREPANCY REQUIREMENT.

C VERIFY EQUIPMENT SIZES AND POWER REQUIREMENTS FOR EQUIPMENT PROVIDED BY OTHERS.

D ELECTRICAL CONNECTIONS IN FINISHED SPACES SHALL BE CONCEALED. COORDINATE WITH OTHER TRADES AND USE CHASES AND CEILING SPLICES. LOCATIONS OF ELECTRICAL JUNCTION BOXES IN FINISHED SPACES SHALL BE APPROVED BY ARCHITECT PRIOR TO ROUTING.

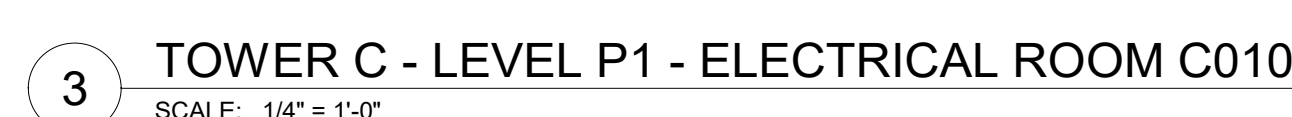
E REFER TO MECHANICAL AND PLUMBING PLANS FOR EXACT LOCATION OF HVAC/PLUMBING EQUIPMENT.

F CONTRACTOR CONDUIT, WIRE AND J-BOXES FOR CIRCUITING SHOWN. QUANTITY AND SIZES OF J-BOXES TO BE DETERMINED BY CONTRACTOR.

G CONTRACTOR SHALL BE RESPONSIBLE FOR REPAIR OF ANY ELECTRICAL CIRCUITS DAMAGED BY CONSTRUCTION WORK. REPAIR SHALL BE REPAIRED MATCHING. THERE SHALL BE NO DISRUPTION OF SERVICE OUTSIDE OF CONSTRUCTION ZONE AREA.

H PROVIDE TAMPER-PROOF RECEPTACLES IN RESIDENTIAL UNITS AND ALL COMMON AREAS AS PER CITY OF LOS ANGELES.

- 1 SUPPLY AND INSTALL SURFACE MOUNTED JUNCTION BOX WITH 2#6 + #10G WIRING IN 3/4" SURFACE MOUNTED CONDUIT FOR EV CAR CHARGER. EXTERIOR LOCATION AND MOUNTING HEIGHT ARE TO BE COORDINATED WITH EV CAR CHARGER SUPPLIER TO THE PROJECT.
- 2 DUPLEX RECEPTACLE TO BE INSTALLED IN THE ELEVATOR PIT. COORDINATE EXTERIOR LOCATION WITH ELEVATOR CONTRACTOR.
- 3 OUTDOOR MAIN SERVICE DISCONNECT TO BE INSTALLED ON EQUIPMENT PAD.
- 4 PROVIDE 6" PROTECTION IN FRONT OF EACH DUPLEX PERMITS. PROTECTION MAY BE INTEGRAL TO CIRCUIT BREAKER, OR MAY BE MODULE MOUNTED ADJACENT TO PIT RECEPTACLE.
- 5 PROTECT CONDUIT, BOXES, AND WIRING AS REQUIRED BY MANUFACTURER FOR DOOR CLOSURES.
- 6 ACCESS CARDS WILL BE INCLUDED FOR THE GARAGE DOOR AND KEYS WILL BE INCLUDED FOR THE STAIRING ROOM DOOR.
- 7 SEPARATE CONDUIT CHANNELS IN CONCRETE AT STRUCTURAL CEILING. DYE ENCASEMENT RED THROUGH-AND THROUGH AND APPLY PAINTED LABELS PER ROCKY MOUNTAIN PROJECT REQUIREMENTS. REFER TO STRUCTURAL DRAWINGS FOR INTEGRATION OF ENCASEMENT WITH REINFORCING. REFER TO ELECTRICAL CONDUIT SIZES AND QUANTITIES.
- 8 HEAT TRACE IS TO BE SUPPLIED AND INSTALLED FOR ALL HIGH-TEMPERATURE PIPING IN THE HEAT TRACE ROOM. HEAT TRACE CABLES TO BE SUPPLIED BY THE MANUFACTURER.
- 9 FAN COIL MECHANICAL UNIT DENOTES IS PART OF A SPLIT SYSTEM AND IS TO BE POWERED BY THE OUTDOOR UNIT. ELECTRICAL CONTRACTOR IS TO SUPPLY AND INSTALL THE WIRING CONNECTIONS BETWEEN THE UNIT AND THE ELECTRICAL CONTROL PANEL.
- 10 SCOPE OF WORK REFER TO THE EQUIPMENT CONNECTION SCHEDULE FOR ADDITIONAL REQUIREMENTS.
- 11 ROUTE OF SEVEN 3/4" PVC CONDUITS UNDERGROUND TO CONNECT BOTH SECTIONS OF PVC CONDUIT ENCASE ROUTING IN FLOOR.



1 TOWER C - PARKING LEVEL ELECTRICAL POWER PLAN
SCALE: 1/8" = 1'-0"