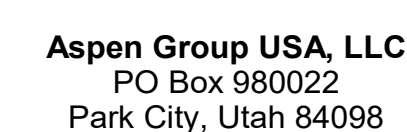


159 South Jackson St, Suite 600
Seattle, Washington 98104 USA
1 206 624 5670 obsorkundig.com

Olson Kundig

Project: **SOMMET BLANC**
13300 Marsac Ave (B2 East Parcel)
Park City, Utah 84060



Pool Consultant
Cloward H2O
2696 N University Ave, Suite 290
Provo, UT 84604

Landscape Architect
EPG Design
6949 South High Tech Drive, Suite 100
Midvale, Utah 84047

Specifications Writer
Friday Group
88 Mainelli Road
Middletown, NJ

Code Consultant

600 1st Avenue, Suite 200A
Seattle, WA 98104

Fire Protection Engineer
Jensen Hughes
One Research Drive, Suite 305C
Westborough, MA 01581

Vertical Transportation Consultant
Lorch Bates
19515 North Creek Parkway, Suite 304
Bothell, WA 98011

Structural Engineer
Magnusson Klemencic Associates
1301 5th Ave, Suite 3200
Seattle, WA 98101

Lighting Designer
O-
1319 SE MLK Blvd, Suite 210
Portland, Oregon 97219

Building Envelope Consultant
RDH
2101 N 34th St
Seattle, WA 98103

Accessibility Consultant
Studio Pacifica
2144 Westlake Ave N, Suite F
Seattle, WA 98109

MEP Engineer
WSP USA
1001 Fourth Ave., Suite 3100
Seattle, WA 98154

principal architect _____
project manager _____
drawn by _____
checked by Checker
job no. _____
date 5/17/2024

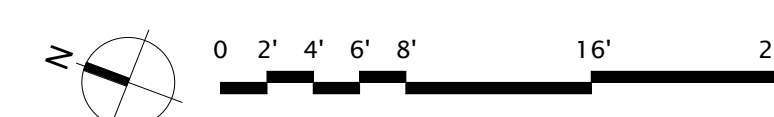
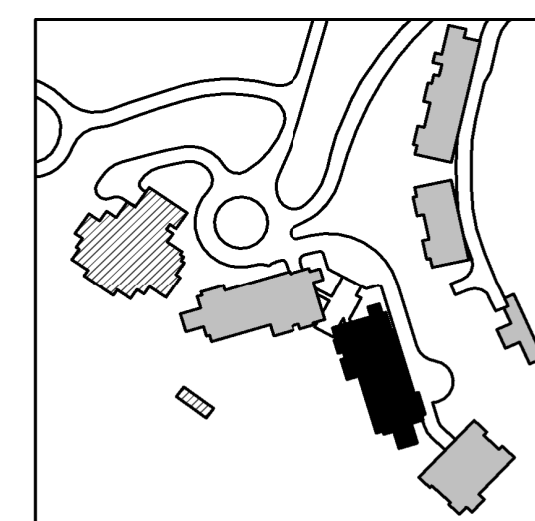
revisions:

no.	date	by
-----	------	----

IFC Set 2 of 3
5/17/2024

TOWER B - LVL 5
ELECTRICAL LIGHTING
PLAN

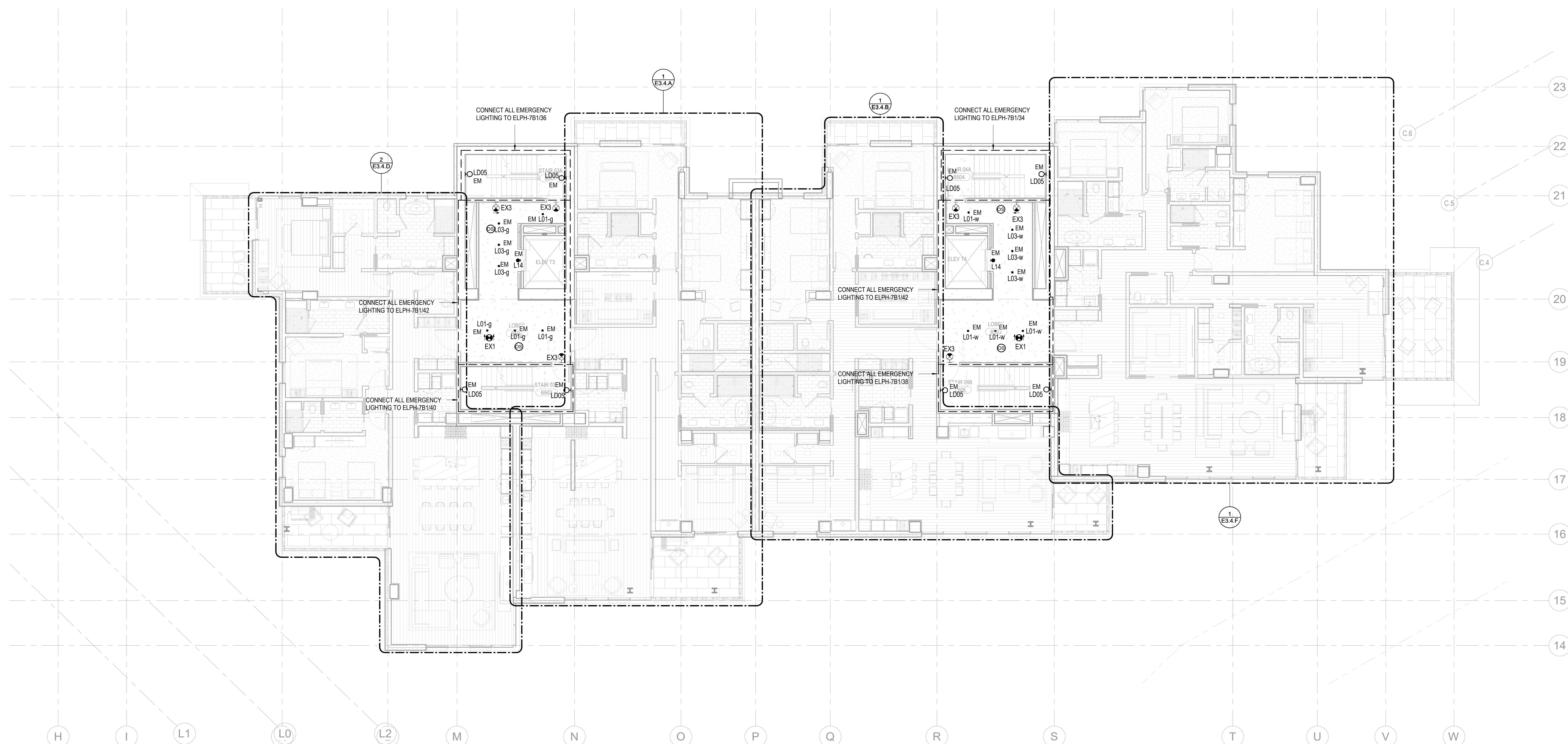
E3.2B.15



SHEET NOTES:

- A. DRAWINGS ARE INTENDED TO SHOW GENERAL ARRANGEMENT, DESIGN, AND EXTENT OF WORK AND ARE DIAGRAMMATIC. DRAWINGS ARE NOT INTENDED TO SHOW EXACT LOCATIONS EXCEPT WHERE DIMENSIONS ARE SHOWN. ELECTRICAL WORK IS SHOWN ON A STANDARD RIGID CONDUIT SYSTEM UNLESS OTHERWISE SPECIFIED. REFER TO MATERIALS OF COMMENCEMENT WITH WORK. VERIFY MEASUREMENTS PERTAINING THERETO AND TO ASSUME RESPONSIBILITY THEREFOR BY SUBSTANTIAL DIFFERENCES BETWEEN THE DRAWINGS AND CONDITIONS OF THE FIELD. THE CONTRACTOR SHALL NOTIFY THE PROJECT MANAGER FOR CONSULTATION BEFORE ANY FIELD CORRECTIONS ARE REQUIRED TO INSTALL A COMPLETE ELECTRICAL SYSTEM AS INDICATED ON DRAWINGS AND SPECIFICATIONS.
- B. PROVIDE EXISTING SIONS AND CONNECT EXISTING SIONS AND LUMINAIRES NOTED AS EMERGENCY TO EXISTING POWER SYSTEMS.
- C. REFER TO LUMINAIRE SCHEDULE FOR INFORMATION.
- D. EXISTING CALL NUMBER NUMBERS ARE SUBJECT TO CHANGE BY MANUFACTURER. VERIFY WITH MANUFACTURER FOR CORRECTIONS.
- E. VERIFY EQUIPMENT SIZES AND POWER REQUIREMENTS FOR EQUIPMENT PROVIDED BY OTHERS.
- F. ELECTRICAL CONDITIONS IN FINISHED SPACES SHALL BE CONCEALED. COORDINATE WITH OTHER TRADES AND USE CHASES AND CEILING SPACES. LOCATIONS OF ELECTRICAL JUNCTION BOXES IN FINISHED SPACES SHALL BE APPROVED BY ARCHITECT PRIOR TO PO

NUMBERED NOTES:



1 TOWER B - LEVEL 5 ELECTRICAL LIGHTING RCP
SCALE: 1/8" = 1'-0"

