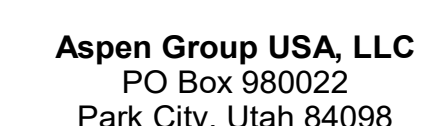


Seattle, Washington 98104 USA  
+1 206 624 5670 [olav@kurdig.com](mailto:olav@kurdig.com)

project: **SOMMET BLANC**  
3200 Morris Ave. (B3 East Branch)



**MEP Engineer**  
**WSP USA**  
1001 Fourth Ave., Suite 3100  
Seattle, WA 98154

revisions:

no.	date	loc.
1	1950	...
2	1951	...
3	1952	...
4	1953	...
5	1954	...
6	1955	...
7	1956	...
8	1957	...
9	1958	...
10	1959	...
11	1960	...
12	1961	...
13	1962	...
14	1963	...
15	1964	...
16	1965	...
17	1966	...
18	1967	...
19	1968	...
20	1969	...
21	1970	...
22	1971	...
23	1972	...
24	1973	...
25	1974	...
26	1975	...
27	1976	...
28	1977	...
29	1978	...
30	1979	...
31	1980	...
32	1981	...
33	1982	...
34	1983	...
35	1984	...
36	1985	...
37	1986	...
38	1987	...
39	1988	...
40	1989	...
41	1990	...
42	1991	...
43	1992	...
44	1993	...
45	1994	...
46	1995	...
47	1996	...
48	1997	...
49	1998	...
50	1999	...
51	2000	...
52	2001	...
53	2002	...
54	2003	...
55	2004	...
56	2005	...
57	2006	...
58	2007	...
59	2008	...
60	2009	...
61	2010	...
62	2011	...
63	2012	...
64	2013	...
65	2014	...
66	2015	...
67	2016	...
68	2017	...
69	2018	...
70	2019	...
71	2020	...
72	2021	...
73	2022	...
74	2023	...
75	2024	...
76	2025	...
77	2026	...
78	2027	...
79	2028	...
80	2029	...
81	2030	...
82	2031	...
83	2032	...
84	2033	...
85	2034	...
86	2035	...
87	2036	...
88	2037	...
89	2038	...
90	2039	...
91	2040	...
92	2041	...
93	2042	...
94	2043	...
95	2044	...
96	2045	...
97	2046	...
98	2047	...
99	2048	...
100	2049	...

### E3.4.1

A. DRAWINGS ARE INTENDED TO SHOW GENERAL ARRANGEMENT, DESIGN, AND EXTENT OF WORK AND ARE DIAGRAMMATIC. DRAWINGS ARE NOT INTENDED TO SHOW EXACT LOCATIONS EXCEPT WHERE DIMENSIONS ARE SHOWN. ELECTRICAL WORK IS SHOWN BY USING STANDARD INDUSTRY SYMBOLS. ARCHITECT PROVIDES MATERIALS OR COMMENCEMENT WITH WORK. VERIFY MEASUREMENTS PERTAINING THEREON AND PROVIDE ANY NECESSARY ADJUSTMENTS TO THE ELECTRICAL WORK. VERIFY MATERIALS, DRAWINGS AND CONDITIONS IN THE FIELD SHALL BE SUBMITTED TO THE CONSTRUCTION MANAGER FOR CONSIDERATION BEFORE PROCEEDING WITH WORK.

B. THE ELECTRICAL CONTRACTOR SHALL BE RESPONSIBLE FOR OBTAINING PERMITS AND REQUIRED TO INSTALL A COMPLETE ELECTRICAL SYSTEM AS INDICATED ON DRAWINGS AND SPECIFICATIONS. PROVIDE EXISTING SITES AND CONNECT EXISTING SIGNS AND LUMINAIRES NOT AS EMERGENCY LIGHTS TO POWER SUPPLY. PROVIDE EXISTING LIGHTS TO POWER SUPPLY.

C. PROVIDE EXISTING LIGHTS TO POWER SUPPLY. PROVIDE EXISTING LIGHTS TO POWER SUPPLY.

D. REFER TO LUMINAIRE SCHEDULE FOR INFORMATION.

E. FURNISH MATERIALS AND EQUIPMENT. PROVIDE CHANGE BY MANUFACTURER, REFER TO FUTURE CATALOG NUMBERS FOR ACCURACY.

F. VERIFY EQUIPMENT SIZES AND POWER REQUIREMENTS FOR EQUIPMENT PROVIDED BY OTHERS.

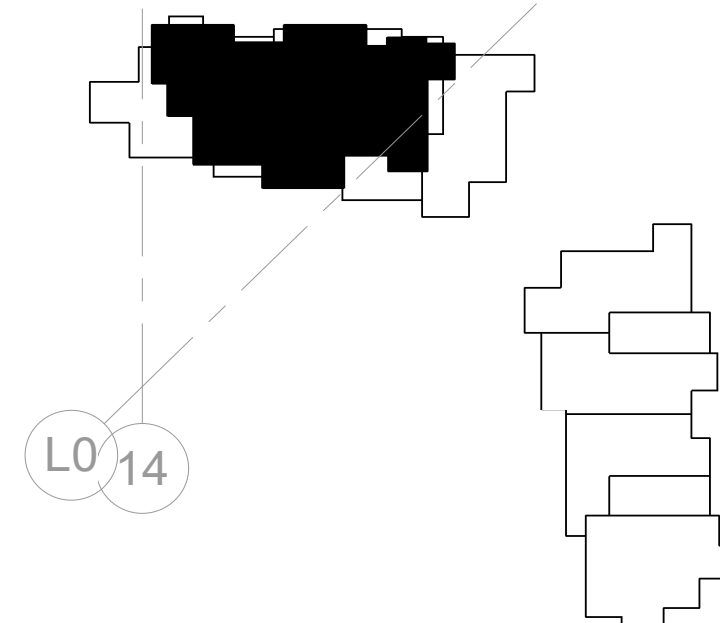
G. ELECTRICAL CONDITIONS IN FINISHED SPACES SHALL BE CONCEALED. COORDINATE WITH OTHER TRADES AND USE CHASES AND CEILING SPACES. LOCATIONS OF ELECTRICAL JUNCTIONS IN FINISHED SPACES SHALL BE CONCEALED. PROVIDE CONCEALED ROUTING IN ROUGH-IN.

H. PROVIDE REMOTE REMOTE MOUNTING LOCATIONS WITH ARCHITECT. PROVIDE TO ROUGH-IN.

I. COORDINATE LUMINAIRE VOLTAGE WITH ARCHITECT AND OWNER. PROVIDE TO PURCHASE.

**NUMBERED NOTES:**

- 1 LUTRON WIRELESS PICO CONTROL SWITCH IS TO BE SUPPLIED AND INSTALLED FOR SHADE CONTROL.
- 2 LIGHT FIXTURE LOCATION IN CLOSETS ARE TO BE CONTROLLED BY CLOSET DOOR JAMB SWITCH.
- 3 REFER TO INSTALL LUTRON RADIO RAS SYSTEM TO PROVIDE PARTIAL LIGHTING CONTROL IN THE RESIDENTIAL, UTILITY MASTER BEDROOM (DENOTED AS B1) AND ALL ROOMS WITH MORE THAN THREE (3) LIGHTING CONTROL ZONES ARE TO BE CONTROLLED BY LOCAL DIMMERS.
- 4 REFER TO INSTALL LUTRON RADIO RAS SYSTEM, ALL ROOMS WITH THREE (3) LIGHTING CONTROL ZONES ARE TO BE CONTROLLED BY LOCAL DIMMERS.
- 5 REFER TO INSTALL LUTRON RADIO JUNCTION BOX COMPLETE WITH CAPTED LIGHTING CIRCUIT WIRING FOR INSTALLATION OF FUTURE CLOSET LIGHT FIXTURE.
- 6 REFER TO ARCHITECTURAL DRAWINGS AND ELEVATIONS FOR EXACT DIMENSION AND MOUNTING LOCATION OF LIGHT FIXTURE. USE COORDINATE WITH MOORE CONTRACTOR TO INSTALLATION.



SCALE: 1/4" = 1'-0"

0 1' 2' 3' 4' 8' 12'