

1. SCOPE OF WORK INCLUDES SPRINKLER PROTECTION THROUGHOUT ALL AREAS IN ACCORDANCE WITH NFPA 13. SPRINKLERS ARE INDICATED IN AREAS WITH FINISHED CEILINGS FOR COORDINATION PURPOSES. INSTALLING CONTRACTOR SHALL BE RESPONSIBLE FOR DETAILED DESIGN OF BRANCH PIPING AND UPRIGHT SPRINKLERS IN AREAS WITHOUT FINISHED CEILINGS.
2. REFER TO TYPICAL UNIT PLANS FOR SPRINKLER LAYOUTS ON RESIDENTIAL FLOORS.

159 South Jackson St, Suite 600
Seattle, Washington 98104 USA
+1 206 624 5670 olsenkjunding.com

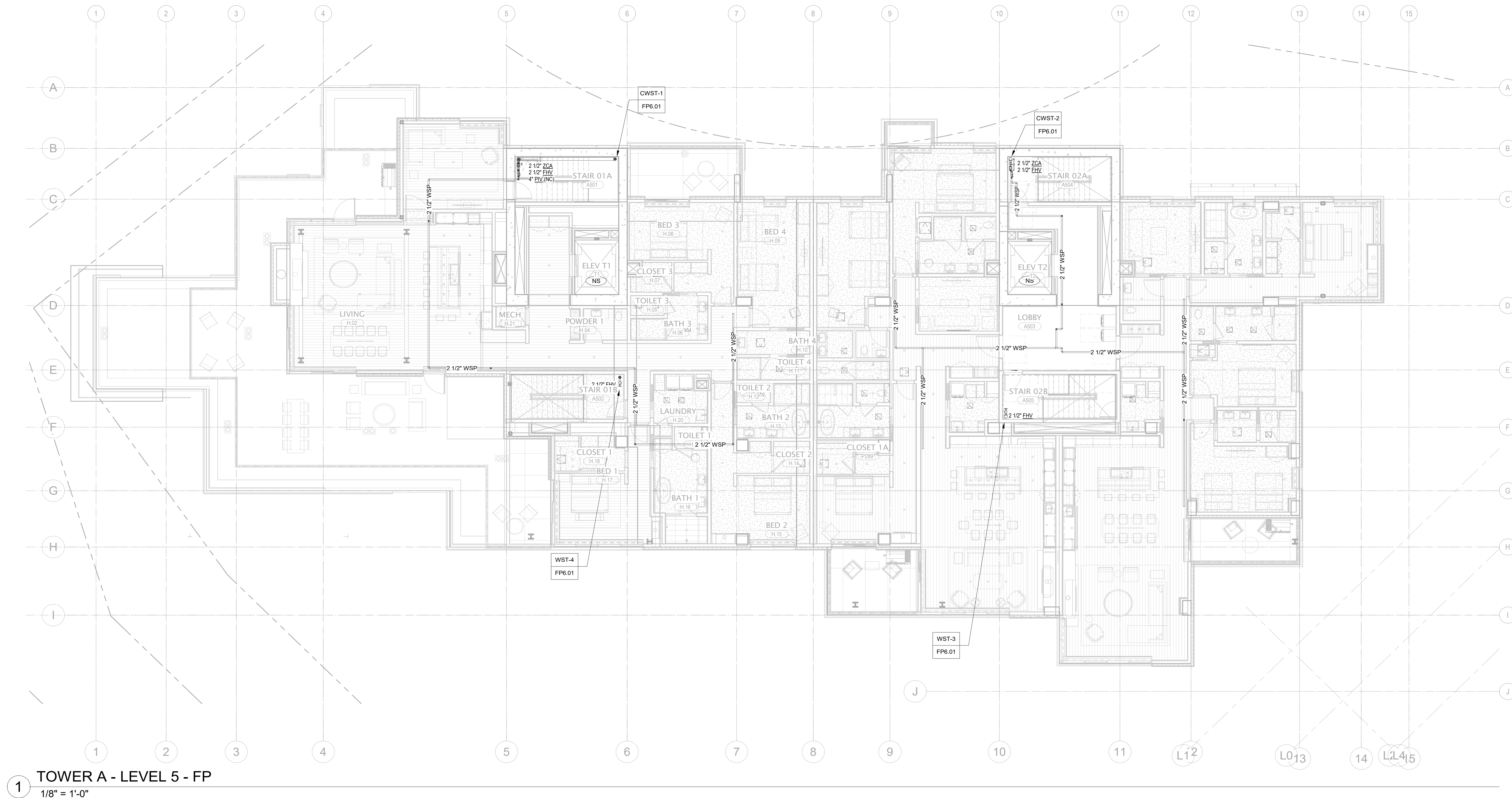
SOMMET BLANC - AB
DEER VALLEY, UTAH

principal architect _____
project manager...JCC _____
drawn by...CRB_SMK _____
checked by...Checker _____
job no. 20052 _____
date 05/17/2024 _____

[illegible]

IFC Set 2 of 3
05/17/2024

FP2.2A.15



1 TOWER A - LEVEL 5 - FP
1/8" = 1'-0"

