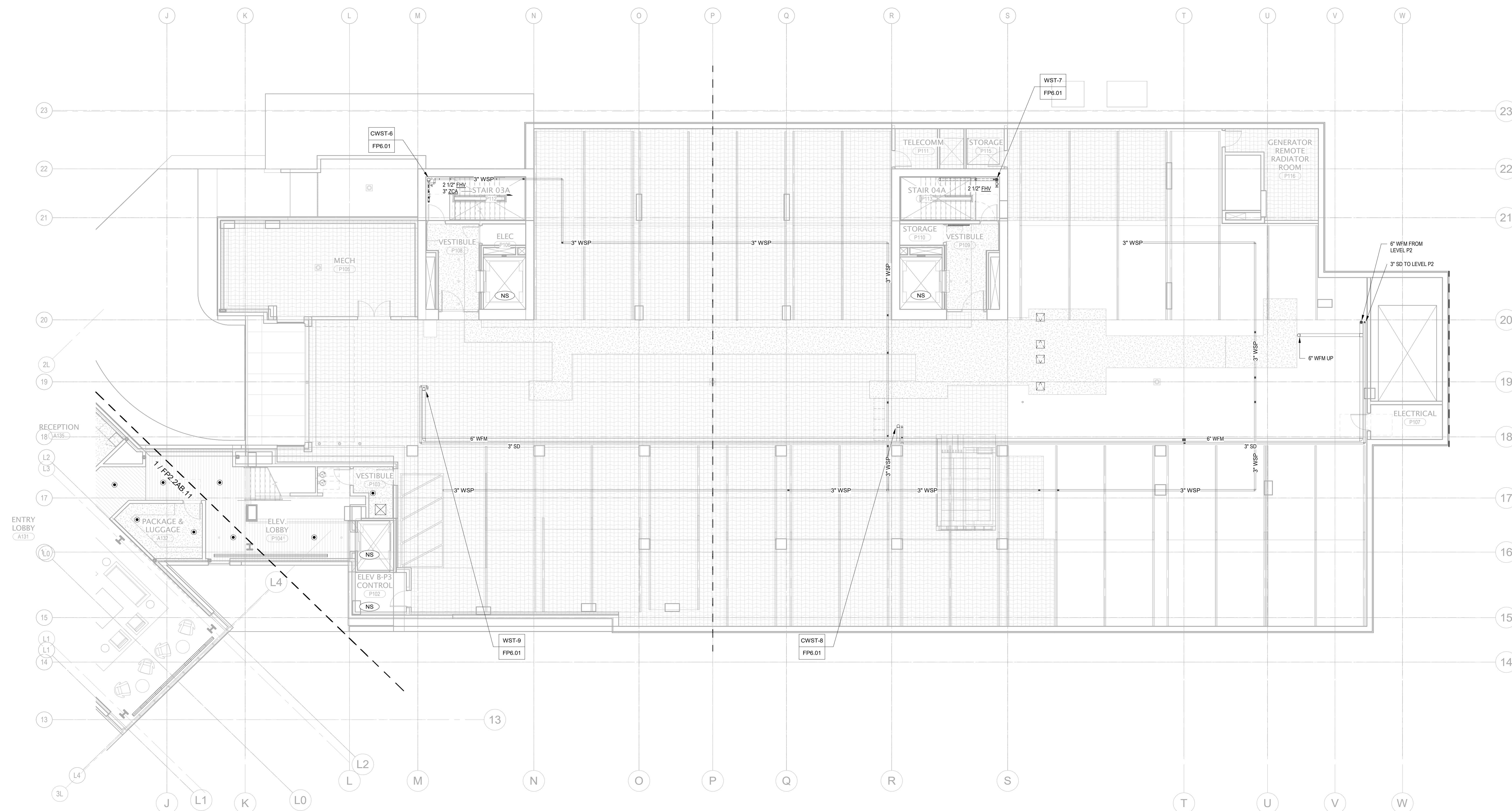


1. SCOPE OF WORK INCLUDES SPRINKLER PROTECTION THROUGHOUT ALL AREAS IN ACCORDANCE WITH NFPA 13. SPRINKLERS ARE INDICATED IN AREAS WITH FINISHED CEILINGS FOR COORDINATION PURPOSES. INSTALLING CONTRACTOR SHALL BE RESPONSIBLE FOR DETAILED DESIGN OF BRANCH PIPING AND UPRIGHT SPRINKLERS IN AREAS WITHOUT FINISHED CEILINGS.
2. REFER TO TYPICAL UNIT PLANS FOR SPRINKLER LAYOUTS ON RESIDENTIAL FLOORS.



1 TOWER B - LEVEL P1 - FP  
1/8" = 1'-0"

159 South Jackson St, Suite 600  
Seattle, Washington 98104 USA  
+1 206 624 5670 [olson@undig.com](mailto:olson@undig.com)

Olson Kundig

**SOMMET BLANC - AB**  
DEER VALLEY, UTAH

**White Summit Development, LLC**  
PO Box 980022  
Park City, Utah 84098

Acoustic Consultant  
**BRC Acoustics**  
1932 1st Ave, Suite 620  
Seattle, WA 98101

Pool Consultant  
**Cloward H2O**  
2696 N University Ave, Suite 290  
Provo, UT 84604

**Landscape Architect**  
**EPG Design**  
6949 South High Tech Drive, Suite 100  
Midvale, Utah 84047

Specifications Writer  
**Friday Group**  
88 Mainelli Road  
Middlebury, VT

**Code Consultant**  
**Holmes**  
600 1st Avenue, Suite 200A  
Seattle, WA 98104

Fire Protection Engineer  
**Jensen Hughes**  
One Research Drive, Suite 305C  
Westborough, MA 01581

**Vertical Transportation Consultant**  
**Lerch Bates**  
19515 North Creek Parkway, Suite 304  
Bothell, WA 98011

**Structural Engineer**  
**Magnusson Klemencic Associates**  
1301 5th Ave., Suite 3200  
Seattle, WA 98101

**Lighting Designer**  
O.  
1319 SE MLK Blvd, Suite 210  
Portland, Oregon 97219

**Building Envelope Consultant**  
**RDH**  
2101 N 34th St  
Seattle, WA 98103

Accessibility Consultant  
**Studio Pacifica**  
 2144 Westlake Ave N, Suite F  
 Seattle, WA 98109

**MEP Engineer**  
**WSP USA**  
1001 Fourth Ave., Suite 3100  
Seattle, WA 98154

principal architect \_\_\_\_\_  
project manager...JGC \_\_\_\_\_  
drawn by...CRB\_SMK \_\_\_\_\_  
checked by...Checker \_\_\_\_\_  
job no. 20052  
date 05/17/2024

visions:

---



---



---



---



---



---



---



---



---



---

\_\_\_\_\_ date \_\_\_\_\_ by \_\_\_\_\_

FC Set 2 of 3

05/17/2024

FIRE PROTECTION PLAN  
- TOWER B - LVL P1

FP2.2B.03

