

1. SCOPE OF WORK INCLUDES SPRINKLER PROTECTION THROUGHOUT ALL AREAS IN ACCORDANCE WITH NFPA 13. SPRINKLERS ARE INDICATED IN AREAS WITH FINISHED CEILINGS FOR COORDINATION PURPOSES. INSTALLING CONTRACTOR SHALL BE RESPONSIBLE FOR DETAILED DESIGN OF BRANCH PIPING AND UPRIGHT SPRINKLERS IN AREAS WITHOUT FINISHED CEILINGS.
2. REFER TO TYPICAL UNIT PLANS FOR SPRINKLER LAYOUTS ON RESIDENTIAL FLOORS.

159 South Jackson St, Suite 600  
Seattle, Washington 98104 USA  
+1 206 624 5670 [olson@bundig.com](mailto:olson@bundig.com)

SOMMET BLANC - AB  
DEER VALLEY, UTAH

**MEP Engineer**  
**WSP USA**  
1001 Fourth Ave., Suite 3100  
Seattle, WA 98154

principal architect \_\_\_\_\_  
project manager JOC \_\_\_\_\_  
drawn by CRB, SMK \_\_\_\_\_  
checked by Checker \_\_\_\_\_  
job no. 20052  
date 05/17/2024

#### visions:

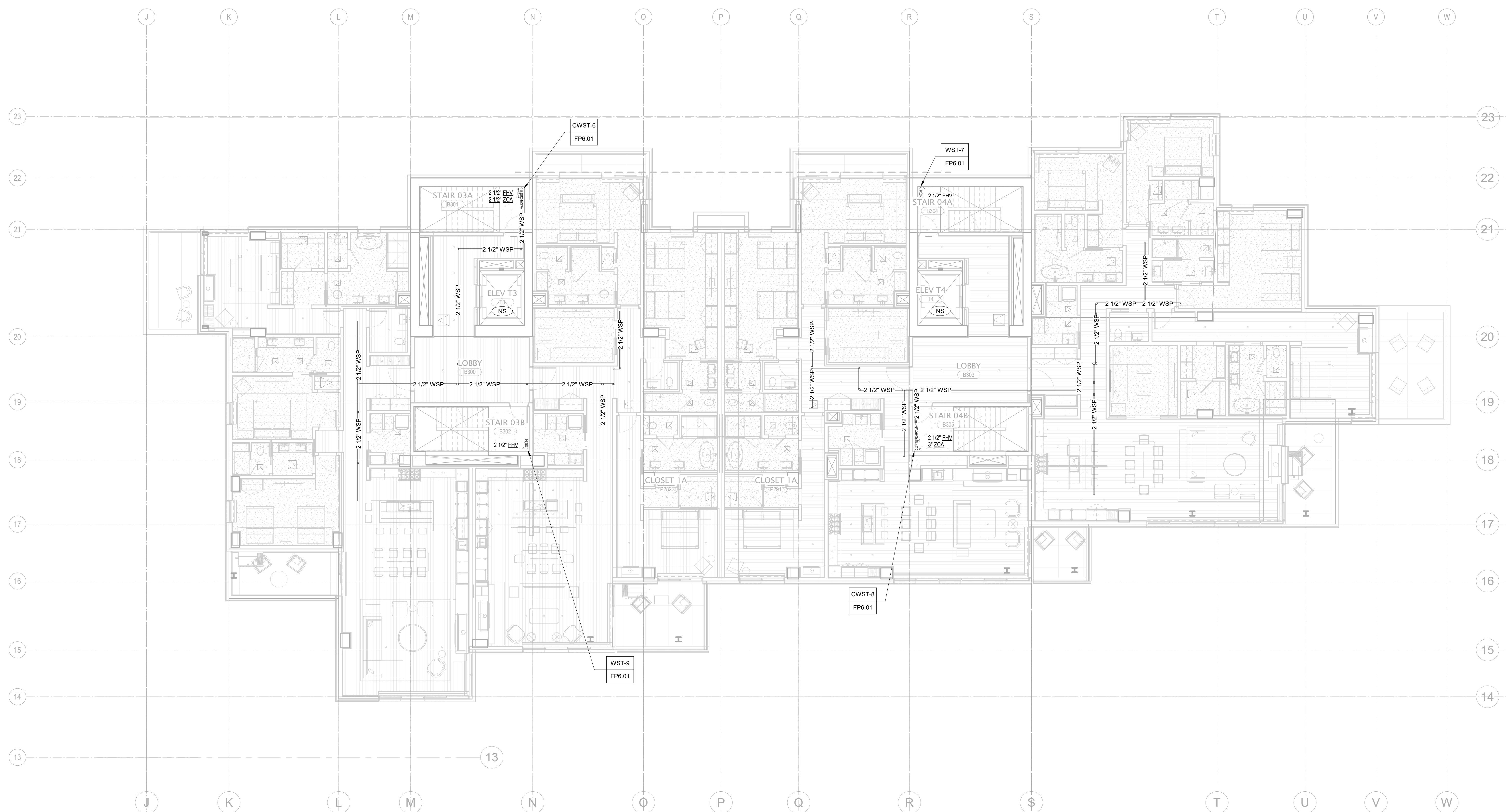
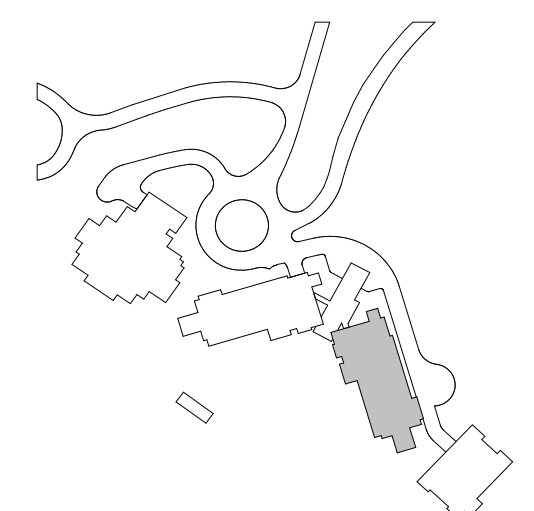
\_\_\_\_\_, date \_\_\_\_\_ by \_\_\_\_\_

FC Set 2 of 3

05/17/2024

FIRE PROTECTION PLAN  
- TOWER B - LVL 3

FP2.2B.13



1 TOWER B - LEVEL 3 - FP  
1/8" = 1'-0"