

GENERAL NOTES:

- SCOPE OF WORK INCLUDES SPRINKLER PROTECTION THROUGHOUT ALL AREAS IN ACCORDANCE WITH NFPA 13. SPRINKLERS ARE INDICATED IN AREAS WITH FINISHED CEILINGS FOR COORDINATION PURPOSES. INSTALLING CONTRACTOR SHALL BE RESPONSIBLE FOR DETAILED DESIGN OF BRANCH PIPING AND UPRIGHT SPRINKLERS IN AREAS WITHOUT FINISHED CEILINGS.
- REFER TO TYPICAL UNIT PLANS FOR SPRINKLER LAYOUTS ON RESIDENTIAL FLOORS.

Reserved for permit stamp

100 South Jackson St., Suite 400  
Seattle, Washington 98104 USA  
+1 206 454 5900 olsonkundig.com

Olson Kundig

project  
SOMMET BLANC - AB  
DEER VALLEY, UTAH

White Summit Development, LLC  
PO Box 980022  
Park City, Utah 84098

Acoustic Consultant  
BRC Acoustics  
1932 1st Ave., Suite 420  
Seattle, WA 98101

Pool Consultant  
Cloward H2O  
2099 N University Ave., Suite 290  
Provo, UT 84604

Landscape Architect  
EPG Design  
6940 South High Tech Drive, Suite 100  
Midvale, Utah 84047

Specifications Writer  
Friday Group  
88 Marrett Road  
Middlebury, VT

Code Consultant  
Holmes  
600 1st Avenue, Suite 200A  
Seattle, WA 98104

Fire Protection Engineer  
Jensen Hughes  
One Research Drive, Suite 305C  
Westborough, MA 01581

Vertical Transportation Consultant  
Lerch Bates  
19515 North Creek Parkway, Suite 304  
Bellevue, WA 98011

Structural Engineer  
Magnusson Klemencic Associates  
1301 5th Ave., Suite 3200  
Seattle, WA 98101

Lighting Designer  
O  
1319 SE MLK Blvd., Suite 210  
Portland, Oregon 97219

Building Envelope Consultant  
RDH  
2101 N 34th St  
Seattle, WA 98103

Accessibility Consultant  
Studio Pacifica  
2144 Westlake Ave N, Suite F  
Seattle, WA 98109

MEP Engineer  
WSP USA  
1001 Fourth Ave., Suite 3100  
Seattle, WA 98104

principal architect: JJC  
project manager: JJC  
drawn by: CBR, SMK  
checked by: Checker  
job no.: 20052  
date: 05/17/2024

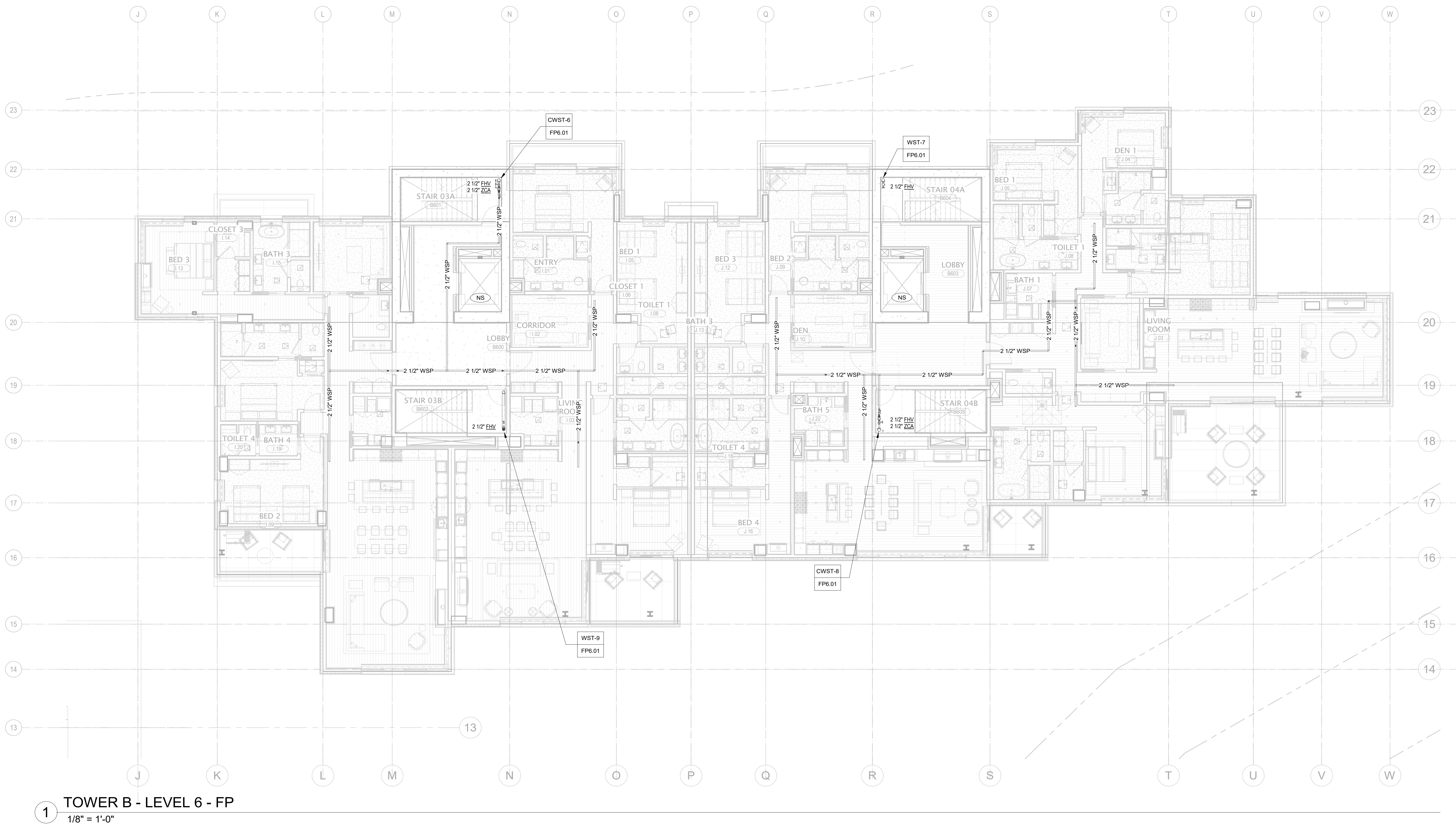
revisions:

no. date by

IFC Set 2 of 3  
05/17/2024

FIRE PROTECTION PLAN  
- TOWER B - LVL 6

FP.2.B.16



1 TOWER B - LEVEL 6 - FP  
1/8" = 1'-0"

