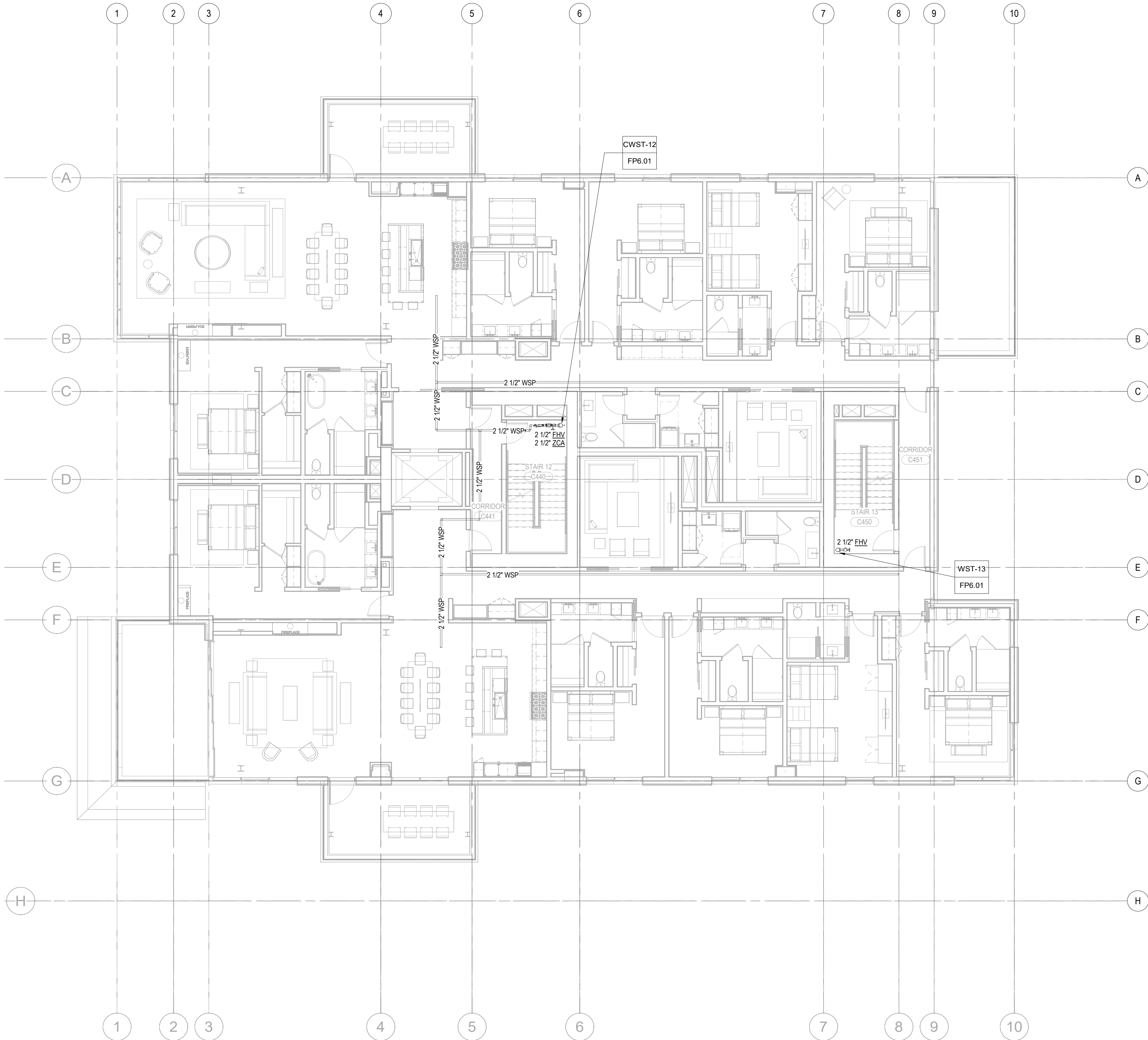
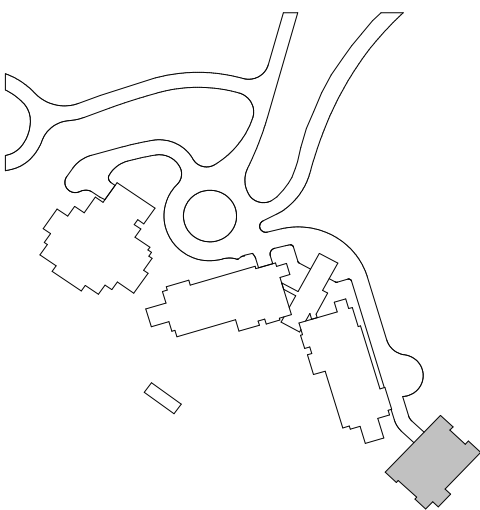


GENERAL NOTES:

1. SCOPE OF WORK INCLUDES SPRINKLER PROTECTION THROUGHOUT ALL AREAS IN ACCORDANCE WITH NFPA 13. SPRINKLERS ARE INDICATED IN HYDRULIC CALCULATION REMOTE AREAS AND AREAS WITH FINISHED CEILINGS FOR COORDINATION PURPOSES. INSTALLING CONTRACTOR SHALL BE RESPONSIBLE FOR DETAILED DESIGN OF BRANCH PIPING AND UPRIGHT SPRINKLERS IN AREAS WITHOUT FINISHED CEILINGS.



1 TOWER C - LEVEL 4 - FP
1/8" = 1'-0"



Reserved for permit stamp

100 South Jackson St., Suite 400
Seattle, Washington 98104 USA
+1 206 454 1900 olsonkundig.com

Olson Kundig

project
SOMMET BLANC - C
DEER VALLEY, UTAH

White Summit Development, LLC
PO Box 980022
Park City, Utah 84098

Acoustic Consultant
BRC Acoustics
1932 1st Ave., Suite 420
Seattle, WA 98101

Pool Consultant
Cloward H2O
2096 N University Ave., Suite 290
Provo, UT 84604

Landscape Architect
EPG Design
6940 South High Tech Drive, Suite 100
Midvale, Utah 84047

Specifications Writer
Friday Group
88 Marmot Road
Middlebury, VT

Code Consultant
Holmes
600 1st Avenue, Suite 200A
Seattle, WA 98104

Fire Protection Engineer
Jensen Hughes
One Research Drive, Suite 305C
Westborough, MA 01581

Vertical Transportation Consultant
Lerch Bates
19515 North Creek Parkway, Suite 304
Bellevue, WA 98011

Structural Engineer
Magnusson Klemencic Associates
1301 5th Ave., Suite 3200
Seattle, WA 98101

Lighting Designer
O
1319 SE MLK Blvd., Suite 210
Portland, Oregon 97219

Building Envelope Consultant
RDH
2101 N 34th St
Seattle, WA 98103

Accessibility Consultant
Studio Pacifica
2144 Westlake Ave N, Suite F
Seattle, WA 98109

MEP Engineer
WSP USA
1001 Fourth Ave., Suite 3100
Seattle, WA 98154

principal architect...TK
project manager...JJC
drawn by...CBL, SMK
checked by...Checker
job no. 20052
date 05/17/2024

revisions:

no. date by

IFC Set 2 of 3
05/17/2024

FIRE PROTECTION PLAN
- TOWER C - LEVEL 4

FP2.2C.14