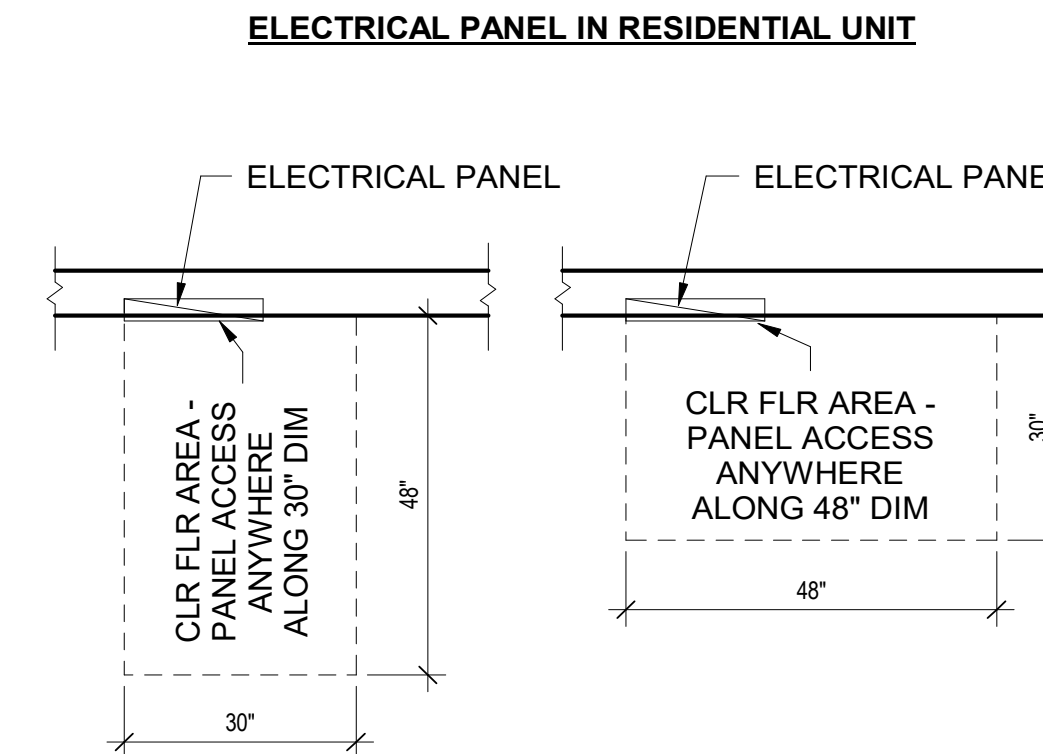
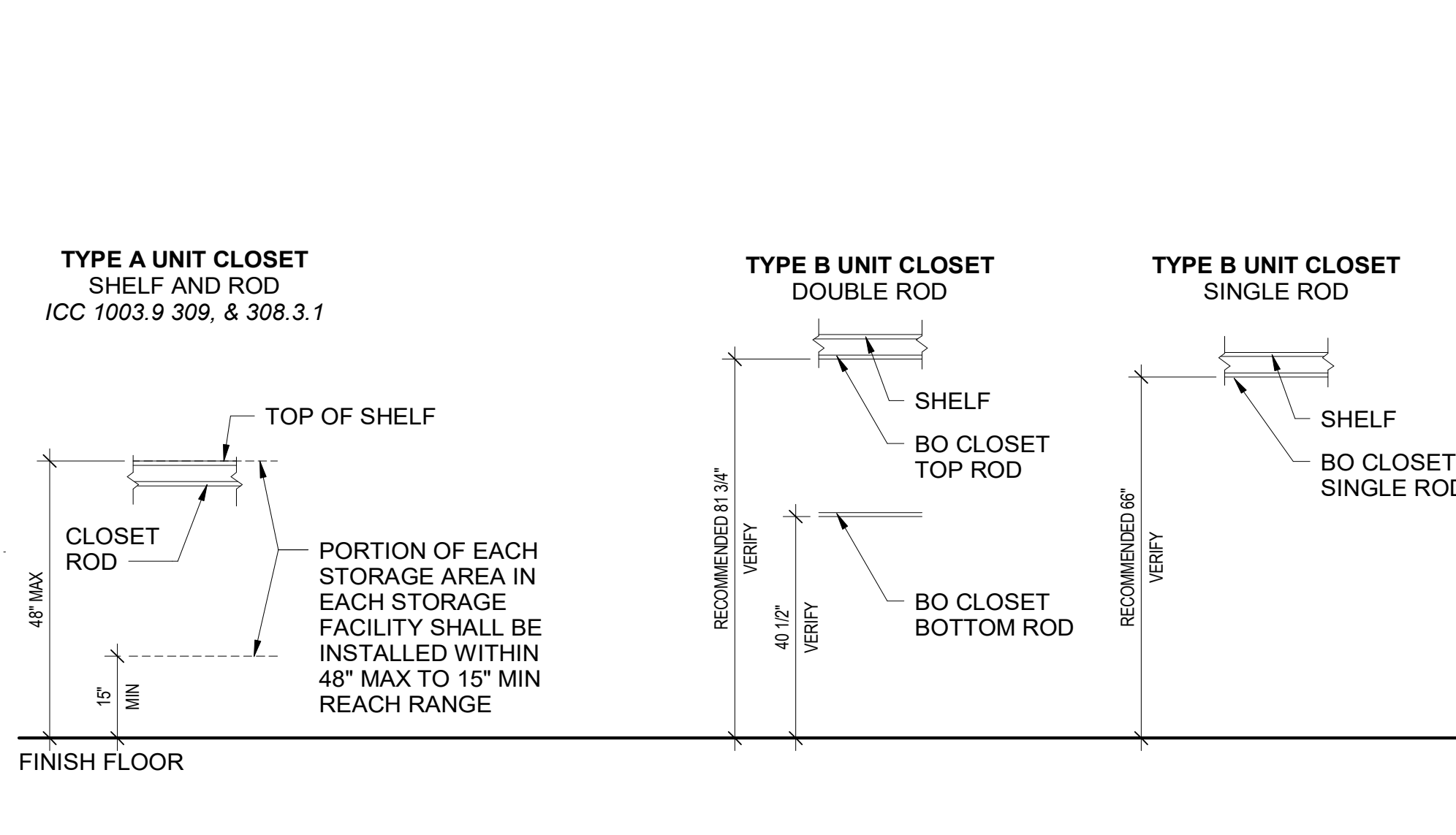


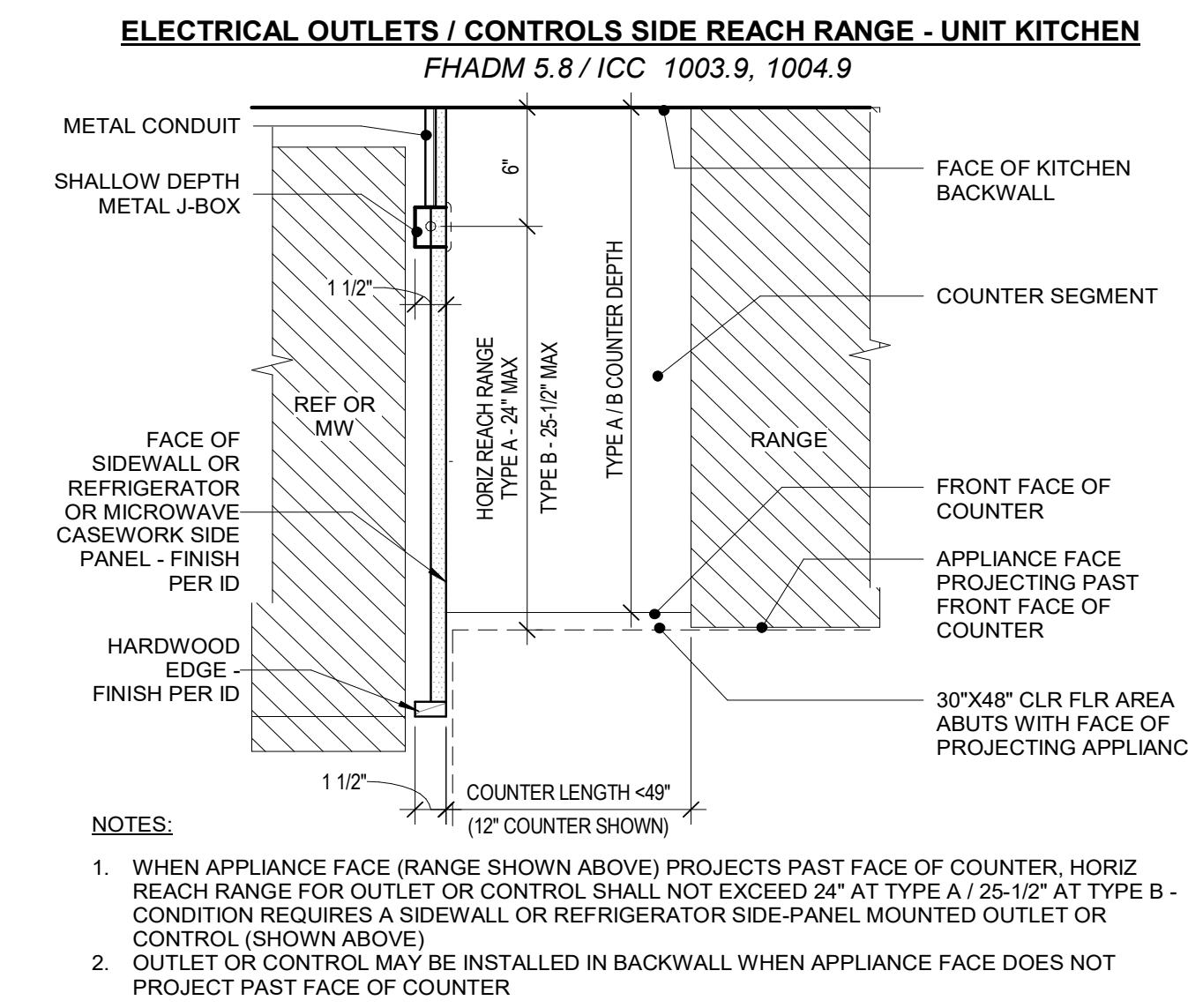
9 TYPE A / TYPE B UNITS - MOUNTING HEIGHTS - ELECTRICAL
1/2" = 1'-0"



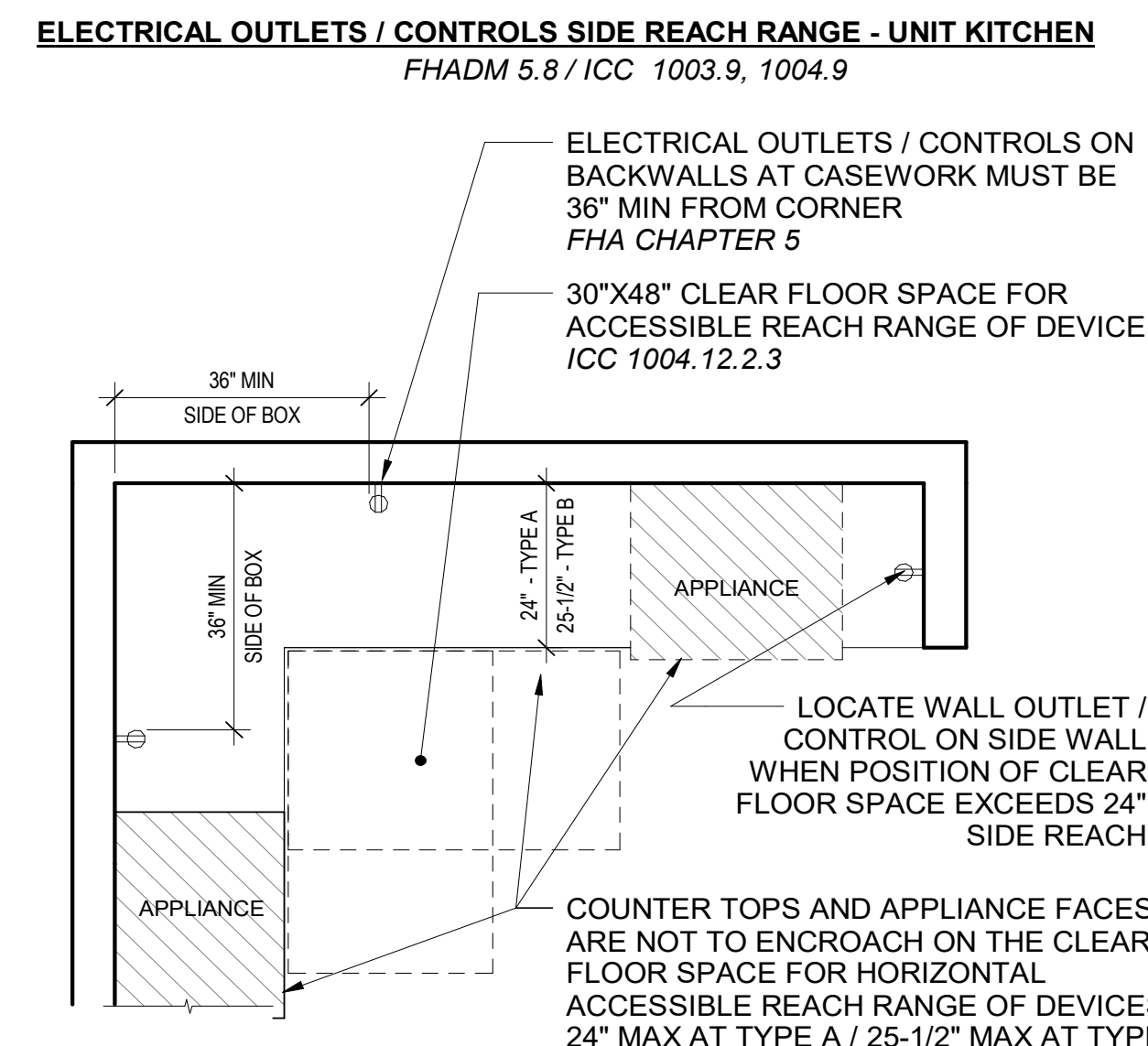
4 TYPE A / B UNITS - ELECT PANEL ACCESS
1/2" = 1'-0"



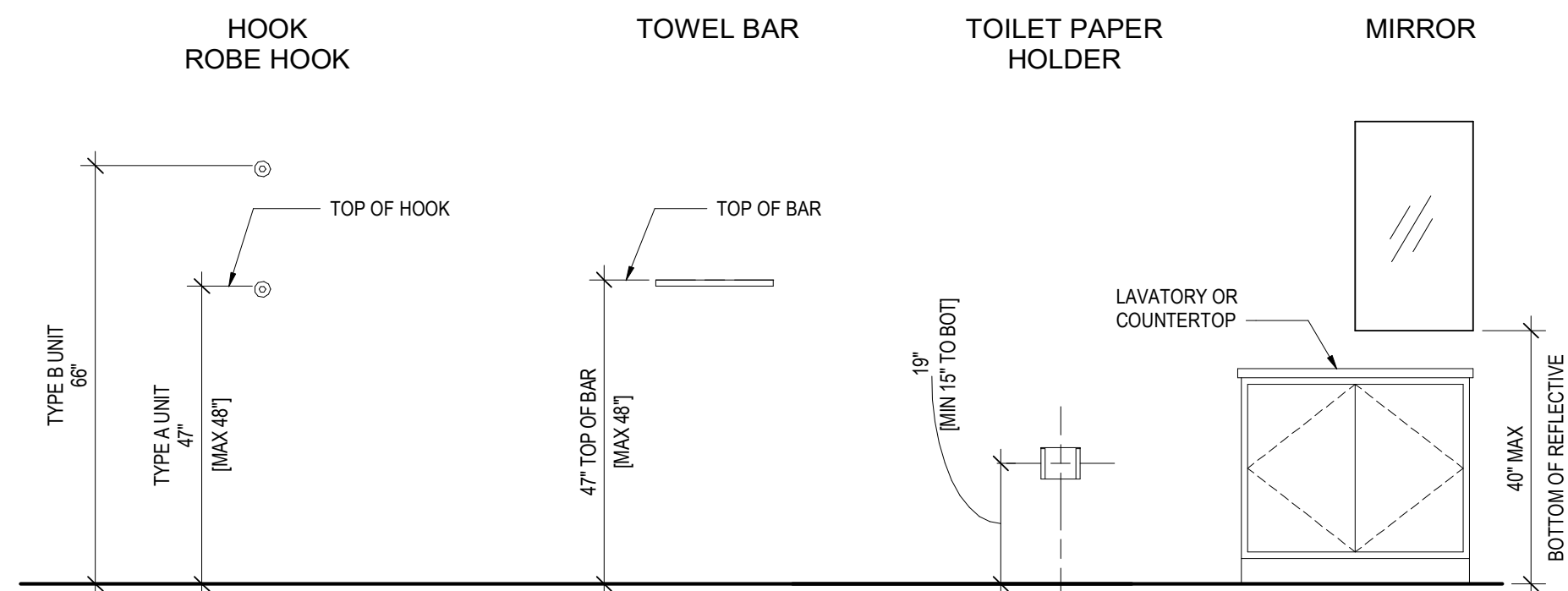
8 TYPE A / TYPE B UNITS - MOUNTING HEIGHTS - CLOSETS
1/2" = 1'-0"



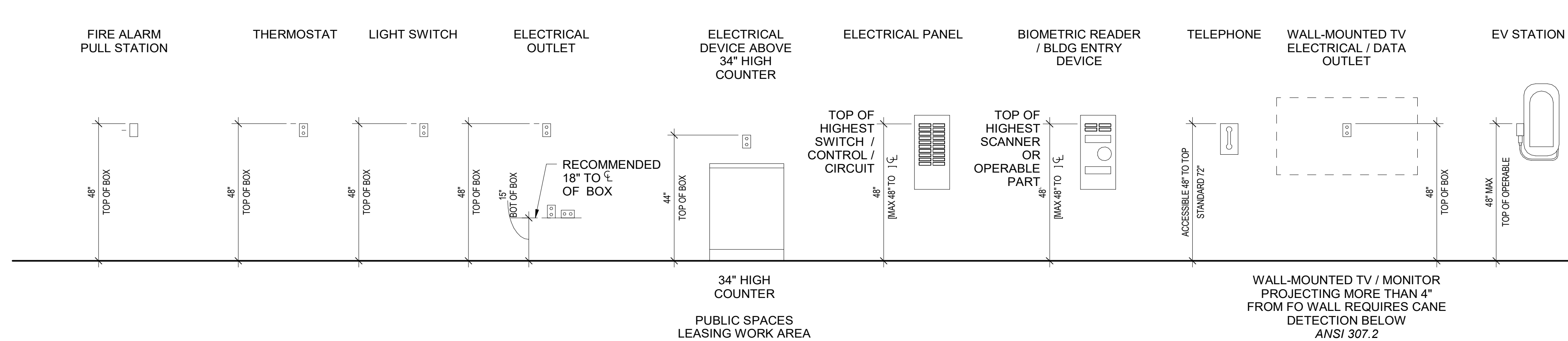
5 TYPE A / TYPE B - OUTLET/CONTROL AT REF SIDE-PANEL
1 1/2" = 1'-0"



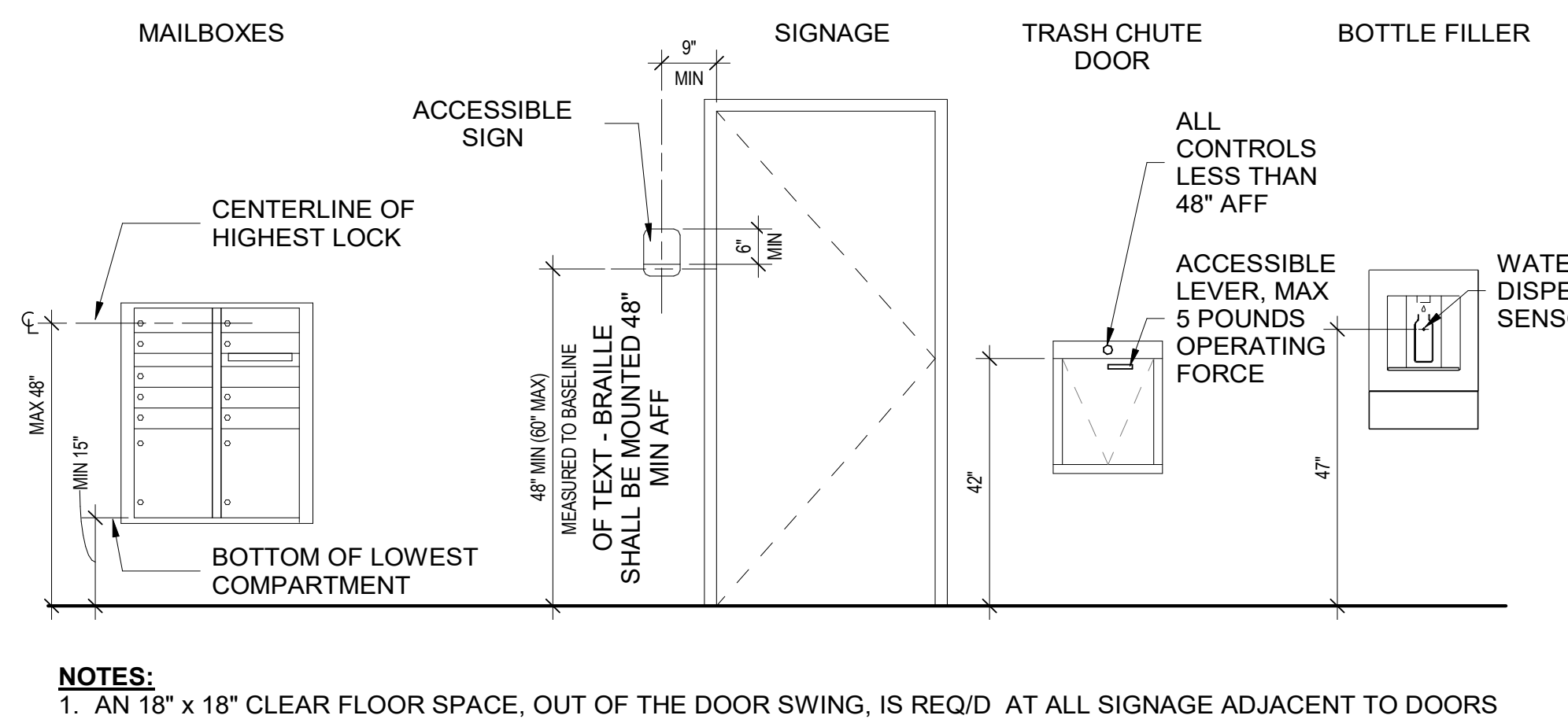
3 TYPE A / B UNITS - KITCHEN CORNER OUTLETS / CONTROLS
1/2" = 1'-0"



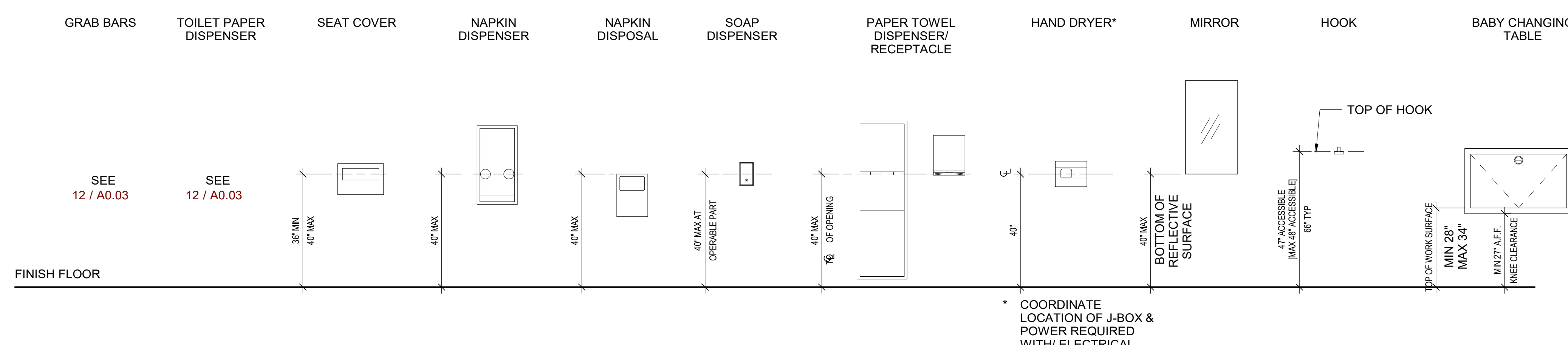
7 TYPE A/TYPE B UNITS - MOUNTING HEIGHTS - BATH ACCESSORIES
1/2" = 1'-0"



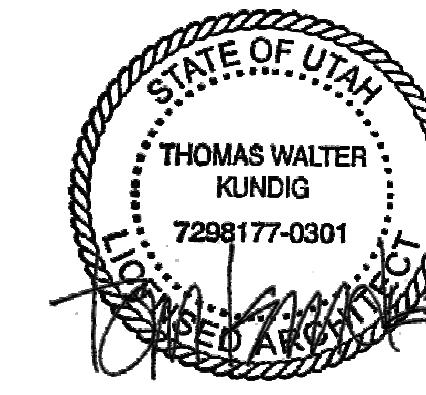
2 PUBLIC / COMMON SPACE - MOUNTING HEIGHTS - ELECTRICAL
1/2" = 1'-0"



6 PUBLIC / COMMON SPACE - MOUNTING HEIGHTS - MISC
1/2" = 1'-0"



1 PUBLIC SPACE - MOUNTING HEIGHTS - TOILET ACCESSORIES
1/2" = 1'-0"



100 South Jackson St. Suite 600
Seattle, Washington 98101 USA
+1 206 834 6570 olsonkundig.com

Olson Kundig

SOMMET BLANC
5500 MARSA CAVE
PARK CITY, UT 84060



Aspen Group USA, LLC
PO Box 980022
Park City, Utah 84098

Pool Consultant
Cloward H2O
2006 N University Ave, Suite 290
Provo, UT 84604

Landscape Architect
EPG Design
6940 South High Tech Drive, Suite 100
Midvale, Utah 84047

Specifications Writer
Friday Group
88 Main St
Middlebury, VT

Code Consultant
Holmes
800 1st Avenue, Suite 200A
Seattle, WA 98104

Fire Protection Engineer
Jensen Hughes
One Research Drive, Suite 305C
Westborough, MA 01581

Vertical Transportation Consultant
Lorch Bates
19515 North Creek Parkway, Suite 304
Bellevue, WA 98011

Structural Engineer
Magnusson Klemencic Associates
1301 5th Ave, Suite 3200
Seattle, WA 98101

Lighting Designer
RDH
1319 SE MLK Blvd, Suite 210
Portland, Oregon 97219

Building Envelope Consultant
RDH
2101 N 34th St
Seattle, WA 98103

Accessibility Consultant
Studio Pacifica
2144 Westlake Ave N, Suite F
Seattle, WA 98109

MEP Engineer
WSP USA
1001 Fourth Ave., Suite 3100
Seattle, WA 98154

principal architect: TK, KM
project manager: TM, JR, SL, MD
drawn by: SK, SS, JR, CP, EA
"JF", BD

checked by: JB
job no.: 2052
date: 05/17/2024

revisions:
1. _____
2. _____
3. _____
4. _____
5. _____
6. _____
7. _____
8. _____
9. _____
10. _____

no. date by

IFC SET 2 OF 3
05/17/2024

ACCESSIBILITY NOTES -
MOUNTING HEIGHTS -
ELEC

A0.04