

PLANT SCHEDULE		
QTY	COMMON / BOTANICAL NAME	SIZE
TREES		
28	AMUR MAPLE ACER GINNALA	2" CAL
5	JAPANESE MAPLE ACER PALMATUM TREES TO BE CUSTOM PICKED BY LANDSCAPE ARCHITECT AT SOURCE	2" CAL
62	QUAKING ASPEN POPULUS TREMULOIDES	4" CAL
181	QUAKING ASPEN POPULUS TREMULOIDES	2" CAL
12	QUAKING ASPEN POPULUS TREMULOIDES	3" CAL
19	TATARIAN MAPLE ACER TATARICUM	2" CAL
SHRUBS		
108	BEAUTY BUSH KOLKWTZIA AMABILIS	5" GAL
461	EMERALD CARPET MANZANITA ARCTOSTAPHYLOS X EMERALD CARPET	5" GAL
486	LITTLE BLUESTEM SCHIZACHYRIUM SCOPARIUM	5" GAL
338	MOUNTAIN SNOWBERRY SYMPHORICARPOS OREOPHILUS	5" GAL
47	OREGON GRAPE BERBERIS AQUIFOLIUM	5" GAL
162	PROSTRATE PLUM YEW CEPHALOTAXUS HARRINGTONIA 'PROSTRATA'	5" GAL
167	WRIGHT'S STONECROP SEDUM WRIGHTII	5" GAL
GROUND COVERS		
60,780 SF	BIONATIVE SOD NOTE: ROCKY MOUNTAIN WILDFLOWER MIX OVERSEEDDED INTO BIO NATIVE SOD AFTER SOD INSTALLATION	SOD
5,509 SF	KENTUCKY BLUEGRASS POA PRATENSIS	SOD

199 South Jackson St. Suite 400  
Seattle, Washington 98104 USA  
+1 206 854 1870 olsonkundig.com

Olson Kundig

SOMMET BLANC RESIDENCE 1  
ADDRESS  
PARK CITY, UT

White Summit Development, LLC  
PO Box 980022  
Park City, Utah 84098

Acoustic Consultant  
BRC Acoustics  
1322 1st Ave, Suite 620  
Seattle, WA 98101

Pool Consultant  
Cloward H2O  
2650 N University Ave, Suite 290  
Provo, UT 84604

6848 South High Tech Drive, Suite 100  
Midvale, Utah 84047

Specifications Writer  
Friday Group  
88 Mainelli Road  
Middletown, VT

Code Consultant  
Holmes  
600 1st Avenue, Suite 200A  
Seattle, WA 98104

Fire Protection Engineer  
Jensen Hughes  
One Research Drive, Suite 305C  
Westborough, MA 01581

Vertical Transportation Consultant  
Larson Bates  
19515 North Creek Parkway, Suite 304  
Bothell, WA 98011

Structural Engineer  
Magnusson Homeomic Associates  
1301 5th Ave, Suite 3200  
Seattle, WA 98101

Lighting Designer  
DL  
1319 SE MLK Blvd, Suite 210  
Portland, Oregon 97219

Building Envelope Consultant  
RDN  
2101 N 34th St  
Seattle, WA 98103

Accessibility Consultant  
Studio Pacifica  
2144 Westlake Ave N, Suite F  
Seattle, WA 98109

MEP Engineer  
WSP USA  
1001 Fourth Ave., Suite 3100  
Seattle, WA 98154

Grant Hardy

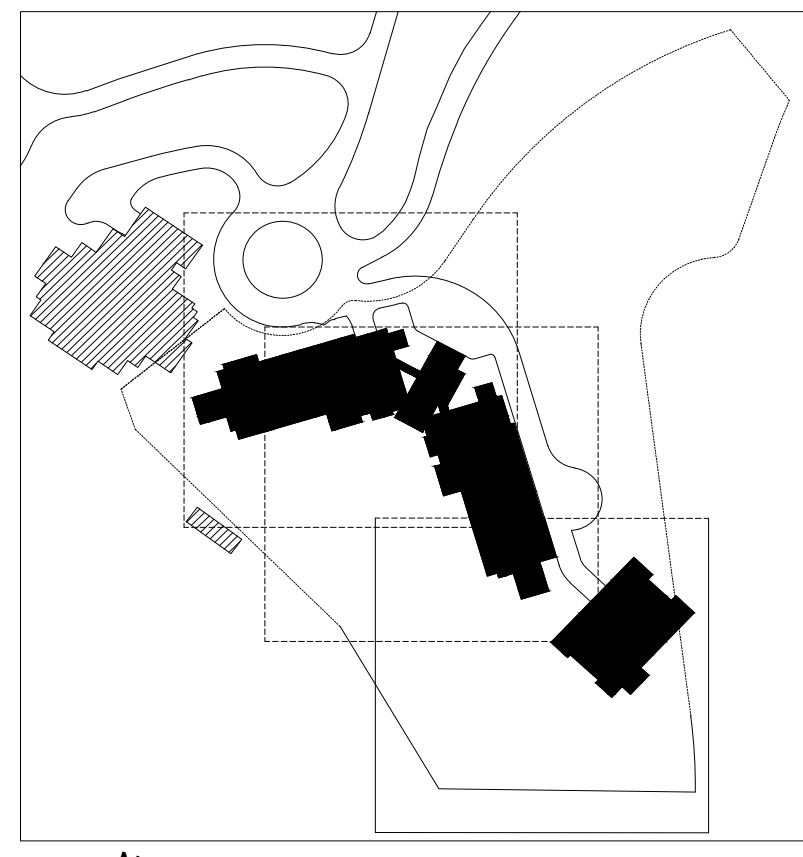
Grant Hardy

Checker

20552

May 17, 2024

IFC 2.917/2024



0 4' 8' 12' 16' 32' 48'

1" = 10'-0"

DISCLAIMER:

THE DESIGN SHOWN AND DESCRIBED HEREIN INCLUDING ALL TECHNICAL DRAWINGS, GRAPHIC REPRESENTATIONS, AND MODELS THEREOF ARE PROPRIETARY AND CANNOT BE COPIED, REPRODUCED, OR OTHERWISE USED IN WHOLE OR IN PART WITHOUT THE WRITTEN CONSENT OF OLSON KUNDIG.

ENVIRONMENTAL PLANNING GROUP (EPG) PROVIDED QUANTITIES ARE CALCULATED BASED ON THE 2012/2013 PROPOSED CONSTRUCTION AREAS RESPONSIBLE FOR REVIEWING THE DESIGN AND PROVIDING THEIR OWN CALCULATIONS AND AREAS FOR THE PURPOSES OF COST ESTIMATING.

THE CLIENT, AND/OR THE CLIENT'S CONTRACTOR, IS RESPONSIBLE FOR OBTAINING OR PROVIDING THE NECESSARY CONSTRUCTION PERMIT FOR CITY CODE COMPLIANCE.

CONSTRUCTION DOCUMENTS 95%  
IFC SET 2 OF 3

May 17, 2024

PLANTING PLAN

L502