



PLANT SCHEDULE		
QTY	COMMON / BOTANICAL NAME	SIZE
TREES		
28	AMUR MAPLE ACER GINNALA	2" CAL
5	JAPANESE MAPLE ACER PALMATUM TREES TO BE CUSTOM PICKED BY LANDSCAPE ARCHITECT AT SOURCE	2" CAL
62	QUAKING ASPEN POPULUS TREMULOIDES	2" CAL
181	QUAKING ASPEN POPULUS TREMULOIDES	2" CAL
12	QUAKING ASPEN POPULUS TREMULOIDES	3" CAL
19	TATARIAN MAPLE ACER TATARICUM	2" CAL
SHRUBS		
108	BEAUTY BUSH KOLKWTIZIA AMABILIS	5" GAL
461	EMERALD CARPET MANZANITA ARCTOSTAPHYLOS X EMERALD CARPET	5" GAL
486	LITTLE BLUESTEM SCHIZACHYRIUM SCOPARIUM	5" GAL
338	MOUNTAIN SNOWBERRY SYMPHORICARPOS OREOPHILUS	5" GAL
47	OREGON GRAPE BERBERIS AQUIFOLIUM	5" GAL
162	PROSTRATE PLUM YEW CEPHALOTAXUS HARRINGTONIA 'PROSTRATA'	5" GAL
167	WRIGHT'S STONECROP SEDUM WRIGHTII	5" GAL
GROUND COVERS		
60,780 SF	BIONATIVE SOD NOTE: ROCKY MOUNTAIN WILDFLOWER MIX OVERSEEDED INTO BIO NATIVE SOD AFTER SOD INSTALLATION	SOD
5,509 SF	KENTUCKY BLUEGRASS POA PRATENSIS	SOD

159 South Jackson St. Suite 400
Seattle, Washington 98101 USA
+1 206 834 1870 olsonkundig.com

Olson Kundig

SOMMET BLANC RESIDENCE 1
ADDRESS
PARK CITY, UT

White Summit Development, LLC
PO Box 980022
Park City, Utah 84098

Acoustic Consultant
BRC Acoustics
1332 1st Ave, Suite 620
Seattle, WA 98101

Pool Consultant
Cloward H2O
2050 N University Ave, Suite 290
Provo, UT 84604

6848 South High Tech Drive, Suite 100
Midvale, Utah 84047

Specifications Writer
Friday Group
88 Mainelli Road
Medfordbury, VT

Code Consultant
Holmes
600 1st Avenue, Suite 200A
Seattle, WA 98104

Fire Protection Engineer
Jensen Hughes
One Research Drive, Suite 305C
Westborough, MA 01581

Vertical Transportation Consultant
Lerch Bates
19515 North Creek Parkway, Suite 304
Bothell, WA 98011

Structural Engineer
Magnusson Hemmick Associates
1301 5th Ave, Suite 3200
Seattle, WA 98101

Lighting Designer
D
1319 SE MLK Blvd, Suite 210
Portland, Oregon 97219

Building Envelope Consultant
RDH
2101 N 34th St
Seattle, WA 98103

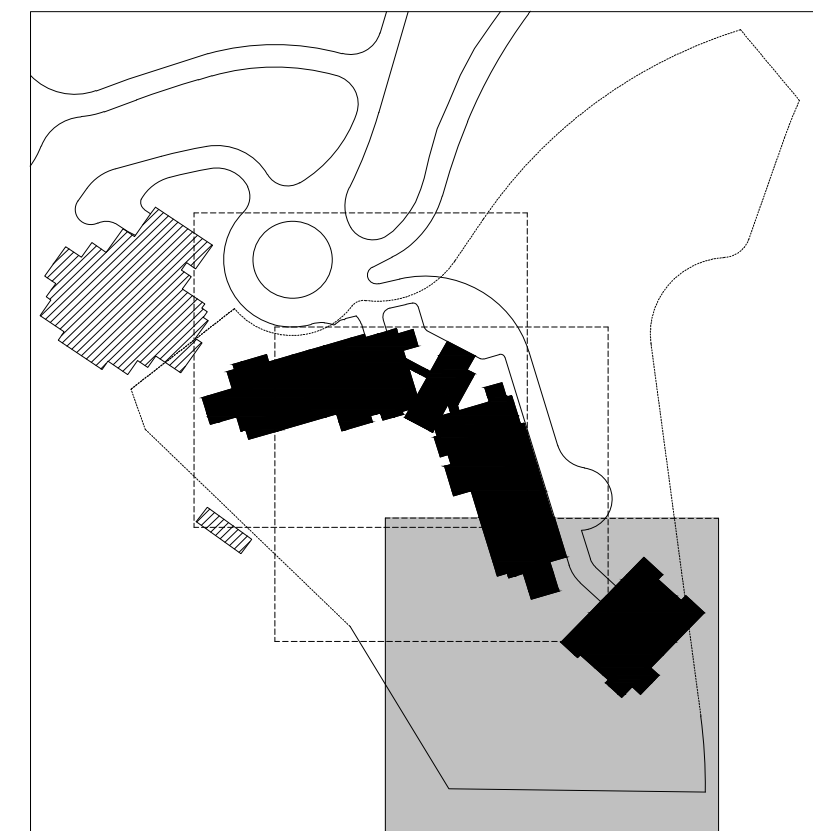
Accessibility Consultant
Studio Pacifica
2144 Westlake Ave N, Suite F
Seattle, WA 98109

MEP Engineer
WSP USA
1001 Fourth Ave., Suite 3100
Seattle, WA 98154

Grant Hardy
Grant Hardy

Checker
20552
May 17, 2024

IFC 2.0/17/2024



CONSTRUCTION
DOCUMENTS 95%
IFC SET 2 OF 3
May 17, 2024

PLANTING PLAN

L503