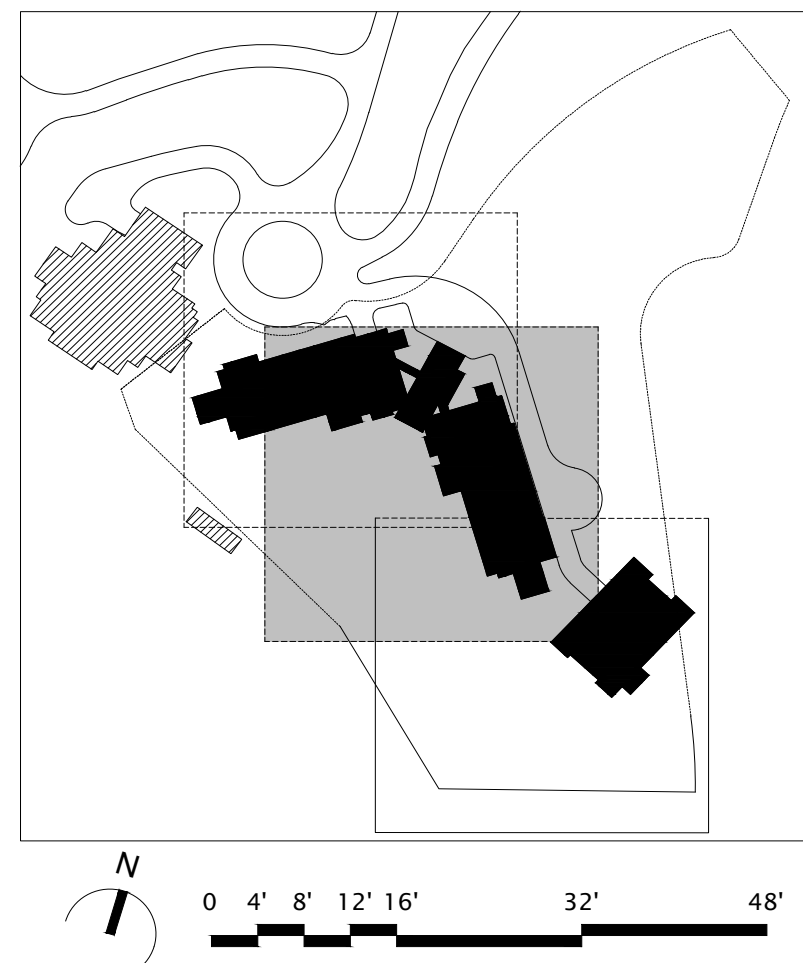


SYMBOL	MANUFACTURER/MODEL/DESCRIPTION
	RAIN BIRD PEBB-PRS-D 1" PLASTIC INDUSTRIAL VALVES. LOW FLOW OPERATING CAPABILITY. GLOBE CONFIGURATION. WITH PRESSURE REGULATING MODULE AND SCRUBBER TECHNOLOGY FOR RELIABLE PERFORMANCE IN DIRTY WATER IRRIGATION APPLICATIONS.
	RAIN BIRD 44-LRC 1" BRASS QUICK-COUPLING VALVE. WITH CORROSION-RESISTANT STAINLESS STEEL SPRING. LOCKING THERMOPLASTIC RUBBER COVER. AND 3-PIECE BODY.
	RAIN BIRD EFB-CP 1" 1-1/4", 1-1/2", 2" BRASS MASTER VALVE. THAT IS CONTAMINATION PROOF WISF-F-FLUSHING FILTER SCREEN. GLOBE CONFIGURATION. RECLAIMED WATER COMPATIBLE. AND PURPLE HANDLE COVER DESIGNATES NON-POTABLE WATER USE.
	ZURN WILKINS 375XLB 1" REDUCED PRESSURE PRINCIPLE ASSEMBLY. SIZE 2" WITH LOCKING STEEL CAGE AND 4" CONCRETE HOUSE KEEPING PAD. COORDINATE EXACT PLACEMENT WITH OWNER.
	HYDRO POINT WTLFOWHD+200 2" IRON. HIGH-DEFINITION FLOW SENSOR AND SUB-METER FOR 2" MAINLINES. INSTALL ON DOWNSTREAM SIDE OF BACKFLOW PREVENTER ABOVE GRADE PER DETAIL.
	POINT OF CONNECTION 3" WATER METER FOR IRRIGATION SEE CIVIL PLANS
	IRRIGATION LATERAL LINE: PVC SCHEDULE 40
	IRRIGATION MAINLINE: PVC SCHEDULE 40
	Valve Callout Valve Number Valve Flow Valve Size



DISCLAIMER:
THE DESIGN SHOWN AND DESCRIBED HEREIN INCLUDING ALL TECHNICAL DRAWINGS, GRAPHIC REPRESENTATIONS, AND MODELS HEREBY ARE PROPRIETARY AND CANNOT BE COPIED, REPRODUCED, Duplicated, OR COMMERCIALY EXPLOITED IN WHOLE OR IN PART WITHOUT THE SOLE AND EXPRESS WRITTEN PERMISSION FROM ENVIRONMENTAL PLANNING GROUP (EPG).
ENVIRONMENTAL PLANNING GROUP (EPG) PROVIDED QUANTITIES ARE CALCULATED BASED ON THE DESIGN PROVIDED. CONTRACTORS ARE RESPONSIBLE FOR REVIEWING THE DESIGN AND PROVIDING THEIR OWN CALCULATIONS AND AREAS FOR THE PURPOSES OF COST ESTIMATING.
THE CLIENT, AND/OR THE CLIENT'S CONTRACTOR, IS RESPONSIBLE FOR OBTAINING OR PROVIDING THE NECESSARY CONSTRUCTION PERMIT FOR CITY CODE COMPLIANCE.

199 South Jackson St. Suite 400
Seattle, Washington 98104 USA
+1 206 854 5870 olsonkundig.com

Olson Kundig

SOMMET BLANC RESIDENCE 1
ADDRESS
PARK CITY, UT

White Summit Development, LLC
PO Box 980022
Park City, Utah 84098

Acoustic Consultant
BRC Acoustics
1332 1st Ave. Suite 620
Seattle, WA 98101

Pool Consultant
Cloward H2O
2696 N University Ave. Suite 290
Provo, UT 84604

6848 South High Tech Drive, Suite 100
Midvale, Utah 84047

Specifications Writer
Friday Group
88 Mainelli Road
Middletown, VT

Code Consultant
Holmes
600 1st Avenue, Suite 200A
Seattle, WA 98104

Fire Protection Engineer
Jensen Hughes
One Research Drive, Suite 305C
Westborough, MA 01581

Vertical Transportation Consultant
Lerch Bates
19515 North Creek Parkway, Suite 304
Bothell, WA 98011

Structural Engineer
Magnusson Homeomic Associates
1301 5th Ave. Suite 3200
Seattle, WA 98101

Lighting Designer
RDH
1319 SE MLK Blvd. Suite 210
Portland, Oregon 97219

Building Envelope Consultant
RDH
2101 N 34th St
Seattle, WA 98103

Accessibility Consultant
Studio Pacifica
2144 Westlake Ave N, Suite F
Seattle, WA 98109

MEP Engineer
WSP USA
1001 Fourth Ave., Suite 3100
Seattle, WA 98154

Grant Hardy
Grant Hardy

Checker
20052
May 17, 2024

IFC 2.9172024

CONSTRUCTION
DOCUMENTS 95%
IFC SET 2 OF 3
May 17, 2024

IRRIGATION PLAN

L702