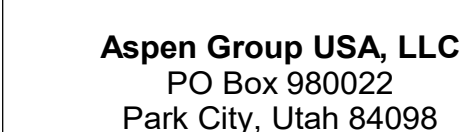


159 South Jackson St, Suite 600
Seattle, Washington 98104 USA
t 206 624 5670 obsconkunding.com

Olson Kundig

project: **SOMMET BLANC**
9300 Marsac Ave (B2 East Parcel)
Park City, Utah 84060



Pool Consultant
Cloward H2O
2696 N University Ave, Suite 290
Provo, UT 84604

Landscape Architect
EPG Design
6949 South High Tech Drive, Suite 100
Midvale, Utah 84047

Specifications Writer
Friday Group
88 Mainelli Road
Middlebury, VT

Code Consultant
Holmes
600 1st Avenue, Suite 200
Seattle, WA 98104

Fire Protection Engineer
Jensen Hughes
One Research Drive, Suite 305C
Westborough, MA 01581

Vertical Transportation Consultant
Lerch Bates
19515 North Creek Parkway, Suite 304
Bothell, WA 98011

Structural Engineer
Magnusson Klemencic Associates
1301 5th Ave., Suite 3200
Seattle, WA 98101

Lighting Designer
O.
1319 SE MLK Blvd, Suite 210
Portland, Oregon 97219

Building Envelope Consultant
RDH
2101 N 34th St
Seattle, WA 98103

Accessibility Consultant
Studio Pacifica
2144 Westlake Ave N, Suite F
Seattle, WA 98109

MEP Engineer
WSP USA
1001 Fourth Ave., Suite 3100
Seattle, WA 98154

principal architect _____
project manager _____
drawn by _____
checked by Checker
job no. _____
date 5/31/2024

revisions:

no.	date	by
-----	------	----

IFC Set 3 of 3
5/31/2024

TOWER A - ROOF
MECHANICAL DUCT
PLAN

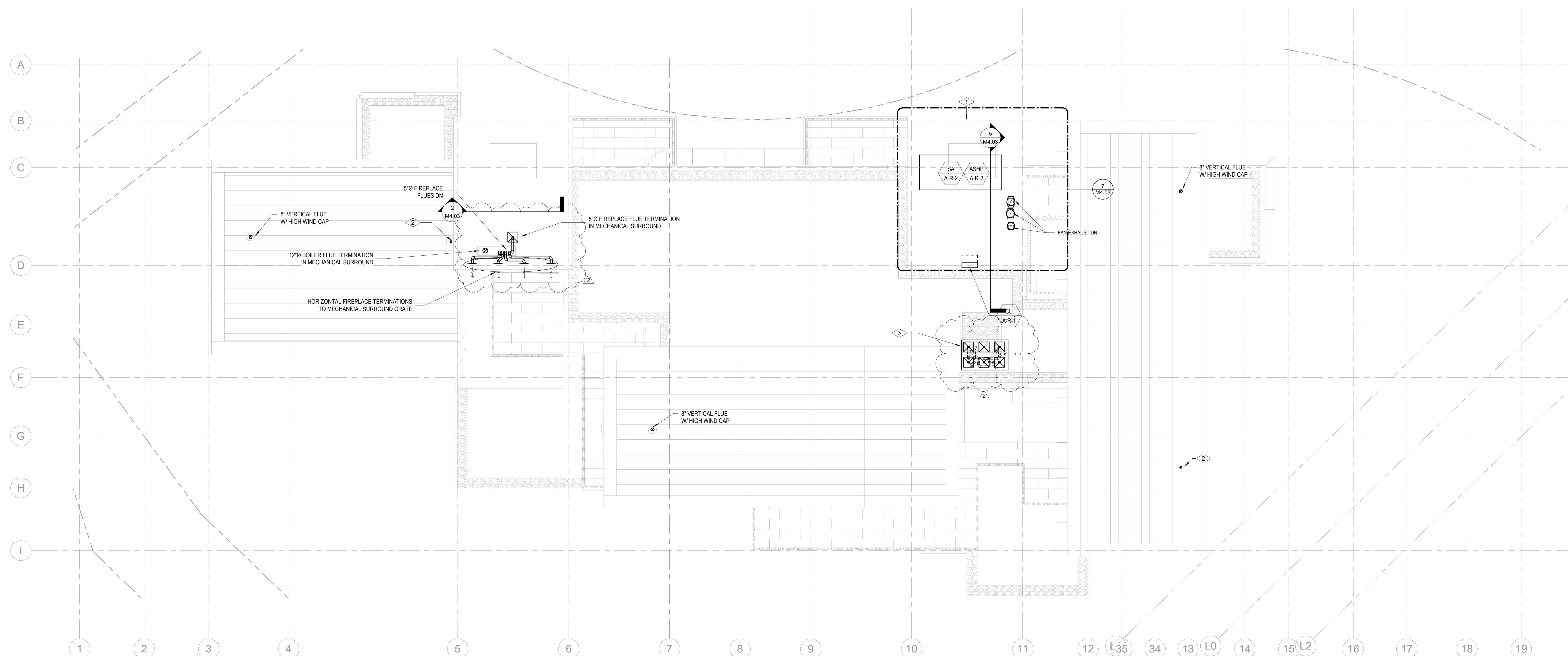
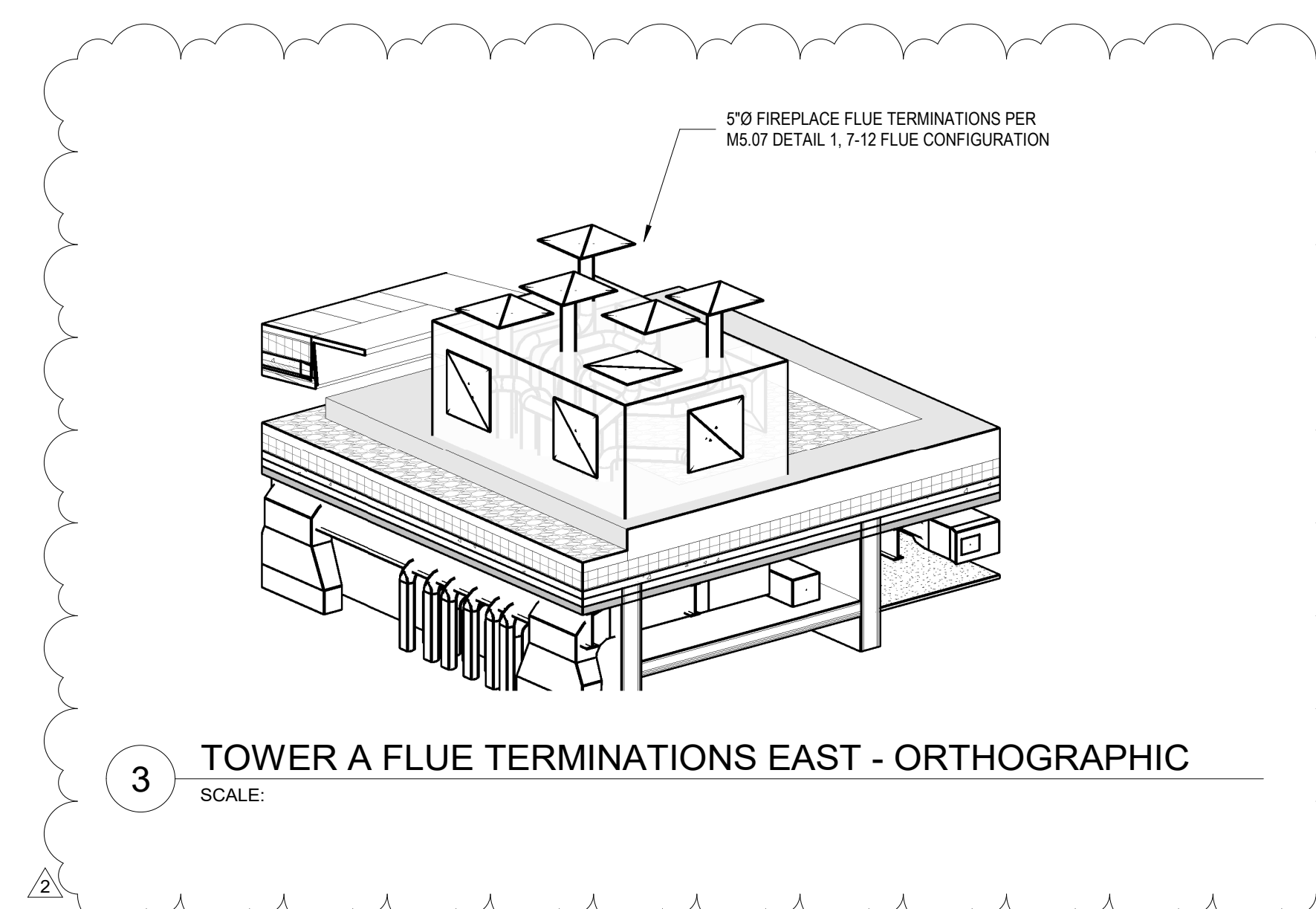
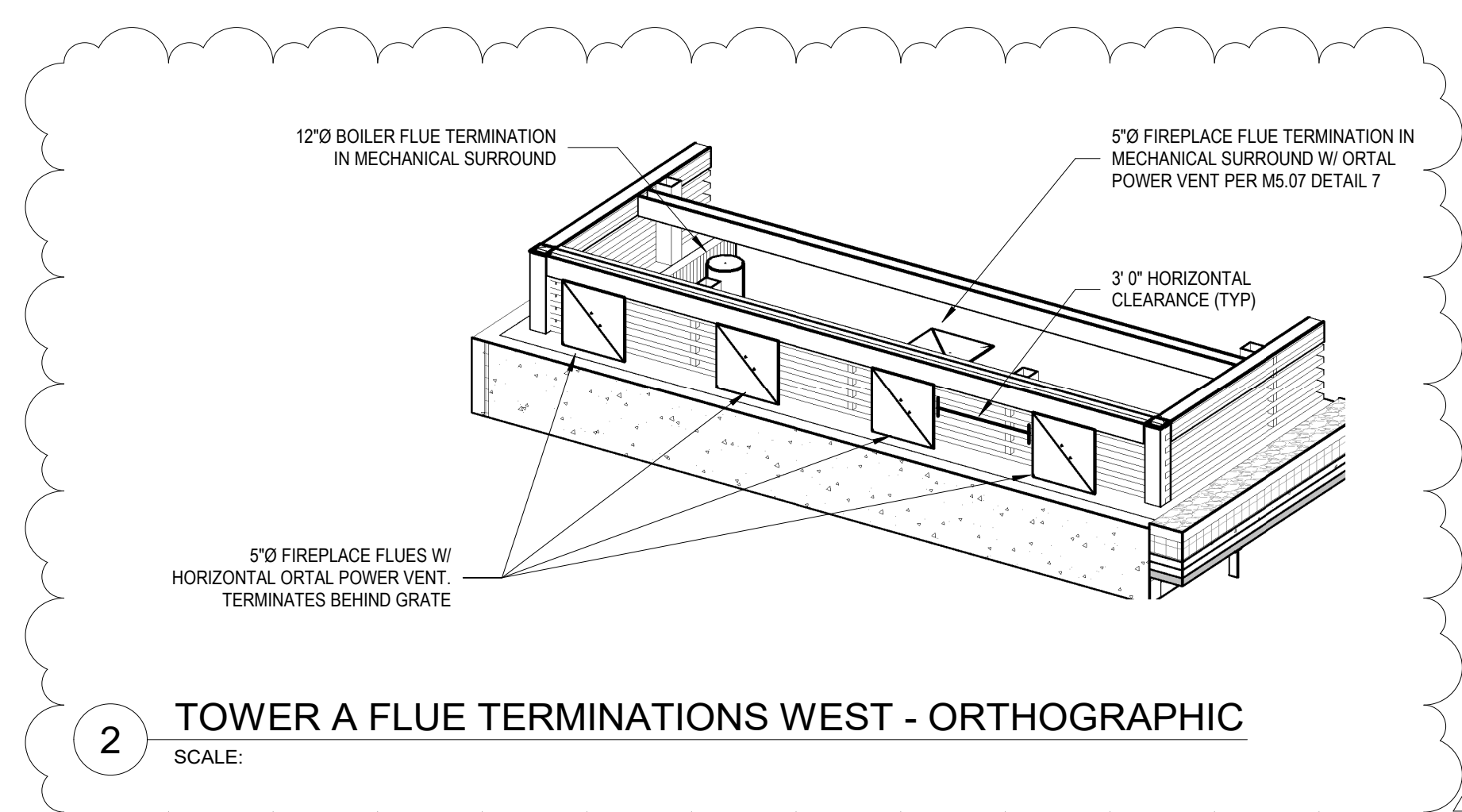
M2.2A.R

SHEET NOTES:

- A. REFER TO M2.4 SERIES FOR ENLARGED PLANS.
B. FIREPLACE FLUE ROUTING SHOWN FOR REFERENCE. REFER TO ENLARGED UNIT PLANS FOR ROUTING AND SIZING DETAIL.
C. MECHANICAL EQUIPMENT SHOWN FOR REFERENCE. REFER TO ENLARGED UNIT PLANS FOR DETAIL.

NUMBERED NOTES:

- 1 36-INCH TALL LOUVER FOR ASHP AIR INTAKE PROVIDED
AROUND TOP OF ENTIRE MECHANICAL WELL. SEE
ARCHITECTURAL DRAWINGS FOR DETAIL.
- 2 FIREPLACE FLUE TERMINATION TO BE CAPPED WITH
ORTAL VERTICAL POWER VENT PER M5.07 DETAIL 7
- 3 5"Ø FIREPLACE FLUE TERMINATIONS PER M5.07 DETAIL
1, 7-12 FLUE CONFIGURATION



1 TOWER A - ROOF MECHANICAL DUCT PLAN
SCALE: 1/8" = 1'-0"

