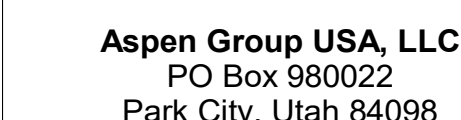


159 South Jackson St, Suite 600  
Seattle, Washington 98104 USA  
+1 206 624 5670 [olsonkunding.com](mailto:olsonkunding.com)

Olson Kundig

Project: **SOMMET BLANC**  
3300 Marsac Ave (B2 East Parcel)  
Park City, Utah 84060



**Pool Consultant**  
**Cloward H2O**  
2696 N University Ave, Suite 290  
Provo, UT 84604

**Landscape Architect**  
**EPG Design**  
6949 South High Tech Drive, Suite 100  
Midvale, Utah 84047

**Specifications Writer**  
**Friday Group**  
88 Mainelli Road  
Middletown, CT

**Code Consultant**  
**Holmes**  
600 1st Avenue, Suite 200  
Seattle, WA 98104

Fire Protection Engineer  
**Jensen Hughes**  
One Research Drive, Suite 305C  
Westborough, MA 01581

Vertical Transportation Consultant  
**Lerch Bates**  
19515 North Creek Parkway, Suite 300  
Bothell, WA 98011

Structural Engineer  
**Magnusson Klemencic Associates**  
1301 5th Ave., Suite 3200  
Seattle, WA 98101

Lighting Designer  
O-  
1319 SE MLK Blvd, Suite 210  
Portland, Oregon 97219

**Building Envelope Consultant**  
**RDH**  
2101 N 34th St  
Seattle, WA 98103

**Accessibility Consultant**  
**Studio Pacifica**  
2144 Westlake Ave N, Suite F  
Seattle, WA 98109

**MEP Engineer**  
**WSP USA**  
1001 Fourth Ave., Suite 3100  
Seattle, WA 98154

principal architect \_\_\_\_\_  
project manager \_\_\_\_\_  
drawn by \_\_\_\_\_  
checked by Checker  
job no. \_\_\_\_\_  
date 05/17/2024

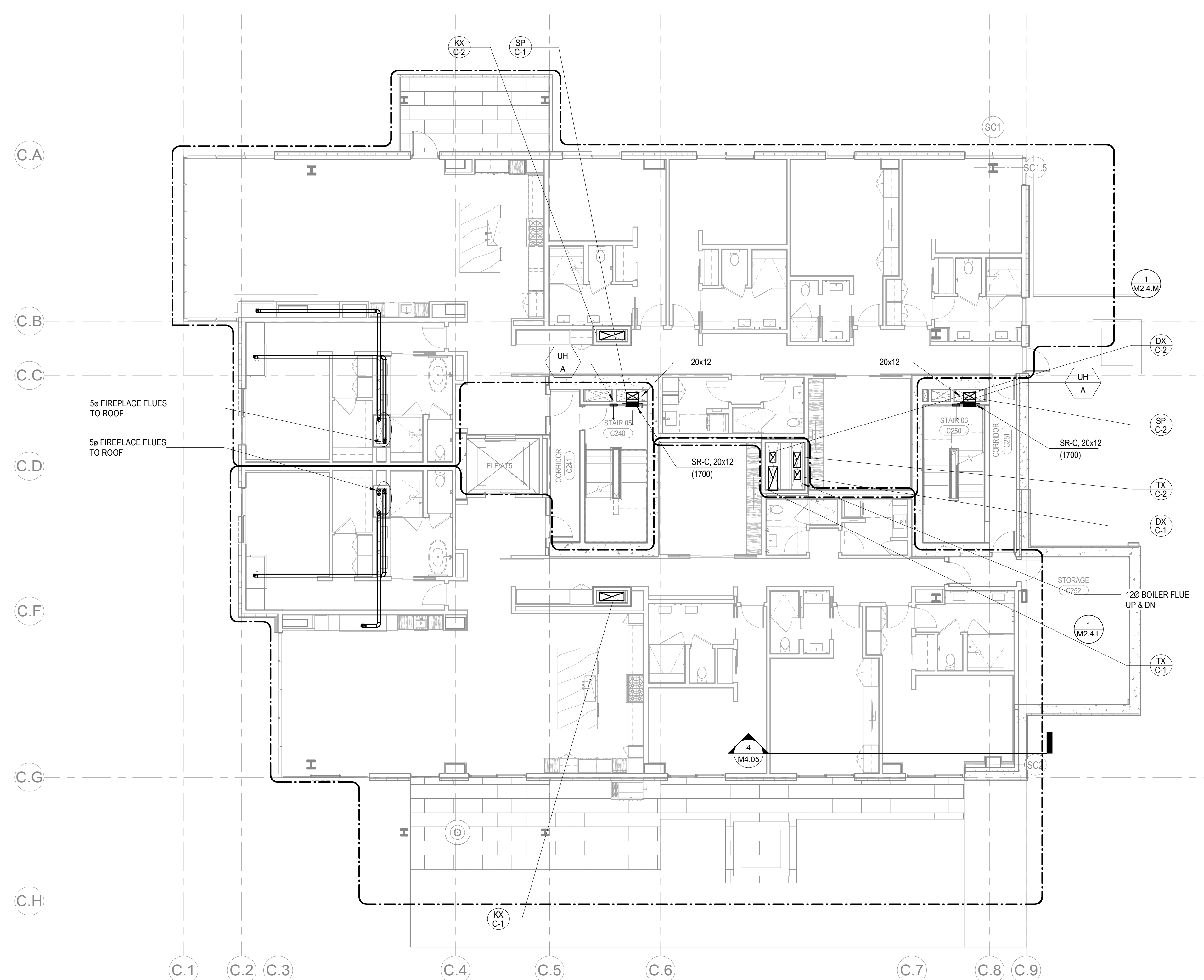
revisions:

no.	date	t
-----	------	---

IFC Set 2 of 3  
05/17/2024

TOWER C - LVL 2  
MECHANICAL DUCT  
PLAN

M2.2C.12



1 TOWER C - LEVEL 2 MECHANICAL DUCT PLAN  
SCALE: 1/8" = 1'-0"

