

A. CONFIRM EXACT LOCATION OF ALL WALL DEVICES WITH ARCHITECTURAL ELEVATIONS.
B. CONFIRM ALL CEILING AND WALL ACCESS DOORS WITH ARCHITECTURAL RCP'S AND WALL ELEVATIONS.
C. REFER TO M3-2A-01 THROUGH M3-2C-R FOR RADIANT FLOOR H/W/S R/PING ROUTING AND SIZING.
D. PROVIDE 1-INCH ACOUSTIC LINING FOR ENTIRETY OF MAIN DUCT RUN OFF FAN COIL.
E. ALL RESIDENTIAL TOILET EXHAUST, DRYER EXHAUST, AND KITCHEN RANGE HOOD EXHAUST TO BE PART OF A SUB-DUCT EXHAUST SYSTEM.
F. ROUTE 3/4" CONDENSATE DRAINS FROM FCUS TO NEAREST SINK TAILPIECE.

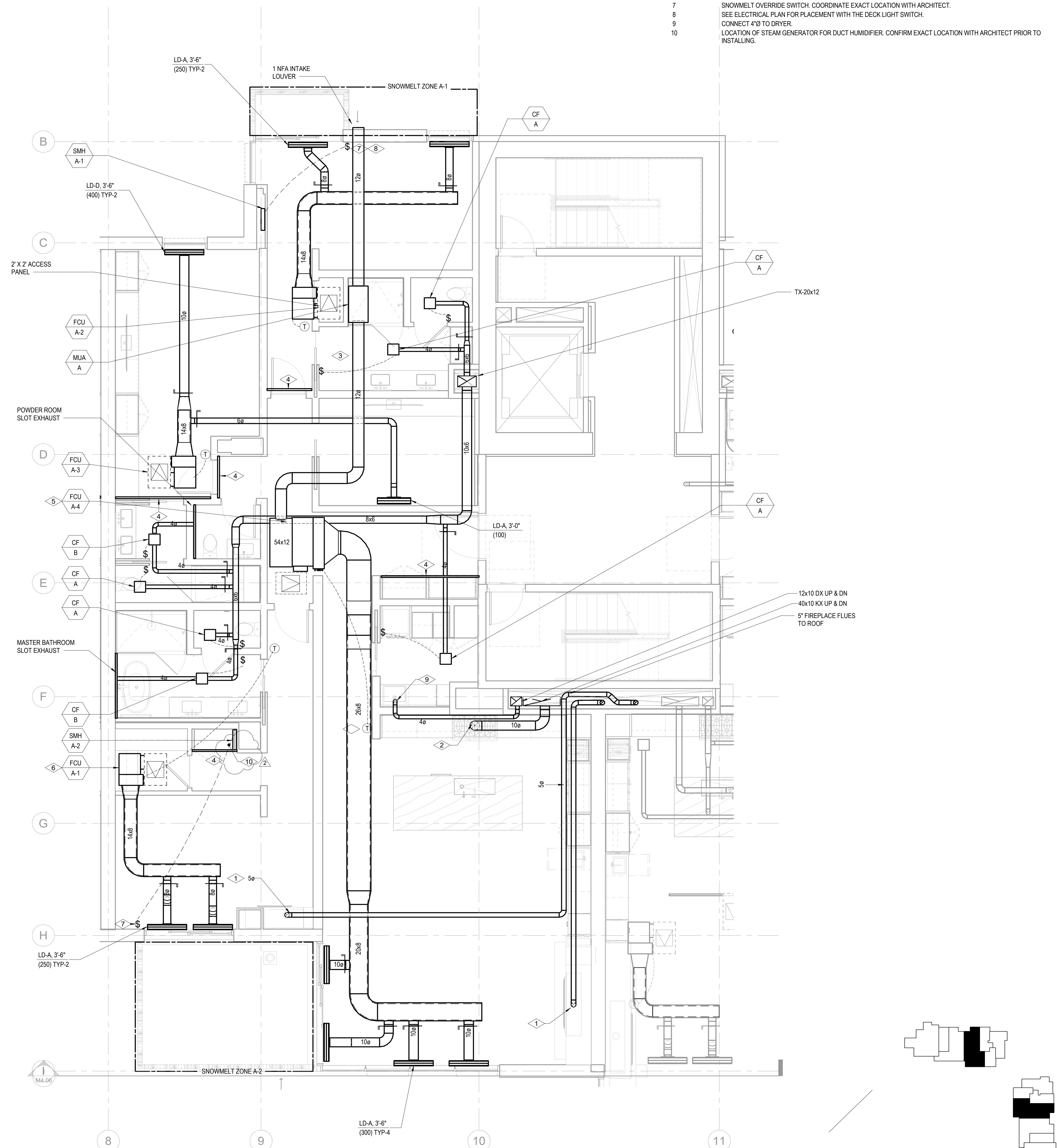
1 5"Ø CONCENTRIC FLUE TO GAS FIREPLACE. PROVIDE ORTAL IN-LINE 180 POWERVENT (120V/15A).
2 RANGE HOOD EXHAUST FAN TO BE INTEGRAL WITH RANGE SPECIFIED BY THE ARCHITECT. INTERLOCK CONTROL WITH
3 MUA-A
4 ELECTRICAL RADIANT FLOOR TO BE PROVIDED IN MASTER BATHROOM. SEE ELECTRICAL DRAWINGS.
5 2" RETURN AIR SLOT
6 OWNER OPTION: PROVIDE 208(16A)V CONNECTION FOR APRILAIRE 800 HUMIDIFIER DOWNSTREAM OF FAN COIL UNIT.
7 REFER TO ELECTRICAL DRAWINGS FOR DETAIL. REFER TO PLUMBING DRAWINGS FOR 1/2" CW CONNECTION. ROUTE
8 3/4" CD TO NEAREST SINK TAILPIPE. REFER TO DETAILS MS.0418 & MS.0412 FOR INSTALLATION CONNECTION.

63	125	250	500	1000	2000	4000	8000
0	4	6	8	7	9	8	0

6 CONFIRM WITH OWNER AND ARCHITECT PRIOR TO PROVIDING HUMIDIFIER.
OWNER OPTION: PROVIDE 120/16A/1 CONNECTION FOR APRILAIRE 800 HUMIDIFIER DOWNSTREAM OF FAN COIL UNIT. REFER TO ELECTRICAL DRAWINGS FOR DETAIL. REFER TO PLUMBING DRAWINGS FOR 1/2" CW CONNECTION. ROUTE 3/4" CD TO NEAREST SINK TAILPIECE. REFER TO DETAILS M5.04/8 & M5.04/12 FOR INSTALLATION CONNECTION.

63	125	250	500	1000	2000	4000	8000
0	4	6	8	7	9	8	0

CONFIRM WITH OWNER AND ARCHITECT PRIOR TO PROVIDING HUMIDIFIER.
7 SNOWMELT OVERRIDE SWITCH. COORDINATE EXACT LOCATION WITH ARCHITECT.
8 SEE ELECTRICAL PLAN FOR PLACEMENT WITH THE DECK LIGHT SWITCH.
9 CONNECT 4"Ø TO DRYER.
10 LOCATION OF STEAM GENERATOR FOR DUCT HUMIDIFIER. CONFIRM EXACT LOCATION WITH ARCHITECT PRIOR TO
INSTALLING.



1 TOWER A/B - MECHANICAL PLAN - UNIT A
SCALE: 1/4" = 1'-0"

SCALE: 1/4" = 1'-0"

