

Olson Kundig

project: **SOMMET BLANC**  
3300 Marsac Ave (B2 East Parcel)



**MEP Engineer**  
**WSP USA**  
1001 Fourth Ave., Suite 3100  
Seattle, WA 98154

revisions:

no.	date	to	for
1	1950	1951	1952
2	1953	1954	1955
3	1956	1957	1958
4	1959	1960	1961
5	1962	1963	1964
6	1965	1966	1967
7	1968	1969	1970
8	1971	1972	1973
9	1974	1975	1976
10	1977	1978	1979
11	1980	1981	1982
12	1983	1984	1985
13	1986	1987	1988
14	1989	1990	1991
15	1992	1993	1994
16	1995	1996	1997
17	1998	1999	2000
18	2001	2002	2003
19	2004	2005	2006
20	2007	2008	2009
21	2010	2011	2012
22	2013	2014	2015
23	2016	2017	2018
24	2019	2020	2021
25	2022	2023	2024
26	2025	2026	2027
27	2028	2029	2030
28	2031	2032	2033
29	2034	2035	2036
30	2037	2038	2039
31	2040	2041	2042
32	2043	2044	2045
33	2046	2047	2048
34	2049	2050	2051
35	2052	2053	2054
36	2055	2056	2057
37	2058	2059	2060
38	2061	2062	2063
39	2064	2065	2066
40	2067	2068	2069
41	2070	2071	2072
42	2073	2074	2075
43	2076	2077	2078
44	2079	2080	2081
45	2082	2083	2084
46	2085	2086	2087
47	2088	2089	2090
48	2091	2092	2093
49	2094	2095	2096
50	2097	2098	2099
51	2100	2101	2102
52	2103	2104	2105
53	2106	2107	2108
54	2109	2110	2111
55	2112	2113	2114
56	2115	2116	2117
57	2118	2119	2120
58	2121	2122	2123
59	2124	2125	2126
60	2127	2128	2129
61	2130	2131	2132
62	2133	2134	2135
63	2136	2137	2138
64	2139	2140	2141
65	2142	2143	2144
66	2145	2146	2147
67	2148	2149	2150
68	2151	2152	2153
69	2154	2155	2156
70	2157	2158	2159
71	2160	2161	2162
72	2163	2164	2165
73	2166	2167	2168
74	2169	2170	2171
75	2172	2173	2174
76	2175	2176	2177
77	2178	2179	2180
78	2181	2182	2183
79	2184	2185	2186
80	2187	2188	2189
81	2190	2191	2192
82	2193	2194	2195
83	2196	2197	2198
84	2199	2200	2201
85	2202	2203	2204
86	2205	2206	2207
87	2208	2209	2210
88	2211	2212	2213
89	2214	2215	2216
90	2217	2218	2219

IFC Set 3 of 3  
05/31/2024

ENLARGED  
MECHANICAL PLAN -  
UNIT L

M2.4.L

- A. CONFIRM EXACT LOCATION OF ALL WALL DEVICES WITH ARCHITECTURAL ELEVATIONS.
- B. CONFIRM ALL CEILING AND WALL ACCESS DOORS WITH ARCHITECTURAL RCP'S AND WALL ELEVATIONS.
- C. REFER TO M3-2A-01 THROUGH M3-2C-R FOR RADIANT FLOOR HWS/R PIPING ROUTING AND SIZING.
- D. PROVIDE 1-INCH ACOUSTIC LINING FOR ENTIRETY OF MAIN DUCT RUN OFF FAN COIL.
- E. ROUTE 3/4" CONDENSATE DRAINS FROM FCUS TO NEAREST TAILPIECE.

- 1 RANGE HOOD EXHAUST FAN TO BE NEGRAAL WITH RANGE SPECIFIED BY THE ARCHITECT.  
INTERLOCK CONNECTION WITH MU-6A.
- 2 ELECTRICAL RADIANT FLOOR TO BE PROVIDED IN MASTER BATHROOM. SEE ELECTRICAL  
DRAWINGS.
- 3 2" RETURN AIR SLOT
- 4 1" RETURN AIR FLUTE
- 5 50% CONCENTRIC FLUTE TO GAS FIREPLACE. PROVIDE OUTLET IN LINE 180 POWERVENT (120V/15A).
- 6 OWNER OPTION: PROVIDE 206/16A/1" CONNECTION FOR APRILARE 800 HUMIDIFIER DOWNSTREAM  
OF FAN COIL UNIT. PROVIDE ELECTRICAL DRAWINGS FOR DETAIL. REFER TO PLUMBING  
DRAWING FOR DETAIL OF CONNECTION. ROUTE 3/4" CO TO NEAREST SINK TAILPIPE. REFER TO  
VZL MS 048 & MS 041/2 FOR INSTALLATION CONNECTION.

REMOVE SOUND LINING FROM FCU AND PROVIDE PRICE RSP 3'-0" SOUND ATTENUATOR WITH A MINIMUM INSERTION LOSS OF:

63	125	250	500	1000	2000	4000	8000
0	4	6	8	7	9	8	0

CONFIRM WITH OWNER AND ARCHITECT PRIOR TO PROVIDING HUMIDIFIER.  
7. OWNER OPTION: PROVIDE 120/16A/1 CONNECTION FOR APRILAIRE 800 HUMIDIFIER DOWNSTREAM OF FAN COIL UNIT. REFER TO ELECTRICAL DRAWINGS FOR DETAIL. REFER TO PLUMBING DRAWINGS FOR 1/2" CW CONNECTION. ROUTE 3/4" CD TO NEAREST SINK TAILPIECE. REFER TO DETAILS M5.04/8 & M5.04/12 FOR INSTALLATION CONNECTION.

REMOVE SOUND LINING FROM FCU AND PROVIDE PRICE RSP 3'-0" SOUND ATTENUATOR WITH A MINIMUM INSERTION LOSS OF:

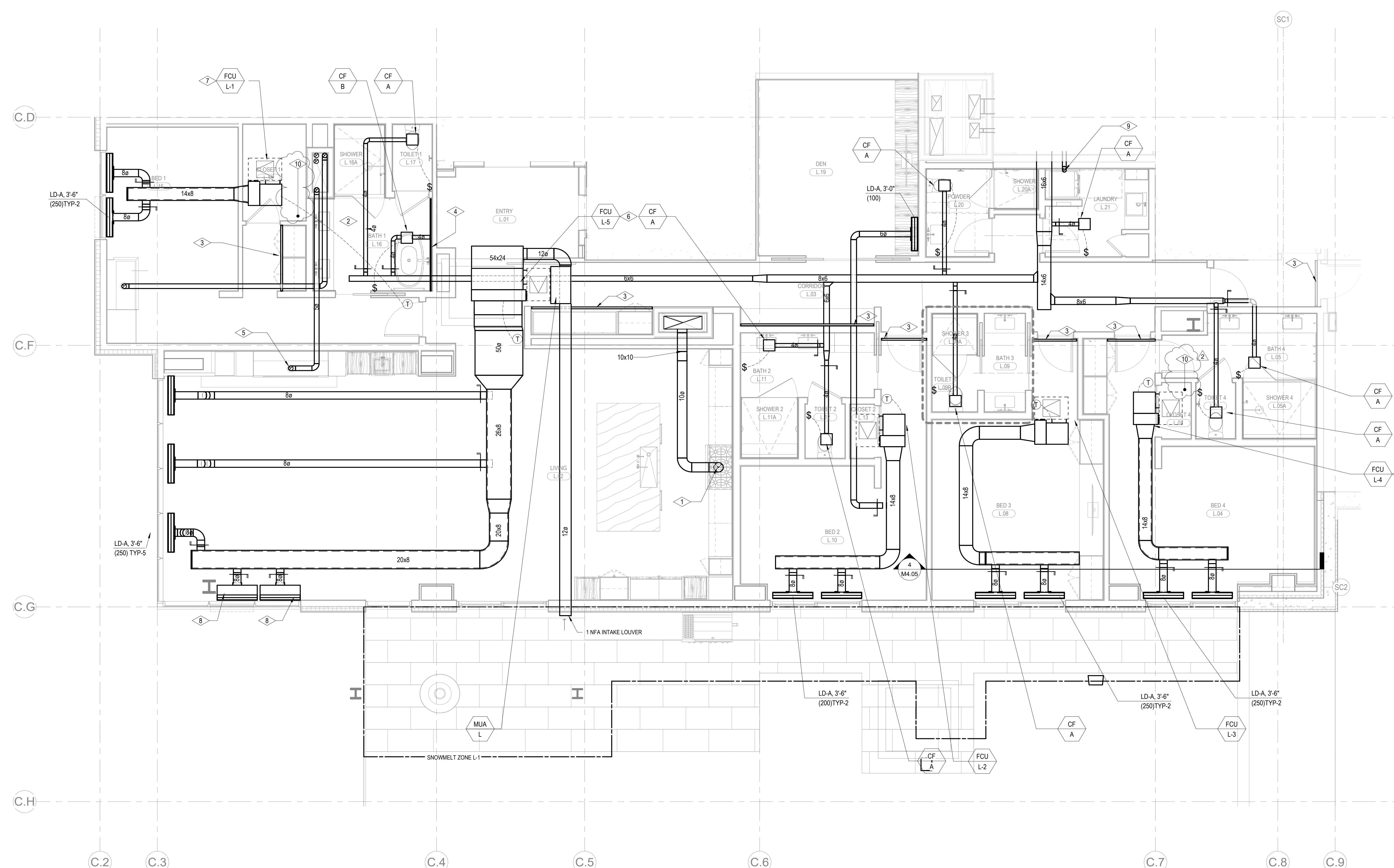
63	125	250	500	1000	2000	4000	8000
0	4	6	8	7	9	8	0

CONFIRM WITH OWNER AND ARCHITECT PRIOR TO PROVIDING HUMIDIFIER.

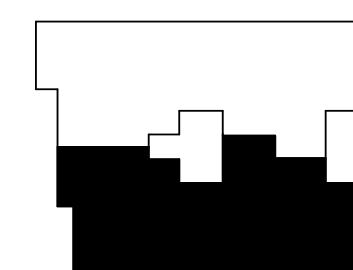
8 FLAT DIFFUSERS TO  
FIT BENEATH LOWERED SLAB

9 CONNECT 4"Ø TO DRYER.

10 LOCATION OF STEAM GENERATOR FOR DUCT HUMIDIFIER, CONFIRM EXACT LOCATION WITH  
ARCHITECT



1 BLDG C - MECHANICAL UNIT PLAN - L  
SCALE: 1/4" = 1'-0"



0 1' 2' 3' 4' 8' 1