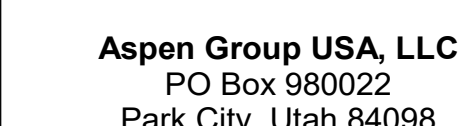


159 South Jackson St, Suite 600  
Seattle, Washington 98104 USA  
+1 206 624 5670 [olsorkundig.com](mailto:olsorkundig.com)

Olson Kundig

Project: **Sommet Blanc - C**  
**DEER VALLEY, UTAH**



**Pool Consultant**  
**Cloward H20**  
2896 N University Ave., Suite 290  
Provo, UT 84604

**Landscape Architect**  
**EPG Design**  
6949 South High Tech Drive, Suite 100  
Midvale, Utah 84047

Specifications Writer  
**Friday Group**  
88 Mainelli Road  
Middletown, CT

**Code Consultant**  
**Holmes**  
600 1st Avenue, Suite 200A  
Seattle, WA 98104

Fire Protection Engineer  
**Jensen Hughes**  
One Research Drive, Suite 305C  
Westborough, MA 01581

**Vertical Transportation Consultant**  
**Lerch Bates**  
19515 North Creek Parkway, Suite 304  
Redtail, WA 98044

Structural Engineer  
Magnusson Klemencic Associates  
1301 5th Ave, Suite 3200  
Seattle, WA 98101

**Lighting Designer**  
O-  
1319 SE MLK Blvd, Suite 210  
Portland, Oregon 97202

**Building Envelope Consultant**  
**RDH**  
2101 N 34th St  
Seattle, WA 98103

**Accessibility Consultant**  
**Studio Pacifica**  
2144 Westlake Ave N, Suite F  
Seattle, WA 98109

**MEP Engineer**  
**WSP USA**  
1001 Fourth Ave., Suite 3100  
Seattle, WA 98154

principal architect \_\_\_\_\_  
project manager \_\_\_\_\_  
drawn by \_\_\_\_\_  
checked by GM \_\_\_\_\_  
job no. 2021-0595  
date 5/31/2024

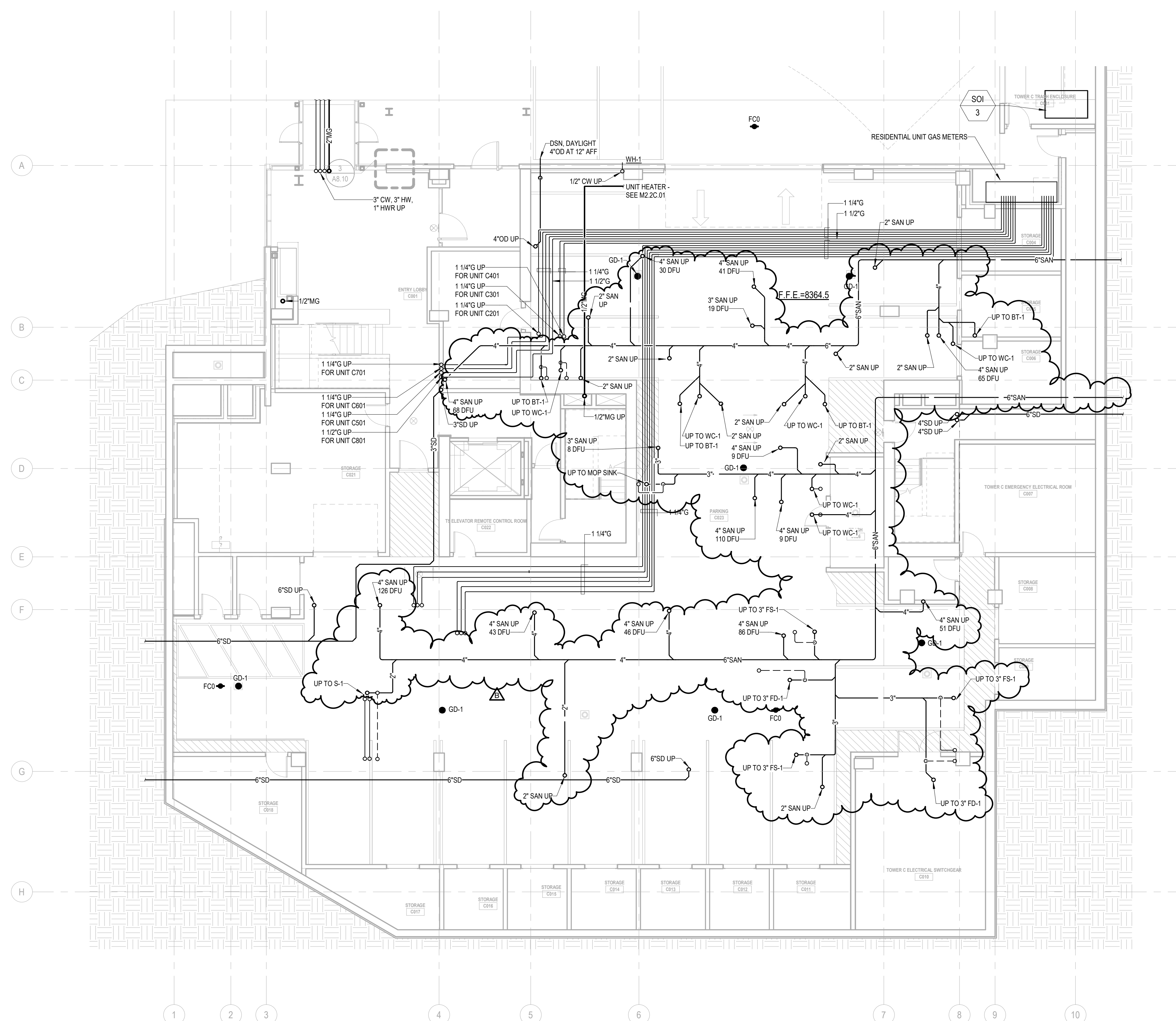
[illegible]

no.	date	by
-----	------	----

IFC Set 3 of 3  
5/31/2024

PLAN - TOWER C - LVL  
P1

P2.2C.01



**1 PLAN - TOWER C - LVL P1**  
SCALE: 1/8" = 1'-0"